

Well Name:

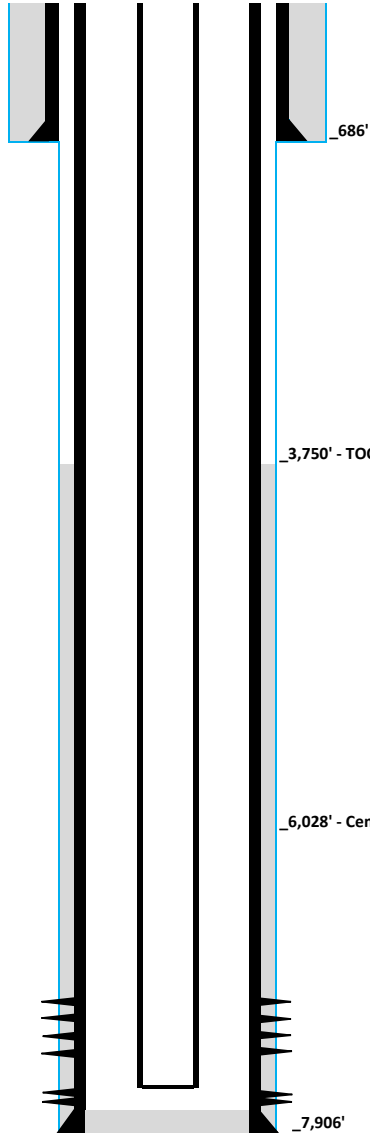
McCoy 24-33

API No.: 05-123-35230
Operator: Captiva Energy Partners, LLC
Location: NWSW Section 33-T4N-R68W
County: Weld
State: Colorado
Field: Wattenberg
Elev: 5,054 GR, 5,066 KB
Footages: SHL: 1613' FSL & 219' FWL
BHL: 681' FSL & 1927' FWL

Spud Date: 04/15/12
TD Date: 04/21/12
Completion Date: 05/17/12
Measured TD: 7,906'
TVD: 7,527'
Measured PB depth: 7,852'
Measured TV PB depth: 7,473'

Log Tops
Hygiene 3,809'
Sussex 4,450'
Shannon 4,899'
Niobrara 7,460'
Fort Hays 7,722'
Codell 7,742'

MD
3,809'
4,450'
4,899'
7,460'
7,722'
7,742'



Surface Hole
12-1/4"

Surface Casing & Cement
8-5/8", 24#, J-55, LTC @686 ft, 490 sxs neat cement,
15.0 ppg, yield 1.18
TOC: Surface

Main Hole
7-7/8" to TD

_3,750' - TOC

Production Casing & Cement
4-1/2", 11.6#, N-80 LTC @7,906 ft, cemented w/600 sxs
Lead cement: 300 sxs, Premium Light Cement, 12.5 ppg, yield 2.00
Tail cement: 300 sxs, Class G 50/50 poz, 13.5 ppg, yield 1.71
TOC: 3,750' (from CBL)

_6,028' - Cement basket

Niobrara Completion - 5/17/12
Perf'd from 7,495-97', 7,502-05', 7,575-80', 7,629-32',
7,657-60', 7,668-72', 60 holes, 3 SPF
Frac'd with 200,800 lbs 30/50 white and 4,000 lbs 20/40 SLC sand, 61 BPM

Codell Completion - 5/17/12
Perf'd from 7,744-64', 60 holes, 3 SPF
Frac'd with 150,940 lbs 30/50 white and 4,000 lbs 20/40 SLC sand, 60 BPM

Production Tubing
2-3/8" tubing, set @ 7,725'
w/o packer

Date Created/Updated: 12/10/21