

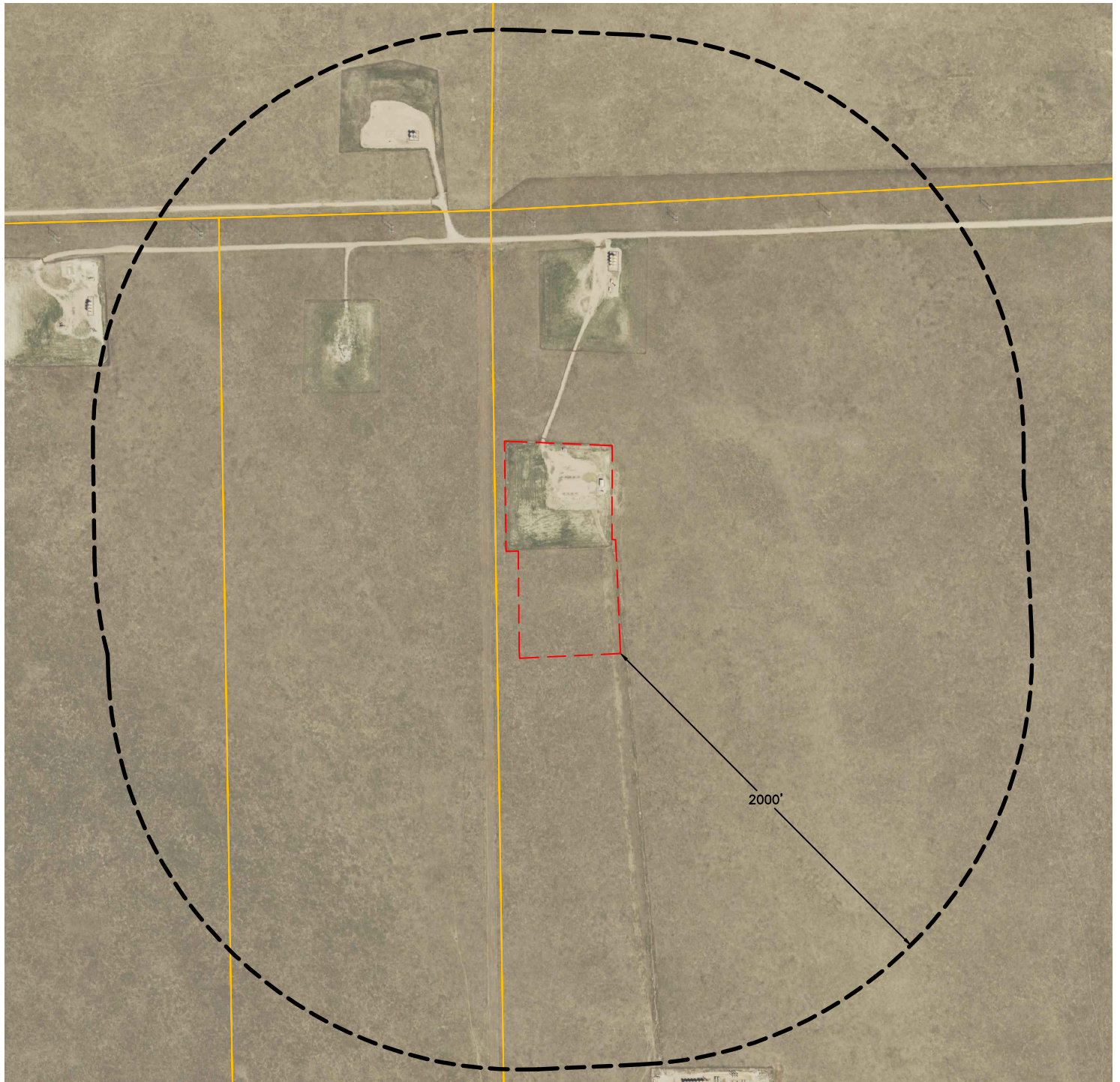


Lat40°, Inc. 6250 W. 10th Street, Unit 2, Greeley, CO 970-515-5294







DISPROPORTIONATELY IMPACTED COMMUNITIES MAP

STATE ANTELOPE B-2 PAD
BONANZA CREEK ENERGY OPERATING COMPANY LLC

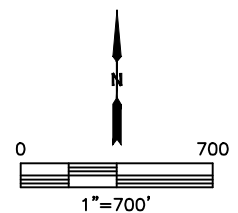
SECTION: 2
TOWNSHIP: 5N
RANGE: 62W
6TH. P.M.
WELD COUNTY, CO



LEGEND

-  OIL AND GAS LOCATION
-  BUFFER
-  DISPROPORTIONATELY IMPACTED COMMUNITY
-  BUILDING
-  BUILDING UNIT
-  RESIDENTIAL BUILDING UNIT

NO DISPROPORTIONATELY IMPACTED COMMUNITIES WITHIN 2000' BUFFER.



DATA SOURCE: COGCC, ACS

DATE: 7/19/2021
PROJECT#: 2021205