

# **SITE SAFETY AND EMERGENCY ACTION PLAN**

**Bonanza Creek Energy Operating Company LLC**



**District Office**

**410 17<sup>th</sup> Street Suite 1400**

**Denver, CO, 80202**

**State Antelope B-2 Pad**

**T5N-R62W**

**Section 2: W/2NW/4 (Lot4, SW/4NW/4)**

**Address:**

**WELD COUNTY, COLORADO**

**Proposed Spud Date: 3rd Quarter 2022**

## **Table of Contents**

### **Section 1 – Signature Page**

### **Section 2 – Site specific information**

- a. Site Safety Requirements
- b. Emergency muster/assembly point(s)
- c. 911 Address and GPS coordinates
- d. Site description
- e. Nearby schools and other High Occupancy Buildings
- f. Directions to project locations
- g. Location of SDS sheets
- h. Location of sign-in sheets, JSA, safety forms

### **Section 3 – Maps & Documents**

- a) Site Map
  - i. 1,000', 2,500' Buffer zones and location of nearest Building Unit(s)
  - ii. Access Map and Muster point(s)

### **Section 4 – List of Emergency Contacts**

- a) Energy Company contact information
- a) Energy Company community/media relations contact information
- b) First responder contact information
- c) Regulatory contact information
- d) Nearest hospital
- e) Spill response organization contact information

### **Section 5 – Spill Response and Reporting**

- a) Spill Response
- b) Spill Reporting

### **Section 6 – Reportable storage quantities**


- a) Reportable quantities
- b) Tier II Reporting

### **Section 7 – Evacuation Information**

- a) Evacuation plan procedures (public)

### **Section 8 – Coordination with First Responder Agencies**

**SECTION 1**  
**SITE SPECIFIC INFORMATION**

Bonanza Creek Energy Operating Company LLC			
Name	Signature	Title	Date
Scott Park		Director – EHS&RC	7/15/2021
Fire District			
Name	Signature	Title	Date

**Weld County Office of Emergency Management**  
*Digitally Signed*



## **SECTION 2**

### **SITE SPECIFIC INFORMATION**

**a) Site Safety Requirements and General Information**

The minimum personal protective equipment (PPE) to enter any Bonanza Creek Energy Operating Company LLC (“Bonanza Creek”) production location includes hard hat, safety glasses, safety toe boots, fire resistant clothing (FRC), and a 4-gas monitor. All contractors and visitors are responsible for providing their employees with the appropriate training on and use of PPE while on Bonanza Creek locations. In addition, all contract personnel entering a Bonanza Creek location to perform work must understand and abide by Bonanza Creek’s contractor expectations relating to environmental, health, and safety requirements.

The primary hazards that any person must be aware of while on an Bonanza Creek production location include, but are not limited to, the potential for release of hydrocarbon gases and/or liquids from production equipment/tanks, heavy truck and equipment traffic, noise, high pressures, and the potential for fire. These hazards can vary depending on the work being performed.

**b) Emergency Muster/Assembly point(s)**

**State Antelope B-2 (W2NW (Lot 4, SWNW) Sec.2, Twn 5N,R 62W)-** Bonanza Creek operations occur in rural areas with optimal visibility around the location. This provides for unobstructed views of the surrounding area. In the event of an emergency, the workers are instructed to muster off-location (outside the perimeter of the location) on the upwind side. As wind direction and intensity may vary, a distinct muster location is not formally identified. In the event of an emergency, workers will assess the wind direction and muster in the appropriate direction. Once personnel have mustered off-location they will work with Bonanza Creek management and emergency response personnel to determine if an additional muster area is necessary at a point further from the location.

**c) 911 Address and GPS coordinates**

**LOC ID# –** COGCC Location ID: 159738 (Existing Location)

**Legal Description –** W2NW (Lot 4, SWNW) Section 2, Township 5 North, Range 62 West

**Address -** \* Address Pending

**Directions:** From the intersection of CR 52 and CR 89, drive north on CR 89 for 5 miles, turn left onto an existing access road (Unmaintained County Road 62), drive west for 3.9 miles, turn left onto an existing oil and gas access road, drive south on access road for 0.2 miles to the State Antelope B-2 Location.

**Town, CO Zip –** Wiggins, CO 80649

**Lat/Long:** 40.43224, -104.29884

**d) Site description**

The **State Antelope B-2** Pad is an existing Bonanza Creek Oil and Gas Location that will be expanded for the drilling and completion of eleven (11) new horizontal oil and gas wells. During the Construction Phase, the site will be occupied by various pieces of drilling and completions equipment. After the Construction Phase and the wells are actively producing, the site will consist of nineteen (19) total oil and gas wells and associated production equipment. There will be no crude oil storage tanks or produced water tanks on the location. One (1) Maintenance tank will be on site and will be located inside a lined secondary containment structure.

**e) Nearby schools and other High Occupancy Buildings**

None within 2500' of location.

**f) Directions to Project Locations**

**State Antelope B-2 (W2NW (Lot 4, SWNW) Sec.2, Twn 5N,R 62W)**

From the intersection of CR 52 and CR 89, drive north on CR 89 for 5 miles, turn left onto an existing access road (Unmaintained County Road 62), drive west for 3.9 miles, turn left onto an existing oil and gas access road, drive south on access road for 0.2 miles to the State Antelope B-2 Location.

**g) Location of SDS sheets, Sign-In Sheets, JSAs, and Safety Forms**

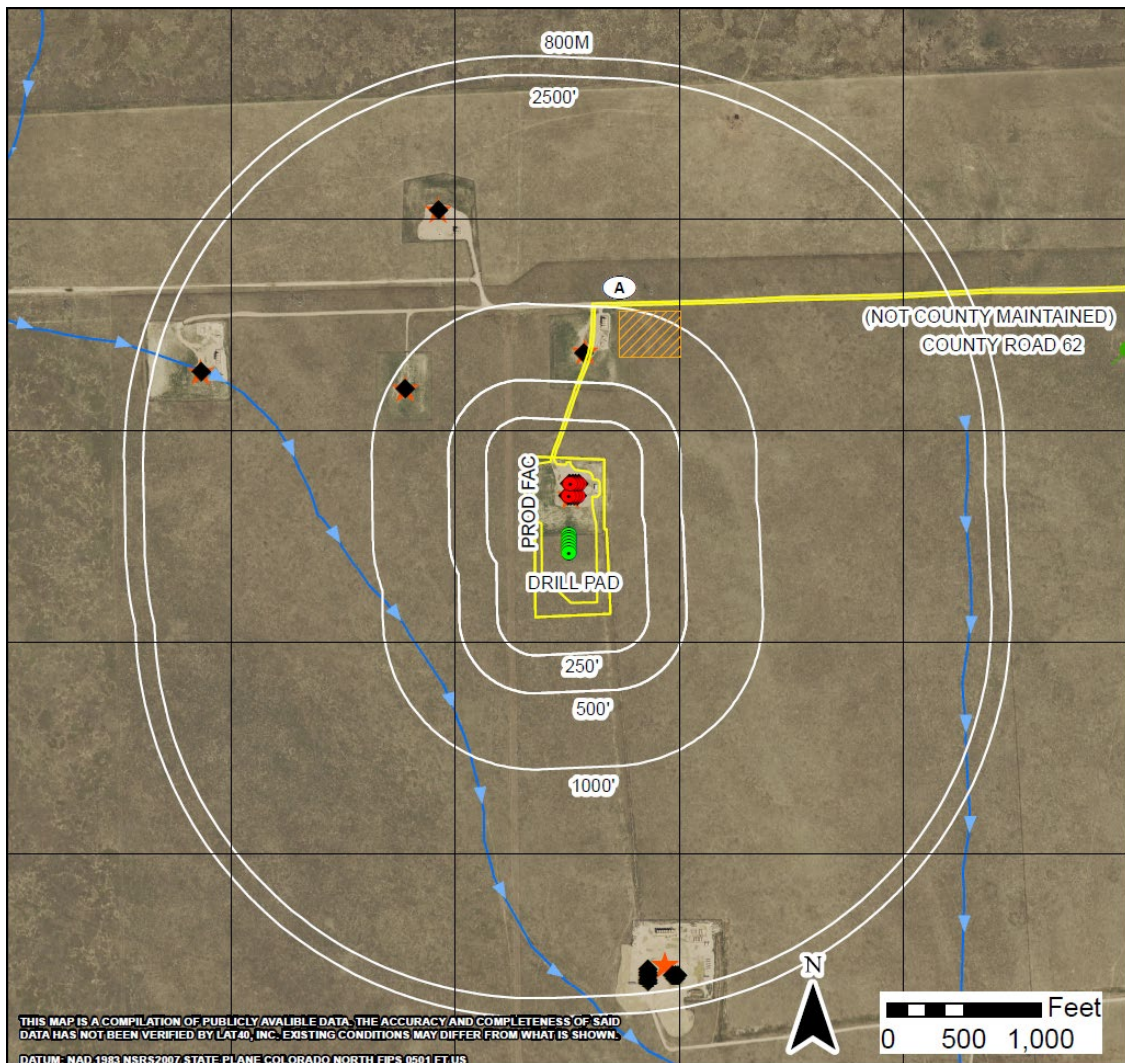
Depending on the operations taking place on location, the chemicals that may be present will vary. Regardless, hazard communication is a critical safety measure and Safety Data Sheets (SDS's) are available online through the Site Hawk website. This website is an online portal that stores all active SDS's associated with Bonanza Creek's operations.

During drilling and completion activities all employees and approved visitors to the **State Antelope B-2 pad** will be required to enter through a manned security checkpoint or the company man trailer at the location entrance where visitors will be required to sign in and will be provided with a detailed safety briefing of current operations and all safety precautions that must be adhered to while on location. In addition, all who enter the location must also sign out upon their departure. Security personnel are required to account for all persons entering or leaving location during active operations and in the event of an incident.

Once drilling and completion activities are finalized, the site will transition to its production phase and no unauthorized personnel will be allowed on location without first contacting a company representative. At this point, the primary chemicals stored on site will be crude oil and produced water.

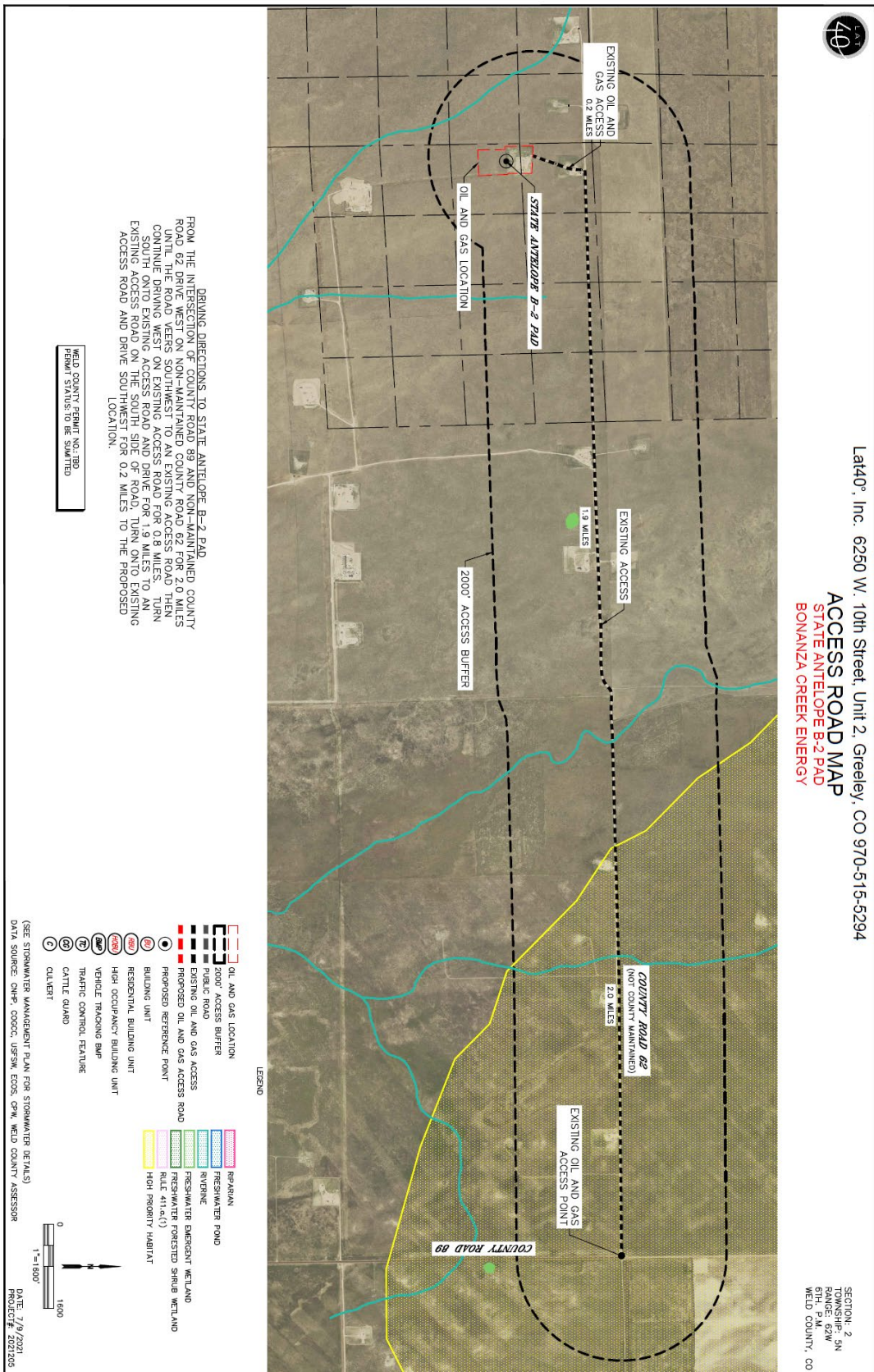
## **Section 3**

**1000-Foot Buffer Area 2,500=Foot Buffer Area, Project Location and Muster Point**





## Access Road Map



## Section 4

### **List of Emergency Contacts**

**a) Energy Company**

Name	Office Phone	Emergency/Cell
Corporate Office 410 17 <sup>th</sup> Street Denver, CO 80202	720-440-6100	1-800-578-5610
Field Office 4301 Industrial Pkwy Evans, CO 80620	970-356-1259	1-800-578-5610
Bonanza Creek EHS on call emergency number		1-800-578-5610
EHS Director: Scott Park	720-225-6696	970-415-0778
EHS – Safety: Sam Robles	970-573-3119	720-346-2378
EHS – Environmental: Luke Kelly		720-315-8934

**b) Energy Company community/media relations**

Name	Office	Cell Phone
Skip Marter	720-225-6697	303-885-9716

**c) First Responders**

Name	Emergency	Office Number
Wiggins – Wiggins Fire Protection District – Wiggins Station	911	970-483-6666
Wiggins – Wiggins Fire Protection District – Hoyt Station	911	970-483-55555
Wiggins – Wiggins Fire Protection District – Goodrich Station	911	970-645-1000
Weld County Sheriff	911	970-356-4015
Colorado State Highway Patrol	911	970-506-4999

**d) Regulator Contacts**

Name	Office Phone
COGCC	303-894-2100
CDPHE	877-518-5608
Colorado Parks & Wildlife	303-291-7227
National Response Center	800-424-8802



**e) Medical Facilities**

Name	Office Phone
Northern Colorado Medical Center	970-352-4121
Medical Center of the Rockies	970-624-2500

**f) Spill Response Organization**

Name	Office Phone	Cell Phone
CTEH	800-916-8233	NA
Custom Environmental Services	800-310-7445	NA

**g) Fire, explosion, associated with loss of well control**

Name	Office Phone
Wiggins – Wiggins Fire Protection District – Wiggins Station	970-483-6666
Wiggins – Wiggins Fire Protection District – Hoyt Station	970-483-5555
Wiggins – Wiggins Fire Protection District – Goodrich Station	970-645-1000
Wild Well Control, Inc.	281-353-5481
Northern Colorado Medical Facility (Burn Unit)	970-810-4121
Weld County Office of Emergency Management (Roy Rudisill)	970-304-6540

**h) Government Agencies**

Name	Office Phone
Wiggins Police Department	911 or 970-483-7747
Weld County Sheriff's Office	911 or 970-356-4015
COGCC	303-894-2100
CDPHE	877-518-5608
Weld County (Jason Maxey, LGD)	970-400-3579

**i) Railroad Emergency Response**

Name	Office Phone
Union Pacific Railroad	888-877-7267

## **Section 5**

### **Spill Response and Clean Up**

#### **a) Spill Response**

There are multiple types of hydrocarbons which can be released/spilled during oil and gas production and exploration. Most commonly released are unrefined products such as crude oil and produced water. Refined petroleum products such as diesel, gasoline, and motor oil spills are less common, but still equally important to mitigate. If a spill is found to be reportable, it will be mitigated in accordance with Colorado Oil and Gas Conservation Commission (COGCC) and/or Colorado Department of Public Health and Environment (CDPHE) regulations.

Once a release has been identified, it will be immediately stopped and contained if possible and if safe to do so. When containing a spill; absorbent blankets, booms, or earthen berms will be constructed around the release to keep material from spreading. Bonanza Creek and the contract response company will provide these materials. Diligent efforts will be made to minimize contact with live vegetation or open water if release is outside of secondary containment structures.

In the event of a large incident requiring outside assistance, Bonanza Creek has contracted CTEH and CES. CTEH and CES possess a working knowledge of oil and gas operations, emergency response and Incident Command. Once notified Bonanza Creek personnel can be on location within 2 hours.

#### **b) Spill Reporting**

What determines a reportable spill and to whom does the report go?

- A spill/release will be reported to the COGCC if released material is property of Bonanza Creek and meets the COGCC reporting thresholds (see below), an example would be crude oil released from a separator or produced water from a water vault.
- A spill/release will be reported to the Weld County LEPC if released material is property of Bonanza Creek and meets the COGCC reporting thresholds (see below),
- A spill/release will be reported to the CDPHE if released material is in the custody of a third party for spills that meet CDPHE reporting thresholds, are of any size that impact or threaten to impact waters of the state, a residence or occupied structure, livestock or public byway. An example would be an oil hauler over filling a truck and spills product onto the ground next to a flowing irrigation ditch.

There are four release volume thresholds, which determine if a hydrocarbon spill is reportable. These are:

1. If crude oil or produced water is released **INSIDE** secondary containment and volume is greater than **5 barrels**.
2. If crude oil or produced water is **OUTSIDE** secondary containment and volume is greater than **1 barrel**.
3. If more than **25 gallons** of petroleum product such as diesel, gasoline or motor oil is spilled **OUTSIDE** of secondary containment.
4. Any volume of crude oil, produced water, or petroleum product released to water.

Once a spill is determined reportable, there is a 24-hour deadline to make initial notification to the COGCC or CDPHE depending on product ownership. Spills/releases in the custody of Bonanza Creek will be reported by a Company representative. Spills/releases in the custody of a third party will be reported by the responsible company's EHS Department to the appropriate agency and to Bonanza Creek.

These regulatory guidelines will be strictly followed by Bonanza Creek and any contractors operating under Bonanza Creek guidance during all activities at the Bonanza Creek **State Antelope B-2 Pad**.

## **Section 6**

### **Reportable quantities**

#### **a) Reportable quantities**

Mandated by Section 312 of the Emergency Planning and Community Right-To-Know Act (EPCRA) – also known as SARA Title III – the Tier II form captures information about the types, quantities, and locations of hazardous chemicals at a given facility. The form also lists contact information for the facility’s designated emergency point-of-contact.

Facilities with chemicals in quantities that equal or exceed the lists of lists thresholds must submit annual reports.

Bonanza typically reports crude oil, produced water, and methanol in excess of the Tier II reporting thresholds.

#### **b. Reportable requirements**

If your facility will meet the requirements under 40 CFR, you must submit your Tier II report to the state every year before March 1<sup>st</sup>.

These regulatory guidelines will be strictly followed by Bonanza Creek and any contractors operating under Bonanza Creek guidance during all activities at the Bonanza Creek **State Antelope B-2 Pad**

## **Section 7**

### **Evacuation Information**

#### **a. Evacuation Plan Procedures (public)**

The procedure to be used in alerting nearby persons in the event of any occurrence that could pose a threat to life or property will be arranged and completed with public officials.

In the event of an actual emergency, the following steps will be immediately taken:

1. The Bonanza Creek representative will immediately notify proper authorities, including the sheriff's office, highway patrol, and any other public officials and will enlist their assistance in warning residents and transients of the hazards present.
2. Bonanza Creek will coordinate with local authorities to warn residents' down-wind of the location and within a certain distance, which will be determined at the time of exposure based on the specific details of the incident. Additional evacuation zones may be necessary as the situation warrants.
3. A Bonanza Creek representative will coordinate with appropriate emergency personnel to divert traffic in the vicinity away from the potentially dangerous area. No trespassing and warning signs will be posted at the entrance to the well site. The contract company will monitor essential and non-essential traffic on-site.
4. General:
  - a. The area included within the radius of exposure is considered to be the zone with the maximum potential hazard. When it is determined that conditions exist which create an additional area (beyond the initial zone of maximum potential hazard) vulnerable to possible hazard, public areas in the additional hazardous area will be evacuated.
  - b. In the event of a large uncontrolled incident, after the public areas have been evacuated and traffic stopped, it is expected that local civil authorities will have arrived and within a few hours will have assumed direction of and control of the public, including all public areas. Bonanza Creek will cooperate with these authorities to the fullest extent.
  - c. Bonanza Creek will dispatch appropriate personnel to the site as soon as possible. The company's personnel will cooperate with and provide such information to civil authorities as they might require.

## **Section 8**

### **Coordination with First Responder Agencies**

- a) Bonanza Creek will communicate active heavy equipment operations to the Weld County Office of Emergency Management for coordination/communication with local first responders. Notice will be provided that identifies where the drilling rig (and associated well spud) will occur for the following month. The drilling rig tracker table, which is also submitted to the Weld County Oil and Gas Energy Department, will be submitted monthly. The table communicates the drilling rig location for the following month as well as additional site information (see below).

<b>Active Rig Tracker</b>							<b>November-19</b>
<b>Operator Name</b>	<b>Rig Name</b>	<b>Location Name</b>	<b>Legal Description</b>				<b>WOGLA #</b>
			TWN	RNG	SEC	QTR/QTR	

- b) In the event of an emergency requiring First Responders, Unified Command will be established between the Bonanza Creek appointed company man on location and First Responders present. Unified Command post will be established based on conditions present at time of incident.
- c) While foam is not currently supplied for oil and gas emergency response, Bonanza Creek is an active member of Front Range Emergency Resource Cooperative (FRERC) and a solution is being sought to stockpile portable foam trailers for emergency response efforts.
- d) Bonanza Creek EHS representative and first responders identified in this Site Safety and Emergency Action Plan have reviewed this plan and discussed coordination efforts in the event of an emergency situation requiring first responder assistance.