





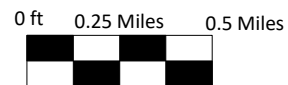


Vaquero #1  
 St. Croix Operating, Inc.  
 NENW S11 T3S R50W  
 NRCS Soil Types Drawing

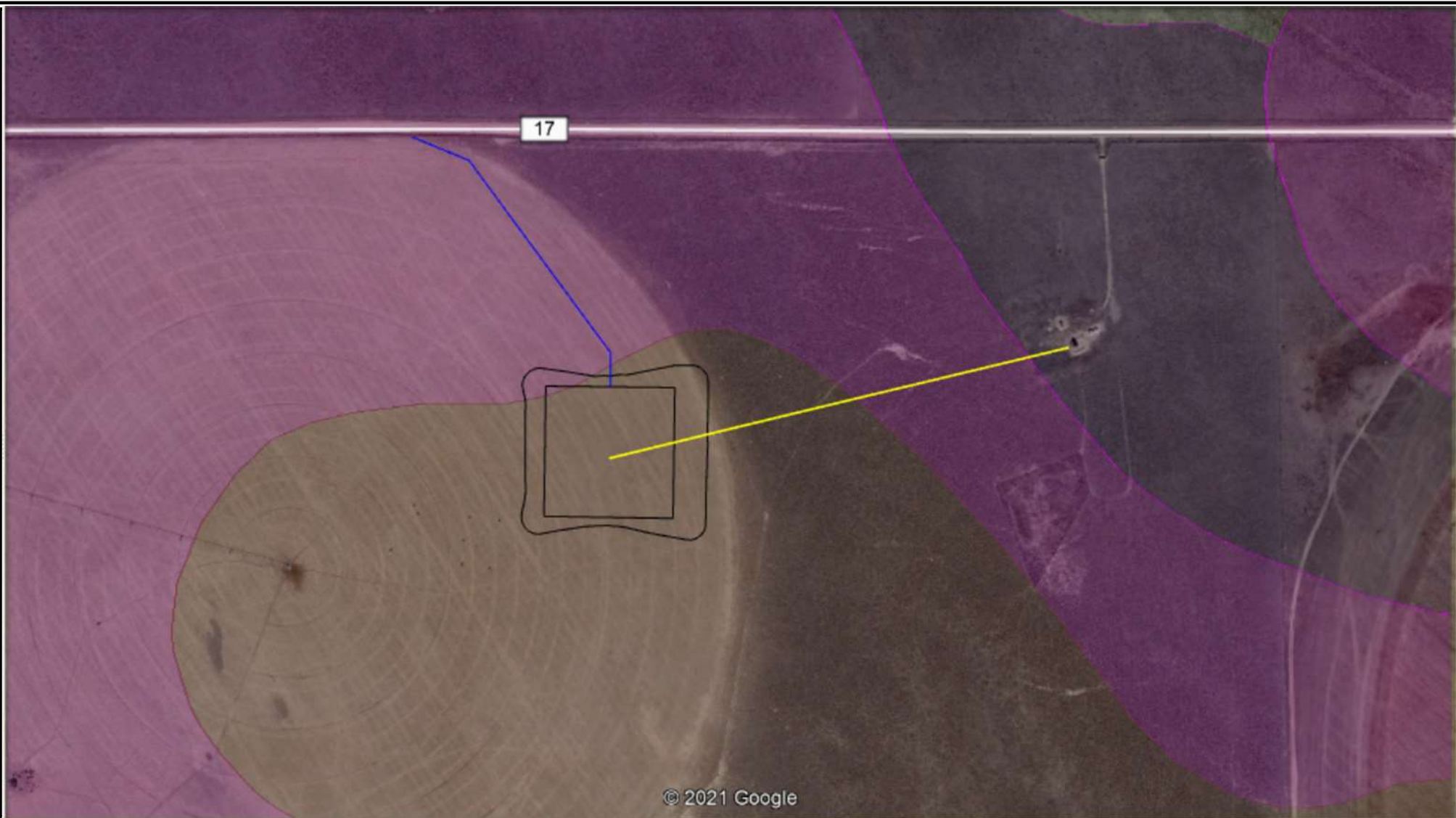
**Legend**

- |  |                           |   |                                |
|--|---------------------------|---|--------------------------------|
|  | 71 – Valent Sand, Rolling |  | Proposed Off-Location Flowline |
|  | 70 – Valent Sand          |  | Proposed Access Road           |
|  | 30 – Julesburg Loamy Sand |  | Location Boundary              |



Prepared By:  
 Ardor Environmental LLC

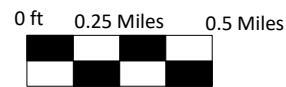
August 18, 2021



Vaquero #1  
St. Croix Operating, Inc.  
NENW S11 T3S R50W  
NRCS Soil Types Drawing

**Legend**

- |  |                           |   |                                |
|--|---------------------------|---|--------------------------------|
|  | 71 – Valent Sand, Rolling |  | Proposed Off-Location Flowline |
|  | 70 – Valent Sand          |  | Proposed Access Road           |
|  | 30 – Julesburg Loamy Sand |  | Location Boundary              |



Prepared By:  
Ardor Environmental LLC

August 18, 2021