

# Interim Reclamation Inspection

December 8, 2021

Operator: KERR MCGEE OIL & GAS ONSHORE LP #47120

Location ID: 323207

Inspection Document #: 697503550

Weld County, CO

NESE Section 9 T1N R68W

Chris Binschus  
Reclamation Specialist, COGCC



**COLORADO**

**Oil & Gas Conservation  
Commission**

Department of Natural Resources

Inspection Photos

Location Name: CHAMPLIN 86 AMOCO I #1

Location ID: 323207



**Photo 1.** COGCC drone aerial imagery illustrating the approximate well location (red box) for the subject complaint matter.



**COLORADO**  
Oil & Gas Conservation  
Commission

Department of Natural Resources

Inspection Number: 697503550



Inspection Photos  
Location Name: CHAMPLIN 86 AMOCO I #1  
Location ID: 323207

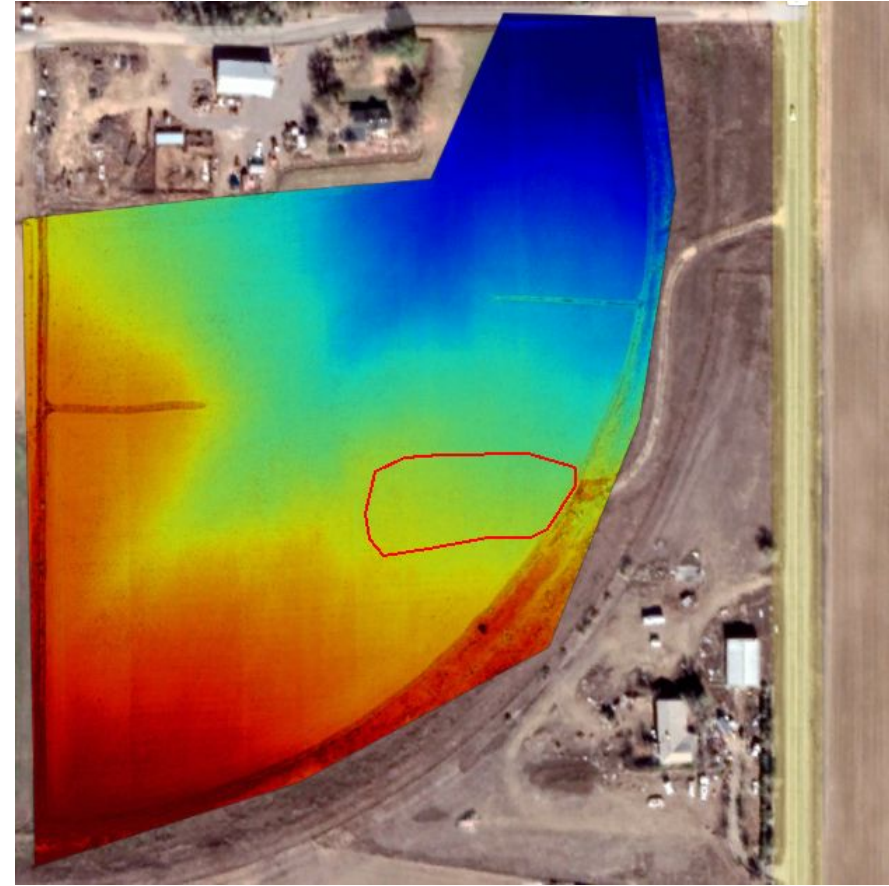


**Photo 2.** COGCC drone aerial imagery illustrating the approximate well location (red box) for the subject complaint matter.

Inspection Photos  
Location Name: CHAMPLIN 86 AMOCO I #1  
Location ID: 323207



**Photo 3.** Google Earth aerial imagery from 10/25/2019. Photo illustrates the well location.



**Photo 4.** COGCC drone elevation imagery overlaid with Google Earth aerial imagery from 10/25/2019.

The well location is outlined in red. Flood irrigation travels south to north; red being higher elevation and dark blue being lowest elevation.

Inspection Number: 697503550



Inspection Photos  
Location Name: CHAMPLIN 86 AMOCO I #1  
Location ID: 323207



**Photo 5.** Photo taken north of the well location, facing Southeast. Photo illustrates the current vegetation conditions that are reflective at the time of this inspection. Vegetation consists of brome grass, orchard grass, ryegrass, fescue and some alfalfa.

The reddish vegetation consists of brome grass and the greenish vegetation is orchard grass, ryegrass and fescue.