



PATRIOT
WELL SOLUTIONS

**CEMENT BOND
GAMMA RAY
CCL LOG**

Company ANADARKO PETROLEUM CORP
Well COOLEY 35-16
Field WATTENBURG
County WELD
State CO Country USA

Company ANADARKO PETROLEUM CORP
Well COOLEY 35-16
Field WATTENBURG
County WELD
State CO Country USA

Location: 939' FSL & 1161' FWL
SW SW
API #: 05-123-32279
SEC 16 TWP 2N RGE 68W
Elevation
K.B: 4899
D.F: 4898
G.L.

Other Services

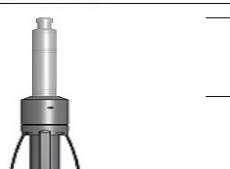
Date 9/22/2021
Run Number RUN 1 PASS 4
Depth Driller
Depth Logger
Bottom Logged Interval 1330'
Top Log Interval
Open Hole Size N/A
Type Fluid WATER
Density / Viscosity NA
Max. Recorded Temp. NA
Estimated Cement Top NA
Time Well Ready 11:00
Time Well Ready 11:30
Time Logger on Bottom 1096
Equipment Number
Location BRIGHTON
Recorded By J PINSON
Witnessed By MR K WISER

Borehole Record				Tubing Record			
Run Number	Bit	From	To	Size	Weight	From	To
				3.5"	7.7#	692'	SURFACE
Casing Record		Size		Mgt/Ft	Top		Bottom
Surface String							
Prot. String							
Production String		4.5		11.6			
Liner							

<<< Fold Here >>>

All interpretations are opinions based on inferences from electrical or other measurements and we cannot and do not guarantee the accuracy or correctness of any interpretation, and we shall not, except in the case of gross or willful negligence on our part, be liable or responsible for any loss, costs, damages, or expenses incurred or sustained by anyone resulting from any interpretation made by any of our officers, agents or employees. These interpretations are also subject to our general terms and conditions set out in our current Price Schedule.

Comments

Sensor	Offset (ft)	Schematic	Description	Length (ft)	O.D. (in)	Weight (lb)
			Cable_Head-1_7/16 Titan 1 7/16" Cable Head	1.02	1.44	3.31

			Centralizers-8071-275-200 Tekco 2 3/4" Adjustable Centralizer	2.73	2.75	25.00
WVFCAL	18.73					
WVFS8	16.31					
WVFS7	16.31		SCBLTEKSECT-275 No Temp (111) TekCo 2 3/4" 400 Deg F Sector Tool with No Temperature	9.13	2.75	102.00
WVFS6	16.31					
WVFS5	16.31					
WVFS4	16.31					
WVFS3	16.31					
WVFS2	16.31					
WVFS1	16.31					
WVF3FT	15.56					
WVF5FT	14.56					
WVFSYNC	11.23					
			Centralizers-8071-275-200 Tekco 2 3/4" Adjustable Centralizer	2.73	2.75	25.00
CCL	7.35		CCL-275tekco (111) Tekco 2 3/4" 450 Deg. F Rare Earth Magnets	1.83	2.75	33.00
			GR-Tek-Co 2 3/4 (0111) Tekco 2 3/4" 400 Deg. F Logging Gamma Ray	3.67	2.75	40.00
GR	4.04					
			Centralizers-8071-275-200 Tekco 2 3/4" Adjustable Centralizer	2.73	2.75	25.00
			Bull_Plug-1_7/16_GO Titan 1 7/16" Female Bull Plug	0.27	1.44	1.00

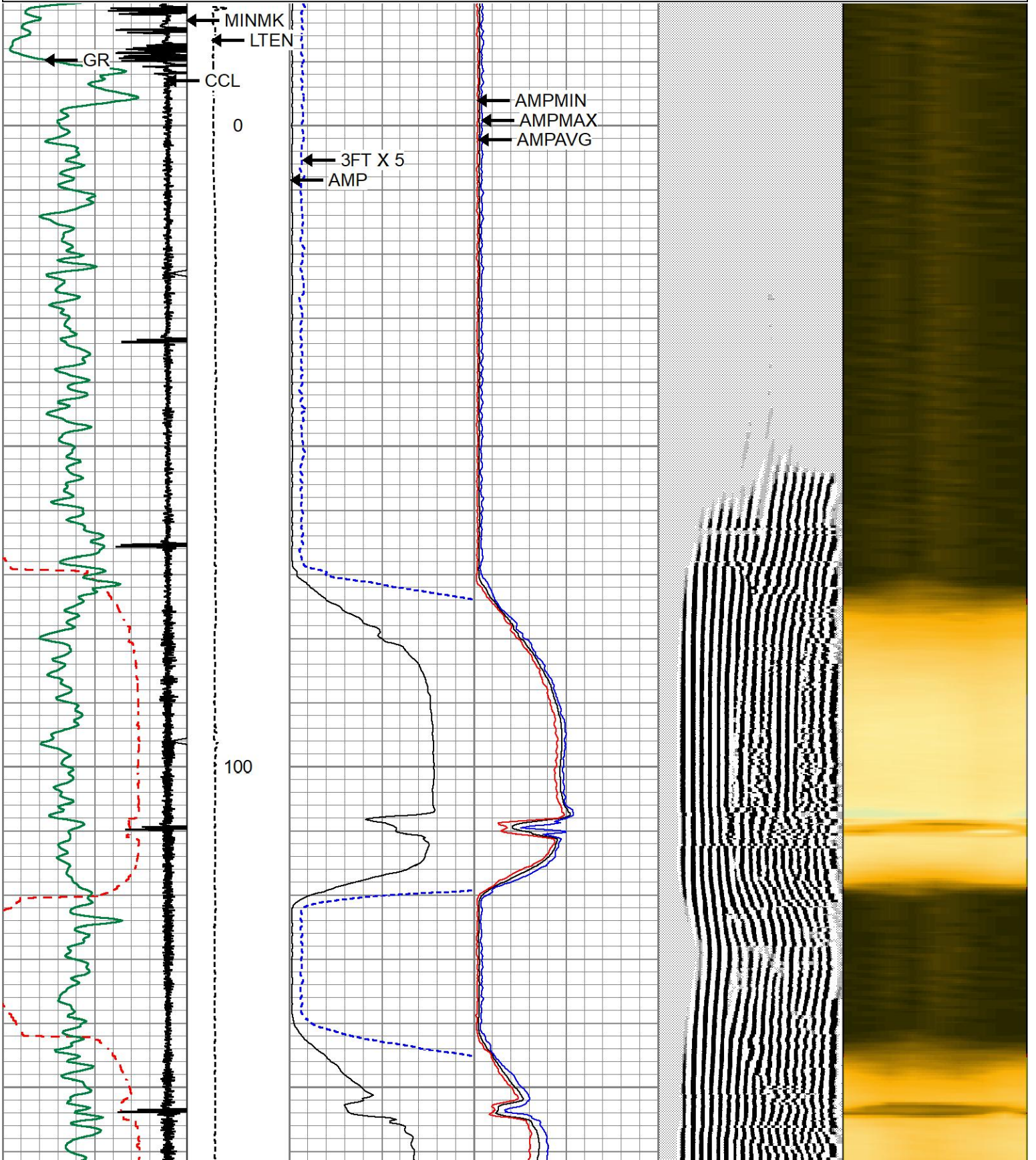
Dataset: anadarko_cooley35-16_0512332279_09-22-21_scbl.db: field/well/run1/pass4.1
 Total length: 24.10 ft
 Total weight: 254.31 lb
 O.D.: 2.75 in

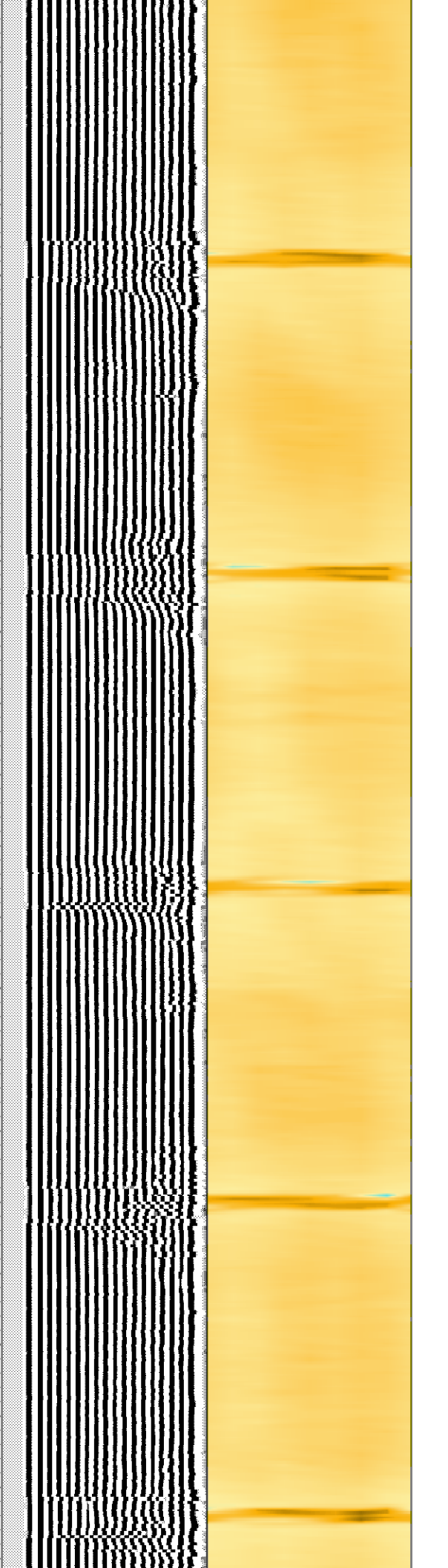
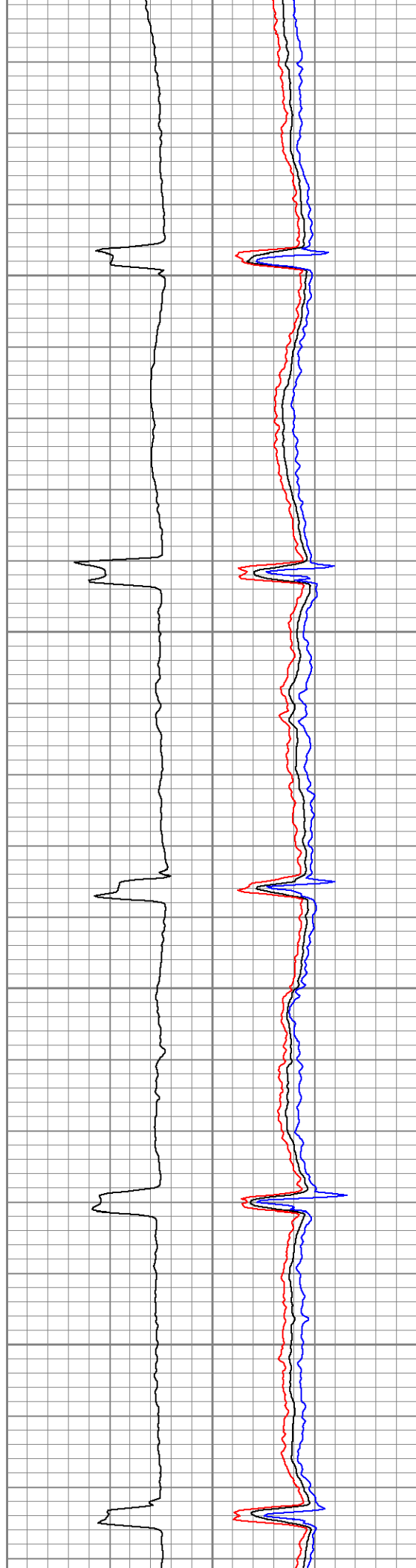
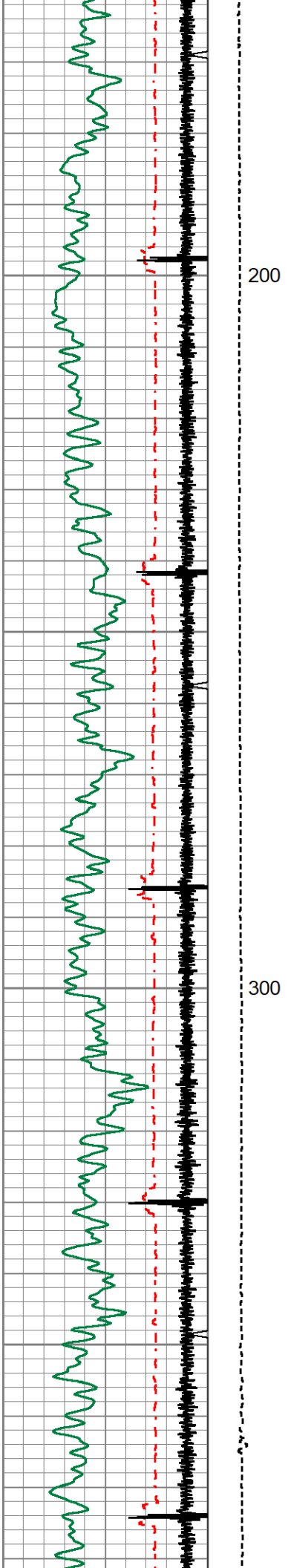


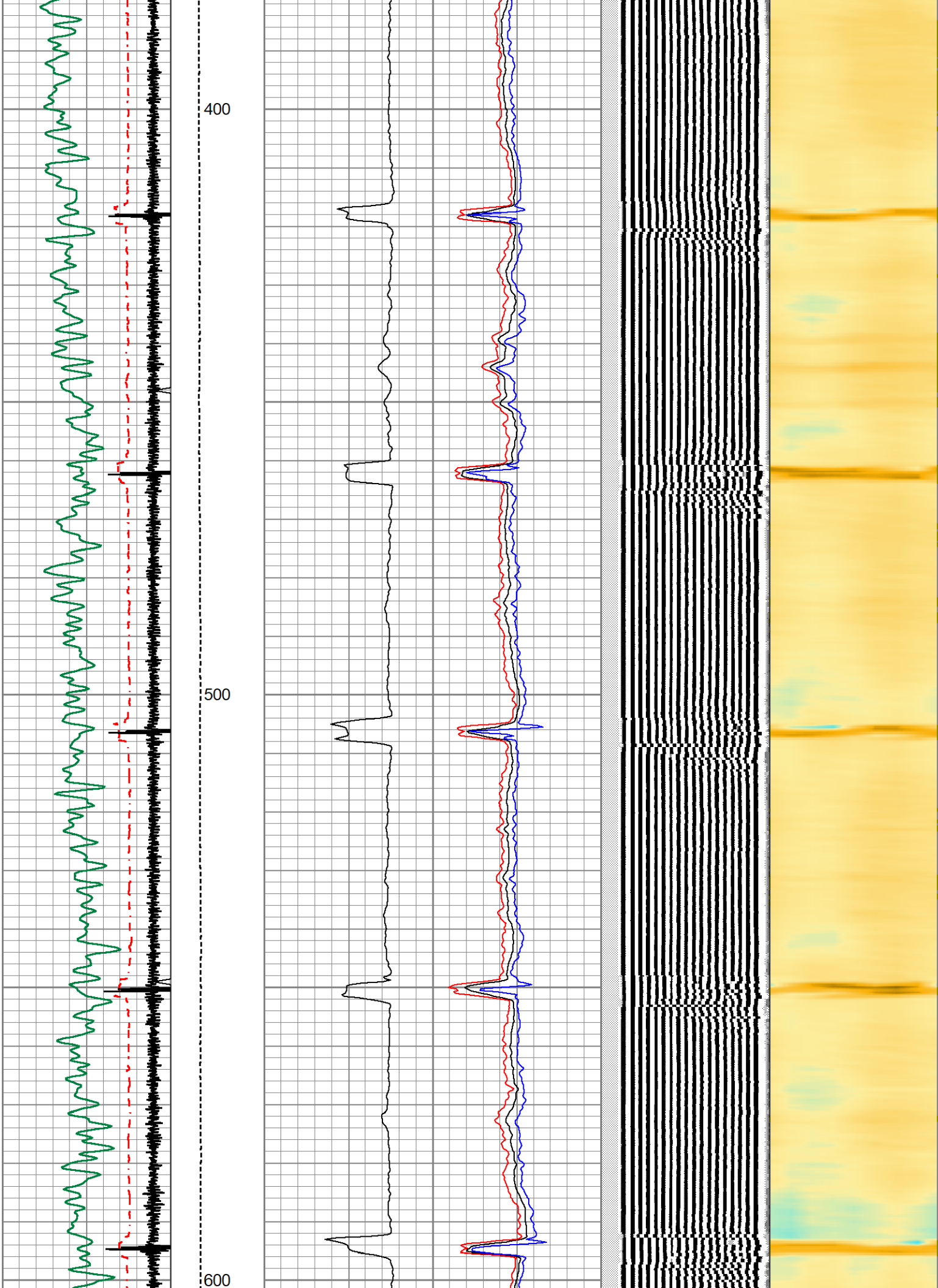
MAIN PASS

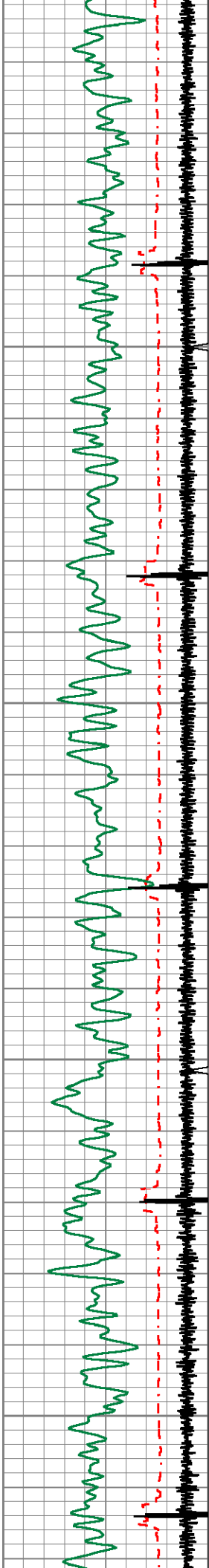
Database File anadarko_cooley35-16_0512332279_09-22-21_scbl.db
 Dataset Pathname pass4.1
 Presentation Format 1patriotradii
 Dataset Creation Wed Sep 22 11:53:31 2021
 Charted by Depth in Feet scaled 1:240

283	TT (usec)	183	LTEN	0	AMP (mV)	100	0	AMPAVG	100	200	VDL (usec)	1200	1	RADIAL MAP	8
0	GR (GAPI)	150	0	(lb/1000)	0	3FT X 5 (mV)	20	0	AMPMAX	100					
9	CCL	-1						0	AMPMIN	100					



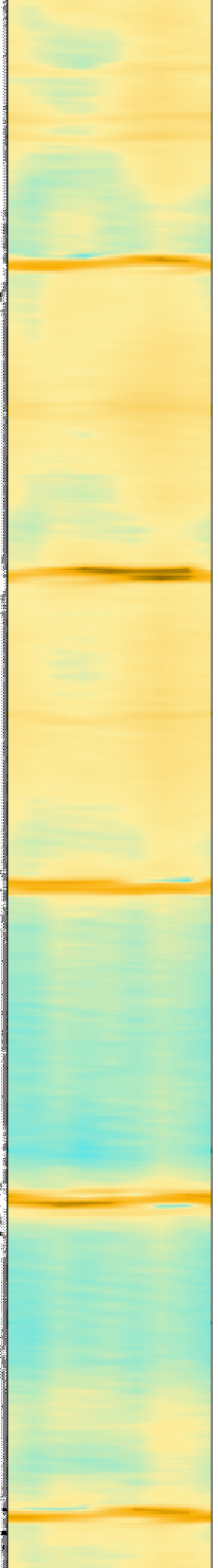
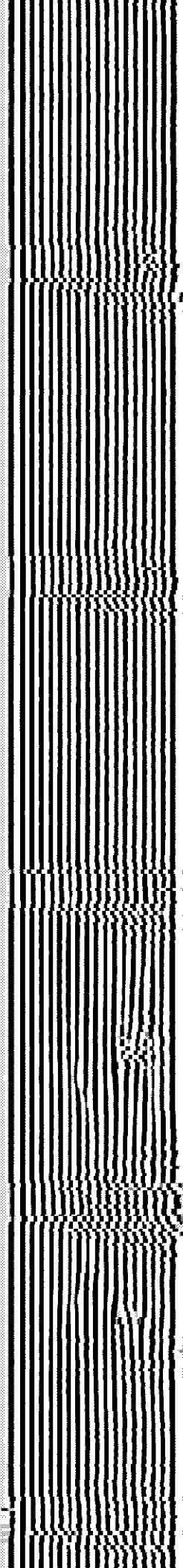
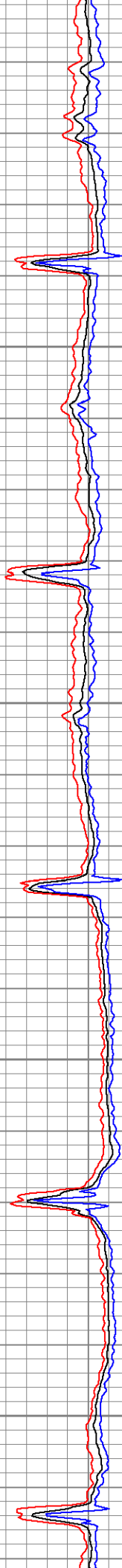
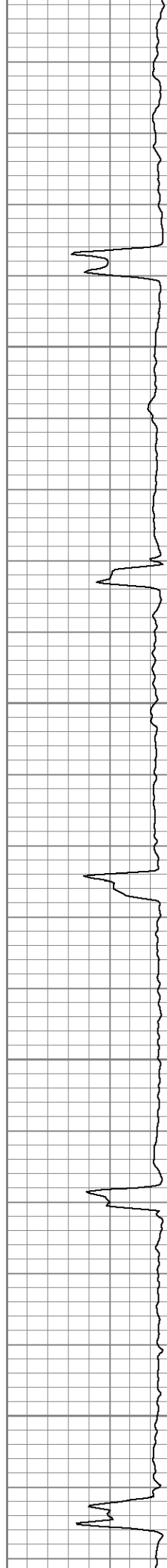


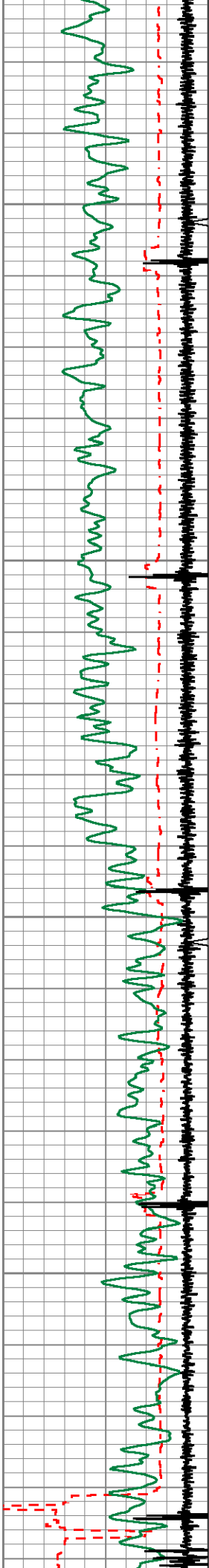




700

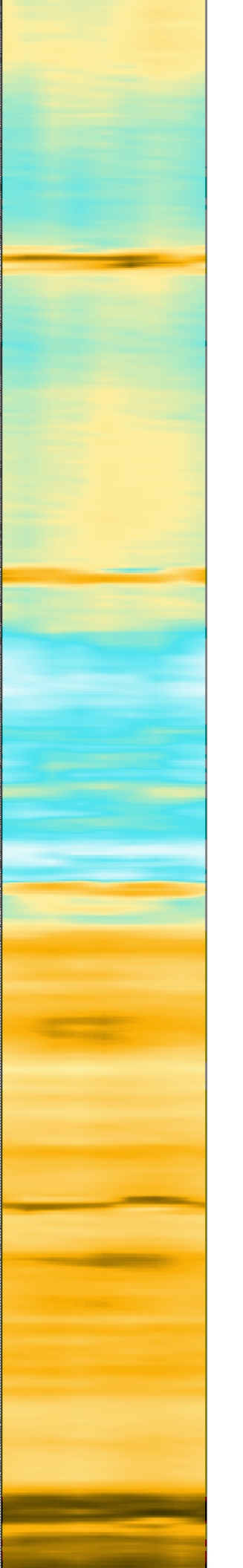
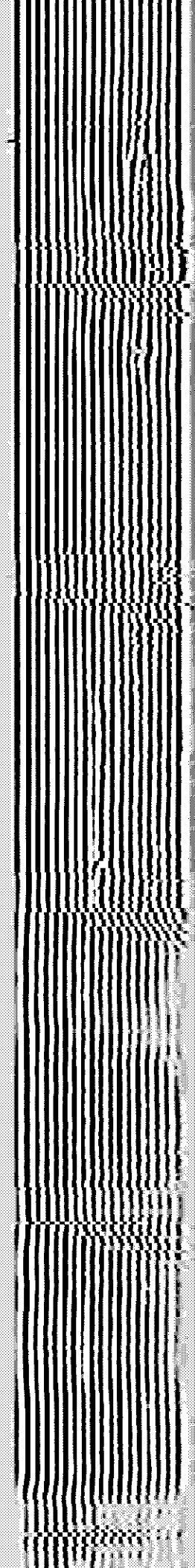
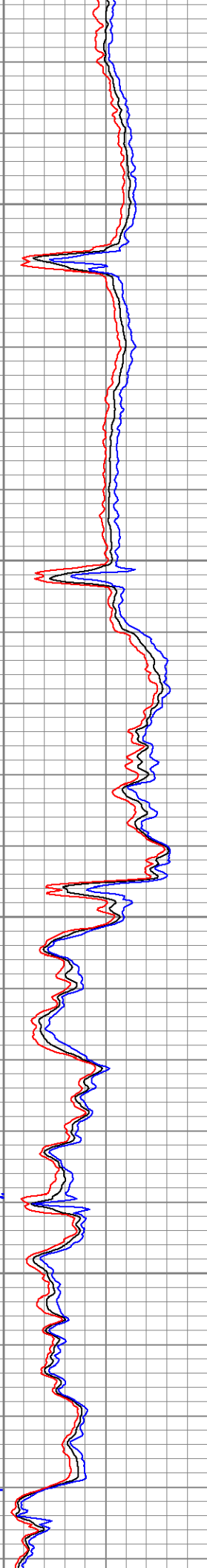
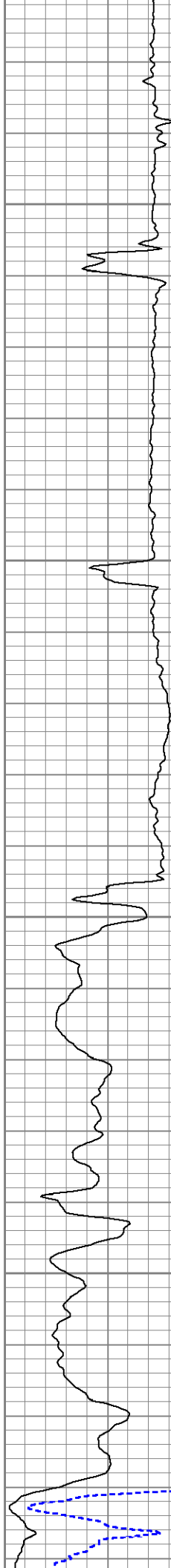
800

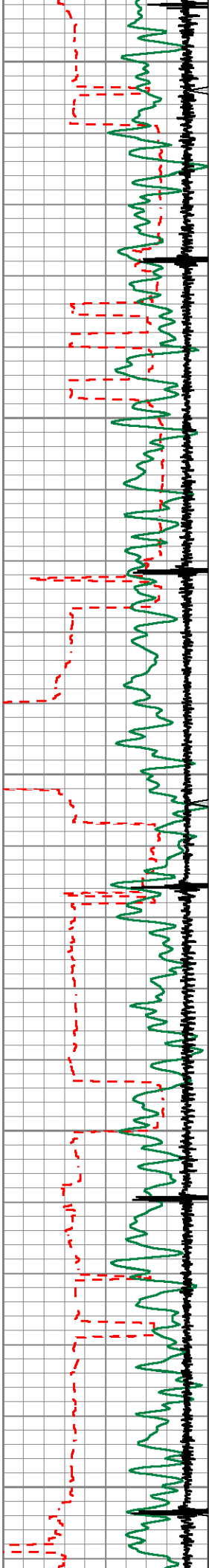




900

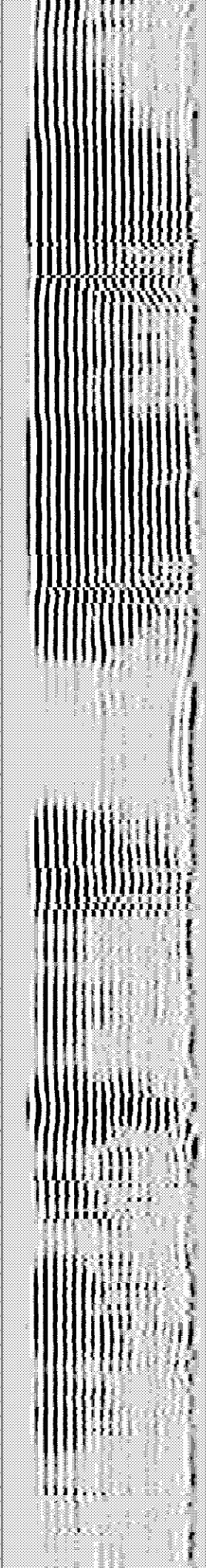
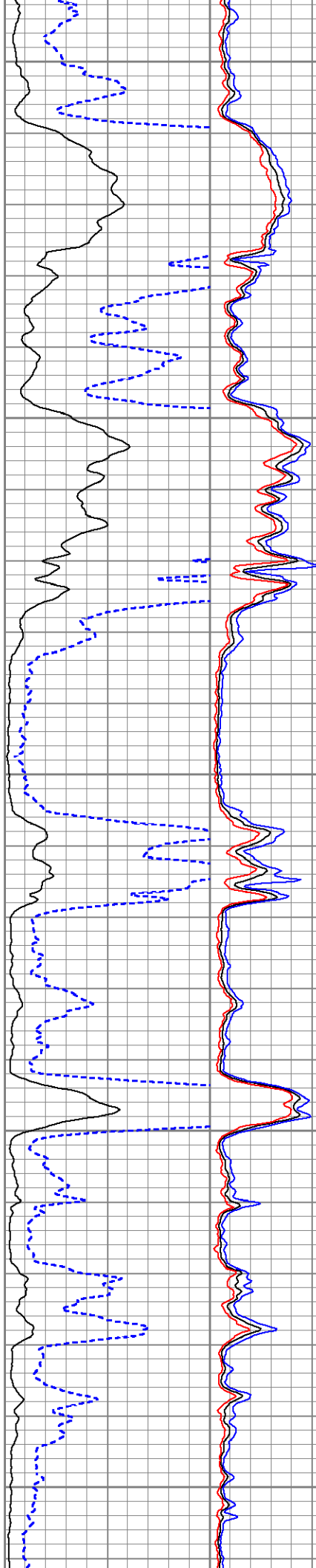
1000

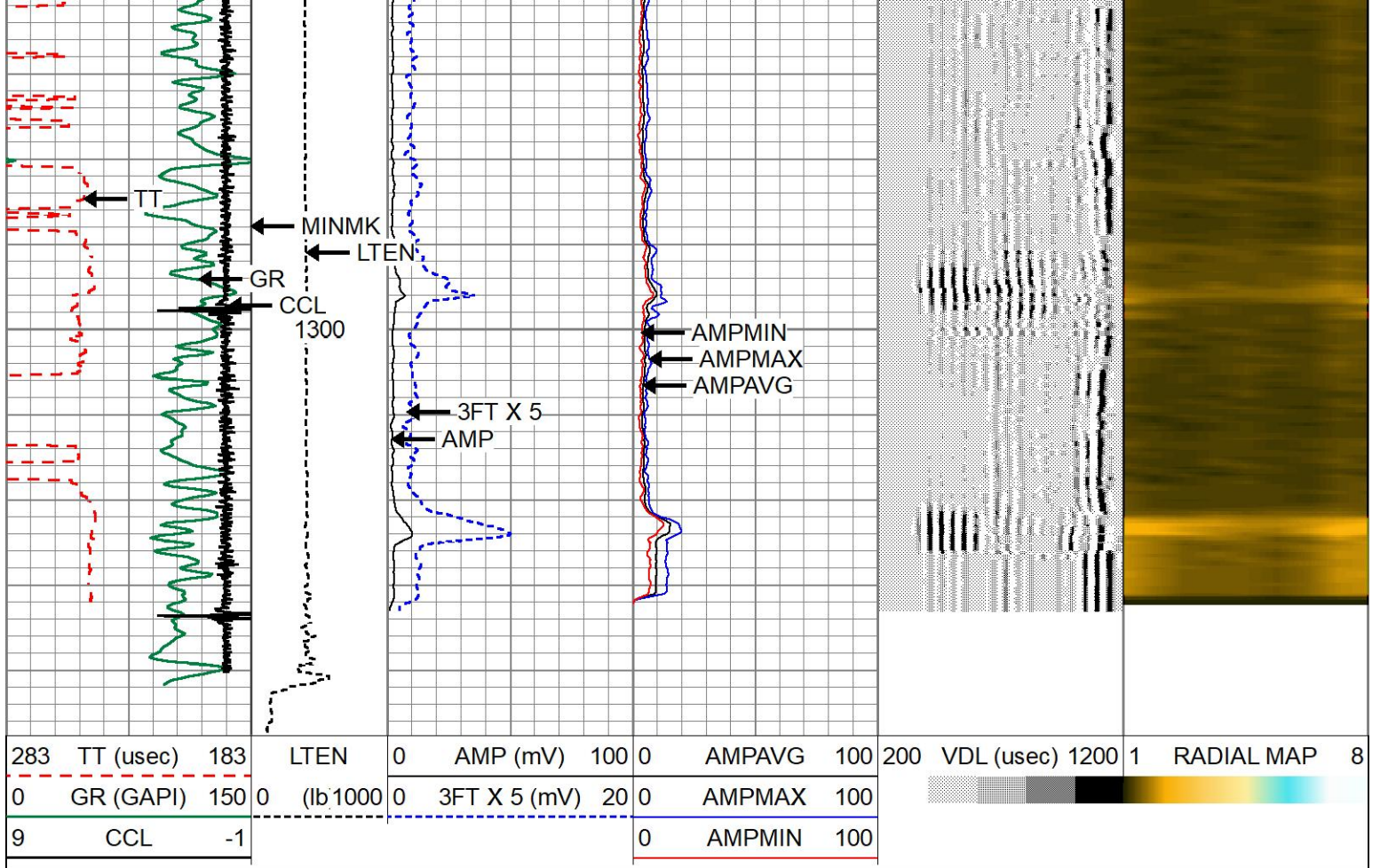





1100

1200





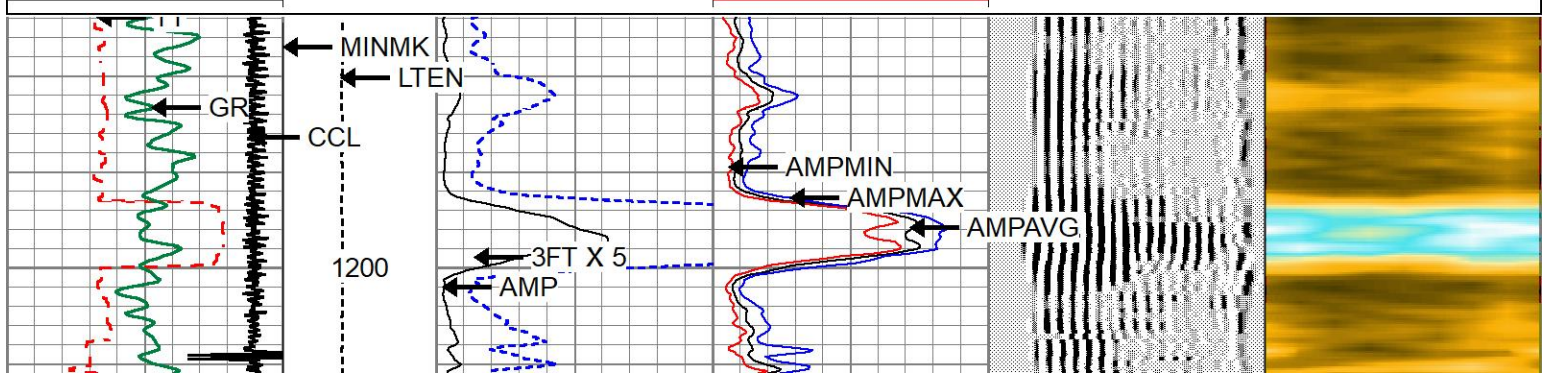

MAIN PASS

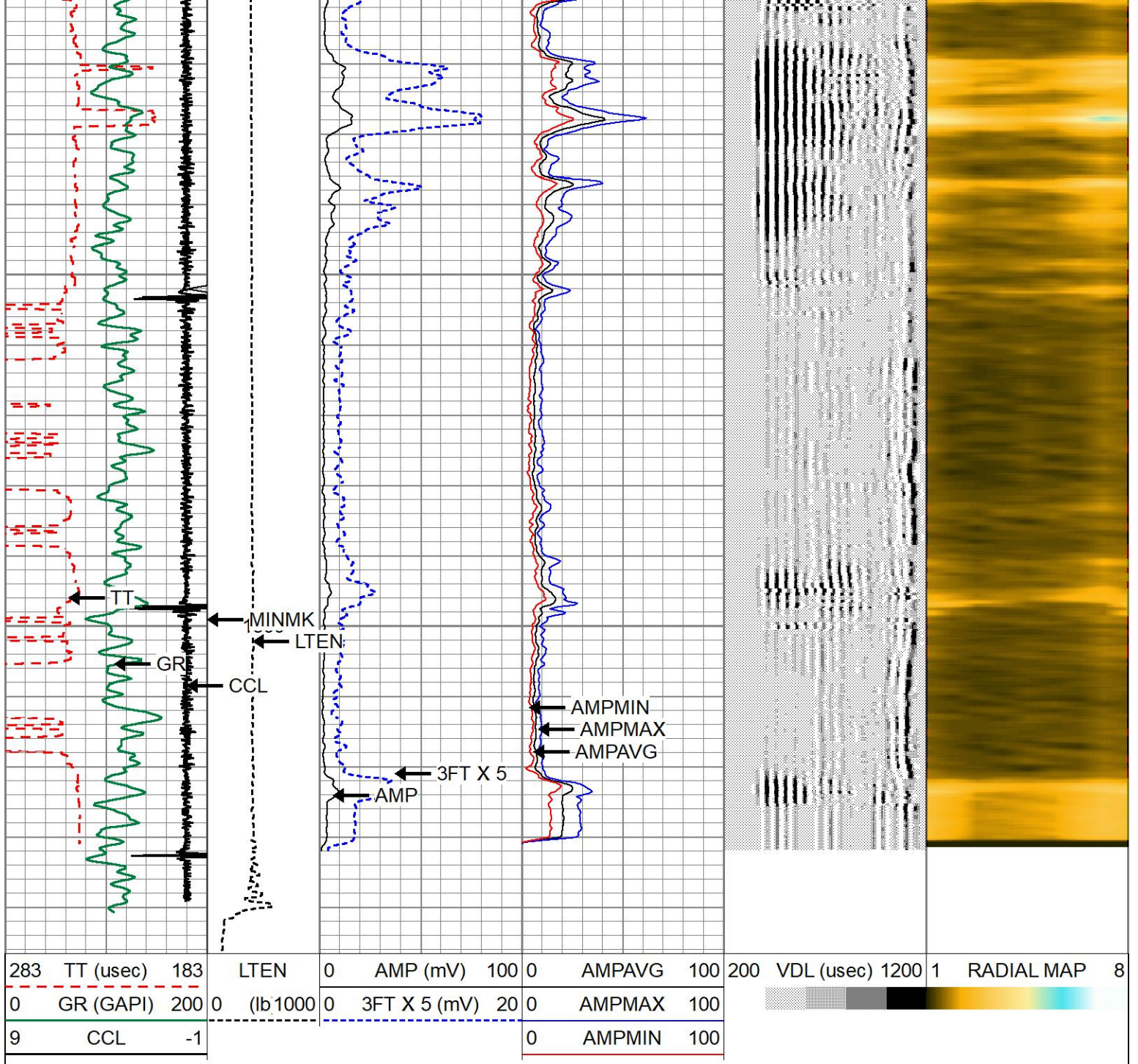


REPEAT PASS

Database File anadarko_cooley35-16_0512332279_09-22-21_scbl.db
 Dataset Pathname pass3
 Presentation Format 1patriotradii
 Dataset Creation Wed Sep 22 11:29:41 2021
 Charted by Depth in Feet scaled 1:240

283	TT (usec)	183	LTEN	0	AMP (mV)	100	0	AMPAVG	100	200	VDL (usec)	1200	1	RADIAL MAP	8
0	GR (GAPI)	200	0	(lb'1000)	0	3FT X 5 (mV)	20	0	AMPMAX	100					
9	CCL	-1						0	AMPMIN	100					





REPEAT PASS

Calibration Report

Database File anadarko_cooley35-16_0512332279_09-22-21_scbl.db
 Dataset Pathname pass4.1
 Dataset Creation Wed Sep 22 11:53:31 2021

Gamma Ray Calibration Report

Serial Number: 0111
 Tool Model: Tek-Co 2 3/4
 Performed: Thu Apr 18 09:37:49 2013

 Calibrator Value: 1.0 GAPI

Background Reading:	0.0	cps
Calibrator Reading:	1.0	cps
Sensitivity:	1.0000	GAPI/cps

Segmented Cement Bond Log Calibration Report

Serial Number:	111	
Tool Model:	275 No Temp	
Calibration Casing Diameter:	4.500	in
Calibration Depth:	473.800	ft

Master Calibration, performed (Derived):

	Raw (v)		Calibrated (mv)		Results	
	Zero	Cal	Zero	Cal	Gain	Offset
3'	-0.000	2.191	1.000	81.196	36.606	1.009
CAL	0.004	0.497				
5'	-0.002	2.477	1.000	81.196	32.353	1.071
SUM						
S1	0.000	0.739	0.000	81.196	109.913	-0.002
S2	0.000	0.652	0.000	81.196	124.558	-0.001
S3	0.000	0.602	0.000	81.196	134.976	-0.001
S4	0.000	0.609	0.000	81.196	133.262	-0.001
S5	0.000	0.570	0.000	81.196	142.511	-0.001
S6	0.000	0.617	0.000	81.196	131.584	-0.001
S7	0.000	0.701	0.000	81.196	115.784	-0.001
S8	0.000	0.747	0.000	81.196	108.743	-0.002

Internal Reference Calibration, performed (Not Performed):

	Raw (v)		Calibrated (v)		Results	
	Zero	Cal	Zero	Cal	Gain	Offset
CAL	0.000	0.000	0.004	0.497	1.000	0.000

Air Zero Calibration, performed Thu Sep 2 09:54:16 2021:

	Raw (v)		Calibrated (v)		Results	
	Zero		Zero		Offset	
3'	0.000		0.000			0.000
5'	0.000		0.000			0.000
SUM						
S1	0.000		0.000			0.000
S2	0.000		0.000			0.000
S3	0.000		0.000			0.000
S4	0.000		0.000			0.000
S5	0.000		0.000			0.000
S6	0.000		0.000			0.000
S7	0.000		0.000			0.000
S8	0.000		0.000			0.000



PATRIOT

Company	ANADARKO PETROLEUM CORP
Well	COOLEY 35-16
Field	WATTENBURG
County	WELD

