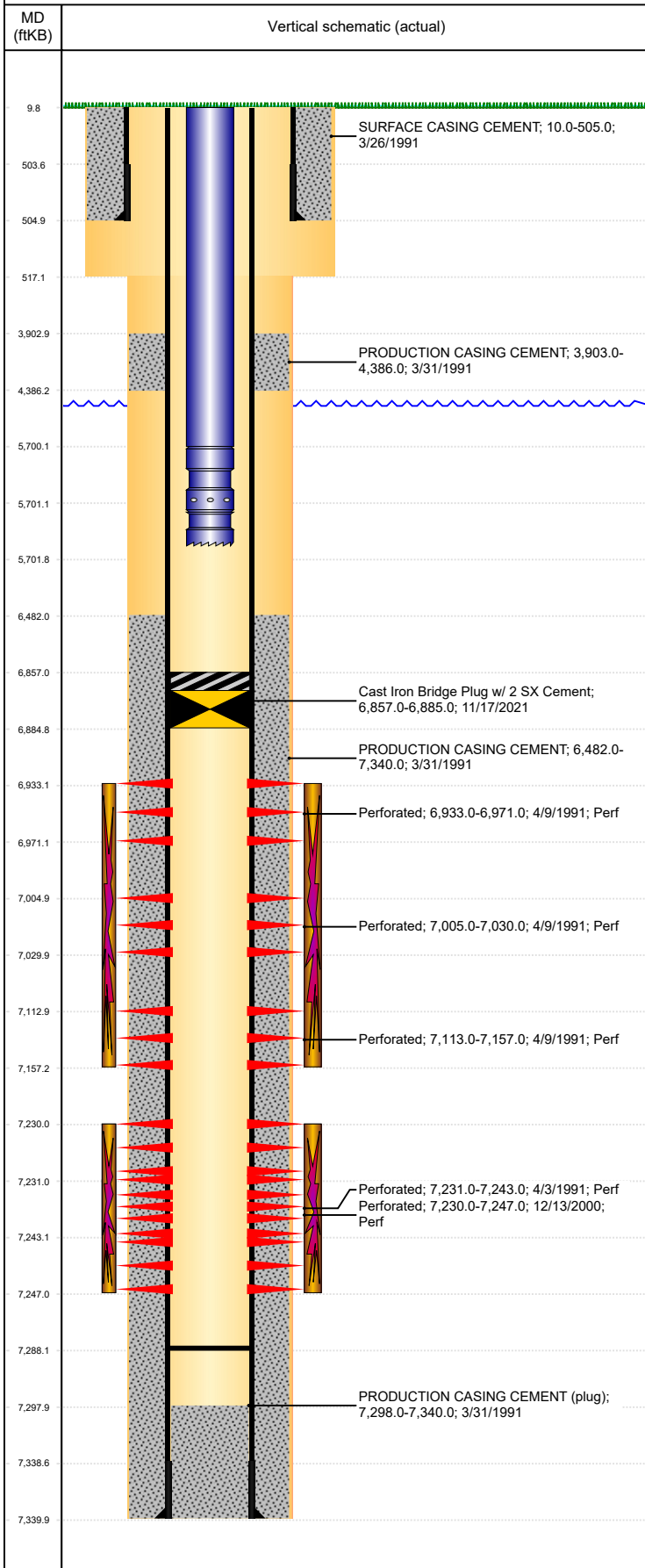


Well Name: SCHMIDT 25-02F

VERTICAL, ORIGINAL HOLE, 12/1/2021 3:56:08 PM



Well Header									
API 05-123-14942		Business Unit DJ BASIN			District 15		Well Config VERTICAL		
KB - GL / MSL (ft... 10.00		Spud Date 3/26/1991		P & A Date		Well Production Status TA			SoRT Yes
Comment									
Surface Location (Congressional)									
Qtr 3 NW	Qtr 4 NE	Section 25	Twnshp 4	Twnsh... N	Range 66	Rng E/... W	Actual Latitude (°) 40.28871667	Actual Longitude (°) -104.72314114	
Wellbore Sections									
Section Des		Size (in)			Act Top, MD (ftKB)		Act Btm, MD (ftKB)		
SURFACE		12 1/4			10		517		
PRODUCTION		7 7/8			517		7,340		
Casing Strings									
Csg Des		Run Date	OD (in)	Wt/Len (lb/ft)	Grade	Top, MD (ftKB)	MD (ftKB)		
Surface		3/26/1991	8 5/8	23.00	M-50	10.0	505.0		
Production		3/31/1991	4 1/2	11.60	M-75	10.0	7,340.0		
Cement									
Des				Start Date		Top (ftKB)		Btm (ftKB)	
SURFACE CASING CEMENT				3/26/1991		10.0		505.0	
PRODUCTION CASING CEMENT				3/31/1991		3,903.0		4,386.0	
PRODUCTION CASING CEMENT				3/31/1991		6,482.0		7,340.0	
Zone Statuses									
Zone Name	Status Date	Status	Fluid Type	Job			Prod Method		
NIOBRARA	4/16/1991	PR	Gas	DRILLING/COMPLETION - ORIGINAL, 3/26/1991...					
NIOBRARA	11/17/2021	TA	Gas						
CODELL	1/13/2007	PR	Gas	TRI-FRAC, 11/16/2006 00:00					
CODELL	11/17/2021	TA	Gas						
Perforation Data									
Linked Zone	Bnch/Stg	Entered Shot Total	Top (ftKB)		Btm (ftKB)		Date		
NIOBRARA, ORIGINAL HOLE	A	8	6,933.00		6,971.00		4/9/1991		
NIOBRARA, ORIGINAL HOLE	B	12	7,005.00		7,030.00		4/9/1991		
NIOBRARA, ORIGINAL HOLE	C	8	7,113.00		7,157.00		4/9/1991		
CODELL, ORIGINAL HOLE		68	7,230.00		7,247.00		12/13/2000		
CODELL, ORIGINAL HOLE		48	7,231.00		7,243.00		4/3/1991		
Stimulation Intervals									
Zone			Start Date		Top (ftKB)		Btm (ftKB)		
NIOBRARA, ORIGINAL HOLE			4/10/1991		6,933.0		7,157.0		
CODELL, ORIGINAL HOLE			12/14/2000		7,230.0		7,247.0		
CODELL, ORIGINAL HOLE			12/6/2006		7,230.0		7,247.0		
CODELL, ORIGINAL HOLE			4/4/1991		7,231.0		7,243.0		
Other In Hole									
Run Date	Des			Make	OD (in)	Top (ftKB)	Btm (ftKB)		
11/17/2021	Cast Iron Bridge Plug w/ 2 SX Cement				3.99	6,857.0	6,885.0		
Logs									
Date	Type				Top, MD (ftKB)		Btm, MD (ftKB)		
3/31/1991	COMPENSATED DENSITY				3,650.0		7,337.0		
3/31/1991	INDUCTION				505.0		7,338.0		
3/31/1991	SPECTRALOG				6,600.0		7,337.0		
4/3/1991	CEMENT BOND				3,800.0		7,232.0		
1/4/2013	GYRO				12.0		7,200.0		
Plug Back Total Depths									
Date	Type		Com					Depth (ftKB)	
11/20/2006	FILL		CO TO 7297					7,238.0	
12/1/2014	FILL		DID NOT CLEAN OUT					7,288.0	