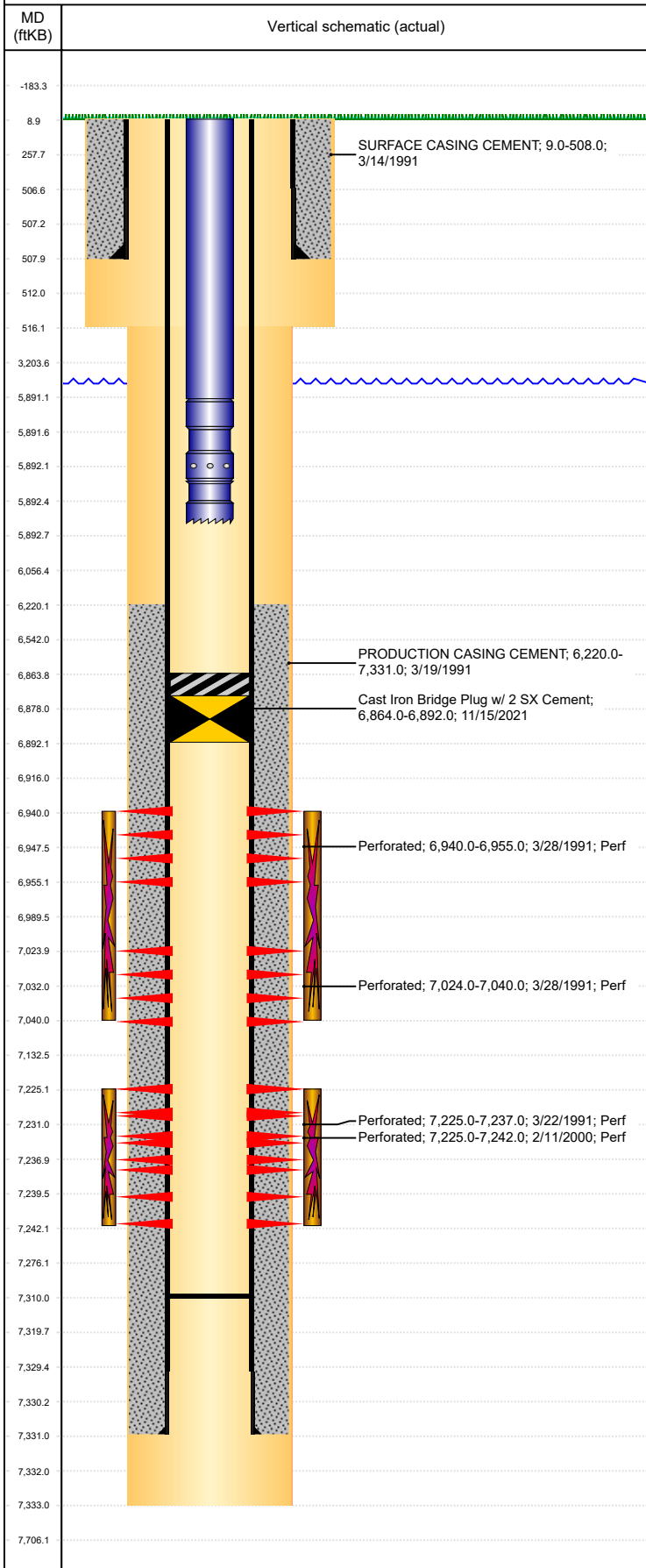


**Well Name: SCHMIDT 25-07F**

VERTICAL, ORIGINAL HOLE, 12/1/2021 3:59:22 PM



Well Header									
API 05-123-14943		Business Unit DJ BASIN			District 15		Well Config VERTICAL		
KB - GL / MSL (ft... 9.00		Spud Date 3/14/1991		P & A Date		Well Production Status TA			SoRT Yes
Comment DISCREPANCY: SURFACE CSG SET DEPTH- ST 510', DRL RPTS 508', USED 508'.									
Surface Location (Congressional)									
Qtr 3 SW	Qtr 4 NE	Section 25	Twنش... 4	Twنش... N	Range 66	Rng E/... W	Actual Latitude (°) 40.28527047	Actual Longitude (°) -104.72295910	
Wellbore Sections									
Section Des			Size (in)			Act Top, MD (ftKB)		Act Btm, MD (ftKB)	
SURFACE			12 1/4			9		516	
PRODUCTION			7 7/8			516		7,333	
Casing Strings									
Csg Des		Run Date		OD (in)	Wt/Len (lb/ft)	Grade	Top, MD (ftKB)	MD (ftKB)	
Surface		3/14/1991		8 5/8	23.00	M-50	9.0	508.0	
Production		3/18/1991		4 1/2	11.60	M-75	9.0	7,331.0	
Cement									
Des					Start Date		Top (ftKB)		Btm (ftKB)
SURFACE CASING CEMENT					3/14/1991		9.0		508.0
PRODUCTION CASING CEMENT					3/19/1991		6,220.0		7,331.0
Zone Statuses									
Zone Name		Status Date	Status	Fluid Type	Job			Prod Method	
CODELL		12/21/2005	PR		TRI-FRAC, 11/2/2005 00:00				
CODELL		11/15/2021	TA						
NIOBRARA		4/10/1991	PR		DRILLING/COMPLETION - ORIGINAL, 3/14/1991...				
NIOBRARA		11/15/2021	TA						
Perforation Data									
Linked Zone			Bnch/Stg	Entered Shot Total	Top (ftKB)		Btm (ftKB)		Date
NIOBRARA, ORIGINAL HOLE				10	6,940.00		6,955.00		3/28/1991
NIOBRARA, ORIGINAL HOLE				11	7,024.00		7,040.00		3/28/1991
CODELL, ORIGINAL HOLE				68	7,225.00		7,242.00		2/11/2000
CODELL, ORIGINAL HOLE				48	7,225.00		7,237.00		3/22/1991
Stimulation Intervals									
Zone				Start Date		Top (ftKB)		Btm (ftKB)	
NIOBRARA, ORIGINAL HOLE				3/29/1991		6,940.0		7,040.0	
CODELL, ORIGINAL HOLE				3/23/1991		7,225.0		7,237.0	
CODELL, ORIGINAL HOLE				2/18/2000		7,225.0		7,242.0	
CODELL, ORIGINAL HOLE				11/10/2005		7,225.0		7,242.0	
Other In Hole									
Run Date		Des			Make		OD (in)	Top (ftKB)	Btm (ftKB)
11/15/2021		Cast Iron Bridge Plug w/ 2 SX Cement					3.99	6,864.0	6,892.0
Logs									
Date		Type				Top, MD (ftKB)		Btm, MD (ftKB)	
3/18/1991		COMPENSATED DENSITY				3,700.0		7,331.0	
3/18/1991		INDUCTION				499.0		7,331.0	
3/22/1991		CEMENT BOND				3,700.0		7,261.0	
1/10/2014		GYRO				0.0		7,150.0	
Plug Back Total Depths									
Date		Type		Com				Depth (ftKB)	
11/17/2005		FILL		CLEAN OUT TO LAND TUBING				7,287.0	
4/8/2014		FILL						7,310.0	