

TEP
KP 43-8
Location # 412676



Dec 6, 2021 at 4:05:17 PM
+39.541767,-107.573302 ±64.53m
COGCC

location



Dec 6, 2021 at 4:05:22 PM
+39.541767,-107.573302 ±64.53m
COGCC

location

TEP
KP 43-8
Location # 412676



location



location

TEP
KP 43-8
Location # 412676



location

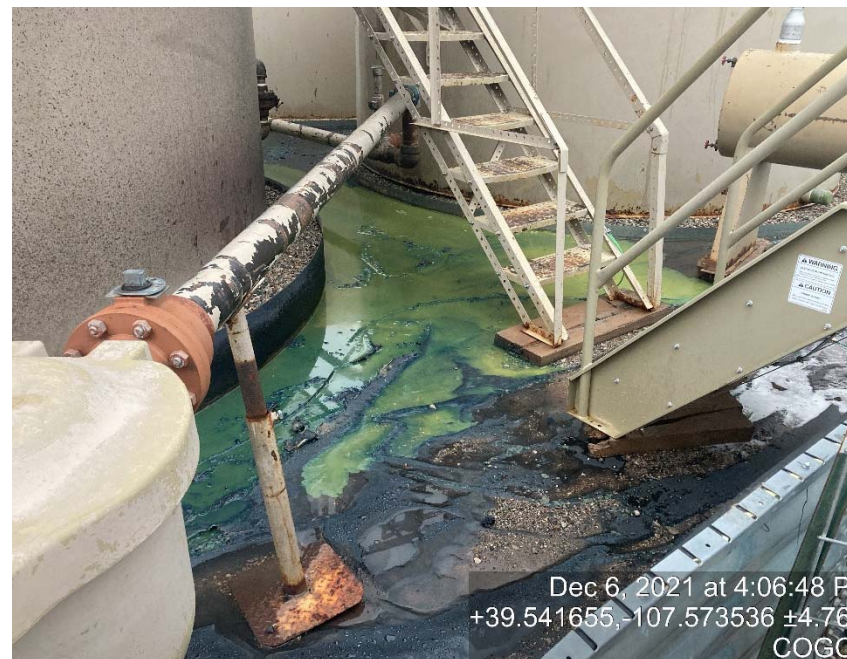


location

TEP
KP 43-8
Location # 412676



location



location

TEP
KP 43-8
Location # 412676



location



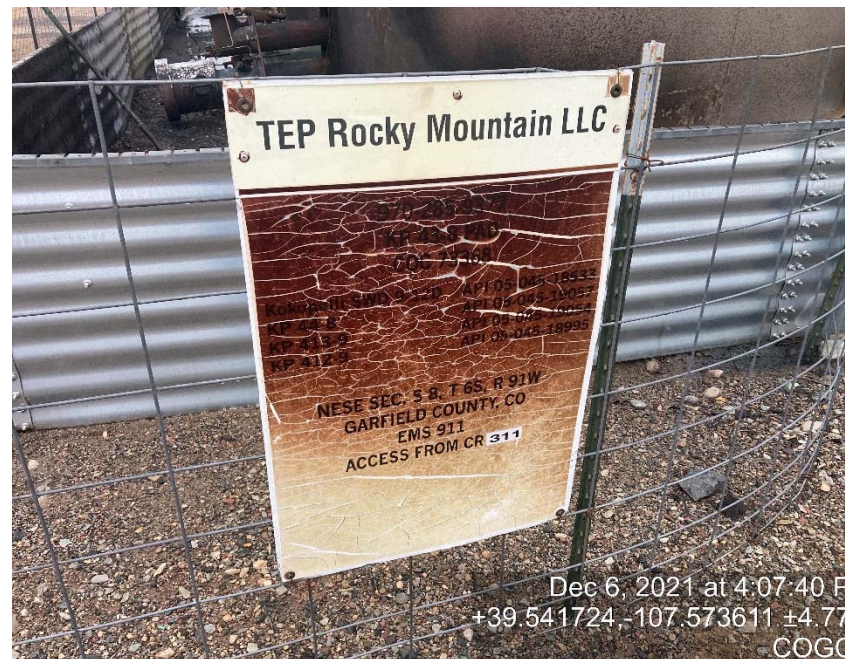
location

TEP
KP 43-8
Location # 412676



Dec 6, 2021 at 4:07:24 PM
+39.541724, -107.573611 ±4.77m
COGCC

location



Dec 6, 2021 at 4:07:40 PM
+39.541724, -107.573611 ±4.77m
COGCC

location

TEP
KP 43-8
Location # 412676



location



location



TEP
KP 43-8
Location # 412676

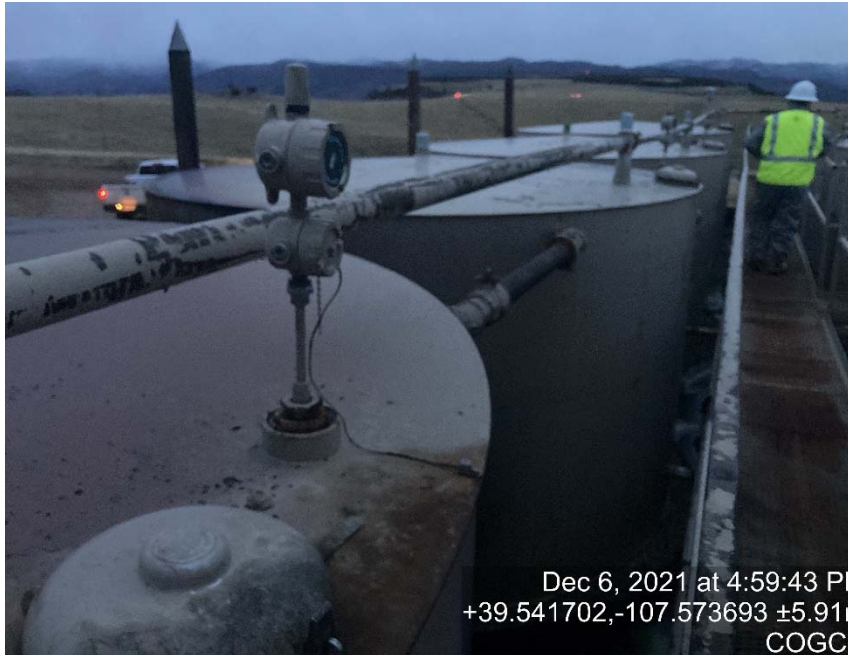


location



Vent line has no isolation valves

TEP
KP 43-8
Location # 412676



Vent line has no isolation valves



Vent line has no isolation valves

TEP
KP 43-8
Location # 412676



Vent line has no isolation valves



Crossover from adjacent tank that caught fire