



Verdad Resources LLC

Schlumberger

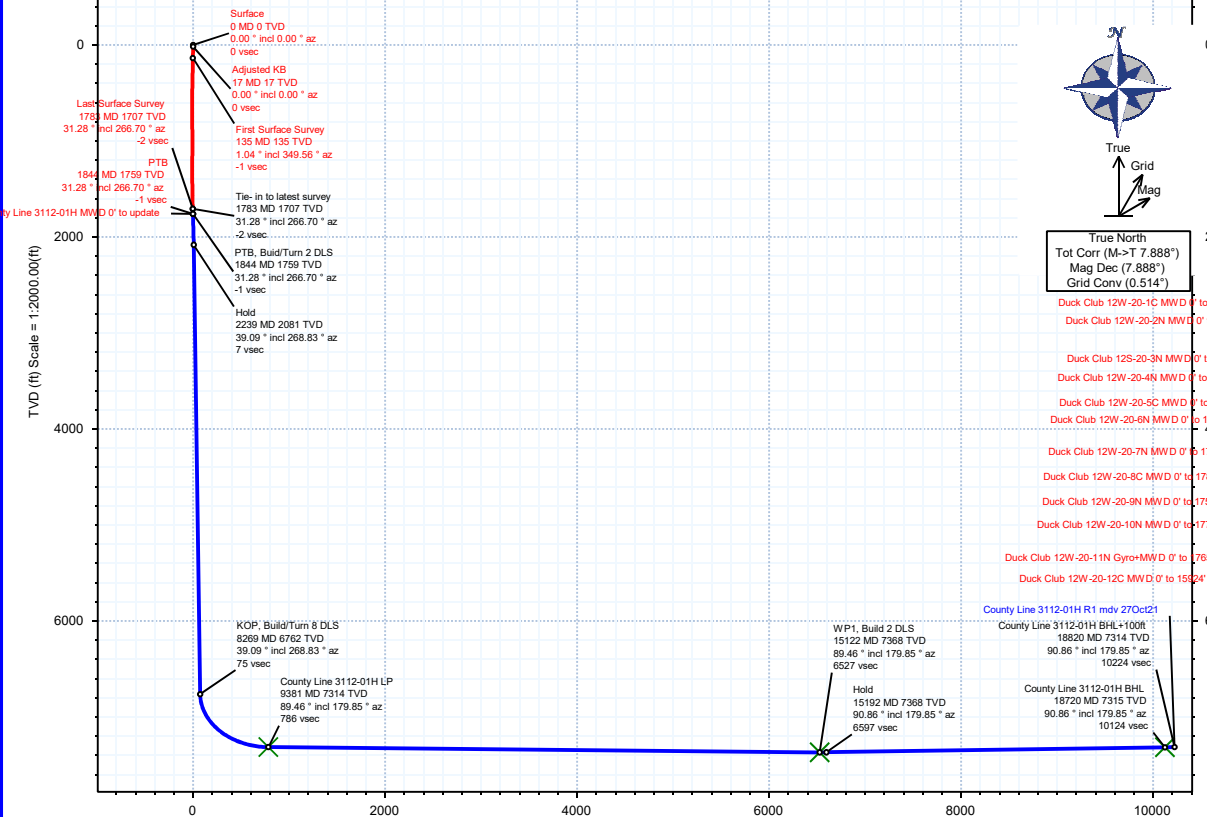
Rev 1

Borehole:	Well:	Field:	Structure:
Original Hole	County Line 3112-01H	CO, Weld County (NAD 83 NZ) - 2019	Verdad Resources 31-01N-65W (County Line Pad)

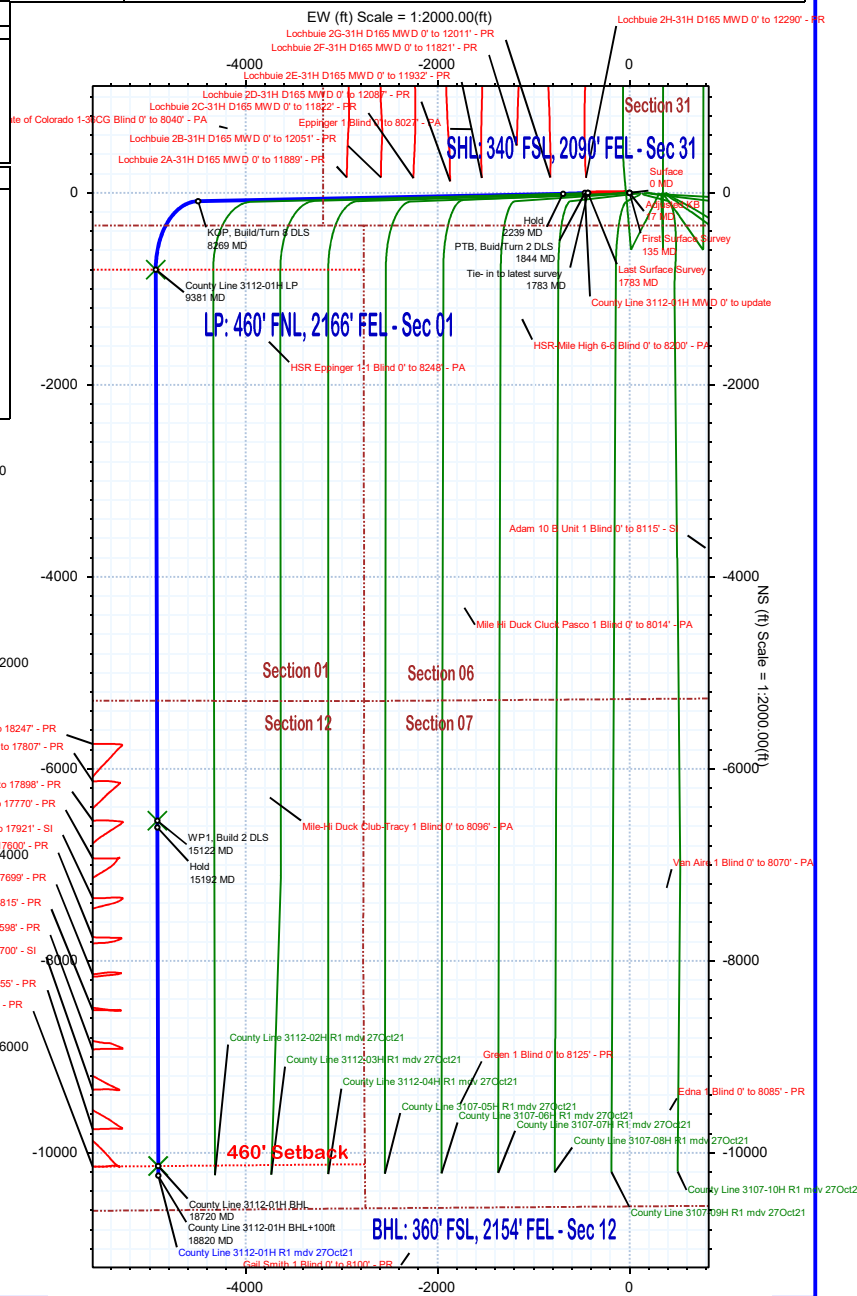
Gravity & Magnetic Parameters	Surface Location	NAD83 Colorado State Plane, Northern Zone, US Feet	Miscellaneous
Model: HDGM 2021 Dip: 66.238° Date: 27-Oct-2021	Lat: N 40 0 5.24 Northing: 1244376.31ftUS Grid Conv: 0.5138°	Lon: W 104 42 17.05 Easting: 3222788.38ftUS Scale Fact: 0.99996626	Slot: County Line 3112-01H TVD Ref: KB 21ft(5058ft above MSL)
MagDec: 7.888° FS: 51647.397nT Gravity FS: 998.982mgn (9.80665 Based)			Plan: County Line 3112-01H R1 mdv 27Oct21

Target Description	Latitude	Longitude	Northing	Eastng	TVD	VSec	N(+)S(-)	E(+)W(-)
County Line Pad - Sec 31-30 - CL	N 40 0 5.24	W 104 42 16.28	1244376.89	3222848.38	5058.00	0.12	0.04	60.01
County Line Pad - Sec 01-12 - CL	N 40 0 5.24	W 104 42 17.05	1244376.31	3222788.38	5058.00	0.00	0.00	0.00
County Line Pad - Sec 01-12	N 40 0 5.24	W 104 42 17.05	1244376.31	3222788.38	5058.00	0.00	0.00	0.00
County Line Pad - Sec 01-12 - 460' SB	N 40 0 5.24	W 104 42 17.05	1244376.31	3222788.38	5058.00	0.00	0.00	0.00
County Line Pad - Sec 06-07 - CL	N 40 0 5.24	W 104 42 16.28	1244376.89	3222848.38	5058.00	0.12	0.04	60.01
County Line Pad - Sec 31-30-06-07	N 40 0 5.24	W 104 42 16.28	1244376.89	3222848.38	5058.00	0.12	0.04	60.01
County Line 3112-01H LP	N 39 59 57.35	W 104 43 20.46	1243533.47	3217961.12	7314.00	785.72	-798.65	-4934.80
County Line 3112-01H BHL	N 39 58 25.06	W 104 43 20.11	1234195.73	3217969.91	7315.00	10124.43	-10137.32	-4909.75
County Line 3112-01H WP1	N 39 59 0.61	W 104 43 20.25	1237793.04	3217928.00	7368.00	6526.75	-6539.65	-4919.40

Critical Point	MD	INCL	AZIM	TVD	VSEC	N(+)S(-)	E(+)W(-)	DLS
Tie-in to latest survey	1783.00	31.28	266.70	1706.51	-2.25	1.12	-433.47	0.00
PTB, Build/Turn 2 DLS	1844.00	31.28	266.70	1758.64	-0.51	-0.71	-465.09	0.00
Hold	2239.12	39.09	268.83	2081.34	7.35	-9.16	-692.40	2.00
KOP, Build/Turn 8 DLS	8268.99	39.09	268.83	6761.64	74.78	-86.55	-4493.46	0.00
County Line 3112-01H LP	9380.78	89.46	179.85	7314.00	785.72	-798.65	-4934.80	8.00
WP1, Build 2 DLS	15122.06	89.46	179.85	7368.00	6526.75	-6539.65	-4919.40	0.00
Hold	15191.89	90.86	179.85	7367.81	6596.57	-6609.47	-4919.21	2.00
County Line 3112-01H BHL	18720.14	90.86	179.85	7315.00	10124.43	-10137.32	-4909.75	0.00
County Line 3112-01H BHL+100ft	18820.14	90.86	179.85	7313.50	10224.42	-10237.30	-4909.48	0.00



Vertical Section (ft) Azim = 179.85° Scale = 1:2000.00(ft) Origin = 0N/-S, 0E/-W



County Line 3112-01H R1 mdv 27Oct21 Proposal Geodetic Report



(Def Plan)

Report Date: November 19, 2021 - 07:08 AM
Client: Verdax Resources LLC
Field: CO, Weld County (NAD 83 NZ) - 2019
Structure / Slot: Verdax Resources 31-01N-65W (County Line Pad) / County Line 3112-01H
Well: County Line 3112-01H
Borehole: Original Hole
UWI / API#: Unknown / 05-123-51171
Survey Name: County Line 3112-01H R1 mdv 27Oct21
Survey Date: November 19, 2021
Tort / AHD / DDI / ERD Ratio: 133.886 ° / 14853.575 ft / 6.706 / 2.016
Coordinate Reference System: NAD83 Colorado State Plane, Northern Zone, US Feet
Location Lat / Long: N 40° 0' 5.24232", W 104° 42' 17.04888"
Location Grid N/E Y/X: N 1244376.311 fUS, E 3222788.377 fUS
CRS Grid Convergence Angle: 0.5138 °
Grid Scale Factor: 0.99996626
Version / Patch: 2.10.824.0

Survey / DLS Computation: Minimum Curvature / Lubinski
Vertical Section Azimuth: 179.850 ° (True North)
Vertical Section Origin: 0.000 ft, 0.000 ft
TVD Reference Datum: KB 21ft
TVD Reference Elevation: 5058.000 ft above MSL
Seabed / Ground Elevation: 5037.000 ft above MSL
Magnetic Declination: 7.883 °
Total Gravity Field Strength: 998.9823mgn (9.80665 Based)
Gravity Model: GARM
Total Magnetic Field Strength: 51641.032 nT
Magnetic Dip Angle: 66.236 °
Declination Date: November 19, 2021
Magnetic Declination Model: HDGM 2021
North Reference: True North
Grid Convergence Used: 0.0000 °
Total Corr Mag North->True North: 7.8826 °
Local Coord Referenced To: Well Head

Comments	MD (ft)	Incl (°)	Azim True (°)	TVD (ft)	TVDSS (ft)	VSEC (ft)	NS (ft)	EW (ft)	DLS (°/100ft)	Northing (ftUS)	Easting (ftUS)	Latitude (°)	Longitude (°)
Surface	0.00	0.00	0.00	0.00	-5058.00	0.00	0.00	0.00	N/A	1244376.31	3222788.38	40.001456	-104.704736
Adjusted KB	17.00	0.00	0.00	17.00	-5041.00	0.00	0.00	0.00	0.00	1244376.31	3222788.38	40.001456	-104.704736
First Surface Survey	135.00	1.04	349.56	134.99	-4923.01	-1.05	1.05	-0.19	0.88	1244377.36	3222788.17	40.001459	-104.704736
	164.00	0.86	1.75	163.99	-4894.01	-1.53	1.53	-0.24	0.93	1244377.84	3222788.13	40.001460	-104.704737
	192.00	1.10	347.22	191.99	-4866.01	-2.00	2.00	-0.29	1.23	1244378.31	3222788.07	40.001462	-104.704737
	222.00	1.26	315.62	221.98	-4836.02	-2.52	2.52	-0.58	2.20	1244378.82	3222787.77	40.001463	-104.704738
	252.00	1.95	300.50	251.97	-4806.03	-3.02	3.01	-1.25	2.68	1244379.31	3222787.10	40.001464	-104.704740
	283.00	2.94	292.73	282.94	-4775.06	-3.59	3.59	-2.44	3.36	1244379.88	3222785.90	40.001466	-104.704745
	311.00	4.08	284.38	310.89	-4747.11	-4.12	4.11	-4.07	4.45	1244380.39	3222784.27	40.001467	-104.704750
	343.00	5.33	281.11	342.78	-4715.22	-4.70	4.68	-6.63	3.99	1244380.93	3222781.71	40.001469	-104.704759
	373.00	6.26	279.86	372.62	-4685.38	-5.26	5.23	-9.61	3.13	1244381.45	3222778.72	40.001471	-104.704770
	403.00	7.47	280.25	402.41	-4655.59	-5.89	5.86	-13.14	4.04	1244382.05	3222775.19	40.001472	-104.704783
	433.00	8.61	279.19	432.11	-4625.89	-6.61	6.56	-17.27	3.83	1244382.72	3222771.05	40.001474	-104.704797
	463.00	9.55	277.14	461.74	-4596.26	-7.29	7.23	-21.96	3.31	1244383.34	3222766.35	40.001476	-104.704814
	493.00	10.38	275.34	491.28	-4566.72	-7.86	7.79	-27.12	2.95	1244383.86	3222761.19	40.001478	-104.704833
	523.00	10.69	273.73	520.78	-4537.22	-8.31	8.22	-32.59	1.42	1244384.24	3222755.72	40.001479	-104.704852
	553.00	10.93	273.30	550.25	-4507.75	-8.67	8.57	-38.20	0.84	1244384.54	3222750.10	40.001480	-104.704872
	583.00	11.01	272.23	579.70	-4478.30	-8.96	8.84	-43.91	0.73	1244384.76	3222744.39	40.001480	-104.704893
	613.00	11.29	269.05	609.13	-4448.87	-9.04	8.91	-49.71	2.25	1244384.77	3222738.60	40.001481	-104.704913
	643.00	11.48	266.94	638.54	-4419.46	-8.84	8.70	-55.62	1.53	1244384.51	3222732.68	40.001480	-104.704934
	673.00	11.56	266.94	667.94	-4390.06	-8.54	8.38	-61.61	0.27	1244384.14	3222726.70	40.001479	-104.704956
	703.00	11.83	267.96	697.31	-4360.69	-8.29	8.11	-67.68	1.13	1244383.81	3222720.63	40.001478	-104.704977
	733.00	12.00	268.51	726.67	-4331.33	-8.11	7.92	-73.87	0.68	1244383.57	3222714.44	40.001478	-104.704999
	763.00	12.17	268.77	756.00	-4302.00	-7.98	7.77	-80.15	0.60	1244383.36	3222708.16	40.001478	-104.705022
	793.00	12.50	268.65	785.31	-4272.69	-7.85	7.63	-86.56	1.10	1244383.16	3222701.76	40.001477	-104.705045
	823.00	12.71	268.36	814.59	-4243.41	-7.70	7.45	-93.10	0.73	1244382.93	3222695.22	40.001477	-104.705068
	853.00	12.84	268.05	843.85	-4214.15	-7.51	7.25	-99.73	0.49	1244382.66	3222688.59	40.001476	-104.705092
	883.00	12.91	267.06	873.09	-4184.91	-7.24	6.96	-106.41	0.77	1244382.32	3222681.91	40.001475	-104.705116
	913.00	12.82	267.12	902.34	-4155.66	-6.92	6.62	-113.08	0.30	1244381.92	3222675.24	40.001474	-104.705139
	943.00	12.96	267.56	931.58	-4126.42	-6.63	6.31	-119.77	0.57	1244381.55	3222668.56	40.001474	-104.705163
	973.00	13.47	268.00	960.79	-4097.21	-6.38	6.05	-126.62	1.73	1244381.22	3222661.71	40.001473	-104.705188
	1003.00	13.89	269.92	989.94	-4068.06	-6.27	5.92	-133.71	2.06	1244381.03	3222654.62	40.001472	-104.705213
	1033.00	14.57	270.10	1019.02	-4038.98	-6.29	5.92	-141.09	2.27	1244380.97	3222647.25	40.001472	-104.705239
	1063.00	15.26	271.20	1048.00	-4010.00	-6.40	6.01	-148.81	2.49	1244380.99	3222639.53	40.001473	-104.705267
	1093.00	16.20	271.56	1076.88	-3981.12	-6.62	6.21	-156.94	3.15	1244381.11	3222631.39	40.001473	-104.705296
	1123.00	17.15	270.93	1105.62	-3952.38	-6.83	6.39	-165.54	3.22	1244381.22	3222622.79	40.001474	-104.705327
	1153.00	17.83	270.85	1134.23	-3923.77	-6.99	6.53	-174.56	2.27	1244381.28	3222613.77	40.001474	-104.705359
	1183.00	18.35	271.33	1162.75	-3895.25	-7.19	6.71	-183.87	1.80	1244381.37	3222604.46	40.001475	-104.705392
	1213.00	18.86	271.14	1191.18	-3866.82	-7.42	6.92	-193.44	1.71	1244381.49	3222594.89	40.001475	-104.705426
	1243.00	19.44	270.97	1219.52	-3838.48	-7.63	7.10	-203.28	1.94	1244381.58	3222585.05	40.001476	-104.705461
	1273.00	19.85	270.78	1247.77	-3810.23	-7.81	7.25	-213.37	1.38	1244381.65	3222574.96	40.001476	-104.705497
	1303.00	20.32	270.71	1275.95	-3782.05	-7.97	7.39	-223.67	1.57	1244381.69	3222564.66	40.001476	-104.705534
	1333.00	20.55	270.05	1304.06	-3753.94	-8.07	7.45	-234.14	1.09	1244381.66	3222554.19	40.001477	-104.705572
	1363.00	20.93	269.87	1332.12	-3725.88	-8.09	7.45	-244.77	1.28	1244381.56	3222543.56	40.001477	-104.705609
	1393.00	21.34	269.42	1360.10	-3697.90	-8.05	7.38	-255.58	1.47	1244381.40	3222532.75	40.001476	-104.705648
	1423.00	22.45	268.49	1387.94	-3670.06	-7.87	7.17	-266.77	3.88	1244381.09	3222521.57	40.001476	-104.705688
	1453.00	23.98	267.89	1415.51	-3642.49	-7.53	6.80	-278.59	5.16	1244380.61	3222509.75	40.001475	-104.705730
	1483.00	24.97	268.46	1442.81	-3615.19	-7.17	6.40	-291.01	3.39	1244380.10	3222497.33	40.001474	-104.705775
	1513.00	25.63	269.34	1469.93	-3588.07	-6.95	6.16	-303.83	2.53	1244379.74	3222484.52	40.001473	-104.705820
	1543.00	25.99	269.82	1496.94	-3561.06	-6.89	6.06	-316.89	1.39	1244379.53	3222471.46	40.001473	-104.705867
	1573.00	26.45	269.16	1523.85	-3534.15	-6.81	5.94	-330.14	1.82	1244379.29	3222458.21	40.001473	-104.705914
	1603.00	27.18	268.15	1550.63	-3507.37	-6.53	5.63	-343.67	2.87	1244378.85	3222444.68	40.001472	-104.705963
	1633.00	28.46	267.58	1577.16	-3480.84	-6.04	5.10	-357.66	4.36	1244378.20	3222430.70	40.001470	-104.706012
	1663.00	29.42	267.44	1603.41	-3454.59	-5.45	4.47	-372.16	3.21	1244377.44	3222416.20	40.001468	-104.706064
	1693.00	30.40	266.79	1629.42	-3428.58	-4.73	3.72	-387.10	3.44	1244376.56	3222401.27	40.001466	-104.706118
	1723.00	30.88	266.73	1655.23	-3402.77	-3.91	2.85	-402.37	1.60	1244375.55	3222386.01	40.001464	-104.706172
	1753.00	31.48	266.89	1680.89	-3377.11	-3.08	1.99	-417.88	2.02	1244374.55	3222370.52	40.001462	-104.706227
Tie- in to latest survey	1783.00	31.28	266.70	1706.51	-3351.49	-2.25	1.12	-433.47	0.74	1244373.54	3222354.93	40.001459	-104.706283
	1800.00	31.28	266.70	1721.04	-3336.96	-1.77	0.61	-442.29	0.00	1244372.95	3222346.12	40.001458	-104.706315
PTB, Build/Turn 2 DLS	1844.00	31.28	266.70	1758.64	-3299.36	-0.51	-0.71	-465.09	0.00	1244371.43	3222323.33	40.001454	-104.706396
	1900.00	32.38	267.06	1806.22	-3251.78	1.02	-2.31	-494.58	2.00	1244369.56	3222293.85	40.001450	-104.706501
	2000.00	34.36	267.64	1889.72	-3168.28	3.41	-4.85	-549.53	2.00	1244366.53	3222238.93	40.001443	-104.706697
	2100.00	36.33	268.17	1971.29	-3086.71	5.36	-6.95	-607.34	2.00	1244363.91	3222181.15	40.001437	-104.706904
	2200.00	38.31	268.66	2050.81	-3007.19	6.88	-8.63	-667.94	2.00	1244361.70	3222120.56	40.001432	-104.707120
	2239.12	39.09	268.83	2081.34	-2976.66	7.35	-9.16	-692.40	2.00	1244360.94	3222096.11	40.001431	-104.707207
	2300.00	39.09	268.83	2128.59	-2929.41	8.03	-9.94	-730.77	0.00	1244359.82	3222057.75	40.001429	-104.707349
	2400.00	39.09	268.83	2206.21	-2851.79	9.15	-11.23	-793.81	0.00	1244357.97	3221994.73	40.001425	-104.707569
	2500.00	39.09	268.83	2283.83	-2774.17	10.27	-12.51	-856.85	0.00	1244356.12	3221931.71	40.001422	-104.707794
	2600.00	39.09	268.83	2361.45	-2696.55	11.38	-13.79	-919.89	0.00	1244354.27	3221868.68	40.001418	-104.708019
	2700.00	39.09	268.83	2439.079									

Comments	MD (ft)	Incl (°)	Azim True (°)	TVD (ft)	TVDSS (ft)	VSEC (ft)	NS (ft)	EW (ft)	DLS (°/100ft)	Northing (ftUS)	Easting (ftUS)	Latitude (°)	Longitude (°)
	4200.00	39.09	268.83	3603.35	-1454.65	29.28	-34.33	-1928.48	0.00	124324.69	3220860.35	40.001362	-104.711619
	4300.00	39.09	268.83	3680.96	-1377.04	30.40	-35.61	-1991.52	0.00	124322.84	3220797.33	40.001358	-104.711844
	4400.00	39.09	268.83	3758.58	-1299.42	31.51	-36.89	-2054.56	0.00	124320.99	3220734.31	40.001355	-104.712069
	4500.00	39.09	268.83	3836.20	-1221.80	32.63	-38.18	-2117.59	0.00	124319.15	3220671.29	40.001351	-104.712294
	4600.00	39.09	268.83	3913.82	-1144.18	33.75	-39.46	-2180.63	0.00	124317.30	3220608.27	40.001348	-104.712519
	4700.00	39.09	268.83	3991.44	-1066.56	34.87	-40.74	-2243.67	0.00	124315.45	3220545.24	40.001344	-104.712744
	4800.00	39.09	268.83	4069.06	-988.94	35.99	-42.03	-2306.71	0.00	124313.60	3220482.22	40.001341	-104.712969
	4900.00	39.09	268.83	4146.68	-911.32	37.11	-43.31	-2369.74	0.00	124311.75	3220419.20	40.001337	-104.713194
	5000.00	39.09	268.83	4224.29	-833.71	38.22	-44.59	-2432.78	0.00	124309.90	3220356.18	40.001333	-104.713419
	5100.00	39.09	268.83	4301.91	-756.09	39.34	-45.88	-2495.82	0.00	124308.05	3220293.16	40.001330	-104.713644
	5200.00	39.09	268.83	4379.53	-678.47	40.46	-47.16	-2558.85	0.00	124306.21	3220230.14	40.001326	-104.713869
	5300.00	39.09	268.83	4457.15	-600.85	41.58	-48.44	-2621.89	0.00	124304.36	3220167.12	40.001323	-104.714094
	5400.00	39.09	268.83	4534.77	-523.23	42.70	-49.73	-2684.93	0.00	124302.51	3220104.10	40.001319	-104.714319
	5500.00	39.09	268.83	4612.39	-445.61	43.82	-51.01	-2747.97	0.00	124300.66	3220041.08	40.001316	-104.714544
	5600.00	39.09	268.83	4690.01	-367.99	44.94	-52.29	-2811.00	0.00	124298.81	3219978.06	40.001312	-104.714769
	5700.00	39.09	268.83	4767.63	-290.37	46.05	-53.58	-2874.04	0.00	124296.96	3219915.03	40.001309	-104.714994
	5800.00	39.09	268.83	4845.24	-212.76	47.17	-54.86	-2937.08	0.00	124295.11	3219852.01	40.001305	-104.715219
	5900.00	39.09	268.83	4922.86	-135.14	48.29	-56.14	-3000.12	0.00	124293.27	3219788.99	40.001302	-104.715444
	6000.00	39.09	268.83	5000.48	-57.52	49.41	-57.43	-3063.15	0.00	124291.42	3219725.97	40.001298	-104.715669
	6100.00	39.09	268.83	5078.10	20.10	50.53	-58.71	-3126.19	0.00	124289.57	3219662.95	40.001294	-104.715894
	6200.00	39.09	268.83	5155.72	97.72	51.65	-59.99	-3189.23	0.00	124287.72	3219599.93	40.001291	-104.716119
	6300.00	39.09	268.83	5233.34	175.34	52.76	-61.28	-3252.26	0.00	124285.87	3219536.91	40.001287	-104.716344
	6400.00	39.09	268.83	5310.96	252.96	53.88	-62.56	-3315.30	0.00	124284.02	3219473.89	40.001284	-104.716569
	6500.00	39.09	268.83	5388.57	330.57	55.00	-63.84	-3378.34	0.00	124282.17	3219410.87	40.001280	-104.716794
	6600.00	39.09	268.83	5466.19	408.19	56.12	-65.13	-3441.38	0.00	124280.33	3219347.85	40.001277	-104.717019
	6700.00	39.09	268.83	5543.81	485.81	57.24	-66.41	-3504.41	0.00	124278.48	3219284.83	40.001273	-104.717244
	6800.00	39.09	268.83	5621.43	563.43	58.36	-67.70	-3567.45	0.00	124276.63	3219221.80	40.001270	-104.717469
	6900.00	39.09	268.83	5699.05	641.05	59.47	-68.98	-3630.49	0.00	124274.78	3219158.78	40.001266	-104.717694
	7000.00	39.09	268.83	5776.67	718.67	60.59	-70.26	-3693.53	0.00	124272.93	3219095.76	40.001263	-104.717920
	7100.00	39.09	268.83	5854.29	796.29	61.71	-71.55	-3756.56	0.00	124271.08	3219032.74	40.001259	-104.718145
	7200.00	39.09	268.83	5931.91	873.91	62.83	-72.83	-3819.60	0.00	124269.23	3218969.72	40.001255	-104.718370
	7300.00	39.09	268.83	6009.52	951.52	63.95	-74.11	-3882.64	0.00	124267.39	3218906.70	40.001252	-104.718595
	7400.00	39.09	268.83	6087.14	1029.14	65.07	-75.40	-3945.67	0.00	124265.54	3218843.68	40.001248	-104.718820
	7500.00	39.09	268.83	6164.76	1106.76	66.18	-76.68	-4008.71	0.00	124263.69	3218780.66	40.001245	-104.719045
	7600.00	39.09	268.83	6242.38	1184.38	67.30	-77.96	-4071.75	0.00	124261.84	3218717.64	40.001241	-104.719270
	7700.00	39.09	268.83	6320.00	1262.00	68.42	-79.25	-4134.79	0.00	124259.99	3218654.62	40.001238	-104.719495
	7800.00	39.09	268.83	6397.62	1339.62	69.54	-80.53	-4197.82	0.00	124258.14	3218591.59	40.001234	-104.719720
	7900.00	39.09	268.83	6475.24	1417.24	70.66	-81.81	-4260.86	0.00	124256.29	3218528.57	40.001231	-104.719945
	8000.00	39.09	268.83	6552.85	1494.85	71.78	-83.10	-4323.90	0.00	124254.44	3218465.55	40.001227	-104.720170
	8100.00	39.09	268.83	6630.47	1572.47	72.89	-84.38	-4386.94	0.00	124252.59	3218402.53	40.001224	-104.720395
	8200.00	39.09	268.83	6708.09	1650.09	74.01	-85.66	-4449.97	0.00	124250.75	3218339.51	40.001220	-104.720620
KOP, Build/Turn 8 DLS	8268.99	39.09	268.83	6761.64	1703.64	74.78	-86.55	-4493.46	0.00	1244249.47	3218296.03	40.001218	-104.720775
	8300.00	39.17	264.90	6785.70	1727.70	75.80	-87.62	-4512.99	8.00	1244248.23	3218276.51	40.001215	-104.720845
	8400.00	40.33	252.51	6862.70	1804.70	88.19	-100.17	-4575.42	8.00	1244235.12	3218214.21	40.001180	-104.721067
	8500.00	42.73	240.98	6937.67	1879.67	114.25	-126.39	-4636.04	8.00	1244208.35	3218153.82	40.001108	-104.721289
	8600.00	46.17	230.66	7009.15	1951.15	153.49	-165.78	-4696.70	8.00	1244168.45	3218096.52	40.001000	-104.721484
	8700.00	50.43	221.58	7075.74	2017.74	205.13	-217.56	-4747.25	8.00	1244116.19	3218043.44	40.000858	-104.721681
	8800.00	55.31	213.62	7136.14	2078.14	268.17	-280.73	-4795.67	8.00	1244052.59	3217995.59	40.000684	-104.721853
	8900.00	60.65	206.59	7189.19	2131.19	341.39	-354.06	-4838.01	8.00	1243978.89	3217953.91	40.000483	-104.722004
	9000.00	66.32	200.27	7233.85	2175.85	423.36	-436.12	-4873.44	8.00	1243896.52	3217919.22	40.000258	-104.722131
	9100.00	72.23	194.50	7269.25	2211.25	512.48	-525.32	-4901.27	8.00	1243807.08	3217892.19	40.000013	-104.722230
	9200.00	78.29	189.10	7294.70	2236.70	607.03	-619.91	-4920.97	8.00	1243712.32	3217873.34	39.999753	-104.722300
	9300.00	84.45	183.94	7309.71	2251.71	705.15	-718.06	-4932.15	8.00	1243614.07	3217863.05	39.999484	-104.722340
County Line 3112-01H LP	9380.78	89.46	179.85	7314.00	2256.00	785.72	-798.65	-4934.80	8.00	1243533.47	3217861.12	39.999263	-104.722350
	9400.00	89.46	179.85	7314.18	2256.18	804.94	-817.86	-4934.75	0.00	1243514.26	3217861.34	39.999210	-104.722349
	9500.00	89.46	179.85	7315.12	2257.12	904.93	-917.86	-4934.48	0.00	1243414.27	3217862.50	39.998935	-104.722348
	9600.00	89.46	179.85	7316.06	2258.06	1004.93	-1017.85	-4934.21	0.00	1243314.29	3217863.67	39.998661	-104.722347
	9700.00	89.46	179.85	7317.00	2259.00	1104.93	-1117.85	-4933.94	0.00	1243214.30	3217864.83	39.998386	-104.722346
	9800.00	89.46	179.85	7317.94	2259.94	1204.92	-1217.84	-4933.67	0.00	1243114.32	3217866.00	39.998112	-104.722345
	9900.00	89.46	179.85	7318.88	2260.88	1304.92	-1317.84	-4933.41	0.00	1243014.33	3217867.16	39.997837	-104.722344
	10000.00	89.46	179.85	7319.82	2261.82	1404.91	-1417.83	-4933.14	0.00	1242914.35	3217868.33	39.997563	-104.722343
	10100.00	89.46	179.85	7320.76	2262.76	1504.91	-1517.83	-4932.87	0.00	1242814.36	3217869.49	39.997288	-104.722342
	10200.00	89.46	179.85	7321.71	2263.71	1604.90	-1617.82	-4932.60	0.00	1242714.38	3217870.66	39.997014	-104.722341
	10300.00	89.46	179.85	7322.65	2264.65	1704.90	-1717.82	-4932.33	0.00	1242614.39	3217871.82	39.996739	-104.722340
	10400.00	89.46	179.85	7323.59	2265.59	1804.89	-1817.81	-4932.07	0.00	1242514.41	3217872.99	39.996465	-104.722339
	10500.00	89.46	179.85	7324.53	2266.53	1904.89	-1917.81	-4931.80	0.00	1242414.42	3217874.15	39.996190	-104.722338
	10600.00	89.46	179.85	7325.47	2267.47	2004.89	-2017.80	-4931.53	0.00	1242314.43	3217875.32	39.995916	-104.722337
	10700.00	89.46	179.85	7326.41	2268.41	2104.88	-2117.80	-4931.26	0.00	1242214.45	3217876.48	39.995641	-104.722336
	10800.00	89.46	179.85	7327.35	2269.35	2204.88	-2217.79	-4930.99	0.00	1242114.46	3217877.65	39.995367	-104.722335
	10900.00	89.46	179.85	7328.29	2270.29	2304.87	-2317.79	-4930.72	0.00	1242014.48	3217878.81	39.995092	-104.722334
	11000.00	89.46	179.85	7329.23	2271.23	2404.87	-2417.78	-4930.46	0.00	1241914.49	3217879.98	39.994818	-104.722333
	11100.00	89.46	179.85	7330.17	2272.17	2504.86	-2517.78	-4930.19	0.00	1241814.51	3217881.14	39.994543	-104.722332
	11200.00	89.46	179.85	7331.11	2273.11	2604.86	-2617.77	-4929.92	0.00	1241714.52	3217882.31	39.994269	-104.722331
	11300.00	89.4											

Comments	MD (ft)	Incl (°)	Azim True (°)	TVD (ft)	TVDSS (ft)	VSEC (ft)	NS (ft)	EW (ft)	DLS (°/100ft)	Northing (ftUS)	Easting (ftUS)	Latitude (°)	Longitude (°)
	15300.00	90.86	179.85	7366.19	2308.19	6704.67	-6717.57	-4918.92	0.00	1237615.14	3217930.07	39.983015	-104.722289
	15400.00	90.86	179.85	7364.69	2306.69	6804.66	-6817.56	-4918.65	0.00	1237515.16	3217931.24	39.982740	-104.722288
	15500.00	90.86	179.85	7363.19	2305.19	6904.65	-6917.55	-4918.39	0.00	1237415.18	3217932.40	39.982466	-104.722287
	15600.00	90.86	179.85	7361.70	2303.70	7004.64	-7017.54	-4918.12	0.00	1237315.20	3217933.57	39.982191	-104.722286
	15700.00	90.86	179.85	7360.20	2302.20	7104.63	-7117.53	-4917.85	0.00	1237215.22	3217934.73	39.981917	-104.722285
	15800.00	90.86	179.85	7358.70	2300.70	7204.62	-7217.51	-4917.58	0.00	1237115.24	3217935.90	39.981642	-104.722284
	15900.00	90.86	179.85	7357.21	2299.21	7304.60	-7317.50	-4917.31	0.00	1237015.27	3217937.06	39.981368	-104.722283
	16000.00	90.86	179.85	7355.71	2297.71	7404.59	-7417.49	-4917.04	0.00	1236915.29	3217938.22	39.981093	-104.722282
	16100.00	90.86	179.85	7354.21	2296.21	7504.58	-7517.48	-4916.78	0.00	1236815.31	3217939.39	39.980819	-104.722281
	16200.00	90.86	179.85	7352.72	2294.72	7604.57	-7617.47	-4916.51	0.00	1236715.33	3217940.55	39.980544	-104.722279
	16300.00	90.86	179.85	7351.22	2293.22	7704.56	-7717.46	-4916.24	0.00	1236615.35	3217941.72	39.980270	-104.722278
	16400.00	90.86	179.85	7349.72	2291.72	7804.55	-7817.45	-4915.97	0.00	1236515.37	3217942.88	39.979995	-104.722277
	16500.00	90.86	179.85	7348.23	2290.23	7904.54	-7917.43	-4915.70	0.00	1236415.39	3217944.05	39.979721	-104.722276
	16600.00	90.86	179.85	7346.73	2288.73	8004.53	-8017.42	-4915.44	0.00	1236315.42	3217945.21	39.979446	-104.722275
	16700.00	90.86	179.85	7345.23	2287.23	8104.51	-8117.41	-4915.17	0.00	1236215.44	3217946.38	39.979172	-104.722274
	16800.00	90.86	179.85	7343.74	2285.74	8204.50	-8217.40	-4914.90	0.00	1236115.46	3217947.54	39.978897	-104.722273
	16900.00	90.86	179.85	7342.24	2284.24	8304.49	-8317.39	-4914.63	0.00	1236015.48	3217948.71	39.978623	-104.722272
	17000.00	90.86	179.85	7340.74	2282.74	8404.48	-8417.38	-4914.36	0.00	1235915.50	3217949.87	39.978348	-104.722271
	17100.00	90.86	179.85	7339.25	2281.25	8504.47	-8517.36	-4914.09	0.00	1235815.52	3217951.04	39.978074	-104.722270
	17200.00	90.86	179.85	7337.75	2279.75	8604.46	-8617.35	-4913.83	0.00	1235715.55	3217952.20	39.977799	-104.722269
	17300.00	90.86	179.85	7336.25	2278.25	8704.45	-8717.34	-4913.56	0.00	1235615.57	3217953.37	39.977525	-104.722268
	17400.00	90.86	179.85	7334.76	2276.76	8804.44	-8817.33	-4913.29	0.00	1235515.59	3217954.53	39.977250	-104.722267
	17500.00	90.86	179.85	7333.26	2275.26	8904.43	-8917.32	-4913.02	0.00	1235415.61	3217955.70	39.976976	-104.722266
	17600.00	90.86	179.85	7331.76	2273.76	9004.41	-9017.31	-4912.75	0.00	1235315.63	3217956.86	39.976702	-104.722265
	17700.00	90.86	179.85	7330.27	2272.27	9104.40	-9117.30	-4912.48	0.00	1235215.65	3217958.03	39.976427	-104.722264
	17800.00	90.86	179.85	7328.77	2270.77	9204.39	-9217.28	-4912.22	0.00	1235115.67	3217959.19	39.976153	-104.722263
	17900.00	90.86	179.85	7327.27	2269.27	9304.38	-9317.27	-4911.95	0.00	1235015.70	3217960.36	39.975878	-104.722262
	18000.00	90.86	179.85	7325.78	2267.78	9404.37	-9417.26	-4911.68	0.00	1234915.72	3217961.52	39.975604	-104.722261
	18100.00	90.86	179.85	7324.28	2266.28	9504.36	-9517.25	-4911.41	0.00	1234815.74	3217962.69	39.975329	-104.722260
	18200.00	90.86	179.85	7322.78	2264.78	9604.35	-9617.24	-4911.14	0.00	1234715.76	3217963.85	39.975055	-104.722259
	18300.00	90.86	179.85	7321.29	2263.29	9704.34	-9717.23	-4910.87	0.00	1234615.78	3217965.02	39.974780	-104.722258
	18400.00	90.86	179.85	7319.79	2261.79	9804.32	-9817.21	-4910.61	0.00	1234515.80	3217966.18	39.974506	-104.722257
	18500.00	90.86	179.85	7318.29	2260.29	9904.31	-9917.20	-4910.34	0.00	1234415.83	3217967.35	39.974231	-104.722256
	18600.00	90.86	179.85	7316.80	2258.80	10004.30	-10017.19	-4910.07	0.00	1234315.85	3217968.51	39.973957	-104.722255
	18700.00	90.86	179.85	7315.30	2257.30	10104.29	-10117.18	-4909.80	0.00	1234215.87	3217969.68	39.973682	-104.722254
County Line 3112-01H BHL	18720.14	90.86	179.85	7315.00	2257.00	10124.43	-10137.32	-4909.75	0.00	1234195.73	3217969.91	39.973627	-104.722254
County Line 3112-01H BHL+100ft	18800.00	90.86	179.85	7313.80	2255.80	10204.28	-10217.17	-4909.53	0.00	1234115.89	3217970.84	39.973408	-104.722253
	18820.14	90.86	179.85	7313.50	2255.50	10224.42	-10237.30	-4909.48	0.00	1234095.76	3217971.08	39.973353	-104.722253

Survey Type: Def Plan

Survey Error Model: ISCWSA Rev 3 *** 3-D 97.071% Confidence 3.0000 sigma
Survey Program:

Description	Part	MD From (ft)	MD To (ft)	EOU Freq (ft)	Hole Size (in)	Casing Diameter (in)	Expected Max Inclination (deg)	Survey Tool Type	Borehole / Survey
	1	0.000	21.000	Act Stns	13.500	9.625		B001Mb_MWD+HRGM-Depth Only	Original Hole / County Line 3112- 01H MWD 0' to update
	1	21.000	1783.000	Act Stns	13.500	9.625		B001Mb_MWD+HRGM	Original Hole / County Line 3112- 01H MWD 0' to update
	1	1783.000	2567.937	1/100.000	13.500	9.625		B001Mb_MWD+HRGM	Original Hole / County Line 3112- 01H R1 mdv 27Oct21
	1	2567.937	18820.139	1/100.000	8.500	5.500		B001Mb_MWD+HRGM	Original Hole / County Line 3112- 01H R1 mdv 27Oct21