

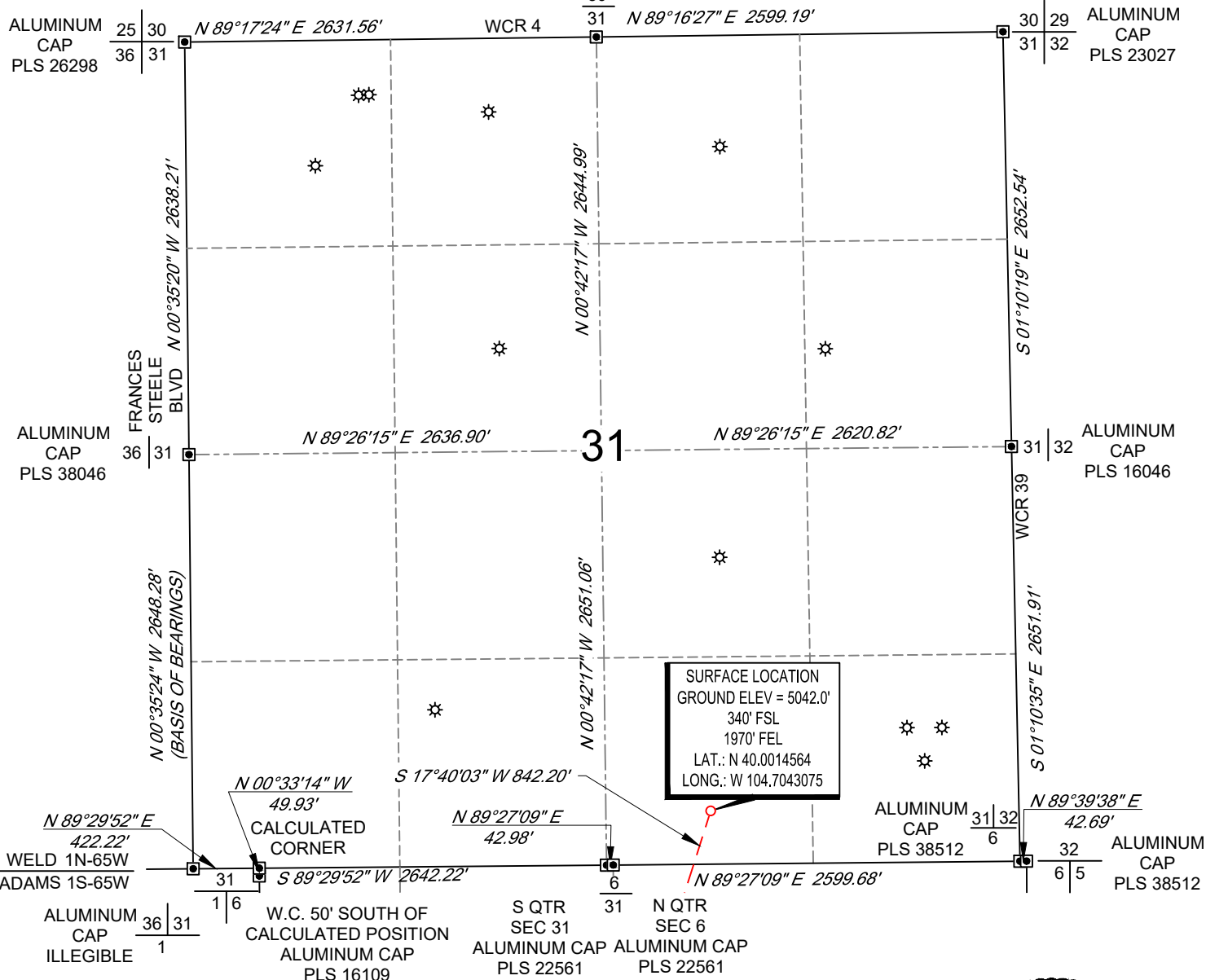
SCALE: 1" = 1000'
0' 500' 1000'

WELL LOCATION MAP

SHL SW/4 SE/4, SECTION 31, TOWNSHIP 1-N, RANGE 65-W
LPL LOT 1, SECTION 6, TOWNSHIP 1-S, RANGE 65-W
BPZ SW/4 SE/4, SECTION 7, TOWNSHIP 1-S, RANGE 65-W
BHL SW/4 SE/4, SECTION 7, TOWNSHIP 1-S, RANGE 65-W
WELD AND ADAMS COUNTY, COLORADO



ALUMINUM
CAP
PLS 26959
30



NOTES

1. Horizontal (NAD 83) and vertical (NAVD 88) datum is based on the Trimble VRS Network or OPUS Solution.
2. All directions, distances, and dimensions shown hereon are based on coordinates from the "Colorado coordinate system of 1983 north zone" (article 52 of title 38, C.R.S.).
3. All section line dimensions shown hereon are based on field measurements of existing monuments and/or physical evidence found in the field unless otherwise indicated.
4. Physical features shown hereon are for graphical representation only.
5. See Form 2A, if applicable for visible improvements within 500' of wellhead.
6. Distances to nearest section lines are measured perpendicularly.
7. This is not a land survey nor land survey plat.

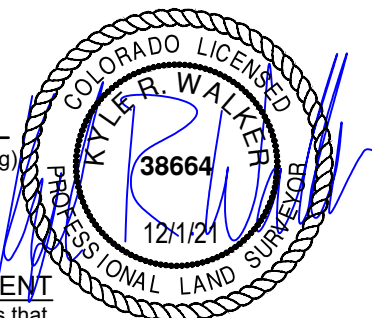
PDOP Reading: 1.5 Instrument Operator: **Eric Purcell**
Date Surveyed: **04/20/2018**

LEGEND

- ★ Well Head (Existing)
- Found Survey Monument
- ⊙ Calculated Corner

SURVEYOR'S STATEMENT

The undersigned hereby states that the well location shown hereon was staked on the ground based on existing monumentation and/or physical evidence found in the field and is correct to the best of my knowledge, information and belief.



VERDAD RESOURCES
COUNTY LINE 3107-09H
JOB NO. 116941

JLS	07/12/2018	REVISION:	
SHEET :	1 OF 3	INT	DATE
FILE:LO_COUNTY_LINE_3107_09H_REV4	SW	12/01/2021	

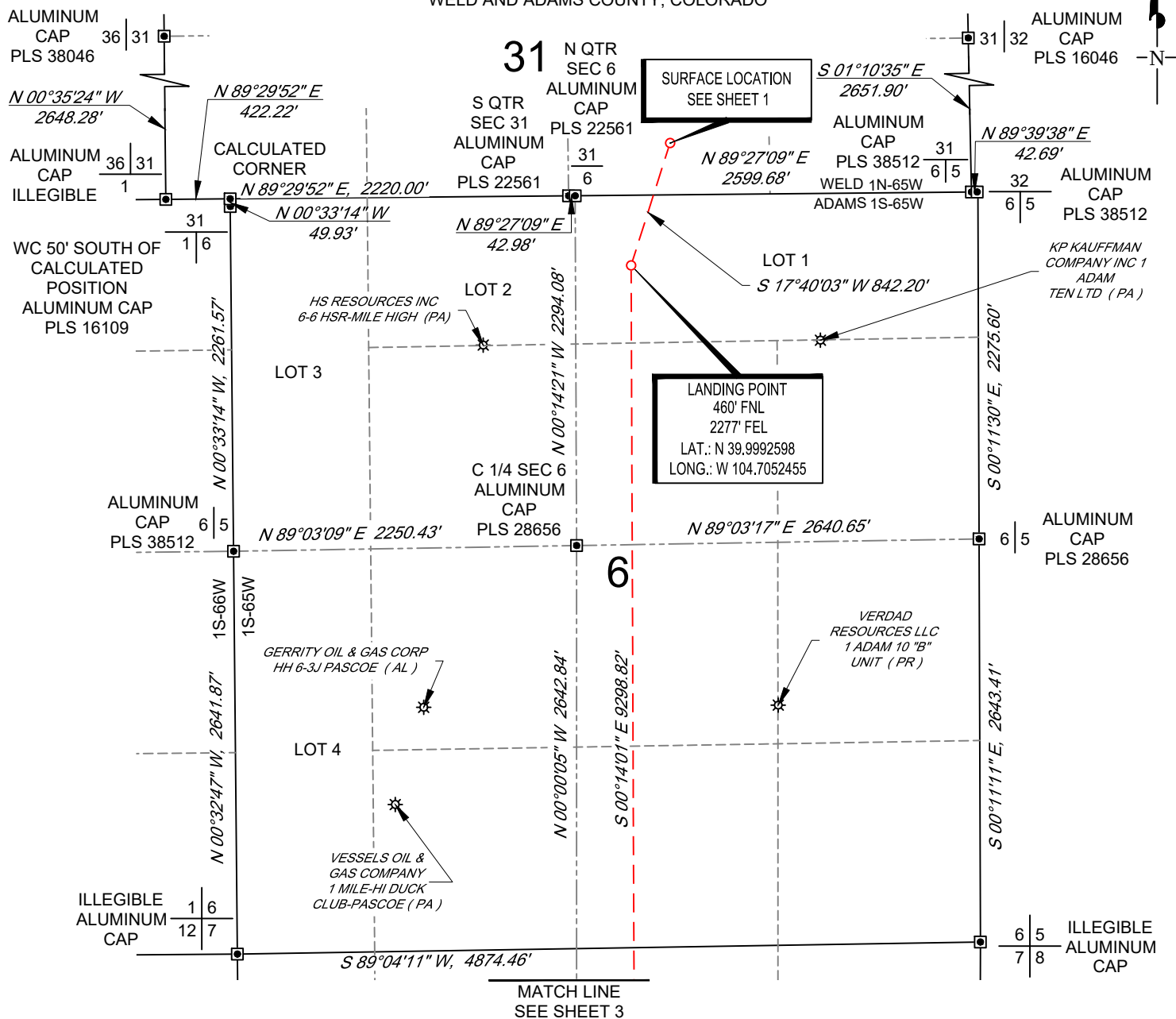


SCALE: 1" = 1000'

0' 500' 1000'

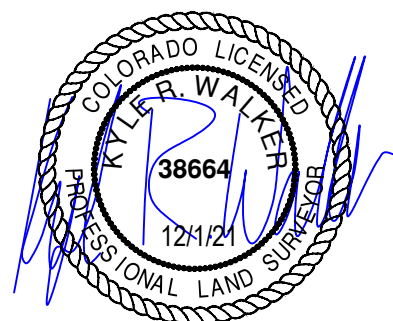
WELL LOCATION MAP

SHL SW/4 SE/4, SECTION 31, TOWNSHIP 1-N, RANGE 65-W
 LPL LOT 1, SECTION 6, TOWNSHIP 1-S, RANGE 65-W
 BPZ SW/4 SE/4, SECTION 7, TOWNSHIP 1-S, RANGE 65-W
 BHL SW/4 SE/4, SECTION 7, TOWNSHIP 1-S, RANGE 65-W
 WELD AND ADAMS COUNTY, COLORADO



LEGEND

- ✱ Well Head (Existing)
- ◻ Found Survey
- ⊙ Monument
- ⊙ Calculated Corner



VERDAD RESOURCES
 COUNTY LINE 3107-09H
 JOB NO. 116941

MML	04/25/2018	REVISION:	
SHEET :	2 OF 3	INT	DATE
FILE:LO_COUNTY_LINE_3107_09H_REV4	SW	12/01/2021	

TOPOGRAPHIC
 LOYALTY INNOVATION LEGACY
 520 Stacy Court Ste B, Lafayette, CO 80026
 303.666.0379 www.topographic.com

SCALE: 1" = 1000'

0' 500' 1000'

BOTTOM HOLE MAP

SHL SW/4 SE/4, SECTION 31, TOWNSHIP 1-N, RANGE 65-W
 LPL LOT 1 SECTION 6, TOWNSHIP 1-S, RANGE 65-W
 BPZ SW/4 SE/4, SECTION 7, TOWNSHIP 1-S, RANGE 65-W
 BHL SW/4 SE/4, SECTION 7, TOWNSHIP 1-S, RANGE 65-W
 WELD AND ADAMS COUNTY, COLORADO



MATCH LINE
SEE SHEET 2

ILLEGIBLE
ALUMINUM
CAP

1 6
12 7

N 89°04'11" E, 4874.46'

6 5
7 8 ILLEGIBLE
ALUMINUM
CAP

LOT 1

N 00°04'32" E 2644.44'

PATINA OIL & GAS
CORPORATION 1 VAN
AIRE (PA)

ALUMINUM
CAP
PLS 6937

N 89°02'17" E 2207.39'

7

N 89°01'49" E 2648.93'

ALUMINUM
CAP
PLS 23519

C 1/4 SEC 7
NO. 4
REBAR

VERDAD
RESOURCES LLC
1 GREEN (PR)

LOT 2

N 00°16'50" W 2640.31'

VERDAD
RESOURCES LLC
1 EDNA (PR)

BOTTOM OF
PRODUCTION ZONE
460' FSL
2250' FEL
LAT.: N 39.9737331
LONG.: W 104.7054075

S 00°14'01" E 100.01'

BOTTOM HOLE LOCATION
360' FSL
2250' FEL
LAT.: N 39.9734586
LONG.: W 104.7054092

S 89°03'49" W, 2173.89'

7

S 89°03'57" W, 2636.56'

ALUMINUM
CAP
PLS 28285

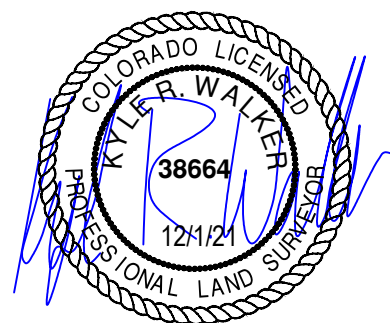
ALUMINUM
CAP
PLS 25937

S 00°00'46" E, 2642.13'

7 8
18 17 ILLEGIBLE
ALUMINUM
CAP

LEGEND

- ✱ Well Head (Existing)
- Found Survey
- Monument
- ⊙ Calculated Corner



VERDAD RESOURCES
COUNTY LINE 3107-09H
JOB NO. 116941

MML 04/25/2018

SHEET : 3 OF 3

FILE:LO_COUNTY_LINE_3107_09H_REV4

REVISION:

INT DATE

SW 12/01/2021

