

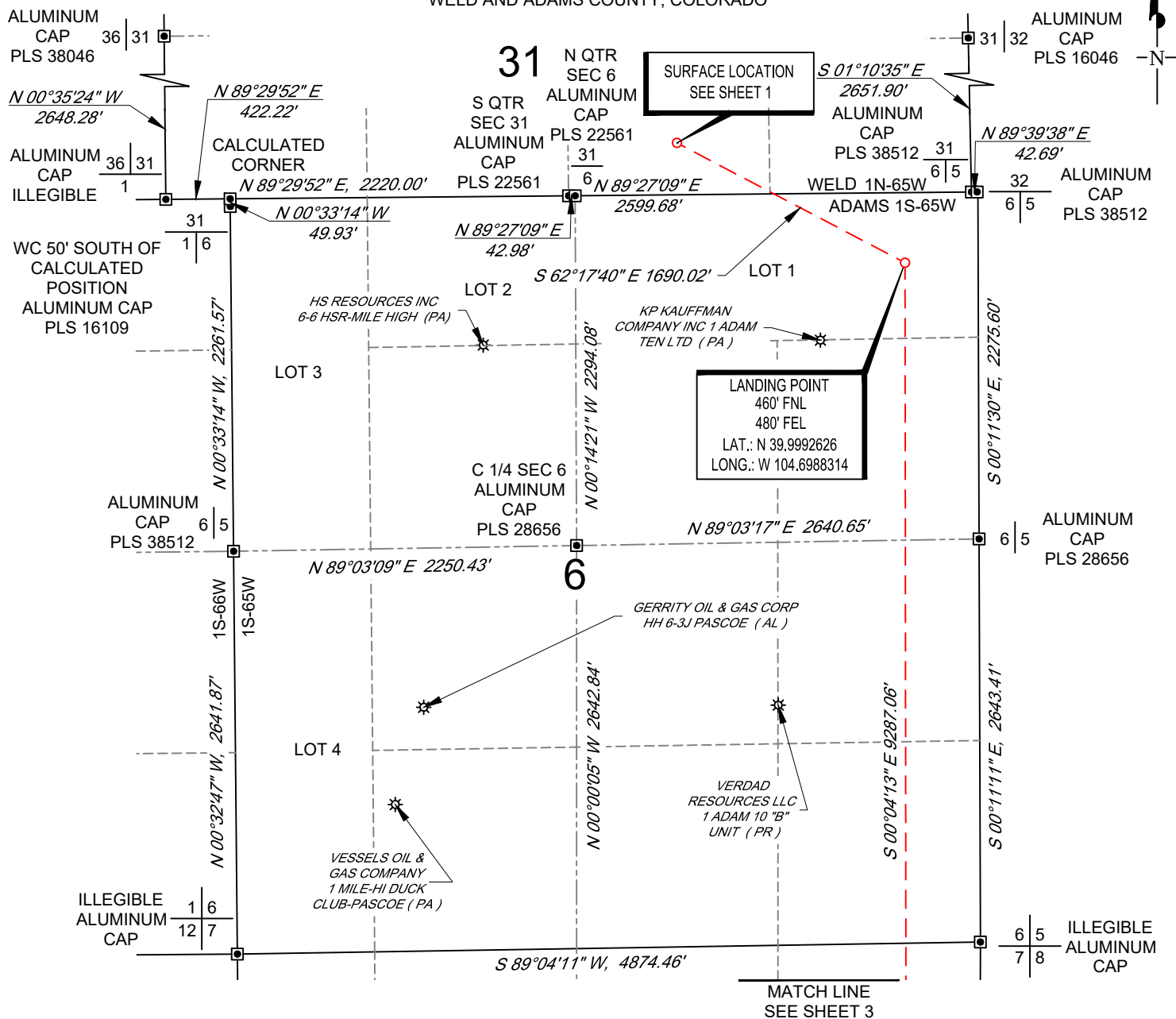
<b>VERDAD RESOURCES</b> <b>COUNTY LINE 3107-12H</b> <b>JOB NO. 116941</b>	JLS	07/12/2018	REVISION:	
	SHEET : 1 OF 3		INT	DATE
	FILE:LO_COUNTY_LINE_3107_12H_REV4		SW	12/01/2021

SCALE: 1" = 1000'

0' 500' 1000'

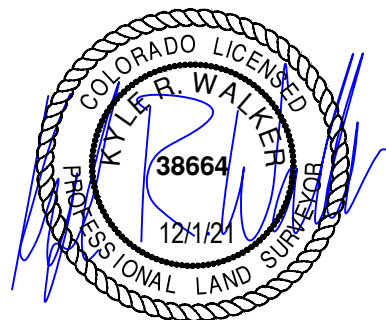
# WELL LOCATION MAP

SHL SW/4 SE/4, SECTION 31, TOWNSHIP 1-N, RANGE 65-W  
 LPL LOT 1, SECTION 6, TOWNSHIP 1-S, RANGE 65-W  
 BPZ SE/4 SE/4, SECTION 7, TOWNSHIP 1-S, RANGE 65-W  
 BHL SE/4 SE/4, SECTION 7, TOWNSHIP 1-S, RANGE 65-W  
 WELD AND ADAMS COUNTY, COLORADO



## LEGEND

- ✱ Well Head (Existing)
- Found Survey Monument
- ⊙ Calculated Corner



VERDAD RESOURCES  
 COUNTY LINE 3107-12H  
 JOB NO. 116941

MML	04/25/2018	REVISION:	
SHEET :	2 OF 3	INT	DATE
FILE:LO_COUNTY_LINE_3107_12H_REV4	SW	12/01/2021	

**TOPOGRAPHIC**  
 LOYALTY INNOVATION LEGACY  
 520 Stacy Court Ste B, Lafayette, CO 80026  
 303.666.0379 www.topographic.com

SCALE: 1" = 1000'  
0' 500' 1000'

# BOTTOM HOLE MAP

SHL SW/4 SE/4, SECTION 31, TOWNSHIP 1-N, RANGE 65-W  
LPL LOT 1, SECTION 6, TOWNSHIP 1-S, RANGE 65-W  
BPZ SE/4 SE/4, SECTION 7, TOWNSHIP 1-S, RANGE 65-W  
BHL SE/4 SE/4, SECTION 7, TOWNSHIP 1-S, RANGE 65-W  
WELD AND ADAMS COUNTY, COLORADO



MATCH LINE  
SEE SHEET 2

ILLEGIBLE  
ALUMINUM  
CAP

1 6  
12 7

N 89°04'11" E, 4874.46'

6 5  
7 8 ILLEGIBLE  
ALUMINUM  
CAP

LOT 1

N 00°18'46" W, 2645.41'

N 00°04'32" E 2644.44'

S 00°04'13" E 9287.06'

S 00°04'52" W, 2642.61'

PATINA OIL & GAS  
CORPORATION 1 VAN AIRE ( PA )

7

ALUMINUM  
CAP 12 7  
PLS 6937

N 89°02'17" E 2207.39'

N 89°01'49" E 2648.93'

ALUMINUM  
CAP 7 8  
PLS 23519

C 1/4 SEC 7  
NO. 4  
REBAR

BOTTOM OF  
PRODUCTION ZONE  
460' FSL  
480' FWL  
LAT.: N 39.9737686  
LONG.: W 104.6990901

VERDAD  
RESOURCES LLC  
1 EDNA ( PR )

LOT 2

N 01°00'27" W, 2639.16'

N 00°16'50" W, 2640.31'

VERDAD  
RESOURCES LLC  
1 GREEN ( PR )

S 00°04'13" E 100.01'  
BOTTOM HOLE LOCATION  
360' FSL  
480' FEL  
LAT.: N 39.9734941  
LONG.: W 104.6990929

S 00°00'46" E, 2642.13'

ALUMINUM  
CAP 12 7  
PLS 28285

S 89°03'49" W, 2173.89'

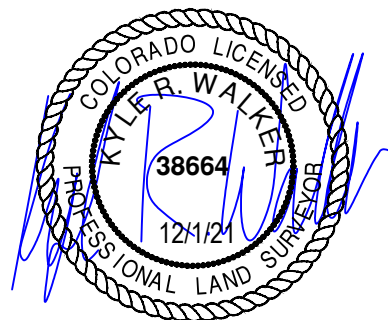
S 89°03'57" W, 2636.56'

7 8  
18 17 ILLEGIBLE  
ALUMINUM  
CAP

18  
ALUMINUM  
CAP  
PLS 25937

## LEGEND

- ⊛ Well Head (Existing)
- Found Survey
- ⊙ Monument
- ⊙ Calculated Corner



VERDAD RESOURCES  
COUNTY LINE 3107-12H  
JOB NO. 116941

MML 04/25/2018

REVISION:

SHEET : 3 OF 3

INT DATE

FILE:LO\_COUNTY\_LINE\_3107\_12H\_REV4

SW 12/01/2021

**TOPOGRAPHIC**  
LOYALTY INNOVATION LEGACY  
520 Stacy Court Ste B, Lafayette, CO 80026  
303.666.0379 www.topographic.com