

SCALE: 1" = 1000'

0' 500' 1000'

# WELL LOCATION MAP

SHL SW/4 SE/4, SECTION 31, TOWNSHIP 1-N, RANGE 65-W  
LPL LOT 1, SECTION 6, TOWNSHIP 1-S, RANGE 65-W  
BPZ SE/4 SE/4, SECTION 7, TOWNSHIP 1-S, RANGE 65-W  
BHL SE/4 SE/4, SECTION 7, TOWNSHIP 1-S, RANGE 65-W  
WELD AND ADAMS COUNTY, COLORADO



ALUMINUM  
CAP  
PLS 26959  
30

ALUMINUM  
CAP  
PLS 26298

25  
30  
36  
31

N 89°17'24" E 2631.56'

WCR 4

31

N 89°16'27" E 2599.19'

ALUMINUM  
CAP  
PLS 23027

30  
31  
29  
32

FRANCES  
STEELE  
BLVD

N 00°35'20" W 2638.21'

N 00°42'17" W 2644.99'

S 01°10'19" E 2652.54'

ALUMINUM  
CAP  
PLS 38046

36  
31

N 89°26'15" E 2636.90'

31

N 89°26'15" E 2620.82'

ALUMINUM  
CAP  
PLS 16046

31  
32

N 00°35'24" W 2648.28'  
(BASIS OF BEARINGS)

N 00°42'17" W 2651.06'

S 01°10'35" E 2651.91'

SURFACE LOCATION  
GROUND ELEV = 5042.8'  
340' FSL  
1940' FEL  
LAT.: N 40.0014564  
LONG.: W 104.7042004

N 00°33'14" W  
49.93'  
CALCULATED  
CORNER

S 49°03'43" E 1207.67'

N 89°27'09" E  
42.98'

ALUMINUM  
CAP  
PLS 38512

31  
32  
6

ALUMINUM  
CAP  
PLS 38512

N 89°39'38" E  
42.69'

N 89°29'52" E  
422.22'

WELD 1N-65W  
ADAMS 1S-65W

31  
6

S 89°29'52" W 2642.22'

N 89°27'09" E 2599.68'

ALUMINUM  
CAP  
ILLEGIBLE

36  
31  
1

W.C. 50' SOUTH OF  
CALCULATED POSITION  
ALUMINUM CAP  
PLS 16109

S QTR  
SEC 31  
ALUMINUM CAP  
PLS 22561

N QTR  
SEC 6  
ALUMINUM CAP  
PLS 22561

## NOTES

1. Horizontal (NAD 83) and vertical (NAVD 88) datum is based on the Trimble VRS Network or OPUS Solution.
2. All directions, distances, and dimensions shown hereon are based on coordinates from the "Colorado coordinate system of 1983 north zone" (article 52 of title 38, C.R.S.).
3. All section line dimensions shown hereon are based on field measurements of existing monuments and/or physical evidence found in the field unless otherwise indicated.
4. Physical features shown hereon are for graphical representation only.
5. See Form 2A, if applicable for visible improvements within 500' of wellhead.
6. Distances to nearest section lines are measured perpendicularly.
7. This is not a land survey nor land survey plat.

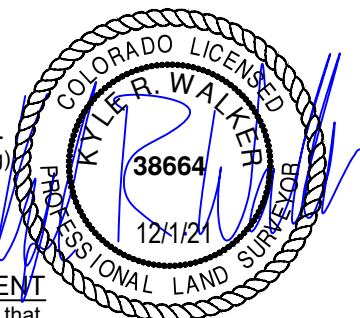
PDOP Reading: 1.5 Instrument Operator: **Eric Purcell**  
Date Surveyed: **04/20/2018**

## LEGEND

- Well Head (Existing)
- Found Survey Monument
- Calculated Corner

## SURVEYOR'S STATEMENT

The undersigned hereby states that the well location shown hereon was staked on the ground based on existing monumentation and/or physical evidence found in the field and is correct to the best of my knowledge, information and belief.



VERDAD RESOURCES  
COUNTY LINE 3107-11H  
JOB NO. 116941

JLS	07/12/2018	REVISION:	
SHEET :	1 OF 3	INT	DATE
FILE:LO_COUNTY_LINE_3107_11H_REV4	SW	12/01/2021	

**TOPOGRAPHIC**  
LOYALTY INNOVATION LEGACY  
520 Stacy Court Ste B, Lafayette, CO 80026  
303.666.0379 www.topographic.com

G:\GEOSURV\WELDZNORTH\VERDAD\COUNTY LINE 3107\FINAL PRODUCTS\LO COUNTY LINE 3107 11H REV4.DWG 12/1/2021 7:27:28 AM swes

SCALE: 1" = 1000'

0' 500' 1000'

# BOTTOM HOLE MAP

SHL SW/4 SE/4, SECTION 31, TOWNSHIP 1-N, RANGE 65-W  
 LPL LOT 1, SECTION 6, TOWNSHIP 1-S, RANGE 65-W  
 BPZ SE/4 SE/4, SECTION 7, TOWNSHIP 1-S, RANGE 65-W  
 BHL SE/4 SE/4, SECTION 7, TOWNSHIP 1-S, RANGE 65-W  
 WELD AND ADAMS COUNTY, COLORADO



MATCH LINE  
SEE SHEET 2

ILLEGIBLE  
ALUMINUM  
CAP

1 6  
12 7

N 89°04'11" E, 4874.46'

6 5  
7 8

ILLEGIBLE  
ALUMINUM  
CAP

LOT 1

N 00°18'46" W, 2645.41'

N 00°04'32" E 2644.44'

S 00°07'29" E 9290.97'

S 00°04'52" W, 2642.61'

ALUMINUM  
CAP  
PLS 6937

N 89°02'17" E 2207.39'

7

N 89°01'49" E 2648.93'

ALUMINUM  
CAP  
PLS 23519

C 1/4 SEC 7  
NO. 4  
REBAR

BOTTOM OF  
PRODUCTION ZONE  
460' FSL  
1070' FEL  
LAT.: N 39.9737568  
LONG.: W 104.7011959

VERDAD  
RESOURCES LLC  
1 EDNA (PR)

BOTTOM HOLE LOCATION  
360' FSL  
1070' FEL  
LAT.: N 39.9734823  
LONG.: W 104.7011984

VERDAD  
RESOURCES LLC  
1 GREEN (PR)

LOT 2

N 01°00'27" W, 2639.16'

N 00°16'50" W, 2640.31'

S 00°00'46" E, 2642.13'

S 89°03'49" W, 2173.89'

7

S 89°03'57" W, 2636.56'

ALUMINUM  
CAP  
PLS 28285

ALUMINUM  
CAP  
PLS 25937

ILLEGIBLE  
ALUMINUM  
CAP

## LEGEND

- ⊛ Well Head (Existing)
- ▣ Found Survey
- ⊙ Monument
- ⊙ Calculated Corner



VERDAD RESOURCES  
COUNTY LINE 3107-11H  
JOB NO. 116941

MML 04/25/2018

SHEET : 3 OF 3

FILE:LO\_COUNTY\_LINE\_3107\_11H\_REV4

REVISION:

INT DATE

SW 12/01/2021

