

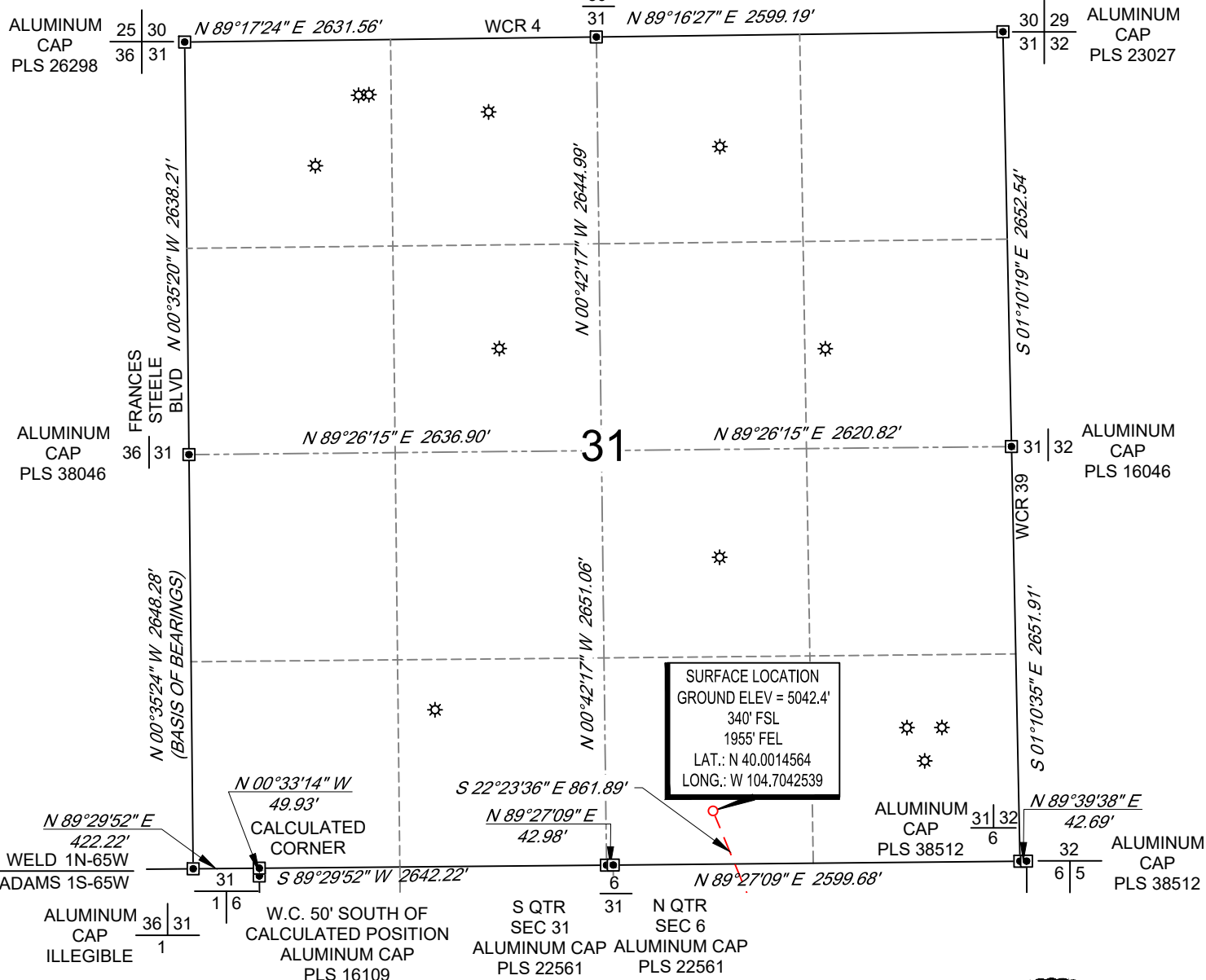
SCALE: 1" = 1000'  
0' 500' 1000'

# WELL LOCATION MAP

SHL SW/4 SE/4, SECTION 31, TOWNSHIP 1-N, RANGE 65-W  
LPL LOT 1, SECTION 6, TOWNSHIP 1-S, RANGE 65-W  
BPZ SW/4 SE/4, SECTION 7, TOWNSHIP 1-S, RANGE 65-W  
BHL SW/4 SE/4, SECTION 7, TOWNSHIP 1-S, RANGE 65-W  
WELD AND ADAMS COUNTY, COLORADO



ALUMINUM  
CAP  
PLS 26959  
30



## NOTES

1. Horizontal (NAD 83) and vertical (NAVD 88) datum is based on the Trimble VRS Network or OPUS Solution.
2. All directions, distances, and dimensions shown hereon are based on coordinates from the "Colorado coordinate system of 1983 north zone" (article 52 of title 38, C.R.S.).
3. All section line dimensions shown hereon are based on field measurements of existing monuments and/or physical evidence found in the field unless otherwise indicated.
4. Physical features shown hereon are for graphical representation only.
5. See Form 2A, if applicable for visible improvements within 500' of wellhead.
6. Distances to nearest section lines are measured perpendicularly.
7. This is not a land survey nor land survey plat.

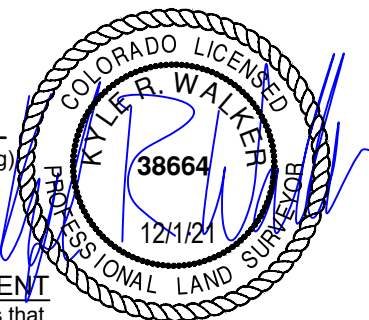
PDOP Reading: 1.5 Instrument Operator: **Eric Purcell**  
Date Surveyed: **04/20/2018**

## LEGEND

- Well Head (Existing)
- Found Survey Monument
- Calculated Corner

## SURVEYOR'S STATEMENT

The undersigned hereby states that the well location shown hereon was staked on the ground based on existing monumentation and/or physical evidence found in the field and is correct to the best of my knowledge, information and belief.



VERDAD RESOURCES  
COUNTY LINE 3107-10H  
JOB NO. 116941

JLS	07/12/2018	REVISION:	
SHEET :	1 OF 3	INT	DATE
FILE:LO_COUNTY_LINE_3107_10H_REV4	SW	12/1/2021	

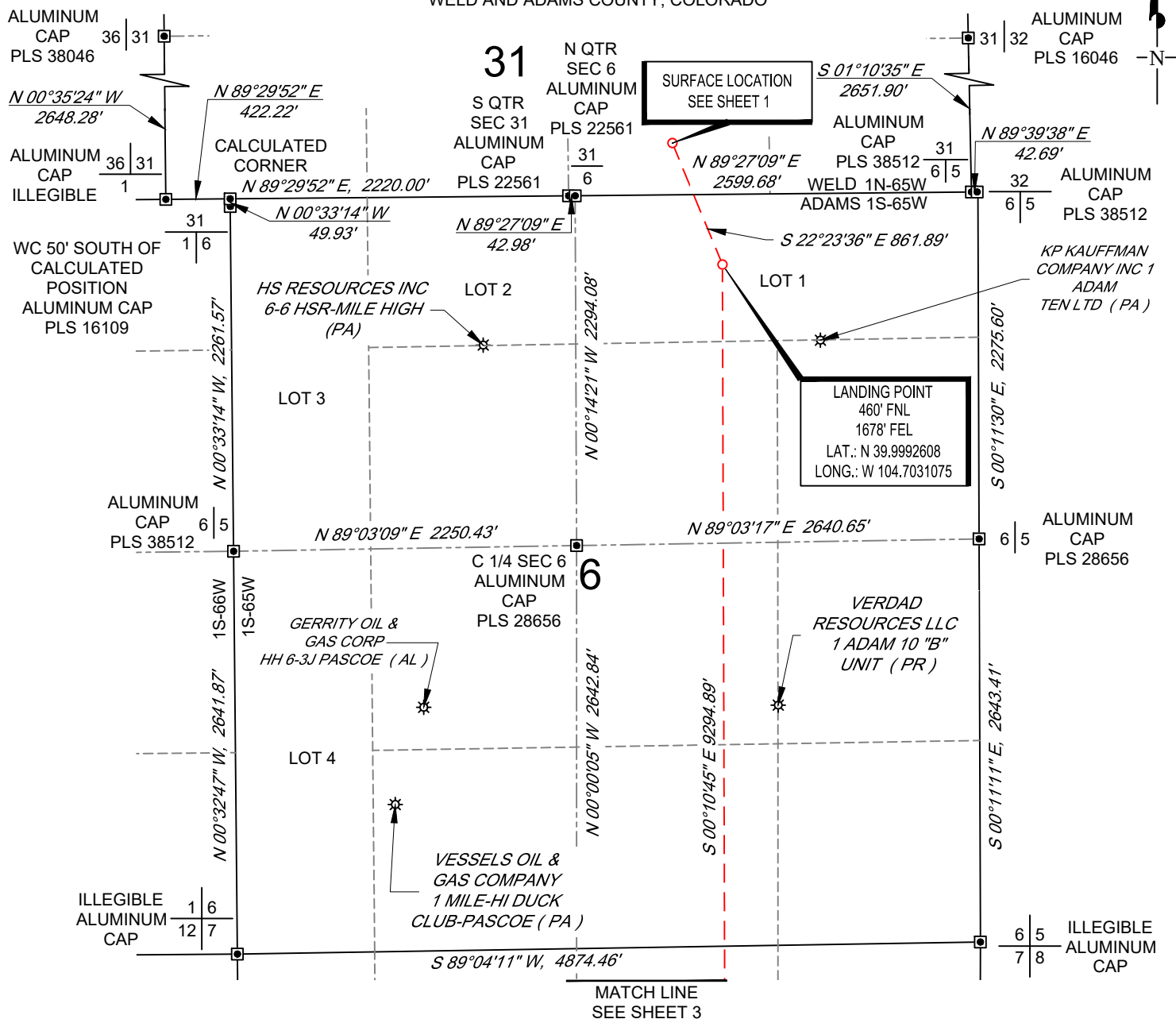
**TOPOGRAPHIC**  
LOYALTY INNOVATION LEGACY  
520 Stacy Court Ste B, Lafayette, CO 80026  
303.666.0379 www.topographic.com

SCALE: 1" = 1000'

0' 500' 1000'

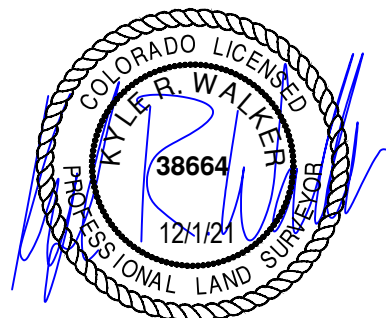
# WELL LOCATION MAP

SHL SW/4 SE/4, SECTION 31, TOWNSHIP 1-N, RANGE 65-W  
 LPL LOT 1, SECTION 6, TOWNSHIP 1-S, RANGE 65-W  
 BPZ SW/4 SE/4, SECTION 7, TOWNSHIP 1-S, RANGE 65-W  
 BHL SW/4 SE/4, SECTION 7, TOWNSHIP 1-S, RANGE 65-W  
 WELD AND ADAMS COUNTY, COLORADO



## LEGEND

- ✱ Well Head (Existing)
- ◻ Found Survey
- ⊙ Monument
- ⊙ Calculated Corner



VERDAD RESOURCES  
 COUNTY LINE 3107-10H  
 JOB NO. 116941

MML	04/25/2018	REVISION:	
SHEET :	2 OF 3	INT	DATE
FILE:LO_COUNTY_LINE_3107_10H_REV4	SW	12/1/2021	

**TOPOGRAPHIC**  
 LOYALTY INNOVATION LEGACY  
 520 Stacy Court Ste B, Lafayette, CO 80026  
 303.666.0379 www.topographic.com

SCALE: 1" = 1000'

0' 500' 1000'

# BOTTOM HOLE MAP

SHL SW/4 SE/4, SECTION 31, TOWNSHIP 1-N, RANGE 65-W  
 LPL LOT 1, SECTION 6, TOWNSHIP 1-S, RANGE 65-W  
 BPZ SW/4 SE/4, SECTION 7, TOWNSHIP 1-S, RANGE 65-W  
 BHL SW/4 SE/4, SECTION 7, TOWNSHIP 1-S, RANGE 65-W  
 WELD AND ADAMS COUNTY, COLORADO



MATCH LINE  
SEE SHEET 2

ILLEGIBLE  
ALUMINUM  
CAP

1 6  
12 7

N 89°04'11" E, 4874.46'

6 5  
7 8 ILLEGIBLE  
ALUMINUM  
CAP

LOT 1

N 00°04'32" E 2644.44'

S 00°10'45" E 9294.89'

PATINA OIL & GAS  
CORPORATION 1 VAN  
AIRE (PA)

S 00°04'52" W, 2642.61'

ALUMINUM  
CAP  
PLS 6937

N 89°02'17" E 2207.39'

7

N 89°01'49" E 2648.93'

ALUMINUM  
CAP  
PLS 23519

C 1/4 SEC 7  
NO. 4  
REBAR

N 01°00'27" W, 2639.16'

LOT 2

N 00°16'50" W, 2640.31'

VERDAD  
RESOURCES LLC  
1 GREEN (PR)

VERDAD  
RESOURCES LLC  
1 EDNA (PR)

BOTTOM OF  
PRODUCTION ZONE  
460' FSL  
1660' FEL  
LAT.: N 39.9737450  
LONG.: W 104.7033017

BOTTOM HOLE LOCATION  
360' FSL  
1660' FEL  
LAT.: N 39.9734704  
LONG.: W 104.7033038

S 00°00'46" E, 2642.13'

ALUMINUM  
CAP  
PLS 28285

S 89°03'49" W, 2173.89'

7

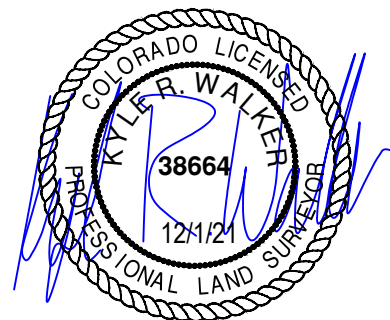
S 89°03'57" W, 2636.56'

ALUMINUM  
CAP  
PLS 25937

7 8  
18 17 ILLEGIBLE  
ALUMINUM  
CAP

## LEGEND

- ⊛ Well Head (Existing)
- Found Survey
- ⊙ Monument
- ⊙ Calculated Corner



VERDAD RESOURCES  
COUNTY LINE 3107-10H  
JOB NO. 116941

MML 04/25/2018

REVISION:

SHEET : 3 OF 3

INT DATE

FILE:LO\_COUNTY\_LINE\_3107\_10H\_REV4

SW 12/1/2021

**TOPOGRAPHIC**  
LOYALTY INNOVATION LEGACY  
520 Stacy Court Ste B, Lafayette, CO 80026  
303.666.0379 www.topographic.com