



Verdad Resources LLC



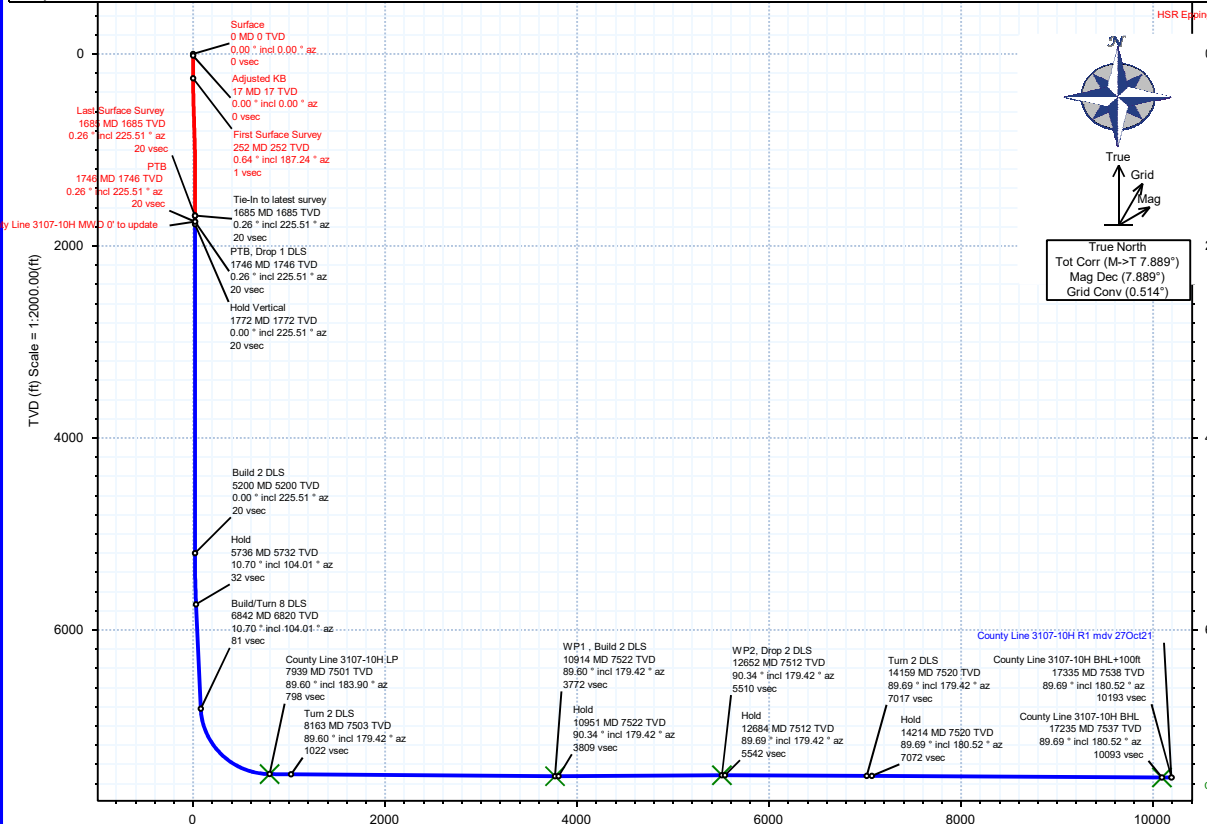
Rev 1

Borehole:	Well:	Field:	Structure:
Original Hole	County Line 3107-10H	CO, Weld County (NAD 83 NZ) - 2019	Verdad Resources 31-01N-65W (County Line Pad)

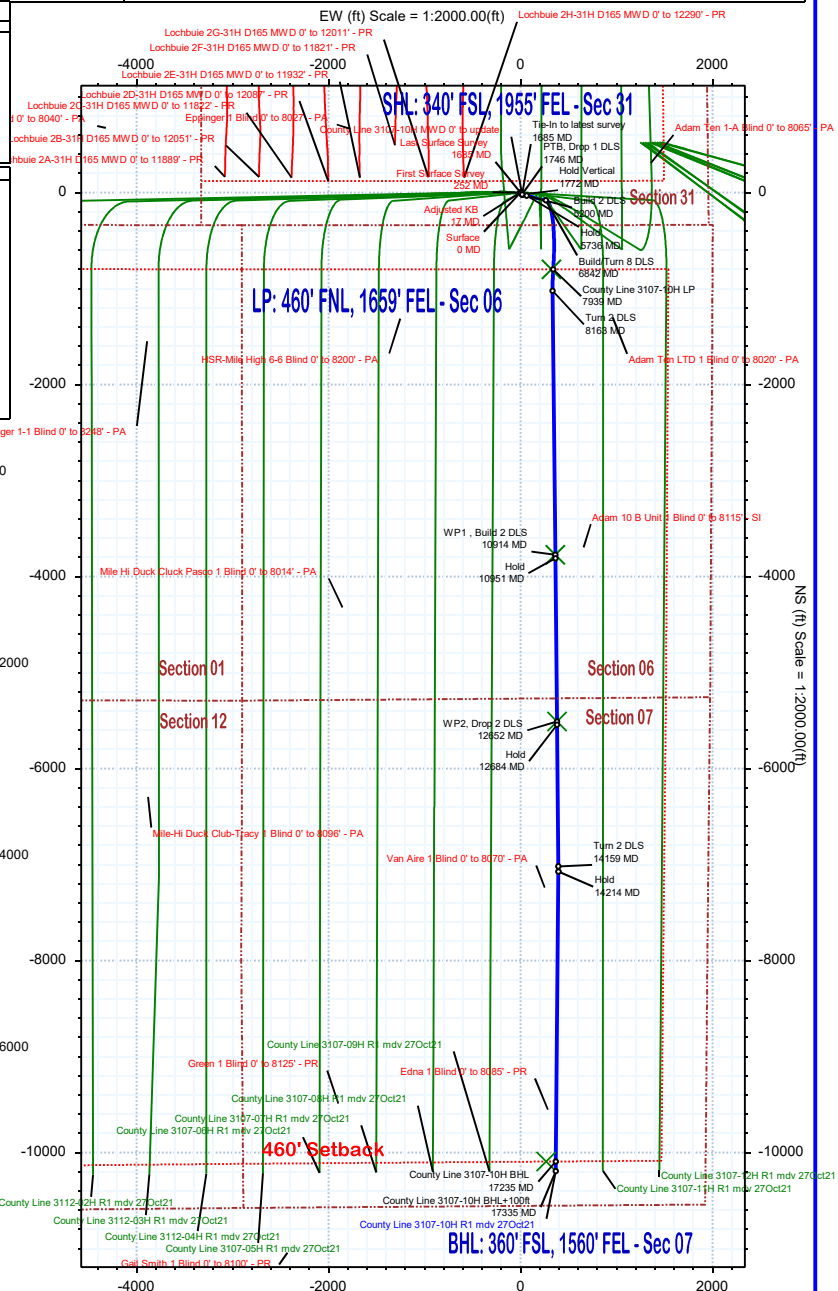
Gravity & Magnetic Parameters	Surface Location	NAD83 Colorado State Plane, Northern Zone, US Feet	Miscellaneous
Model: HDGM 2021 Dip: 66.238° Date: 27-Oct-2021	Lat: N 40 0 5.24 Northing: 1244377.59RUS Grid Conv: 0.5142°		Slot: County Line 3107-10H TVD Ref: KB 21ft(5058ft above MSL)
MagDec: 7.889° FS: 51647.303nT Gravity FS: 998.982mgn (9.80665 Based)	Lon: W 104 42 15.31 Easting: 3222923.37RUS Scale Fact: 0.99996626		Plan: County Line 3107-10H R1 mdv 27Oct21

Target Description	North	East	South	West	Top	Bottom	Left	Right	Center
County Line Pad - Sec 31-30 - CL	N 40 0 5.24	W 104 42 15.31	1244377.59	3222923.37	180.33	180.33	180.33	180.33	180.33
County Line Pad - Sec 01-12 - CL	N 40 0 5.24	W 104 42 15.31	1244377.59	3222923.37	180.33	180.33	180.33	180.33	180.33
County Line Pad - Sec 06-07 - SB	N 40 0 5.24	W 104 42 15.31	1244377.59	3222923.37	180.33	180.33	180.33	180.33	180.33
County Line Pad - Sec 01-12 - SB	N 40 0 5.24	W 104 42 15.31	1244377.59	3222923.37	180.33	180.33	180.33	180.33	180.33
County Line Pad - Sec 01-12 - 460' SB	N 40 0 5.24	W 104 42 15.31	1244377.59	3222923.37	180.33	180.33	180.33	180.33	180.33
County Line Pad - Sec 06-07 - CL	N 40 0 5.24	W 104 42 15.31	1244377.59	3222923.37	180.33	180.33	180.33	180.33	180.33
County Line Pad - Sec 31-30-06-07	N 40 0 5.24	W 104 42 15.31	1244377.59	3222923.37	180.33	180.33	180.33	180.33	180.33
County Line 3107-10H LP	N 39 59 57.34	W 104 42 11.19	1243580.71	3223251.71	7501.00	797.96	-799.83	321.18	321.18
County Line 3107-10H WP1	N 39 59 27.96	W 104 42 10.67	1243607.29	3223318.50	7512.00	5509.96	-5511.83	378.88	361.29
County Line 3107-10H BHL	N 39 58 25.48	W 104 42 11.89	1243285.87	3223280.81	7537.00	10093.18	-10094.89	266.87	266.87

Critical Point	MD	INCL	AZIM	TVD	VSEC	N(+)S(-)	E(+)W(-)	DLS
Tie-in to latest survey	1685.00	0.26	225.51	1684.58	19.92	-20.01	15.23	0.00
PTB, Drop 1 DLS	1746.00	0.26	225.51	1745.57	20.12	-20.20	15.04	0.00
Hold Vertical	1772.00	0.00	225.51	1771.57	20.16	-20.24	14.99	1.00
Build 2 DLS	5200.43	0.00	225.51	5200.00	20.16	-20.24	14.99	0.00
Hold	5735.52	10.70	104.01	5731.99	31.94	-32.31	63.34	2.00
Build/Turn 8 DLS	6842.47	10.70	104.01	6819.69	80.55	-82.07	262.79	0.00
County Line 3107-10H LP	7939.15	89.60	183.90	7501.00	797.85	-799.83	340.00	8.00
Turn 2 DLS	8163.08	89.60	179.42	7502.58	1021.66	-1023.60	333.51	2.00
WP1, Build 2 DLS	10913.52	89.60	179.42	7522.00	3771.69	-3773.83	361.29	0.00
WP2, Drop 2 DLS	10950.63	90.34	179.42	7522.02	3808.79	-3810.93	361.67	2.00
Hold	12851.64	90.34	179.42	7512.00	5506.66	-5511.83	378.88	0.00
Hold	12684.27	89.69	179.42	7511.99	5542.18	-5544.46	379.21	2.00
Turn 2 DLS	14159.27	89.69	179.42	7520.10	7016.97	-7019.36	394.14	0.00
Hold	14214.16	89.69	180.52	7520.40	7071.86	-7074.25	394.17	2.00
County Line 3107-10H BHL	17234.97	89.69	180.52	7537.00	10092.61	-10094.89	366.87	0.00
County Line 3107-10H BHL+100ft	17334.97	89.69	180.52	7537.55	10192.60	-10194.88	365.97	0.00



Vertical Section (ft) Azim = 180.33° Scale = 1:2000.00(ft) Origin = 0N/-S, 0E/-W



County Line 3107-10H R1 mdv 27Oct21 Proposal Geodetic Report



(Def Plan)

Report Date: November 15, 2021 - 12:16 PM
Client: Verdad Resources LLC
Field: CO, Weld County (NAD 83 NZ) - 2019
Structure / Slot: Verdad Resources 31-01N-65W (County Line Pad) / County Line 3107-10H
Well: County Line 3107-10H
Borehole: Original Hole
UWI / API#: Unknown / 05-123-51175
Survey Name: County Line 3107-10H R1 mdv 27Oct21
Survey Date: November 15, 2021
Tort / AHD / DDI / ERD Ratio: 117.418 ° / 10418.294 ft / 6.449 / 1.382
Coordinate Reference System: NAD83 Colorado State Plane, Northern Zone, US Feet
Location Lat / Long: N 40° 0' 5.24304", W 104° 42' 15.31404"
Location Grid N/E Y/X: N 1244377.594 ftUS, E 3222923.374 ftUS
CRS Grid Convergence Angle: 0.5142 °
Grid Scale Factor: 0.99996626
Version / Patch: 2.10.824.0

Survey / DLS Computation: Minimum Curvature / Lubinski
Vertical Section Azimuth: 180.330 ° (True North)
Vertical Section Origin: 0.000 ft, 0.000 ft
TVD Reference Datum: KB 21ft
TVD Reference Elevation: 5058.000 ft above MSL
Seabed / Ground Elevation: 5037.000 ft above MSL
Magnetic Declination: 7.884 °
Total Gravity Field Strength: 998.9824mgn (9.80665 Based)
Gravity Model: GARM
Total Magnetic Field Strength: 51642.046 nT
Magnetic Dip Angle: 66.236 °
Declination Date: November 15, 2021
Magnetic Declination Model: HDGM 2021
North Reference: True North
Grid Convergence Used: 0.0000 °
Total Corr Mag North->True North: 7.8840 °
Local Coord Referenced To: Well Head

Comments	MD (ft)	Incl (°)	Azim True (°)	TVD (ft)	TVDSS (ft)	VSEC (ft)	NS (ft)	EW (ft)	DLS (°/100ft)	Northing (ftUS)	Easting (ftUS)	Latitude (°)	Longitude (°)
Surface	0.00	0.00	0.00	0.00	-5058.00	0.00	0.00	0.00	N/A	1244377.59	3222923.37	40.001456	-104.704254
Adjusted KB	17.00	0.00	0.00	17.00	-5041.00	0.00	0.00	0.00	0.00	1244377.59	3222923.37	40.001456	-104.704254
First Surface Survey	252.00	0.64	187.24	252.00	-4806.00	1.30	-1.30	-0.17	0.27	1244376.29	3222923.22	40.001453	-104.704254
	283.00	0.44	197.78	282.99	-4775.01	1.59	-1.59	-0.22	0.72	1244376.01	3222923.16	40.001452	-104.704255
	313.00	0.34	159.79	312.99	-4745.01	1.78	-1.78	-0.23	0.90	1244375.81	3222923.16	40.001452	-104.704255
	343.00	0.46	193.26	342.99	-4715.01	1.98	-1.98	-0.22	0.86	1244375.61	3222923.17	40.001451	-104.704255
	373.00	0.68	189.85	372.99	-4685.01	2.28	-2.27	-0.28	0.74	1244375.32	3222923.11	40.001450	-104.704255
	403.00	1.02	158.72	402.99	-4655.01	2.70	-2.70	-0.22	1.87	1244374.89	3222923.18	40.001449	-104.704255
	433.00	1.39	155.79	432.98	-4625.02	3.28	-3.28	0.03	1.25	1244374.32	3222923.43	40.001447	-104.704254
	463.00	1.46	152.62	462.97	-4595.03	3.95	-3.95	0.35	0.95	1244373.65	3222923.76	40.001446	-104.704253
	493.00	1.61	149.08	492.96	-4565.04	4.68	-4.68	0.69	0.70	1244372.92	3222924.10	40.001444	-104.704251
	523.00	1.86	154.59	522.95	-4535.05	5.50	-5.51	1.05	0.90	1244372.09	3222924.48	40.001441	-104.704250
	553.00	2.18	154.10	552.93	-4505.07	6.46	-6.46	1.51	1.07	1244371.14	3222924.94	40.001439	-104.704249
	583.00	2.19	144.26	582.91	-4475.09	7.43	-7.44	2.10	1.25	1244370.17	3222925.54	40.001436	-104.704246
	613.00	2.26	142.34	612.88	-4445.12	8.36	-8.38	2.79	0.34	1244369.24	3222926.24	40.001433	-104.704244
	643.00	2.39	136.79	642.86	-4415.14	9.28	-9.30	3.58	0.87	1244368.33	3222927.04	40.001431	-104.704241
	673.00	2.31	132.75	672.83	-4385.17	10.14	-10.17	4.45	0.61	1244367.47	3222927.92	40.001428	-104.704238
	703.00	2.44	136.41	702.81	-4355.19	11.01	-11.04	5.34	0.67	1244366.60	3222928.81	40.001426	-104.704235
	733.00	2.30	143.14	732.78	-4325.22	11.95	-11.98	6.14	1.04	1244365.67	3222929.62	40.001424	-104.704232
	763.00	2.05	142.64	762.76	-4295.24	12.85	-12.89	6.83	0.84	1244364.76	3222930.32	40.001421	-104.704230
	793.00	2.07	145.46	792.74	-4265.26	13.72	-13.76	7.46	0.34	1244363.90	3222930.96	40.001419	-104.704227
	823.00	2.18	143.61	822.72	-4235.28	14.62	-14.67	8.11	0.43	1244363.00	3222931.61	40.001416	-104.704225
	853.00	2.34	145.59	852.70	-4205.30	15.58	-15.63	8.79	0.59	1244362.04	3222932.30	40.001413	-104.704223
	883.00	2.42	145.51	882.67	-4175.33	16.61	-16.66	9.49	0.27	1244361.02	3222933.02	40.001411	-104.704220
	913.00	2.21	144.78	912.65	-4145.35	17.60	-17.66	10.19	0.71	1244360.03	3222933.72	40.001408	-104.704218
	943.00	1.85	142.71	942.63	-4115.37	18.45	-18.51	10.81	1.22	1244359.18	3222934.35	40.001406	-104.704215
	973.00	1.69	143.37	972.61	-4085.39	19.19	-19.25	11.37	0.54	1244358.44	3222934.92	40.001404	-104.704213
	1003.00	1.41	135.07	1002.60	-4055.40	19.80	-19.87	11.90	1.19	1244357.83	3222935.45	40.001402	-104.704211
	1033.00	1.09	145.73	1032.60	-4025.40	20.30	-20.37	12.32	1.31	1244357.34	3222935.87	40.001400	-104.704210
	1063.00	0.74	129.66	1062.59	-3995.41	20.65	-20.73	12.63	1.44	1244356.98	3222936.19	40.001400	-104.704209
	1093.00	0.76	114.58	1092.59	-3965.41	20.86	-20.93	12.96	0.66	1244356.78	3222936.52	40.001399	-104.704208
	1123.00	0.75	107.03	1122.59	-3935.41	21.00	-21.07	13.33	0.33	1244356.64	3222936.89	40.001399	-104.704206
	1153.00	0.76	101.67	1152.58	-3905.42	21.09	-21.17	13.71	0.24	1244356.55	3222937.27	40.001398	-104.704205
	1183.00	0.70	88.71	1182.58	-3875.42	21.13	-21.21	14.09	0.58	1244356.51	3222937.65	40.001398	-104.704204
	1213.00	0.42	81.91	1212.58	-3845.42	21.11	-21.19	14.38	0.96	1244356.54	3222937.94	40.001398	-104.704203
	1243.00	0.16	55.53	1242.58	-3815.42	21.07	-21.15	14.52	0.95	1244356.58	3222938.08	40.001398	-104.704202
	1273.00	0.33	51.20	1272.58	-3785.42	20.99	-21.07	14.62	0.57	1244356.66	3222938.19	40.001399	-104.704202
	1303.00	0.22	42.19	1302.58	-3755.42	20.89	-20.97	14.73	0.39	1244356.75	3222938.29	40.001399	-104.704201
	1333.00	0.27	26.94	1332.58	-3725.42	20.78	-20.87	14.80	0.27	1244356.86	3222938.36	40.001399	-104.704201
	1363.00	0.25	57.11	1362.58	-3695.42	20.68	-20.77	14.89	0.46	1244356.96	3222938.45	40.001399	-104.704201
	1393.00	0.42	34.36	1392.58	-3665.42	20.56	-20.64	15.00	0.71	1244357.09	3222938.56	40.001400	-104.704200
	1423.00	0.58	34.11	1422.58	-3635.42	20.34	-20.43	15.15	0.53	1244357.30	3222938.71	40.001400	-104.704200
	1453.00	0.32	66.01	1452.58	-3605.42	20.18	-20.27	15.31	1.17	1244357.47	3222938.87	40.001401	-104.704199
	1483.00	0.16	27.80	1482.58	-3575.42	20.11	-20.20	15.41	0.73	1244357.54	3222938.96	40.001401	-104.704199
	1513.00	0.30	308.97	1512.58	-3545.42	20.02	-20.11	15.37	1.04	1244357.62	3222938.92	40.001401	-104.704199
	1543.00	0.24	277.00	1542.58	-3515.42	19.97	-20.05	15.24	0.53	1244357.68	3222938.80	40.001401	-104.704199
	1573.00	0.17	7.92	1572.58	-3485.42	19.91	-20.00	15.19	0.99	1244357.73	3222938.74	40.001401	-104.704200
	1603.00	0.11	156.55	1602.58	-3455.42	19.90	-19.98	15.21	0.90	1244357.75	3222938.76	40.001402	-104.704200
	1633.00	0.14	62.43	1632.58	-3425.42	19.91	-19.99	15.25	0.61	1244357.74	3222938.80	40.001402	-104.704199
	1663.00	0.03	280.12	1662.58	-3395.42	19.89	-19.97	15.27	0.55	1244357.76	3222938.83	40.001402	-104.704199
Tie-In to latest survey	1685.00	0.26	225.51	1684.58	-3373.42	19.92	-20.01	15.23	1.11	1244357.72	3222938.79	40.001401	-104.704200
	1700.00	0.26	225.51	1699.58	-3358.42	19.97	-20.06	15.18	0.00	1244357.68	3222938.74	40.001401	-104.704200
PTB, Drop 1	1746.00	0.26	225.51	1745.57	-3312.43	20.12	-20.20	15.04	0.00	1244357.53	3222938.59	40.001401	-104.704200
DLS	1772.00	0.00	225.51	1771.57	-3286.43	20.16	-20.24	14.99	1.00	1244357.49	3222938.55	40.001401	-104.704200
	1800.00	0.00	225.51	1799.57	-3258.43	20.16	-20.24	14.99	0.00	1244357.49	3222938.55	40.001401	-104.704200
	1900.00	0.00	225.51	1899.57	-3158.43	20.16	-20.24	14.99	0.00	1244357.49	3222938.55	40.001401	-104.704200
	2000.00	0.00	225.51	1999.57	-3058.43	20.16	-20.24	14.99	0.00	1244357.49	3222938.55	40.001401	-104.704200
	2100.00	0.00	225.51	2099.57	-2958.43	20.16	-20.24	14.99	0.00	1244357.49	3222938.55	40.001401	-104.704200
	2200.00	0.00	225.51	2199.57	-2858.43	20.16	-20.24	14.99	0.00	1244357.49	3222938.55	40.001401	-104.704200
	2300.00	0.00	225.51	2299.57	-2758.43	20.16	-20.24	14.99	0.00	1244357.49	3222938.55	40.001401	-104.704200
	2400.00	0.00	225.51	2399.57	-2658.43	20.16	-20.24	14.99	0.00	1244357.49	3222938.55	40.001401	-104.704200
	2500.00	0.00	225.51	2499.57	-2558.43	20.16	-20.24	14.99	0.00	1244357.49	3222938.55	40.001401	-104.704200
	2600.00	0.00	225.51	2599.57	-2458.43	20.16	-20.24	14.99	0.00	1244357.49	3222938.55	40.001401	-104.704200
	2700.00	0.00	225.51	2699.57	-2358.43	20.16	-20.24	14.99	0.00	1244357.49	3222938.55	40.001401	-104.704200
	2800.00	0.00	225.51	2799.57	-2258.43	20.16	-20.24	14.99	0.00	1244357.49	3222938.55	40.001401	-104.704200
	2900.00	0.00	225.51	2899.57	-2158.43	20.16	-20.24	14.99	0.00	1244357.49	3222938.55	40.001401	-104.704200
	3000.00	0.00	225.51	2999.57	-2058.43	20.16	-20.24	14.99	0.00	1244357.49	3222938.55	40.001401	-104.704200
	3100.00	0.00	225.51	3099.57	-1958.43	20.16	-20.24	14.99	0.00	1244357.49	3222938.55	40.001401	-104.704200
	3200.00	0.00	225.51	3199.57	-1858.43	20.16	-20.24	14.99	0.00	1244357.49	3222938.55	40.001401	-104

Comments	MD (ft)	Incl (°)	Azim True (°)	TVD (ft)	TVDSS (ft)	VSEC (ft)	NS (ft)	EW (ft)	DLS (°/100ft)	Northing (ftUS)	Easting (ftUS)	Latitude (°)	Longitude (°)
Build 2 DLS	4800.00	0.00	225.51	4799.57	-258.43	20.16	-20.24	14.99	0.00	1243357.49	3222938.55	40.001401	-104.704200
	4900.00	0.00	225.51	4899.57	-158.43	20.16	-20.24	14.99	0.00	1243357.49	3222938.55	40.001401	-104.704200
	5000.00	0.00	225.51	4999.57	-58.43	20.16	-20.24	14.99	0.00	1243357.49	3222938.55	40.001401	-104.704200
	5100.00	0.00	225.51	5099.57	41.57	20.16	-20.24	14.99	0.00	1243357.49	3222938.55	40.001401	-104.704200
	5200.00	0.00	225.51	5199.57	141.57	20.16	-20.24	14.99	0.00	1243357.49	3222938.55	40.001401	-104.704200
	5200.43	0.00	225.51	5200.00	142.00	20.16	-20.24	14.99	0.00	1243357.49	3222938.55	40.001401	-104.704200
	5300.00	1.99	104.01	5299.55	241.55	20.57	-20.66	16.67	2.00	1243357.08	3222940.23	40.001400	-104.704194
	5400.00	3.99	104.01	5399.41	341.41	21.80	-21.93	21.74	2.00	1243355.86	3222945.31	40.001396	-104.704176
	5500.00	5.99	104.01	5499.03	441.03	23.86	-24.03	30.18	2.00	1243353.83	3222953.76	40.001390	-104.704146
	5600.00	7.99	104.01	5598.28	540.28	26.74	-26.98	41.99	2.00	1243350.99	3222965.60	40.001382	-104.704104
Hold	5700.00	9.99	104.01	5697.05	639.05	30.43	-30.76	57.15	2.00	1243347.35	3222980.80	40.001372	-104.704050
	5735.52	10.70	104.01	5731.99	673.99	31.94	-32.31	63.34	2.00	1243345.86	3222987.00	40.001368	-104.704028
	5800.00	10.70	104.01	5795.35	737.35	34.77	-35.21	74.96	0.00	1243343.06	3222998.64	40.001360	-104.703986
	5900.00	10.70	104.01	5893.61	835.61	39.16	-39.70	92.97	0.00	1243338.73	3223016.70	40.001347	-104.703922
	6000.00	10.70	104.01	5991.87	933.87	43.56	-44.20	110.99	0.00	1243334.40	3223034.75	40.001335	-104.703858
	6100.00	10.70	104.01	6090.13	1032.13	47.95	-48.69	129.01	0.00	1243330.06	3223052.81	40.001323	-104.703793
	6200.00	10.70	104.01	6188.39	1130.39	52.34	-53.19	147.03	0.00	1243325.73	3223070.87	40.001310	-104.703729
	6300.00	10.70	104.01	6286.65	1228.65	56.73	-57.68	165.05	0.00	1243321.40	3223088.92	40.001298	-104.703665
	6400.00	10.70	104.01	6384.91	1326.91	61.12	-62.18	183.06	0.00	1243317.06	3223106.98	40.001286	-104.703600
	6500.00	10.70	104.01	6483.17	1425.17	65.51	-66.67	201.08	0.00	1243312.73	3223125.04	40.001273	-104.703536
Build/Turn 8 DLS	6600.00	10.70	104.01	6581.43	1523.43	69.90	-71.17	219.10	0.00	1243308.40	3223143.09	40.001261	-104.703472
	6700.00	10.70	104.01	6679.69	1621.69	74.30	-75.66	237.12	0.00	1243304.06	3223161.15	40.001249	-104.703408
	6800.00	10.70	104.01	6777.95	1719.95	78.69	-80.16	255.13	0.00	124299.73	3223179.21	40.001236	-104.703343
	6842.47	10.70	104.01	6819.69	1761.69	80.55	-82.07	262.79	0.00	124297.89	3223186.88	40.001231	-104.703316
	6900.00	12.34	125.71	6876.08	1818.08	85.38	-86.95	272.97	8.00	124293.10	3223197.10	40.001218	-104.703280
	7000.00	17.83	148.61	6972.68	1914.68	104.62	-106.29	289.64	8.00	124273.91	3223213.95	40.001165	-104.703220
	7100.00	24.69	160.10	7065.86	2007.86	137.29	-139.05	304.75	8.00	124241.29	3223229.35	40.001075	-104.703166
	7200.00	32.06	166.69	7153.81	2095.81	182.75	-184.59	317.99	8.00	124195.87	3223242.99	40.000950	-104.703119
	7300.00	39.66	171.00	7234.81	2176.81	240.13	-242.03	329.11	8.00	124138.54	3223254.63	40.000792	-104.703079
	7400.00	47.37	174.11	7307.28	2249.28	308.30	-310.25	337.89	8.00	124070.40	3223264.02	40.000605	-104.703048
County Line 3107-10H LP	7500.00	55.14	176.53	7369.82	2311.82	385.93	-387.92	344.15	8.00	1243992.79	3223270.98	40.000392	-104.703025
	7600.00	62.96	178.52	7421.21	2363.21	471.52	-473.54	347.79	8.00	1243907.22	3223275.39	40.000156	-104.703013
	7700.00	70.80	180.26	7460.45	2402.45	563.40	-565.42	348.73	8.00	1243815.34	3223277.15	39.999904	-104.703009
	7800.00	78.65	181.84	7486.78	2428.78	659.79	-661.79	346.94	8.00	1243718.96	3223276.23	39.999640	-104.703016
	7900.00	86.52	183.33	7499.67	2441.67	758.79	-760.78	342.47	8.00	1243619.95	3223272.64	39.999368	-104.703032
	7939.15	89.60	183.90	7501.00	2443.00	797.85	-799.83	340.00	8.00	1243580.88	3223270.53	39.999261	-104.703040
	8000.00	89.60	182.68	7501.43	2443.43	858.62	-860.57	336.51	2.00	1243520.11	3223267.58	39.999094	-104.703053
	8100.00	89.60	180.68	7502.14	2444.14	958.58	-960.52	333.57	2.00	1243420.14	3223265.54	39.998820	-104.703063
	8163.08	89.60	179.42	7502.58	2444.58	1021.66	-1023.60	333.51	2.00	1243357.07	3223266.05	39.998647	-104.703064
	8200.00	89.60	179.42	7502.84	2444.84	1058.57	-1060.51	333.89	0.00	1243320.16	3223266.75	39.998545	-104.703062
Turn 2 DLS	8300.00	89.60	179.42	7503.55	2445.55	1158.56	-1160.50	334.90	0.00	1243220.18	3223268.66	39.998271	-104.703059
	8400.00	89.60	179.42	7504.25	2446.25	1258.54	-1260.50	335.91	0.00	1243120.21	3223270.56	39.997996	-104.703055
	8500.00	89.60	179.42	7504.96	2446.96	1358.53	-1360.49	336.92	0.00	1243020.23	3223272.47	39.997722	-104.703051
	8600.00	89.60	179.42	7505.67	2447.67	1458.51	-1460.48	337.92	0.00	1242920.26	3223274.38	39.997447	-104.703048
	8700.00	89.60	179.42	7506.37	2448.37	1558.50	-1560.47	338.93	0.00	1242820.28	3223276.29	39.997173	-104.703044
	8800.00	89.60	179.42	7507.08	2449.08	1658.48	-1660.47	339.94	0.00	1242720.30	3223278.19	39.996898	-104.703041
	8900.00	89.60	179.42	7507.78	2449.78	1758.47	-1760.46	340.95	0.00	1242620.33	3223280.10	39.996624	-104.703037
	9000.00	89.60	179.42	7508.49	2450.49	1858.45	-1860.45	341.96	0.00	1242520.35	3223282.01	39.996349	-104.703033
	9100.00	89.60	179.42	7509.20	2451.20	1958.44	-1960.44	342.97	0.00	1242420.38	3223283.91	39.996075	-104.703030
	9200.00	89.60	179.42	7509.90	2451.90	2058.42	-2060.44	343.98	0.00	1242320.40	3223285.82	39.995800	-104.703026
WP1 , Build 2 DLS Hold	9300.00	89.60	179.42	7510.61	2452.61	2158.41	-2160.43	344.99	0.00	1242220.43	3223287.73	39.995526	-104.703023
	9400.00	89.60	179.42	7511.31	2453.31	2258.39	-2260.42	346.00	0.00	1242120.45	3223289.64	39.995251	-104.703019
	9500.00	89.60	179.42	7512.02	2454.02	2358.38	-2360.41	347.01	0.00	1242020.47	3223291.54	39.994977	-104.703015
	9600.00	89.60	179.42	7512.73	2454.73	2458.36	-2460.41	348.02	0.00	1241920.50	3223293.45	39.994702	-104.703012
	9700.00	89.60	179.42	7513.43	2455.43	2558.35	-2560.40	349.03	0.00	1241820.52	3223295.36	39.994428	-104.703008
	9800.00	89.60	179.42	7514.14	2456.14	2658.33	-2660.39	350.04	0.00	1241720.55	3223297.26	39.994153	-104.703005
	9900.00	89.60	179.42	7514.84	2456.84	2758.32	-2760.38	351.05	0.00	1241620.57	3223299.17	39.993879	-104.703001
	10000.00	89.60	179.42	7515.55	2457.55	2858.30	-2860.38	352.06	0.00	1241520.60	3223301.08	39.993604	-104.702997
	10100.00	89.60	179.42	7516.26	2458.26	2958.29	-2960.37	353.07	0.00	1241420.62	3223302.99	39.993330	-104.702994
	10200.00	89.60	179.42	7516.96	2458.96	3058.27	-3060.36	354.08	0.00	1241320.64	3223304.89	39.993055	-104.702990
WP2 , Drop 2 DLS Hold	10300.00	89.60	179.42	7517.67	2459.67	3158.26	-3160.35	355.09	0.00	1241220.67	3223306.80	39.992781	-104.702987
	10400.00												

Comments	MD (ft)	Incl (°)	Azim True (°)	TVD (ft)	TVDSS (ft)	VSEC (ft)	NS (ft)	EW (ft)	DLS (°/100ft)	Northing (ftUS)	Easting (ftUS)	Latitude (°)	Longitude (°)
	15200.00	89.69	180.52	7525.82	2467.82	8057.68	-8060.03	385.26	0.00	1236321.63	3223380.93	39.979331	-104.702879
	15300.00	89.69	180.52	7526.37	2468.37	8157.68	-8160.03	384.36	0.00	1236221.64	3223380.92	39.979056	-104.702882
	15400.00	89.69	180.52	7526.92	2468.92	8257.67	-8260.02	383.45	0.00	1236121.64	3223380.92	39.978782	-104.702886
	15500.00	89.69	180.52	7527.47	2469.47	8357.67	-8360.01	382.55	0.00	1236021.65	3223380.91	39.978507	-104.702889
	15600.00	89.69	180.52	7528.02	2470.02	8457.67	-8460.01	381.65	0.00	1235921.65	3223380.91	39.978233	-104.702892
	15700.00	89.69	180.52	7528.57	2470.57	8557.67	-8560.00	380.74	0.00	1235821.66	3223380.90	39.977958	-104.702895
	15800.00	89.69	180.52	7529.12	2471.12	8657.67	-8660.00	379.84	0.00	1235721.66	3223380.89	39.977684	-104.702899
	15900.00	89.69	180.52	7529.67	2471.67	8757.66	-8759.99	378.93	0.00	1235621.67	3223380.89	39.977409	-104.702902
	16000.00	89.69	180.52	7530.22	2472.22	8857.66	-8859.99	378.03	0.00	1235521.67	3223380.88	39.977135	-104.702905
	16100.00	89.69	180.52	7530.76	2472.76	8957.66	-8959.98	377.13	0.00	1235421.68	3223380.87	39.976860	-104.702908
	16200.00	89.69	180.52	7531.31	2473.31	9057.66	-9059.97	376.22	0.00	1235321.68	3223380.87	39.976586	-104.702911
	16300.00	89.69	180.52	7531.86	2473.86	9157.66	-9159.97	375.32	0.00	1235221.69	3223380.86	39.976311	-104.702915
	16400.00	89.69	180.52	7532.41	2474.41	9257.65	-9259.96	374.42	0.00	1235121.69	3223380.85	39.976037	-104.702918
	16500.00	89.69	180.52	7532.96	2474.96	9357.65	-9359.96	373.51	0.00	1235021.70	3223380.85	39.975762	-104.702921
	16600.00	89.69	180.52	7533.51	2475.51	9457.65	-9459.95	372.61	0.00	1234921.70	3223380.84	39.975488	-104.702924
	16700.00	89.69	180.52	7534.06	2476.06	9557.65	-9559.95	371.70	0.00	1234821.71	3223380.84	39.975213	-104.702928
	16800.00	89.69	180.52	7534.61	2476.61	9657.65	-9659.94	370.80	0.00	1234721.71	3223380.83	39.974939	-104.702931
	16900.00	89.69	180.52	7535.16	2477.16	9757.64	-9759.94	369.90	0.00	1234621.72	3223380.82	39.974664	-104.702934
	17000.00	89.69	180.52	7535.71	2477.71	9857.64	-9859.93	368.99	0.00	1234521.72	3223380.82	39.974390	-104.702937
	17100.00	89.69	180.52	7536.26	2478.26	9957.64	-9959.92	368.09	0.00	1234421.73	3223380.81	39.974115	-104.702941
	17200.00	89.69	180.52	7536.81	2478.81	10057.64	-10059.92	367.19	0.00	1234321.74	3223380.80	39.973841	-104.702944
County Line 3107-10H BHL	17234.97	89.69	180.52	7537.00	2479.00	10092.61	-10094.89	366.87	0.00	1234286.77	3223380.80	39.973745	-104.702945
	17300.00	89.69	180.52	7537.36	2479.36	10157.64	-10159.91	366.28	0.00	1234221.74	3223380.80	39.973566	-104.702947
County Line 3107-10H BHL+100ft	17334.97	89.69	180.52	7537.55	2479.55	10192.60	-10194.88	365.97	0.00	1234186.77	3223380.79	39.973471	-104.702948

Survey Type: Def Plan

Survey Error Model: ISCWSA Rev 3 *** 3-D 97.071% Confidence 3.0000 sigma
Survey Program:

Description	Part	MD From (ft)	MD To (ft)	EOU Freq (ft)	Hole Size (in)	Casing Diameter (in)	Expected Max Inclination (deg)	Survey Tool Type	Borehole / Survey
	1	0.000	21.000	Act Stns	13.500	9.625		B001Mb_MWD+HRGM-Depth Only	Original Hole / County Line 3107- 10H MWD 0' to update
	1	21.000	1685.000	Act Stns	13.500	9.625		B001Mb_MWD+HRGM	Original Hole / County Line 3107- 10H MWD 0' to update
	1	1685.000	2342.425	1/100.000	13.500	9.625		B001Mb_MWD+HRGM	Original Hole / County Line 3107- 10H R1 mdv 27Oct21
	1	2342.425	17334.970	1/100.000	8.500	5.500		B001Mb_MWD+HRGM	Original Hole / County Line 3107- 10H R1 mdv 27Oct21