

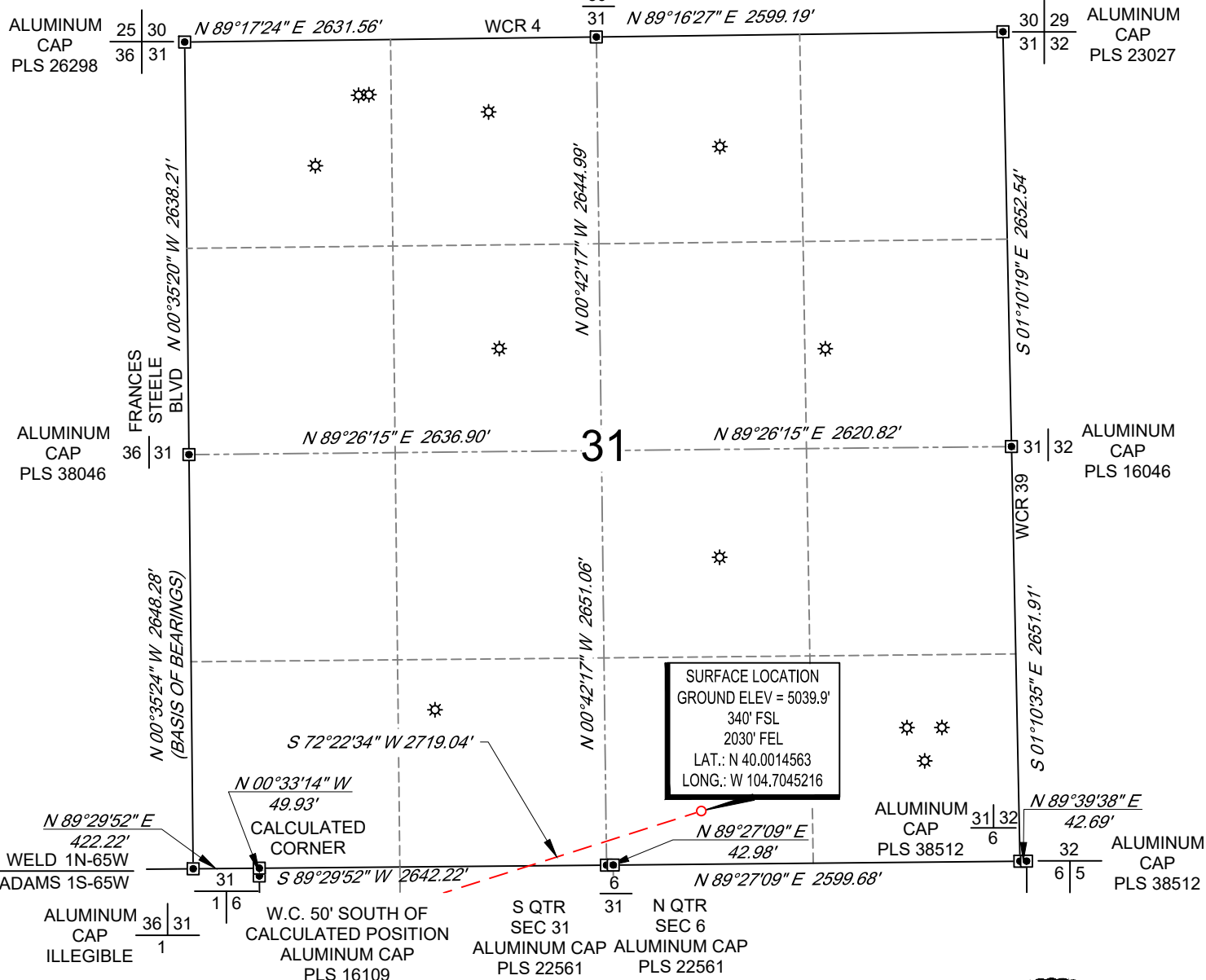
SCALE: 1" = 1000'  
0' 500' 1000'

# WELL LOCATION MAP

SHL SW/4 SE/4, SECTION 31, TOWNSHIP 1-N, RANGE 65-W  
LPL LOT 3, SECTION 6, TOWNSHIP 1-S, RANGE 65-W  
BPZ LOT 2, SECTION 7, TOWNSHIP 1-S, RANGE 65-W  
BHL LOT 2, SECTION 7, TOWNSHIP 1-S, RANGE 65-W  
WELD AND ADAMS COUNTY, COLORADO



ALUMINUM  
CAP  
PLS 26959  
30



## NOTES

1. Horizontal (NAD 83) and vertical (NAVD 88) datum is based on the Trimble VRS Network or OPUS Solution.
2. All directions, distances, and dimensions shown hereon are based on coordinates from the "Colorado coordinate system of 1983 north zone" (article 52 of title 38, C.R.S.).
3. All section line dimensions shown hereon are based on field measurements of existing monuments and/or physical evidence found in the field unless otherwise indicated.
4. Physical features shown hereon are for graphical representation only.
5. See Form 2A, if applicable for visible improvements within 500' of wellhead.
6. Distances to nearest section lines are measured perpendicularly.
7. This is not a land survey nor land survey plat.

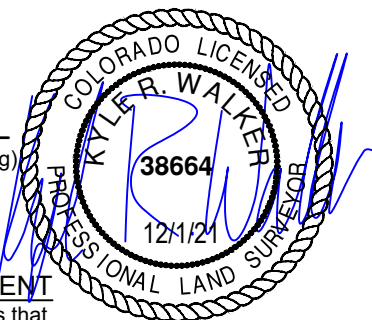
PDOP Reading: 1.5 Instrument Operator: **Eric Purcell**  
Date Surveyed: **04/20/2018**

## LEGEND

- ★ Well Head (Existing)
- Found Survey Monument
- ⊙ Calculated Corner

## SURVEYOR'S STATEMENT

The undersigned hereby states that the well location shown hereon was staked on the ground based on existing monumentation and/or physical evidence found in the field and is correct to the best of my knowledge, information and belief.



VERDAD RESOURCES  
COUNTY LINE 3107-05H  
JOB NO. 116941

JLS	07/12/2018	REVISION:	
SHEET :	1 OF 3	INT	DATE
FILE:LO_COUNTY_LINE_3107_05H_REV4	SW	12/1/2021	

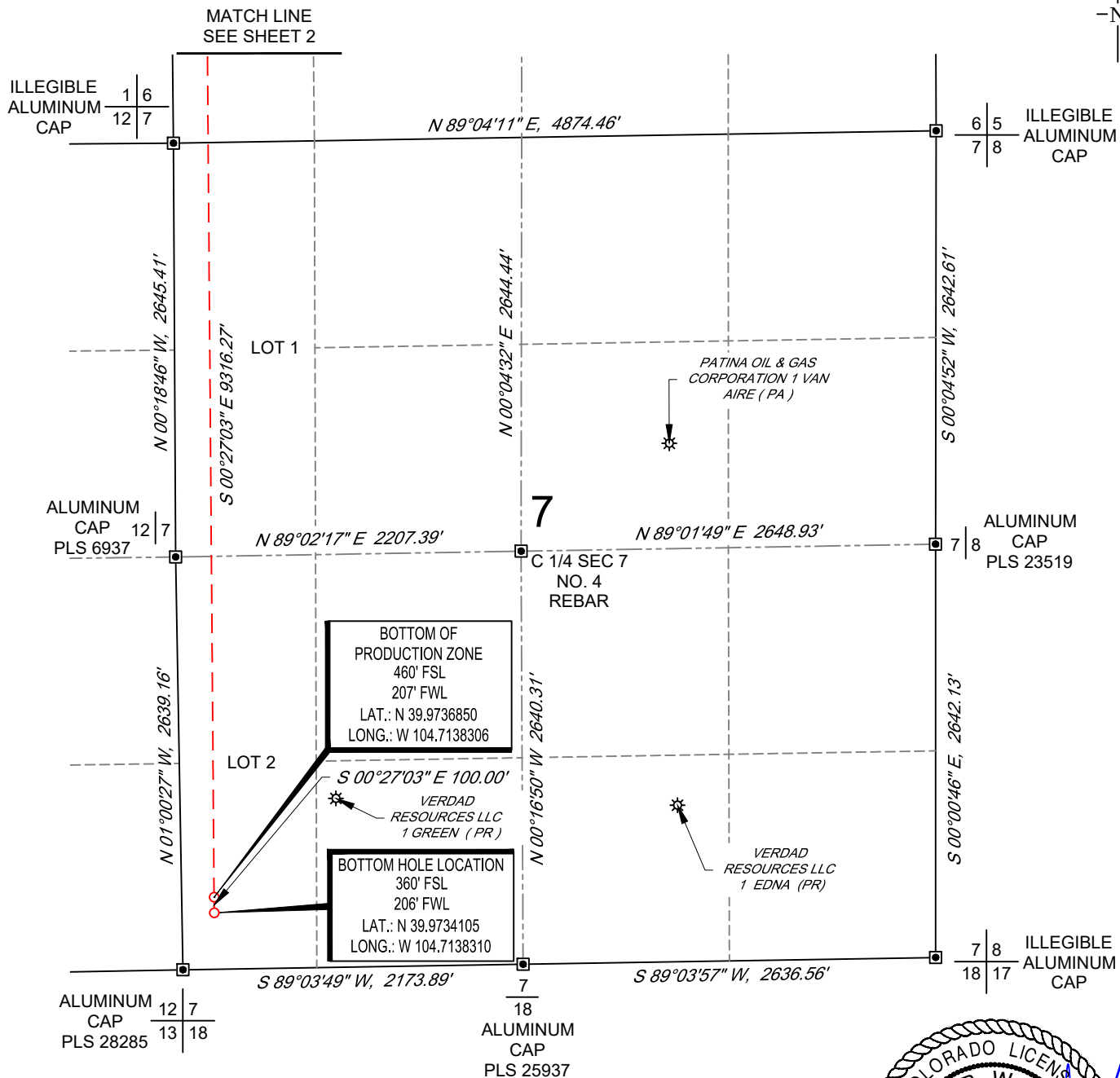




SCALE: 1" = 1000'  
0' 500' 1000'

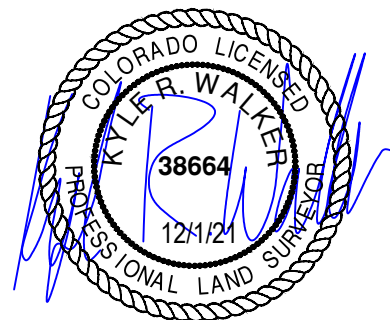
# BOTTOM HOLE MAP

SHL SW/4 SE/4, SECTION 31, TOWNSHIP 1-N, RANGE 65-W  
LPL LOT 3, SECTION 6, TOWNSHIP 1-S, RANGE 65-W  
BPZ LOT 2, SECTION 7, TOWNSHIP 1-S, RANGE 65-W  
BHL LOT 2, SECTION 7, TOWNSHIP 1-S, RANGE 65-W  
WELD AND ADAMS COUNTY, COLORADO



## LEGEND

- ⊛ Well Head (Existing)
- ▣ Found Survey
- ⊙ Monument
- ⊙ Calculated Corner



VERDAD RESOURCES  
COUNTY LINE 3107-05H  
JOB NO. 116941

MML 04/25/2018

SHEET : 3 OF 3

FILE:LO\_COUNTY\_LINE\_3107\_05H\_REV4

REVISION:

INT DATE

SW 12/1/2021

