



Verdad Resources LLC

Schlumberger

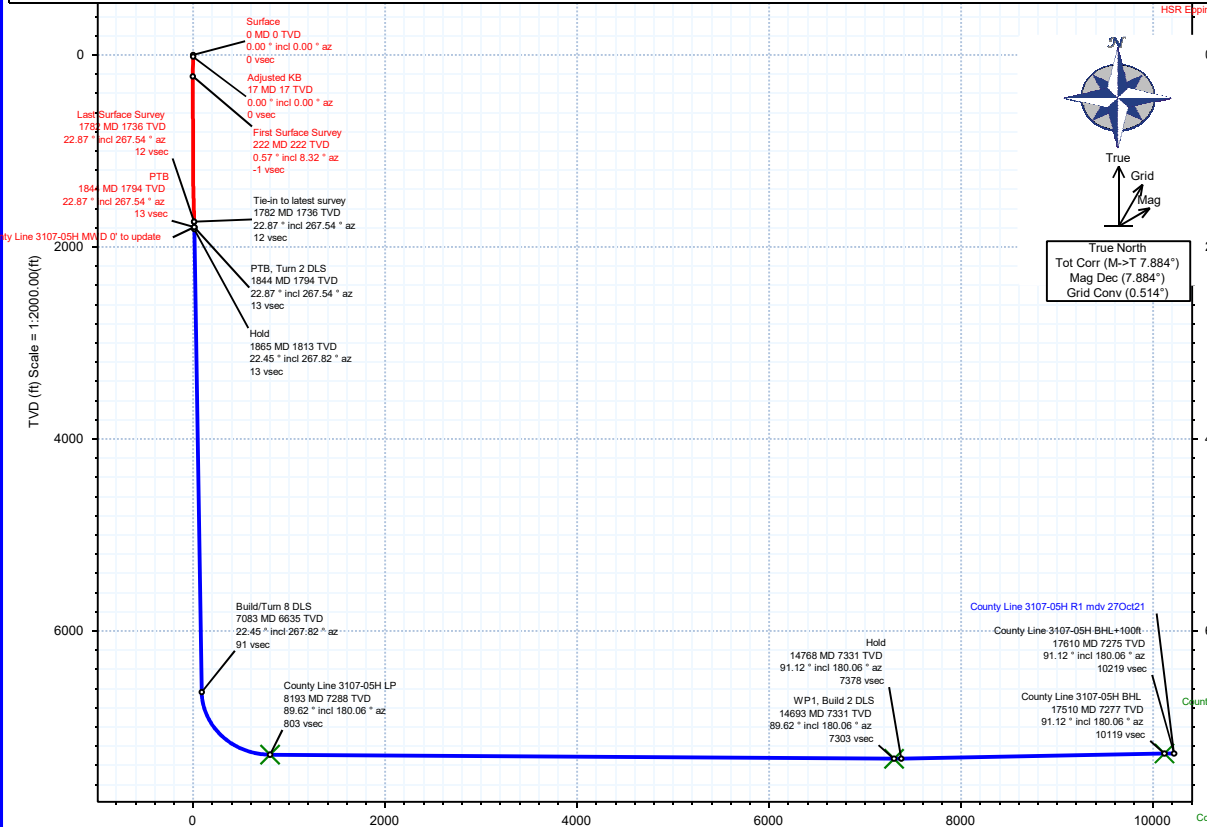
Rev 1

Borehole:	Well:	Field:	Structure:
Original Hole	County Line 3107-05H	CO, Weld County (NAD 83 NZ) - 2019	Verdad Resources 31-01N-65W (County Line Pad)

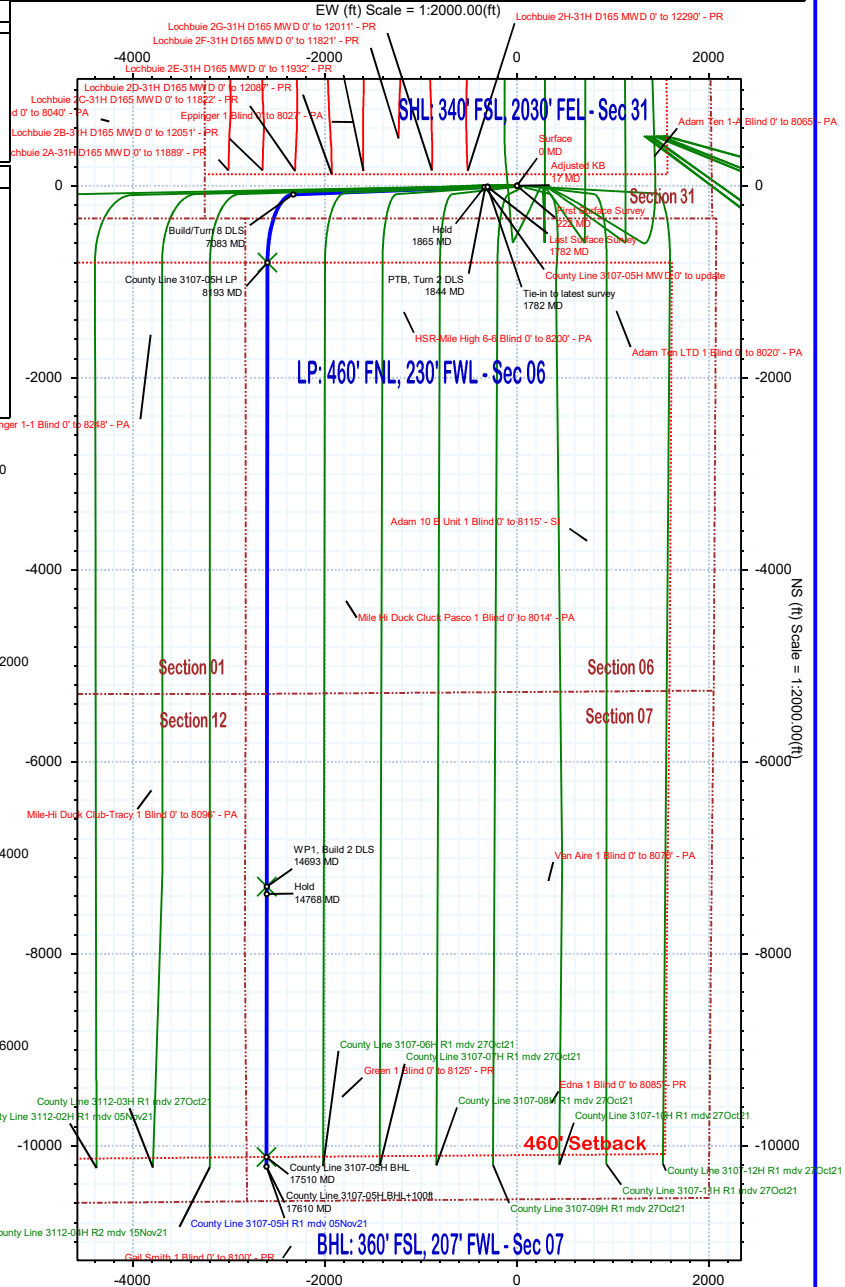
Gravity & Magnetic Parameters	Surface Location	NAD83 Colorado State Plane, Northern Zone, US Feet	Miscellaneous
Model: HDGM 2021	Lat: N 40 0 5.24	Northings: 1244376.89ftUS	Slot: County Line 3107-05H
Dip: 66.236°	Lon: W 104 42 16.28	Grid Conv: 0.514°	TVD Ref: KB 21ft(5058ft above MSL)
Date: 15-Nov-2021	Eastings: 3222848.38ftUS	Scale Fact: 0.99996626	Plan: County Line 3107-05H R1 mdy 05Nov21
MagDec: 7.884°	Gravity FS: 998.982mgn (9.80665 Based)		

Target Name	Target Description	Latitude	Longitude	Northings	Eastings	TVD	VSec	N(+)/S(-)	E(+)/W(-)
County Line Pad - Sec 31-30 - CL		N 40 0 5.24	W 104 42 16.28	1244376.89	3222848.38	5058.00	0.00	0.00	0.00
County Line Pad - Sec 01-12 - CL		N 40 0 5.24	W 104 42 17.05	1244376.31	3222798.38	5058.00	0.10	-0.04	-60.01
County Line Pad - Sec 06-07 - SB		N 40 0 5.24	W 104 42 16.28	1244376.39	3222848.38	5058.00	0.00	0.00	0.00
County Line Pad - Sec 01-12 - SB		N 40 0 5.24	W 104 42 17.05	1244376.31	3222798.38	5058.00	0.10	-0.04	-60.01
County Line Pad - Sec 31-30 - SB		N 40 0 5.24	W 104 42 13.00	1244379.40	3223103.61	5058.00	-0.49	0.22	255.25
County Line Pad - Sec 01-12 - 460' SB		N 40 0 5.24	W 104 42 17.05	1244376.31	3222798.38	5058.00	0.10	-0.04	-60.01
County Line Pad - Sec 31-30-06-07		N 40 0 5.24	W 104 42 16.28	1244376.89	3222848.38	5058.00	0.00	0.00	0.00
County Line 3107-05H BHL		N 39 58 26.37	W 104 42 49.79	1234297.68	3220330.23	7277.00	10119.30	-10116.57	-2609.05
County Line 3107-05H LP		N 39 58 27.34	W 104 42 49.97	1234297.68	3220330.23	7285.00	802.70	-799.86	-2598.80
County Line 3107-05H WP1		N 39 58 53.10	W 104 42 49.75	1237054.08	3220308.11	7331.00	7302.70	-7299.98	-2605.95

Critical Point	MD	INCL	AZIM	TVD	VSEC	N(+)/S(-)	E(+)/W(-)	DLS
Tie-in to latest survey	1782.00	22.87	267.54	1736.42	11.64	-11.32	-306.75	
PTB, Turn 2 DLS	1844.00	22.87	267.54	1793.55	12.70	-12.35	-330.83	0.00
Hold	1865.49	22.45	267.82	1813.38	13.04	-12.69	-339.10	2.00
Build/Turn 8 DLS	7082.92	22.45	267.82	6635.26	90.98	-88.54	-2330.38	0.00
County Line 3107-05H LP	8192.83	89.62	180.06	7288.00	802.70	-799.98	-2598.80	8.00
WP1, Build 2 DLS	14692.97	89.62	180.06	7331.00	7302.70	-7299.98	-2605.95	0.00
Hold	14767.83	91.12	180.06	7330.52	7377.56	-7374.84	-2606.03	2.00
County Line 3107-05H BHL	17510.09	91.12	180.06	7277.00	10119.30	-10116.57	-2609.05	0.00
County Line 3107-05H BHL+100ft	17610.09	91.12	180.06	7275.05	10219.28	-10216.55	-2609.16	0.00



Vertical Section (ft) Azim = 180.06° Scale = 1:2000.00(ft) Origin = 0N/-S, 0E/-W



County Line 3107-05H R1 mdv 05Nov21 Proposal Geodetic Report

(Def Plan)

Report Date: November 17, 2021 - 11:01 AM
Client: Verdaz Resources LLC
Field: CO, Weld County (NAD 83 NZ) - 2019
Structure / Slot: Verdaz Resources 31-01N-65W (County Line Pad) / County Line 3107-05H
Well: County Line 3107-05H
Borehole: Original Hole
UWI / API#: Unknown / 05-123-51166
Survey Name: County Line 3107-05H R1 mdv 05Nov21
Survey Date: November 15, 2021
Tort / AHD / DDI / ERD Ratio: 117.965 ° / 12558.536 ft / 6.551 / 1.713
Coordinate Reference System: NAD83 Colorado State Plane, Northern Zone, US Feet
Location Lat / Long: N 40° 0' 5.24268", W 104° 42' 16.27776"
Location Grid N/E Y/X: N 1244376.885 ftUS, E 3222848.382 ftUS
CRS Grid Convergence Angle: 0.5140 °
Grid Scale Factor: 0.99996626
Version / Patch: 2.10.824.0

Survey / DLS Computation: Minimum Curvature / Lubinski
Vertical Section Azimuth: 180.060 ° (True North)
Vertical Section Origin: 0.000 ft, 0.000 ft
TVD Reference Datum: KB 21ft
TVD Reference Elevation: 5058.000 ft above MSL
Seabed / Ground Elevation: 5037.000 ft above MSL
Magnetic Declination: 7.884 °
Total Gravity Field Strength: 998.9824mgn (9.80665 Based)
Gravity Model: GARM
Total Magnetic Field Strength: 51642.097 nT
Magnetic Dip Angle: 66.236 °
Declination Date: November 15, 2021
Magnetic Declination Model: HDGM 2021
North Reference: True North
Grid Convergence Used: 0.0000 °
Total Corr Mag North->True North: 7.8838 °
Local Coord Referenced To: Well Head

Comments	MD (ft)	Incl (°)	Azim True (°)	TVD (ft)	TVDSS (ft)	VSEC (ft)	NS (ft)	EW (ft)	DLS (°/100ft)	Northing (ftUS)	Easting (ftUS)	Latitude (°)	Longitude (°)
Surface	0.00	0.00	0.00	0.00	-5058.00	0.00	0.00	0.00	N/A	1244376.89	3222848.38	40.001456	-104.704522
Adjusted KB	17.00	0.00	0.00	17.00	-5041.00	0.00	0.00	0.00	0.00	1244376.89	3222848.38	40.001456	-104.704522
First Surface													
Survey	222.00	0.57	8.32	222.00	-4836.00	-1.01	1.01	0.15	0.28	1244377.90	3222848.52	40.001459	-104.704521
	252.00	0.24	335.31	252.00	-4806.00	-1.21	1.21	0.14	1.30	1244378.10	3222848.51	40.001460	-104.704521
	283.00	0.38	33.62	283.00	-4775.00	-1.36	1.36	0.17	1.05	1244378.24	3222848.54	40.001460	-104.704521
	311.00	0.23	330.53	311.00	-4747.00	-1.48	1.48	0.20	1.23	1244378.37	3222848.57	40.001460	-104.704521
	343.00	0.34	324.30	342.99	-4715.01	-1.62	1.62	0.11	0.36	1244378.50	3222848.48	40.001461	-104.704521
	373.00	0.29	300.92	372.99	-4685.01	-1.73	1.73	-0.01	0.46	1244378.61	3222848.36	40.001461	-104.704522
	403.00	0.59	303.32	402.99	-4655.01	-1.85	1.85	-0.20	1.00	1244378.74	3222848.16	40.001461	-104.704522
	433.00	1.25	279.89	432.99	-4625.01	-1.99	1.99	-0.65	2.49	1244378.87	3222847.71	40.001462	-104.704524
	463.00	2.08	272.32	462.98	-4595.02	-2.07	2.07	-1.52	2.86	1244378.94	3222846.84	40.001462	-104.704527
	493.00	2.67	267.15	492.95	-4565.05	-2.06	2.06	-2.76	2.09	1244378.92	3222845.60	40.001462	-104.704531
	523.00	3.34	265.39	522.91	-4535.09	-1.95	1.95	-4.33	2.25	1244378.80	3222844.03	40.001462	-104.704537
	553.00	3.66	261.35	552.85	-4505.15	-1.73	1.74	-6.15	1.35	1244378.57	3222842.22	40.001461	-104.704544
	583.00	4.03	260.73	582.79	-4475.21	-1.42	1.43	-8.14	1.24	1244378.24	3222840.23	40.001460	-104.704551
	613.00	4.34	259.49	612.71	-4445.29	-1.04	1.05	-10.29	1.08	1244377.84	3222838.08	40.001459	-104.704558
	643.00	4.42	260.59	642.62	-4415.38	-0.64	0.65	-12.55	0.39	1244377.43	3222835.82	40.001458	-104.704566
	673.00	5.06	262.79	672.52	-4385.48	-0.28	0.30	-15.00	2.22	1244377.05	3222833.38	40.001457	-104.704575
	703.00	5.61	268.80	702.39	-4355.61	-0.03	0.05	-17.78	2.21	1244376.78	3222830.61	40.001456	-104.704585
	733.00	6.24	268.73	732.23	-4325.77	0.09	-0.07	-20.87	2.20	1244376.63	3222827.51	40.001456	-104.704596
	763.00	6.72	268.84	762.03	-4295.97	0.16	-0.14	-24.26	1.60	1244376.53	3222824.13	40.001456	-104.704608
	793.00	7.24	266.78	791.81	-4266.19	0.31	-0.28	-27.90	1.92	1244376.35	3222820.49	40.001456	-104.704621
	823.00	7.84	265.80	821.55	-4236.45	0.57	-0.54	-31.83	2.05	1244376.06	3222816.56	40.001455	-104.704635
	853.00	8.12	267.08	851.26	-4206.74	0.83	-0.79	-35.98	1.11	1244375.77	3222812.41	40.001454	-104.704650
	883.00	8.69	266.42	880.94	-4177.06	1.09	-1.04	-40.36	1.93	1244375.48	3222808.03	40.001453	-104.704666
	913.00	9.16	267.82	910.58	-4147.42	1.32	-1.28	-45.01	1.73	1244375.20	3222803.39	40.001453	-104.704682
	943.00	9.74	268.18	940.17	-4117.83	1.46	-1.40	-49.93	2.07	1244375.03	3222798.46	40.001452	-104.704700
	973.00	10.32	270.54	969.71	-4088.29	1.47	-1.41	-55.16	2.09	1244374.98	3222793.24	40.001452	-104.704718
	1003.00	10.87	271.75	999.20	-4058.80	1.37	-1.30	-60.67	1.98	1244375.04	3222787.73	40.001453	-104.704738
	1033.00	11.37	272.30	1028.63	-4029.37	1.17	-1.10	-66.45	1.70	1244375.19	3222781.94	40.001453	-104.704759
	1063.00	12.06	270.61	1058.01	-3999.99	1.02	-0.95	-72.54	2.57	1244375.29	3222775.85	40.001454	-104.704781
	1093.00	12.81	270.00	1087.31	-3970.69	1.00	-0.91	-79.00	2.54	1244375.26	3222769.39	40.001454	-104.704804
	1123.00	13.55	271.24	1116.52	-3941.48	0.93	-0.84	-85.84	2.64	1244375.28	3222762.55	40.001454	-104.704828
	1153.00	14.22	270.67	1145.64	-3912.36	0.81	-0.72	-93.04	2.28	1244375.33	3222755.35	40.001454	-104.704854
	1183.00	15.00	269.13	1174.67	-3883.33	0.84	-0.73	-100.61	2.90	1244375.25	3222747.79	40.001454	-104.704881
	1213.00	15.61	268.48	1203.60	-3854.40	1.01	-0.90	-108.52	2.11	1244375.01	3222739.87	40.001454	-104.704909
	1243.00	16.25	268.62	1232.45	-3825.55	1.16	-1.03	-116.76	2.37	1244374.80	3222731.64	40.001453	-104.704938
	1273.00	16.94	268.26	1261.20	-3796.80	1.25	-1.12	-125.32	2.33	1244374.64	3222723.08	40.001453	-104.704969
	1303.00	17.69	268.14	1289.84	-3768.16	1.46	-1.32	-134.25	2.74	1244374.36	3222714.15	40.001453	-104.705001
	1333.00	18.36	267.32	1318.37	-3739.63	1.84	-1.69	-143.53	2.39	1244373.91	3222704.88	40.001452	-104.705034
	1363.00	18.93	266.37	1346.80	-3711.20	2.38	-2.22	-153.10	2.15	1244373.29	3222695.31	40.001450	-104.705068
	1393.00	19.53	265.76	1375.12	-3682.88	3.07	-2.90	-162.96	2.11	1244372.52	3222685.46	40.001448	-104.705103
	1423.00	20.15	265.78	1403.34	-3654.66	3.83	-3.65	-171.11	2.07	1244371.68	3222675.32	40.001446	-104.705140
	1453.00	20.78	266.01	1431.45	-3626.55	4.59	-4.40	-183.57	2.12	1244370.84	3222664.86	40.001444	-104.705177
	1483.00	21.28	266.03	1459.45	-3598.55	5.35	-5.15	-194.31	1.67	1244369.99	3222654.13	40.001442	-104.705215
	1513.00	21.98	266.07	1487.34	-3570.66	6.13	-5.91	-205.35	2.33	1244369.13	3222643.10	40.001440	-104.705255
	1543.00	21.89	265.85	1515.16	-3542.84	6.93	-6.70	-216.53	0.41	1244368.24	3222631.93	40.001438	-104.705294
	1573.00	21.64	265.74	1543.03	-3514.97	7.75	-7.52	-227.62	0.84	1244367.33	3222620.85	40.001436	-104.705334
	1603.00	21.73	266.28	1570.90	-3487.10	8.54	-8.29	-238.68	0.73	1244366.46	3222609.80	40.001434	-104.705374
	1633.00	22.11	266.95	1598.73	-3459.27	9.21	-8.95	-249.86	1.52	1244365.70	3222598.62	40.001432	-104.705413
	1663.00	22.05	267.42	1626.53	-3431.47	9.77	-9.50	-261.12	0.62	1244365.04	3222587.37	40.001430	-104.705454
	1693.00	22.20	267.64	1654.32	-3403.68	10.27	-9.99	-272.41	0.57	1244364.45	3222576.08	40.001429	-104.705494
	1723.00	22.67	267.95	1682.05	-3375.95	10.73	-10.43	-283.85	1.62	1244363.91	3222564.65	40.001428	-104.705535
	1753.00	22.95	267.80	1709.71	-3348.29	11.17	-10.86	-295.47	0.95	1244363.38	3222553.03	40.001426	-104.705576
Tie-in to latest survey	1782.00	22.87	267.54	1736.42	-3321.58	11.64	-11.32	-306.75	0.44	1244362.82	3222541.76	40.001425	-104.705617
	1800.00	22.87	267.54	1753.01	-3304.99	11.95	-11.62	-313.74	0.00	1244362.45	3222534.77	40.001424	-104.705641
PTB, Turn 2 DLS	1844.00	22.87	267.54	1793.55	-3264.45	12.70	-12.35	-330.83	0.00	1244361.57	3222517.69	40.001422	-104.705702
Hold	1865.49	22.45	267.82	1813.38	-3244.62	13.04	-12.69	-339.10	2.00	1244361.16	3222509.42	40.001421	-104.705732
	1900.00	22.45	267.82	1845.27	-3212.73	13.56	-13.19	-352.27	0.00	1244360.54	3222496.26	40.001420	-104.705779
	2000.00	22.45	267.82	1937.69	-3120.31	15.05	-14.64	-390.44	0.00	1244358.74	3222458.11	40.001416	-104.705915
	2100.00	22.45	267.82	2030.11	-3027.89	16.55	-16.10	-428.60	0.00	1244356.94	3222419.96	40.001412	-104.706051
	2200.00	22.45	267.82	2122.53	-2935.47	18.04	-17.55	-466.77	0.00	1244355.15	3222381.81	40.001408	-104.706188
	2300.00	22.45	267.82	2214.95	-2843.05	19.53	-19.01	-504.93	0.00	1244353.35	3222343.66	40.001404	-104.706324
	2400.00	22.45	267.82	2307.37	-2750.63	21.03	-20.46	-543.10	0.00	1244351.56	3222305.51	40.001400	-104.706460
	2500.00	22.45	267.82	2399.78	-2658.22	22.52	-21.91	-581.27	0.00	1244349.76	3222267.36	40.001396	-104.706596
	2600.00	22.45	267.82	2492.20	-2565.80	24.02	-23.37	-619.43	0.00	1244347.96	3222229.21	40.001392	-104.706733
	2700.00	22.45	267.82	2584.62	-2473.38	25.51	-24.82	-657.60	0.00	1244346.17	3222191.06	40.001388	-104.706869
	2800.00	22.45	267.82	2677.04	-2380.96	27.00	-26.27	-695.76	0.00	1244344.37	3222152.91	40.001384	-104.707005</

Comments	MD (ft)	Incl (°)	Azim True (°)	TVD (ft)	TVDSS (ft)	VSEC (ft)	NS (ft)	EW (ft)	DLS (°/100ft)	Northing (ftUS)	Easting (ftUS)	Latitude (°)	Longitude (°)
	4500.00	22.45	267.82	4248.16	-809.84	52.40	-50.99	-1344.59	0.00	1244313.84	3221504.36	40.001316	-104.709321
	4600.00	22.45	267.82	4340.58	-717.42	53.89	-52.44	-1382.75	0.00	1244312.04	3221466.21	40.001312	-104.709457
	4700.00	22.45	267.82	4433.00	-625.00	55.39	-53.90	-1420.92	0.00	1244310.24	3221428.06	40.001308	-104.709593
	4800.00	22.45	267.82	4525.42	-532.58	56.88	-55.35	-1459.08	0.00	1244308.45	3221389.91	40.001304	-104.709730
	4900.00	22.45	267.82	4617.84	-440.16	58.37	-56.81	-1497.25	0.00	1244306.65	3221351.76	40.001300	-104.709866
	5000.00	22.45	267.82	4710.25	-347.75	59.87	-58.26	-1535.42	0.00	1244304.86	3221313.61	40.001296	-104.710002
	5100.00	22.45	267.82	4802.67	-255.33	61.36	-59.71	-1573.58	0.00	1244303.06	3221275.46	40.001292	-104.710138
	5200.00	22.45	267.82	4895.09	-162.91	62.86	-61.17	-1611.75	0.00	1244301.26	3221237.31	40.001288	-104.710275
	5300.00	22.45	267.82	4987.51	-70.49	64.35	-62.62	-1649.91	0.00	1244299.47	3221199.16	40.001284	-104.710411
	5400.00	22.45	267.82	5079.93	21.93	65.84	-64.08	-1688.08	0.00	1244297.67	3221161.01	40.001280	-104.710547
	5500.00	22.45	267.82	5172.35	114.35	67.34	-65.53	-1726.25	0.00	1244295.88	3221122.86	40.001276	-104.710683
	5600.00	22.45	267.82	5264.77	206.77	68.83	-66.98	-1764.41	0.00	1244294.08	3221084.70	40.001272	-104.710820
	5700.00	22.45	267.82	5357.19	299.19	70.32	-68.44	-1802.58	0.00	1244292.28	3221046.55	40.001268	-104.710956
	5800.00	22.45	267.82	5449.61	391.61	71.82	-69.89	-1840.74	0.00	1244290.49	3221008.40	40.001264	-104.711092
	5900.00	22.45	267.82	5542.02	484.02	73.31	-71.34	-1878.91	0.00	1244288.69	3220970.25	40.001260	-104.711228
	6000.00	22.45	267.82	5634.44	576.44	74.81	-72.80	-1917.08	0.00	1244286.90	3220932.10	40.001256	-104.711364
	6100.00	22.45	267.82	5726.86	668.86	76.30	-74.25	-1955.24	0.00	1244285.10	3220893.95	40.001252	-104.711501
	6200.00	22.45	267.82	5819.28	761.28	77.79	-75.71	-1993.41	0.00	1244283.30	3220855.80	40.001248	-104.711637
	6300.00	22.45	267.82	5911.70	853.70	79.29	-77.16	-2031.57	0.00	1244281.51	3220817.65	40.001244	-104.711773
	6400.00	22.45	267.82	6004.12	946.12	80.78	-78.61	-2069.74	0.00	1244279.71	3220779.50	40.001240	-104.711909
	6500.00	22.45	267.82	6096.54	1038.54	82.28	-80.07	-2107.91	0.00	1244277.91	3220741.35	40.001236	-104.712046
	6600.00	22.45	267.82	6188.96	1130.96	83.77	-81.52	-2146.07	0.00	1244276.12	3220703.20	40.001232	-104.712182
	6700.00	22.45	267.82	6281.38	1223.38	85.26	-82.98	-2184.24	0.00	1244274.32	3220665.05	40.001228	-104.712318
	6800.00	22.45	267.82	6373.79	1315.79	86.76	-84.43	-2222.40	0.00	1244272.53	3220626.90	40.001224	-104.712454
	6900.00	22.45	267.82	6466.21	1408.21	88.25	-85.88	-2260.57	0.00	1244270.73	3220588.75	40.001220	-104.712590
	7000.00	22.45	267.82	6558.63	1500.63	89.74	-87.34	-2298.74	0.00	1244268.93	3220550.60	40.001216	-104.712727
Build/Turn 8 DLS	7082.92	22.45	267.82	6635.26	1577.26	90.98	-88.54	-2330.38	0.00	1244267.44	3220518.97	40.001213	-104.712864
	7100.00	22.54	264.25	6651.05	1593.05	91.44	-88.99	-2336.90	8.00	1244266.93	3220512.46	40.001212	-104.712863
	7200.00	24.53	244.75	6742.87	1684.87	102.27	-99.79	-2374.80	8.00	1244255.80	3220474.65	40.001182	-104.712998
	7300.00	28.57	228.23	6832.41	1774.41	126.82	-124.30	-2411.74	8.00	1244230.97	3220437.94	40.001115	-104.713130
	7400.00	33.95	217.75	6917.94	1859.94	164.61	-162.05	-2447.01	8.00	1244192.90	3220403.02	40.001011	-104.713256
	7500.00	40.11	209.26	6997.79	1939.79	214.91	-212.31	-2479.90	8.00	1244142.35	3220370.57	40.000873	-104.713373
	7600.00	46.76	202.76	7070.40	2012.40	276.73	-274.10	-2509.79	8.00	1244080.29	3220341.24	40.000704	-104.713480
	7700.00	53.69	197.57	7134.36	2076.36	348.87	-346.22	-2536.09	8.00	1244007.95	3220315.59	40.000506	-104.713574
	7800.00	60.82	193.24	7188.43	2130.43	429.93	-427.26	-2558.28	8.00	1243926.71	3220294.12	40.000283	-104.713653
	7900.00	68.07	189.48	7231.55	2173.55	518.34	-515.64	-2575.95	8.00	1243838.18	3220277.25	40.000040	-104.713716
	8000.00	75.39	186.09	7262.89	2204.89	612.36	-609.65	-2588.74	8.00	1243744.06	3220265.31	39.999782	-104.713762
	8100.00	82.76	182.91	7281.84	2223.84	710.18	-707.46	-2596.40	8.00	1243646.19	3220258.52	39.999514	-104.713789
	8192.83	89.62	180.06	7288.00	2230.00	802.70	-799.98	-2598.80	8.00	1243553.65	3220256.96	39.999260	-104.713798
	8200.00	89.62	180.06	7288.05	2230.05	809.88	-807.16	-2598.81	0.00	1243546.48	3220257.01	39.999240	-104.713798
	8300.00	89.62	180.06	7288.71	2230.71	909.88	-907.16	-2598.92	0.00	1243446.48	3220257.80	39.998966	-104.713798
	8400.00	89.62	180.06	7289.37	2231.37	1009.88	-1007.15	-2599.03	0.00	1243346.49	3220258.59	39.998691	-104.713798
	8500.00	89.62	180.06	7290.03	2232.03	1109.87	-1107.15	-2599.14	0.00	1243246.50	3220259.38	39.998417	-104.713799
	8600.00	89.62	180.06	7290.69	2232.69	1209.87	-1207.15	-2599.25	0.00	1243146.51	3220260.16	39.998142	-104.713799
	8700.00	89.62	180.06	7291.36	2233.36	1309.87	-1307.15	-2599.36	0.00	1243046.52	3220260.95	39.997868	-104.713799
	8800.00	89.62	180.06	7292.02	2234.02	1409.87	-1407.15	-2599.47	0.00	1242946.53	3220261.74	39.997593	-104.713800
	8900.00	89.62	180.06	7292.68	2234.68	1509.86	-1507.14	-2599.58	0.00	1242846.54	3220262.52	39.997319	-104.713800
	9000.00	89.62	180.06	7293.34	2235.34	1609.86	-1607.14	-2599.69	0.00	1242746.55	3220263.31	39.997044	-104.713800
	9100.00	89.62	180.06	7294.00	2236.00	1709.86	-1707.14	-2599.80	0.00	1242646.56	3220264.10	39.996770	-104.713801
	9200.00	89.62	180.06	7294.66	2236.66	1809.86	-1807.14	-2599.91	0.00	1242546.56	3220264.88	39.996495	-104.713801
	9300.00	89.62	180.06	7295.32	2237.32	1909.86	-1907.13	-2600.02	0.00	1242446.57	3220265.67	39.996221	-104.713801
	9400.00	89.62	180.06	7295.99	2237.99	2009.85	-2007.13	-2600.13	0.00	1242346.58	3220266.46	39.995946	-104.713802
9500.00	89.62	180.06	7296.65	2238.65	2109.85	-2107.13	-2600.24	0.00	1242246.59	3220267.25	39.995672	-104.713802	
9600.00	89.62	180.06	7297.31	2239.31	2209.85	-2207.13	-2600.35	0.00	1242146.60	3220268.03	39.995397	-104.713803	
9700.00	89.62	180.06	7297.97	2239.97	2309.85	-2307.12	-2600.46	0.00	1242046.61	3220268.82	39.995123	-104.713803	
9800.00	89.62	180.06	7298.63	2240.63	2409.84	-2407.12	-2600.57	0.00	1241946.62	3220269.61	39.994848	-104.713803	
9900.00	89.62	180.06	7299.29	2241.29	2509.84	-2507.12	-2600.68	0.00	1241846.63	3220270.39	39.994574	-104.713804	
10000.00	89.62	180.06	7299.95	2241.95	2609.84	-2607.12	-2600.79	0.00	1241746.64	3220271.18	39.994299	-104.713804	
10100.00	89.62	180.06	7300.62	2242.62	2709.84	-2707.12	-2600.90	0.00	1241646.64	3220271.97	39.994025	-104.713804	
10200.00	89.62	180.06	7301.28	2243.28	2809.84	-2807.11	-2601.01	0.00	1241546.65	3220272.75	39.993750	-104.713805	
10300.00	89.62	180.06	7301.94	2243.94	2909.83	-2807.11	-2601.12	0.00	1241446.66	3220273.54	39.993476	-104.713805	
10400.00	89.62	180.06	7										

Comments	MD (ft)	Incl (°)	Azim True (°)	TVD (ft)	TVDSS (ft)	VSEC (ft)	NS (ft)	EW (ft)	DLS (°/100ft)	Northing (ftUS)	Easting (ftUS)	Latitude (°)	Longitude (°)
	15700.00	91.12	180.06	7312.33	2254.33	8309.56	-8306.83	-2607.06	0.00	1236047.30	3220316.04	39.978653	-104.713824
	15800.00	91.12	180.06	7310.37	2252.37	8409.54	-8406.81	-2607.17	0.00	1235947.33	3220316.82	39.978378	-104.713825
	15900.00	91.12	180.06	7308.42	2250.42	8509.52	-8506.79	-2607.28	0.00	1235847.35	3220317.61	39.978104	-104.713825
	16000.00	91.12	180.06	7306.47	2248.47	8609.50	-8606.77	-2607.39	0.00	1235747.38	3220318.40	39.977830	-104.713825
	16100.00	91.12	180.06	7304.52	2246.52	8709.48	-8706.75	-2607.50	0.00	1235647.40	3220319.18	39.977555	-104.713826
	16200.00	91.12	180.06	7302.57	2244.57	8809.46	-8806.74	-2607.61	0.00	1235547.43	3220319.97	39.977281	-104.713826
	16300.00	91.12	180.06	7300.62	2242.62	8909.44	-8906.72	-2607.72	0.00	1235447.45	3220320.76	39.977006	-104.713826
	16400.00	91.12	180.06	7298.66	2240.66	9009.42	-9006.70	-2607.83	0.00	1235347.48	3220321.54	39.976732	-104.713827
	16500.00	91.12	180.06	7296.71	2238.71	9109.40	-9106.68	-2607.94	0.00	1235247.51	3220322.33	39.976457	-104.713827
	16600.00	91.12	180.06	7294.76	2236.76	9209.38	-9206.66	-2608.05	0.00	1235147.53	3220323.12	39.976183	-104.713827
	16700.00	91.12	180.06	7292.81	2234.81	9309.37	-9306.64	-2608.16	0.00	1235047.56	3220323.91	39.975908	-104.713828
	16800.00	91.12	180.06	7290.86	2232.86	9409.35	-9406.62	-2608.27	0.00	1234947.58	3220324.69	39.975634	-104.713828
	16900.00	91.12	180.06	7288.91	2230.91	9509.33	-9506.60	-2608.38	0.00	1234847.61	3220325.48	39.975359	-104.713828
	17000.00	91.12	180.06	7286.95	2228.95	9609.31	-9606.58	-2608.49	0.00	1234747.63	3220326.27	39.975085	-104.713829
	17100.00	91.12	180.06	7285.00	2227.00	9709.29	-9706.56	-2608.60	0.00	1234647.66	3220327.05	39.974811	-104.713829
	17200.00	91.12	180.06	7283.05	2225.05	9809.27	-9806.54	-2608.71	0.00	1234547.69	3220327.84	39.974536	-104.713829
	17300.00	91.12	180.06	7281.10	2223.10	9909.25	-9906.53	-2608.82	0.00	1234447.71	3220328.63	39.974262	-104.713830
	17400.00	91.12	180.06	7279.15	2221.15	10009.23	-10006.51	-2608.93	0.00	1234347.74	3220329.41	39.973987	-104.713830
	17500.00	91.12	180.06	7277.20	2219.20	10109.21	-10106.49	-2609.04	0.00	1234247.76	3220330.20	39.973713	-104.713831
County Line 3107-05H BHL	17510.09	91.12	180.06	7277.00	2219.00	10119.30	-10116.57	-2609.05	0.00	1234237.68	3220330.28	39.973685	-104.713831
	17600.00	91.12	180.06	7275.25	2217.25	10209.19	-10206.47	-2609.15	0.00	1234147.79	3220330.99	39.973438	-104.713831
County Line 3107-05H BHL+100ft	17610.09	91.12	180.06	7275.05	2217.05	10219.28	-10216.55	-2609.16	0.00	1234137.70	3220331.07	39.973411	-104.713831

Survey Type: Def Plan

Survey Error Model: ISCWSA Rev 3 *** 3-D 97.071% Confidence 3.0000 sigma
Survey Program:

Description	Part	MD From (ft)	MD To (ft)	EOU Freq (ft)	Hole Size (in)	Casing Diameter (in)	Expected Max Inclination (deg)	Survey Tool Type	Borehole / Survey
	1	0.000	21.000	Act Stns	13.500	9.625		B001Mb_MWD+HRGM-Depth Only	Original Hole / County Line 3107- 05H MWD 0' to update
	1	21.000	1782.000	Act Stns	13.500	9.625		B001Mb_MWD+HRGM	Original Hole / County Line 3107- 05H MWD 0' to update
	1	1782.000	2437.476	1/100.000	13.500	9.625		B001Mb_MWD+HRGM	Original Hole / County Line 3107- 05H R1 mdv 05Nov21
	1	2437.476	17610.087	1/100.000	8.500	5.500		B001Mb_MWD+HRGM	Original Hole / County Line 3107- 05H R1 mdv 05Nov21