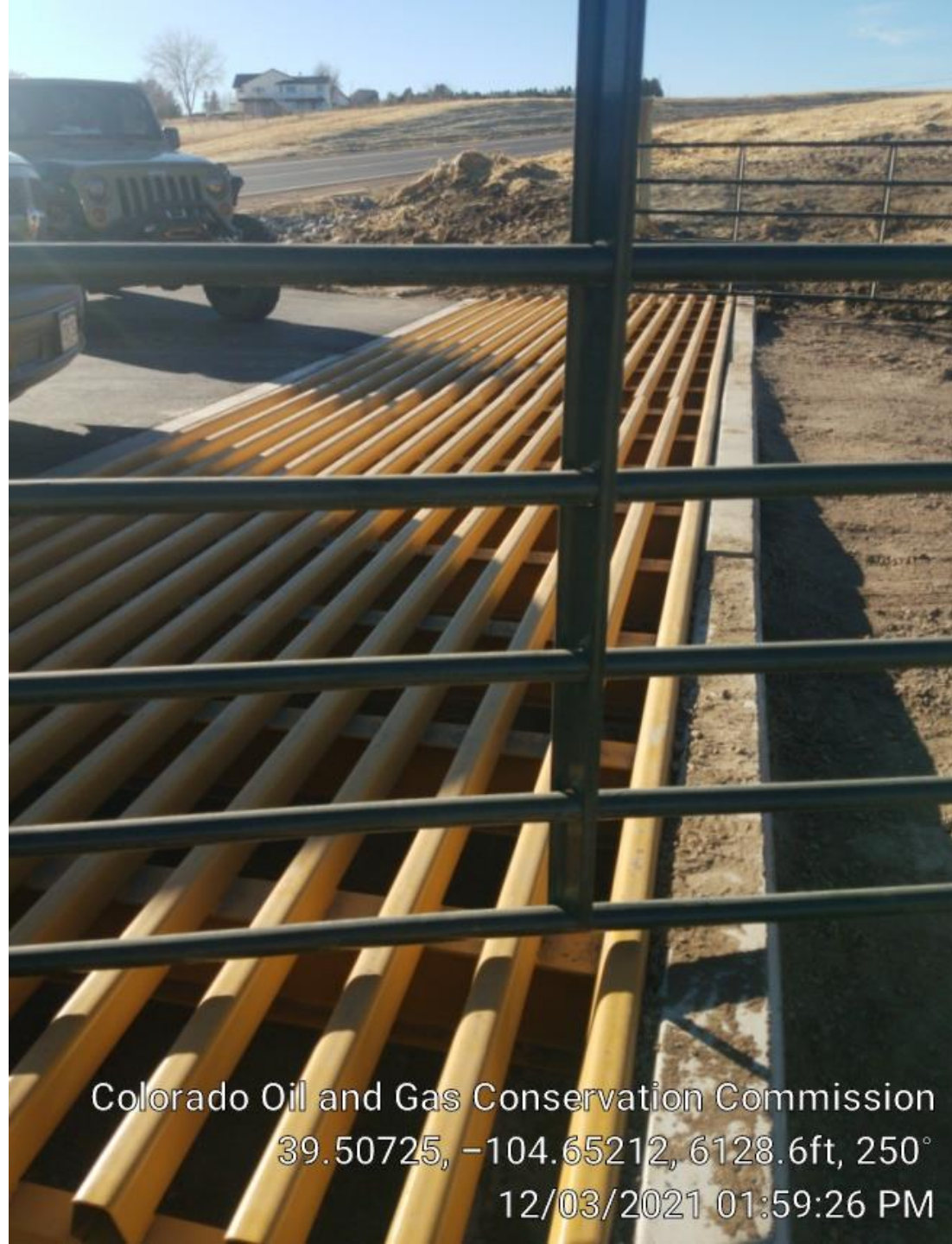


GMT Exploration Company LLC, Crystal 6-65 22-10 1HN  
039-06733, etc.  
Inspection #688311699  
12/3/2021



SE corner of  
cattle guard.

Colorado Oil and Gas Conservation Commission  
39.50725, -104.65212, 6128.6ft, 250°  
12/03/2021 01:59:26 PM



Stakes of  
old access  
road ad  
entrance.



Colorado Oil and Gas Conservation Commission  
39.5073, -104.65208, 6138.5ft, 69°  
12/03/2021 01:59:38 PM





New center line  
stake for access  
road.

Colorado Oil and Gas Conservation Commission  
39.50749, -104.65193, 6151.6ft, 299°  
12/03/2021 02:00:03 PM





New access  
road stake at  
entrance.

Colorado Oil and Gas Conservation Commission  
39.50747, -104.65195, 6151.6ft, 181°  
12/03/2021 02:00:31 PM





New culverts to  
move access road  
at entrance.

Colorado Oil and Gas Conservation Commission  
39.5075, -104.65206, 6145.0ft, 34°  
12/03/2021 02:00:47 PM




New access road at  
pad edge.

Colorado Oil and Gas Conservation Commission

249<sup>o</sup>

12/03/2021 02:05:39 PM





New  
access  
road at  
edge of  
pad.

Colorado Oil and Gas Conservation Commission  
39.51066, -104.64698, 6115.5ft, 156°  
12/03/2021 02:31:38 PM





SW cor of pad.

Colorado Oil and Gas Conservation Commission  
39.51047, -104.64694, 6122.0ft, 98°  
12/03/2021 02:06:05 PM





SE cor of pad when old  
access road would have  
been.

Colorado Oil and Gas Conservation Commission  
39.51047, -104.64693, 6122.0ft, 355°  
12/03/2021 02:06:10 PM





SE cor of  
pad  
looking  
NE to  
Coal  
Creek.

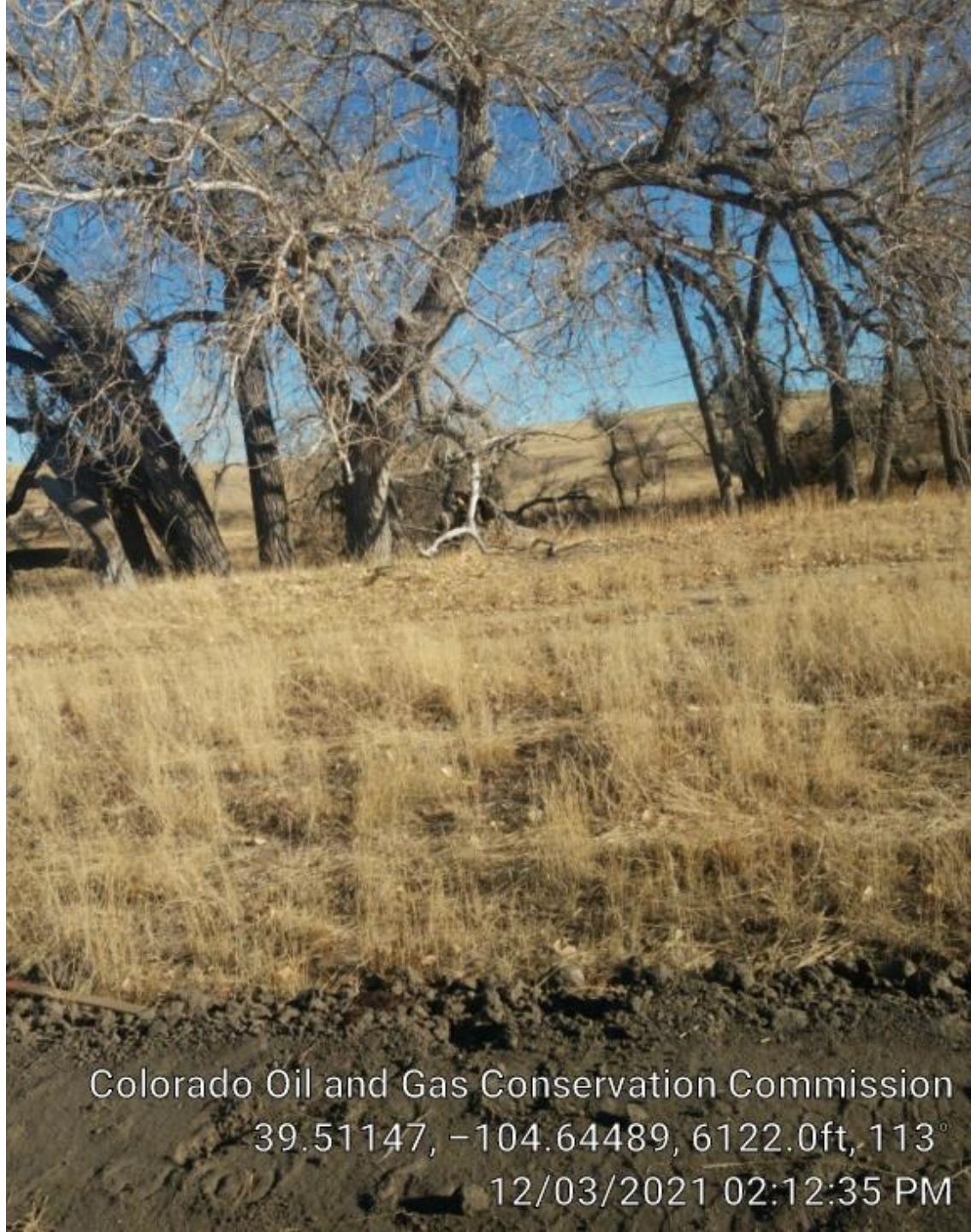
Colorado Oil and Gas Conservation Commission  
39.51044, -104.6457, 6135.2ft, 101°  
12/03/2021 02:09:58 PM





SE cor looking  
east.

Colorado Oil and Gas Conservation Commission  
39.51042, -104.64561, 6125.3ft, 21°  
12/03/2021 02:10:10 PM



East edge of pad  
looking east to Coal  
Creek.

Colorado Oil and Gas Conservation Commission  
39.51147, -104.64489, 6122.0ft, 113°  
12/03/2021 02:12:35 PM





Same point  
as last slide  
but looking  
west.

Colorado Oil and Gas Conservation Commission

39.51169, -104.64478, 6118.8ft, 259°

12/03/2021 02:13:13 PM



Topsoil pile.

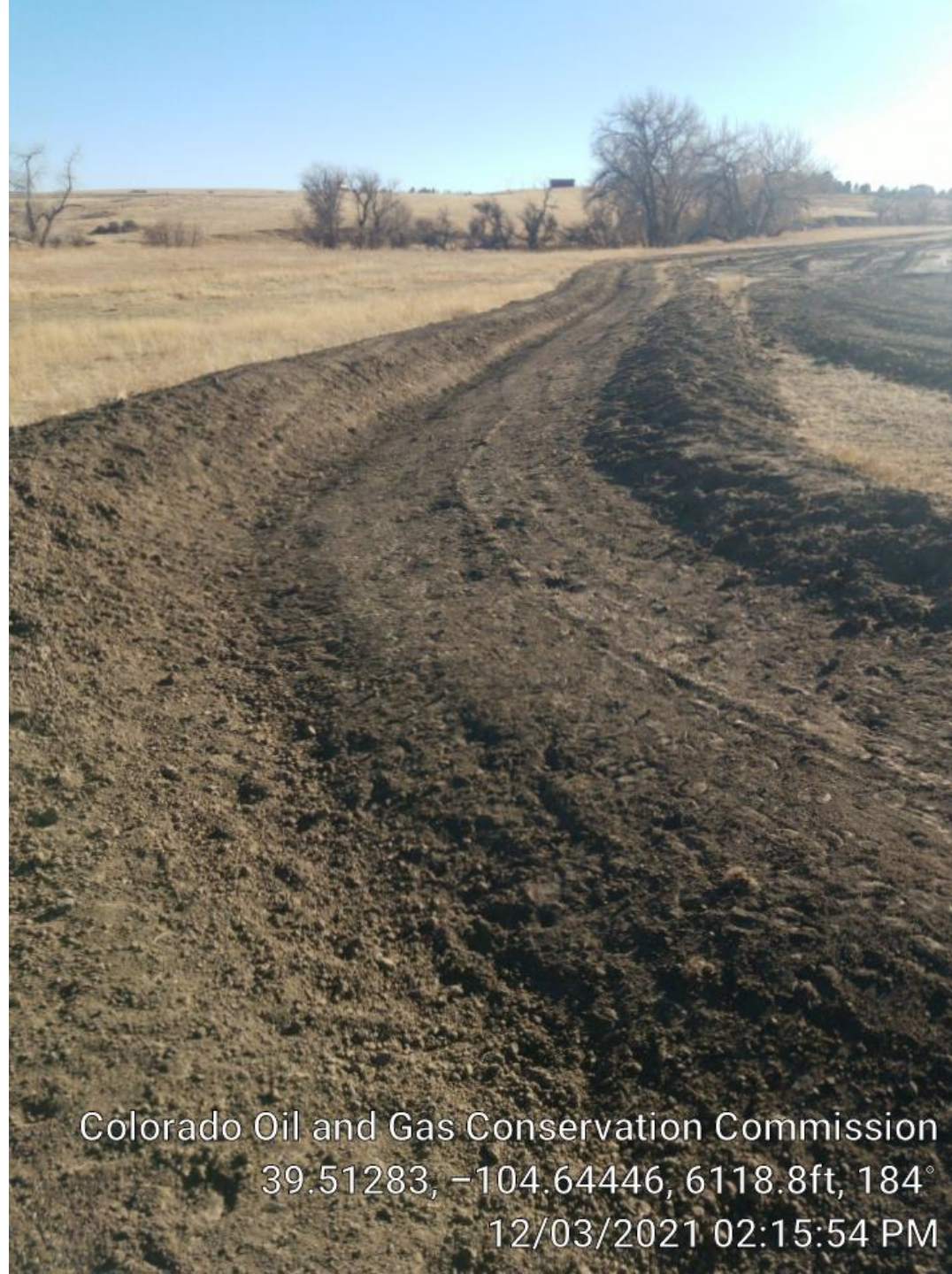
Colorado Oil and Gas Conservation Commission  
39.51238, -104.64446, 6102.4ft, 291°  
12/03/2021 02:14:58 PM





NE cor of pad  
looking west.

Colorado Oil and Gas Conservation Commission  
39.51283, -104.64444, 6112.2ft, 255°  
12/03/2021 02:15:51 PM



NE cor of pad  
looking SE.

Colorado Oil and Gas Conservation Commission  
39.51283, -104.64446, 6118.8ft, 184°  
12/03/2021 02:15:54 PM





Colorado Oil and Gas Conservation Commission  
39.51282, -104.6453, 6122.0ft, 105°  
12/03/2021 02:17:16 PM



Colorado Oil and Gas Conservation Commission  
39.51266, -104.64542, 6131.9ft, 257°  
12/03/2021 02:17:44 PM





Colorado Oil and Gas Conservation Commission

39.51265, -104.64542, 6131.9ft, 196°

12/03/2021 02:17:54 PM



Colorado Oil and Gas Conservation Commission  
39.51251, -104.64642, 6115.5ft, 205°  
12/03/2021 02:19:28 PM