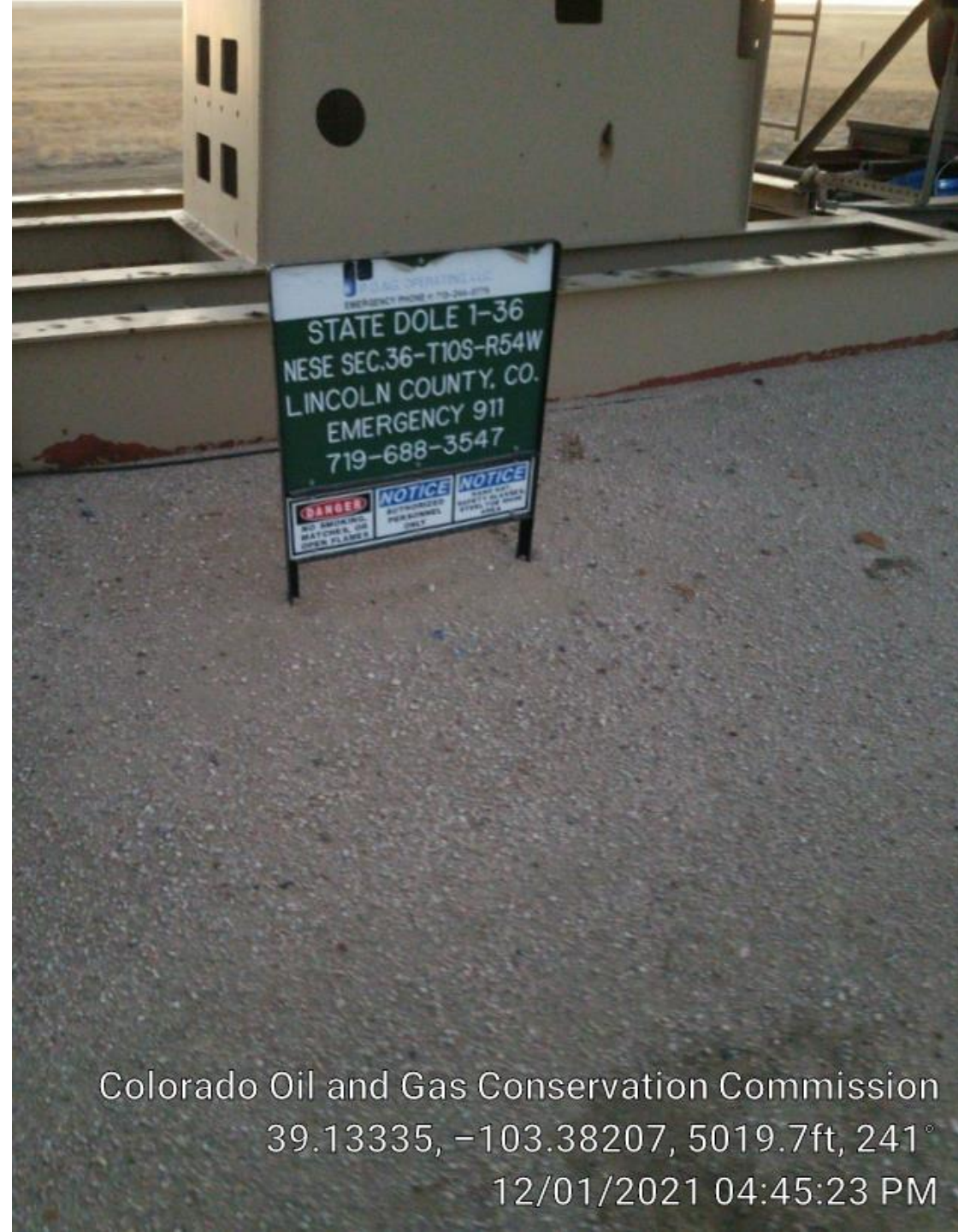


P O & G Operating LLC, State Dole 1-36
073-06299

Inspection #688311682

12/1/2021

Reinspection



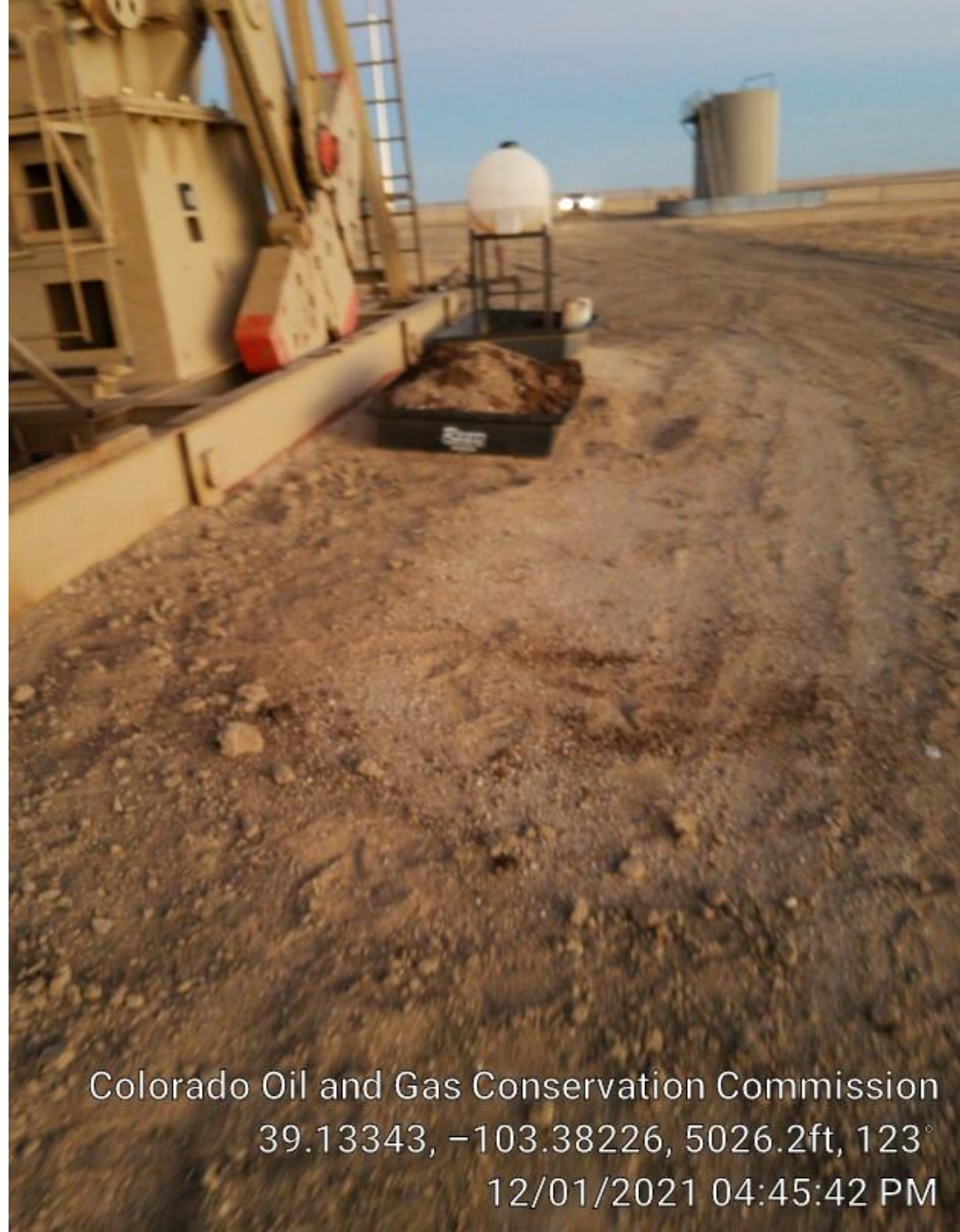
Colorado Oil and Gas Conservation Commission
39.13335, -103.38207, 5019.7ft, 241°
12/01/2021 04:45:23 PM



Colorado Oil and Gas Conservation Commission
39.13332, -103.38201, 5023.0ft, 263°
12/01/2021 04:45:16 PM




Colorado Oil and Gas Conservation Commission
39.13343, -103.3822, 5036.1ft, 146°
12/01/2021 04:45:36 PM



Colorado Oil and Gas Conservation Commission
39.13343, -103.38226, 5026.2ft, 123°
12/01/2021 04:45:42 PM



Colorado Oil and Gas Conservation Commission
39.13301, -103.38152, 5049.2ft, 212°
12/01/2021 04:44:17 PM



PLAINS
196885
290368

Colorado Oil and Gas Conservation Commission
39.13301, -103.3815, 5052.5ft, 233°
12/01/2021 04:44:24 PM



Colorado Oil and Gas Conservation Commission
39.13302, -103.3815, 5049.2ft, 179°
12/01/2021 04:44:26 PM