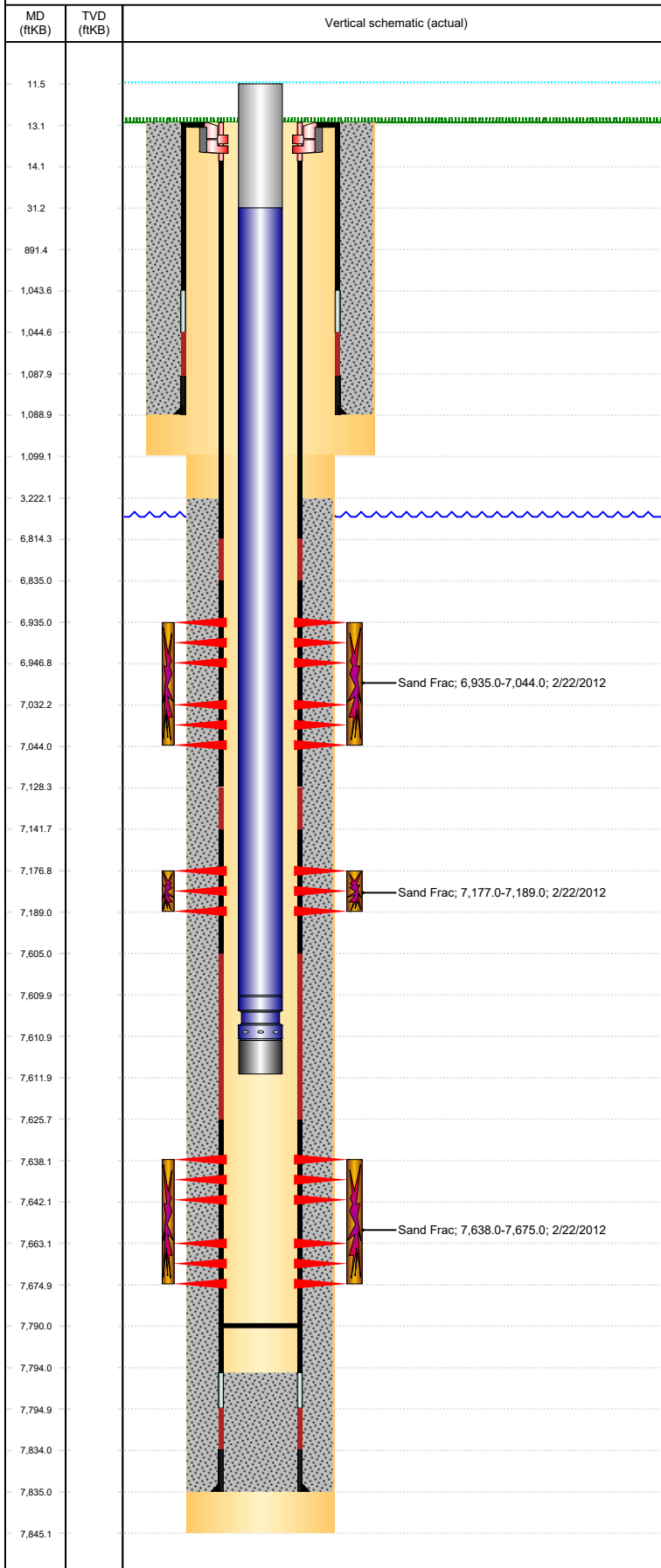


Wellbore Schematic Input Report-DJ

Well Name: BELL USX Y29-03

VERTICAL, ORIGINAL HOLE, 12/2/2021 3:04:06 PM



Well Header

API 05-123-32604	Business Unit DJ BASIN	District 15	Well Config VERTICAL
Original KB Elevation (ft) 4,987	KB - GL / MSL (ftKB) 13.00	Spud Date 1/20/2012	P & A Date
Comment			

Directions To Well
CR 18 & CR 53, GO WEST 0.6 MILES AND THEN SOUTH 0.1 MILE INTO LOCATION

Congressional Location

Quarter 3 NE	Quarter 4 NW	Section 29	Township 2	Twntshp N/S Dir N	Range 64	Range E/W Dir W
-----------------	-----------------	---------------	---------------	----------------------	-------------	--------------------

Bottom Hole Legal Location

Bottom Hole Legal Location

Plug Back Total Depths

Date	Depth (ftKB)	Method	Com
1/25/2012	7,794.0	CASING TALLY	FLOAT COLLAR
2/14/2012	7,795.0	CASED HOLE LOG	DEPTH LOGGER ON CBL
2/25/2012	7,789.9	TBG TALLY	DRILLED OUT KILLPLUG AND 2-CFP AND C/O TO...

Wellbore Sections

Section Des	Size (in)	Act Top, MD (ftKB)	Act Btm, MD (ftKB)
SURFACE	12 1/4	13	1,099
PRODUCTION	7 7/8	1099	7,845

Zone Statuses

Zone Name	Status Date	Status	Fluid Type	Job	Prod Method
NIOBRARA	3/16/2012	PR		DRILLING/CO...	
CODELL	3/16/2012	PR		DRILLING/CO...	
J SAND	3/16/2012	PR		DRILLING/CO...	

Casing Strings

Surface, 1,089.0ftKB

Casing Description Surface	Run Date 1/21/2012	OD (in) 8 5/8	Wt/Len (l...) 24.00	Grade J-55	Top, MD (ft...) 13.0	MD (ftKB) 1,089.0
-------------------------------	-----------------------	------------------	------------------------	---------------	-------------------------	----------------------

PRODUCTION, 7,835.0ftKB

Casing Description PRODUCTION	Run Date 1/25/2012	OD (in) 4 1/2	Wt/Len (l...) 11.60	Grade M-80	Top, MD (ft...) 13.0	MD (ftKB) 7,835.0
----------------------------------	-----------------------	------------------	------------------------	---------------	-------------------------	----------------------

Cement

Description Surface Casing Cement	Top Depth (ftKB) 13.0	Bottom Depth (ftKB) 1,089.0
Description Production Casing Cement	Top Depth (ftKB) 3,222.0	Bottom Depth (ftKB) 7,835.0

Tubing Strings

Tubing Description Tubing - Production	Run Date 2/25/2012	String... 2 3/8	ID (in) 2.00	Wt (lb/ft) 4.70	Grade J-55	Len (ft) 7,600.32	Set De...
---	-----------------------	--------------------	-----------------	--------------------	---------------	----------------------	-----------

Tubing Components

Item Des	OD (in)	Wt (lb/ft)	Grade	Jts	Len (ft)	Btm (ftKB)	Btm (TVD) (ftKB)
Tubing Pup Joint	2 3/8	4.70	J-55	2	19.82	31.3	
Tubing	2 3/8	4.70	J-55	246	7,578.60	7,609.9	
Pump Seating Nipple	2 3/8			1	1.10	7,611.0	
1/2 of Pump Off Bit Sub	2 3/8			1	0.80	7,611.8	

Other In Hole

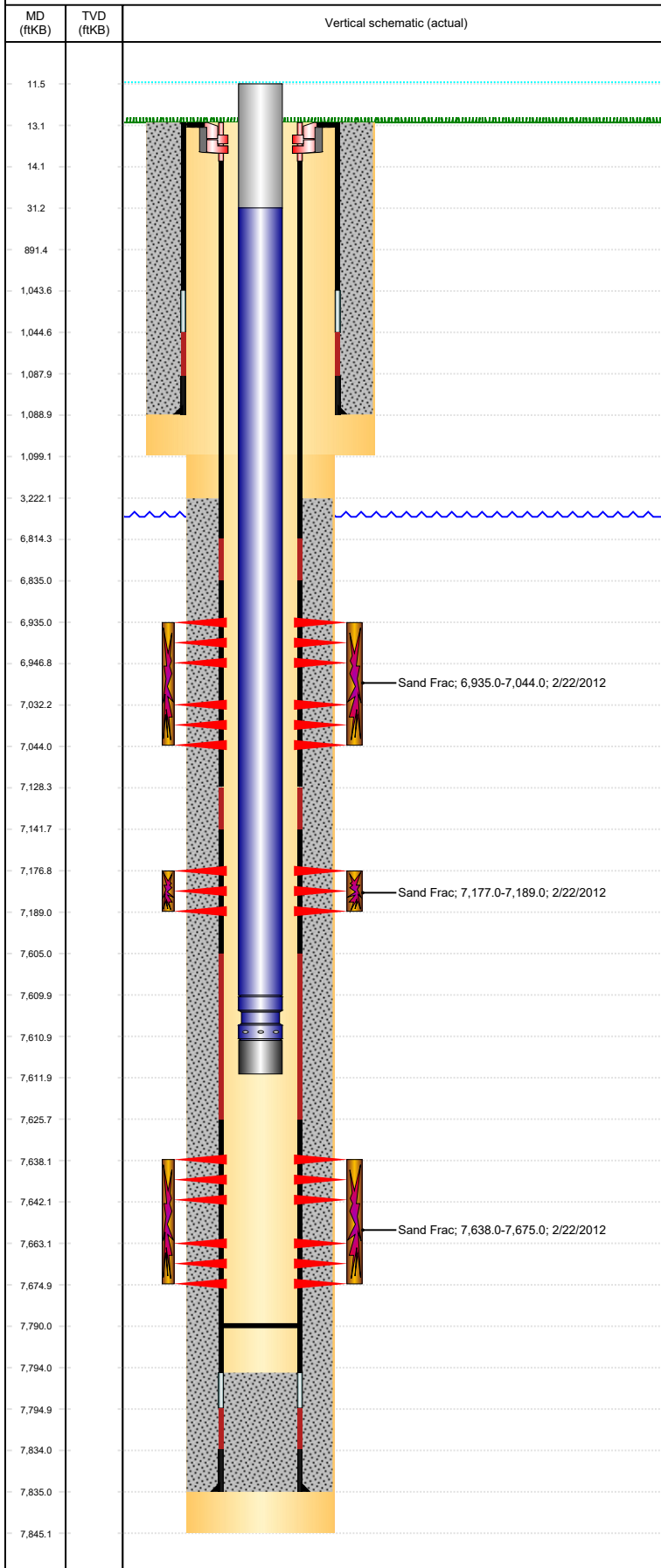
Run Date	Des	Make	OD (in)	Top (ftKB)	Btm (ftKB)	Pr op R un a

Logs

Date	Type	Top, MD (ftKB)	Btm, MD (ftKB)
1/24/2012	SPECTRAL DENSITY/Pe/DSN NEUTRON/SP/ARRAY COMPENSATED TRUE RESISTIVITY/SONIC (BSAT)	1,090.0	7,843.0
1/24/2012	SPECTRAL GAMMA RAY	6,663.0	7,788.0
2/14/2012	CBL/CCL/GR	1,900.0	7,794.0
6/15/2017	GYRO	0.0	7,550.0

Well Name: BELL USX Y29-03

VERTICAL, ORIGINAL HOLE, 12/2/2021 3:04:06 PM



Perforation Data					
Linked Zone	Bnch/St g	Sum of Entered Shot Total	Top (ftKB)	Btm (ftKB)	Date
NIOBRARA, ORIGINAL HOLE	B	24	6,935.00	6,947.00	2/22/2012
NIOBRARA, ORIGINAL HOLE	C	24	7,032.00	7,044.00	2/22/2012
CODELL, ORIGINAL HOLE		48	7,177.00	7,189.00	2/22/2012
J SAND, ORIGINAL HOLE		16	7,638.00	7,642.00	2/17/2012
J SAND, ORIGINAL HOLE		48	7,663.00	7,675.00	2/17/2012
Total		160			
Stimulation Intervals					
Interval... 1	Start Date 2/22/2012	Primary Job Type DRILLING/COMPLETION - ORIGINAL		Zone J SAND, ORIGINAL HOLE	
Technical Result Success		Tech Result Details According to Plan		Tech Result Note	
Comment (J-SAND): PERF 106 PIPE 771 OPEN 40 NWB 96 TOTAL 973 : 10 MIN 1263 15 MIN 1208: ISDP 5 MIN 2036:JOB WENT AS PLANNED					
Interval... 3	Start Date 2/22/2012	Primary Job Type DRILLING/COMPLETION - ORIGINAL		Zone CODELL, ORIGINAL HOLE	
Technical Result Success		Tech Result Details According to Plan		Tech Result Note	
Comment (COD): BALL DID NOT STAY HAD TO DROP NEW BALL AND PUMP DOWN:PERF 59 PIPE 151 OPEN 26 NWB 215 TOTAL 425: 5 MIN ISDP 3112: JOB WENT AS PLANNED					
Interval... 5	Start Date 2/22/2012	Primary Job Type DRILLING/COMPLETION - ORIGINAL		Zone NIOBRARA, ORIGINAL HOLE	
Technical Result Success		Tech Result Details According to Plan		Tech Result Note	
Comment (NIO B/C): 5 MIN ISDP 3121 : JOB WENT AS PLANNED					