

Cascade Creek 0697-15-08 Well Site

Cultural Distances COGCC Rule 304.b.(3)



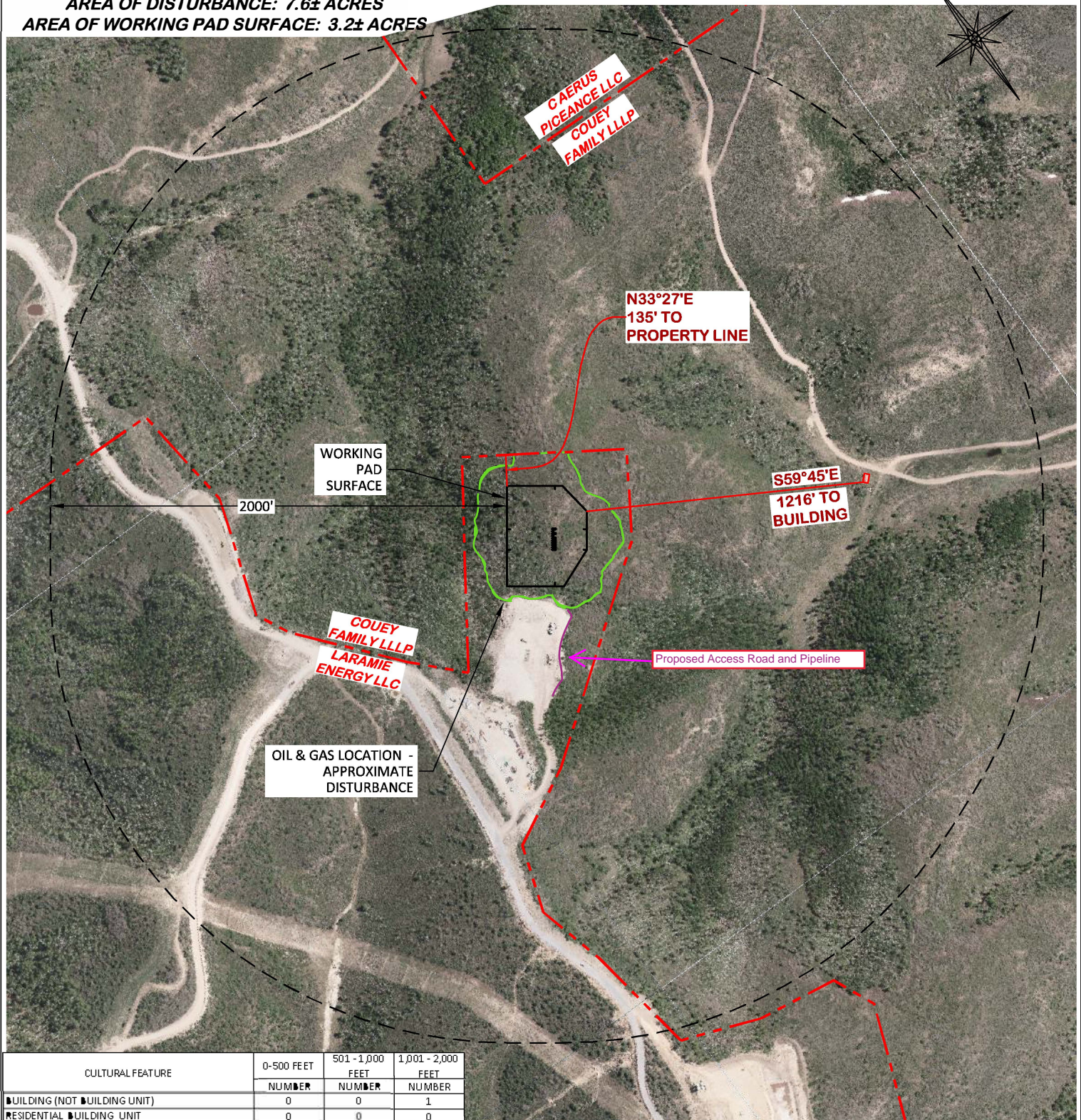
**Laramie Energy, LLC
760 Horizon Drive, Suite 101
Grand Junction, CO 81506**

UNGRADED ELEVATION: 8515.8'

FINAL ELEVATION: 8504.8'

AREA OF DISTURBANCE: 7.6± ACRES

AREA OF WORKING PAD SURFACE: 3.2± ACRES



CULTURAL FEATURE	0-500 FEET	501-1,000 FEET	1,001-2,000 FEET
	NUMBER	NUMBER	NUMBER
BUILDING (NOT BUILDING UNIT)	0	0	1
RESIDENTIAL BUILDING UNIT	0	0	0
HIGH OCCUPANCY BUILDING UNIT	0	0	0
SCHOOL PROPERTIES	0	0	0
SCHOOL FACILITIES	0	0	0
DESIGNATED OUTDOOR ACTIVITY AREA	0	0	0
SCHOOL WITHIN DISPROPORTIONALLY IMPACTED CO	0	0	0

CC 697-15-08



RIFFIN & ASSOCIATES, INC.

(307) 362-5028

1414 ELK ST., ROCK SPRINGS, WY 82901

DRAWN: 12/8/2020 - DEH

SCALE: 1" = 600'

REVISED: N/A

DRG JOB No. 22026

304B(3)C CULTURAL

CULTURAL DISTANCES DRAWING 2 OF 2

CULTURAL DISTANCES
LARAMIE ENERGY, LLC.

CC 697-15-08

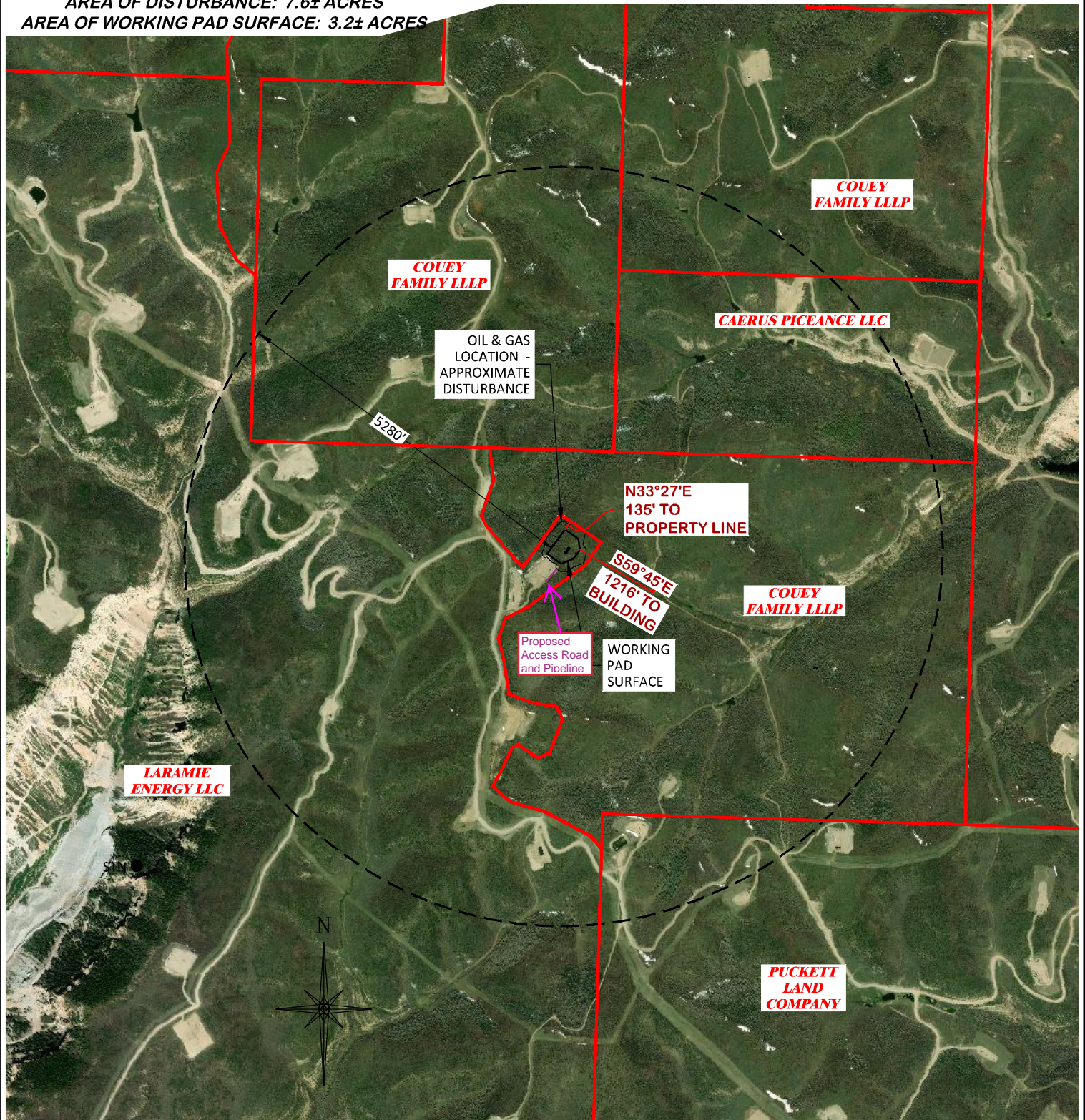
SENE, SECTION 15, T. 6 S., R. 97 W., 6th P.M.,
GARFIELD COUNTY, COLORADO

UNGRADED ELEVATION: 8515.8'

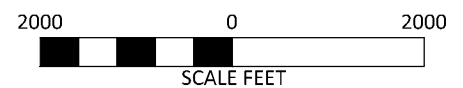
FINAL ELEVATION: 8504.8'

AREA OF DISTURBANCE: 7.6± ACRES

AREA OF WORKING PAD SURFACE: 3.2± ACRES



CC 697-15-08



DRG RIFFIN & ASSOCIATES, INC.
(307) 362-5028 1414 ELK ST., ROCK SPRINGS, WY 82901

DRAWN: 12/8/2020 - DEH

SCALE: 1" = 2000'

REVISED: N/A

DRG JOB No. 22026

304B(3)C MILE CULTURAL

CULTURAL DISTANCES DRAWING 1 OF 2

**CULTURAL DISTANCES
1-MILE RADIUS
LARAMIE ENERGY, LLC.
CC 697-15-08**

**SENE, SECTION 15, T. 6 S., R. 97 W., 6th P.M.,
GARFIELD COUNTY, COLORADO**

LARAMIE ENERGY

CC 697-15-08 WPS CULTURAL DISTANCES

SENE, SECTION 15, T6S, R97W, 6th PM

DATE: 12/11/2020 - D. HENDERHAN

REVISED: 10/6/2021 - D. HENDERHAN - MISC. REVISIONS

DISTANCE FROM WORKING PAD SURFACE 304b(3)A																		
	BUILDING (NOT BUILDING UNIT)		RESIDENTIAL BUILDING UNIT		HIGH OCCUPANCY BUILDING UNIT		SCHOOL FACILITY		DOAA		PUBLIC ROAD		ABOVE GROUND UTILITY		RAILROAD		PROPERTY LINE	
	DIRECTION	LENGTH	DIRECTION	LENGTH	DIRECTION	LENGTH	DIRECTION	LENGTH	DIRECTION	LENGTH	DIRECTION	LENGTH	DIRECTION	LENGTH	DIRECTION	LENGTH	DIRECTION	LENGTH
WPS	S59°E	1216'	5280'		5280'		5280'		5280'		5280'		5280'		5280'		NE	135'
DISTANCE FROM WORKING PAD SURFACE - DISPROPORTIONATELY IMPACTED COMMUNITY																		
WPS			RESIDENTIAL BUILDING UNIT		HIGH OCCUPANCY BUILDING UNIT		SCHOOL FACILITY											
	DIRECTION	LENGTH	DIRECTION	LENGTH	DIRECTION	LENGTH	DIRECTION	LENGTH	DIRECTION	LENGTH	DIRECTION	LENGTH	DIRECTION	LENGTH	DIRECTION	LENGTH	DIRECTION	LENGTH
	N/A				N/A				N/A									

CULTURAL FEATURE INFORMATION 304b(3)B			
CULTURAL FEATURE	0-500 FEET	501 - 1,000 FEET	1,001 - 2,000 FEET
	NUMBER	NUMBER	NUMBER
BUILDING UNIT	0	0	0
RESIDENTIAL BUILDING UNIT	0	0	0
HIGH OCCUPANCY BUILDING UNIT	0	0	0
SCHOOL PROPERTIES	0	0	0
SCHOOL FACILITIES	0	0	0
DESIGNATED OUTDOOR ACTIVITY AREA	0	0	0
SCHOOL WITHIN DISPROPORTIONALLY IMPACTED COMMUNITY	0	0	0