

**2021 Cascade Creek  
Oil and Gas Development Plan**

---

**Related Location and Flowline Map**

**Rule 304.b.(7).G**



**Laramie Energy, LLC  
760 Horizon Drive, Suite 101  
Grand Junction, CO 81506**

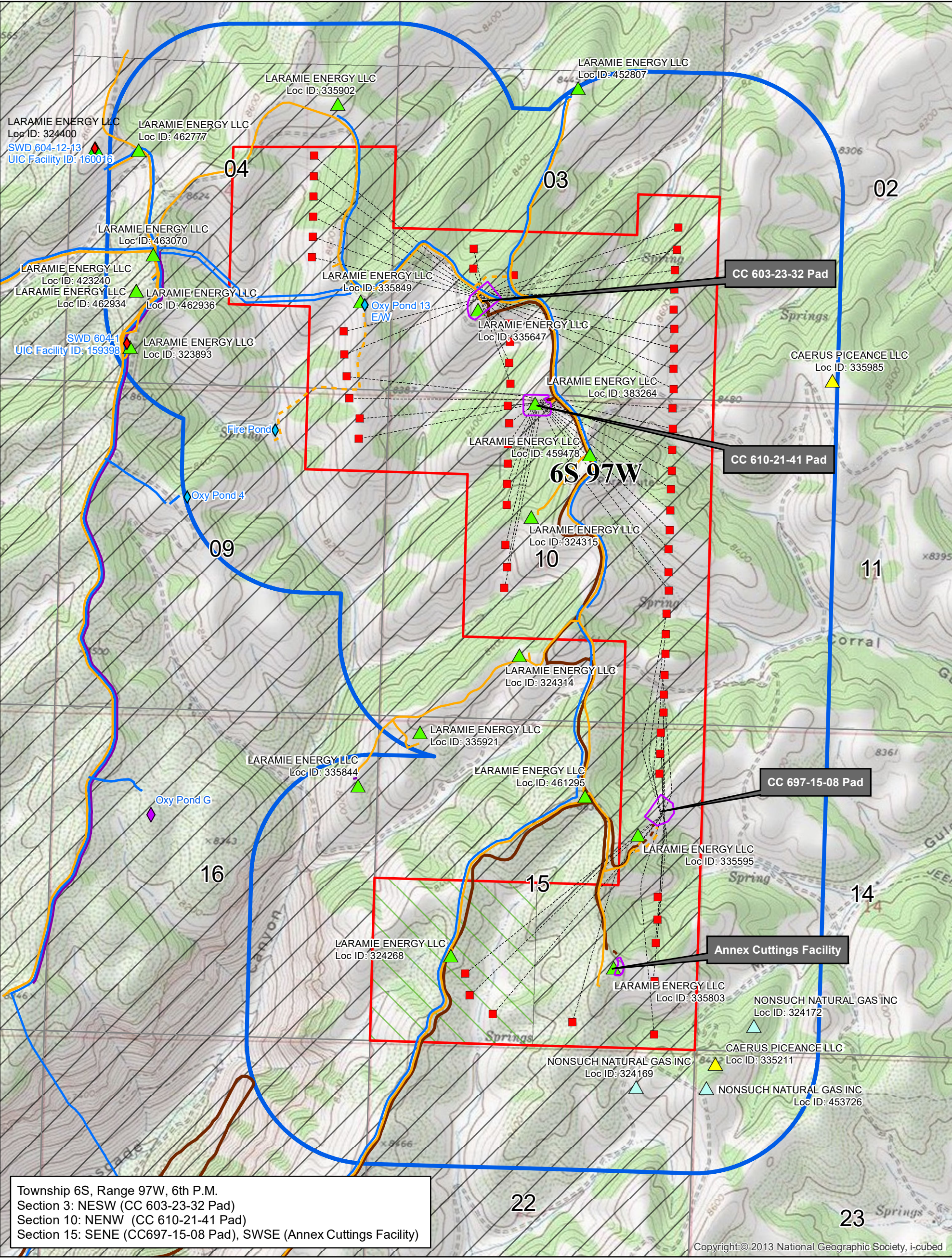
The following attachment addresses the requirements for Rule 304.b.(7).G Related Location and Flowline Map under 300 Series of the Colorado Oil and Gas Conservation Commission's (COGCC) rules as required for a Form 2A Location Assessment. The attached Related Location and Flowline Maps include the four (4) locations proposed Laramie Energy, LLC's (Laramie) (Operator # 10433) 2021 Cascade Creek Oil and Gas Development Plan.

**2021 Cascade Creek Oil and Gas Development Plan Locations**

- **CC 0697-15-08** - Well Site - (SENE, Section 15, Township 6 South, Range 97 West)
- **CC 0610-21-41** - Well Site - (NENW, Section 10, Township 6 South, Range 97 West)
- **CC 0603-23-32** - Well Site - (NESW, Section 3, Township 6 South, Range 97 West)
- **Annex Cutting Facility** – Centralized E&P Waste Management Facility – (SWSE, Section 15, Township 6 South, Range 97 West)

Four (4) maps (Topographic, Aerial, Section, and Relief) are attached plus a Location Table. The Related Location and Flowline Map identifies Oil and Gas Locations within the 2,000-foot buffer. For purposes of legibility, only the Operator and Location ID are identified on the Related Location and Flowline Map; therefore, a Location Table has been provided. The Location Table identifies Operator, Operator number, Location ID number, Location name, the location, and Form 2A Document Number (if available on the COGCC's database).





LEGEND

- |                                 |                              |                    |
|---------------------------------|------------------------------|--------------------|
| 2021 CC OGD Mineral Development | Existing Gas Pipeline        | Support Facility   |
| 2000' Buffer                    | Existing Condensate Pipeline | E&P Waste Facility |
| Proposed Well (BHL)             | Existing Water Pipeline      | SWD Facility       |
| Proposed Working Pad Surface    | Proposed Access Road         |                    |
| <b>Other Related Locations</b>  |                              |                    |
| CAERUS PICEANCE LLC             | Proposed Gas/Water Corridor  |                    |
| LARAMIE ENERGY LLC              | Existing Access Road         |                    |
| NONSUCH NATURAL GAS INC         | Federal Lease COC 56300      |                    |
|                                 | Fee Lease                    |                    |

2021 CASCADE CREEK OGD  
RELATED LOCATION AND FLOWLINE MAP  
LARAMIE ENERGY, LLC  
GARFIELD COUNTY, COLO.

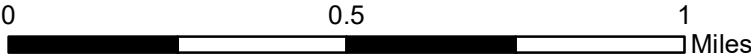
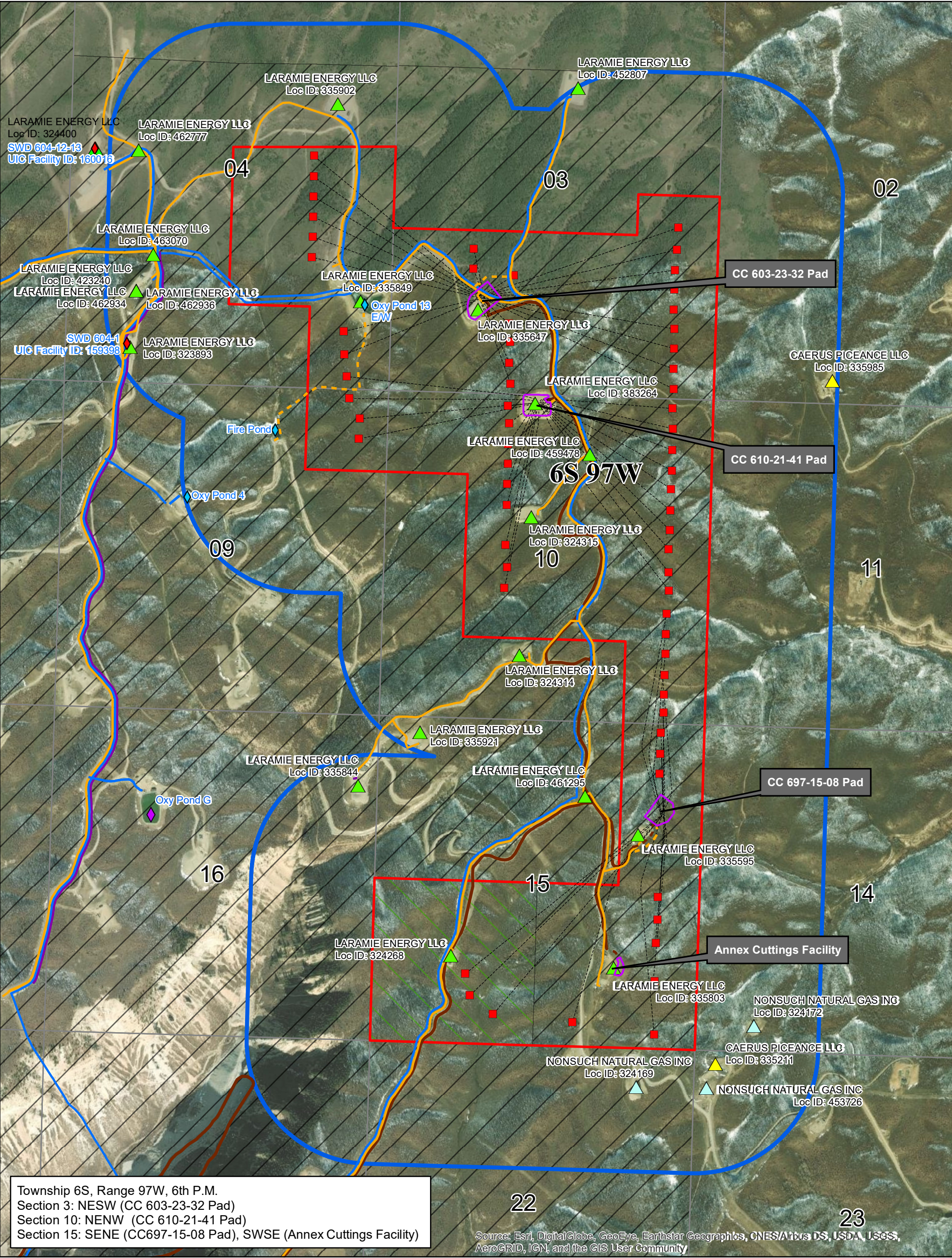


Exhibit prepared by: PMU      Date Prepared: 10/5/2021





**LEGEND**

2021 CC OGD Mineral Development

2000' Buffer

Proposed Well (BHL)

Proposed Working Pad Surface

**Other Related Locations**

CAERUS PICEANCE LLC

LARAMIE ENERGY LLC

NONSUCH NATURAL GAS INC

Existing Gas Pipeline

Existing Condensate Pipeline

Existing Water Pipeline

Proposed Access Road

Proposed Gas/Water Corridor

Existing Access Road

Federal Lease COC 56300

Fee Lease

Support Facility

E&P Waste Facility

SWD Facility

**2021 CASCADE CREEK OGD  
RELATED LOCATION AND FLOWLINE MAP**  
**LARAMIE ENERGY, LLC**  
**GARFIELD COUNTY, COLO.**

LARAMIE ENERGY

N

0

0.5

1

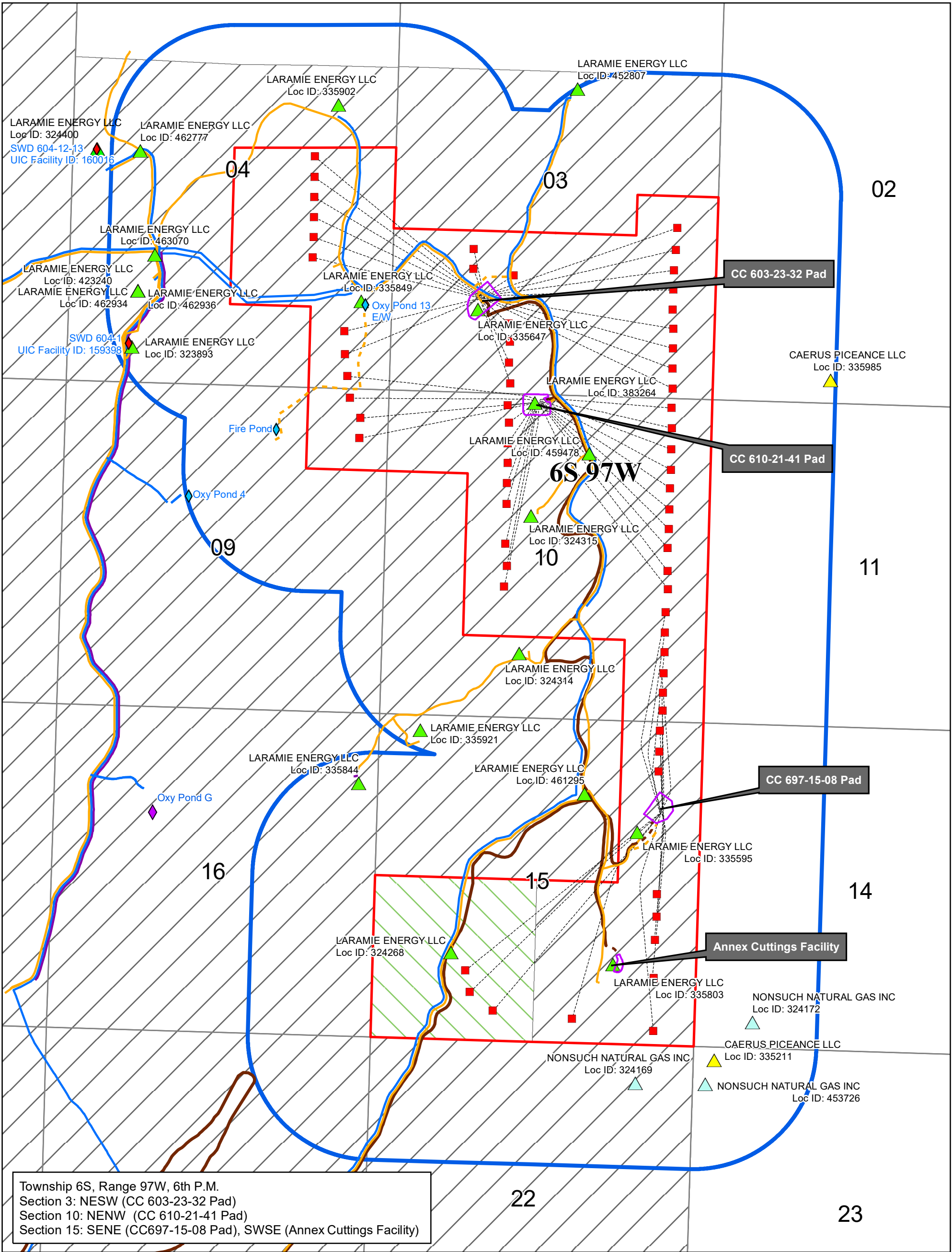
Miles

Exhibit prepared by: PMU

Date Prepared: 10/5/2021

Document Path: L:\GIS\GIS\_Staging\Landmapping\_2021\Landmaps\_21\CC\_OGDP\_RelatedLocation\_FlowlineMap.mxd





LEGEND

- |                                 |                              |                    |
|---------------------------------|------------------------------|--------------------|
| 2021 CC OGD Mineral Development | Existing Gas Pipeline        | Support Facility   |
| 2000' Buffer                    | Existing Condensate Pipeline | E&P Waste Facility |
| Proposed Well (BHL)             | Existing Water Pipeline      | SWD Facility       |
| Proposed Working Pad Surface    | Proposed Access Road         |                    |
| <b>Other Related Locations</b>  | Proposed Gas/Water Corridor  |                    |
| CAERUS PICEANCE LLC             | Existing Access Road         |                    |
| LARAMIE ENERGY LLC              | Federal Lease COC 56300      |                    |
| NONSUCH NATURAL GAS INC         | Fee Lease                    |                    |

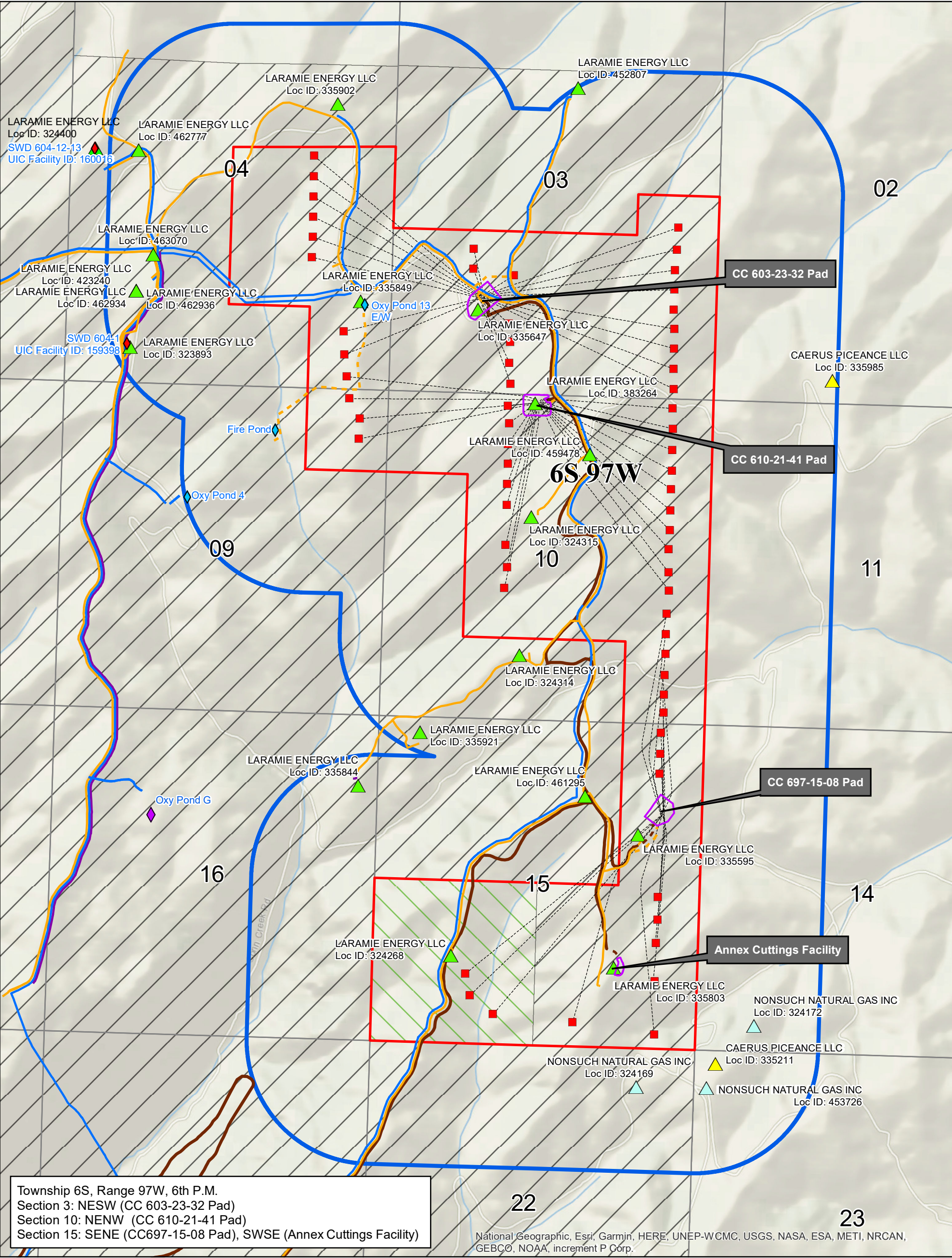
2021 CASCADE CREEK OGD  
RELATED LOCATION AND FLOWLINE MAP  
LARAMIE ENERGY, LLC  
GARFIELD COUNTY, COLO.



0 0.5 1 Miles

Exhibit prepared by: PMU Date Prepared: 10/5/2021





### LEGEND

2021 CC OGDG Mineral Development

2000' Buffer

Proposed Well (BHL)

Proposed Working Pad Surface

#### Other Related Locations

CAERUS PICEANCE LLC

LARAMIE ENERGY LLC

NONSUCH NATURAL GAS INC

Existing Gas Pipeline

Existing Condensate Pipeline

Existing Water Pipeline

Proposed Access Road

Proposed Gas/Water Corridor

Existing Access Road

Federal Lease COC 56300

Fee Lease

Support Facility

E&P Waste Facility

SWD Facility

### 2021 CASCADE CREEK OGDG RELATED LOCATION AND FLOWLINE MAP LARAMIE ENERGY, LLC GARFIELD COUNTY, COLO.

N

0

0.5

1

Miles

Exhibit prepared by: PMU

Date Prepared: 10/5/2021

Document Path: L:\GIS\GIS\_Staging\Landmapping\_2021\Landmaps\_21\CC\_OGDG\_RelatedLocation\_FlowlineMap.mxd



Operator Number	Operator	Location ID	Location Name	Document #	Legal Description	Lat/Long
10433	Laramie Energy, LLC	335844	CC 0697-16-16 Pad		NENE 16 6S97W	39.527078 / -108.216527
10433	Laramie Energy, LLC	335921	Cascade Creek /697-15-01	400049582	NWNW 15 6S97W	39.529541 / -108.213068
10433	Laramie Energy, LLC	461295	Cascade Creek		NWNE 15 6S97W	39.526915 / -108.203468
10433	Laramie Ener335844gy, LLC	335595	CC /0697-15-23 Pad		SENE 15 6S97W	39.525254 / -108.200363
10433	Laramie Energy, LLC	335803	Cascade Creek /697-15-54	400556865	SWSE 15 6S97W	39.519310 / -108.201530
10433	Laramie Energy, LLC	324268	OXY Federal /23-15 Pad		NWSW 15 6S97W	39.519647 / -108.210900
10163	Nonsuch Natural Gas Inc	324172	SOC 697-14-66S97W /14SWSW		SWSW 14 6S97W	39.516897 / -108.193369
10163	Nonsuch Natural Gas Inc	324169	CSOC 697-22-66S97W /22NENE		NENE 22 6S97W	39.514027 / -108.200029
10163	Nonsuch Natural Gas Inc	453726	CSOC TB Location		NWNW 23 6S97W	39.514060 / -108.196000
10456	Caerus Piceance LLC	335211	CHEVRON-MARATHON-66S97W /23NWNW		NWNW 23 6S97W	39.515160 / -108.195520
10433	Laramie Energy, LLC	324314	CC /0610-24-43 Pad		SESW 10 6S97W	39.533117 / -108.207480
10433	Laramie Energy, LLC	324315	CC /0610-22-43 Pad		SENW 10 6S97W	39.539277 / -108.207040
10433	Laramie Energy, LLC	459478	CC /0610-22-43 Pad		SENW 10 6S97W	39.542140 / -108.203776
10433	Laramie Energy, LLC	383264	CC /0610-21-41 Pad	401598341	NENW 10 6S97W	39.544325 / -108.207010
10456	Caerus Piceance LLC	335985	697-2C-66S97W /2SESW		SESW 2 6S97W	39.545740 / -108.189950

Operator Number	Operator	Location ID	Location Name	Document #	Legal Description	Lat/Long
10433	Laramie Energy, LLC	335647	CC /0603-23-32 Pad	401712943	NESW 3 6S97W	39.548442 / - 108.210463
10433	Laramie Energy, LLC	335849	Pond 13 Central E&P Facility /13W & 13E	400884107	NESE 4 6S97W	39.548650 / - 108.217230
10433	Laramie Energy, LLC	323893	CC /0604-1 Pad		SWSW 4 6S97W	39.546317 / - 108.230411
10433	Laramie Energy, LLC		SWD 604-1	UIC: 159398	SWSW 4 6S97W	39.546317 / - 108.230411
10433	Laramie Energy, LLC	462936	Cascade Creek /697-04D		NWSW 4 6S97W	39.548840 / - 108.230140
10433	Laramie Energy, LLC	462934	Cascade Creek /697-04D		NWSW 4 6S97W	39.548840 / - 108.230140
10433	Laramie Energy, LLC	423240	Cascade Creek /697-04D	400153914	NWSW 4 6S97W	39.548840 / - 108.230140
10433	Laramie Energy, LLC	463070	Cascade Creek Manifold /697-04D		NESW 4 6S97W	39.550467 / - 108.229239
10433	Laramie Energy, LLC	462777	OXY Federal /		NWNW 4 6S97W	39.555097 / - 108.230249
10433	Laramie Energy, LLC	335902	CC /604-41-32 Pad	401438268	Lot 12 4 6S97W	39.557414 / - 108.218862
10433	Laramie Energy, LLC	452807	CC /0697-03-07 Pad	401387622	Lot 11 3 6S97W	39.558439 / - 108.205081