

Cascade Creek 0697-15-08 Well Site

**Rule 304.b.(1) Local Government Siting
Information**



**Laramie Energy, LLC
760 Horizon Drive, Suite 101
Grand Junction, CO 81506**

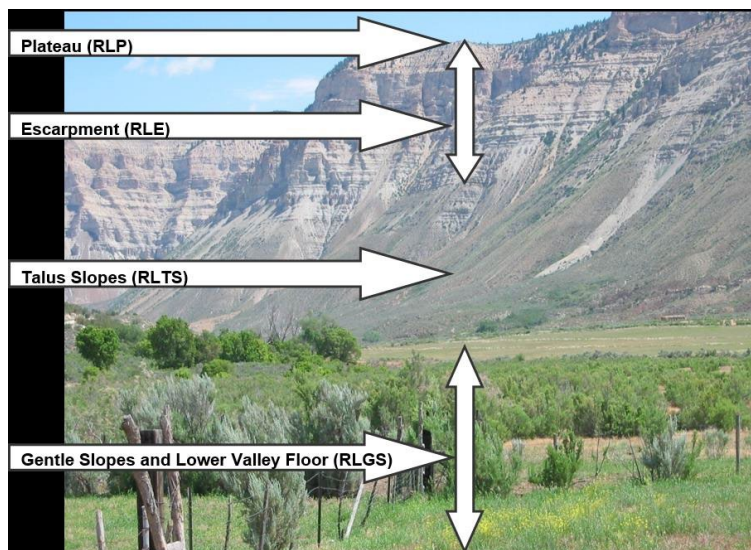
Cascade Creek 0697-15-08 Well Site
Rule 304.b.(1) Local Government Siting Information

Rule 304.b.(1) Local Government Siting Information.

The Operator will comply with the certification requirements of Rule 302.b.

Garfield County is the local government with jurisdiction over the siting of this proposed oil and gas location, Advance Notice was sent to Garfield County's Community Development Department, notifying Garfield County of Laramie's intentions to submit an Oil and Gas Development Plan to COGCC. The notification included the proposed locations, including the Cascade Creek 0697-15-08 well site. The notice letter was sent on July 14, 2021, to Garfield County pursuant to COGCC Rule 302.e.

Garfield County, the local government with jurisdiction over the siting of this proposed oil and gas location, determined that per the Garfield County Land Use and Development Code *Table 3-403: Use Table*, "Oil and Gas Drilling and Production" and "Hydraulic Fracturing, Remote Surface Location" are a use by right and exempt from Land Use Regulation in the Resource Lands Zone District. The subject parcel is designated by Garfield County as Resource Lands (RL) and the Oil and Gas Location is subclassified as Resource Lands – Plateau (RL-P).



Garfield County Resource Lands Zone District is subclassified into the above zones based on topography. A parcel zoned as Resource Lands may contain one or more subclassified zones.

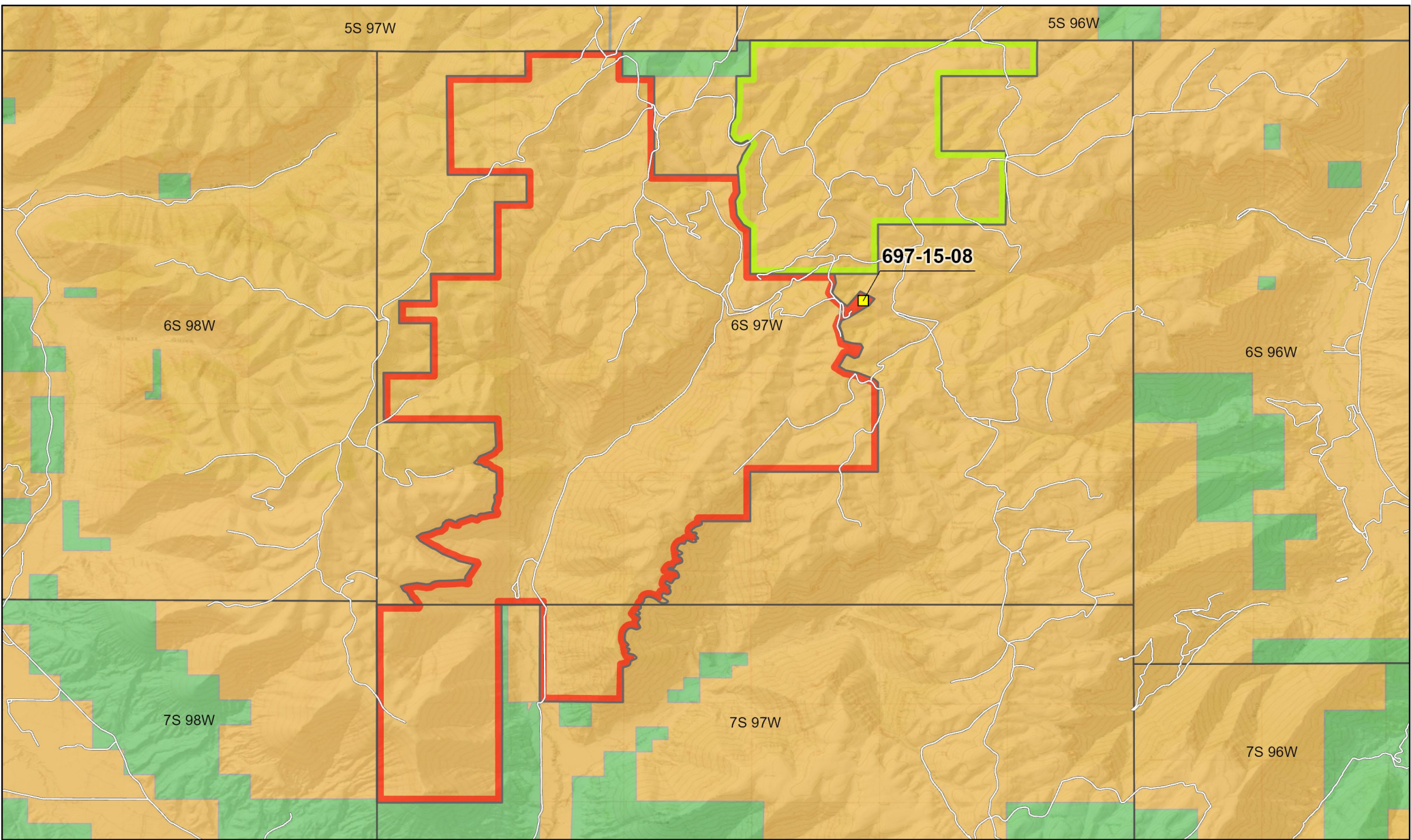
An excerpt from *Table 3-403: Use Table* of the Garfield County Land Use and Development Code, shows Use-By -Right for the proposed use in well site's location and for the designated zone district, is attached. Also attached is the Garfield County Zone District Figure, displaying the subject parcel and surrounding area zone district.

Local Government – Garfield County Contact Information

Kirby Wynn - Oil and Gas Liaison - 970-625-5905
Garfield County Oil and Gas Department
195 West 14th Street, Building D – Suite 310
Rifle, CO 81650

Sheryl Bower – Community Development Department Director – 970-945-8212
Garfield County Community Development Department
108 8th Street, Suite 401
Glenwood Springs, CO 81601

Table 3-403: Use Table														
/P/ By Right /A/ Administrative Review /L/ Limited Impact Review /M/ Major Impact Review /•/ Exempt from County Review and Standards														
Use Category	Use Type	Residential Districts				Nonresidential Districts				Resource Land Zone Districts				Unless exempted, all uses must comply with Article 7 Standards including Use-Specific Standards.
		R	RS	RU	RM HP	CL	CG	I	PL	RL P	RL E	RL TS	RL GS	
Accommodation	Lodging Facilities	L	L	L	L	P	P	L	•	A			A	
INDUSTRIAL USES														
Extraction	Compressor/Pipeline Pump Station (Not Subject to Article 9)	L	L					L	•	L	L	L	L	7-1001
	Compressor, Booster	A	A	A	A	A	A	A	•	P	P	P	P	
	Gravel Operation	M						M	L	L	L	L	L	7-1001, 7-1002
	Mining Operation	This use is subject to 1041 Regulations as Described in Article 14 of the Land Use and Development Code												
	Hydraulic Fracturing, Remote Surface Facility	P	P	P	P	P	P	P	•	P	P	P	P	EXEMPT
	Injection Well, Piped	P	A					P	•	P	P	P	P	7-1001
	Injection Well, Small	A	A					P	•	P	P	P	P	7-1001
	Injection Well, Large	L	L						•	P	P	P	P	7-1001
	Oil and Gas Drilling and Production	P	P	P	P	P	P	P	•	P	P	P	P	EXEMPT
Service	Contractor's Yard, Small	A				P	P	P	•	A	A	A	A	7-1001
	Contractor's Yard, Large	M				P	P	P	•	L		L	L	7-1001
	Material Handling	L					L	L	•	A	A	A	A	7-1001
	Processing	L				L	L	L	•	A	L	A	A	7-1001
	Processing, Accessory (Batch Plant)	L				L	L	L	•	A			A	7-1001
	Processing, Temporary	A				A	A	A	•	A			A	7-1001
	Vehicles, Machinery, and Heavy Equipment	M						M	•	L			M	7-1001
	Vehicle Safety Area	A							•	P			P	7-1007



LEGEND

Laramie Parcel (216921400026)

Public Lands

Couey Parcels (216910100020, 216902200030)

Resource Lands

07,00014,000

Ft

1 inch = 7,000 ft

Project No: 021-036	Garfield County Zoning Map Cascade Creek 697-15-08 Pad Laramie Energy SENE, Section 15, T6S R97W, 6th P.M. Garfield County, Colorado		330 Grand Avenue, Unit C Grand Junction, CO 81501 970-549-1015	Figure
Map By: NDB				2
Date: 4/13/2021				