

**Cascade Creek 0697-15-08 Well Site
Laramie Energy, LLC**

**Traffic Summary
Rule 304.c.(6)**

Prepared For:



**Laramie Energy, LLC
760 Horizon Drive, Suite 101
Grand Junction, CO 81506**

Prepared By:



**Entrada Consulting Group
330 Grand Avenue, Suite C
Grand Junction, CO 81501**

August 2021



INTRODUCTION

Laramie Energy LLC (Laramie) retained Entrada Consulting Group, Inc. (Entrada) to develop a Traffic Summary for submittal to the Colorado Oil and Gas Conservation Commission (COGCC). Garfield County does not require a Transportation Plan for the proposed well site.

The following Traffic Summary addresses Rule 304.c.(6) Transportation Plan of the COGCC 300 Series as requirement for a Form 2A Location Assessment.

TRAFFIC SUMMARY

The Cascade Creek (CC) 0697-15-08 Traffic Summary summarizes anticipated traffic numbers associated with each phase of development proposed for the site. The Traffic Summary was developed for Laramie’s (Operator Number 10433) proposed CC 0697-15-08 well site. The location is undisturbed and will be constructed as a well pad. Laramie is proposing 18 wells.

Location

The site is located on Parcel #216921400026 within Garfield County, Colorado. The parcel is located approximately 12 travel miles north of the DeBeque interchange (MP 61.6) along Interstate 70 (I-70). The site is located approximately 14 miles northeast of DeBeque, Colorado and 21.8 miles northeast by access route. The well site is located in the SENE Section 15, Township 6 South, Range 97 West of the 6th Principal Meridian in unincorporated Garfield County. Total surface area of initial disturbance is estimated at 7.6 acres for the proposed well site, which will be located on a 10,100-acre parcel. The parcel owner, Surface Owner and Operator of the location is Laramie.

Attachments

- Vicinity Map – **Attachment 1**
- Access Roads – **Attachment 2**
- Garfield County Traffic County Study – **Attachment 3**
- Garfield County Service Area and Benefit Districts - **Attachment 4**

EXISTING ROAD NETWORK

Regional trips to this well site will use the I-70 exit at DeBeque, Colorado. Vehicles traveling to the site will drive north through the Town of DeBeque and on Mesa County 45 Road (Roan Creek Road) for approximately 3.75 miles until the road crosses the Garfield/Mesa County Line where the road transitions to Garfield County Road (CR) 204. Approximately 4.25 miles north of the county line, vehicles will turn right onto CR 213 (Conn Creek Road) and travel approximately 4 miles to the end of the county road. From this point travel is on a private road for approximately 9.2 miles to the well site. This private road is located on property owned by Laramie.



Both CR 204 and CR 213 are preferred haul routes according to the Garfield County Road and Bridge Department. Both of these roads are generally used for access to ranches and agricultural operations, rural residential uses, oil and gas operations and access to public lands managed by the BLM.

According to the Garfield County Road and Bridge Department Director, Wyatt Keesbury, County Road 204 (Roan Creek Road) is a two-lane asphalt roadway with graveled shoulders in good condition. The posted speed limit is 45 m.p.h.

Garfield County Road & Bridge conducted a county-wide traffic study where daily traffic was counted for county roads in 2014 and 2019. The 2014 traffic count study was conducted in July and concluded that the average daily traffic (ADT) was 285 vehicles per day (VPD) on CR 204 at that time. The 2019 traffic county was conducted in August and concluded that the average daily traffic (ADT) was 310 vehicles per day (VPD) on CR 204 at that time.

According to the Garfield County Road and Bridge Department Director, Wyatt Keesbury, CR 213 is a two-lane gravel road with drainage ditches in good condition.

The Garfield County Road & Bridge Department has provided data that was collected on County Road 213 (Conn Creek Road) during the July 2014 traffic study. This data indicates that CR 213 had an average of 194 VPD at that time. The 2019 traffic study, conducted in August, concluded that CR 213 had an average of 144 VPD at that time. The studies suggest a decrease in average daily vehicles CR 213 between 2014 to 2019.

Background traffic volume counts from 2014 and 2019 are shown in **Table 1** below. Calculations for CR 204 road projections for 2023 are based on the vehicles VPD increase from 2014 to 2019 of 5 VPD per year. On CR 213, average daily counts decreased from 2014 to 2019. Based on consistent oil and gas activities in the area, a continued decrease in traffic numbers is not anticipated. As a result, 2023 traffic volumes along CR 213 are estimated to be no less than the 2019 volumes. Projections of annual percentage increased from 2019 could not be determined at the time of this report.

Table 1: Garfield County Traffic Count Studies – Average Daily County (ADC)

| County Road | Road Name | 2014 ADC Actual | 2019 ADC Actual | 2023 ADC Estimated |
|-------------|-----------------|--------------------|--------------------|-----------------------|
| CR 204 | Roan Creek Road | 285 | 310 | 330 |
| CR 213 | Conn Creek Road | 194 | 144 | 144 |

TRIP GENERATION AND DISTRIBUTION

The Applicant/Operator provided vehicles necessary for activities and operations for the proposed site. Operations will be conducted in 8 stages at the CC 0697-15-08: initial grading activities, drill rig mobilization, drilling, completions, production, inspections, interim reclamation, and final grading/reclamation of the site. Stages may occur simultaneously at the

site but in different areas. Based on current projections and previous transportation for well sites, Laramie provided the number of trips that will be generated by drilling and operating the CC 0697-15-08.

Vehicles will access the site during all activity stages. Sampling and inspection (stormwater, noxious weeds, housekeeping) activities will be conducted by personnel performing similar activities at other facilities in the field, so these trips would currently be accounted for within the background traffic volume. Vehicles accessing the site from other locations with Laramie’s Cascade Creek operations area will be addressed in the **Table 4. Trip Generation - Total Trips on Laramie Private Access Roads Per Activity – CC 0697-15-08.**

Initial Grading and Construction Activities

The undisturbed location will be graded and constructed for a well site. Vehicle activities during initial grading activities will consist of (2) pickup trucks per day and three (3) mobilizations of excavation and equipment. The excavator will be mobilized to the site and remain on-site until initial grading and site construction are completed. Pickup trucks will access the site from public roads and grading equipment will be mobilized from another proposed well site from within the Cascade Creek field. Initial grading activities will take up to 30 days to complete.

Drill Rig Mobilization

The drill rig that will be utilized at the CC 0697-15-08 will be mobilized to the Cascade Creek operations area from Interstate 70. Any overweight transportation permits will be filed and obtained by the transportation company.

The rig mobilization will take approximately 4 days to complete. Vehicles will access the site from public access roads and within the Cascade Creek field. Vehicle activities during drill rig mobilization will consist of large equipment transportation vehicles, grading equipment, and pick-up trucks. Vehicles per days are stated in **Table 3 and Table 4.** The rig will be mobilized to the site and remain on-site until drilling activities are completed.

Drilling Activities

Drilling will take approximately 110 days to complete. Laramie is proposing 18 wells at the CC 0697-15-08 well site. Vehicles will access the site from public access roads and within the Cascade Creek field. Vehicle activities during drilling will consist of large equipment transportation vehicles, water trucks, construction equipment and pick-up trucks. Construction/grading equipment will be mobilized from within the Cascade Creek field. The total number of large transportation vehicles from public access roads will be 274 trips.

Completion and Flowback Activities

Completions and Flowback activities will occur in occupations. Each occupation will consist of completions activities for 6 wells, resulting in 3 occupations for the proposed 18 wells. Completions and flowback operations will occur concurrently at the location. Completions activities will take place during day-light hours (1 shift) and flowback activities will occur continuously (2 shifts). Below is an estimated timeline of completions and flowback activities:

Table 2: Completions and Flowback Time Interval and Stages

| Stage | Time Interval (Days) | Details of Activities |
|--|----------------------|--|
| Initial Staging for Completions and Flowback | 10 | Initial mobilization and set up for completions and flowback equipment. Occurs once prior to the commence of completions and flowback. Traffic numbers are averaged for this activity. |
| 1 st Occupation | 12 | 6 wells. Completions and flowback operations occurring during this stage. 2 days per well to frack, resulting in 12 days total for this stage. |
| Drill Out/Run Tubing | 10 | Approximately 1.5 days per well. Flowback activities will occur during the drill out stage. |
| 2 nd Occupation | 12 | 6 wells. Completions and flowback operations occurring during this stage. 2 days per well to frack, resulting in 12 days total for this stage. |
| Drill Out/Run Tubing | 10 | Approximately 1.5 days per well. Flowback activities will occur during the drill out stage. |
| 3 rd Occupation | 12 | 6 wells. Completions and flowback operations occurring during this stage. 2 days per well to frack, resulting in 12 days total for this stage. Final completions operations. |
| Drill Out/Run Tubing | 10 | Approximately 1.5 days per well. Flowback activities will occur during the drill out stage. Final flowback operations. |
| Takedown | 10 | Removal of equipment and de-mobilization. Equipment is transported off location. |

The total timeframe for completions and flowback phase is 86 days; however, only 36 days will have completion activities. Flowback will occur for 66 days. Initial staging and de-mobilization will take approximately 20 days.

Vehicles will access the site from public access roads and within the Cascade Creek field. Vehicle activities during the completions/flowback phase will consist of large equipment transportation vehicles, construction equipment, water trucks, and pick-up trucks. Construction equipment will be mobilized from within the Cascade Creek field. During this phase, large equipment transportation vehicles will access public roads during mobilization (transportation to the site) and de-mobilization (transportation off the location). While mobilization and de-mobilization of equipment are estimated to occur for 20 days, transportation of completions and flowback equipment may occur at any period during this operation phase depending on equipment needs and availability. During mobilization, an estimate 135 large trucks will transport equipment to the CC 0697-15-08 well site, resulting in 270 large vehicles trips accessing public roads. Large vehicles will consist, but not limited to, of transporting frac equipment, workover rig, wireline equipment, and production tubing.

Approximately 806 pickup trucks will access the site from public roads during completions and flowback (66 days) operations, resulting in 1612 vehicle trips.

Production Activities

Production activities will occur continuously after completions/flowback and prior to final reclamation, during the lifetime of the site. The subject well site will be accessed once daily by a pickup truck during the production stage, resulting in 2 trips per day. Pumpers visit several producing well sites per day; therefore, the vehicle will access the site from within the Cascade Creek field. Pumpers may conduct some inspection tasks during the site visit.

Interim Reclamation Activities

Interim reclamation activities will take approximately 5 days to complete. Vehicles will access the site from within the Cascade Creek field and public access. Vehicles utilized during interim activities will consist of grading equipment and pick-up trucks. Three (3) pieces of grading equipment will be mobilized from within the Cascade Creek field. Ten (10) pickup trucks will access the CC 0697-15-08 from public access roads during this activity.

Inspection Activities

Inspection activities will occur throughout operations at the site and will coincide with other stages. Inspection activities will vary and may include (but not limited to): noxious weed and stormwater inspections, government agency compliance inspections, housekeeping, maintenance, and sampling. Vehicles will access the site from within the Cascade Creek field. Vehicles will access the site during all activity stages. Sampling and inspection (stormwater, noxious weeds, housekeeping) activities will be conducted by personnel performing similar activities at other facilities/locations in the field, so these trips would currently be accounted for within the background traffic volume. On average, Laramie anticipates about 15 pickup trucks monthly to access the site, resulting in 30 trips and averaging to 1 VPD. Some inspection activities may be conducted during pumper visit as stated in the production phase.

Reclamation/ Final Grading Activities

At this time of this Traffic Summary Report, Laramie does not have a timeline for reclamation activities. On average in the Cascade Creek operations area, a well site may be produced for 30 years. Reclamation standards at the time of closure will influence vehicular traffic and timeline associated with reclamation activities. Laramie anticipates that vehicles will access the site from public access roads and within the Cascade Creek field. Vehicle activities utilized during final reclamation activities will consist of large equipment transportation vehicles, grading equipment, and pick-up trucks.

CC 0697-15-08 Well Site Trips

The following **Table 3** summarizes the expected average VPD and maximum trips per activity for the operational life of the well site that will access site solely from public roads. Trips reflect a vehicle accessing the site from a public road (one-trip) and vehicle leaving the site to access a public road (one-trip); therefore, one vehicle, round-trip, will count as “2” trips on the table below. For example, for the completions and flowback staging and de-mobilization stage, 5 pick-up trucks will access the site daily, resulting in 10 trips accessing public roads.

Table 3: Trip Generation – Total Trips on Public Roads Per Activity – CC 0697-15-08

| Stage | Time Interval (Days) | Large Equipment Transportation Vehicles Trips (including tractor trailers) <i>Per Activity</i> | Grading/ Construction Equipment Mobilization Trips <i>Per Activity</i> | Pickup Trucks Trips <i>Per Day</i> | Total Maximum Trips Generated on Public Access Roads <i>Per Activity</i> | Average VPD Per Activity |
|---|----------------------|--|--|------------------------------------|--|--------------------------|
| Initial Grading and Construction Activities | 30 | - | - | 4 | 120 | 4 |
| Drill Rig Mobilization | 4 | 86 | 22 | 20 | 188 | 47 |
| Drilling | 110 | 274 | - | 14 | 1814 | 16.4 |
| Completions and Flowback Staging and Demobilization | 20 | 270 | - | 10 | 470 | 23.5 |
| Completions; Flowback | 66 | - | - | 24.4 | 1612 | 24.4 |
| Production | - | - | - | - | - | - |
| Interim Reclamation | 5 | - | - | 4 | 20 | 4 |
| Inspections* | - | - | - | - | - | - |

* Activities (including but not limited to sampling): weed and stormwater inspections, maintenance, housekeeping.

The following **Table 4** summarizes the expected average VPD and maximum trips per activity for the operational life of the well site that will access site solely from other sites within the Cascade Creek operations area. Trips reflect a vehicle accessing the site from a private access road (one-trip) and vehicle leaving the site to access another Oil & Gas Location (one-trip); therefore, one vehicle, round-trip, will count as “2” trips on the table below. For example, for production, 1 pick-up truck will access the site daily, resulting in 2 trips accessing the site-specific access road. For site-specific activities such as mobilizing grading equipment or water truck transportation within the Cascade Creek operations, the transportation of personnel to the CC 0697-15-08 from public roads is already accounted for in **Table 3**. For inspections and production stages, activities will be conducted by personnel performing similar activities at other facilities in the operations area; therefore, these trips would currently be accounted for within the background traffic volume.

**Table 4: Trip Generation – Total Trips on Laramie Private Access Roads Per Activity –
CC 0697-15-08**

| Stage | Time Interval (Days) | Large Equipment Transportation Vehicles Trips (including tractor trailers) <i>Per Activity</i> | Grading/ Construction Equipment Mobilization Trips <i>Per Activity</i> | Pickup Trucks Trips <i>Per Day</i> | Total Maximum Trips Generated <i>Per Activity</i> | Average VPD <i>Per Activity</i> |
|---|----------------------|--|--|------------------------------------|---|---------------------------------|
| Initial Grading and Construction Activities | 30 | - | 6 | - | 4 | 0.1 |
| Drill Rig Mobilization | 4 | 10 | - | - | 10 | 2.5 |
| Drilling | 110 | 600 | 26 | - | 626 | 5.7 |
| Completions and Flowback Staging and Demobilization | 20 | 76 | 16 | - | 92 | 4.6 |
| Completions; Flowback | 66 | - | 18 | - | 18 | 0.3 |
| Production | - | - | - | 2 | - | 2 |
| Interim Reclamation | 5 | 6 | - | - | 6 | 1.2 |
| Inspections* | - | - | - | 1 | - | 1 |

* Activities (including but not limited to): sampling, weed and stormwater inspections, maintenance, housekeeping.

Laramie anticipates that the well site will remain in production for approximately 30 years, based on the average lifespan of a well site within the Cascade Creek operating field. Activities associated with the proposed location vary in time interval and VPD.

Access from Public Roads

The first 230 days of the proposed site’s operations will incur the most vehicular trips, encompassing initial grading, drilling, completions, and flowback activities. In the first 230 days of operation, the average VPD per activity during this period will range from 4 to 47 vehicles accessing the site from public roads.

Interim reclamation will be completed within 5 days and will occur after completions and during the production phase. During the production phase of the well site, vehicular traffic will reduce to an average of 3 VPD trips (production and inspections) accessing the site from other locations within the Cascade Creek operating field.

The total of average trips generated over the lifespan of the CC 0697-15-08 is not an appropriate measure of traffic patterns since most vehicular trips will occur during the first 230 days and the



site will operate for approximately 30 years. During initial operations of the proposed site, the maximum average VPD per activity accessing the site from public roads will be 47, but for only 4 days during drill rig mobilization. During the first 230 days (pre-production activities), the site will generate an average VPD of 18.4 trips on public roads.

County Road 204 – Roan Creek Coad - Initial 230 Days of Construction

Based on the background traffic calculations, the CC 0697-15-08 related traffic will have an average of 5.6% increase on daily traffic activity during the initial 230 days of operations on CR 204. The following **Table 5** summarizes the expected percentage of trips this well site will generate on CR 204 during the initial 230 days of operating the proposed CC 0697-15-08 well site.

Table 5: CR 204 Trip Distribution- Initial 230 Days of Pre-Production Phases – CC 0697-15-08

| Year | CR 204 VPD | Year | CR 204 VPD (Estimated) | Generated Average Operations Trips/Day | Generated Percent of Trips/Day Average |
|------|------------|------|------------------------|--|--|
| 2019 | 310 | 2023 | 330 | 18.4 | 5.6% |

County Road 204 – Roan Creek Coad – Production Phase

Based on the background traffic calculations, Laramie’s CC 0697-15-08 related traffic will not cause an increase of traffic during the production phase (lifespan) of operations on CR 204. The site will be accessed from personnel already performing production and inspection tasks within the Cascade Creek field. The following **Table 6** summarizes the expected percentage of trips this well site will generate on CR 204 during the production phase.

Table 6: CR 204 Trip Distribution- Production Phase – CC 0697-15-08

| Year | CR 204 VPD | Year | CR 204 VPD (Estimated) | Generated Average Operations Trips/Day | Generated Percent of Trips/Day Average |
|------|------------|------|------------------------|--|--|
| 2019 | 310 | 2023 | 330 | 0 | 0 % |

County Road 213 – Conn Creek Road - Initial 230 Days of Construction

Based on the background traffic calculations, Laramie’s CC 0697-15-08 related traffic will have an average of 12.8% increase on daily traffic activity during the initial 230 days of operations of the well site on CR 213. **Table 7** summarizes the expected percentage of trips this well site will generate on CR 213 during the initial 230 days of operating the proposed CC 0697-15-08 well site.

Table 7: CR 213 Trip Distribution - Initial 230 Days of Construction – CC 0697-15-08

| Year | CR 213 VPD | Year | CR 213 VPD (Estimated) | Generated Average Operations Trips/Day | Generated Percent of Trips/Day Average |
|------|------------|------|------------------------|--|--|
| 2019 | 144 | 2023 | 144 | 18.4 | 12.8 % |

County Road 213 – Conn Creek Road – Production Phase

Based on the background traffic calculations, Laramie’s CC 0697-15-08 related traffic will not cause an increase of traffic during the production phase (lifespan) of operations on CR 213. The site will be accessed from personnel already performing production and inspection tasks within the Cascade Creek field at other locations. **Table 8** summarizes the expected percentage of trips this well site will generate on CR 213 during the production phase.

Table 8: CR 213 Trip Distribution – Production Phase – 0697-15-08

| Year | CR 213 VPD | Year | CR 213 VPD (Estimated) | Generated Average Operations Trips/Day | Generated Percent of Trips/Day Average |
|------|------------|------|------------------------|--|--|
| 2019 | 144 | 2023 | 144 | 0 | 0 % |

ROADWAY ANALYSIS

Existing Parcel

Current land use on the subject parcel is primarily natural gas development. The majority of existing traffic on CR 213 is related to natural gas development activities and very limited agricultural activities.

State Highway Crossings and Access

The roadway access to this site does not cross any highway right-of-ways managed by the Colorado Department of Transportation. CR 204 is accessed via Mesa County 45 Road which intersects I-70 at Exit 62 in DeBeque, Colorado. This grade-separated interchange access point is controlled by stop signs at the top of each exit ramp. Site distances are adequate in both directions at these control points.

The US Highway 6 / I-70 Frontage Road terminates at Mesa County 45 Road approximately 300 feet northwest of the DeBeque interchange. This intersection is two-way stop controlled. Traffic traveling to this site from I-70 would have the right-of-way at this intersection.

Railroad Crossings

Mesa County 45 Road crosses under a main railroad line approximately 0.5 miles north of I-70. This line is generally used for the transport of freight, coal, and passenger rail traffic. This railroad crossing is grade separated. Clearance for transport trucks under this railroad bridge is adequate. The roadway access to this site does not cross any other active railroad right-of-way.

Intersection of CR 204 & 213

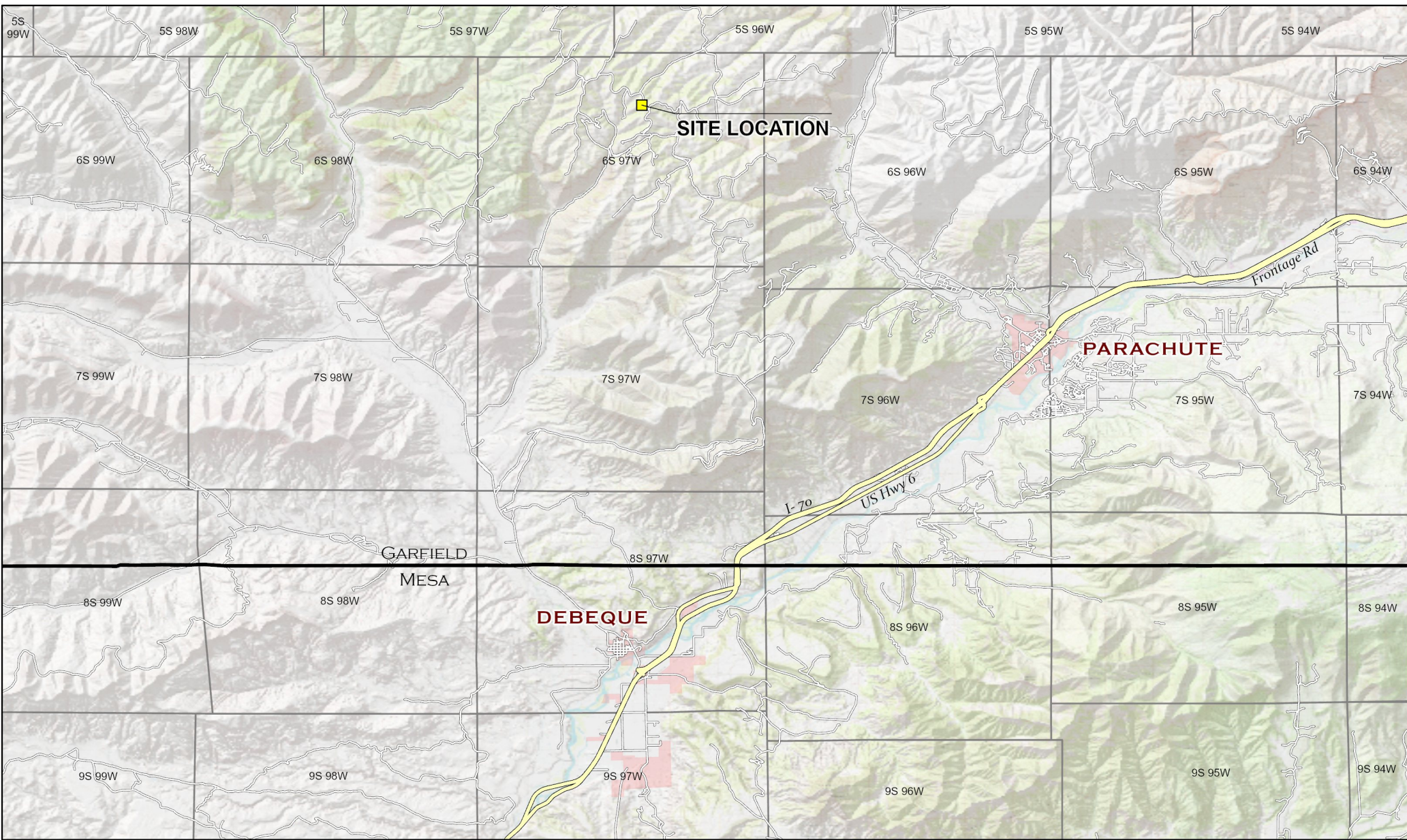
As noted above, there is a deceleration/turn lane for north bound traffic on CR 204 turning right onto CR 213. A stop sign controls west bound traffic on CR 213 at the intersection of that road with CR 204.



SUMMARY

Based on the expected trip generation rates discussed above, average daily traffic will increase during the initial 230 days of site operations. Production and inspection activities are not expected to increase traffic on public roads. The increase in average daily traffic during the site's lifespan is not expected to be significant on roads generally used by the public. CR 204 and CR 213 will see only a temporary increase in traffic during the initial development, pre-production phases of the site. Long-term traffic impacts are not anticipated from the development of the CC 0697-15-08.

Garfield County does not require impact fees for the area or the proposed use. Garfield County impact road fees are based on interior square footage of building development and must be located within a benefit district. The proposed well site will not have a building associated with the site and is not located within a benefit district.



LEGEND

■ Site Location

0 3.5 7
 ──────────────────── mi
 1 inch = 3.5 mi

| | |
|-------------|-----------|
| Project No: | 021-037 |
| Map By: | NDB |
| Date: | 4/12/2021 |

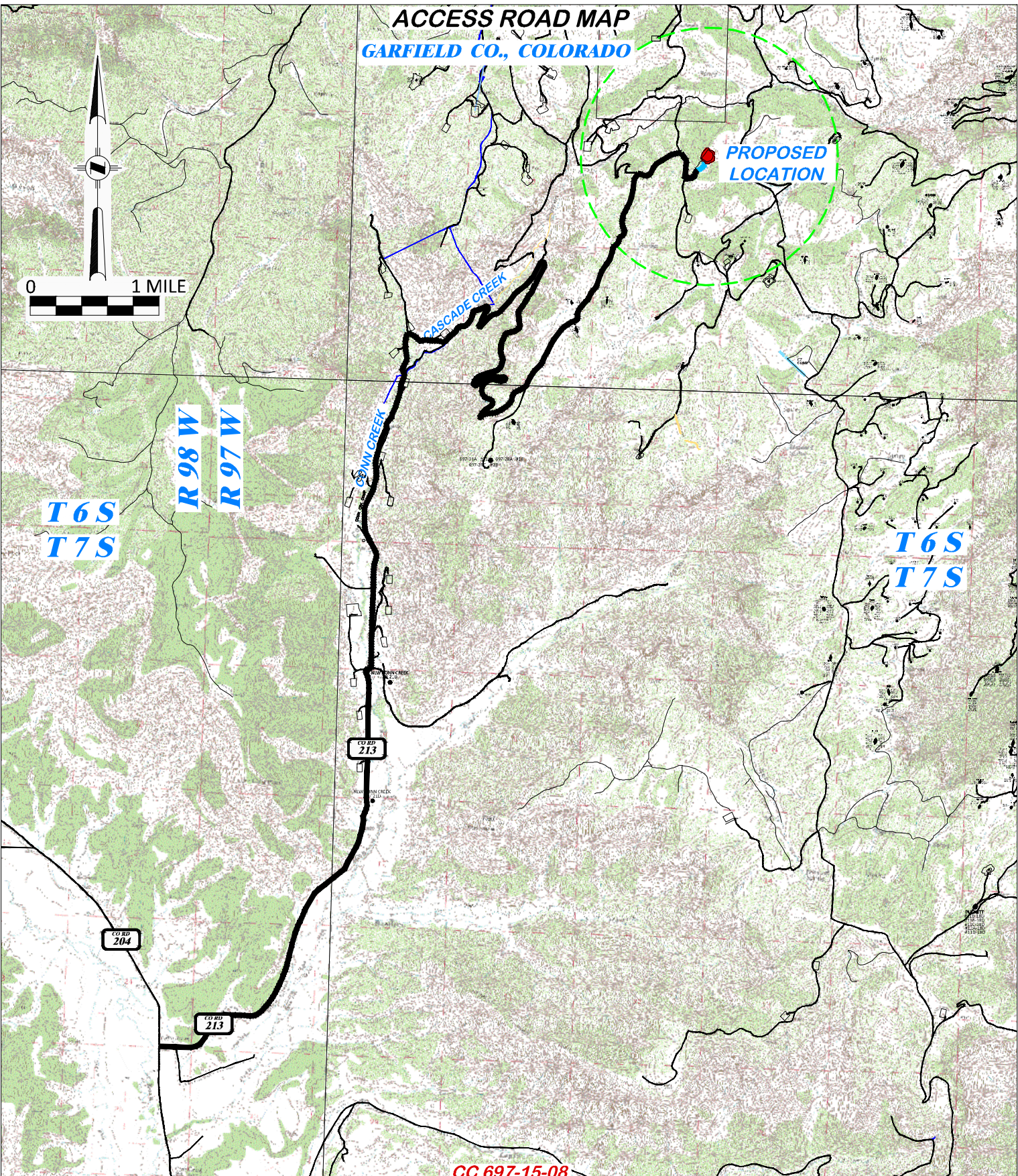
Vicinity Map
 Cascade Creek 610-21-41 Pad
 Laramie Energy
 NENW, Section 10, T6S R97W, 6th P.M.
 Garfield County, Colorado

ENTRADA
 CONSULTING GROUP

330 Grand Avenue, Unit C
 Grand Junction, CO 81501
 970-549-1015

| |
|--------|
| Figure |
| 1 |

ACCESS ROAD MAP
GARFIELD CO., COLORADO



CC 697-15-08

ACCESS ROAD MAP

LARAMIE ENERGY, LLC.
CC 697-15-08

**SENE, SECTION 15, T. 6 S., R. 97 W., 6th P.M.,
 GARFIELD COUNTY, COLORADO**

DRG RIFFIN & ASSOCIATES, INC.
 (307) 362-5028 1414 ELK ST., ROCK SPRINGS, WY 82901

DRAWN: 12/8/2020 - DEH

SCALE: 1" = MILE

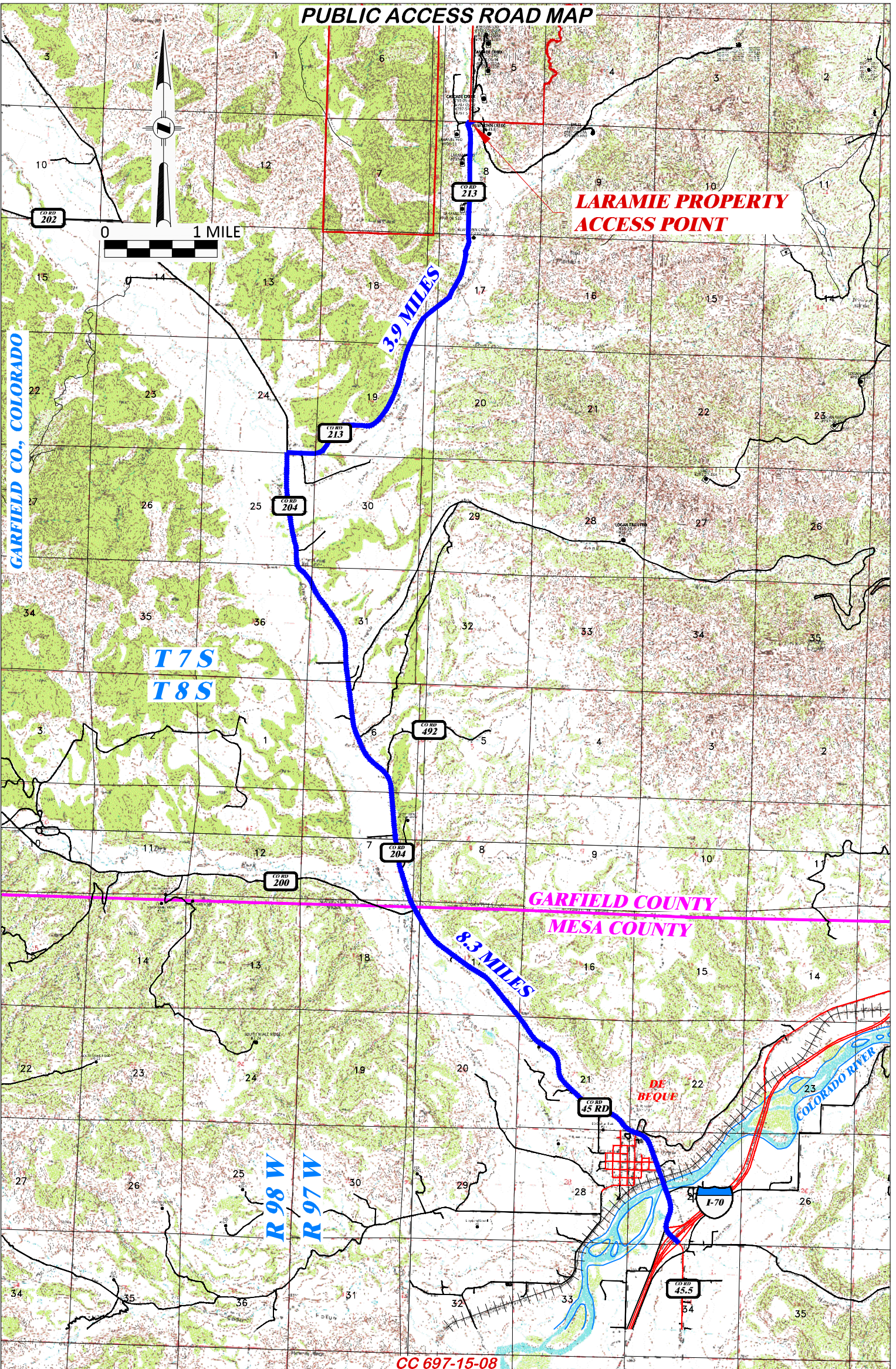
REVISED: N/A -

DRG JOB No. 22026

08 ACCESS

PROPOSED ACCESS — — EXISTING ROAD **—**

PUBLIC ACCESS ROAD MAP



CC 697-15-08

PUBLIC ACCESS ROAD MAP

LARAMIE ENERGY, LLC.
CC 697-15-08

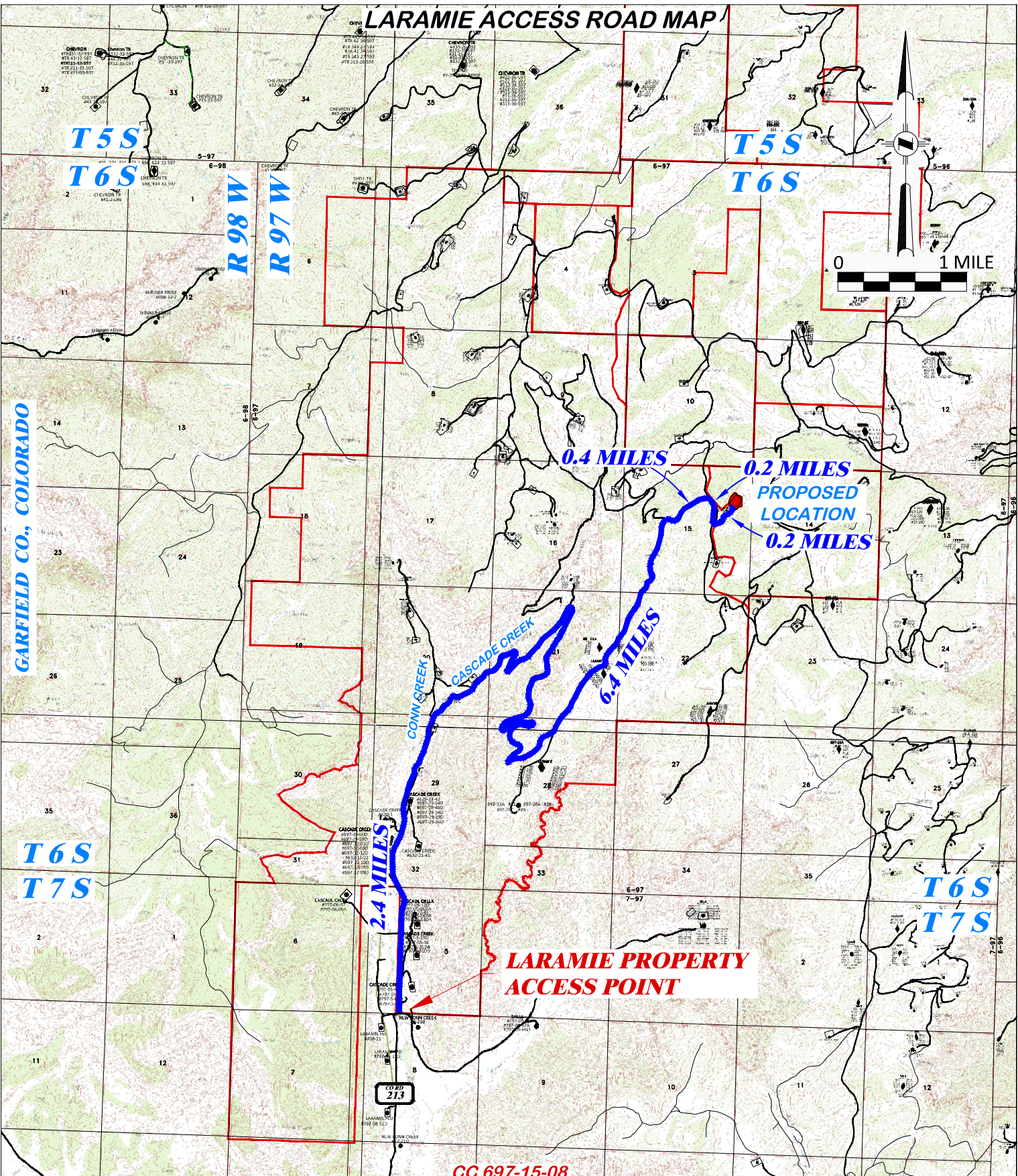
**SENE, SECTION 15, T. 6 S., R. 97 W., 6th P.M.,
GARFIELD COUNTY, COLORADO**

DRG RIFFIN & ASSOCIATES, INC.
(307) 362-5028 1414 ELK ST., ROCK SPRINGS, WY 82901

| | |
|--------------------------|-------------------|
| DRAWN: 12/8/2020 - DEH | SCALE: 1" = MILE |
| REVISED: 3/23/2021 - DEH | DRG JOB No. 22026 |
| | 08 PUB ACCESS |

PROPOSED ROUTE █ EXISTING ROAD █

LARAMIE ACCESS ROAD MAP



CC 697-15-08

DRG RIFFIN & ASSOCIATES, INC.
 (307) 362-5028 1414 ELK ST., ROCK SPRINGS, WY 82901

LARAMIE ACCESS ROAD MAP

LARAMIE ENERGY, LLC.
CC 697-15-08
SENE, SECTION 15, T. 6 S., R. 97 W., 6th P.M.,
GARFIELD COUNTY, COLORADO

DRAWN: 12/8/2020 - DEH
 REVISED: 3/23/2021 - DEH

SCALE: 1" = MILE
 DRG JOB No. 22026

08 LARAMIE ACCESS

PROPOSED ROUTE █ EXISTING ROAD █

Garfield County Road Traffic Counts

| Road # | Road Name | Location | Date | Avg. Daily Count | Date | Avg. Daily Count |
|--------|------------------------|--------------------------------------|-----------|-------------------|-----------|-------------------|
| | | | 2014 | | 2019 | |
| 100 | CATHERINE STORE RD | Carbondale Side | 9/18/2013 | 3,142 | 7/2/2019 | 4,589 |
| 100 | CATHERINE STORE RD | at 25 MPH Speed Sign | 9/24/2014 | 1,353 | 4/23/2019 | 1,240 |
| 101 | WHITE HILL RD | Beginning of Road | 8/20/2014 | 432 | N/A | No Data Collected |
| 102 | MISSOURI HEIGHTS | Beginning of Road | 5/22/2014 | 476 | 6/24/2019 | 762 |
| 103 | CRYSTAL SPRINGS RD | Above Weight Limit Sign | 5/13/2014 | 1,020 | 6/19/2019 | 1,759 |
| 104 | BLUE RD | Beginning of Road | NA | No Data Collected | 6/19/2019 | 235 |
| 105 | CERISE RD | Beginning of Road | 5/13/2014 | 78 | 6/19/2019 | 105 |
| 106 | SATANK RD | HWY 82 Side | 8/20/2014 | 531 | 6/24/2019 | 404 |
| 106 | SATANK RD | Carbondale side by end of Road | NA | No Data Collected | 6/13/2019 | 652 |
| 107 | RED HILL RD | Beginning of Road | 5/22/2014 | 207 | 6/19/2019 | 331 |
| 108 | THOMPSON CREEK RD | By Carbondale | 8/20/2014 | 391 | 6/13/2019 | 1,989 |
| 109 | HARDWICK BRIDGE RD | By the Bridge | 6/30/2014 | 1,153 | 6/13/2019 | 2,876 |
| 110 | OLD DUMP RD | Beginning of Road - By Cattle Creek | 5/13/2014 | 548 | 6/11/2019 | 1,328 |
| 111 | PRINCE CREEK RD | Beginning of Road | 6/30/2014 | 872 | 6/13/2019 | 973 |
| 112 | CRYSTAL SPRINGS MTN RD | Cattle Creek Side | 5/13/2014 | 280 | N/A | No Data Collected |
| 112 | CRYSTAL SPRINGS MTN RD | CR 103 Side | NA | No Data Collected | 6/19/2019 | 640 |
| 113 | CATTLE CREEK RD | Beginning of Road - By Storage Units | 5/13/2014 | 815 | 6/11/2019 | 928 |
| 113 | CATTLE CREEK RD | Above Upper Cattle Creek | NA | No Data Collected | 6/27/2019 | 330 |
| 114 | CMC RD | Beginning of Road - By Storage Units | 5/13/2014 | 1,408 | 6/11/2019 | 2,135 |
| 115 | RED CANYON RD | Beginning of Road | 5/13/2014 | 249 | 6/11/2019 | 345 |
| 115 | RED CANYON RD | 1/2 Way | 6/30/2014 | 184 | N/A | No Data Collected |
| 117 | FOUR MILE RD | Beginning of Road | 2/24/2014 | 2,648 | 5/28/2019 | 2,878 |
| 117 | FS 300 | Beginning of FS 300 | NA | No Data Collected | 6/5/2019 | 115 |
| 117A | SUNLIGHT VILLAGE DRIVE | Beginning of Road | 6/30/2014 | 197 | 6/5/2019 | 260 |

| | | | | | | |
|-----|-----------------------|-----------------------------|-----------|-------------------|-----------|-------------------|
| 118 | Mt SOPRIS RANCH ROAD | No Data Collected | NA | No Data Collected | NA | No Data Collected |
| 119 | KINDALL RD | Beginning of Road | 5/22/2014 | 149 | 6/27/2019 | 249 |
| 120 | LOOKOUT MOUNTAIN RD | Beginning of Road | 8/20/2014 | 119 | 6/27/2019 | 116 |
| 121 | COULTER CREEK RD | Beginning of Road by CR 113 | 5/13/2014 | 38 | 6/27/2019 | 49 |
| 122 | UPPER CATTLE CREEK RD | Beginning of Road | 5/7/2014 | 84 | 6/27/2019 | 279 |
| 123 | MARION CEMETERY RD | No Data Collected | NA | No Data Collected | NA | No Data Collected |
| 124 | MARION MINE RD | Beginning of Road | 8/20/2014 | 29 | 6/24/2019 | 46 |
| 125 | DRY PARK RD | Four Mile Side | 3/26/2013 | 177 | 6/5/2019 | 609 |
| 125 | DRY PARK RD | East End | 5/21/2014 | 216 | 6/24/2019 | 406 |
| 126 | BLACK DIAMOND MINE RD | At 25 MPH Sign | 8/20/2014 | 100 | 6/5/2019 | 122 |
| 127 | THREE MILE RD | Beginning of Road | 8/20/2014 | 526 | 5/28/2019 | 792 |
| 129 | NO NAME LN | Lower Portion | 3/11/2013 | 139 | 6/3/2019 | 704 |
| 129 | NO NAME LN | Upper Portion | NA | No Data Collected | 6/3/2019 | 247 |
| 130 | DONEGAN RD | Bridge | 9/18/2013 | 341 | N/A | No Data Collected |
| 130 | DONEGAN RD | By Pinon Drive | NA | No Data Collected | 6/3/2019 | 2,002 |
| 132 | MITCHELL CREEK RD | Donegan Intersection | 5/22/2014 | 234 | 7/9/2019 | 290 |
| 133 | MEL RAY RD | Beginning of Road | 5/22/2014 | 920 | 6/3/2019 | 2,361 |
| 134 | S CANYON CREEK RD | Beginning of Road | 5/22/2014 | 461 | 6/23/2019 | 672 |
| 136 | ROCKIN PINES RANCH RD | No Data Collected | NA | No Data Collected | NA | No Data Collected |
| 137 | CANON CREEK RD | Beginning of Road | 5/22/2014 | 300 | 5/23/2019 | 238 |
| 138 | SLAUGHTERHOUSE RD | By the Church | 8/20/2014 | 32 | 5/23/2019 | 43 |
| 140 | COFFEE POT RD | No Data Collected | NA | No Data Collected | NA | No Data Collected |
| 141 | HEART LAKE RD | No Data Collected | NA | No Data Collected | NA | No Data Collected |
| 142 | BISON LAKE RD | No Data Collected | NA | No Data Collected | NA | No Data Collected |
| 143 | DEEP LAKE CAMPGROUND | No Data Collected | NA | No Data Collected | NA | No Data Collected |
| 144 | DEEP LAKE EAST RD | No Data Collected | NA | No Data Collected | NA | No Data Collected |
| 145 | TRAPPERS LAKE CG RD | No Data Collected | NA | No Data Collected | NA | No Data Collected |
| 146 | INDIAN CAMP RD | No Data Collected | NA | No Data Collected | NA | No Data Collected |

| | | | | | | |
|------|------------------------|--------------------------------|-----------|-------------------|-----------|-------------------|
| 148 | PONDEROSA DR | Beginning of Road | 5/22/2014 | 802 | N/A | No Data Collected |
| 149 | CHELYN RD | Beginning of Road | 6/30/2014 | 204 | 5/28/2019 | 262 |
| 149A | VAN DORN RD | Beginning of Road | 6/30/2014 | 145 | N/A | No Data Collected |
| 150 | SWEETWATER LAKE RD | Beginning of Road | 9/16/2014 | 157 | 7/9/2019 | 216 |
| 151 | SWEETWATER COW CAMP RD | Bridge | 9/18/2013 | 105 | 7/9/2019 | 226 |
| 153 | BIG FOUR RD | Beginning of Road | 6/30/2014 | 59 | N/A | No Data Collected |
| 154 | OLD HIGHWAY 82 | Intersection OH 82 & Hwy 82 | 3/26/2014 | 1,738 | 6/13/2019 | 2,518 |
| 154 | OLD HIGHWAY 82 | Beginning by Cemetery | NA | No Data Collected | 6/3/2019 | 1,325 |
| 155 | TRAPPERS LAKE RD | No Data Collected | NA | No Data Collected | NA | No Data Collected |
| 157 | COAL CREEK RD | No Data Collected | NA | No Data Collected | NA | No Data Collected |
| 158 | RAMS HORN LAKE RD | No Data Collected | NA | No Data Collected | NA | No Data Collected |
| 159 | BEAR RIVER RD | No Data Collected | NA | No Data Collected | NA | No Data Collected |
| 161 | N. KINGS ROW AV | West End | 5/22/2014 | 147 | 7/2/2019 | 145 |
| 161 | S. KINGS ROW | East End | 5/22/2014 | 158 | 7/2/2019 | 173 |
| 162 | LA CASITA RD | Beginning of Road | 5/22/2014 | 138 | 7/2/2019 | 228 |
| 163 | PREHM RD | Beginning of Road | 6/30/2014 | 114 | 5/28/2019 | 209 |
| 165 | MOUNTAIN MEADOW DR | No Data Collected | NA | No Data Collected | NA | No Data Collected |
| 166 | 166 | No Data Collected | NA | No Data Collected | NA | No Data Collected |
| 167 | CORYELL RD | Beginning of Road | 7/17/2013 | 133 | 6/11/2019 | 572 |
| 168 | SUN KING DR | Beginning of Road | 6/30/2014 | 333 | 6/5/2019 | 308 |
| 168A | OAK WY | By the Bridge | 6/30/2014 | 503 | 6/5/2019 | 501 |
| 169 | CEDAR CREST DR | No Data Collected | NA | No Data Collected | NA | No Data Collected |
| 170 | PANORAMA DR | Beginning of Road | 8/20/2014 | 231 | 7/2/2019 | 368 |
| 177 | TANAGER DR | No Data Collected | NA | No Data Collected | NA | No Data Collected |
| 181 | STORM KING RD | Above the Mall at Center Drive | NA | No Data Collected | 5/23/2019 | 1,539 |
| 184 | S 16th Street | Beginning of Road | NA | No Data Collected | 8/15/2019 | 393 |
| 190 | LIONS RIDGE | Beginning of Road | NA | No Data Collected | 8/13/2019 | 268 |
| 198 | W 2ND ST | Beginning of Road | 7/7/2014 | 357 | 8/15/2019 | 311 |

| | | | | | | |
|-----|----------------------|--------------------------------|-----------|-------------------|-----------|-------------------|
| 200 | N DRY FORK RD | By the Bridge | 9/19/2013 | 129 | 8/28/2019 | 106 |
| 201 | BAXTER PASS RD | By the Bridge | 9/24/2013 | 141 | 9/12/2019 | 49 |
| 202 | KIMBALL CREEK RD | Beginning of Road | 7/23/2014 | 25 | 8/28/2019 | 39 |
| 203 | OLD CR 211 | No Data Collected | NA | No Data Collected | NA | No Data Collected |
| 204 | ROAN CREEK RD | Beginning of Road | 7/24/2014 | 285 | 8/28/2019 | 310 |
| 205 | SALT WASH | No Data Collected | NA | No Data Collected | NA | No Data Collected |
| 206 | MITCHELL ROAD | No Data Collected | NA | No Data Collected | NA | No Data Collected |
| 207 | CARR CREEK RD | By the Bridge | 9/19/2013 | 18 | 8/28/2019 | 30 |
| 209 | BRUSH CREEK RD | Beginning of Road | 7/24/2014 | 27 | 8/28/2019 | 37 |
| 210 | MILE POND RD | Beginning of Road | 4/21/2014 | 1,283 | 8/6/2019 | 1,464 |
| 211 | CLEAR CREEK RD | Beginning of Road | 7/24/2014 | 43 | 8/28/2019 | 25 |
| 213 | CONN CREEK RD | Beginning of Road | 7/24/2014 | 194 | 8/28/2019 | 144 |
| 214 | PEACH VALLEY RD | By the Bridge | 9/10/2013 | 234 | 7/9/2019 | 460 |
| 214 | PEACH VALLEY RD | West End | NA | No Data Collected | 7/18/2019 | 1,213 |
| 215 | PARACHUTE CREEK RD | Beginning Before Railroad Xing | 7/24/2014 | 716 | 5/16/2019 | 1,282 |
| 216 | ANTONELLI LN | Beginning of Road | 4/21/2014 | 308 | 8/6/2019 | 540 |
| 217 | LITTLE BOX CANYON RD | By the Bridge | 9/9/2013 | 208 | 7/25/2019 | 408 |
| 219 | MIDDLE RIFLE CREEK | Beginning of Road | 7/8/2014 | 170 | 7/25/2019 | 122 |
| 220 | HAY CANYON ROAD | No Data Collected | NA | No Data Collected | NA | No Data Collected |
| 221 | GREEN LN | Beginning of Road | 4/21/2014 | 615 | 8/6/2019 | 907 |
| 222 | SOUTH DRY FORK RD | By the Bridge | 9/19/2013 | 161 | 8/28/2019 | 111 |
| 223 | PETERSON LN | Beginning of Road | 4/21/2014 | 1,393 | 8/6/2019 | 1,770 |
| 225 | ANTLERS LN | Beginning of Road | 4/21/2014 | 259 | 8/6/2019 | 364 |
| 226 | GRASS VALLEY RD | By the Bridge | 9/10/2013 | 275 | 7/25/2019 | 493 |
| 226 | GRASS VALLEY RD | East End | NA | No Data Collected | 7/17/2019 | 512 |
| 227 | MILLER LN | Beginning of Road | 4/21/2014 | 1,151 | 7/18/2019 | 1,111 |
| 228 | PRETTI LN | Beginning by CR 214 | 6/26/2014 | 175 | 7/10/2019 | 163 |
| 229 | UKELE LN | Beginning of Road | 4/21/2014 | 553 | 7/18/2019 | 645 |

| | | | | | | |
|------|-----------------------|---------------------------------|-----------|-------------------|-----------|-------------------|
| 230 | BAR HL RD | No Data Collected | NA | No Data Collected | NA | No Data Collected |
| 231 | N 1st Street | Beginning of Road | NA | No Data Collected | 7/29/2019 | 896 |
| 232 | LEFT FORK CARR CREEK | No Data Collected | NA | No Data Collected | NA | No Data Collected |
| 233 | SILT MESA RD EAST END | Beginning of Road | 4/21/2014 | 510 | 7/18/2019 | 990 |
| 233 | SILT MESA RD WEST END | Beginning of Road | 4/21/2014 | 225 | 8/15/2019 | 205 |
| 234 | BUTLER CREEK RD | No Data Collected | NA | No Data Collected | NA | No Data Collected |
| 235 | DAVIS POINT | Beginning by HWY 6 | 6/3/2014 | 308 | 7/10/2019 | 399 |
| 236 | HARNESS LN | Beginning of Road | 4/21/2014 | 205 | 7/18/2019 | 211 |
| 237 | HARVEY GAP RD | Beginning of Road | 6/3/2014 | 1,015 | 7/29/2019 | 1,204 |
| 238 | SLAUGHTER GULCH RD | Beginning of Road | 6/3/2014 | 46 | 7/10/2019 | 64 |
| 239 | KIMBALL MOUNTAIN RD | No Data Collected | NA | No Data Collected | NA | No Data Collected |
| 240 | BRUCE RD | Beginning West End | 6/3/2014 | 199 | 7/9/2019 | 235 |
| 241 | ELK CREEK RD | Beginning of Road | 5/13/2013 | 90 | 7/17/2019 | 437 |
| 242 | JQS RD | Beginning of Road | 6/3/2014 | 22 | NA | No Data Collected |
| 243 | MAIN ELK RD | Beginning of Road | 9/10/2013 | 120 | 7/17/2019 | 236 |
| 244 | FRAVERT RESERVOIR RD | Beginning of Road | 6/3/2014 | 540 | 8/15/2019 | 346 |
| 245 | BUFORD RD | Beginning of Road at New Castle | 6/3/2014 | 2,081 | 7/17/2019 | 1,826 |
| 246 | ANVIL POINTS RD | Past Cattle guard | 6/3/2014 | 466 | 5/16/2019 | 587 |
| 246A | LANDFILL RD | Beginning of Road | 6/3/2014 | 172 | 5/16/2019 | 198 |
| 247 | N CUTOFF RD | Beginning of Road | 9/2/2013 | 168 | 7/17/2019 | 247 |
| 248 | YELLOW SLIDE RD | Beginning of Road | 6/3/2014 | 49 | NA | No Data Collected |
| 249 | ROAN CLIFFS RD | Beginning of Road | 7/9/2014 | 19 | 8/15/2019 | 10 |
| 250 | BENDETTI RD | East End | 6/19/2014 | 328 | 7/10/2019 | 244 |
| 251 | N HASSE LN | Beginning of Road | 7/8/2014 | 101 | 8/5/2019 | 123 |
| 252 | WEST RIFLE CREEK RD | Beginning of Road | 7/8/2014 | 228 | Na | No Data Collected |
| 252 | WEST RIFLE CREEK RD | By Honor Camp | NA | No Data Collected | 7/25/2019 | 72 |
| 253 | PICEANCE CREEK RD | Beginning of Road | 7/8/2014 | 57 | 7/25/2019 | 99 |
| 254 | SAWMILL CANYON RD | No Data Collected | NA | No Data Collected | NA | No Data Collected |

| | | | | | | |
|------|----------------------|--------------------|-----------|-------------------|-----------|-------------------|
| 255 | FAA RD | No Data Collected | NA | No Data Collected | NA | No Data Collected |
| 256 | FOUR A RIDGE RD | No Data Collected | NA | No Data Collected | NA | No Data Collected |
| 257 | MESA DR | Beginning of Road | 7/8/2014 | 165 | 8/5/2019 | 191 |
| 258 | KING RD | No Data Collected | NA | No Data Collected | NA | No Data Collected |
| 259 | JEWELL LN | Beginning of Road | 6/19/2014 | 316 | 8/15/2019 | 359 |
| 260 | TIPPITT LN | Beginning of Road | 6/19/2014 | 188 | 8/6/2019 | 233 |
| 261 | GROFF LN | Beginning of Road | 6/19/2014 | 446 | 7/18/2019 | 514 |
| 261A | Ingersol Lane | Beginning of Road | NA | No Data Collected | 7/29/2019 | 94 |
| 262 | MID VALLEY LANE | Beginning by HWY 6 | NA | No Data Collected | 7/10/2019 | 348 |
| 263 | WEARE LANE | Beginning by HWY 6 | NA | No Data Collected | 7/10/2019 | 211 |
| 264 | SWALLOW LN | Beginning of Road | 7/8/2014 | 124 | 8/15/2019 | 36 |
| 265 | PREFONTAINE AV | Beginning of Road | 7/8/2014 | 1,130 | 8/15/2019 | 1,517 |
| 266 | ASGARD SUBDIVISION | No Data Collected | NA | No Data Collected | NA | No Data Collected |
| 267 | SKINNER RIDGE RD | No Data Collected | NA | No Data Collected | NA | No Data Collected |
| 268 | W BAXTER RIDGE RD | No Data Collected | NA | No Data Collected | NA | No Data Collected |
| 269 | E BAXTER RIDGE RD | No Data Collected | NA | No Data Collected | NA | No Data Collected |
| 270 | SCARROW RD | No Data Collected | NA | No Data Collected | NA | No Data Collected |
| 271 | TROJAN LN | No Data Collected | NA | No Data Collected | NA | No Data Collected |
| 272 | WIDOW SPRING RD | No Data Collected | NA | No Data Collected | NA | No Data Collected |
| 273 | COULTER LAKE RD | No Data Collected | NA | No Data Collected | NA | No Data Collected |
| 274 | THREE FORKS RD | No Data Collected | NA | No Data Collected | NA | No Data Collected |
| 275 | MANSFIELD CREEK RD | No Data Collected | NA | No Data Collected | NA | No Data Collected |
| 276 | W ELK STOCK DRIVEWAY | No Data Collected | NA | No Data Collected | NA | No Data Collected |
| 277 | MIDDLE MOUNTAIN | No Data Collected | NA | No Data Collected | NA | No Data Collected |
| 278 | CLARK RIDGE RD | No Data Collected | NA | No Data Collected | NA | No Data Collected |
| 279 | MINER SPRINGS | No Data Collected | NA | No Data Collected | NA | No Data Collected |
| 280 | MEADOW CREEK RD | No Data Collected | NA | No Data Collected | NA | No Data Collected |
| 281 | COW LAKE RD | No Data Collected | NA | No Data Collected | NA | No Data Collected |

| | | | | | | |
|------|-------------------------|---------------------------------|-----------|-------------------|-----------|-------------------|
| 282 | CLINETOP COW CAMP RD | No Data Collected | NA | No Data Collected | NA | No Data Collected |
| 283 | MARVIN RD | No Data Collected | NA | No Data Collected | NA | No Data Collected |
| 284 | HADLEY GULCH RD | No Data Collected | NA | No Data Collected | NA | No Data Collected |
| 286 | ATCHEE RD | No Data Collected | NA | No Data Collected | NA | No Data Collected |
| 287 | STOVE CANYON | No Data Collected | NA | No Data Collected | NA | No Data Collected |
| 289 | 289 | No Data Collected | NA | No Data Collected | NA | No Data Collected |
| 290 | FRAVERT RD | Beginning of Road | 6/3/2014 | 91 | NA | No Data Collected |
| 291 | STEPHENS HILL RD | Beginning of Road | 4/21/2014 | 190 | 8/5/2019 | 201 |
| 292 | LIMESTONE QUARRY RD | No Data Collected | NA | No Data Collected | NA | No Data Collected |
| 293 | N GRAHAM RD | Beginning of Road | 7/8/2014 | 1,358 | 8/15/2019 | 2,018 |
| 294 | S GRAHAM RD | End of Road by Y | NA | No Data Collected | 8/15/2019 | 878 |
| 296 | DOKES LN | Beginning of Road | 7/8/2014 | 151 | 8/5/2019 | 39 |
| 297 | WITTWER LANE | No Data Collected | NA | No Data Collected | 8/5/2019 | 53 |
| 298 | SMITH DOLL COAL MINE RD | No Data Collected | NA | No Data Collected | NA | No Data Collected |
| 30 | FOUR MILE PARK RD | No Data Collected | NA | No Data Collected | NA | No Data Collected |
| 300 | STONE QUARRY RD | By Fire Station | 4/30/2014 | 498 | 5/15/2019 | 6,263 |
| 300 | STONE QUARRY RD | By HWY 6 - Before Railroad Xing | NA | No Data Collected | 8/28/2019 | 505 |
| 300B | SPENCER PY | Beginning by Alpine Bank | 4/30/2014 | 2,360 | 4/29/2019 | 1,707 |
| 300C | SIPPRELLE DR | By the School | 4/30/2014 | 362 | 4/29/2019 | 324 |
| 300E | E BATTLEMENT PY | By the School | 4/30/2014 | 673 | 5/7/2019 | 735 |
| 300N | N BATTLEMENT PY | By the Bridge | 4/30/2014 | 6,840 | 5/7/2019 | 10,253 |
| 300O | OLD STONE QUARRY RD | Beginning of Road | 4/30/2014 | 238 | 4/29/2019 | 210 |
| 300S | S BATTLEMENT PY | By Kum and Go | 4/30/2014 | 1,880 | 5/7/2019 | 2,096 |
| 300W | W BATTLEMENT PY | By Crosswalk | 4/30/2014 | 4,771 | 5/7/2019 | 6,337 |
| 301 | MORRISANIA MESA RD | East End by CR 320 | 4/30/2014 | 253 | 4/22/2019 | 240 |
| 302 | UNDERWOOD LN | Beginning of Road by Cemetery | 4/30/2014 | 121 | 4/30/2019 | 127 |
| 303 | GARDNER LN | Beginning of Road by CR 3000 | 4/30/2014 | 467 | 4/30/2019 | 299 |
| 304 | RICHARDSON RD | Beginning of Road | 7/16/2014 | 420 | 5/15/2019 | 205 |

| | | | | | | |
|------|----------------------|--|-----------|-------------------|-----------|-------------------|
| 305 | GRAVEL PIT RD | No Data Collected | NA | No Data Collected | NA | No Data Collected |
| 306 | SPRING CREEK RD | Bottom of Road | 7/16/2014 | 177 | 5/16/2019 | 182 |
| 306 | WALLACE CREEK RD | Bottom of Road | 7/15/2014 | 341 | 5/16/2019 | 283 |
| 307 | RIVER BLUFF RD | Beginning of Road | 7/16/2014 | 265 | 4/30/2019 | 361 |
| 308 | FOUR CORNER RD | Beginning of Road Across from Sipperelle | 7/16/2014 | 358 | 4/29/2019 | 400 |
| 309 | RULISON-PARACHUTE RD | West End | 7/16/2014 | 255 | 4/18/2019 | 345 |
| 309 | RULISON-PARACHUTE RD | East End | NA | No Data Collected | 4/18/2019 | 230 |
| 310 | 310 | Beginning of Road | 9/16/2014 | 62 | 4/30/2019 | 87 |
| 311 | DIVIDE CREEK RD | Above CR 335 | 6/11/2014 | 1,352 | 3/26/2019 | 888 |
| 312 | GARFIELD CREEK RD | Bottom of Road | 9/2/2013 | 335 | 3/25/2019 | 166 |
| 313 | E DIVIDE CREEK RD | Beginning of Road by CR 311 | 6/11/2014 | 144 | 4/3/2019 | 113 |
| 314 | ALKALI CREEK RD | Lower Portion | 8/20/2014 | 166 | 3/25/2019 | 196 |
| 314 | ALKALI CREEK RD | Upper Portion | 9/4/2014 | 34 | NA | No Data Collected |
| 315 | MAMM CREEK RD | South of Airport Hill | 6/11/2014 | 803 | 3/26/2019 | 491 |
| 316 | KNUCKELS CREEK RD | West End | 6/11/2014 | 67 | 4/11/2019 | 31 |
| 317 | BEAVER CREEK RD | Beginning of Road | 9/16/2014 | 768 | 4/11/2019 | 102 |
| 317A | SCRIBNER LN | Beginning of Road | 9/16/2014 | 119 | 4/22/2019 | 32 |
| 318 | RIVER RD | No Data Collected | NA | No Data Collected | NA | No Data Collected |
| 319 | WEST MAMM CREEK RD | Beginning of Road | 6/11/2014 | 802 | 3/26/2019 | 831 |
| 320 | RIFLE-RULISON RD | West End | 6/11/2014 | 236 | 4/29/2019 | 133 |
| 320 | RIFLE-RULISON RD | East End | NA | No Data Collected | 4/11/2019 | 991 |
| 321 | TAUGHENBAUGH MESA RD | Beginning of Road East End | 7/16/2014 | 80 | 4/11/2019 | 99 |
| 322 | SHAEFFER RD | West End | 9/16/2014 | 163 | 4/3/2019 | 95 |
| 323 | RULISON RD | Beginning of Road | 7/16/2014 | 1,017 | 4/18/2019 | 705 |
| 324 | MAXFIELD RD | Beginning of Road West End | 6/11/2014 | 388 | 4/10/2019 | 220 |
| 325 | PORCUPINE CREEK | Beginning of Road | 7/16/2014 | 64 | 4/18/2019 | 116 |
| 326 | CHIPPERFIELD LN | Beginning of Road | 9/25/2014 | 107 | 4/2/2019 | 207 |
| 326E | E CHIPPERFIELD LN | No Data Collected | NA | No Data Collected | NA | No Data Collected |

| | | | | | | |
|------|------------------------|-----------------------------|-----------|-------------------|-----------|-------------------|
| 327 | HALLS GULCH | Beginning of Road North End | 6/11/2014 | 230 | 4/10/2019 | 122 |
| 328 | BALDY CREEK RD | No Data Collected | NA | No Data Collected | NA | No Data Collected |
| 329 | SPRUCE CREEK RD | Beginning of Road | 7/16/2014 | 107 | 4/18/2019 | 129 |
| 33 | 33 | No Data Collected | NA | No Data Collected | NA | No Data Collected |
| 331 | DRY HOLLOW RD | Above CR 346 | 9/2/2014 | 1,182 | 3/25/2019 | 1,252 |
| 332 | RAMSEY GULCH RD | West End | 9/16/2014 | 654 | 4/11/2019 | 274 |
| 333 | HUNTER MESA RD | East End | 6/19/2014 | 123 | 3/26/2019 | 70 |
| 333A | HUNTER MESA SHOP RD | Bottom of Road | NA | No Data Collected | 3/25/2019 | 416 |
| 334 | 334 | No Data Collected | NA | No Data Collected | NA | No Data Collected |
| 334A | SAMON LN | No Data Collected | NA | No Data Collected | NA | No Data Collected |
| 335 | COLORADO RIVER RD | West end by CR 311 | 9/2/2013 | 823 | 3/25/2019 | 496 |
| 335 | COLORADO RIVER RD | East End Before Mtn Shadows | NA | No Data Collected | 4/2/2019 | 2,799 |
| 336 | JENKINS CUTOFF | West end by CR 315 | 6/19/2014 | 502 | 4/1/2019 | 307 |
| 337 | 337 | Beginning of Road | 9/16/2014 | 110 | 4/3/2019 | 155 |
| 338 | BATTLEMENT CREEK RD | Beginning of Road | 7/16/2014 | 139 | 4/30/2019 | 252 |
| 339 | 339 | No Data Collected | NA | No Data Collected | NA | No Data Collected |
| 34 | PTARMIGAN DR | No Data Collected | NA | No Data Collected | NA | No Data Collected |
| 340 | 340 | Beginning of Road | 9/16/2014 | 37 | 4/22/2019 | 78 |
| 342 | FAIRVIEW RD | Beginning of Road North End | 6/11/2014 | 91 | 4/10/2019 | 90 |
| 343 | RAVEN RD | Beginning of Road West End | 6/11/2014 | 78 | 4/10/2019 | 37 |
| 344 | WEST DIVIDE RD | Beginning of Road West End | 6/11/2014 | 126 | 4/10/2019 | 42 |
| 345 | UNCLE BOB MOUNTAIN RD | No Data Collected | NA | No Data Collected | NA | No Data Collected |
| 346 | RIFLE-SILT RD | East End | 6/19/2014 | 755 | 4/3/2019 | 915 |
| 346 | LOWER AIRPORT RD | West End | 6/19/2014 | 1,118 | 3/26/2019 | 1,159 |
| 350 | 350 | No Data Collected | NA | No Data Collected | NA | No Data Collected |
| 352 | GARFIELD CO AIRPORT RD | West End | 6/19/2014 | 977 | 3/26/2019 | 1,541 |
| 352 | GARFIELD CO AIRPORT RD | East End | NA | No Data Collected | 4/3/2019 | 1,468 |
| 352A | RUNWAY ROAD | Beginning of Road | NA | No Data Collected | 4/3/2019 | 247 |

| | | | | | | |
|-------|------------------------|----------------------------|-----------|-------------------|-----------|-------------------|
| 353 | PETE AND BILL DRAW | No Data Collected | NA | No Data Collected | NA | No Data Collected |
| 354 | 354 | No Data Collected | NA | No Data Collected | NA | No Data Collected |
| 355 | 355 | Beginning of Road | 9/4/2014 | 83 | 4/22/2019 | 86 |
| 357A | VILLAGE DR | Beginning of Road | 9/4/2014 | 865 | 4/11/2019 | 632 |
| 366 | RIVERBEND DR | On CR 335 Before Riverbend | 9/4/2014 | 440 | 4/2/2019 | 535 |
| 367 | PINON RUN | No Data Collected | NA | No Data Collected | NA | No Data Collected |
| 368 | GLEN EAGLE CIR | No Data Collected | NA | No Data Collected | NA | No Data Collected |
| 370 | BATTLEMENT CREEK TRAIL | Lower Entrance | 9/4/2014 | 488 | 5/15/2019 | 805 |
| 371 | WILLOW CREEK TR | Lower Entrance | 9/4/2014 | 542 | 5/15/2019 | 523 |
| 372 | MONUMENT TR | Beginning of Road | 9/4/2014 | 1,660 | 4/8/2019 | 2,057 |
| 372EE | NORTHSTAR TR | Beginning of Road | 9/4/2014 | 924 | 5/15/2019 | 1,282 |
| 372I | PONDEROSA CI | Beginning of Road | 9/4/2014 | 377 | NA | No Data Collected |
| 372V | LODGEPOLE CI | Beginning of Road | 7/24/2014 | 91 | NA | No Data Collected |
| 373 | TAMARISK TR | Beginning of Road | 7/24/2014 | 828 | 5/8/2019 | 1,860 |
| 373A | RAINBOW TR | Beginning of Road | 7/24/2014 | 660 | 5/8/2019 | 1,420 |
| 373B | BLACKHAWK TR | Beginning of Road | 7/24/2014 | 346 | 5/8/2019 | 1,429 |
| 373BB | SILVERPLUVE DRIVE | Beginning of Road | NA | No Data Collected | 5/7/2019 | 215 |
| 373Z | MORNING STAR DR | Upper Entrance | 9/4/2014 | 204 | 5/8/2019 | 337 |
| 374 | THUNDERBERG TR | Beginning of Road | 9/4/2014 | 454 | 4/30/2019 | 815 |
| 374C | MINERAL SPRINGS CIRCLE | Beginning of Road | NA | No Data Collected | 5/8/2019 | 1,148 |
| 401 | 401 | No Data Collected | NA | No Data Collected | NA | No Data Collected |
| 402 | 402 | No Data Collected | NA | No Data Collected | NA | No Data Collected |
| 403 | 403 | No Data Collected | NA | No Data Collected | NA | No Data Collected |
| 404 | 404 | No Data Collected | NA | No Data Collected | NA | No Data Collected |
| 405 | 405 | No Data Collected | NA | No Data Collected | NA | No Data Collected |
| 406 | 406 | No Data Collected | NA | No Data Collected | NA | No Data Collected |
| 407 | 407 | No Data Collected | NA | No Data Collected | NA | No Data Collected |
| 408 | 408 | No Data Collected | NA | No Data Collected | NA | No Data Collected |

| | | | | | | |
|-----|---------------|------------------------|-----------|-------------------|-----------|-------------------|
| 409 | 409 | No Data Collected | NA | No Data Collected | NA | No Data Collected |
| 42 | KEATOR RD | No Data Collected | NA | No Data Collected | NA | No Data Collected |
| 442 | 442 | No Data Collected | NA | No Data Collected | NA | No Data Collected |
| 450 | WILSON LN | No Data Collected | NA | No Data Collected | NA | No Data Collected |
| 451 | PANORAMIC DR | Beginning of Road | 6/19/2014 | 178 | 7/29/2019 | 244 |
| 455 | Rainbow Drive | Beginning of Road | NA | No Data Collected | 7/29/2019 | 290 |
| 456 | ODIN DRIVE | Bridge | 9/2/2013 | 31 | NA | No Data Collected |
| 456 | ODIN DRIVE | End of Road Upper Part | NA | No Data Collected | 8/15/2019 | 163 |
| 457 | APACHE DR | No Data Collected | NA | No Data Collected | NA | No Data Collected |
| 458 | COMANCHERO TR | No Data Collected | NA | No Data Collected | NA | No Data Collected |
| 459 | NAVAJO ST | No Data Collected | NA | No Data Collected | NA | No Data Collected |
| 460 | UTE AVE | No Data Collected | NA | No Data Collected | NA | No Data Collected |
| 466 | APPLE DR | Beginning of Road | 9/24/2014 | 734 | 4/2/2019 | 907 |
| 468 | 468 | No Data Collected | NA | No Data Collected | NA | No Data Collected |
| 47 | 47 | No Data Collected | NA | No Data Collected | NA | No Data Collected |
| 470 | Rose Lane | Beginning of Road | NA | No Data Collected | 6/24/2019 | 298 |
| 471 | DAISY DR | No Data Collected | NA | No Data Collected | NA | No Data Collected |
| 472 | Willow Lane | Beginning of Road | NA | No Data Collected | 6/24/2019 | 335 |
| 473 | COTTONWOOD DR | No Data Collected | NA | No Data Collected | NA | No Data Collected |
| 481 | MICHAELS CIR | No Data Collected | NA | No Data Collected | NA | No Data Collected |
| 482 | HIDE AWAY LN | No Data Collected | NA | No Data Collected | NA | No Data Collected |
| 483 | WILD WOOD LN | No Data Collected | NA | No Data Collected | NA | No Data Collected |
| 484 | 484 | No Data Collected | NA | No Data Collected | NA | No Data Collected |
| 490 | 490 | No Data Collected | NA | No Data Collected | NA | No Data Collected |
| 491 | 491 | No Data Collected | NA | No Data Collected | NA | No Data Collected |
| 492 | 492 | No Data Collected | NA | No Data Collected | NA | No Data Collected |
| 500 | Sunrise Blvd | Beginning of Road | NA | No Data Collected | 7/29/2019 | 188 |
| 502 | PEACH LN | No Data Collected | NA | No Data Collected | NA | No Data Collected |

| | | | | | | |
|----|--------------------|-------------------|-----------|-------------------|-----------|-------------------|
| 51 | SOPRIS AVE | No Data Collected | NA | No Data Collected | NA | No Data Collected |
| 52 | 52 | No Data Collected | NA | No Data Collected | NA | No Data Collected |
| 54 | MESA ST | No Data Collected | NA | No Data Collected | NA | No Data Collected |
| 55 | GLENWOOD AVE | No Data Collected | NA | No Data Collected | NA | No Data Collected |
| 56 | CEDAR ST | No Data Collected | NA | No Data Collected | NA | No Data Collected |
| 57 | SOPRIS AVE | No Data Collected | NA | No Data Collected | NA | No Data Collected |
| 58 | 58 | No Data Collected | NA | No Data Collected | NA | No Data Collected |
| 59 | PINE STREET | No Data Collected | NA | No Data Collected | NA | No Data Collected |
| 62 | FISHER CEMETERY RD | No Data Collected | NA | No Data Collected | NA | No Data Collected |
| 64 | FISHER CREEK RD | No Data Collected | NA | No Data Collected | NA | No Data Collected |
| 69 | WESTBANK RD | Beginning of Road | 8/20/2014 | 702 | 6/14/2019 | 890 |
| 70 | OAK LN | No Data Collected | NA | No Data Collected | NA | No Data Collected |
| 71 | FAIRWAY LN | No Data Collected | NA | No Data Collected | NA | No Data Collected |
| 72 | MEADOW LN | No Data Collected | NA | No Data Collected | NA | No Data Collected |
| 73 | SUNLIGHT VIEW | Beginning of Road | NA | No Data Collected | 5/28/2019 | 429 |
| 74 | ALPINE CT | No Data Collected | NA | No Data Collected | NA | No Data Collected |
| 75 | DEER PARK CRT | No Data Collected | NA | No Data Collected | NA | No Data Collected |
| 76 | MEADOW WOOD ROAD | Beginning of Road | NA | No Data Collected | 5/28/2019 | 249 |
| 78 | BUCK POINT RD | No Data Collected | NA | No Data Collected | NA | No Data Collected |
| 79 | BASALT MOUNTAIN DR | No Data Collected | NA | No Data Collected | NA | No Data Collected |
| 80 | ELK RANGE RD | No Data Collected | NA | No Data Collected | NA | No Data Collected |
| 81 | SUNLIGHT DR | No Data Collected | NA | No Data Collected | NA | No Data Collected |
| 82 | 82 | No Data Collected | NA | No Data Collected | NA | No Data Collected |
| 83 | 83 | No Data Collected | NA | No Data Collected | NA | No Data Collected |
| 88 | SUNLIGHT PEAK RD | No Data Collected | NA | No Data Collected | NA | No Data Collected |
| 99 | SNOWMASS DR | No Data Collected | NA | No Data Collected | NA | No Data Collected |
| | | | | | | |
| | | | | | | |

SERVICE AREA AND BENEFIT DISTRICTS

