

# **Annex Cuttings Facility**

---

## **Dust Mitigation Plan**

### **Rule 427. Dust**



**Laramie Energy, LLC**  
**760 Horizon Drive, Suite 101**  
**Grand Junction, CO 81506**

**Annex Cuttings Facility  
Dust Mitigation Plan  
COGCC Rule 427. Dust**



**Introduction - Rule 427. Dust and Rule 304.c.(5) Dust Mitigation Plan**

The following plan addresses the requirements for Rule 427 Dust under 400 Series of the Colorado Oil and Gas Conservation Commission's (COGCC) Rules as required by Rule 304.c.(5).

**Annex Cuttings Facility**

Laramie Energy, LLC (Laramie) (Operator # 10433) is pursuing a Form 2A for a new Oil and Gas Location in Garfield County, Colorado for the development of a non-commercialized drill cuttings treatment and disposal site, the Annex Cuttings Facility (ACF) (**Appendix A – Vicinity Map**). The proposed site will be located on private property, owned by Laramie. The facility's main function will be to accommodate drill cuttings material from three well pad locations. The site's location is centralized to Laramie's Cascade Creek operations area.

The proposed Annex Cuttings Facility will be a non-commercialized E&P Waste Management Facility for the treatment and disposal of drill cuttings from three proposed well pad locations within Laramie's Cascade Creek field. The ACF and the three well sites are proposed in the *Laramie Energy 2021 Cascade Creek Oil and Gas Development Plan*. The facility will only manage the treatment and disposal of cuttings generated by Laramie's drilling activities and will not provide services to third parties. The site will be permitted and operated in accordance with applicable local, state, and Federal regulations.

Laramie Energy estimates that 19,800 cubic yards of untreated water-based bentonite drilling cuttings (to be managed as Oily Waste per COGCC Rule 905.g.(1)C.) will need to be transported to ACF. The proposed site design is to provide storage, treatment, and disposal for water-based bentonite drilling cuttings (to be managed as Oily Waste per COGCC Rule 905.g.(1)C.) for 40 wells from the 3 well sites and will allow for 22,000 cubic yards of material to be managed and treated.

**Location**

The site is located on Parcel #216921400026 within Garfield County, Colorado. The parcel is located 12.2 miles north of De Beque, Colorado. The site is located approximately 14 miles northeast of De Beque, Colorado and 21.8 miles northeast by access route. The site is located approximately 9.7 miles from the nearest public road, County Road 213.

**Legal Description:** SESE of Section 15, Township 6 South, Range 97 West, 6<sup>th</sup> P.M.

**Location Coordinates:** Latitude: 39.519233°; Longitude: -108.200979°.

**Elevation:** 8625 feet mean above sea level.

**Annex Cuttings Facility Dust Mitigation Plan**

The Annex Cuttings Facility (ACF) Dust Mitigation Plan (DMP) details the treatment of unpaved roads and disturbed surfaces to reduce dust produced by vehicle traffic, and construction activities, or wind. The application of the DMP will reduce airborne particulate matter during operations and vehicular transportation to ensure compliance with COGCC and local jurisdictional requirements.

**Annex Cuttings Facility  
Dust Mitigation Plan  
COGCC Rule 427. Dust**



Laramie implements fugitive dust controls throughout the Cascade Field. Employees are trained to identify conditions and operate to minimize fugitive dust emissions. The subject site will comply with standards as stated in 427 Dust section of the 400 series.

In order to minimize and mitigate fugitive dust, Laramie has incorporated several practices. Appropriate speed limits have been designated for vehicles on unpaved roadways. Restriction of land disturbance construction activity during high-wind days are also enforced. Field employees will notify operations if dust is observed. Water trucks are utilized to wet roadways, as needed, when natural moisture is insufficient to prevent airborne dust. Water trucks apply magnesium chloride or fresh water to roadways depending on location. Laramie's access roads within the transportation route are treated with fresh water to reduce dust emissions.

**Rule 427.a.(1) Soil Type**

A soils report from the Natural Resource Conservation Service (NRCS) indicates that within the proposed site perimeter and part of the surrounding area is the Parachute-Irigul-Rhone association (Map Unit 56) soils. The area bordering the northeast site perimeter is the Northwater-Adel complex (Map Unit 52) soils. The NRCS Soils Map is provided in **Appendix B**.

**Parachute-Irigul-Rhone association (Map Unit 56)**

The Parachute-Irigul-Rhone association soil unit is composed of Parachute and similar soils (35%), Irigul and similar soils (30%), Rhone and similar soil (30%) and minor components (5%). Parachute, Irigul, and Rhone all originated from accumulated weathered sandstone and shale Each have a water transmission rate that is low to moderately high at 0.01 to 0.57 inches per hour.

Parachute is a well drained soil with low available water storage of about 3.9 inches. Parachute is classified as hydrologic soil group C which defines the soil as having a slow infiltration rate when thoroughly wet.

Typical profile:      A - 0 to 10 inches: loam  
                              Bw - 10 to 25 inches: very channery loam  
                              R - 25 to 60 inches: bedrock

The NRCS states Irigul is a well drained soil with very low available water storage of about 1.5 inches. Irigul is classified as hydrologic soil group D which defines soils as having a very low infiltration rate when wet. This means the soils in group D have a higher potential for run off.

Typical Profile:      A1 - 0 to 6 inches: channery loam  
                              A2 - 6 to 13 inches: very channery loam  
                              R - 13 to 60 inches: bedrock

**Annex Cuttings Facility  
Dust Mitigation Plan  
COGCC Rule 427. Dust**



Rhone is a well drained soil with moderate available water storage of about 8.3 inches. The NRCS classifies Rhone as hydrologic soil group B which is defined as having moderate infiltration rate when thoroughly wet.

Typical Profile:     A1 - 0 to 10 inches: loam  
                          A2 - 10 to 39 inches: channery loam  
                          C - 39 to 55 inches: very channery loam  
                          R - 55 to 60 inches: bedrock

**Northwater-Adel complex (Map Unit 52)**

The Northwater-Adel complex is well drained and composed of Northwater and similar soils (50%), Adel and similar soils (40%), and minor components (10%).

The Northwater is derived from accumulated weathered sedimentary rock. It has a moderate available water storage of about 7.9 inches and has a water transmission rate that is low to moderately high at 0.01 to 0.57 inches per hour. The NRCS classifies Northwater as hydrologic soil group B which is defined as having moderate infiltration rate when thoroughly wet.

Typical Profile:     A - 0 to 28 inches: loam  
                          Bt - 28 to 48 inches: very channery loam  
                          R - 48 to 60 inches: bedrock

NRCS states Adel is composed of alluvium and/or colluvium derived from sedimentary rock. Adel has a high available water storage of about 10.1 inches and a moderately high water transmission rate of 0.21 to 0.71 inches per hour. Adel is classified as hydrologic soil group C which defines the soil as having a slow infiltration rate when thoroughly wet.

Typical Profile:     A1 - 0 to 20 inches: clay loam  
                          A2 - 20 to 31 inches: loam  
                          C - 31 to 60 inches: loam

**Table 1. Soils occurring in the project area.**

<b>Map Unit Symbol</b>	<b>Location</b>	<b>Soil Name</b>	<b>Description</b>	<b>Estimated Acreage Disturbance</b>
52	Access Road	Northwater-Adel complex	Occurs on mountain slopes and is derived from colluvium over residuum weathered from sandstone and shale.	0.06
56	Site and Access Road	Parachute-Irgual-Rhone Association, 25-50% slopes	Not prime farmland. Is well drained with high runoff rating. This soil occurs on mountains.	2.89

**Annex Cuttings Facility  
Dust Mitigation Plan  
COGCC Rule 427. Dust**



**Table 2: NRCS Soils Map Units – ACF**

Map Unit	Map Unit Name	Composition	Typical Profile		
52	Northwater-Adel complex	Northwater	A - 0 to 28 inches: <b>loam</b>	Bt - 28 to 48 inches: <b>very channery loam</b>	R - 48 to 60 inches: <b>bedrock</b>
		Adel	A1 - 0 to 20 inches: <b>clay loam</b>	A2 - 20 to 31 inches: <b>loam</b>	C - 31 to 60 inches: <b>loam</b>
56	Parachute-Irigul-Rhone association	Parachute	A - 0 to 10 inches: <b>loam</b>	Bw - 10 to 25 inches: <b>very channery loam</b>	Cr - 25 to 59 inches: <b>bedrock</b>
		Irigul	A - 0 to 6 inches: <b>channery loam</b>	C - 6 to 13 inches: <b>very channery loam</b>	R - 13 to 59 inches: <b>bedrock</b>
		-Rhone	A1 - 0 to 10 inches: <b>loam</b>	A2 - 10 to 39 inches: <b>channery loam</b>	C - 39 to 55 inches: <b>very channery loam</b> R - 55 to 60 inches: <b>bedrock</b>

The dominant soil type is loam for the subject site and access road. Loams have a lower wind erodibility than soils classified in a sand group. Loam soils present at the site have a low to high water capacity. The range of water retention will result in effective use of water as a dust suppressant while allowing drainage.

**Rule 427.a.(2) Proposed vehicle speed limit to minimize dust**

Access roads within Laramie’s Cascade Creek field will not exceed speeds of 25 miles per hour (m.p.h.) on unpaved roads. During dry conditions or when dust is visible, vehicles will reduce speeds based on conditions. Field employees will notify operations if dust is observed.

**Rule 427.a.(3) Total area of soil disturbance (in acres)**

The new location will be constructed on previously disturb land. The location was formerly developed as an annex pad to the CC 0697-15-54 well site. No native land will be disturbed in the development of this location/facility. The Layout Drawings for the proposed disturbance (**Appendix C**) includes topsoil, cut, and fill estimates for pad construction and stormwater control features. The total acreage disturbance for the facility and access road will be 2.95 acres (128,267 square feet).

**Annex Cuttings Facility  
Dust Mitigation Plan  
COGCC Rule 427. Dust**



**Table 3. Disturbance Acreage for the Annex Cuttings Facility**

<b>Annex Cuttings Facility Location</b>	<b>Disturbance in Acres</b>
Proposed Construction on Previously Disturbed Land (including access road)	2.95
Proposed Construction on Native Land	0
Working Pad Surface (WPS)	0.60
Total Area of Disturbance (including access road)	2.95
Area to be Reclaimed (including access road)	2.95
Production Phase/ Long-Term Disturbance (after Interim Reclamation)	0

After treatment of drill cuttings, the site will be reclaimed. There will be no long-term disturbance associated with this location. Final reclamation and grading activities will take approximately 27 days to complete.

**Rule 427.a.(4) Surface of Access Road**

The access road will be constructed within previously disturbed surface. No additional soil disturbance will occur. Access road is include in the Area of Disturbance acreage. Gravel will be placed on the ACF access road. Initial gravel application shall be a minimum of 6 inches. Laramie will provide timely year-round road maintenance and cleanup on the access roads. A regular schedule for maintenance will include, but not be limited to, blading, ditch and culvert cleaning, road surface replacement, and dust abatement.

Unpaved roads and staging areas shall be watered three times daily when being used by construction vehicle traffic to maintain no visible vehicle travel dust emissions.

**Rule 427.a.(5) Number of anticipated truck trips during each stage of well pad construction, drilling, completion, and production**

The following **Table 4** summarizes the expected average VPD and maximum trips per activity for the operational life of the facility.

**Table 4: Trip Generation - Total Trips Accessing Annex Cutting Facility**

<b>Stage</b>	<b>Time Interval (Days)</b>	<b>Total Maximum Trips Generated Per Activity</b>	<b>Average VPD Per Activity</b>
Initial Grading Activities	10	31	3.1
Transportation	50	960	19.2
Treatment	540	90	0.17
Final Reclamation and Grading	27	65	2.4

**Rule 427.a.(6) A plan for suppressing fugitive dust caused solely by wind**

During construction and earthwork activities employees and contractors will report if wind speeds increase and dust is observed. Laramie will implement dust abate measures, as stated in the DMP, to reduce and prevent dust caused by wind.



To prevent dust from wind when the site is not actively being accessed, Laramie will employ watering. Inactive excavated or graded soils and soil piles shall be sufficiently watered or sprayed with a soil stabilizer to create a surface crust or shall be covered.

Employees and contractors will be notified if weather events that may promote dust are predicted or observed.

### **Rule 427.a.(7) Best Management Practices**

Laramie has adopted the following B.M.P. to mitigate dust during construction and transportation activities:

- Vehicles will not travel at speeds over 25 m.p.h. on unpaved roads.
- During dry conditions or when dust is visible, vehicular speeds will be reduced.
- Restriction of land disturbance construction activity during high-wind day.
- Field employees will notify operations if dust is observed.
- Water trucks will be utilized to wet roadways, as needed, when natural moisture is insufficient to prevent airborne dust.
- Water trucks apply magnesium chloride or fresh water to roadways depending on location.
- Drop heights from excavators and loaders shall be minimized to a distance no more than 5 feet.
- Construction activities that occur on unpaved surfaces shall be discontinued during periods when activities are causing visible dust plumes that cannot be avoided by approved dust suppression methods.
- Contractor shall conduct a visual inspection of the vehicle wheels and the wheels of the equipment loaded upon each vehicle to assess the presence of dirt.

Laramie uses fresh water sources within the Cascade Creek or Knowles Trucking for dust suppression. Knowles Trucking, utilized depending on conditions or time of year, obtains fresh water from the Colorado River prior to accessing the Cascade Creek operations area. Fresh water sources for dust abatement are detailed in the ACF Water Plan, provided with the Form 2A.

**Rule 427.b.** *Operators will minimize fugitive dust caused by their operations, or dust originating from areas disturbed by their Oil and Gas Operations that becomes windborne.*

Laramie will adhere to Rule 427.b. Laramie will implement fugitive dust controls throughout the Cascade Field as stated in the ACF Dust Mitigation Plan to minimize dust caused by operations.



### **Rule 427.c. Applying Dust Suppressant.**

Laramie will utilize fresh water and/or magnesium chloride as a dust suppressant depending on conditions and location. Any chemical-based dust suppressant shall be applied per manufacturer's recommendations and in sufficient quantities to maintain compliance. Fresh water utilized for dust abatement will adhere to the ACF Water Plan, provided in the Form 2A.

**Rule 427.c.1.** Laramie will not apply the following fluids for dust suppression as state in COGCC Rule 427.c.(1):

- Produced water
- E&P Waste or hazardous waste
- Crude oil or any oil not specifically designed for road maintenance
- Solvents
- Any process Fluids

**Rule 427.c.(2)** *Operators will use only fresh water (potable or non-potable) to conduct dust suppression activities within 300 feet of the ordinary high-water mark of any water body.*

Laramie will adhere to COGCC 427.c.(2) and will only utilize fresh water to conduct dust suppression activities within 300 feet of the ordinary high-water mark of any water body.

**Rule 427.c.(3)** *Operators will maintain safety data sheets ("SDS") for any chemical-based dust suppressant and make the SDS available immediately upon request to the Director and to the Local Government. Operators will maintain SDS for any chemical-based dust suppressant until the site passes final site Reclamation and transfer the records upon transfer of property ownership.*

Laramie will maintain SDS for any chemical-based dust suppressant utilized in within the ACF site perimeter. Records will be made available upon request. Any chemical-based dust suppressant shall be applied per manufacturer's recommendations and in sufficient quantities to maintain compliance.

**Rule 427.d.** *Within 2,000 feet of Building Units, or High Priority Habitat, the Commission may require additional dust control measures as a condition of approval.*

The DMP was designed to mitigate and minimize dust impacts to any wildlife and vegetation in the surrounding area. The ACF is not located within 2,000 of any building units. The proposed site is located within 2,000 of a High Priority Habitat.

Dust generated during project construction and project-related vehicle traffic on associated access roads has the potential to impact adjacent vegetation. Dust deposition may reduce plant numbers or plant vigor as a result of respiratory and reproductive suppression. However, due to the short-term construction phase and the implementation of dust

**Annex Cuttings Facility  
Dust Mitigation Plan  
COGCC Rule 427. Dust**

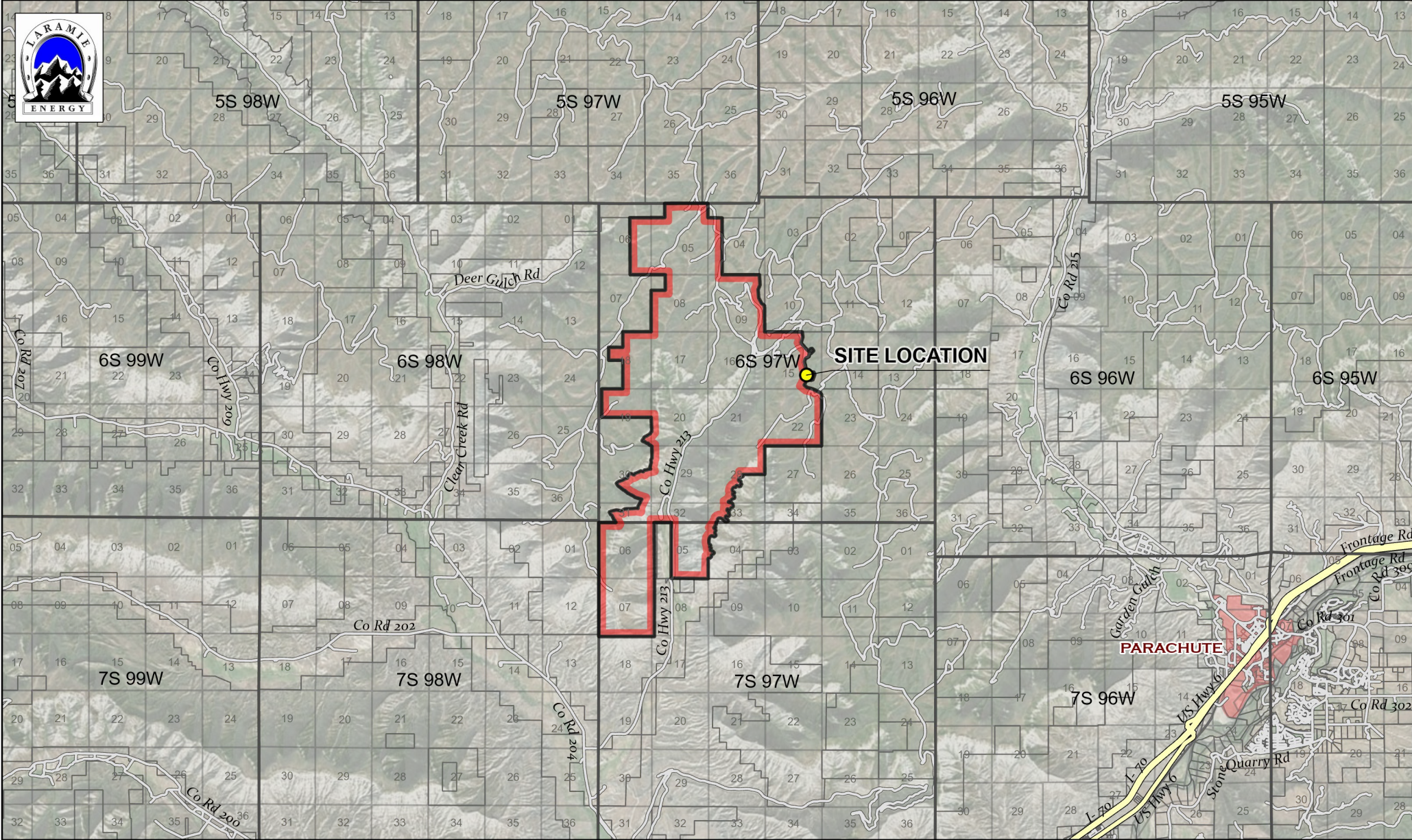


suppression measures during construction activities, dust impacts are not expected to create any long-term impacts on nearby vegetation.

**Rule 427.e. Cumulative Dust Impacts.** *Based on review of dust mitigation plans submitted pursuant to Rule 427.a, the Commission may require Operators to adopt additional dust mitigation requirements to reduce cumulative dust impacts, based on the following considerations:*

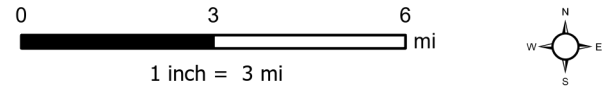
Laramie shall implement dust abatement measures as needed to prevent cumulative dust impacts from vehicular traffic, equipment operations, or wind events. BMPs such as creating efficient travel routes, reducing vehicular travel when possible, and observing wind and soil conditions will mitigate and minimize fugitive dust.

<b>List of Appendices</b>	
<b>Appendix A</b>	Vicinity Map
<b>Appendix B</b>	NRCS Soils Map
<b>Appendix C</b>	Layout Drawings



**Reclamation Status**

Garfield County Parcels Parcel



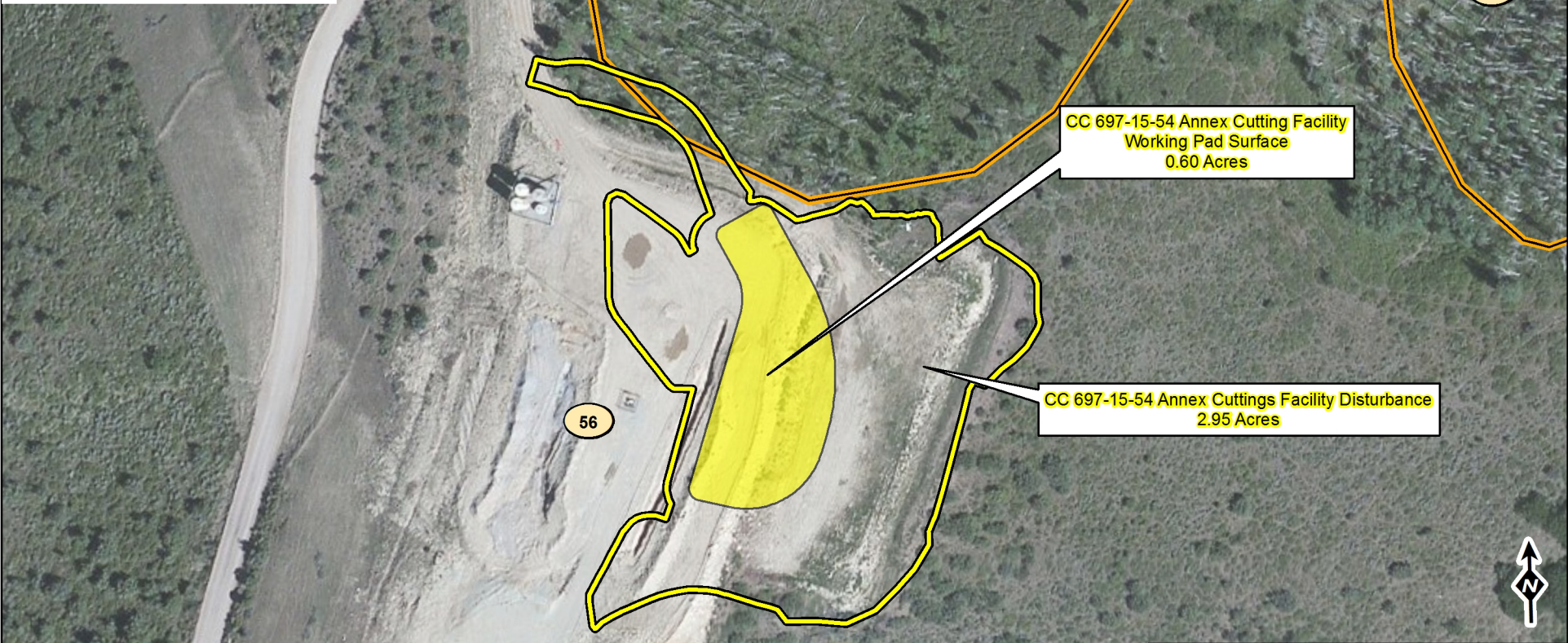
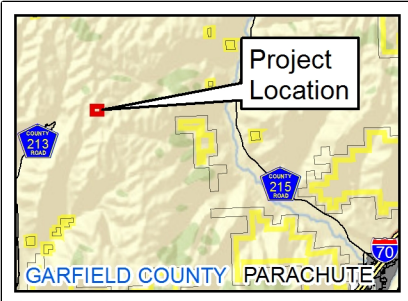
Project No: 020-014  
Map By: NDB  
Date: 9/28/2020

**LOCATION OVERVIEW MAP**  
CASCADE CREEK 697-15-54  
ANNEX CUTTING FACILITY  
LARAMIE ENERGY  
GARFIELD COUNTY, COLORADO



330 Grand Avenue, Unit C  
Grand Junction, CO 81501  
970-549-1015

Figure  
1



CC 697-15-54 Annex Cutting Facility  
Working Pad Surface  
0.60 Acres

CC 697-15-54 Annex Cuttings Facility Disturbance  
2.95 Acres

**Legend**

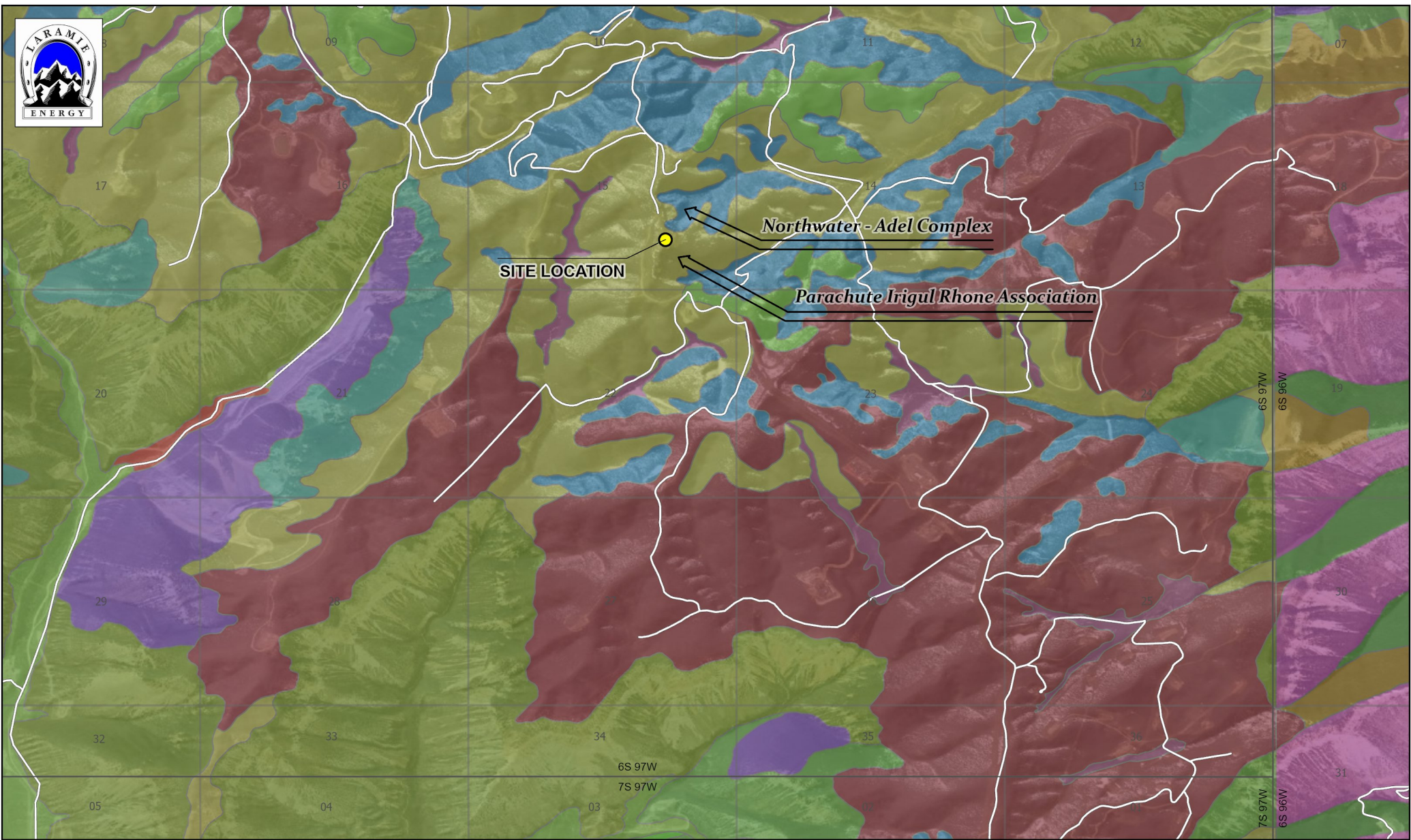
- Working Pad Surface
- Disturbance
- CO 682 Soils
- Interstate Highway
- Road
- Streams
- BLM

**Soils Map**  
**Laramie Energy**  
**CC 697-15-54 Annex Cuttings**  
**Soil Survey (NRCS)**  
**Soils**

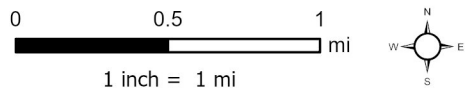
**WestWater Engineering**  
Consulting Engineers & Scientists

0 100 200 300  
Feet

**October 2021**



Debeque very channery loam, 5 to 20 percent slopes	Northwater-Adel complex, 5 to 50 percent slopes	Silas loam, 1 to 12 percent slopes
Grobutte very channery loam, 30 to 60 percent slopes	Parachute loam, 25 to 65 percent slopes	Torriorthents, cool-Rock outcrop complex, 35 to 90 percent slopes
Happle very channery sandy loam, 3 to 12 percent slopes	Parachute-Irigul complex, 5 to 30 percent slopes	Tosca channery loam, 25 to 80 percent slopes MLRA 48A
Happle-Rock outcrop association, 25 to 65 percent slopes	Parachute-Irigul-Rhone association, 25 to 50 percent slopes MLRA 48A	Utso-Rock outcrop complex, 40 to 90 percent slopes
Irigul channery loam, 50 to 75 percent slopes	Parachute-Rhone loams, 5 to 30 percent slopes	
Nihill channery loam, 6 to 25 percent slopes	Rock outcrop-Torriorthents complex, very steep	



Project No:	020-014
Map By:	NDB
Date:	9/1/2020

**NRCS SOILS**  
 CC 697-15-54 ANNEX  
 LARAMIE ENERGY  
 GARFIELD COUNTY, COLORADO  
 SWSE SEC 15 T6S R97W



330 Grand Avenue, Unit C  
 Grand Junction, CO 81501  
 970-549-1015

Figure
2

# **Annex Cuttings Facility**

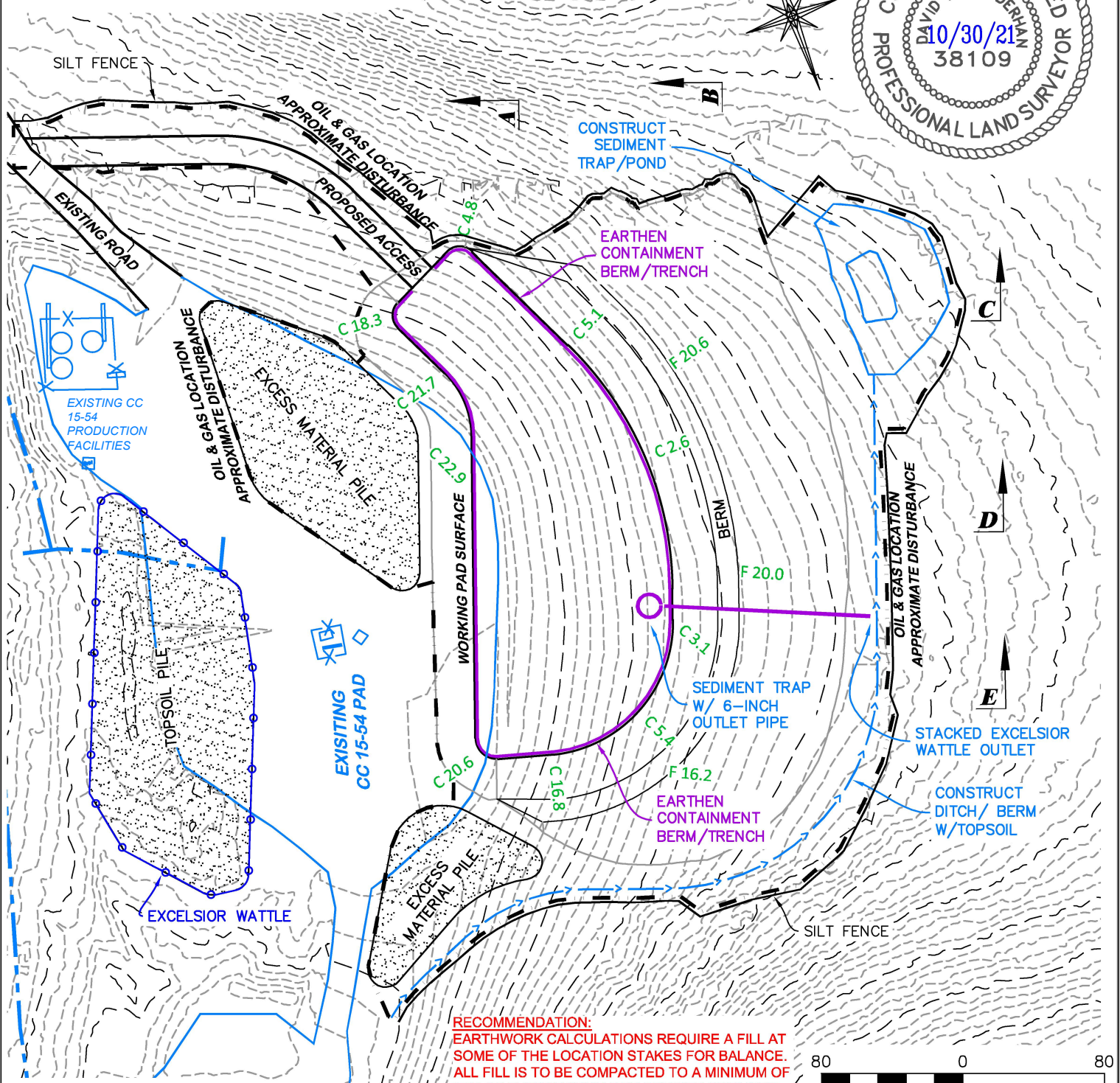
---

## **Rule 304.b.(7).B. Layout Drawings**

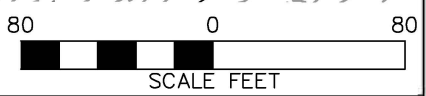


**Laramie Energy, LLC**  
**760 Horizon Drive, Suite 101**  
**Grand Junction, CO 81506**

UNGRADED ELEVATION: 8604.7'  
 FINAL ELEVATION: 8602.0'  
 AREA OF DISTURBANCE: 2.9± ACRES  
 AREA OF WORKING PAD SURFACE: 0.60± ACRES



**RECOMMENDATION:**  
 EARTHWORK CALCULATIONS REQUIRE A FILL AT SOME OF THE LOCATION STAKES FOR BALANCE. ALL FILL IS TO BE COMPACTED TO A MINIMUM OF 95% OF THE MAXIMUM DRY DENSITY OBTAINED BY AASHTO METHOD T-99.



**BEFORE DIGGING CALL FOR UTILITY LINE LOCATION**  
 NOTE: THE EARTH QUANTITIES ON THIS DRAWING ARE ESTIMATED AND THE USE OF SAID QUANTITIES IS AT THE RESPONSIBILITY OF THE USER.

**CC 697-15-54 ANNEX**

LAYOUT DRAWING 1 OF 4 - NO GRADING LINES

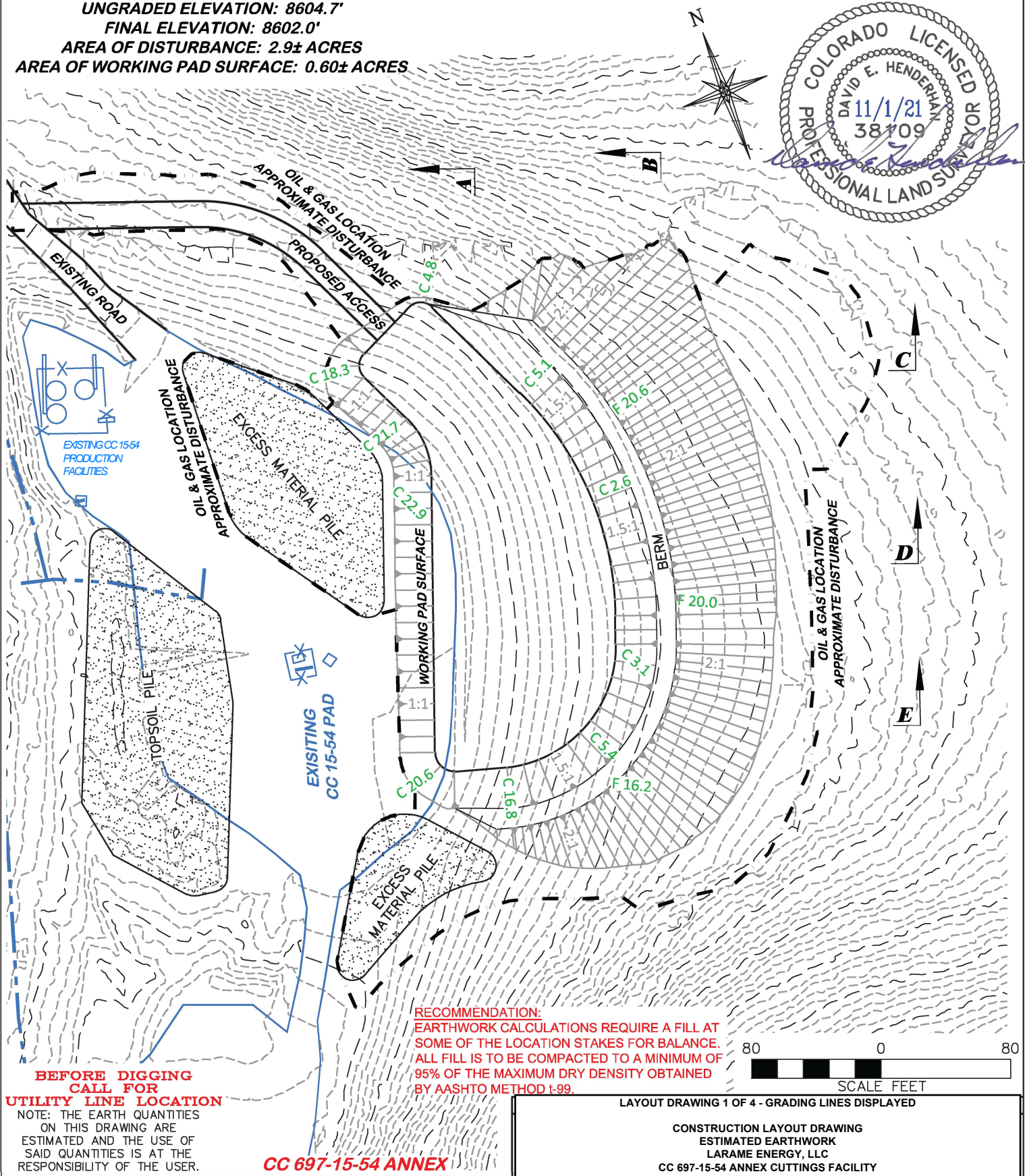
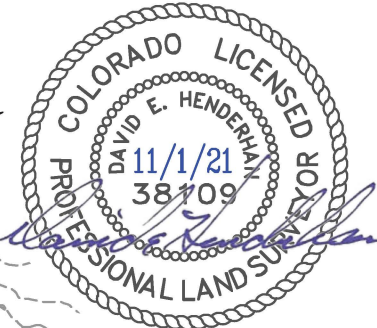
CONSTRUCTION LAYOUT DRAWING  
 ESTIMATED EARTHWORK  
 LARAME ENERGY, LLC  
 CC 697-15-54 ANNEX CUTTINGS FACILITY  
 SESE, SECTION 15, T.6S., R.97W., 6TH P.M.,  
 GARFIELD COUNTY, COLORADO

**ESTIMATED EARTHWORK**

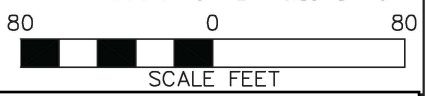
	ITEM	CUT	FILL	TOPSOIL	EXCESS
DRAWN: 10/29/2021 - DEH	PAD	21,426 CY	16,376 CY	5,050 CY	0 CY
REVISD: N/A	PIT	NONE			NONE
SCALE: 1" = 80'	TOTALS	21,426 CY	16,376 CY	5,050 CY	0 CY
DRG JOB No. 21379					
304B(7)BI CONST					

**DRG RIFFIN & ASSOCIATES, INC.**  
 (307) 362-5028 1414 ELK ST., ROCK SPRINGS, WY 82901

UNGRADED ELEVATION: 8604.7'  
 FINAL ELEVATION: 8602.0'  
 AREA OF DISTURBANCE: 2.9± ACRES  
 AREA OF WORKING PAD SURFACE: 0.60± ACRES



**RECOMMENDATION:**  
 EARTHWORK CALCULATIONS REQUIRE A FILL AT SOME OF THE LOCATION STAKES FOR BALANCE. ALL FILL IS TO BE COMPACTED TO A MINIMUM OF 95% OF THE MAXIMUM DRY DENSITY OBTAINED BY AASHTO METHOD T-99.



**BEFORE DIGGING CALL FOR UTILITY LINE LOCATION**  
 NOTE: THE EARTH QUANTITIES ON THIS DRAWING ARE ESTIMATED AND THE USE OF SAID QUANTITIES IS AT THE RESPONSIBILITY OF THE USER.

**CC 697-15-54 ANNEX**

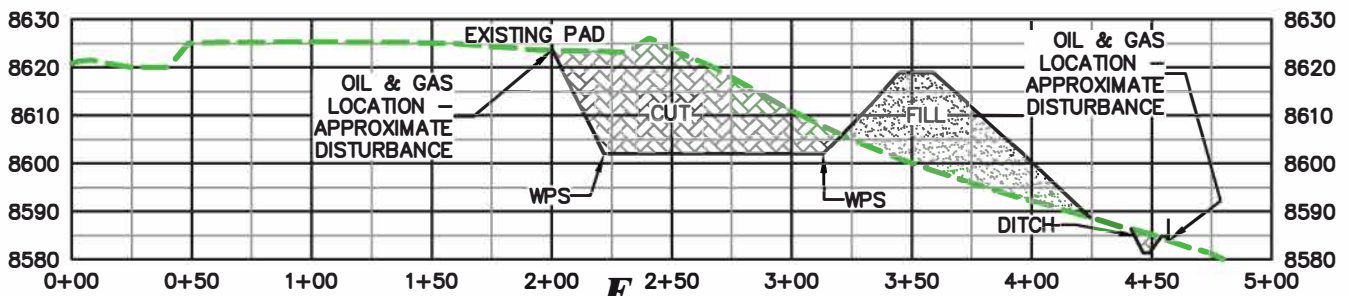
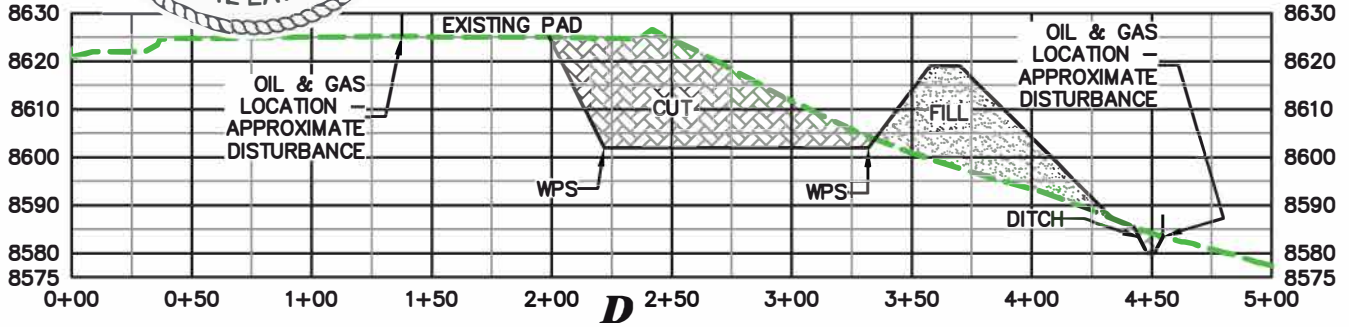
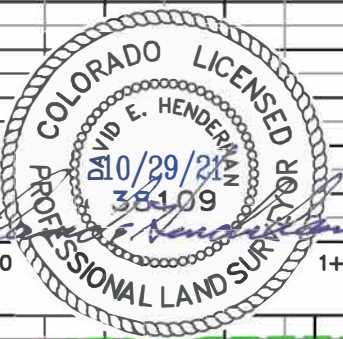
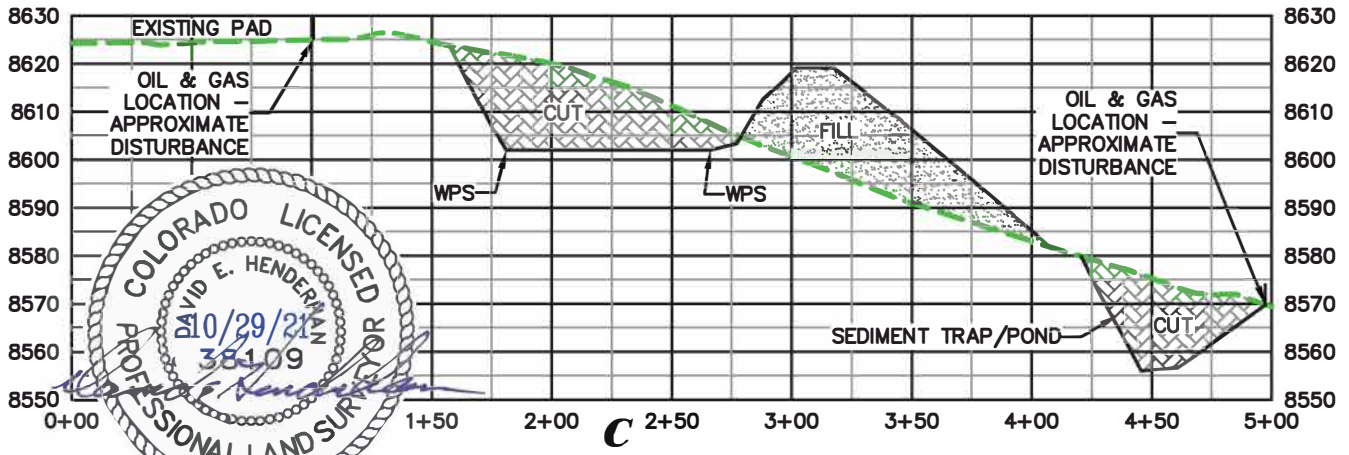
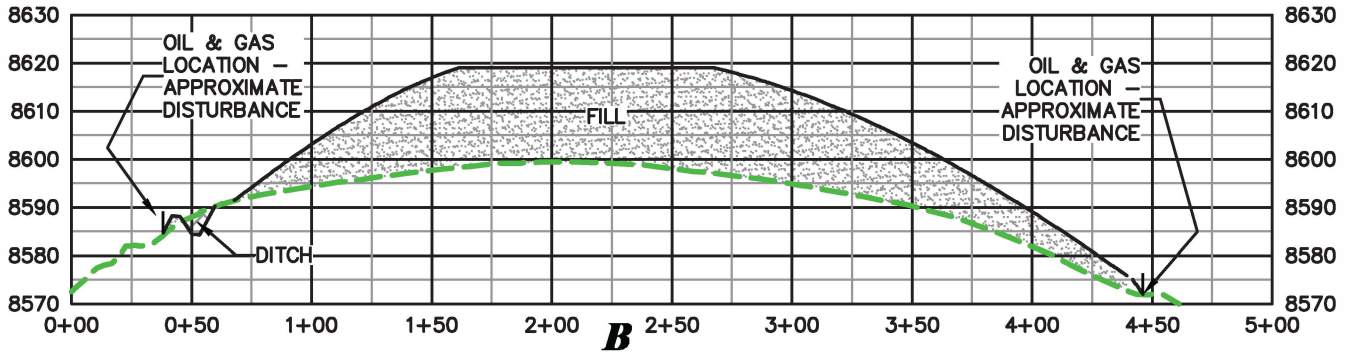
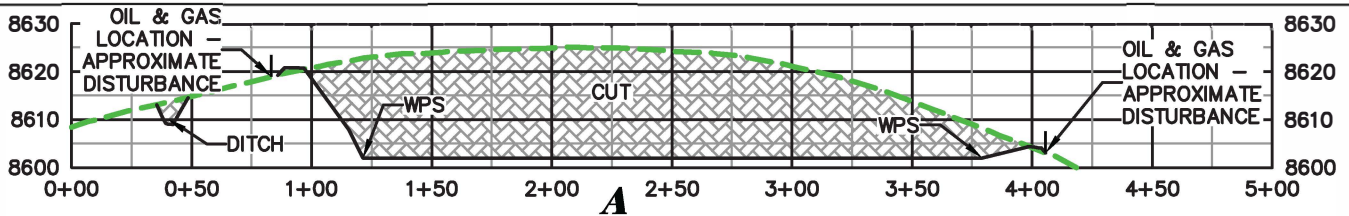
LAYOUT DRAWING 1 OF 4 - GRADING LINES DISPLAYED

CONSTRUCTION LAYOUT DRAWING  
 ESTIMATED EARTHWORK  
 LARAME ENERGY, LLC  
 CC 697-15-54 ANNEX CUTTINGS FACILITY  
 SESE, SECTION 15, T.6S., R.97W., 6TH P.M.,  
 GARFIELD COUNTY, COLORADO

**ESTIMATED EARTHWORK**

	ITEM	CUT	FILL	TOPSOIL	EXCESS
DRAWN: 10/29/2021 - DEH	PAD	21,426 CY	16,376 CY	5,050 CY	0 CY
REVISED: N/A	PIT	NONE			NONE
SCALE: 1" = 80'	TOTALS	21,426 CY	16,376 CY	5,050 CY	0 CY
DRG JOB No. 21379					
304B(7)BI CONST					

**DRG RIFFIN & ASSOCIATES, INC.**  
 (307) 362-5028 1414 ELK ST., ROCK SPRINGS, WY 82901



**RECOMMENDATION:**  
 EARTHWORK CALCULATIONS REQUIRE A FILL AT SOME OF THE LOCATION STAKES FOR BALANCE. ALL FILL IS TO BE COMPACTED TO A MINIMUM OF 95% OF THE MAXIMUM DRY DENSITY OBTAINED BY AASHTO METHOD T-99.

**C 697-15-54 ANNEX**

**CUT SLOPES 1:1  
 FILL SLOPES 2:1**

**DRG RIFFIN & ASSOCIATES, INC.**  
 (307) 362-5028 1414 ELK ST., ROCK SPRINGS, WY 82901

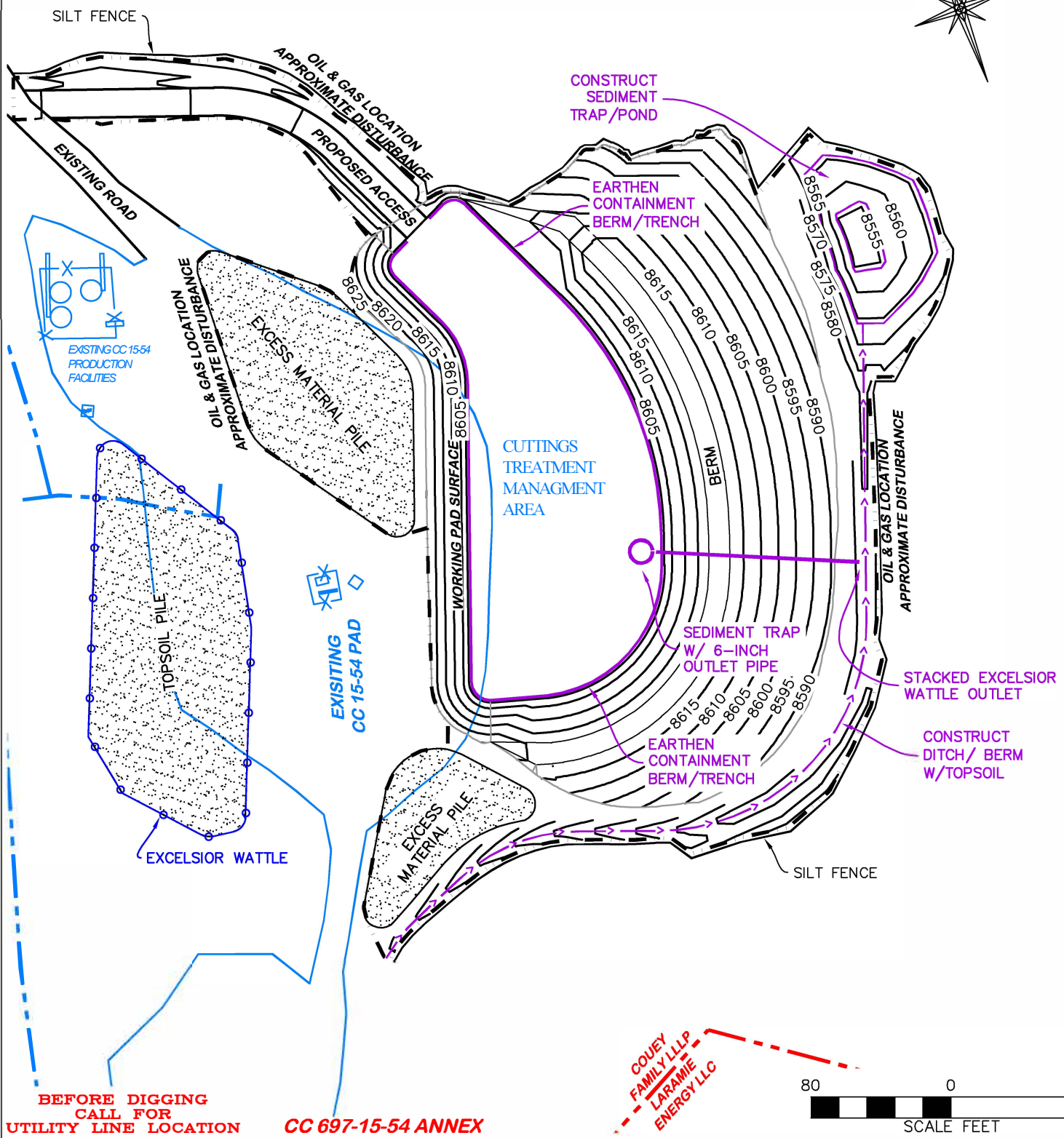
<b>DRAWN:</b> 10/29/2021 - DEH	<b>SCALE:</b> H - 1" = 80' V - 1" = 80'
<b>REVISED:</b> N/A	<b>DRG JOB No.</b> 21379
	<b>304b(7)Bi XSEC</b>

LAYOUT DRAWING 2 OF 4

CONSTRUCTION LAYOUT DRAWING  
 CROSS SECTIONS  
 LARAME ENERGY, LLC  
 CC 697-15-54 ANNEX CUTTINGS FACILITY  
 SESE, SECTION 15, T.6S., R.97W., 6TH P.M.,  
 GARFIELD COUNTY, COLORADO

UNGRADED ELEVATION: 8604.7'  
 FINAL ELEVATION: 8602.0'  
 AREA OF DISTURBANCE: 2.9± ACRES  
 AREA OF WORKING PAD SURFACE: 0.60± ACRES

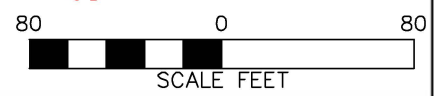
COUEY  
 FAMILY LLLP  
 LARAMIE  
 ENERGY LLC



BEFORE DIGGING  
 CALL FOR  
 UTILITY LINE LOCATION

CC 697-15-54 ANNEX

COUEY  
 FAMILY LLLP  
 LARAMIE  
 ENERGY LLC



**DRG** RIFFIN & ASSOCIATES, INC.  
 (307) 362-5028 1414 ELK ST., ROCK SPRINGS, WY 82901

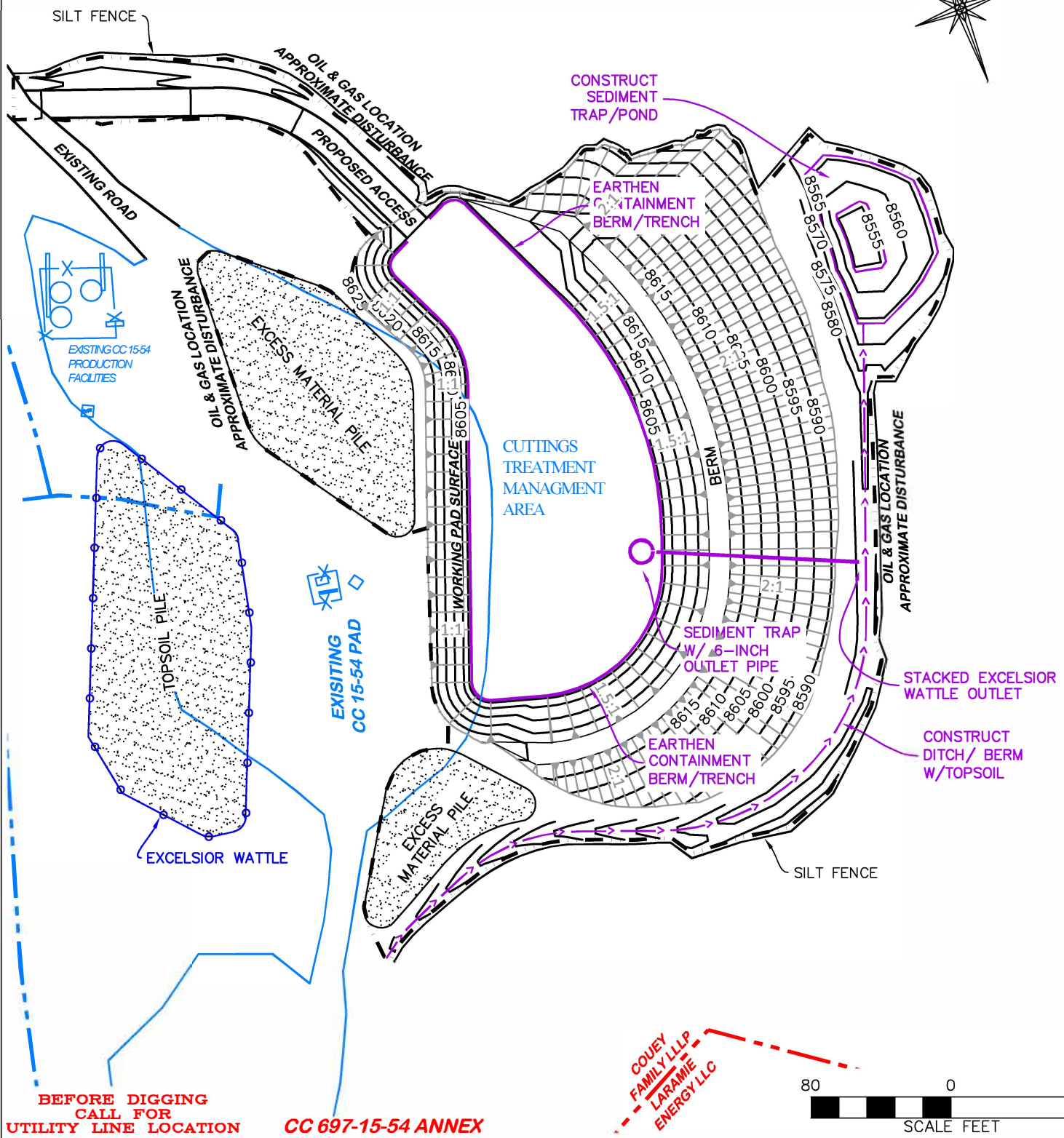
DRAWN: 10/29/2021 - DEH	SCALE: 1" = 80'
REVISED: N/A	DRG JOB No. 21379
	304b(l)B

LAYOUT DRAWING 3 OF 4 - NO GRADING LINES

FACILITY LAYOUT DRAWING  
 LARAMIE ENERGY, LLC  
 CC 697-15-54 ANNEX CUTTINGS FACILITY  
 SESE, SECTION 15, T.6S., R.97W., 6TH P.M.,  
 GARFIELD COUNTY, COLORADO

UNGRADED ELEVATION: 8604.7'  
 FINAL ELEVATION: 8602.0'  
 AREA OF DISTURBANCE: 2.9± ACRES  
 AREA OF WORKING PAD SURFACE: 0.60± ACRES

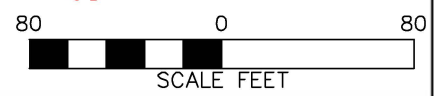
COUEY  
 FAMILY LLLP  
 LARAMIE  
 ENERGY LLC



BEFORE DIGGING  
 CALL FOR  
 UTILITY LINE LOCATION

CC 697-15-54 ANNEX

COUEY  
 FAMILY LLLP  
 LARAMIE  
 ENERGY LLC



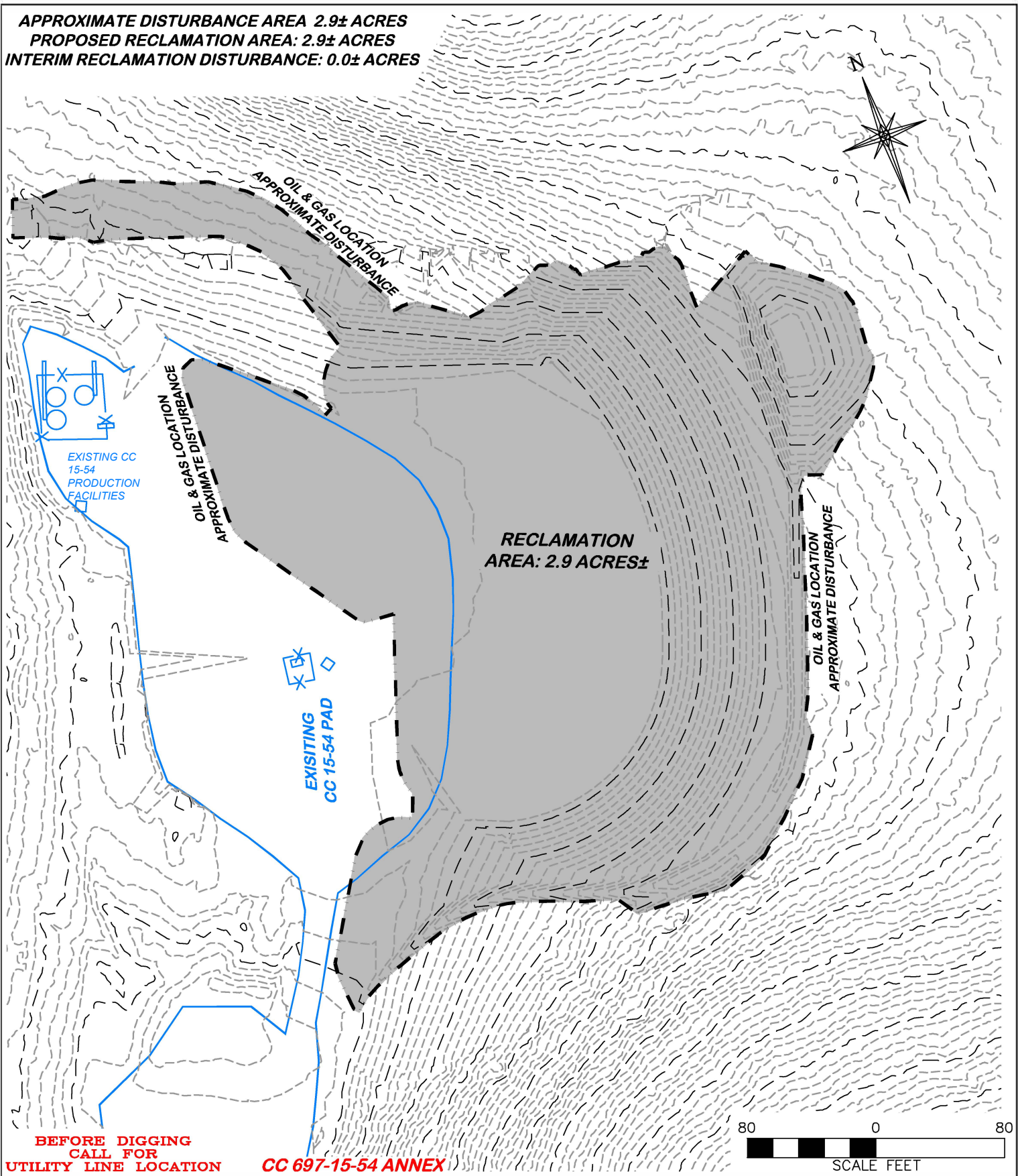
**DRG** RIFFIN & ASSOCIATES, INC.  
 (307) 362-5028 1414 ELK ST., ROCK SPRINGS, WY 82901

DRAWN: 10/29/2021 - DEH	SCALE: 1" = 80'
REVISED: N/A	DRG JOB No. 21379
	304c(15) BMP

LAYOUT DRAWING 3 OF 4 - GRADING LINES DISPLAYED

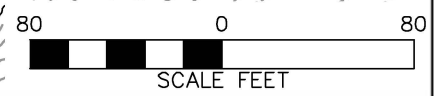
FACILITY LAYOUT DRAWING  
 LARAMIE ENERGY, LLC  
 CC 697-15-54 ANNEX CUTTINGS FACILITY  
 SESE, SECTION 15, T.6S., R.97W., 6TH P.M.,  
 GARFIELD COUNTY, COLORADO

APPROXIMATE DISTURBANCE AREA 2.9± ACRES  
 PROPOSED RECLAMATION AREA: 2.9± ACRES  
 INTERIM RECLAMATION DISTURBANCE: 0.0± ACRES



**BEFORE DIGGING  
 CALL FOR  
 UTILITY LINE LOCATION**

**CC 697-15-54 ANNEX**



**DRG** RIFFIN & ASSOCIATES, INC.  
 (307) 362-5028 1414 ELK ST., ROCK SPRINGS, WY 82901

DRAWN: 10/29/2021 - DEH	SCALE: 1" = 80'
REVISED: N/A	DRG JOB No. 21379
	304b.(7)B

LAYOUT DRAWING 4 OF 4

**PROPOSED FINAL RECLAMATION  
 LARAMIE ENERGY, LLC.  
 CC 697-15-54 ANNEX CUTTINGS FACILITY  
 SESE, SECTION 15, T. 6 S., R. 97 W., 6th P.M.,  
 GARFIELD COUNTY, COLORADO**