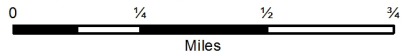


HPH Species Activity Within One Mile	Distance (Feet)
Aquatic Sportfish Management Water	4686
Greater Sage-Grouse General Habitat Management Area	83
Greater Sage-Grouse Priority Habitat Management Area	1558

Legend

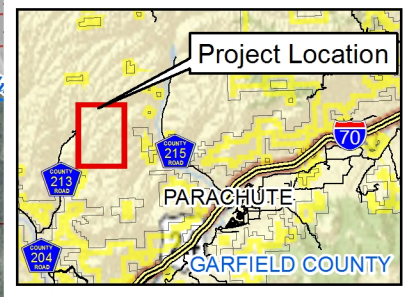
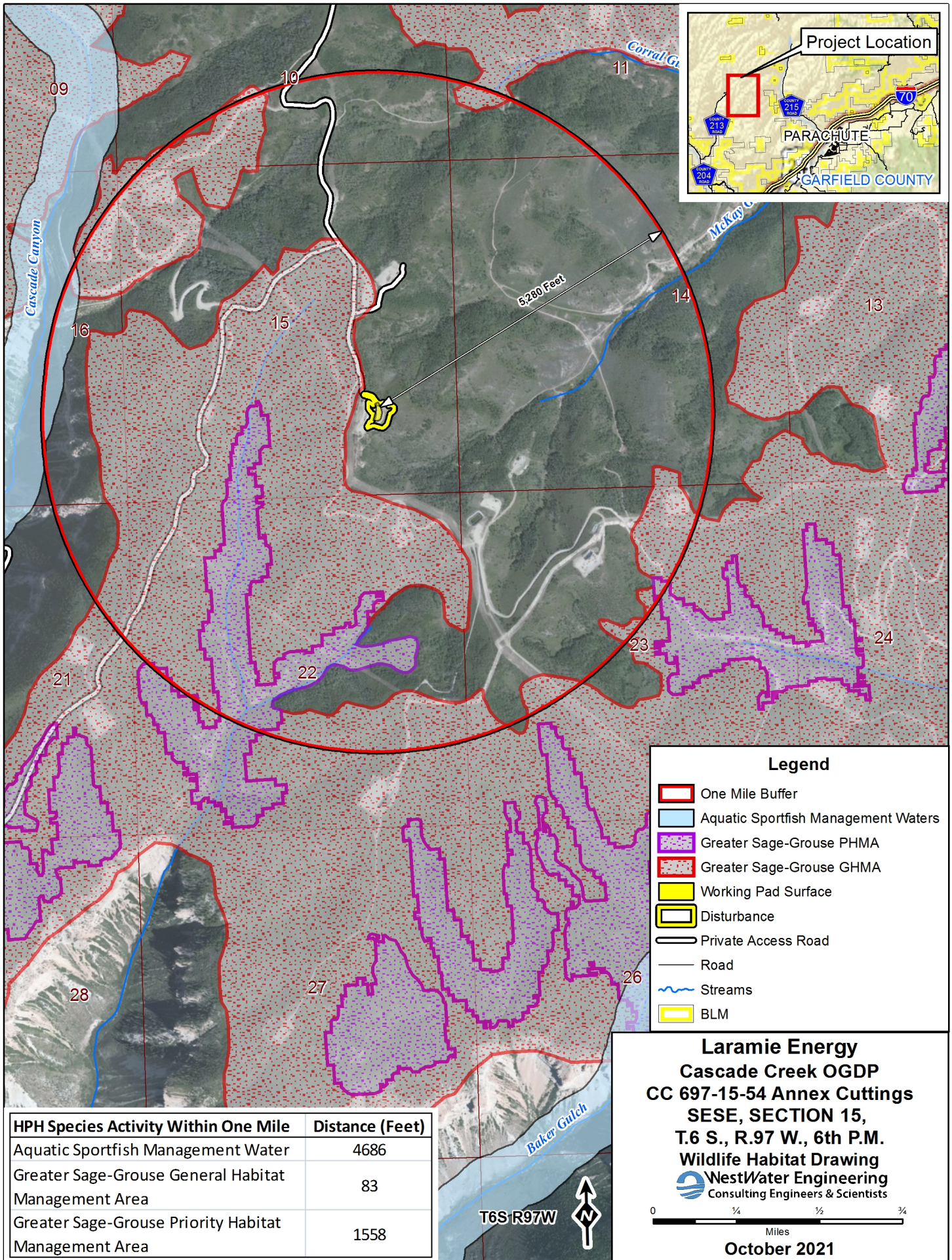
- One Mile Buffer
- Aquatic Sportfish Management Waters
- Greater Sage-Grouse PHMA
- Greater Sage-Grouse GHMA
- Working Pad Surface
- Disturbance
- Private Access Road
- Road
- Streams
- BLM

Laramie Energy
Cascade Creek OGD
CC 697-15-54 Annex Cuttings
SESE, SECTION 15,
T.6 S., R.97 W., 6th P.M.
Wildlife Habitat Drawing
NestWater Engineering
 Consulting Engineers & Scientists



October 2021

Map Source: Z:\Laramie Energy \Cascade Creek Oil and Gas Development Plan\2021\GIS\Wildlife Protection Plan Report Maps Revised 11-9-21\CC 697-15-54 Annex Cuttings Figure 2 topo.mxd 11/10/2021 rb

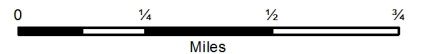


HPH Species Activity Within One Mile	Distance (Feet)
Aquatic Sportfish Management Water	4686
Greater Sage-Grouse General Habitat Management Area	83
Greater Sage-Grouse Priority Habitat Management Area	1558

Legend

- One Mile Buffer
- Aquatic Sportfish Management Waters
- Greater Sage-Grouse PHMA
- Greater Sage-Grouse GHMA
- Working Pad Surface
- Disturbance
- Private Access Road
- Road
- Streams
- BLM

Laramie Energy
Cascade Creek OGD
CC 697-15-54 Annex Cuttings
SESE, SECTION 15,
T.6 S., R.97 W., 6th P.M.
Wildlife Habitat Drawing
WestWater Engineering
 Consulting Engineers & Scientists



October 2021