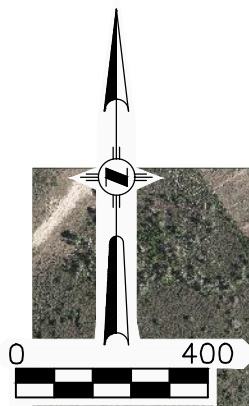


**AERIAL LOCATION PHOTO**



**LOCATION PHOTOS  
9/27/2021**



**W N E**

**LOCATION AREA LOOKING NORTH**



**E S W**

**LOCATION AREA LOOKING SOUTH**

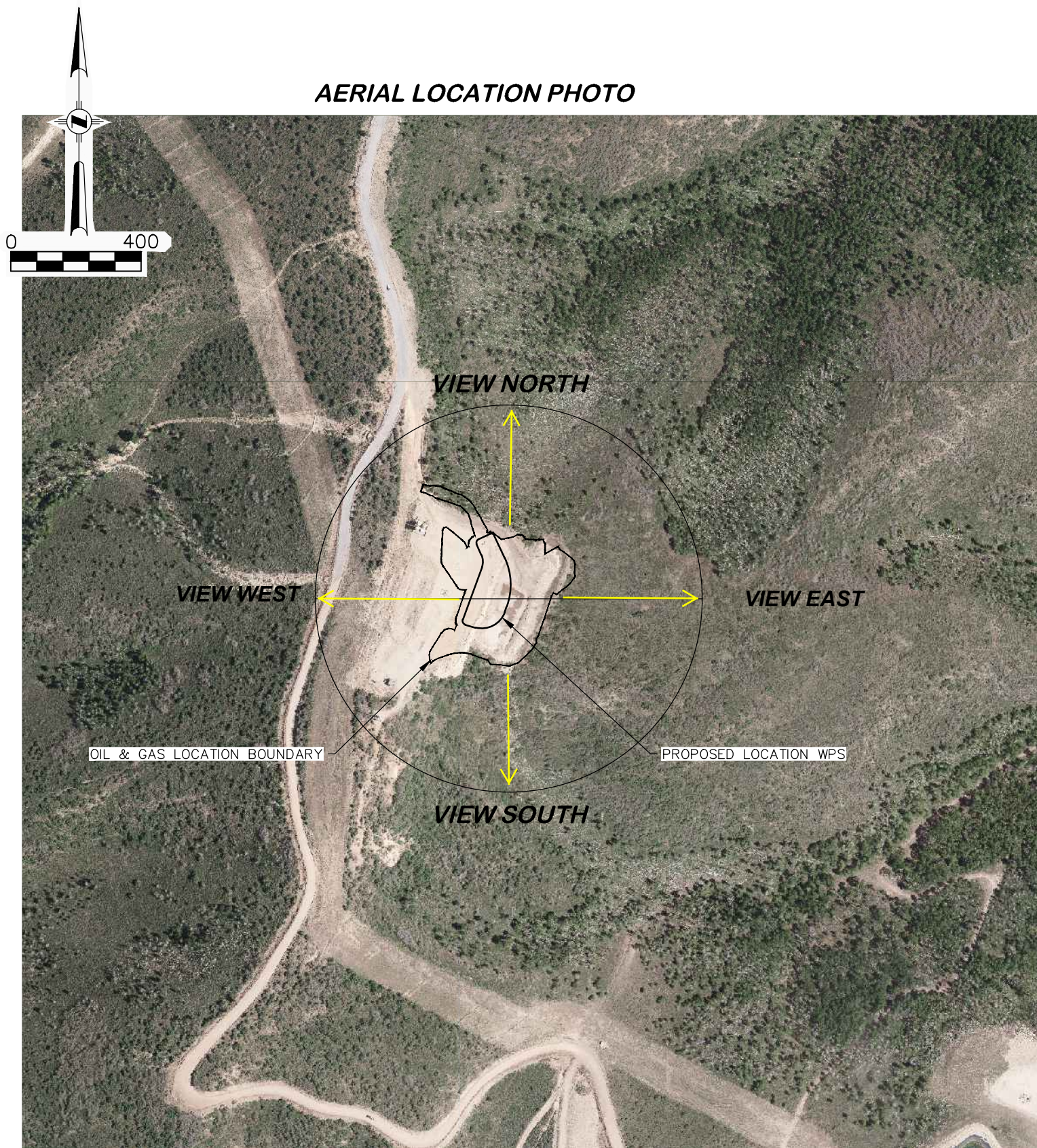
**AERIAL PHOTO SOURCE**  
AERIAL PHOTOGRAMMETRY  
TAKEN 6/8/2011

**PAD LOCATION:**  
LAT: N 39.519233  
LONG: W 108.200979

**CC 697-15-54 ANNEX**

<p><b>DRG RIFFIN &amp; ASSOCIATES, INC.</b> (307) 362-5028 1414 ELK ST., ROCK SPRINGS, WY 82901</p>		<b>LOCATION PHOTOS</b>	
		<p><b>LARAMIE ENERGY, LLC.</b> <b>CC 697-15-54 ANNEX</b> <b>SESE, SECTION 15, T. 6 S., R. 97 W., 6th P.M.,</b> <b>GARFIELD COUNTY, COLORADO</b></p>	
<b>DRAWN: 10/29/2021 - DEH</b>	<b>SCALE: NONE</b>		
<b>REVISED: 11/11/2021 - DEH</b>	<b>DRG JOB No. 21379</b>		
<b>ADDED OG LOCATION BNDY</b>	<b>304b(4) LOC PIC</b>		

**AERIAL LOCATION PHOTO**



AERIAL PHOTO SOURCE  
AERIAL PHOTOGRAMMETRY  
TAKEN 6/8/2011

**PAD LOCATION:**  
LAT: N 39.519233  
LONG: W 108.200979

**LOCATION PHOTOS**



**WELL LOCATION LOOKING NORTH**  
5/20/2021



**WELL LOCATION LOOKING SOUTH**  
5/20/2021



**WELL LOCATION LOOKING EAST**  
5/20/2021



**WELL LOCATION LOOKING WEST**  
5/20/2021

**CC 697-15-54 ANNEX**

DRAWN: 10/29/2021 - DEH	SCALE: NONE
REVISED: 11/11/2021 - DEH	DRG JOB No. 21379
ADDED OG LOCATION BNDY	304b(4) LOC PIC (2)

<b>LOCATION PHOTOS</b>  <b>LARAMIE ENERGY, LLC.</b> <b>CC 697-15-54 ANNEX</b> <b>SESE, SECTION 15, T. 6 S., R. 97 W., 6th P.M.,</b> <b>GARFIELD COUNTY, COLORADO</b>
---