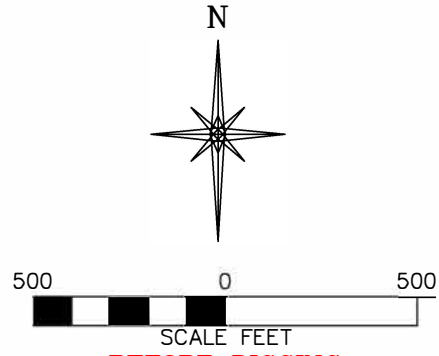


UNGRADED ELEVATION: 8604.7'
 FINAL ELEVATION: 8602.0'
 AREA OF DISTURBANCE: 2.9± ACRES
 AREA OF WORKING PAD SURFACE: 0.60± ACRES



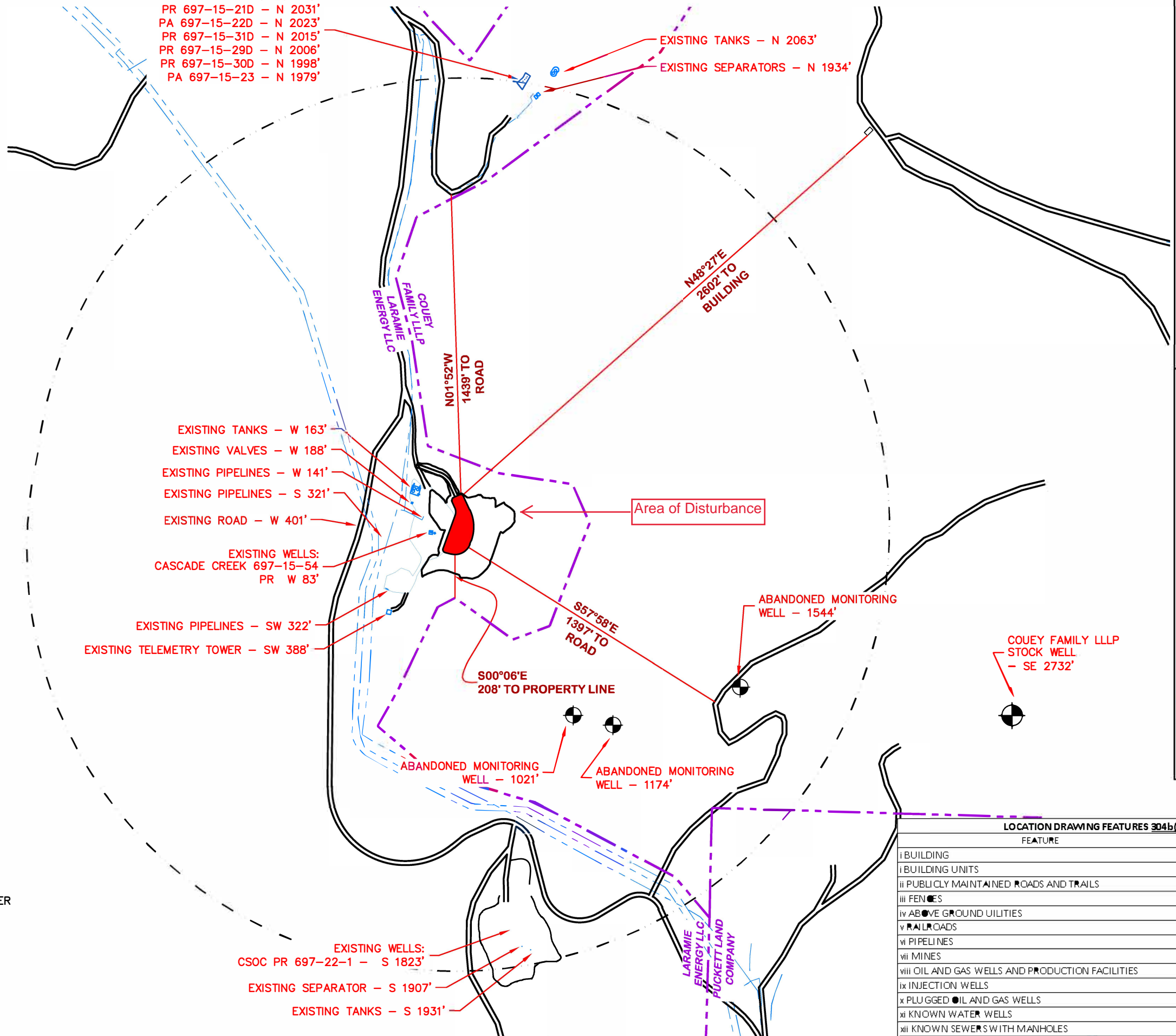
**BEFORE DIGGING
 CALL FOR
 UTILITY LINE LOCATION**

PAD LOCATION:
 LAT: N 39.519233
 LONG: W 108.200979

CC 697-15-54 ANNEX

EXISTING CASCADE CREEK
 697-15-23 PAD:
 PR 697-15-21D - N 2031'
 PA 697-15-22D - N 2023'
 PR 697-15-31D - N 2015'
 PR 697-15-29D - N 2006'
 PR 697-15-30D - N 1998'
 PA 697-15-23 - N 1979'

EXISTING TANKS - N 2063'
 EXISTING SEPARATORS - N 1934'



- WORKING PAD SURFACE
- 2000' WORKING PAD SURFACE BUFFER
- PROPOSED LOCATION DISTURBANCE
- EXISTING PRIVATE ROAD
- EXISTING PROPERTY LINE
- EXISTING PIPELINES
- EDGE OF EXISTING LOCATION/PAD

LOCATION DRAWING

LARAMIE ENERGY, LLC.
 CC 697-15-54 ANNEX
 SESE, SECTION 15, T. 6 S., R. 97 W., 6th P.M.,
 GARFIELD COUNTY, COLORADO

DRG RIFFIN & ASSOCIATES, INC.
 1414 ELK ST., ROCK SPRINGS, WY 82901
 (307) 962-5028

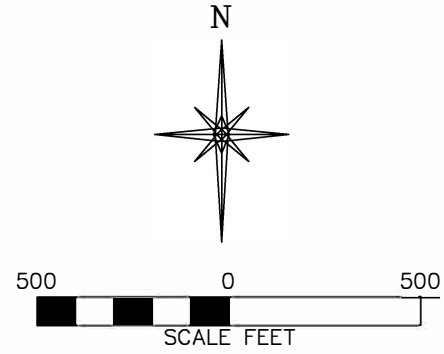
SCALE: 1" = 500'
 DRAWN: 10/29/2021 - DEH
 REVISED: N/A

DRG JOB No. 21379
 304b(7)A LOC DWG

LOCATION DRAWING FEATURES 304b(7)A	
FEATURE	DISTANCE
i BUILDING	0
ii BUILDING UNITS	0
iii PUBLICLY MAINTAINED ROADS AND TRAILS	0
iv FENCES	0
v ABOVE GROUND UTILITIES	0
vi RAILROADS	0
vii PIPELINES	AS SHOWN
viii MINES	0
ix OIL AND GAS WELLS AND PRODUCTION FACILITIES	AS SHOWN
x INJECTION WELLS	0
xi PLUGGED OIL AND GAS WELLS	1
xii KNOWN WATER WELLS	AS SHOWN
xiii KNOWN SEWERS WITH MANHOLES	0

UNGRADED ELEVATION: 8604.7'
 FINAL ELEVATION: 8602.0'
 AREA OF DISTURBANCE: 2.9± ACRES
 AREA OF WORKING PAD SURFACE: 0.60± ACRES

CC 697-15-54 ANNEX



**BEFORE DIGGING
 CALL FOR
 UTILITY LINE LOCATION**

PAD LOCATION:
 LAT: N 39.519233
 LONG: W 108.200979

EXISTING CASCADE CREEK
 697-15-23 PAD:
 PR 697-15-21D - N 2031'
 PA 697-15-22D - N 2023'
 PR 697-15-31D - N 2015'
 PR 697-15-29D - N 2006'
 PR 697-15-30D - N 1998'
 PA 697-15-23 - N 1979'

EXISTING TANKS - N 2063'

EXISTING SEPARATORS - N 1934'

EXISTING TANKS - W 163'

EXISTING VALVES - W 188'

EXISTING PIPELINES - W 141'

EXISTING PIPELINES - S 321'

EXISTING ROAD - W 401'

EXISTING WELLS:
 CASCADE CREEK 697-15-54
 PR W 83'

EXISTING PIPELINES - SW 322'

EXISTING TELEMETRY TOWER - SW 388'

N01°52'W
1439' TO ROAD

N48°27'E
2602' TO BUILDING

Area of Disturbance

S57°58'E
1397' TO ROAD

S00°06'E
208' TO PROPERTY LINE

ABANDONED MONITORING WELL - 1544'

COUEY FAMILY LLLP STOCK WELL - SE 2732'

ABANDONED MONITORING WELL - 1021'

ABANDONED MONITORING WELL - 1174'

EXISTING WELLS:
 CSOC PR 697-22-1 - S 1823'

EXISTING SEPARATOR - S 1907'

EXISTING TANKS - S 1931'

- WORKING PAD SURFACE
- 2000' WORKING PAD SURFACE BUFFER
- PROPOSED LOCATION DISTURBANCE
- EXISTING PRIVATE ROAD
- EXISTING PROPERTY LINE
- EXISTING PIPELINES
- EDGE OF EXISTING LOCATION/PAD

LOCATION DRAWING FEATURES 304b(7)A	
FEATURE	DISTANCE
i BUILDING	0
ii BUILDING UNITS	0
iii PUBLICLY MAINTAINED ROADS AND TRAILS	0
iv FENCES	0
v ABOVE GROUND UTILITIES	0
vi RAILROADS	0
vii PIPELINES	AS SHOWN
viii MINES	0
ix OIL AND GAS WELLS AND PRODUCTION FACILITIES	AS SHOWN
x INJECTION WELLS	0
xi PLUGGED OIL AND GAS WELLS	1
xii KNOWN WATER WELLS	AS SHOWN
xiii KNOWN SEWERS WITH MANHOLES	0

LOCATION DRAWING

LARAMIE ENERGY, LLC.
 CC 697-15-54 ANNEX
 SESE, SECTION 15, T. 6 S., R. 97 W., 6th P.M.,
 GARFIELD COUNTY, COLORADO

DRG RIFFIN & ASSOCIATES, INC.
 1414 ELK ST., ROCK SPRINGS, WY 82901

SCALE: 1" = 500'
 DRAWN: 10/29/2021 - DEH
 DRG JOB No. 21379
 REVISED: N/A
 304b(7)A LOC AERIAL

(307) 962-6028

**Annex Cuttings Facility
Location Drawing
Rule 304.b.(7)A**



Rule	Feature	Description of Features Located within 2,000 feet of WPS	Number
Rule 304.b.(7).A.i	<i>Building</i>	NONE	
Rule 304.b.(7).A.i	<i>All Building Units, with High Occupancy Building Units identified</i>	NONE	
Rule 304.b.(7).A.ii.	<i>Publicly maintained roads and trails</i>	NONE	
Rule 304.b.(7).A.iii.	<i>Fences</i>	NONE	
Rule 304.b.(7).A.iv.	<i>Above-ground utility lines</i>	NONE	
Rule 304.b.(7).A.v.	<i>Railroads</i>	NONE	
Rule 304.b.(7).A.vi.	<i>Pipelines or Pipeline markers</i>	AS SHOWN ON MAP	Pipeline locations are indicated on map
Rule 304.b.(7).A.vii.	<i>Mines</i>	NONE	
Rule 304.b.(7).A.viii.	<i>Oil and gas Wells and associated Production Facilities</i>	Cascade Creek 697-15-54: Producing Well: COGCC Location ID 335803 CSOC 697-22-1: Producing Well: COGCC Location ID 324169 CC 697-15-30D: Producing Well: COGCC Location ID 335595	3 Producing Wells. Additional equipment within 2000 feet includes separators, tanks.
Rule 304.b.(7).A.ix	<i>Known water wells</i>	No Active Water Wells are located within 2000 feet of the WPS. Three (3) abandoned monitoring wells exist within 2000 feet of the WPS.	No Active Water Wells
Rule 304.b.(7).A.x	<i>Plugged oil and gas Wells, including dry holes</i>	PLUGGED WELL: CC PA 697-15-23 Location ID 335595	1
Rule 304.b.(7).A.xi	<i>Injection Wells and associated facilities</i>	NONE	
Rule 304.b.(7).A.xii.	<i>Known sewers with manholes</i>	NONE	