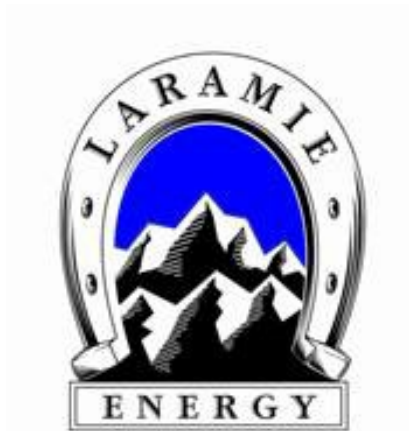


Annex Cuttings Facility

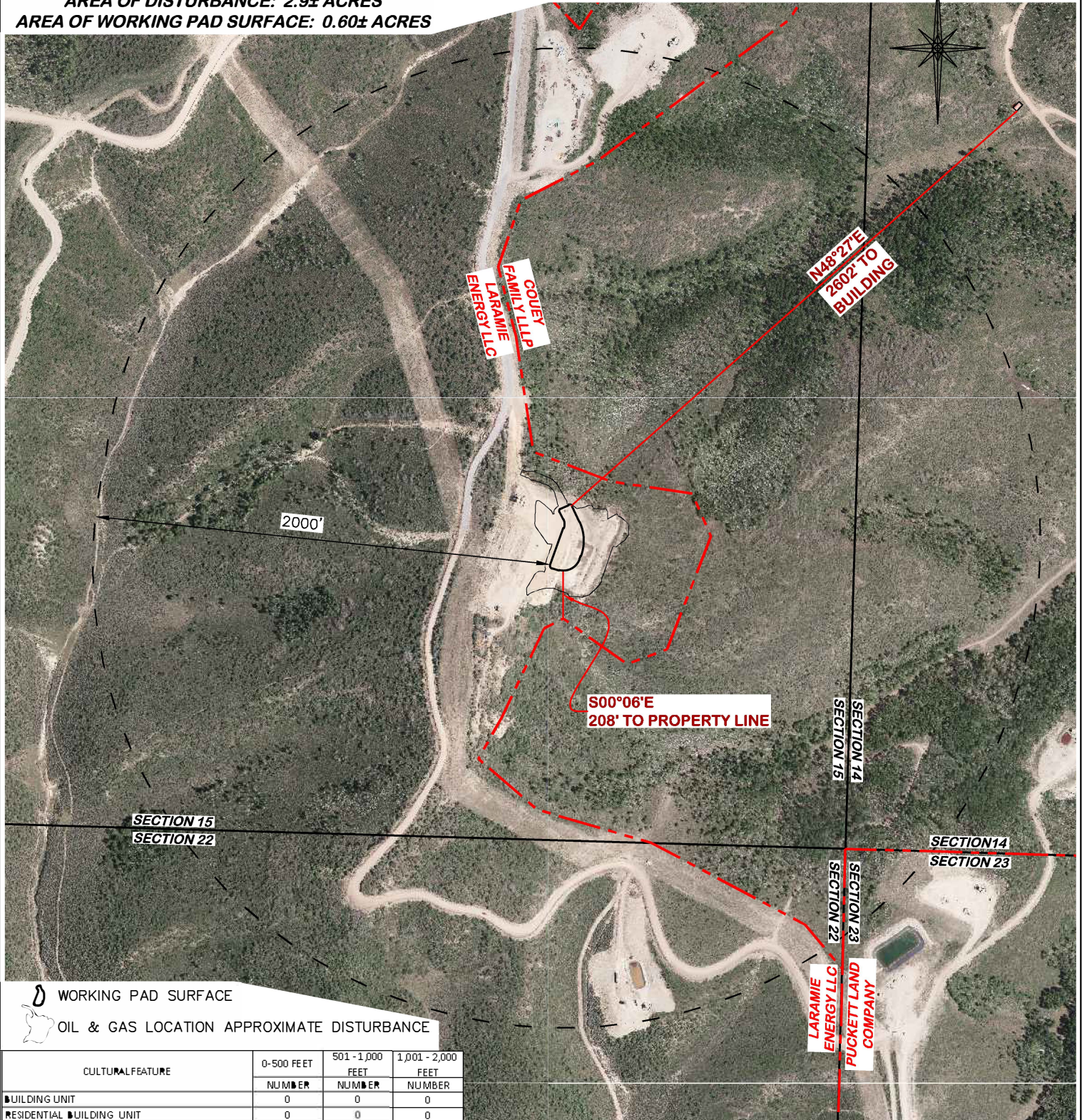
Cultural Distances COGCC Rule 304.b.(3)



**Laramie Energy, LLC
760 Horizon Drive, Suite 101
Grand Junction, CO 81506**

UNGRADED ELEVATION: 8604.7'
 FINAL ELEVATION: 8602.0'
 AREA OF DISTURBANCE: 2.9± ACRES
 AREA OF WORKING PAD SURFACE: 0.60± ACRES

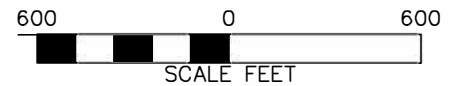
N



WORKING PAD SURFACE
 OIL & GAS LOCATION APPROXIMATE DISTURBANCE

CULTURAL FEATURE	0-500 FEET	501-1,000	1,001-2,000
	NUMBER	FEET NUMBER	FEET NUMBER
BUILDING UNIT	0	0	0
RESIDENTIAL BUILDING UNIT	0	0	0
HIGH OCCUPANCY BUILDING UNIT	0	0	0
SCHOOL PROPERTIES	0	0	0
SCHOOL FACILITIES	0	0	0
DESIGNATED OUTDOOR ACTIVITY AREA	0	0	0
SCHOOL WITHIN DISPROPORTIONALLY IMPACTED CO	0	0	0

Annex Cuttings Facility

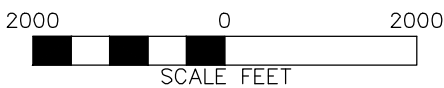
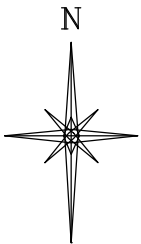
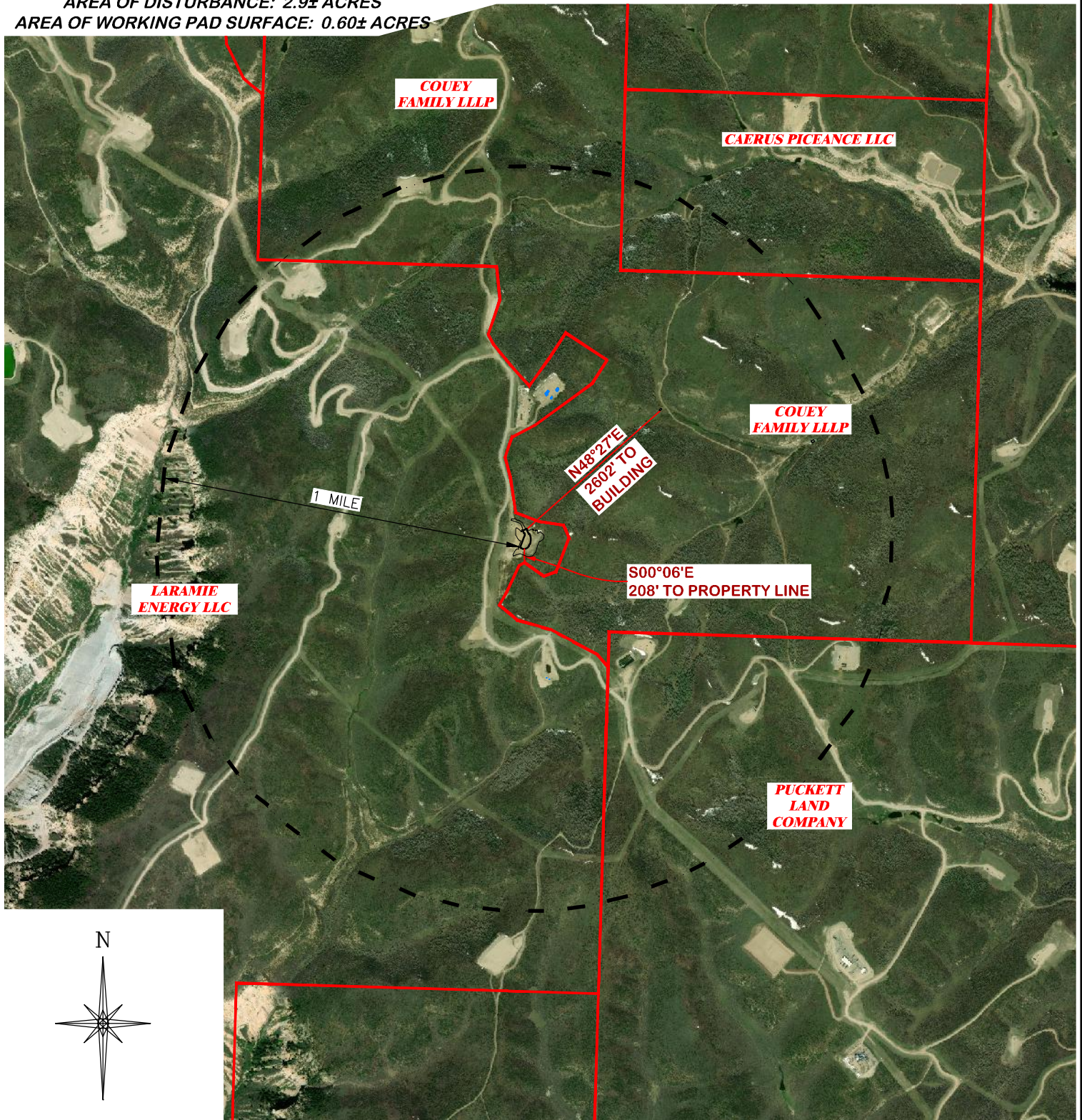


DRG RIFFIN & ASSOCIATES, INC.
 (307) 362-5028 1414 ELK ST., ROCK SPRINGS, WY 82901

DRAWN: 10/29/2021 - DEH	SCALE: 1" = 600'
REVISED: N/A	DRG JOB No. 21379
	304b(3)C CULTURAL

CULTURAL DISTANCES DRAWING 2 OF 2
CULTURAL DISTANCES - 2000 FT BUFFER
LARAMIE ENERGY, LLC.
CC 697-15-54 ANNEX CUTTINGS FACILITY
SESE, SECTION 15, T. 6 S., R. 97 W., 6th P.M.,
GARFIELD COUNTY, COLORADO

UNGRADED ELEVATION: 8604.7'
 FINAL ELEVATION: 8602.0'
 AREA OF DISTURBANCE: 2.9± ACRES
 AREA OF WORKING PAD SURFACE: 0.60± ACRES



— Parcel Boundary



WORKING PAD SURFACE



OIL & GAS LOCATION APPROXIMATE DISTURBANCE

ANNEX CUTTING FACILITY

DRG RIFFIN & ASSOCIATES, INC.
 (307) 362-5028 1414 ELK ST., ROCK SPRINGS, WY 82901

DRAWN: 10/29/2021 - DEH	SCALE: 1" = 2000'
REVISED: N/A	DRG JOB No. 21379
	304b(3)C MILE CULTURAL

CULTURAL DISTANCES DRAWING 1 OF 2

**CULTURAL DISTANCES
 1-MILE RADIUS
 LARAMIE ENERGY, LLC.
 CC 697-15-54 ANNEX
 SESE, SECTION 15, T. 6 S., R. 97 W., 6th P.M.,
 GARFIELD COUNTY, COLORADO**

LARAMIE ENERGY

CC 697-15-54 ACF CULTURAL DISTANCES

SESE, SECTION 15, T6S, R97W, 6th PM

DATE: 7/27/2021 - D. HENDERHAN

REVISED 10/26/2021 - D. HENDERHAN - MISC REVISED

DISTANCE FROM WORKING PAD SURFACE 304(b)3A																			
	BUILDING		RESIDENTIAL BUILDING UNIT		HIGH OCCUPANCY BLDG UNIT		SCHOOL FACILITY		DOAA		PUBLIC ROAD		ABOVE GROUND UTILITY		RAILROAD		PROPERTY LINE		
	DIRECTION	LENGTH	DIRECTION	LENGTH	DIRECTION	LENGTH	DIRECTION	LENGTH	DIRECTION	LENGTH	DIRECTION	LENGTH	DIRECTION	LENGTH	DIRECTION	LENGTH	DIRECTION	LENGTH	
WPS	N48°E	2602'		5280'		5280'		5280'		5280'		5280'		5280'		5280'		S	208'

DISTANCE FROM WORKING PAD SURFACE - DISPROPORTIONATELY IMPACTED COMMUNITY						
WPS	RESIDENTIAL BUILDING		HIGH OCCUPANCY		SCHOOL FACILITY	
	DIRECTION	LENGTH	DIRECTION	LENGTH	DIRECTION	LENGTH
		N/A		N/A		N/A

CULTURAL FEATURE INFORMATION 304b(3)B			
CULTURAL FEATURE	0-500 FEET	501 - 1,000 FEET	1,001 - 2,000 FEET
	NUMBER	NUMBER	NUMBER
BUILDING UNIT	0	0	0
RESIDENTIAL BUILDING UNIT	0	0	0
HIGH OCCUPANCY BUILDING UNIT	0	0	0
SCHOOL PROPERTIES	0	0	0
SCHOOL FACILITIES	0	0	0
DESIGNATED OUTDOOR ACTIVITY AREA	0	0	0
SCHOOL WITHIN DISPROPORTIONALLY IMPACTED COMMUNITY	0	0	0