

**Annex Cuttings Facility
Water Plan
Rule 304.c.(18)**



**Laramie Energy, LLC
760 Horizon Drive, Suite 101
Grand Junction, CO 81506**

July 2021

**Annex Cuttings Facility
Water Plan
Rule 304.c.(18)**



Rule 304.c.(18) Water Plan

A plan identifying the planned source of water for drilling and completion operations.

The following plan addresses the requirements for Rule 304.c.(18) Water Plan under 300 Series of the Colorado Oil and Gas Conservation Commission's (COGCC) Rules.

Laramie Energy, LLC (Laramie) (Operator # 10433) is proposing a non-commercialized E&P Waste Management Facility for the treatment and disposal of drill cuttings from three proposed well pad locations within Laramie's Cascade Creek operations area. The Annex Cuttings Facility (ACF), a drill cuttings management area, main function will be to accommodate drill cuttings material from three well sites proposed in the *Laramie Energy 2021 Cascade Creek Oil and Gas Development Plan*. The facility will only manage the treatment and beneficial reuse of cuttings generated by Laramie's drilling activities.

Location

The site's location is centralized to Laramie's Cascade Creek operations area. The site is located on Parcel #216921400026 within Garfield County, Colorado (**Vicinity Map - Appendix A**). The parcel is located 12.2 miles north of De Beque, Colorado. The site is located approximately 16 miles northeast of De Beque, Colorado and 21.8 miles northeast by access route. Garfield County defines the subject parcel as the Resource Lands zone district.

The legal description of the site is: SESE of Section 15, Township 6 South, Range 97 West, 6th P.M.

Latitude: 39.519233°; Longitude: -108.200979°.

Rule 304.c.(18).A. *The planned source and volume of all surface water and Groundwater to be used and the coordinates of the planned source of water*

Phases at the ACF will consist of grading activities, transportation of drill cuttings, and treatment of cuttings. Drilling, completions, flowback, and production operational stages will not occur at the ACF.

The only activity that will require the use of water at the ACF is dust abatement. Only fresh water will be utilized at the ACF. All dust suppression activities will adhere to the ACF Dust Mitigation Plan, provided in the Form 2A application.

During initial construction and grading activities, an estimated 100 barrels of fresh water will be used for dust abatement. Final grading and reclamation activities will use an estimate 200 barrels. During the transportation and treatment phases of the ACF, a negligible amount of fresh will be used for dust mitigation for the access road. Fresh water will be trucked to and applied at the ACF using a water truck.

**Annex Cuttings Facility
Water Plan
Rule 304.c.(18)**



Table 1: Operational – Water Use (barrels) – ACF

Activity	Days	Fresh Water
Initial Grading	10	100
Final Grading and Reclamation	27	200
TOTAL		300

Fresh Water Source

The Firewater Pond (**Fresh Water Source Map – Appendix B**) is located on Laramie’s property. Water from the pond is an available source when no calls on the river (referred to as “free water”). Free water typically is available during spring run/melt-off. Historically, the Roan Creek goes on call during the month of July and remains on call until September. During years of reduce precipitation, the water may go on call at Cameo (Colorado River). Though Cameo may be placed on call at any time of the year, the call most commonly occurs in October. Fresh water is transferred to from Firewater Pond to Pond 4 or Pond 13 via pipelines.

Table 2: Fresh Water Source – CC 0697-15-08

Name	Owner	Parcel #	Coordinates: Latitude/ Longitude	Water Source
Firewater Pond	Laramie Energy, LLC 1001 17 th Street Suite 1900 Denver, CO 80202	2169-2140- 0026	39.542880°/-108.221807°	Spring

Fresh water may also be purchased from Knowles Transportation (Knowles) or the Kobe Water Authority (Kobe). Both Knowles and Kobe have established water rights and fresh water is source from the Colorado River utilizing water rights.

Table 3: Secondary Water Sources - Purchased

Owner	Water Source	Transportation Method
Kobe Water Authority	Colorado River – Debeque, CO	Water Line
Knowles Transportation Enterprises	Colorado River	Trucking

Rule 304.c.(18).B. *The seller’s name and address if water is to be purchased*

- **Knowles Transportation Enterprises** - PO Box 40656, Grand Junction, CO 81504
- **Kobe Water Authority** - Colorado River Water Conservation District
201 Centennial St., Suite 200, Glenwood Springs, CO 81601

Rule 304.c.(18).C. *If recycled or reused water is anticipated to be used, a description of the source of that water, background concentrations of chemicals listed in Table 437-1, anticipated method of transporting the water, and anticipated volumes to be used in addition to the reuse and recycling plan requirements of Rule 905.a.(3)*

Rule 304.c.(18).C, Rule 437, and Rule 905.a.(3) is not applicable to the proposed facility. Recycled or reused water will not be utilized at the ACF.

**Annex Cuttings Facility
Water Plan
Rule 304.c.(18)**



Rule 304.c.(18).D. *If fresh water is anticipated to be used, a description of why the Operator does not intend to use recycled or reused water.*

Water will only be utilized for dust abatement practices. Per COGCC Rule 427.c.1, Laramie will not apply produced water for dust suppression. Laramie will adhere to COGCC 427.c.(2) and will only utilize fresh water to conduct dust suppression activities within 300 feet of the ordinary high-water mark of any water body.

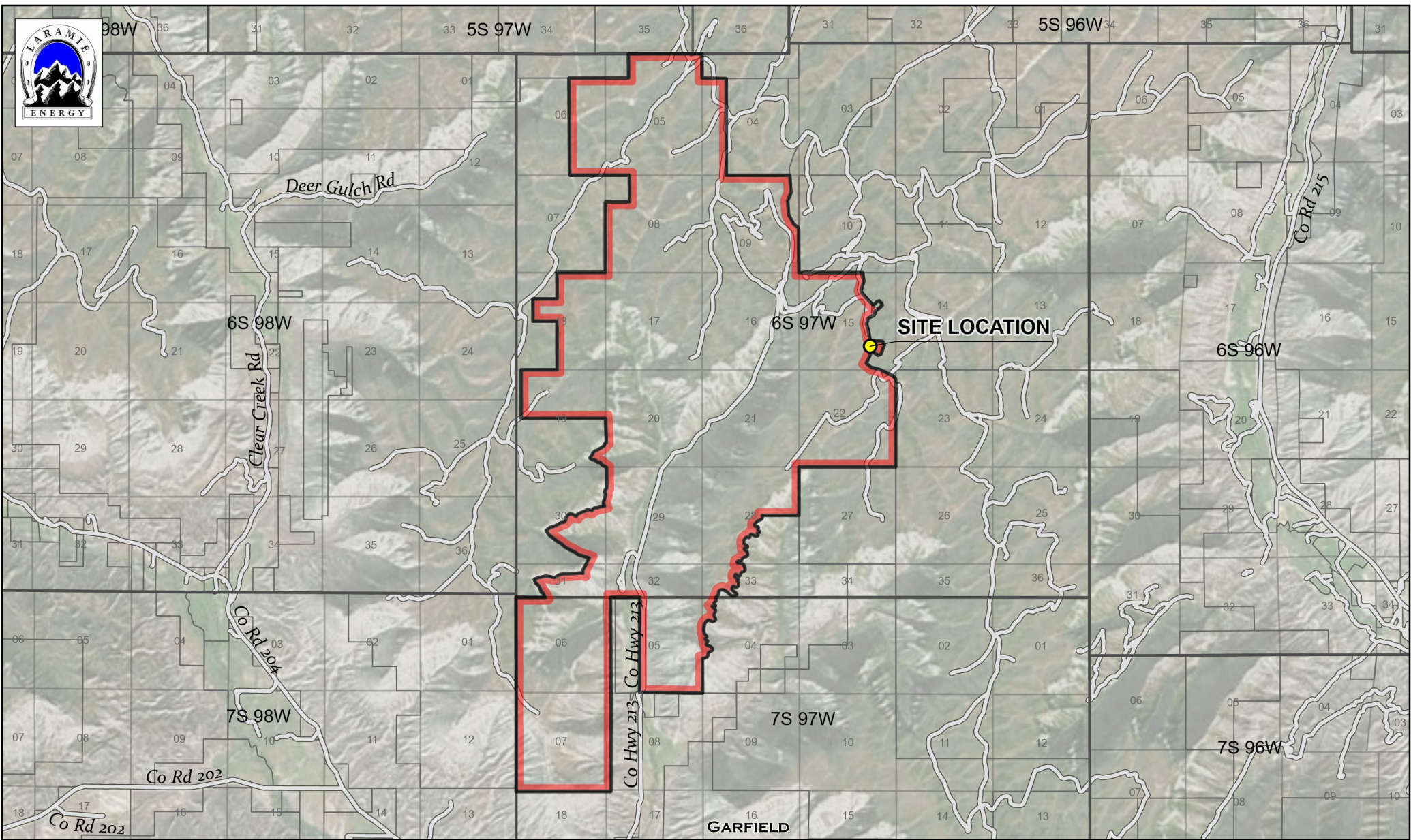
Appendix List	
Appendix A	Vicinity Map
Appendix B	Fresh Water Source and Storage Map

**Annex Cuttings Facility
Water Plan
Rule 304.c.(18)**



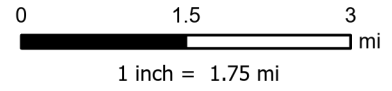
Appendix A

Vicinity Map



Reclamation Status

Garfield County Parcels Parcel



Project No: 020-014
Map By: NDB
Date: 9/28/2020

LOCATION VICINITY MAP
CASCADE CREEK 697-15-54
ANNEX CUTTING FACILITY
LARAMIE ENERGY
GARFIELD COUNTY, COLORADO



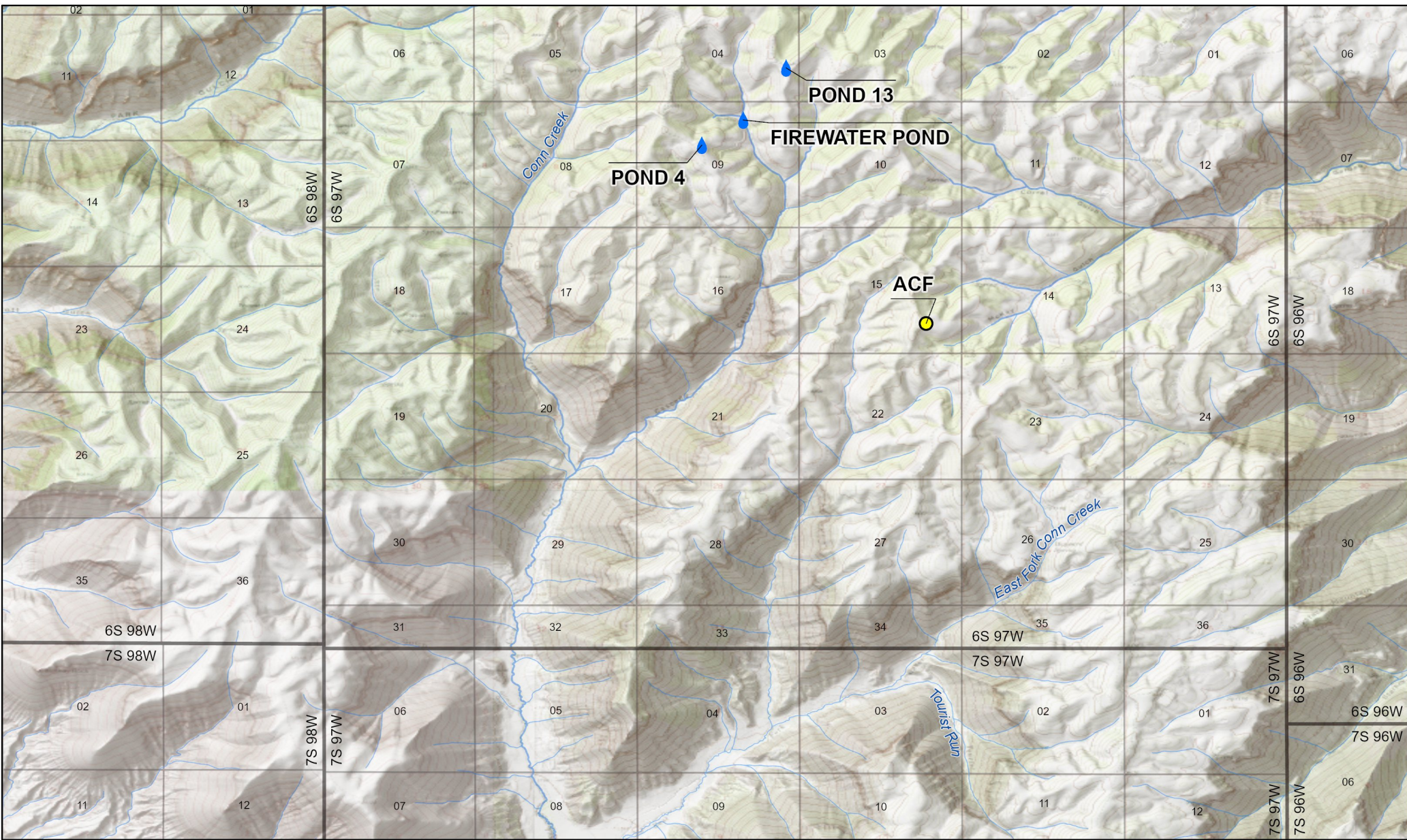
330 Grand Avenue, Unit C
Grand Junction, CO 81501
970-549-1015

Figure
2





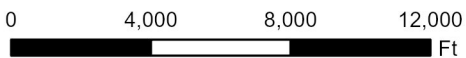
Appendix B

Fresh Water Source and Storage Map

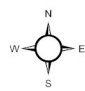


LEGEND

-  Pond Location
-  Site Location



1 inch = 5,500 ft



Project No:	021-036
Map By:	NDB
Date:	7/21/2021

Fresh Water Source and Storage Map
 Cascade Creek 697-15-54 Annex Cutting Facility
 Laramie Energy
 Garfield County, Colorado
 SWSE, Section 15, T6S R97W, 6th P.M.



330 Grand Avenue, Unit C
 Grand Junction, CO 81501
 970-549-1015

