

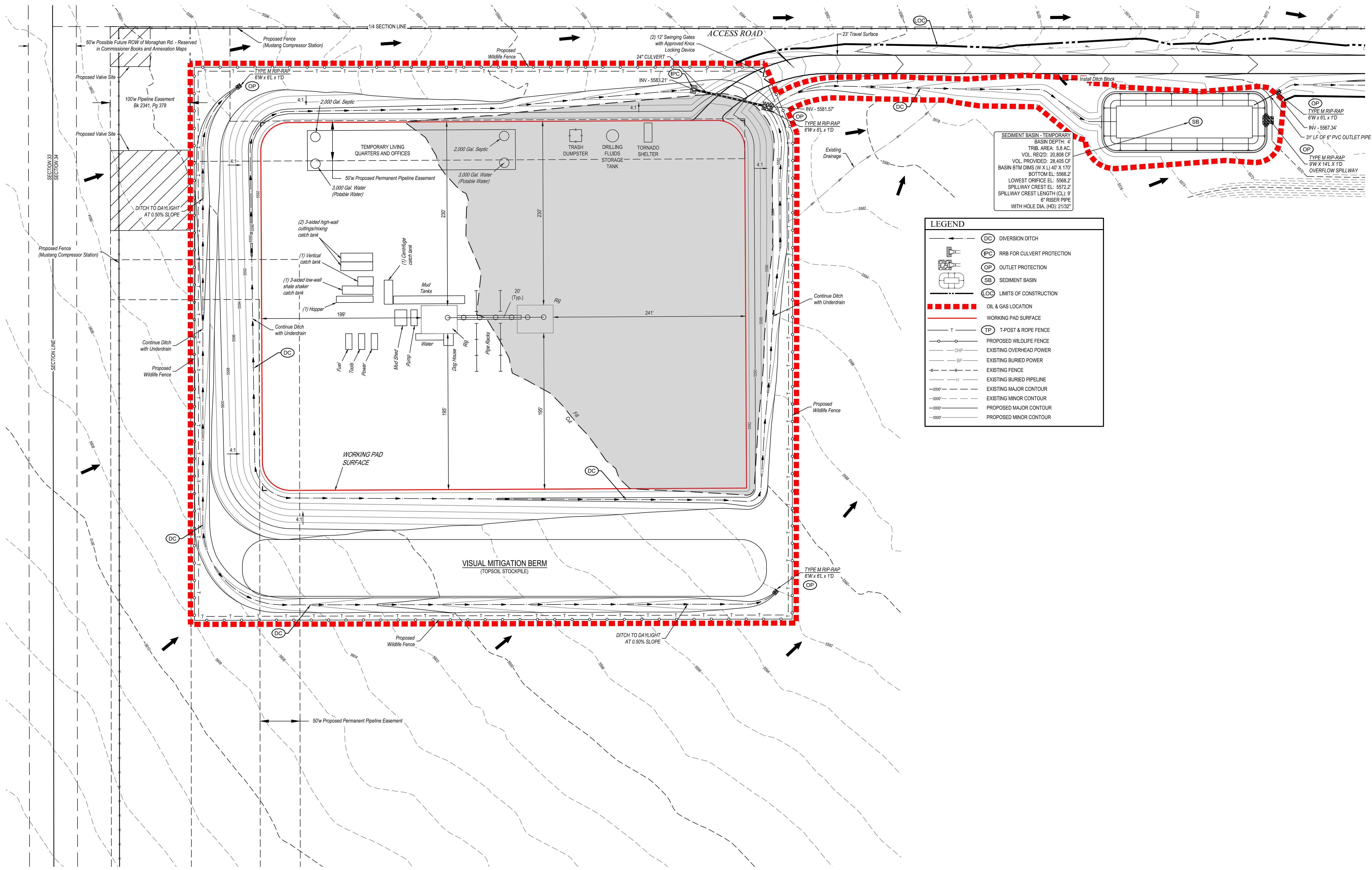
<b>SURVEYED BY</b>	MATT MILLER, O.R.	10-27-20	<b>SCALE</b>
<b>DRAWN BY</b>	C.IVIE	11-24-20	1" = 60'

**CONSTRUCTION LAYOUT - PLAN VIEW**

**UELS, LLC**  
Corporate Office \* 85 South 200 East  
Vernal, UT 84078 \* (435) 789-1017

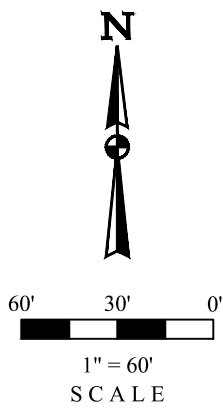






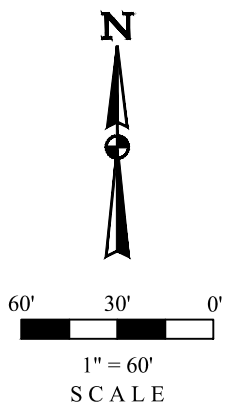
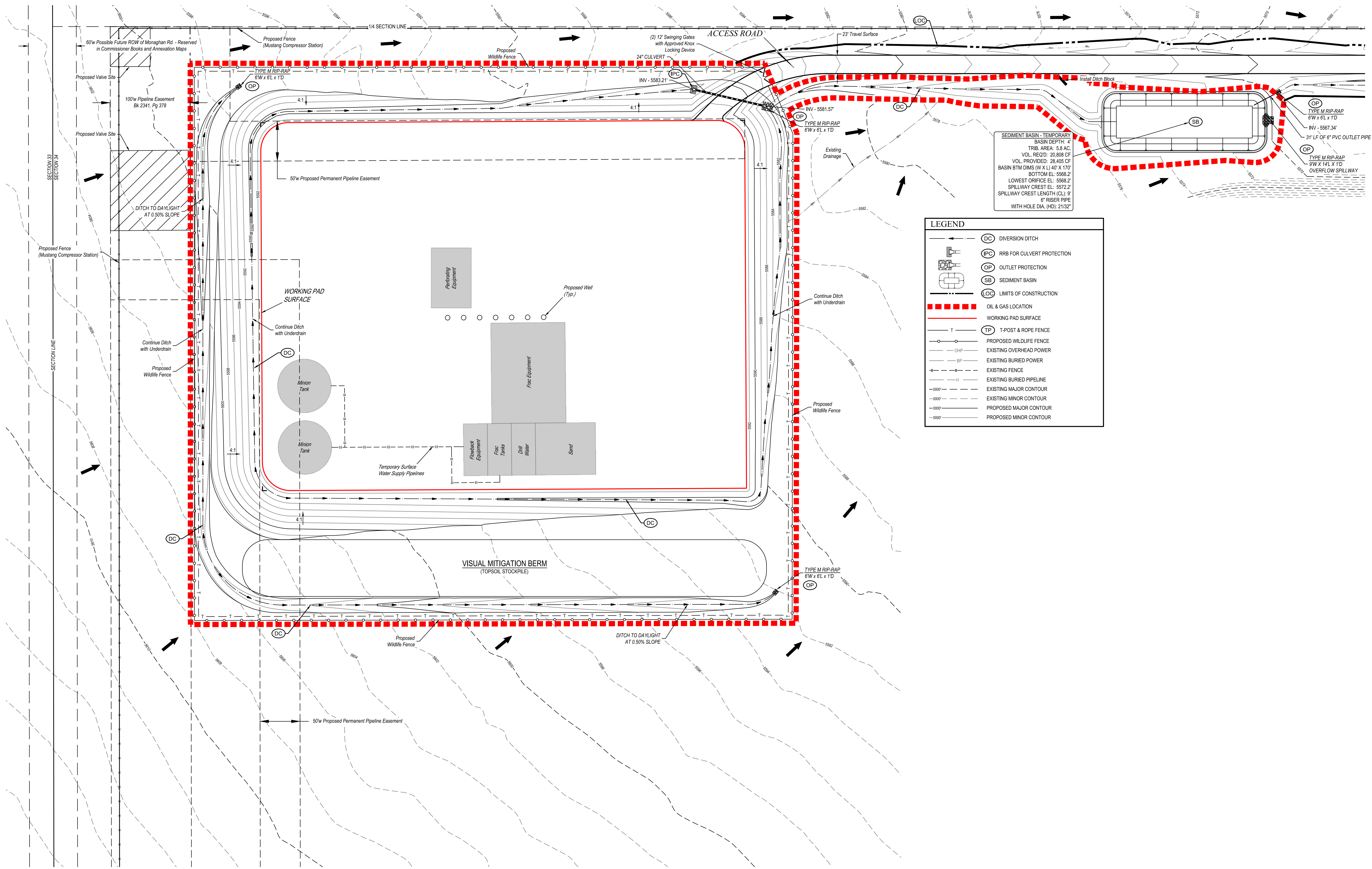
SEDIMENT BASIN - TEMPORARY  
BASIN DEPTH: 4'  
TRIB. AREA: 5.8 AC.  
VOL. REQ'D: 20,808 CF  
VOL. PROVIDED: 28,405 CF  
BASIN BTM DIMS (W X L): 40' X 170'  
BOTTOM EL.: 5568.2'  
LOWEST ORIFICE EL.: 5568.2'  
SPILLWAY CREST EL.: 5572.2'  
SPILLWAY CREST LENGTH (CL): 9'  
6" RISER PIPE  
WITH HOLE DIA. (HD): 21/32"

LEGEND	
	DC DIVERSION DITCH
	IPC RRB FOR CULVERT PROTECTION
	OP OUTLET PROTECTION
	SB SEDIMENT BASIN
	LOC LIMITS OF CONSTRUCTION
	OIL & GAS LOCATION
	WORKING PAD SURFACE
	TP T-POST & ROPE FENCE
	PROPOSED WILDLIFE FENCE
	CHP EXISTING OVERHEAD POWER
	BP EXISTING BURIED POWER
	EXISTING FENCE
	EXISTING BURIED PIPELINE
	EXISTING MAJOR CONTOUR
	EXISTING MINOR CONTOUR
	PROPOSED MAJOR CONTOUR
	PROPOSED MINOR CONTOUR



NOTES:  
1 Overall working pad surface = 605' x 460'





SEDIMENT BASIN - TEMPORARY  
BASIN DEPTH: 4'  
TRIB. AREA: 5.8 AC.  
VOL. REQ'D: 20,808 CF  
VOL. PROVIDED: 28,405 CF  
BASIN BTM DIMS (W X L): 40' X 170'  
BOTTOM EL.: 5568.2'  
LOWEST ORIFICE EL.: 5568.2'  
SPILLWAY CREST EL.: 5572.2'  
SPILLWAY CREST LENGTH (CL): 9'  
6" RISER PIPE  
WITH HOLE DIA. (HD): 21/32"

LEGEND	
	DC DIVERSION DITCH
	IPC RRB FOR CULVERT PROTECTION
	OP OUTLET PROTECTION
	SB SEDIMENT BASIN
	LOC LIMITS OF CONSTRUCTION
	OIL & GAS LOCATION
	WORKING PAD SURFACE
	TP T-POST & ROPE FENCE
	PROPOSED WILDLIFE FENCE
	CHP EXISTING OVERHEAD POWER
	BP EXISTING BURIED POWER
	EX EXISTING FENCE
	EBP EXISTING BURIED PIPELINE
	EMC EXISTING MAJOR CONTOUR
	EMC EXISTING MINOR CONTOUR
	PMC PROPOSED MAJOR CONTOUR
	PMC PROPOSED MINOR CONTOUR

NOTES:  
Contours shown at 2' intervals.



UEL, LLC  
Corporate Office • 85 South 200 East  
Vernal, UT 84078 • (435) 789-1017

REV: 1 08-13-21 C.C. (UPDATE OIL & GAS LOCATION)

CRESTONE PEAK  
RESOURCES OPERATING LLC  
BLUE 3-65 33-32-31 1BH, 2AH, 2BH, 3AH, 3BH, 4AH, & 4BH  
NW 1/4 SW 1/4, SECTION 34, T3S, R65W, 6th P.M.  
ADAMS COUNTY, COLORADO

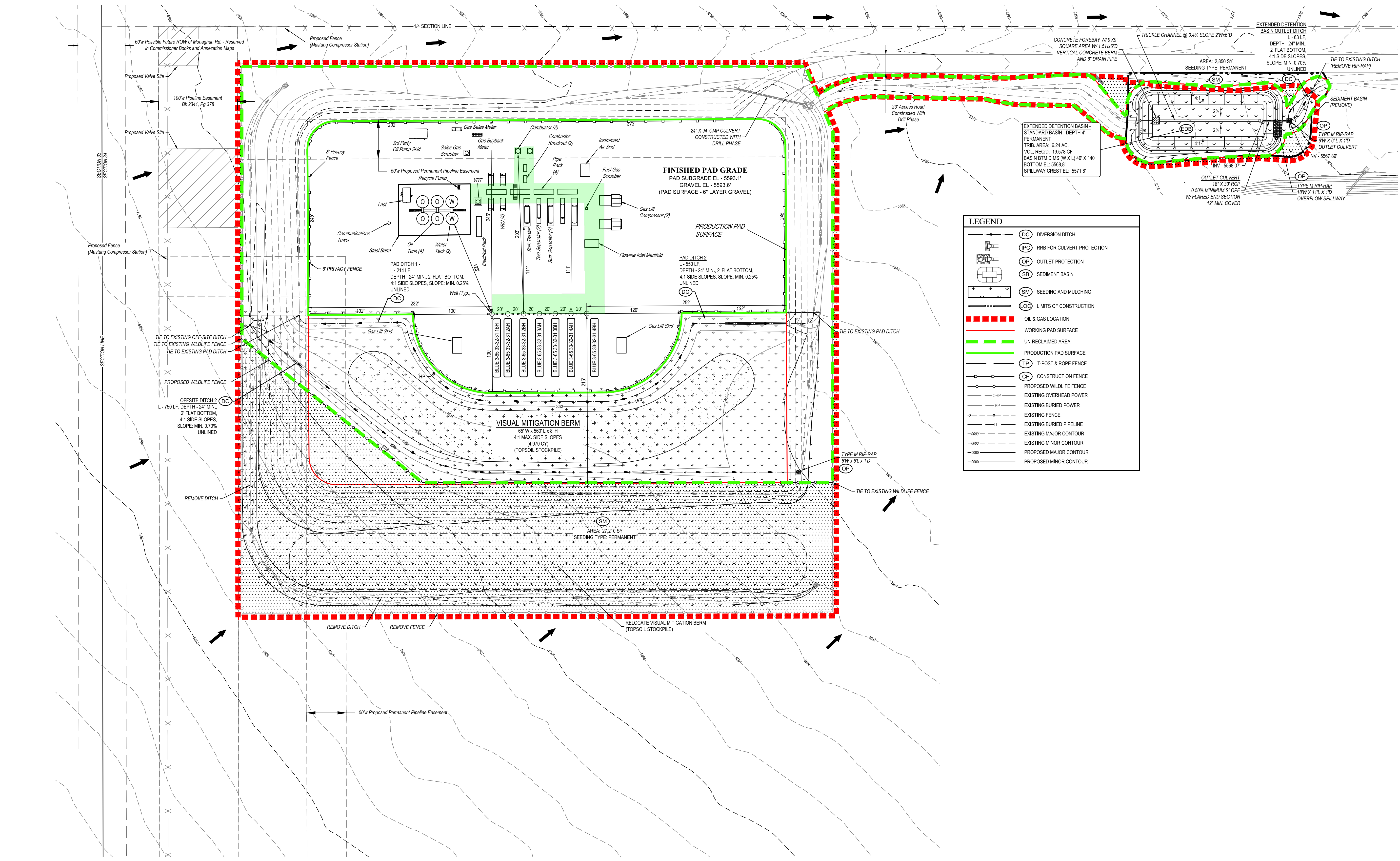
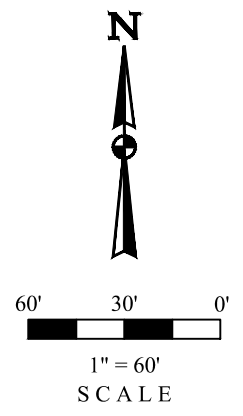
SURVEYED BY	MATT MILLER, O.R.	10-27-20	SCALE
DRAWN BY	C.C.	08-03-21	1" = 60'

PRELIMINARY WELL COMPLETION & STIMULATION LAYOUT









LEGEND	
	DC DIVERSION DITCH
	IPC RRB FOR CULVERT PROTECTION
	OP OUTLET PROTECTION
	SB SEDIMENT BASIN
	SM SEEDING AND MULCHING
	LOC LIMITS OF CONSTRUCTION
	OIL & GAS LOCATION
	WORKING PAD SURFACE
	UN-RECLAIMED AREA
	PRODUCTION PAD SURFACE
	TP T-POST & ROPE FENCE
	CF CONSTRUCTION FENCE
	PROPOSED WILDLIFE FENCE
	CHP EXISTING OVERHEAD POWER
	BP EXISTING BURIED POWER
	EXISTING FENCE
	BP EXISTING BURIED PIPELINE
	EXISTING MAJOR CONTOUR
	EXISTING MINOR CONTOUR
	PROPOSED MAJOR CONTOUR
	PROPOSED MINOR CONTOUR

APPROXIMATE UN-RECLAIMED DISTURBANCE = 9.285 ACRES  
APPROXIMATE RECLAIMED DISTURBANCE = 3.694 ACRES  
TOTAL OIL & GAS LOCATION = 12.979 ACRES

NOTES:  
• Contours shown at 2' intervals.  
• Overall working pad surface = 605' x 460'