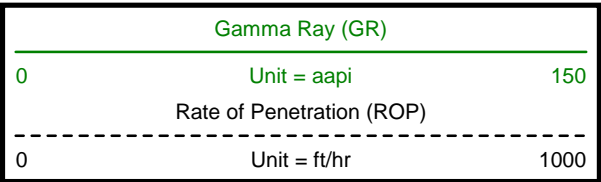


Remarks
BILL BARRETT CORPORATION PRODUCTION AFE# 19403D
SCIENTIFIC DRILLING INTERNATIONAL JOB# 341412
ALL REFERENCES IN THE DEPTH TRACK ARE AT BIT DEPTH.
ALL DATA IS MEMORY DATA UNLESS STATED OTHERWISE.
FLAT AVERAGE FILTER OF 1.00 FT APPLIED TO GAMMA RAY CURVE
FLAT AVERAGE FILTER OF 1.00 FT APPLIED TO RATE OF PENETRATION CURVE
FLAT AVERAGE FILTER OF 1.00 FT APPLIED TO HOOKLOAD (MAX) CURVE
FLAT AVERAGE FILTER OF 1.00 FT APPLIED TO WEIGHT-ON-BIT (SURF,MAX) CURVE
RUN #1: MWD / GAMMA RAY LOGGING RUN
SENSOR S/N: PULSER = 128-098 / CONT = 257 / MWD EYE = 0229 / GAMMA RAY = 1297
BIT TO SENSOR OFFSETS: SURVEY = 57.35 FT. / GAMMA RAY = 40.2 FT.
RUN #2: MWD / GAMMA RAY LOGGING RUN
SENSOR S/N: PULSER = 128-337 / CONT = 456 / MWD EYE = 1046 / GAMMA RAY = 5601
BIT TO SENSOR OFFSETS: SURVEY = 62.11 FT. / GAMMA RAY = 58.51 FT.
RUN #3: MWD / GAMMA RAY LOGGING RUN
SENSOR S/N: PULSER = 78-123 / CONT = 715 / MWD EYE = 0164 / GAMMA RAY = 1131
BIT TO SENSOR OFFSETS: SURVEY = 55.44 FT. / GAMMA RAY = 46.86 FT.
MNEMONICS LIST:
GR = GAMMA RAY
ROP = RATE OF PENETRATION

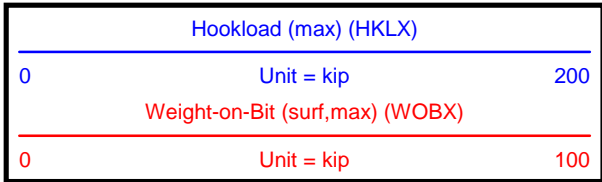
[illegible]

All interpretations are opinions based on inferences from electrical and other measurements and we cannot, and do not guarantee the accuracy or correctness of any interpretations, and we shall not, except in the case of gross or willful negligence on our part, be liable or responsible for any loss, costs, damages or expenses incurred or sustained by anyone resulting from any interpretation made by any of our officers, agents or employees. These interpretations are also subject to our general terms and conditions as set out in our current price schedule.

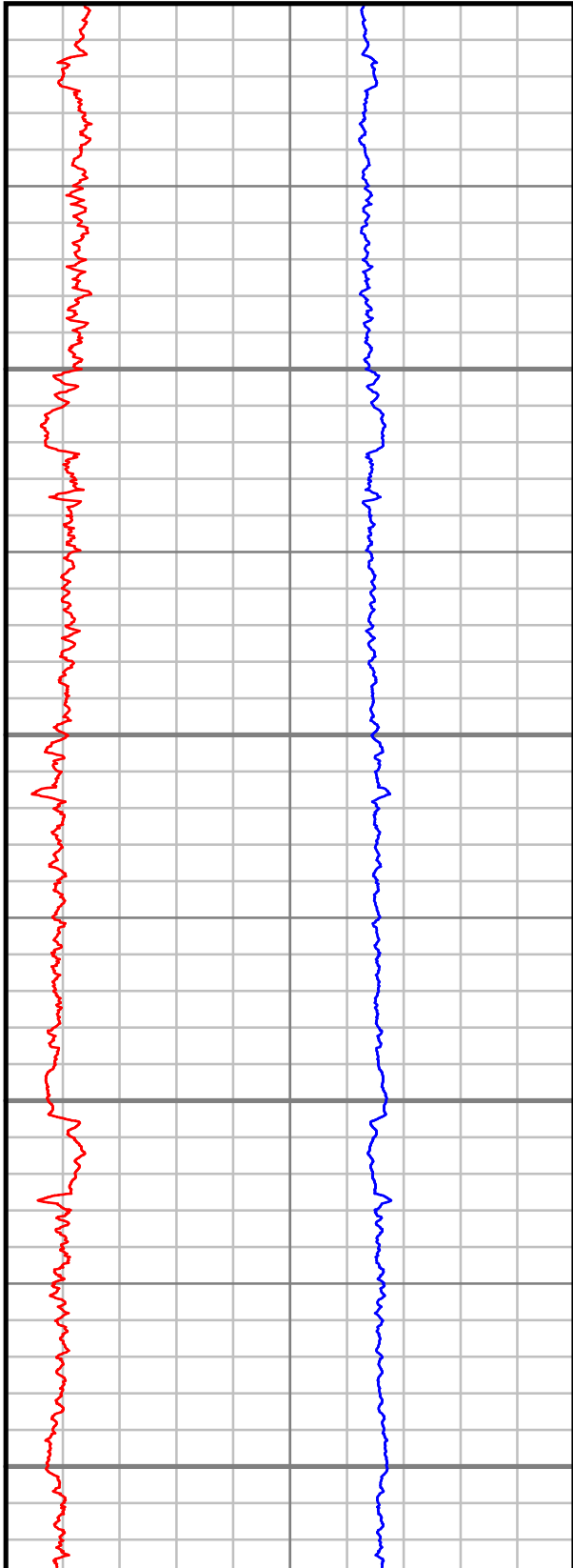
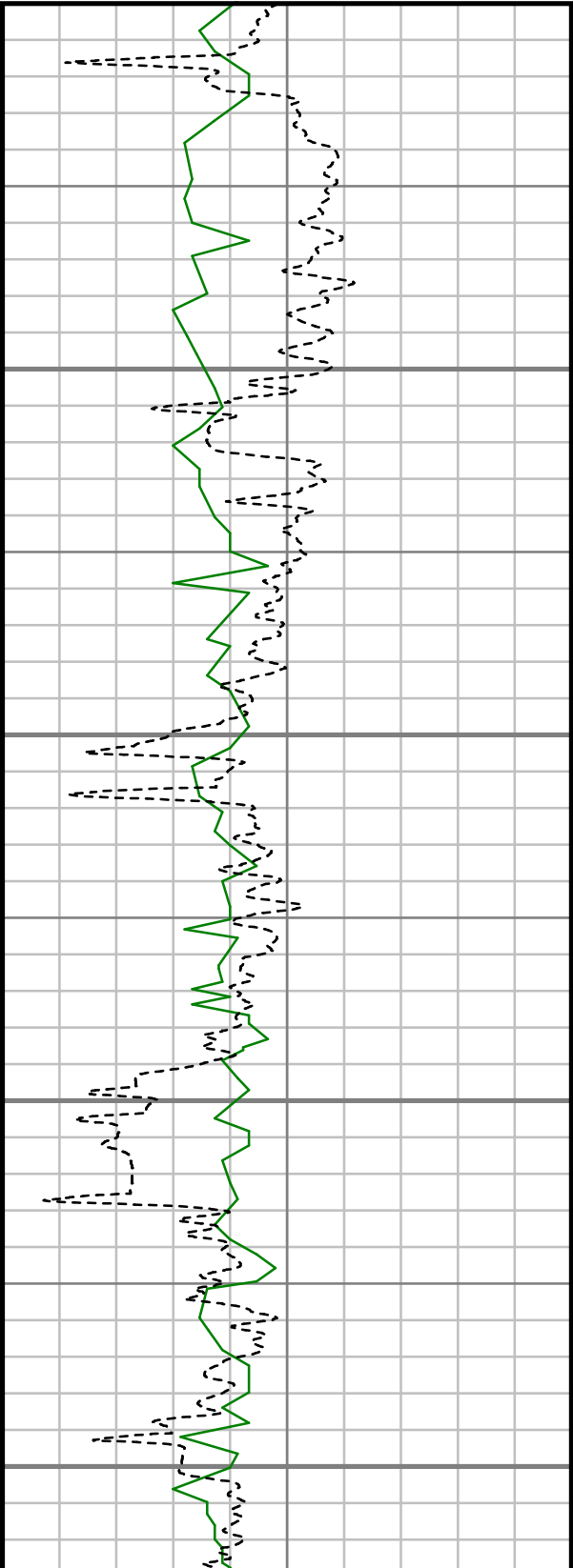
BILL BARRETT CORPORATION
ANSCHUTZ EQUUS FARMS 4-62-9-3340C2
WATTENBERG FIELD
WELD COUNTY, COLORADO
05-123-42406



MEASURED DEPTH
1:600 (ft)



Comments

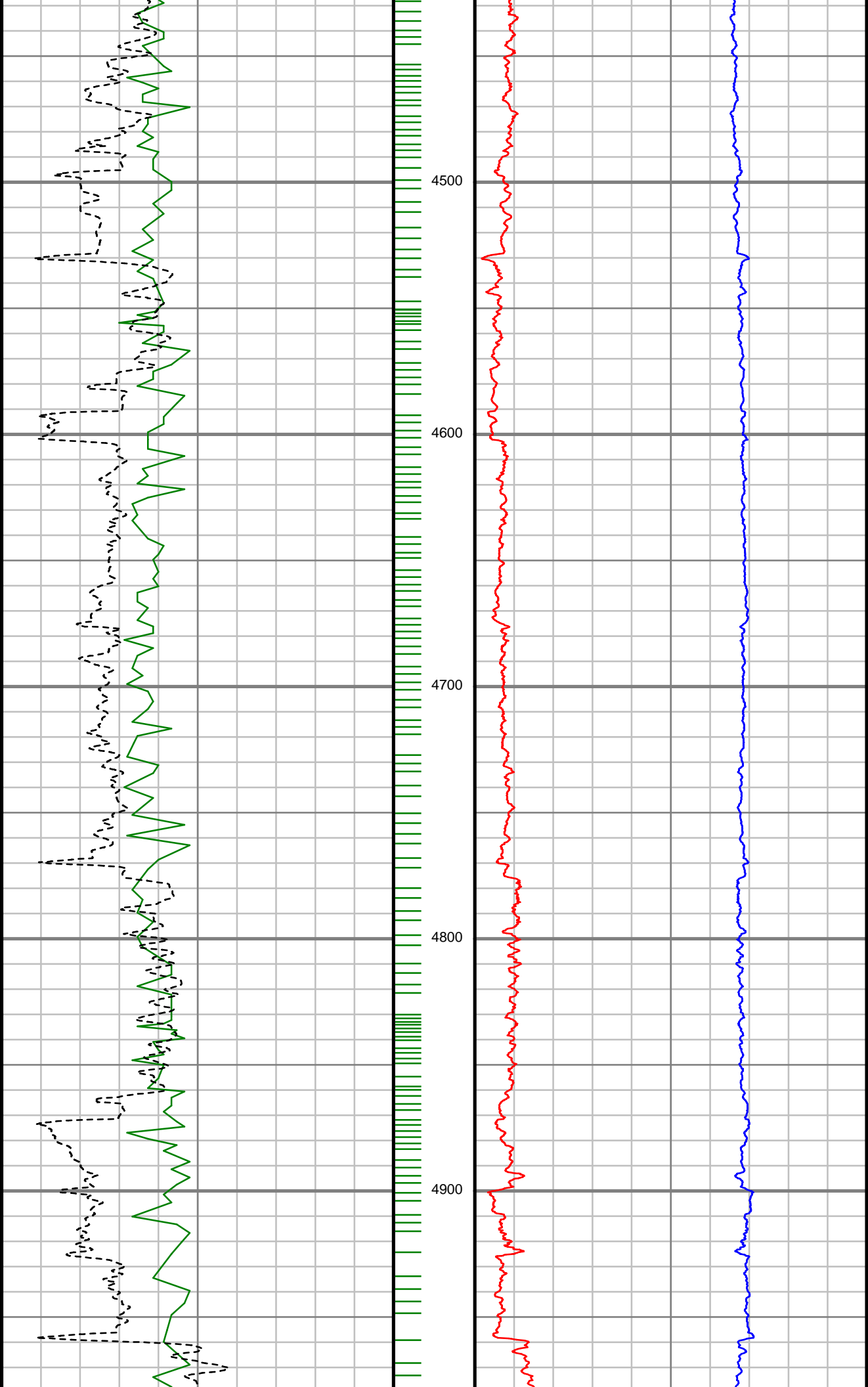


S: 35 MD: 4050.00 ft Inc:
5.28 deg Az: 317.80 deg
TVD: 4037.48 ft

S: 36 MD: 4144.00 ft Inc:
5.10 deg Az: 314.99 deg
TVD: 4131.09 ft

S: 37 MD: 4237.00 ft Inc:
4.84 deg Az: 312.88 deg
TVD: 4223.74 ft

S: 38 MD: 4332.00 ft Inc:
4.84 deg Az: 318.77 deg
TVD: 4318.40 ft



S: 39 MD: 4427.00 ft Inc:
4.57 deg Az: 317.36 deg
TVD: 4413.08 ft

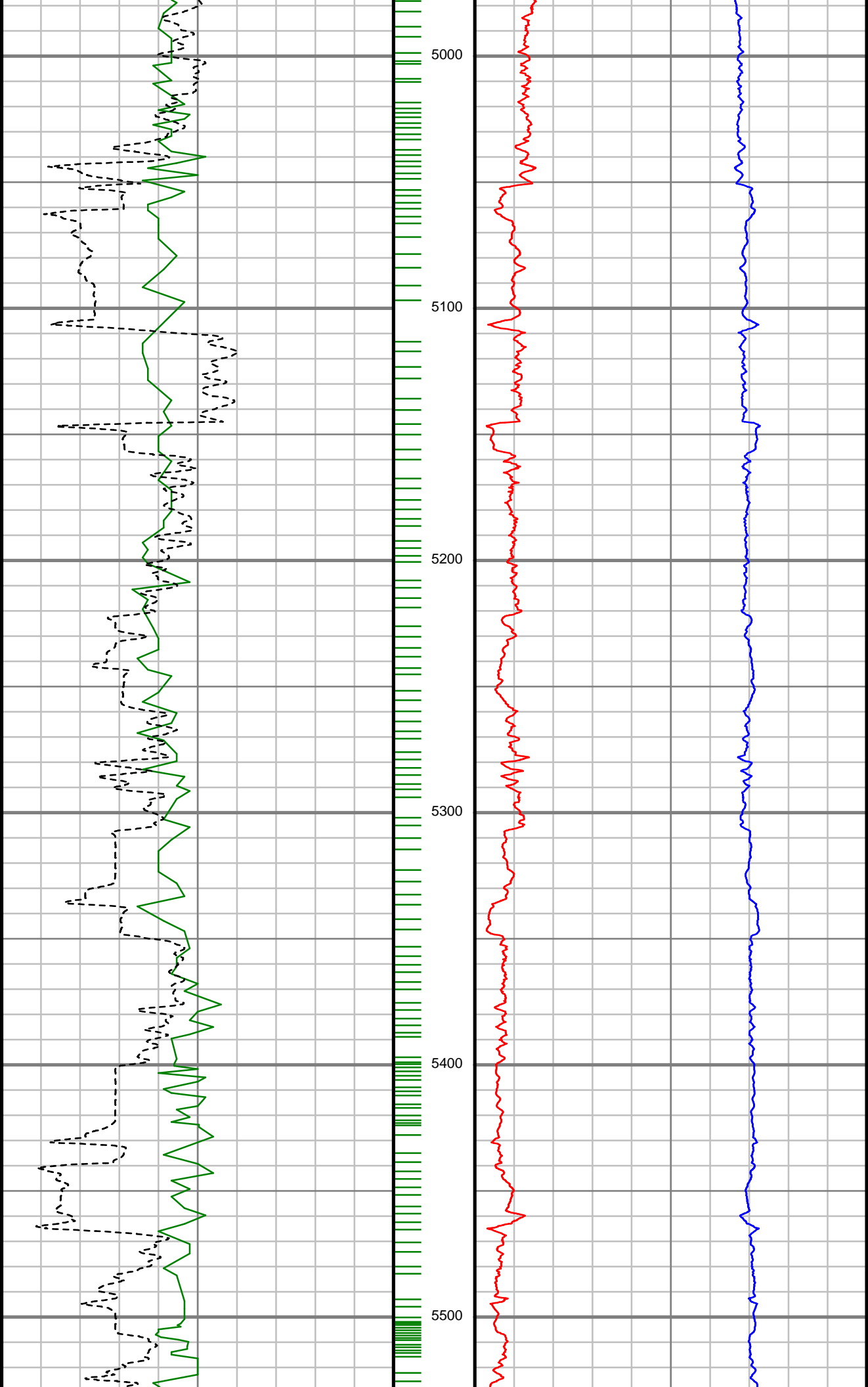
S: 40 MD: 4521.00 ft Inc:
5.10 deg Az: 310.86 deg
TVD: 4506.75 ft

S: 41 MD: 4615.00 ft Inc:
5.19 deg Az: 316.83 deg
TVD: 4600.37 ft

S: 42 MD: 4710.00 ft Inc:
4.84 deg Az: 315.08 deg
TVD: 4695.01 ft

S: 43 MD: 4803.00 ft Inc:
4.22 deg Az: 311.30 deg
TVD: 4787.72 ft

S: 44 MD: 4898.00 ft Inc:
4.48 deg Az: 317.98 deg
TVD: 4882.44 ft



S: 45 MD: 4992.00 ft Inc:
3.25 deg Az: 315.16 deg
TVD: 4976.23 ft

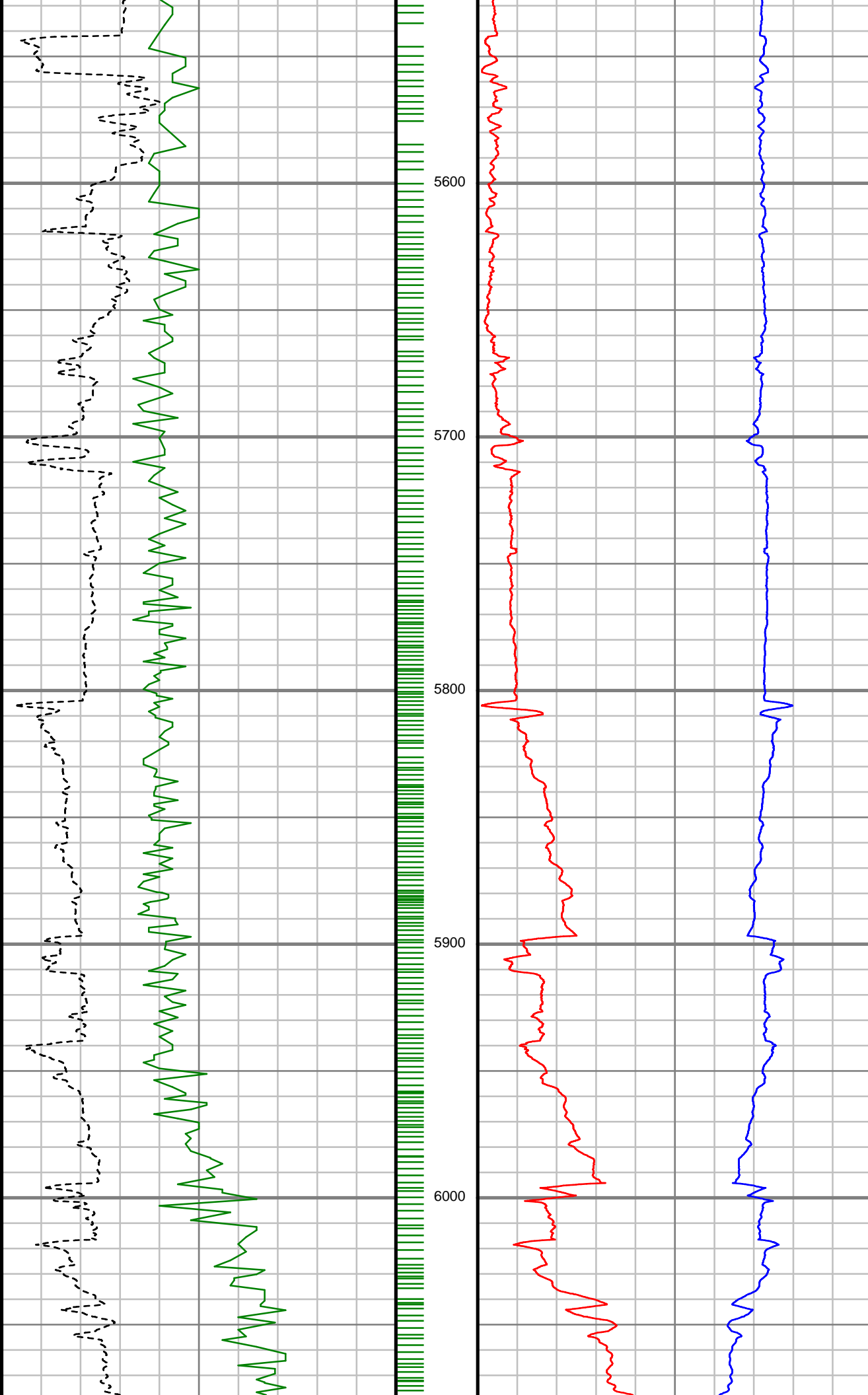
S: 46 MD: 5086.00 ft Inc:
4.22 deg Az: 320.09 deg
TVD: 5070.03 ft

S: 47 MD: 5181.00 ft Inc:
4.48 deg Az: 321.76 deg
TVD: 5164.75 ft

S: 48 MD: 5275.00 ft Inc:
3.43 deg Az: 328.70 deg
TVD: 5258.53 ft

S: 49 MD: 5370.00 ft Inc:
2.64 deg Az: 325.36 deg
TVD: 5353.39 ft

S: 50 MD: 5464.00 ft Inc:
1.41 deg Az: 306.29 deg
TVD: 5447.33 ft



S: 51 MD: 5558.00 ft Inc:
0.62 deg Az: 284.14 deg
TVD: 5541.32 ft

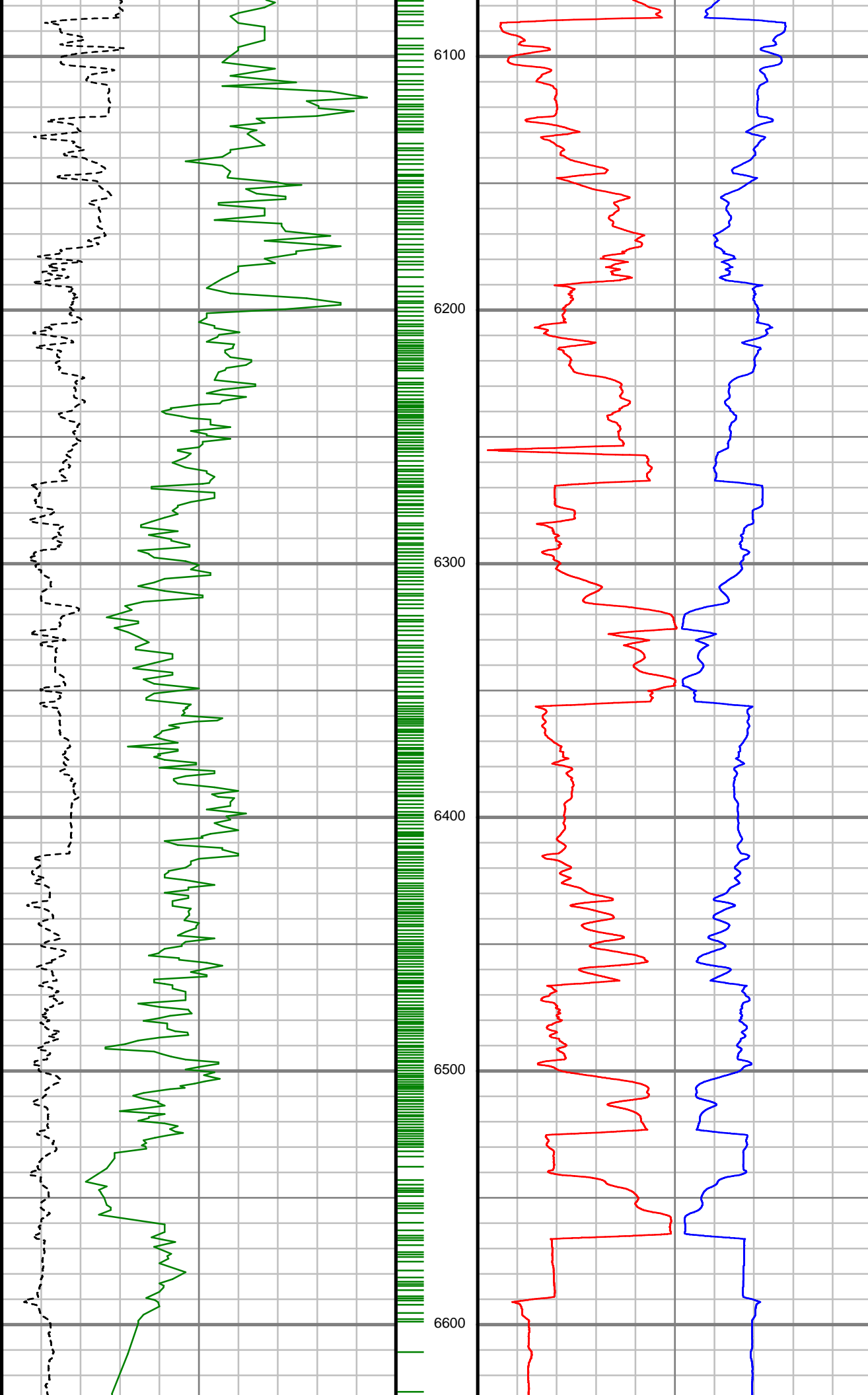
S: 52 MD: 5652.00 ft Inc:
0.18 deg Az: 277.28 deg
TVD: 5635.32 ft

S: 53 MD: 5746.00 ft Inc:
0.26 deg Az: 122.16 deg
TVD: 5729.32 ft

S: 54 MD: 5841.00 ft Inc:
5.36 deg Az: 79.09 deg
TVD: 5824.17 ft

S: 55 MD: 5935.00 ft Inc:
16.27 deg Az: 81.73 deg
TVD: 5916.36 ft

S: 56 MD: 6030.00 ft Inc:
27.17 deg Az: 88.85 deg
TVD: 6004.50 ft



S: 57 MD: 6124.00 ft Inc:
37.99 deg Az: 88.85 deg
TVD: 6083.59 ft

S: 58 MD: 6218.00 ft Inc:
50.12 deg Az: 85.86 deg
TVD: 6151.03 ft

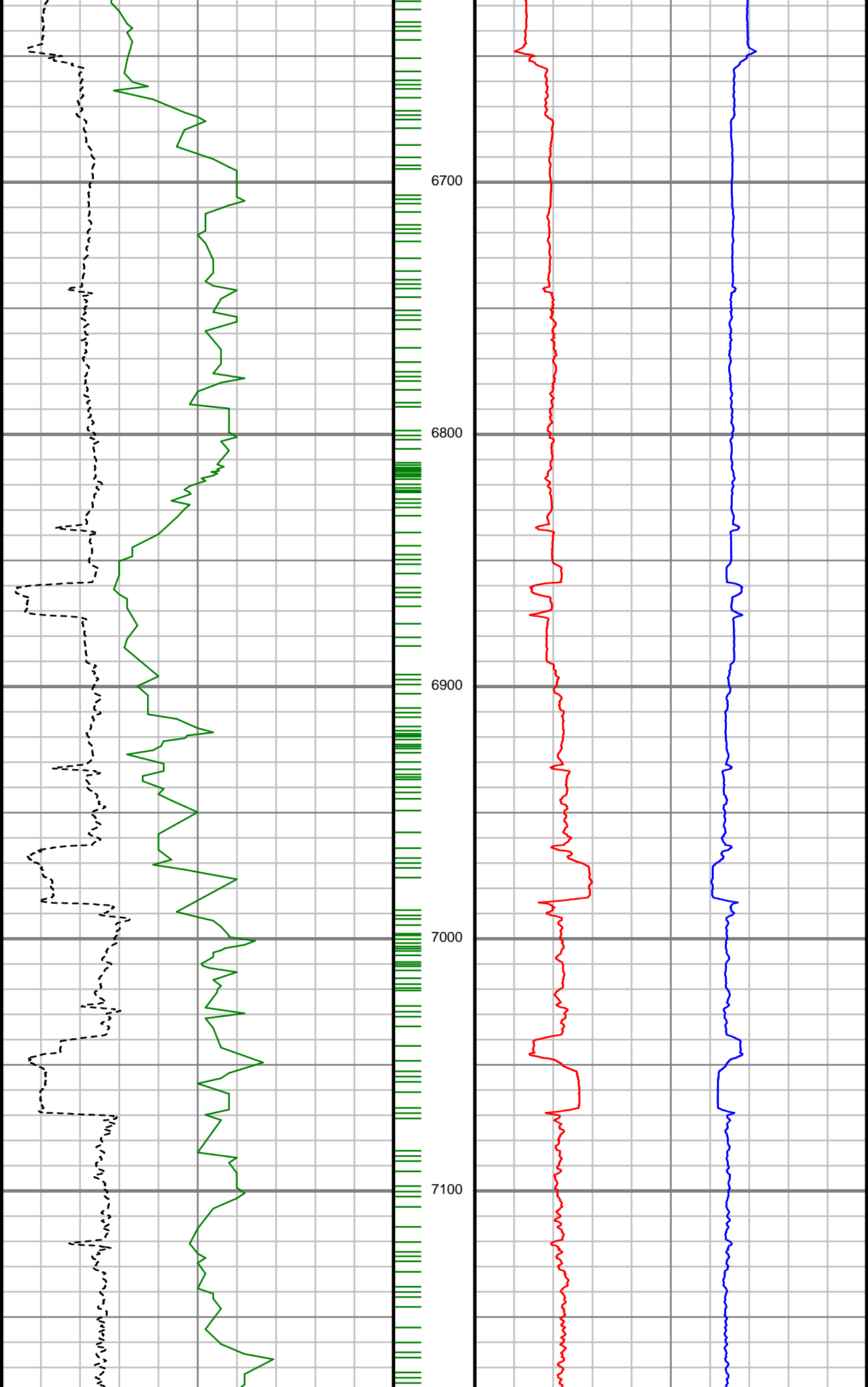
S: 59 MD: 6312.00 ft Inc:
60.23 deg Az: 90.43 deg
TVD: 6204.65 ft

S: 60 MD: 6406.00 ft Inc:
68.32 deg Az: 89.72 deg
TVD: 6245.42 ft

S: 61 MD: 6501.00 ft Inc:
80.64 deg Az: 88.67 deg
TVD: 6270.79 ft

S: 62 MD: 6526.00 ft Inc:
84.24 deg Az: 88.85 deg
TVD: 6274.08 ft

S: 63 MD: 6591.00 ft Inc:
89.08 deg Az: 91.39 deg
TVD: 6277.87 ft



S: 64 MD: 6684.00 ft Inc:
89.52 deg Az: 90.25 deg
TVD: 6279.01 ft

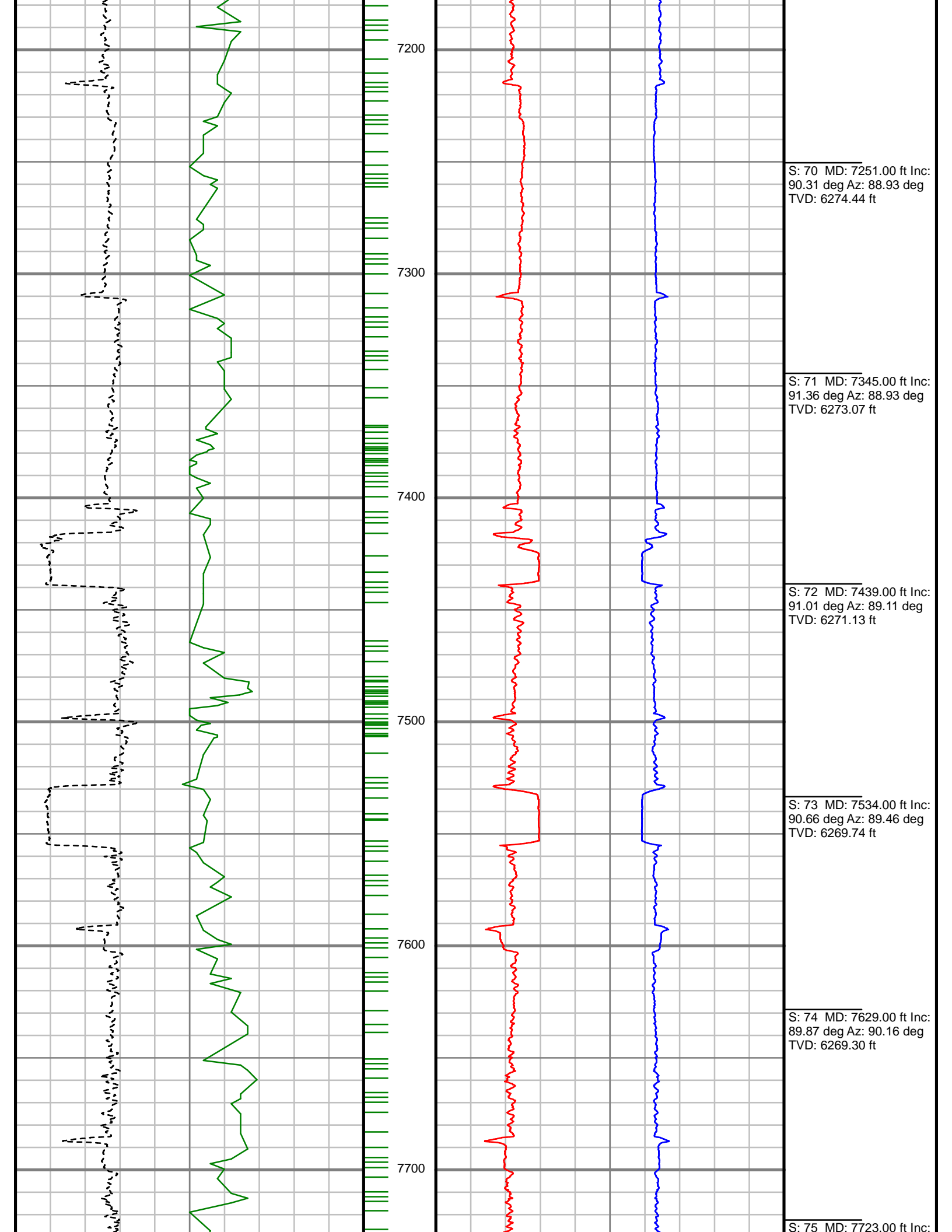
S: 65 MD: 6779.00 ft Inc:
91.28 deg Az: 90.25 deg
TVD: 6278.35 ft

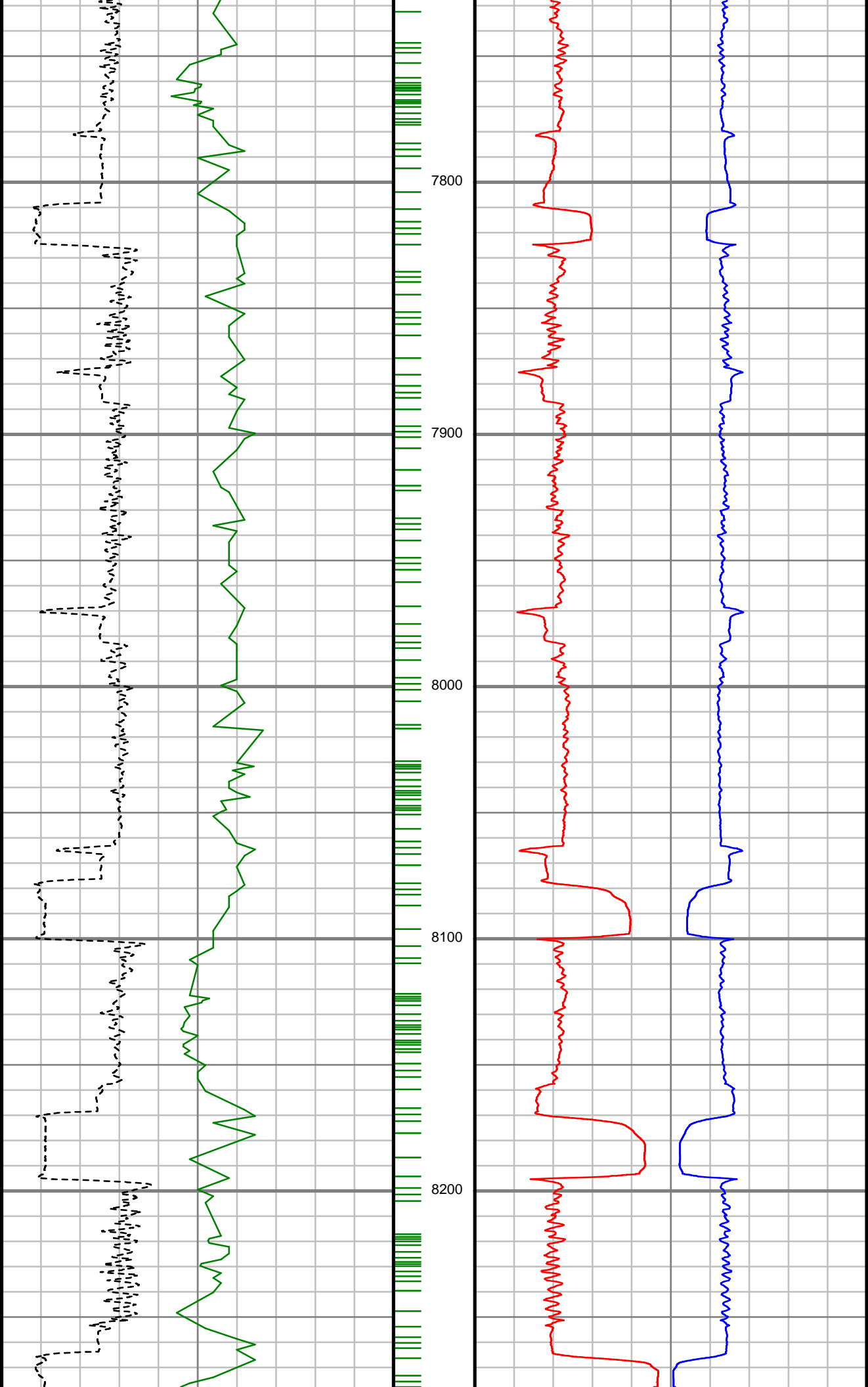
S: 66 MD: 6874.00 ft Inc:
90.66 deg Az: 90.34 deg
TVD: 6276.75 ft

S: 67 MD: 6968.00 ft Inc:
91.45 deg Az: 90.52 deg
TVD: 6275.02 ft

S: 68 MD: 7062.00 ft Inc:
89.60 deg Az: 90.08 deg
TVD: 6274.15 ft

S: 69 MD: 7157.00 ft Inc:
89.87 deg Az: 89.55 deg
TVD: 6274.59 ft





90.92 deg Az: 88.85 deg
TVD: 6268.65 ft

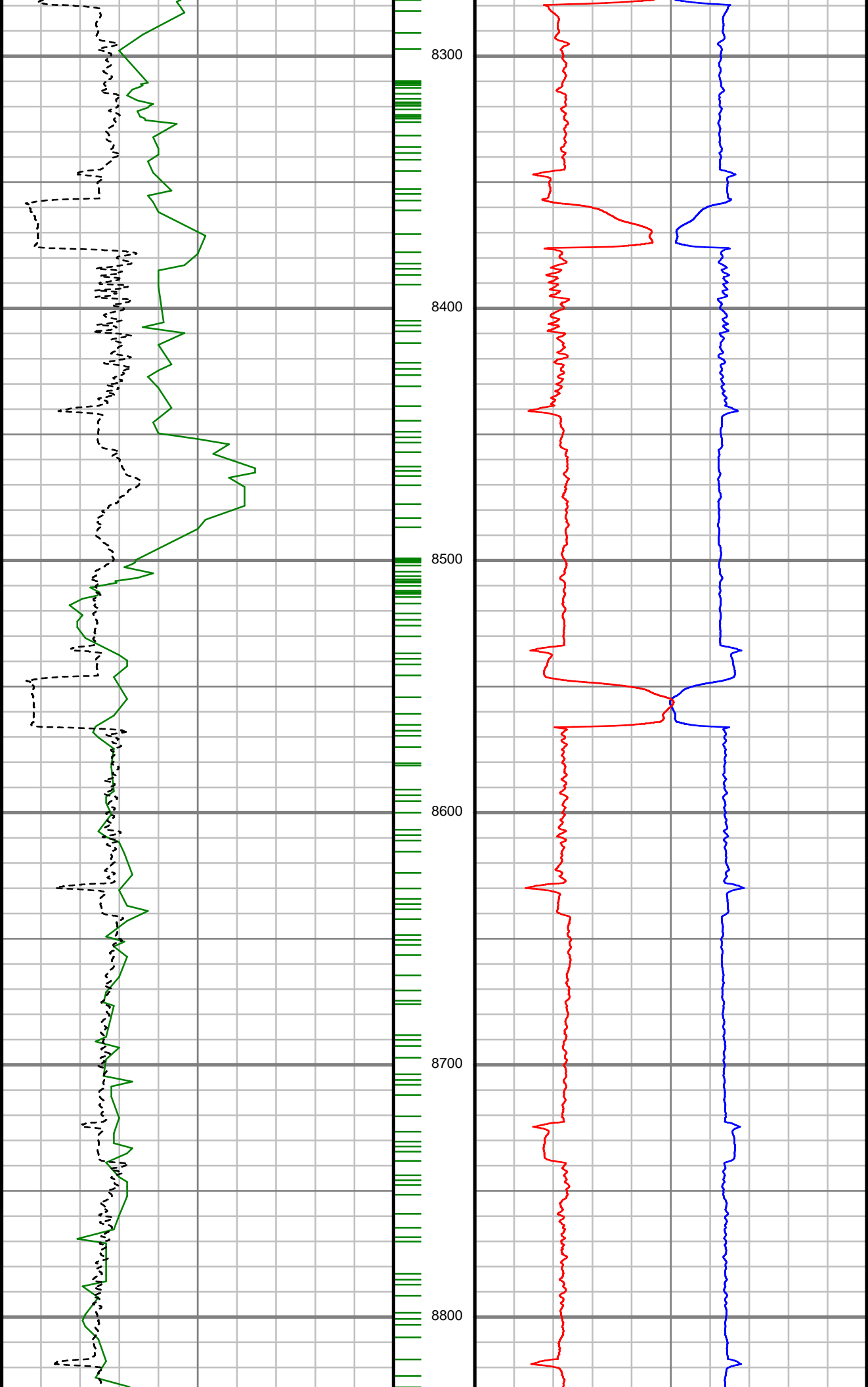
S: 76 MD: 7817.00 ft Inc:
90.66 deg Az: 88.93 deg
TVD: 6267.36 ft

S: 77 MD: 7911.00 ft Inc:
90.31 deg Az: 91.04 deg
TVD: 6266.56 ft

S: 78 MD: 8006.00 ft Inc:
90.04 deg Az: 93.06 deg
TVD: 6266.27 ft

S: 79 MD: 8100.00 ft Inc:
90.84 deg Az: 92.54 deg
TVD: 6265.55 ft

S: 80 MD: 8194.00 ft Inc:
89.78 deg Az: 88.41 deg
TVD: 6265.04 ft



S: 81 MD: 8288.00 ft Inc:
91.80 deg Az: 88.41 deg
TVD: 6263.75 ft

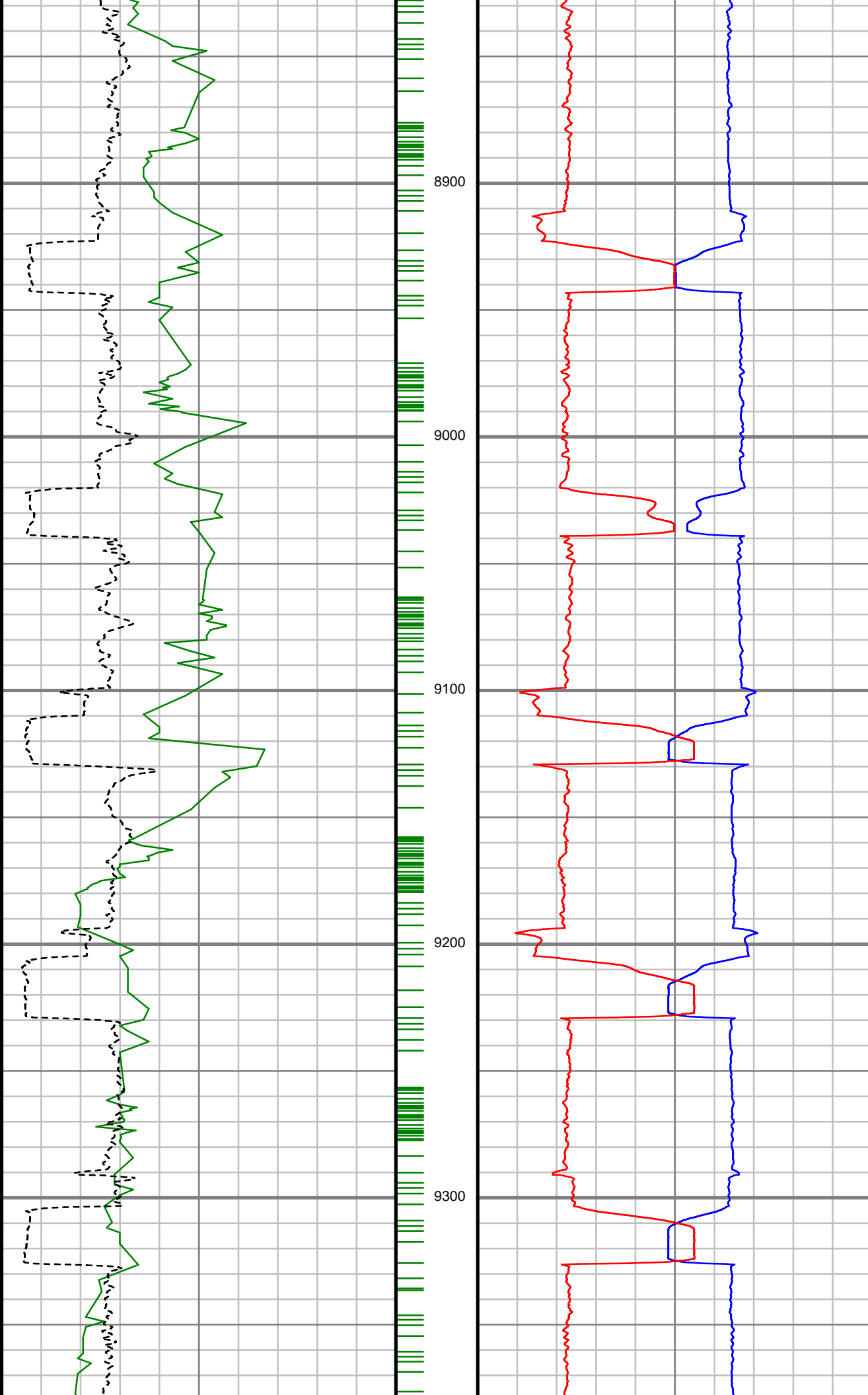
S: 82 MD: 8382.00 ft Inc:
91.19 deg Az: 88.85 deg
TVD: 6261.29 ft

S: 83 MD: 8477.00 ft Inc:
91.80 deg Az: 88.58 deg
TVD: 6258.82 ft

S: 84 MD: 8571.00 ft Inc:
90.13 deg Az: 88.93 deg
TVD: 6257.23 ft

S: 85 MD: 8665.00 ft Inc:
89.78 deg Az: 87.62 deg
TVD: 6257.30 ft

S: 86 MD: 8760.00 ft Inc:
90.66 deg Az: 87.88 deg
TVD: 6256.94 ft



S: 87 MD: 8854.00 ft Inc:
91.71 deg Az: 87.62 deg
TVD: 6254.99 ft

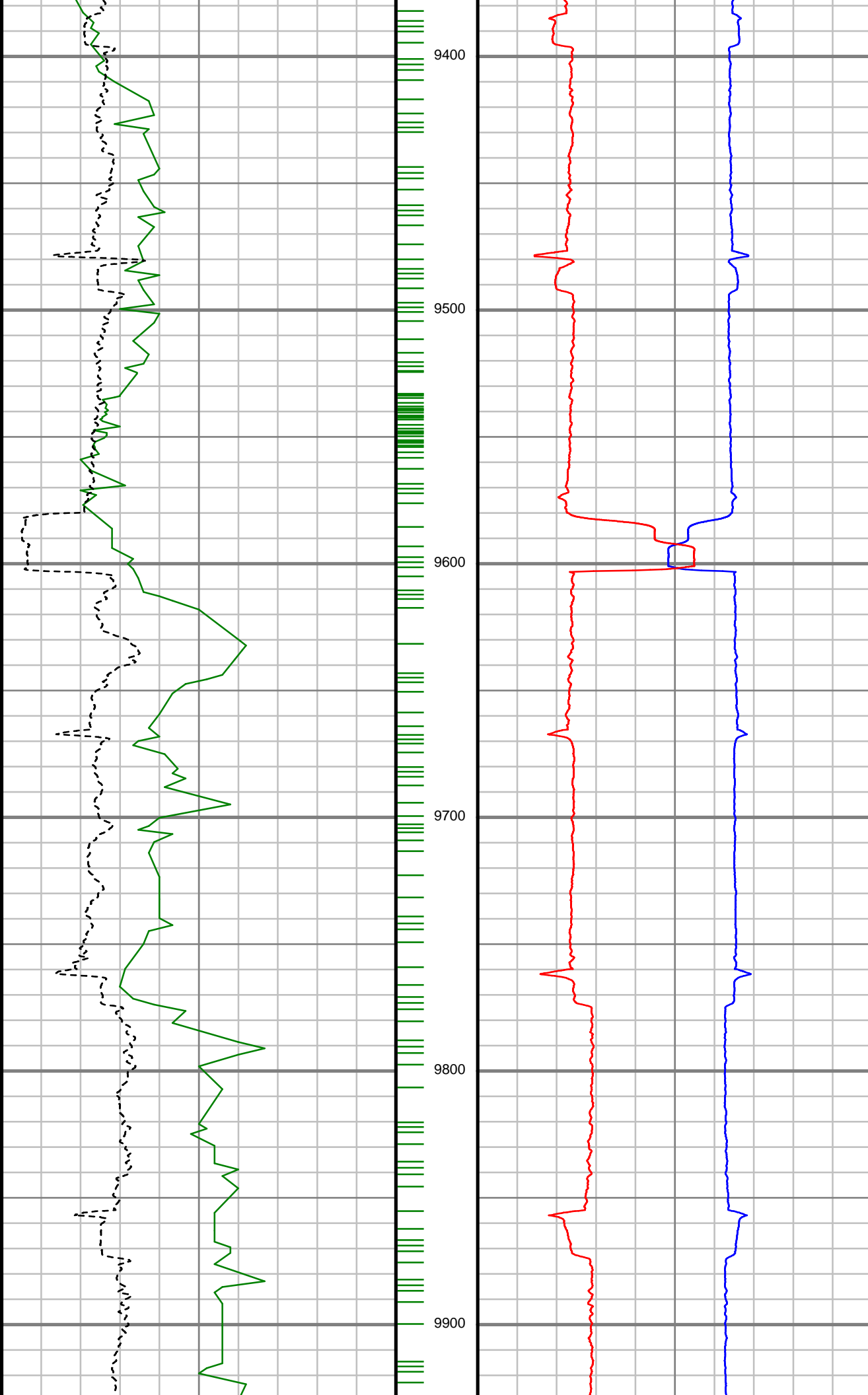
S: 88 MD: 8948.00 ft Inc:
91.28 deg Az: 88.67 deg
TVD: 6252.54 ft

S: 89 MD: 9042.00 ft Inc:
90.66 deg Az: 88.41 deg
TVD: 6250.95 ft

S: 90 MD: 9137.00 ft Inc:
91.36 deg Az: 89.37 deg
TVD: 6249.27 ft

S: 91 MD: 9232.00 ft Inc:
90.22 deg Az: 89.11 deg
TVD: 6247.96 ft

S: 92 MD: 9325.00 ft Inc:
89.43 deg Az: 90.25 deg
TVD: 6248.25 ft



S: 93 MD: 9420.00 ft Inc:
89.69 deg Az: 90.08 deg
TVD: 6248.98 ft

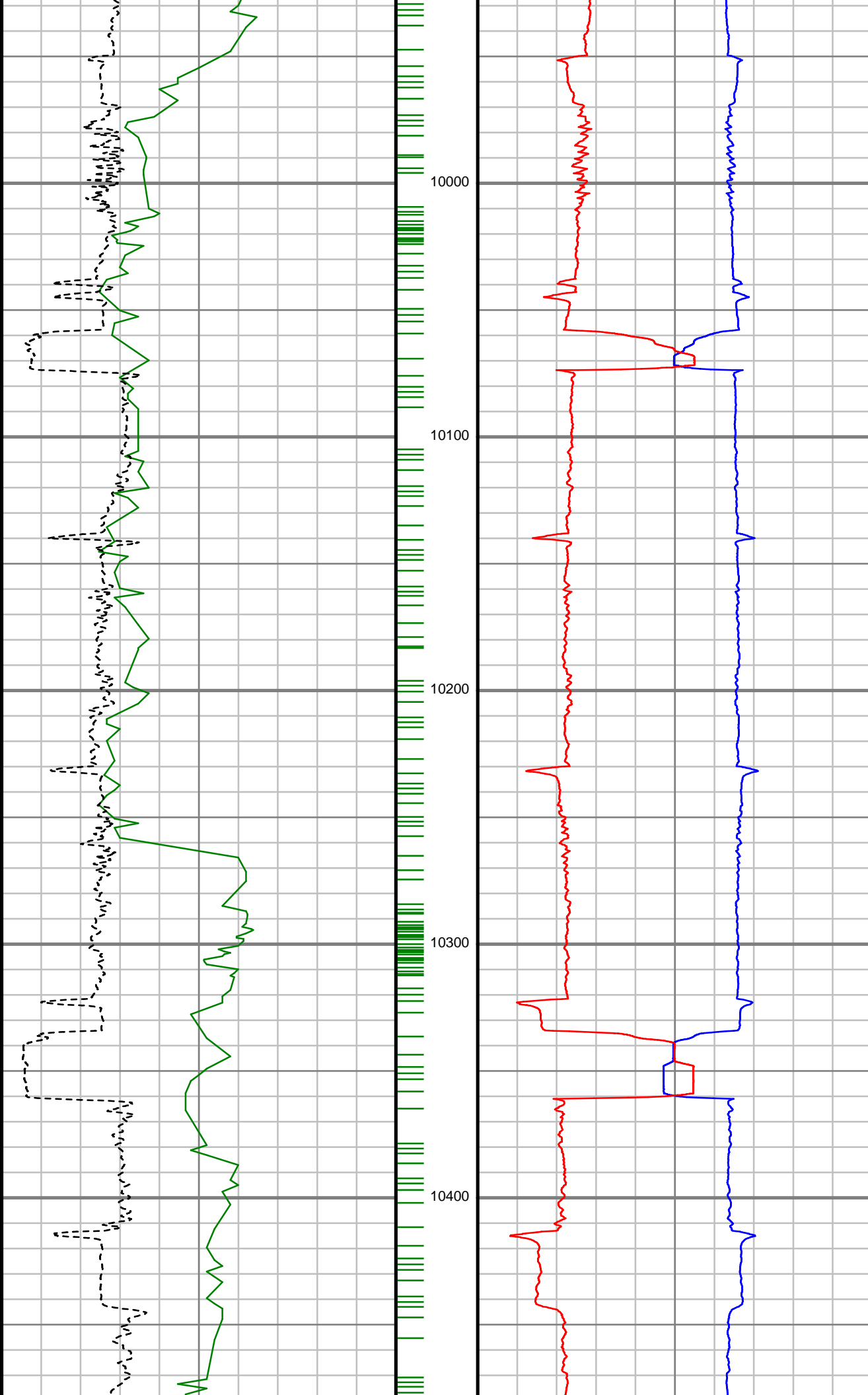
S: 94 MD: 9514.00 ft Inc:
90.84 deg Az: 90.34 deg
TVD: 6248.54 ft

S: 95 MD: 9609.00 ft Inc:
88.55 deg Az: 89.99 deg
TVD: 6249.05 ft

S: 96 MD: 9703.00 ft Inc:
88.81 deg Az: 89.72 deg
TVD: 6251.22 ft

S: 97 MD: 9798.00 ft Inc:
88.99 deg Az: 90.08 deg
TVD: 6253.04 ft

S: 98 MD: 9892.00 ft Inc:
89.34 deg Az: 89.64 deg
TVD: 6254.41 ft



S: 99 MD: 9987.00 ft Inc:
89.52 deg Az: 88.85 deg
TVD: 6255.36 ft

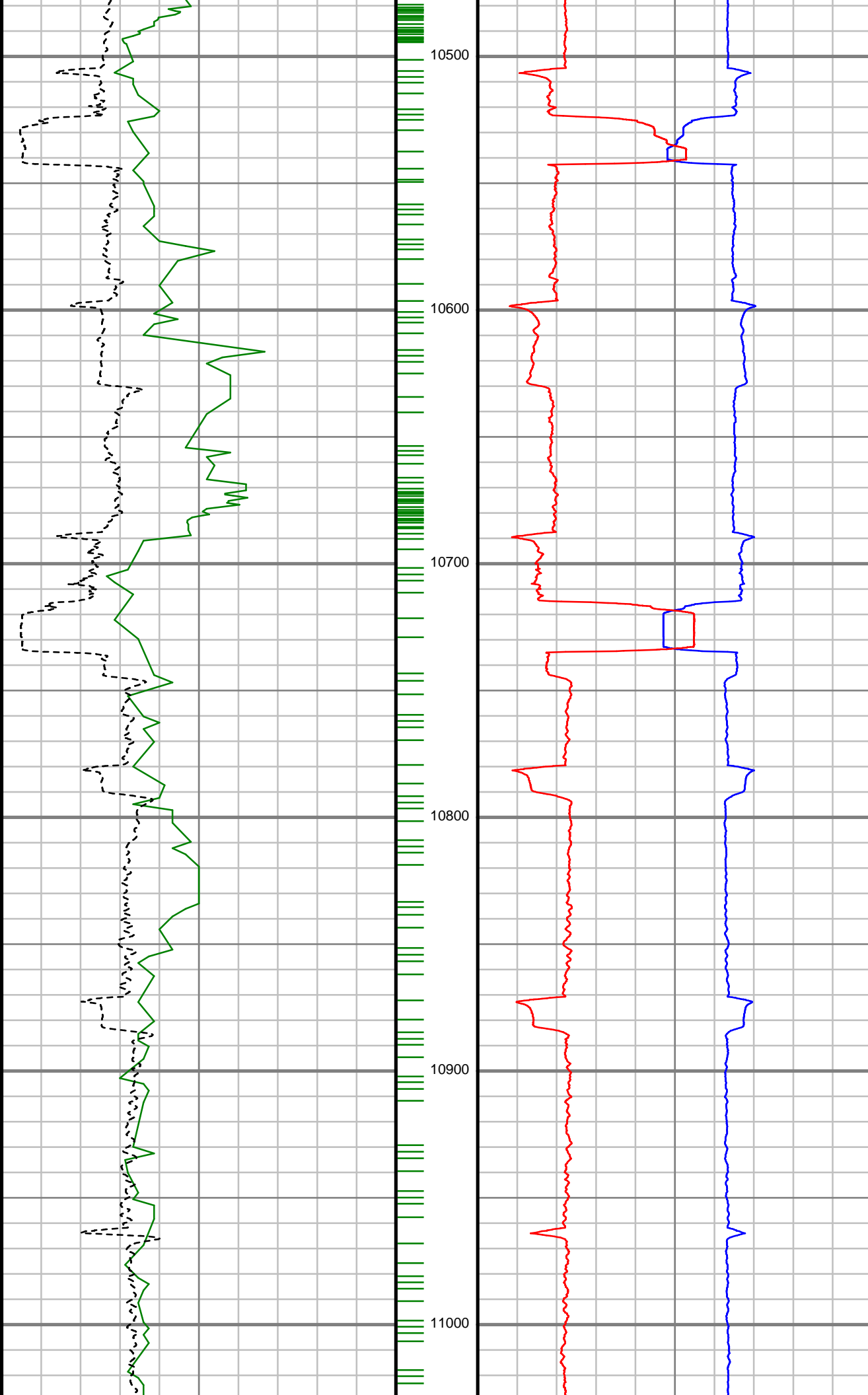
S: 100 MD: 10081.00 ft
Inc: 90.92 deg Az: 89.46
deg TVD: 6255.00 ft

S: 101 MD: 10173.00 ft
Inc: 91.10 deg Az: 89.55
deg TVD: 6253.37 ft

S: 102 MD: 10265.00 ft
Inc: 92.86 deg Az: 89.99
deg TVD: 6250.20 ft

S: 103 MD: 10356.00 ft
Inc: 90.40 deg Az: 89.29
deg TVD: 6247.61 ft

S: 104 MD: 10448.00 ft
Inc: 91.54 deg Az: 88.67
deg TVD: 6246.06 ft



S: 105 MD: 10539.00 ft
Inc: 90.40 deg Az: 89.37
deg TVD: 6244.52 ft

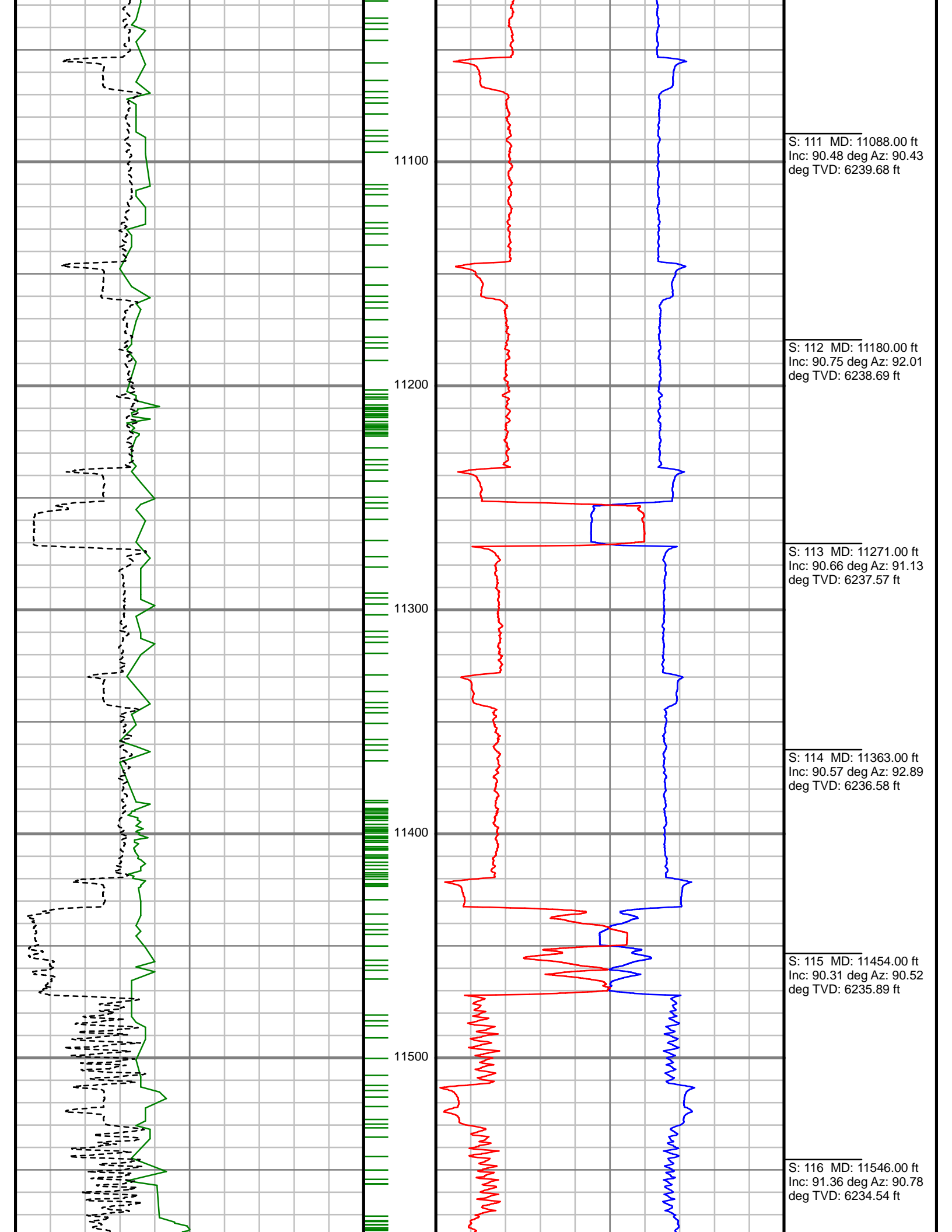
S: 106 MD: 10631.00 ft
Inc: 90.84 deg Az: 88.93
deg TVD: 6243.54 ft

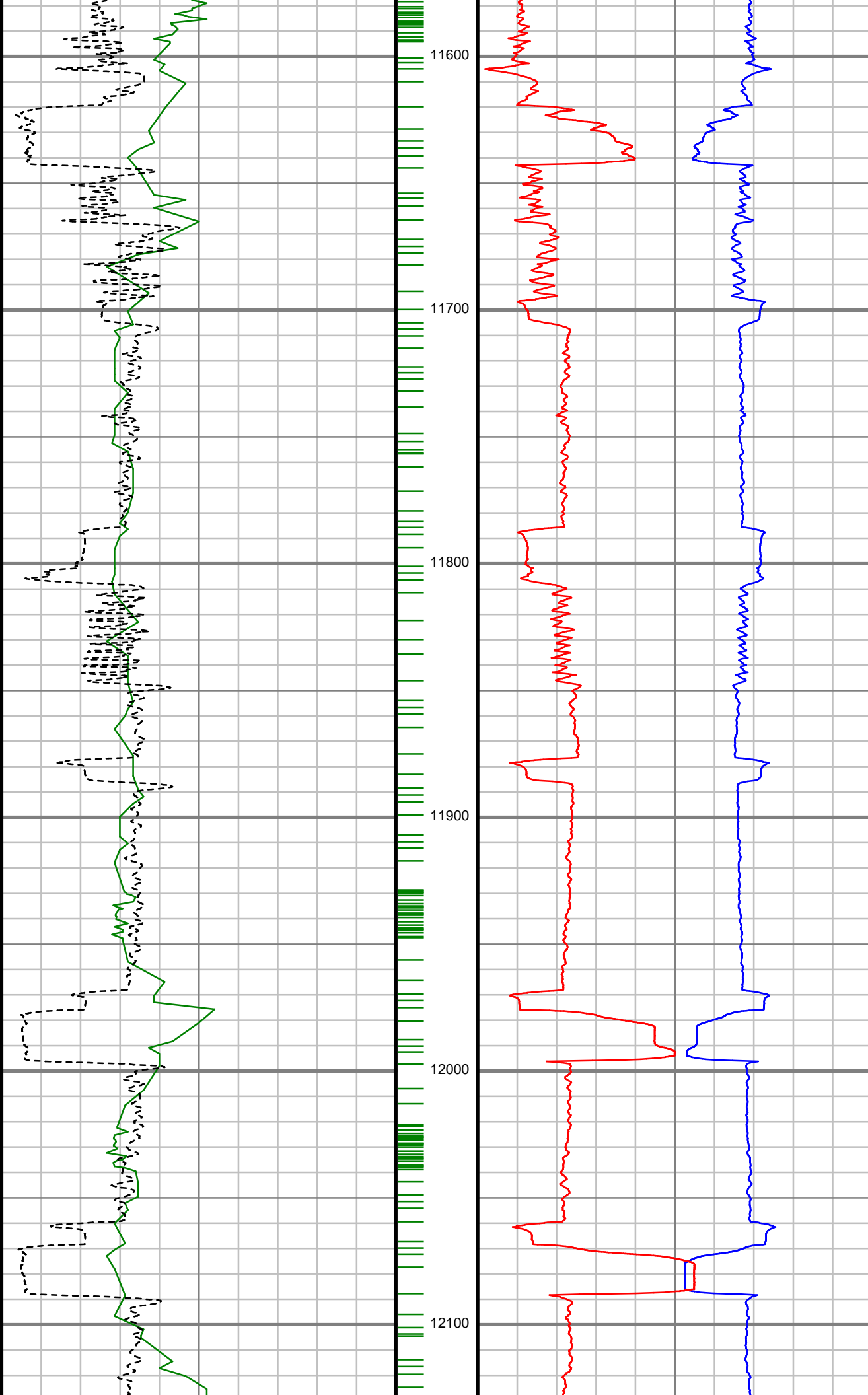
S: 107 MD: 10722.00 ft
Inc: 90.22 deg Az: 89.20
deg TVD: 6242.70 ft

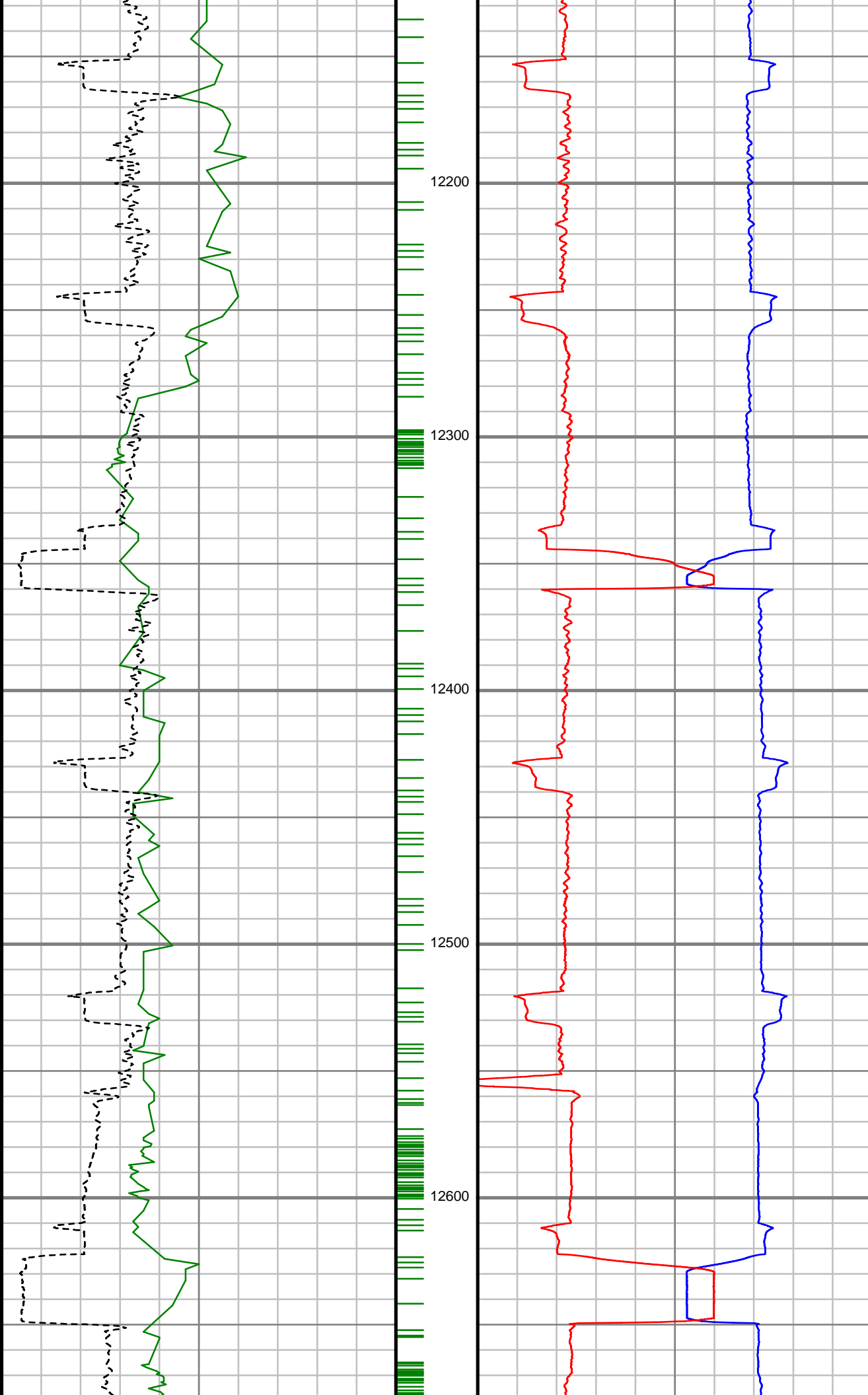
S: 108 MD: 10814.00 ft
Inc: 90.66 deg Az: 88.67
deg TVD: 6241.99 ft

S: 109 MD: 10905.00 ft
Inc: 90.22 deg Az: 87.97
deg TVD: 6241.29 ft

S: 110 MD: 10996.00 ft
Inc: 90.66 deg Az: 88.85
deg TVD: 6240.60 ft







S: 123 MD: 12186.00 ft
Inc: 90.48 deg Az: 87.88
deg TVD: 6228.72 ft

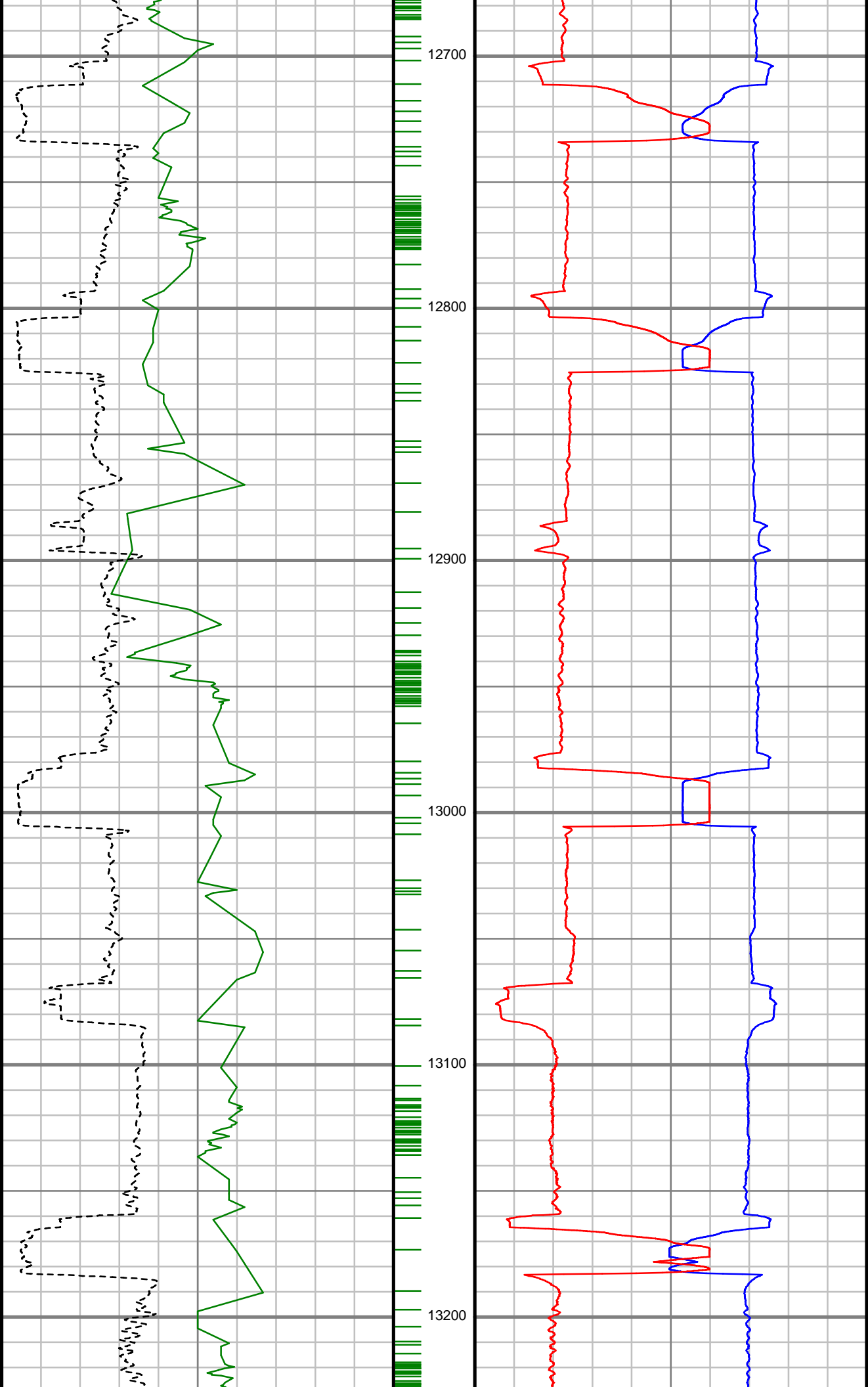
S: 124 MD: 12278.00 ft
Inc: 91.19 deg Az: 88.76
deg TVD: 6227.38 ft

S: 125 MD: 12370.00 ft
Inc: 90.57 deg Az: 89.55
deg TVD: 6225.97 ft

S: 126 MD: 12462.00 ft
Inc: 90.22 deg Az: 91.13
deg TVD: 6225.33 ft

S: 127 MD: 12553.00 ft
Inc: 90.48 deg Az: 92.45
deg TVD: 6224.78 ft

S: 128 MD: 12645.00 ft
Inc: 91.63 deg Az: 91.04
deg TVD: 6223.08 ft



S: 129 MD: 12736.00 ft
Inc: 90.04 deg Az: 90.60
deg TVD: 6221.75 ft

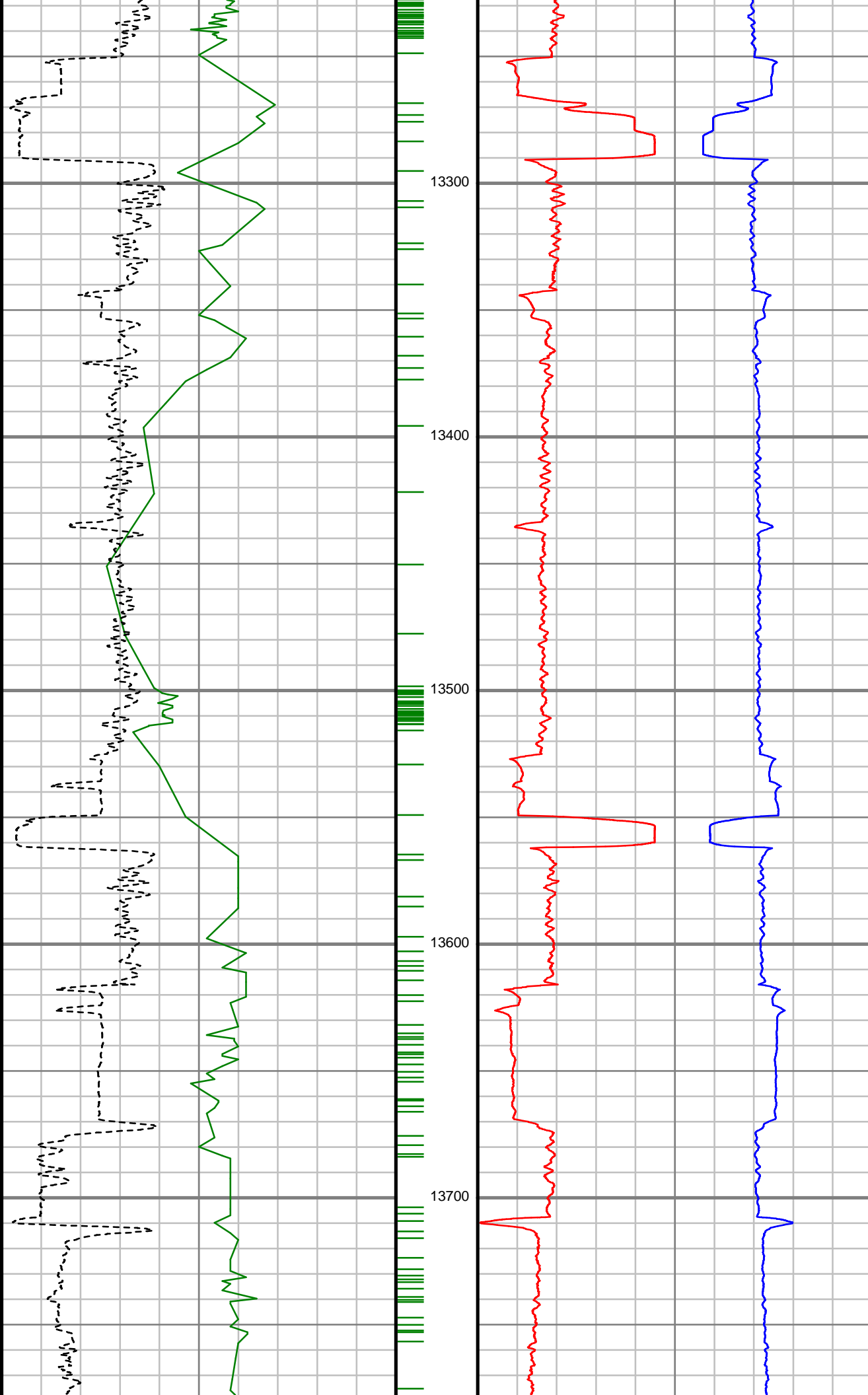
S: 130 MD: 12828.00 ft
Inc: 90.57 deg Az: 88.58
deg TVD: 6221.26 ft

S: 131 MD: 12919.00 ft
Inc: 91.45 deg Az: 88.41
deg TVD: 6219.65 ft

S: 132 MD: 13011.00 ft
Inc: 90.92 deg Az: 88.05
deg TVD: 6217.75 ft

S: 133 MD: 13102.00 ft
Inc: 91.10 deg Az: 88.14
deg TVD: 6216.14 ft

S: 134 MD: 13193.00 ft
Inc: 91.28 deg Az: 89.02
deg TVD: 6214.26 ft



S: 135 MD: 13285.00 ft
Inc: 89.25 deg Az: 89.81
deg TVD: 6213.83 ft

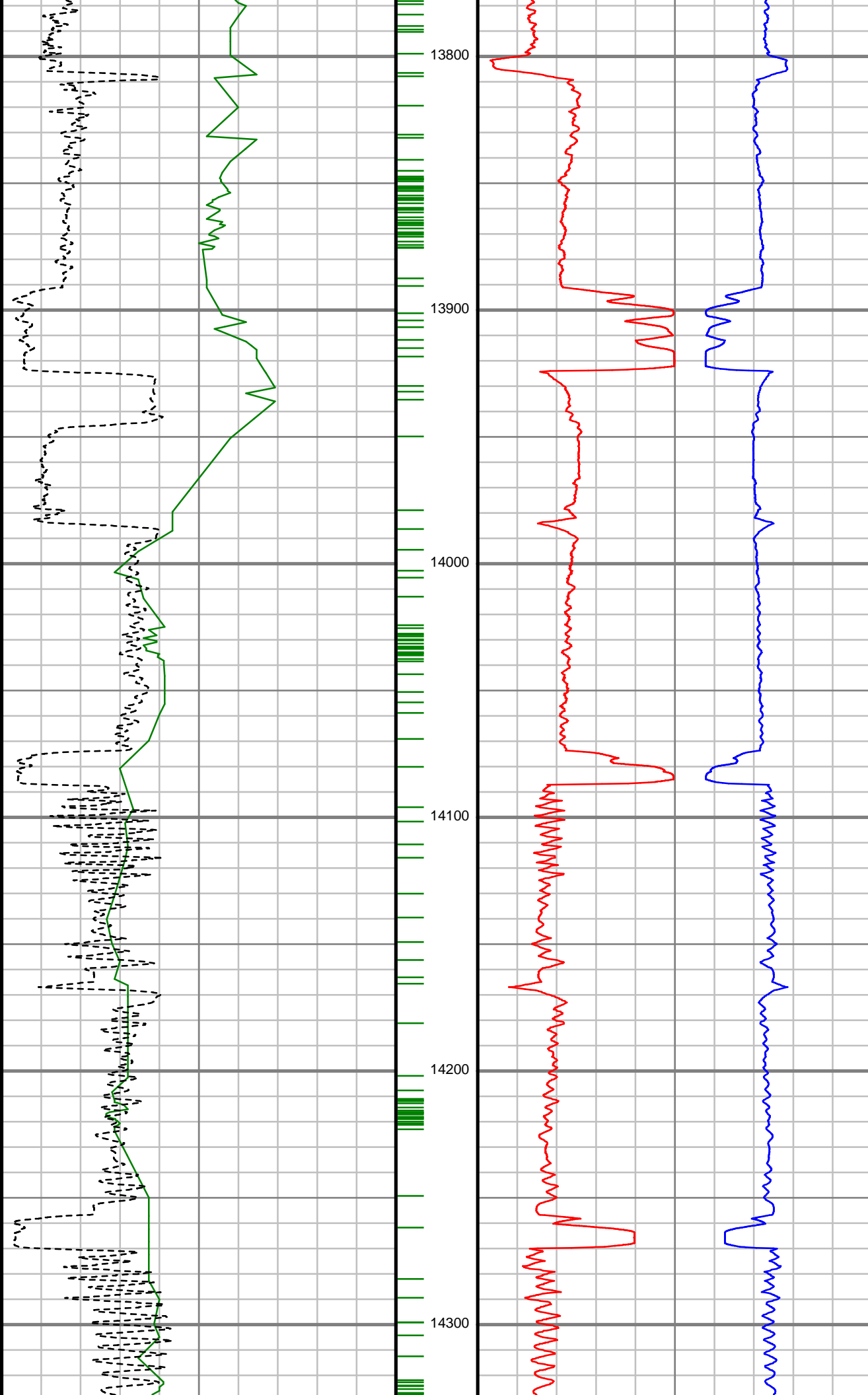
S: 136 MD: 13376.00 ft
Inc: 89.34 deg Az: 89.02
deg TVD: 6214.95 ft

S: 137 MD: 13468.00 ft
Inc: 89.34 deg Az: 88.93
deg TVD: 6216.01 ft

S: 138 MD: 13559.00 ft
Inc: 90.66 deg Az: 88.58
deg TVD: 6216.01 ft

S: 139 MD: 13651.00 ft
Inc: 90.40 deg Az: 87.97
deg TVD: 6215.16 ft

S: 140 MD: 13743.00 ft
Inc: 90.84 deg Az: 87.18
deg TVD: 6214.17 ft



S: 141 MD: 13834.00 ft
Inc: 90.13 deg Az: 85.33
deg TVD: 6213.41 ft

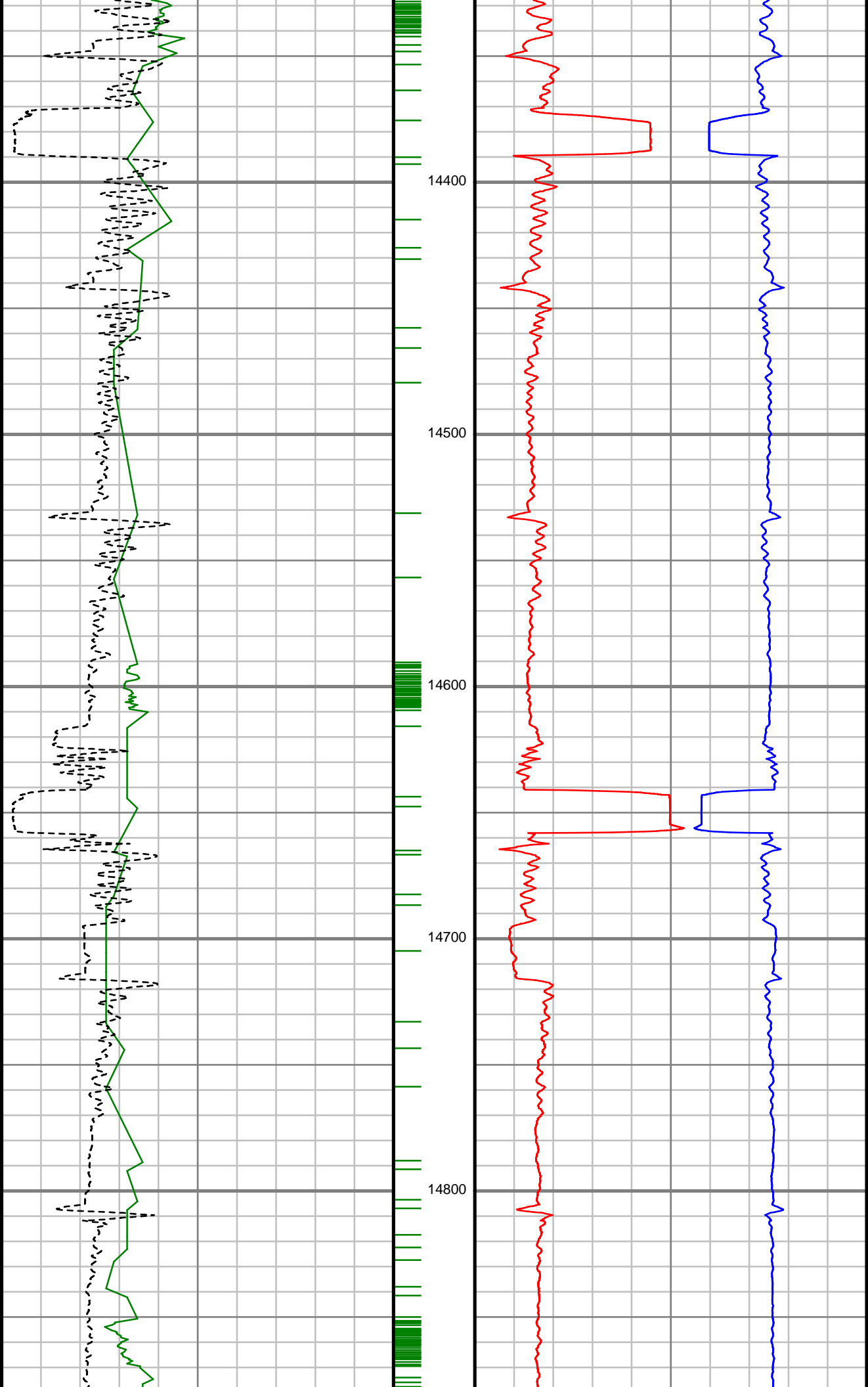
S: 142 MD: 13925.00 ft
Inc: 91.36 deg Az: 88.67
deg TVD: 6212.22 ft

S: 143 MD: 14017.00 ft
Inc: 91.71 deg Az: 87.97
deg TVD: 6209.75 ft

S: 144 MD: 14108.00 ft
Inc: 91.54 deg Az: 89.46
deg TVD: 6207.16 ft

S: 145 MD: 14200.00 ft
Inc: 90.84 deg Az: 87.88
deg TVD: 6205.26 ft

S: 146 MD: 14291.00 ft
Inc: 90.22 deg Az: 87.70
deg TVD: 6204.42 ft



S: 147 MD: 14383.00 ft
Inc: 90.57 deg Az: 89.72
deg TVD: 6203.78 ft

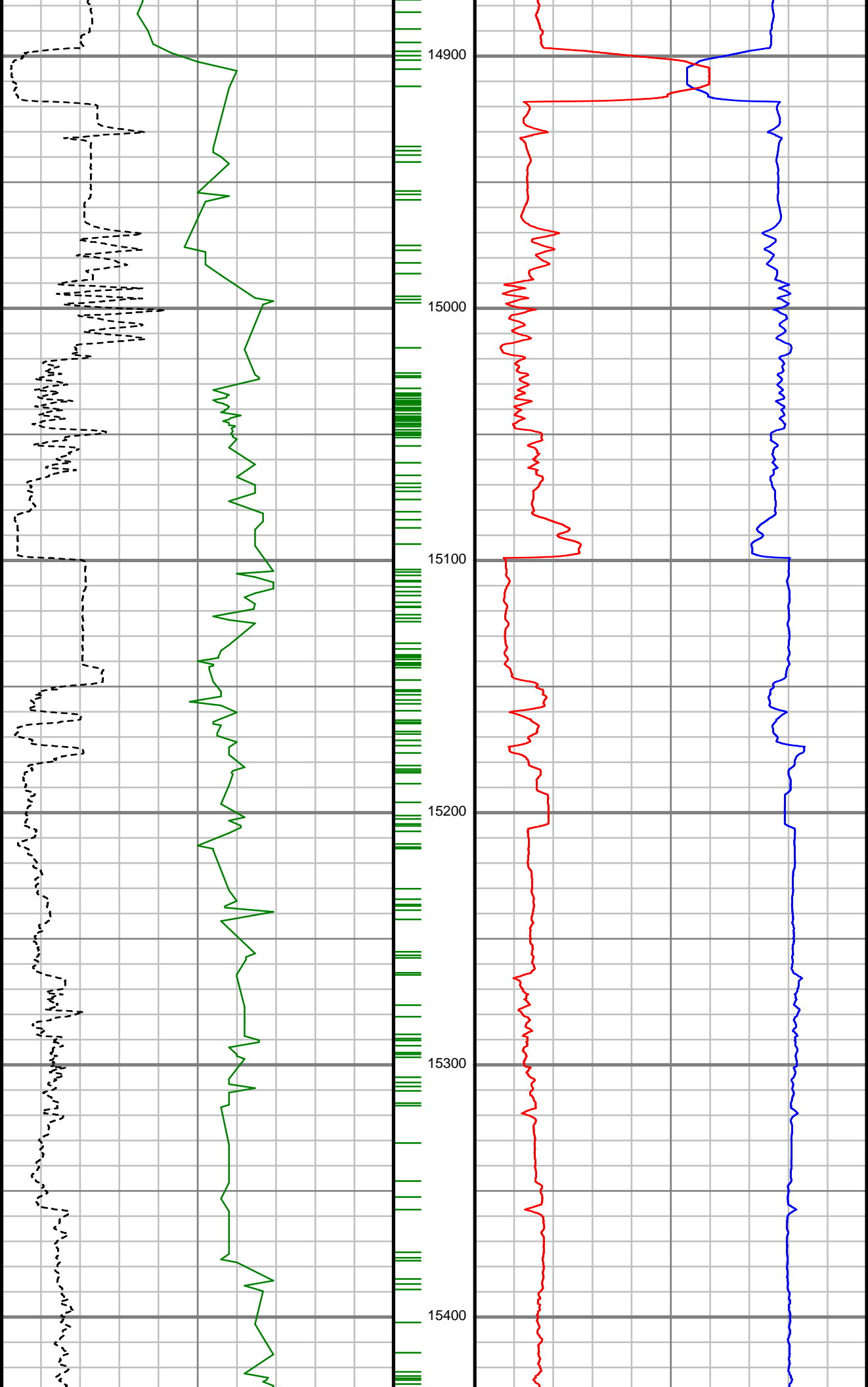
S: 148 MD: 14474.00 ft
Inc: 90.92 deg Az: 89.02
deg TVD: 6202.60 ft

S: 149 MD: 14565.00 ft
Inc: 91.28 deg Az: 89.29
deg TVD: 6200.85 ft

S: 150 MD: 14657.00 ft
Inc: 90.04 deg Az: 89.99
deg TVD: 6199.79 ft

S: 151 MD: 14749.00 ft
Inc: 90.40 deg Az: 89.37
deg TVD: 6199.44 ft

S: 152 MD: 14840.00 ft
Inc: 90.48 deg Az: 88.67
deg TVD: 6198.74 ft



S: 153 MD: 14932.00 ft
Inc: 90.57 deg Az: 91.04
deg TVD: 6197.89 ft

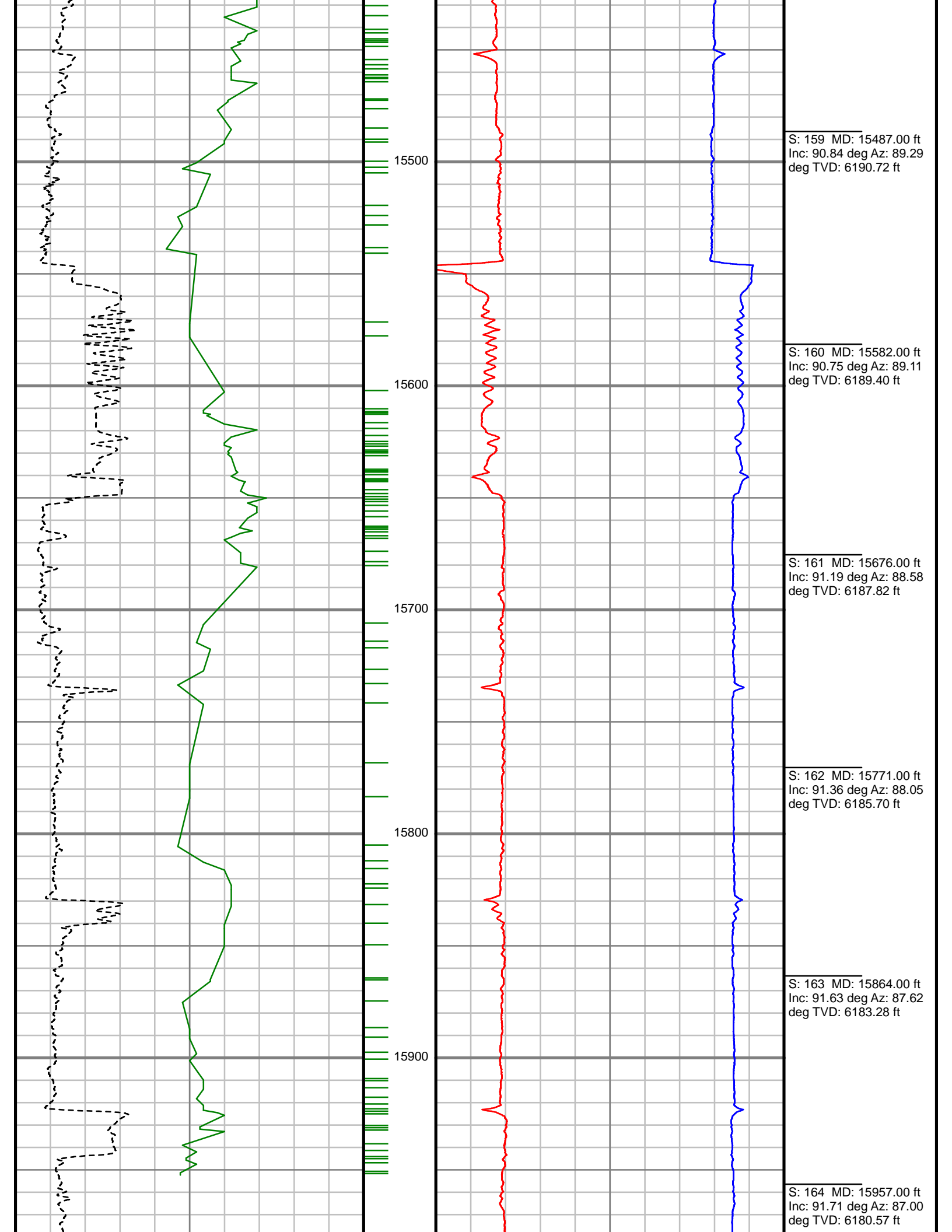
S: 154 MD: 15024.00 ft
Inc: 91.80 deg Az: 90.69
deg TVD: 6195.99 ft

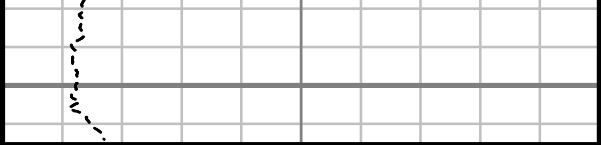
S: 155 MD: 15115.00 ft
Inc: 90.04 deg Az: 90.78
deg TVD: 6194.52 ft

S: 156 MD: 15207.00 ft
Inc: 90.22 deg Az: 90.78
deg TVD: 6194.31 ft

S: 157 MD: 15298.00 ft
Inc: 90.84 deg Az: 90.08
deg TVD: 6193.47 ft

S: 158 MD: 15393.00 ft
Inc: 90.84 deg Az: 90.34
deg TVD: 6192.09 ft





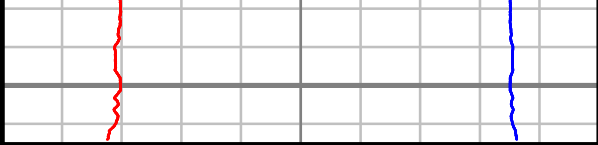
Rate of Penetration (ROP)		

0	Unit = ft/hr	1000
Gamma Ray (GR)		

0	Unit = aapi	150

16000

MEASURED DEPTH
1:600 (ft)



Weight-on-Bit (surf,max) (WOBX)		

0	Unit = kip	100
Hookload (max) (HKLX)		

0	Unit = kip	200

Comments

SURVEY REPORT

ANSCHUTZ EQUUS FARMS 4-62-9-3340C2

ANSCHUTZ STATE FARMS 4-62-9-3340C2

CUSTOMER
PROJECT
FIELD

BILL BARRETT CORPORATION
ANSCHUTZ EQUUS FARMS
4-62-9-3340C2
WATTENBERG

WELL INFORMATION

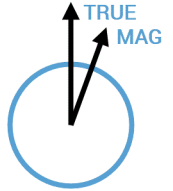
Lat/Long 40° 19' 33.229" N, 104° 20' 18.668" W
Northing 1,363,685.9 ft
Easting 3,323,828.82 ft
UWI 05-123-42406

MAP INFORMATION

North Reference True North
Grid Correction
System US State Plane 1983
Datum North American Datum 1983 (GRS 1980)
Map Zone Colorado North: 0501

VERTICAL SECTION REFERENCE

+N/-S 0 ft
+E/-W 0 ft
Proposal Direction 89.31°
Calculation Method Minimum Curvature



GEOMAGNETIC REFERENCE INFORMATION

Local Gravity: 999.102 mG [computed]

MD	MODEL	DATE	DECLINATION	MAG TO TRUE
800-15957 ft	BGGM2015	17 Jan 2016	8.25°	add 8.25°

WELL NOTES

OPERATORS

C. CHRISTMAN, R. KLASSEN

MD	Inc	Azim	TVD	VS	+N/-S	+E/-W	DLS	Course Length
ft	deg	deg	ft	ft	ft	ft	°/100ft	ft
800.00	0.00	0.00	800.00	0.00	0.00	0.00	Invalid	Invalid
885.00	0.70	188.25	885.00	-0.08	-0.52	-0.07	0.83	85.00
976.00	1.41	269.99	975.99	-1.29	-1.07	-1.27	1.63	91.00
1068.00	2.55	293.37	1067.93	-4.28	-0.26	-4.28	1.50	92.00
1159.00	3.08	312.79	1158.82	-7.90	2.20	-7.93	1.19	91.00
1251.00	4.22	310.07	1250.63	-12.26	6.06	-12.34	1.26	92.00
1342.00	4.22	309.45	1341.39	-17.36	10.35	-17.48	0.05	91.00
1434.00	5.10	309.63	1433.08	-23.06	15.10	-23.25	0.96	92.00
1526.00	4.75	299.96	1524.74	-29.46	19.61	-29.70	0.98	92.00
1618.00	5.72	308.48	1616.36	-36.29	24.37	-36.58	1.35	92.00
1708.00	5.01	308.31	1705.97	-42.82	29.59	-43.18	0.78	90.00
1799.00	4.92	335.20	1796.64	-47.50	35.60	-47.93	2.54	91.00
1891.00	4.31	337.66	1888.34	-50.39	42.39	-50.90	0.70	92.00
1982.00	5.89	332.92	1978.98	-53.73	49.71	-54.33	1.80	91.00
2074.00	5.89	336.08	2070.49	-57.69	58.23	-58.39	0.35	92.00
2166.00	4.84	337.84	2162.09	-60.97	66.13	-61.77	1.16	92.00
2257.00	5.54	323.69	2252.72	-64.93	73.23	-65.82	1.60	91.00
2349.00	4.75	319.38	2344.35	-69.96	79.70	-70.93	0.96	92.00

MD ft	Inc deg	Azim deg	TVD ft	VS ft	+N/-S ft	+E/-W ft	DLS °/100ft	Course Length ft
2444.00	5.80	319.56	2438.94	-75.56	86.34	-76.60	1.11	95.00
2539.00	5.63	327.73	2533.47	-81.07	93.93	-82.21	0.88	95.00
2633.00	5.72	329.31	2627.01	-85.82	101.85	-87.05	0.19	94.00
2727.00	5.98	320.53	2720.52	-91.23	109.66	-92.56	0.99	94.00
2822.00	5.28	317.80	2815.07	-97.22	116.71	-98.64	0.79	95.00
2917.00	4.48	311.65	2909.72	-102.86	122.42	-104.35	1.00	95.00
3012.00	4.75	315.69	3004.41	-108.32	127.70	-109.87	0.44	95.00
3105.00	5.19	316.75	3097.06	-113.82	133.52	-115.44	0.48	93.00
3200.00	5.19	320.53	3191.67	-119.42	139.96	-121.11	0.36	95.00
3294.00	4.92	317.36	3285.31	-124.78	146.21	-126.55	0.41	94.00
3388.00	5.28	317.54	3378.94	-130.35	152.37	-132.20	0.37	94.00
3483.00	5.80	316.31	3473.49	-136.54	159.06	-138.46	0.57	95.00
3577.00	6.07	313.41	3566.99	-143.35	165.91	-145.36	0.42	94.00
3671.00	5.45	313.32	3660.51	-150.13	172.39	-152.21	0.65	94.00
3766.00	6.60	319.21	3754.99	-156.89	179.61	-159.06	1.37	95.00
3861.00	6.07	321.76	3849.41	-163.46	187.69	-165.73	0.63	95.00
3955.00	5.72	318.77	3942.91	-169.53	195.11	-171.89	0.50	94.00
4050.00	5.28	317.80	4037.48	-175.50	201.90	-177.95	0.47	95.00

MD ft	Inc deg	Azim deg	TVD ft	VS ft	+N/-S ft	+E/-W ft	DLS °/100ft	Course Length ft
4144.00	5.10	314.99	4131.09	-181.28	208.06	-183.80	0.33	94.00
4237.00	4.84	312.88	4223.74	-187.01	213.65	-189.60	0.34	93.00
4332.00	4.84	318.77	4318.40	-192.52	219.39	-195.17	0.52	95.00
4427.00	4.57	317.36	4413.08	-197.65	225.18	-200.38	0.30	95.00
4521.00	5.10	310.86	4506.75	-203.28	230.67	-206.08	0.81	94.00
4615.00	5.19	316.83	4600.37	-209.28	236.51	-212.14	0.58	94.00
4710.00	4.84	315.08	4695.01	-214.98	242.47	-217.91	0.40	95.00
4803.00	4.22	311.30	4787.72	-220.25	247.51	-223.25	0.74	93.00
4898.00	4.48	317.98	4882.44	-225.31	252.58	-228.36	0.60	95.00
4992.00	3.25	315.16	4976.23	-229.59	257.20	-232.71	1.32	94.00
5086.00	4.22	320.09	5070.03	-233.64	261.74	-236.81	1.08	94.00
5181.00	4.48	321.76	5164.75	-238.11	267.34	-241.35	0.31	95.00
5275.00	3.43	328.70	5258.53	-241.78	272.63	-245.08	1.23	94.00
5370.00	2.64	325.36	5353.39	-244.45	276.86	-247.80	0.85	95.00
5464.00	1.41	306.29	5447.33	-246.58	279.32	-249.96	1.48	94.00
5558.00	0.62	284.14	5541.32	-247.99	280.12	-251.38	0.92	94.00
5652.00	0.18	277.28	5635.32	-248.62	280.27	-252.01	0.47	94.00
5746.00	0.26	122.16	5729.32	-248.58	280.17	-251.97	0.46	94.00

MD ft	Inc deg	Azim deg	TVD ft	VS ft	+N/-S ft	+E/-W ft	DLS °/100ft	Course Length ft
5841.00	5.36	79.09	5824.17	-244.03	280.89	-247.43	5.45	95.00
5935.00	16.27	81.73	5916.36	-226.60	283.63	-230.03	11.61	94.00
6030.00	27.17	88.85	6004.50	-191.61	285.99	-195.07	11.79	95.00
6124.00	37.99	88.85	6083.59	-141.07	287.01	-144.53	11.51	94.00
6218.00	50.12	85.86	6151.03	-75.89	290.21	-79.39	13.09	94.00
6312.00	60.23	90.43	6204.65	1.13	292.51	-2.39	11.47	94.00
6406.00	68.32	89.72	6245.42	85.74	292.42	82.23	8.63	94.00
6501.00	80.64	88.67	6270.79	177.10	293.72	173.58	13.00	95.00
6526.00	84.24	88.85	6274.08	201.88	294.26	198.35	14.44	25.00
6591.00	89.08	91.39	6277.87	266.74	294.12	263.21	8.41	65.00
6684.00	89.52	90.25	6279.01	359.70	292.79	356.20	1.32	93.00
6779.00	91.28	90.25	6278.35	454.68	292.37	451.19	1.85	95.00
6874.00	90.66	90.34	6276.75	549.65	291.88	546.17	0.65	95.00
6968.00	91.45	90.52	6275.02	643.61	291.18	640.15	0.86	94.00
7062.00	89.60	90.08	6274.15	737.59	290.69	734.14	2.02	94.00
7157.00	89.87	89.55	6274.59	832.59	291.00	829.14	0.62	95.00
7251.00	90.31	88.93	6274.44	926.59	292.25	923.13	0.80	94.00
7345.00	91.36	88.93	6273.07	1020.57	294.00	1017.11	1.12	94.00

MD ft	Inc deg	Azim deg	TVD ft	VS ft	+N/-S ft	+E/-W ft	DLS °/100ft	Course Length ft
7439.00	91.01	89.11	6271.13	1114.55	295.60	1111.07	0.42	94.00
7534.00	90.66	89.46	6269.74	1209.54	296.79	1206.05	0.52	95.00
7629.00	89.87	90.16	6269.30	1304.53	297.10	1301.05	1.11	95.00
7723.00	90.92	88.85	6268.65	1398.53	297.91	1395.04	1.80	94.00
7817.00	90.66	88.93	6267.36	1492.52	299.73	1489.02	0.30	94.00
7911.00	90.31	91.04	6266.56	1586.50	299.75	1583.01	2.27	94.00
8006.00	90.04	93.06	6266.27	1681.39	296.34	1677.94	2.15	95.00
8100.00	90.84	92.54	6265.55	1775.21	291.75	1771.82	1.01	94.00
8194.00	89.78	88.41	6265.04	1869.17	290.98	1865.80	4.54	94.00
8288.00	91.80	88.41	6263.75	1963.14	293.59	1959.75	2.15	94.00
8382.00	91.19	88.85	6261.29	2057.10	295.85	2053.69	0.80	94.00
8477.00	91.80	88.58	6258.82	2152.06	297.98	2148.63	0.70	95.00
8571.00	90.13	88.93	6257.23	2246.04	300.01	2242.59	1.82	94.00
8665.00	89.78	87.62	6257.30	2340.02	302.85	2336.55	1.45	94.00
8760.00	90.66	87.88	6256.94	2434.99	306.58	2431.47	0.97	95.00
8854.00	91.71	87.62	6254.99	2528.93	310.27	2525.38	1.16	94.00
8948.00	91.28	88.67	6252.54	2622.88	313.32	2619.29	1.22	94.00
9042.00	90.66	88.41	6250.95	2716.86	315.72	2713.25	0.71	94.00

MD	Inc	Azim	TVD	VS	+N/-S	+E/-W	DLS	Course Length
ft	deg	deg	ft	ft	ft	ft	°/100ft	ft
9137.00	91.36	89.37	6249.27	2811.84	317.56	2808.22	1.26	95.00
9232.00	90.22	89.11	6247.96	2906.83	318.82	2903.20	1.23	95.00
9325.00	89.43	90.25	6248.25	2999.82	319.33	2996.19	1.49	93.00
9420.00	89.69	90.08	6248.98	3094.81	319.06	3091.19	0.33	95.00
9514.00	90.84	90.34	6248.54	3188.79	318.72	3185.19	1.25	94.00
9609.00	88.55	89.99	6249.05	3283.77	318.45	3280.18	2.43	95.00
9703.00	88.81	89.72	6251.22	3377.75	318.68	3374.15	0.40	94.00
9798.00	88.99	90.08	6253.04	3472.72	318.85	3469.13	0.41	95.00
9892.00	89.34	89.64	6254.41	3566.71	319.09	3563.12	0.60	94.00
9987.00	89.52	88.85	6255.36	3661.70	320.34	3658.11	0.85	95.00
10081.00	90.92	89.46	6255.00	3755.70	321.73	3752.10	1.63	94.00
10173.00	91.10	89.55	6253.37	3847.68	322.53	3844.08	0.21	92.00
10265.00	92.86	89.99	6250.20	3939.62	322.90	3936.02	1.97	92.00
10356.00	90.40	89.29	6247.61	4030.58	323.48	4026.97	2.81	91.00
10448.00	91.54	88.67	6246.06	4122.56	325.12	4118.94	1.41	92.00
10539.00	90.40	89.37	6244.52	4213.54	326.67	4209.91	1.47	91.00
10631.00	90.84	88.93	6243.54	4305.54	328.03	4301.90	0.68	92.00
10722.00	90.22	89.20	6242.70	4396.53	329.51	4392.88	0.74	91.00

MD	Inc	Azim	TVD	VS	+N/-S	+E/-W	DLS	Course Length
ft	deg	deg	ft	ft	ft	ft	°/100ft	ft
10814.00	90.66	88.67	6241.99	4488.53	331.23	4484.86	0.75	92.00
10905.00	90.22	87.97	6241.29	4579.51	333.90	4575.82	0.91	91.00
10996.00	90.66	88.85	6240.60	4670.49	336.43	4666.78	1.08	91.00
11088.00	90.48	90.43	6239.68	4762.49	337.01	4758.77	1.73	92.00
11180.00	90.75	92.01	6238.69	4854.43	335.05	4850.74	1.74	92.00
11271.00	90.66	91.13	6237.57	4945.35	332.56	4941.70	0.97	91.00
11363.00	90.57	92.89	6236.58	5037.24	329.33	5033.64	1.91	92.00
11454.00	90.31	90.52	6235.89	5128.15	326.63	5124.59	2.62	91.00
11546.00	91.36	90.78	6234.54	5220.11	325.59	5216.57	1.18	92.00
11637.00	90.31	89.64	6233.22	5311.09	325.26	5307.56	1.71	91.00
11728.00	89.96	88.23	6233.01	5402.08	326.96	5398.54	1.59	91.00
11820.00	90.75	87.00	6232.44	5494.04	330.78	5490.45	1.59	92.00
11911.00	90.48	86.21	6231.47	5584.93	336.17	5581.29	0.92	91.00
12003.00	91.10	87.26	6230.19	5676.83	341.41	5673.13	1.33	92.00
12094.00	90.13	88.23	6229.22	5767.79	344.99	5764.05	1.50	91.00
12186.00	90.48	87.88	6228.72	5859.76	348.11	5856.00	0.54	92.00
12278.00	91.19	88.76	6227.38	5951.74	350.81	5947.95	1.22	92.00
12370.00	90.57	89.55	6225.97	6043.73	352.17	6039.92	1.09	92.00

MD	Inc	Azim	TVD	VS	+N/-S	+E/-W	DLS	Course Length
ft	deg	deg	ft	ft	ft	ft	°/100ft	ft
12462.00	90.22	91.13	6225.33	6135.71	351.62	6131.92	1.76	92.00
12553.00	90.48	92.45	6224.78	6226.62	348.78	6222.87	1.48	91.00
12645.00	91.63	91.04	6223.08	6318.51	345.98	6314.81	1.97	92.00
12736.00	90.04	90.60	6221.75	6409.47	344.67	6405.78	1.81	91.00
12828.00	90.57	88.58	6221.26	6501.46	345.32	6497.78	2.27	92.00
12919.00	91.45	88.41	6219.65	6592.44	347.72	6588.73	0.99	91.00
13011.00	90.92	88.05	6217.75	6684.40	350.56	6680.66	0.69	92.00
13102.00	91.10	88.14	6216.14	6775.37	353.57	6771.60	0.22	91.00
13193.00	91.28	89.02	6214.26	6866.34	355.83	6862.55	0.98	91.00
13285.00	89.25	89.81	6213.83	6958.33	356.76	6954.54	2.36	92.00
13376.00	89.34	89.02	6214.95	7049.32	357.69	7045.53	0.87	91.00
13468.00	89.34	88.93	6216.01	7141.32	359.33	7137.51	0.10	92.00
13559.00	90.66	88.58	6216.01	7232.31	361.30	7228.48	1.50	91.00
13651.00	90.40	87.97	6215.16	7324.29	364.07	7320.44	0.73	92.00
13743.00	90.84	87.18	6214.17	7416.24	367.97	7412.35	0.98	92.00
13834.00	90.13	85.33	6213.41	7507.11	373.92	7503.15	2.17	91.00
13925.00	91.36	88.67	6212.22	7598.01	378.68	7594.00	3.91	91.00
14017.00	91.71	87.97	6209.75	7689.96	381.38	7685.93	0.85	92.00

MD	Inc	Azim	TVD	VS	+N/-S	+E/-W	DLS	Course Length
ft	deg	deg	ft	ft	ft	ft	°/100ft	ft
14108.00	91.54	89.46	6207.16	7780.92	383.42	7776.86	1.65	91.00
14200.00	90.84	87.88	6205.26	7872.89	385.55	7868.82	1.88	92.00
14291.00	90.22	87.70	6204.42	7963.85	389.06	7959.74	0.70	91.00
14383.00	90.57	89.72	6203.78	8055.84	391.13	8051.71	2.23	92.00
14474.00	90.92	89.02	6202.60	8146.83	392.12	8142.70	0.86	91.00
14565.00	91.28	89.29	6200.85	8237.81	393.47	8233.67	0.48	91.00
14657.00	90.04	89.99	6199.79	8329.80	394.05	8325.66	1.54	92.00
14749.00	90.40	89.37	6199.44	8421.80	394.56	8417.66	0.77	92.00
14840.00	90.48	88.67	6198.74	8512.80	396.12	8508.64	0.78	91.00
14932.00	90.57	91.04	6197.89	8604.78	396.35	8600.63	2.58	92.00
15024.00	91.80	90.69	6195.99	8696.73	394.96	8692.60	1.39	92.00
15115.00	90.04	90.78	6194.52	8787.68	393.79	8783.58	1.94	91.00
15207.00	90.22	90.78	6194.31	8879.65	392.54	8875.57	0.19	92.00
15298.00	90.84	90.08	6193.47	8970.63	391.86	8966.56	1.03	91.00
15393.00	90.84	90.34	6192.09	9065.61	391.51	9061.55	0.28	95.00
15487.00	90.84	89.29	6190.72	9159.59	391.82	9155.54	1.12	94.00
15582.00	90.75	89.11	6189.40	9254.58	393.15	9250.52	0.21	95.00
15676.00	91.19	88.58	6187.82	9348.57	395.04	9344.49	0.73	94.00

2" = 100' FEET MD