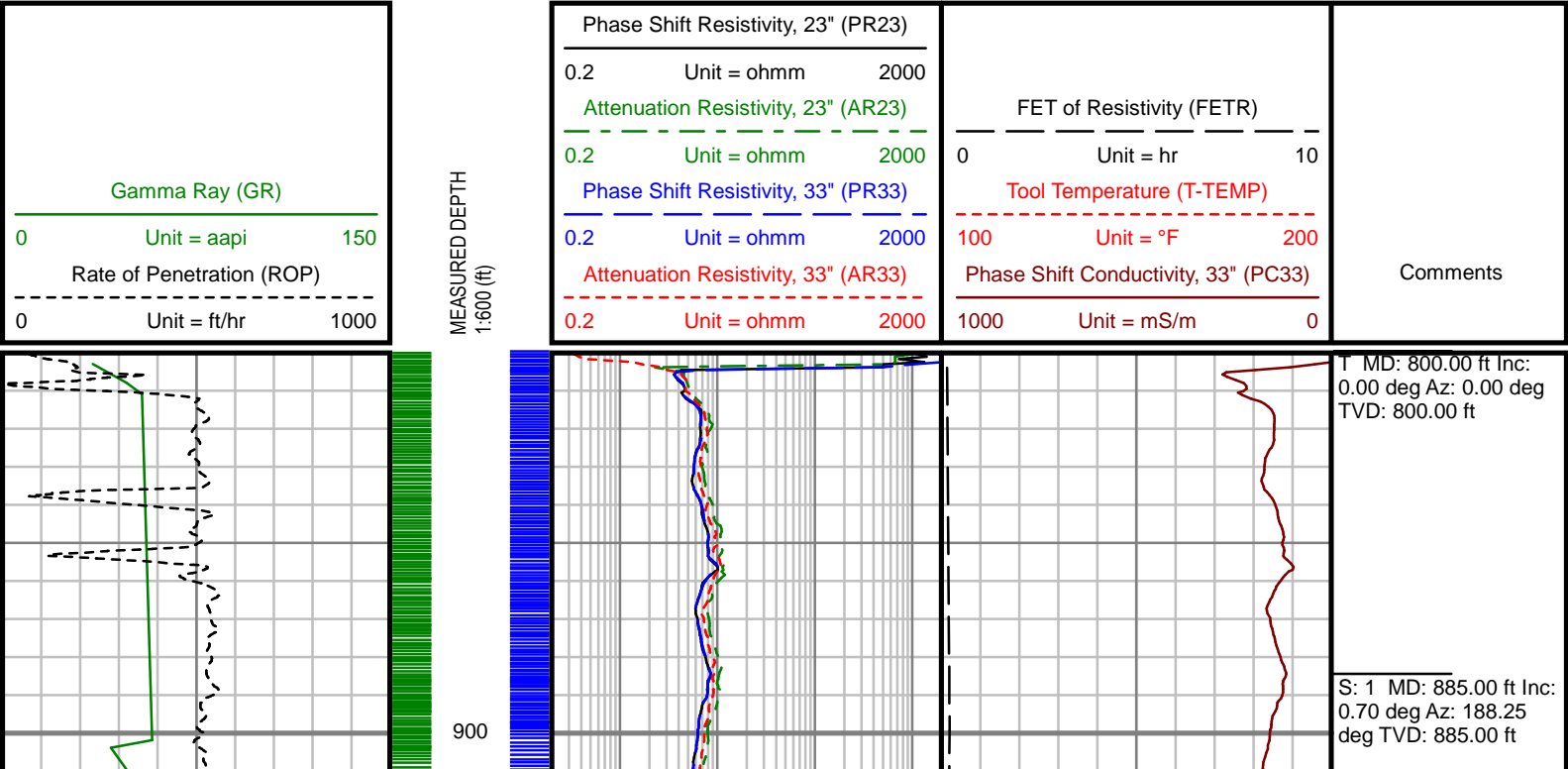
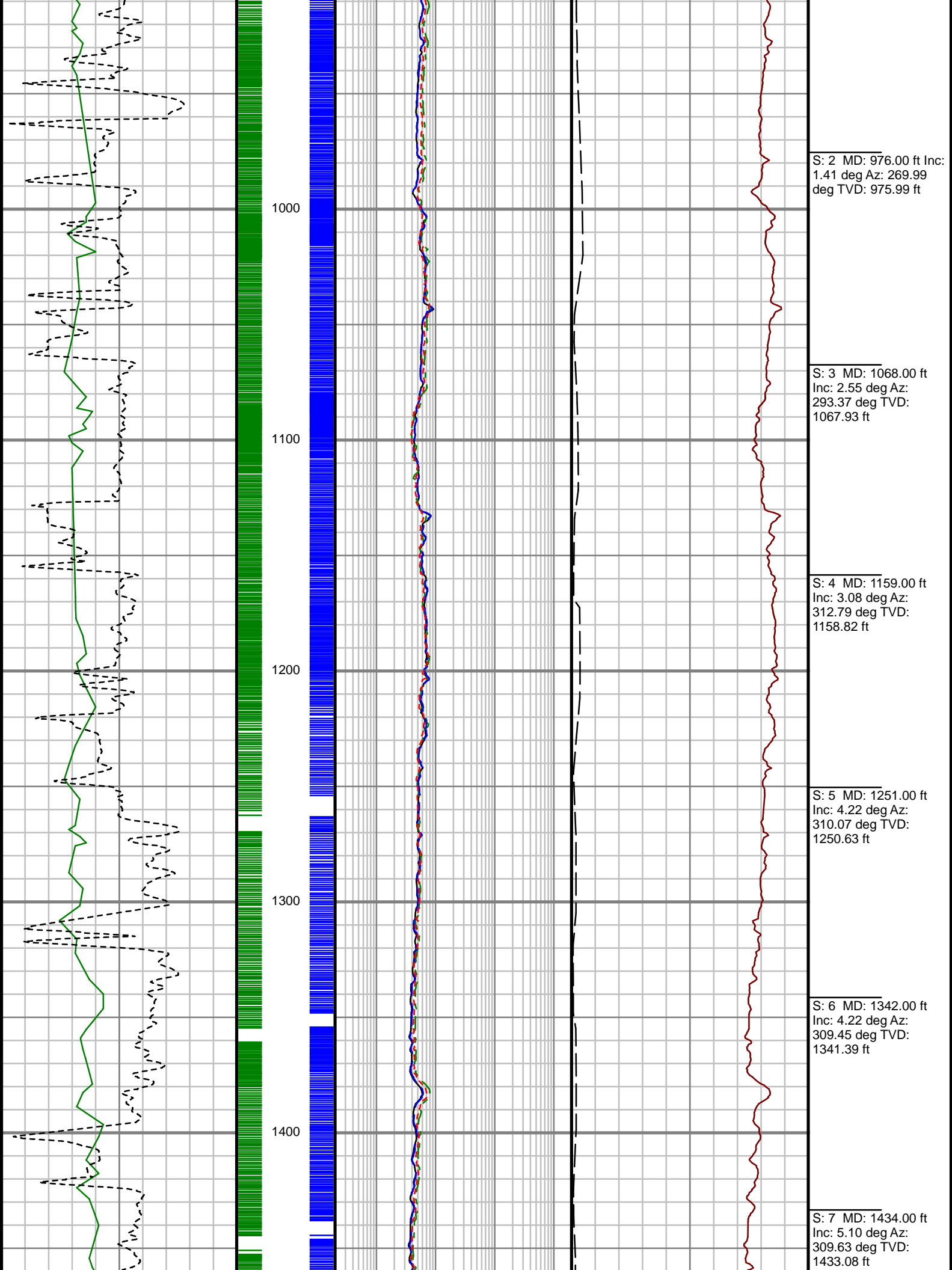


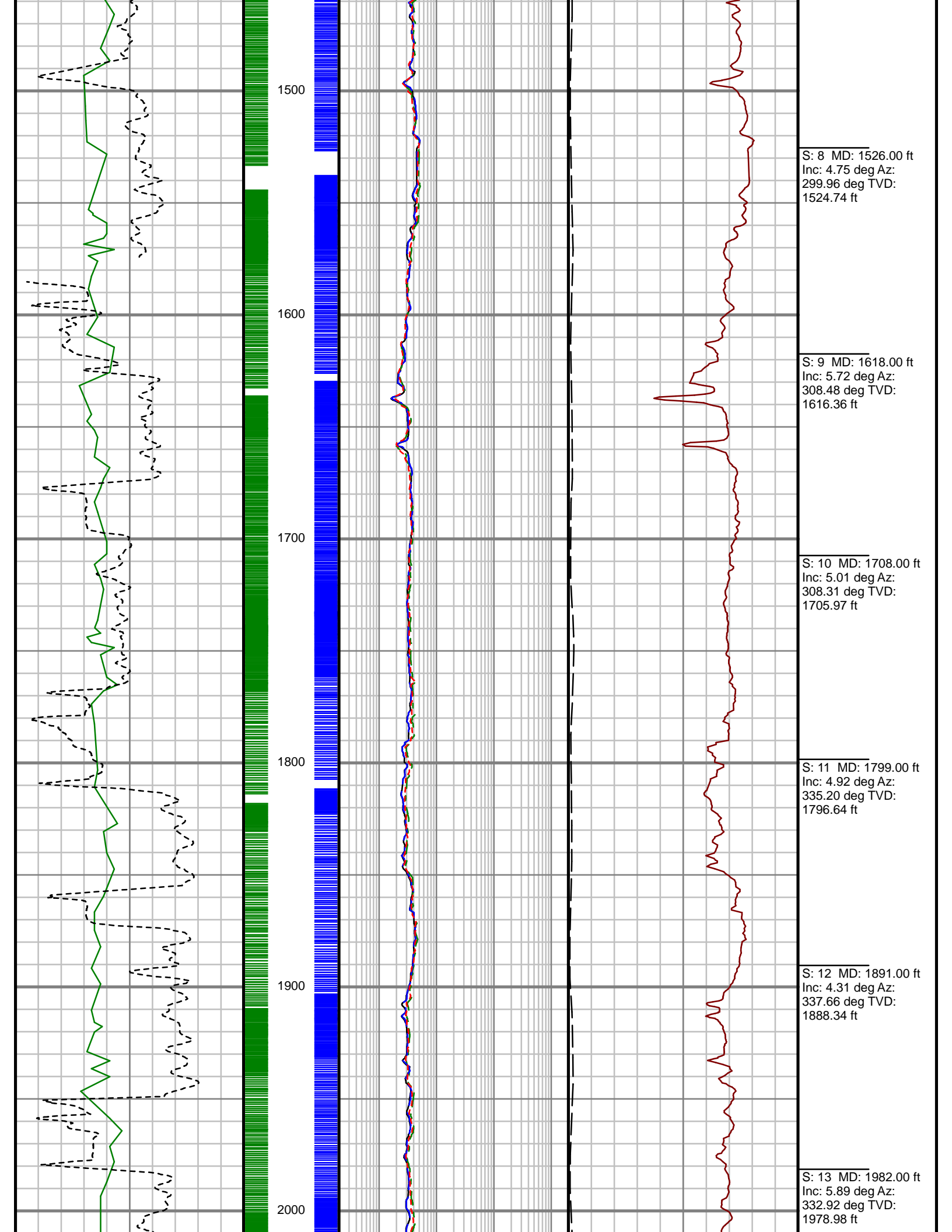
Remarks	
BILL BARRETT CORPORATION PRODUCTION AFE# 19403D	
SCIENTIFIC DRILLING INTERNATIONAL JOB# 341412	
ALL REFERENCES IN THE DEPTH TRACK ARE AT BIT DEPTH.	
ALL DATA IS MEMORY DATA UNLESS STATED OTHERWISE.	
FLAT AVERAGE FILTER OF 1.00 FT APPLIED TO GAMMA RAY CURVE	
FLAT AVERAGE FILTER OF 1.00 FT APPLIED TO RATE OF PENETRATION CURVE	
FLAT AVERAGE FILTER OF 1.00 FT APPLIED TO PHASE SHIFT RESISTIVITY, 23" CURVE	
FLAT AVERAGE FILTER OF 1.00 FT APPLIED TO ATTENUATION RESISTIVITY, 23" CURVE	
FLAT AVERAGE FILTER OF 1.00 FT APPLIED TO PHASE SHIFT RESISTIVITY, 33" CURVE	
FLAT AVERAGE FILTER OF 1.00 FT APPLIED TO ATTENUATION RESISTIVITY, 33" CURVE	
FLAT AVERAGE FILTER OF 1.00 FT APPLIED TO TOOL TEMPERATURE CURVE	
FLAT AVERAGE FILTER OF 1.00 FT APPLIED TO PHASE SHIFT CONDUCTIVITY, 33" CURVE	
RUN #1: PROPOGATION RESISTIVITY / GAMMA RAY LOGGINNG RUN	
SENSORS S/N: PULSER = 128-098 / CONT = 257 / MWD EYE = 0229 / GAMMA RAY = 1297 / PRT = 341	
BIT TO SENSOR OFFSETS: SURVEY = 59.00 FT. / PRT = 46.7 FT. / GAMMA RAY = 40.2 FT.	
MNEMONICS LIST:	
GR = GAMMA RAY	AR33 = ATTENUATION RESISTIVITY, 33"
ROP = RATE OF PENETRATION	FETR = FET OF RESISTIVITY
PR23 = PHASE SHIFT RESISTIVITY, 23"	T-TEMP = TOOL TEMPERATURE
AR23 = ATTENUATION RESISTIVITY, 23"	PC33 = PHASE SHIFT CONDUCTIVITY, 33"
PR33 = PHASE SHIFT RESISTIVITY, 33"	

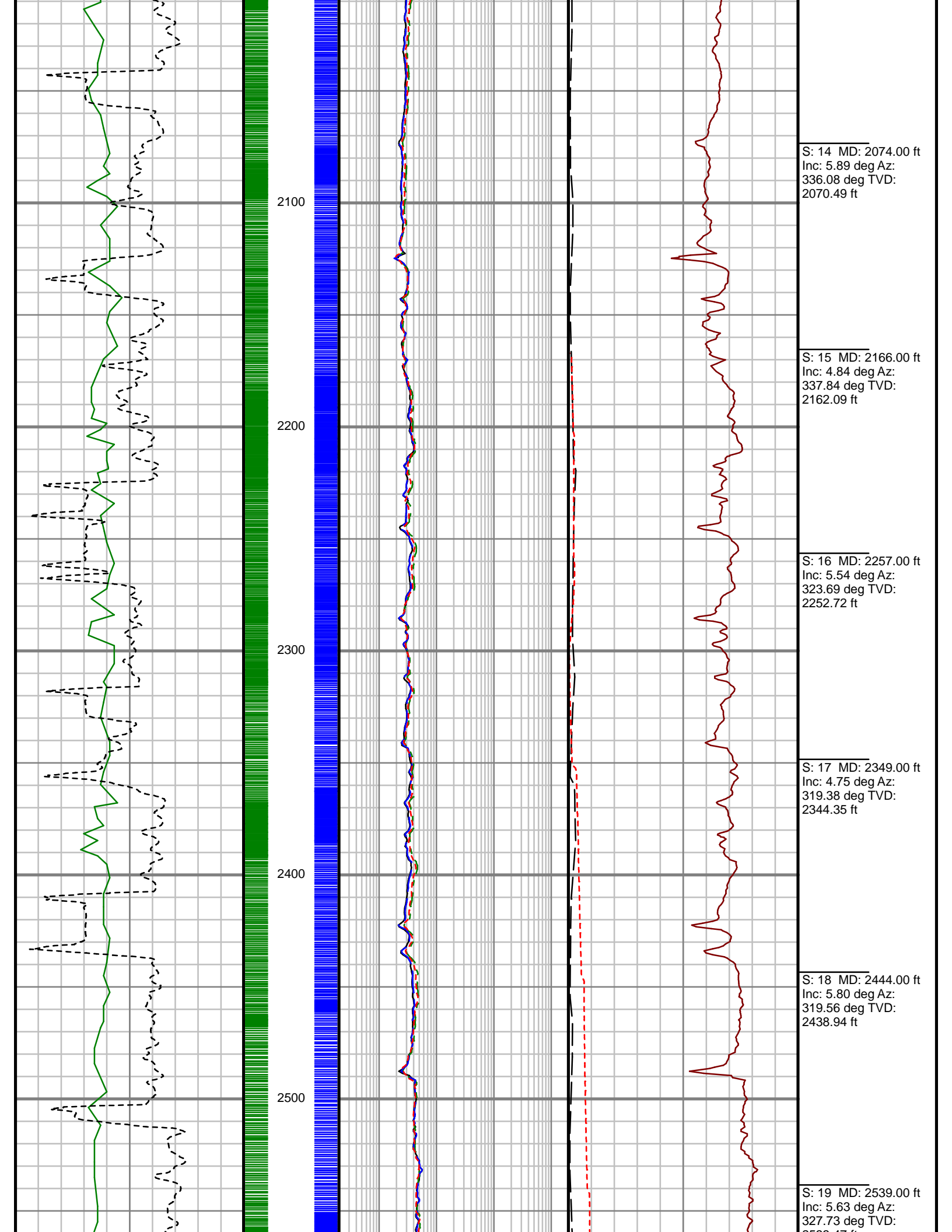
All interpretations are opinions based on inferences from electrical or other measurements and we cannot, and do not guarantee the accuracy or correctness of any interpretations, and we shall not, except in the case of gross or willful negligence on our part, be liable or responsible for any loss, costs, damages or expenses incurred or sustained by anyone resulting from any interpretation made by any of our officers, agents or employees. These interpretations are also subject to our general terms and conditions as set out in our current price schedule.

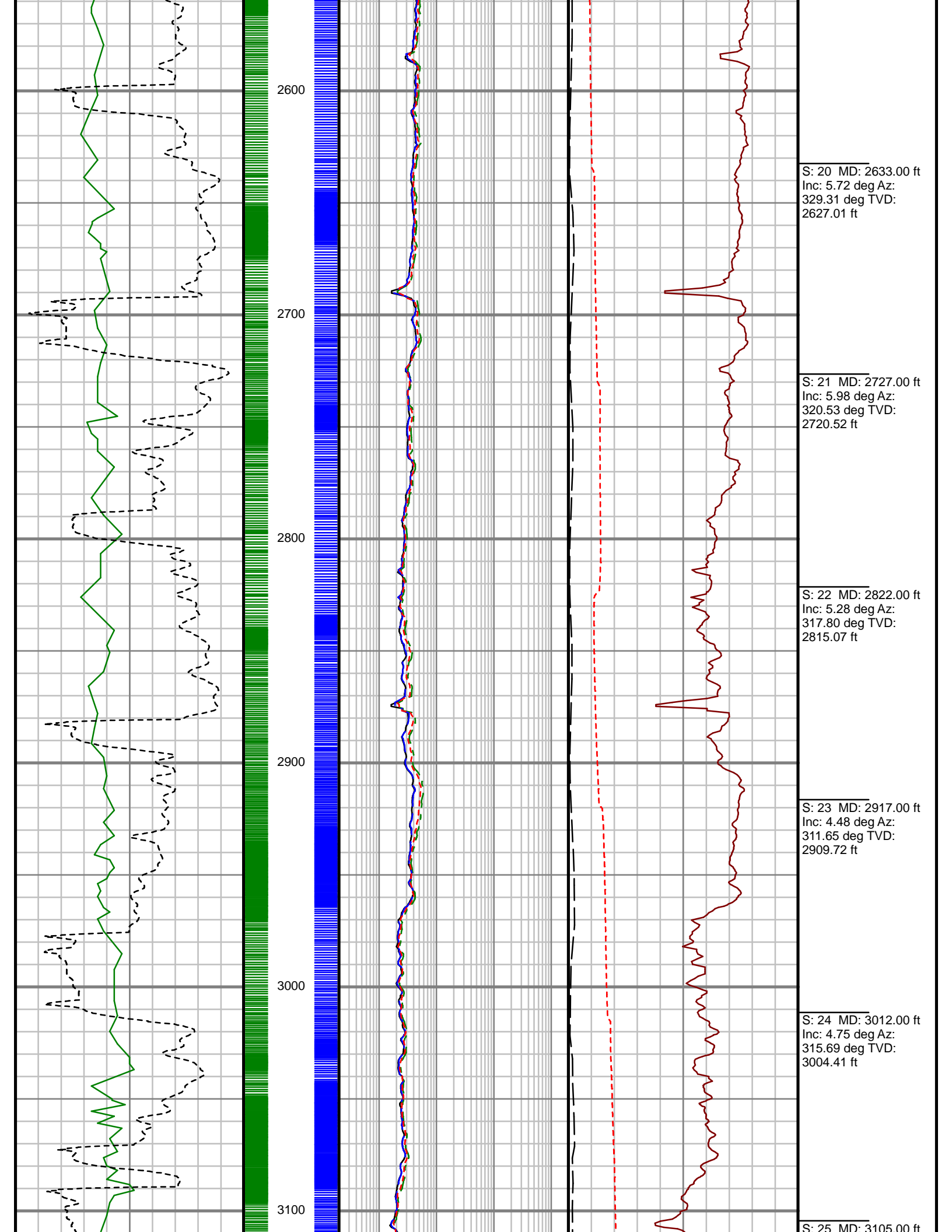
BILL BARRETT CORPORATION
ANSCHUTZ EQUUS FARMS 4-62-9-3340C2
WATTENBERG FIELD
WELD COUNTY, COLORADO
05-123-42406

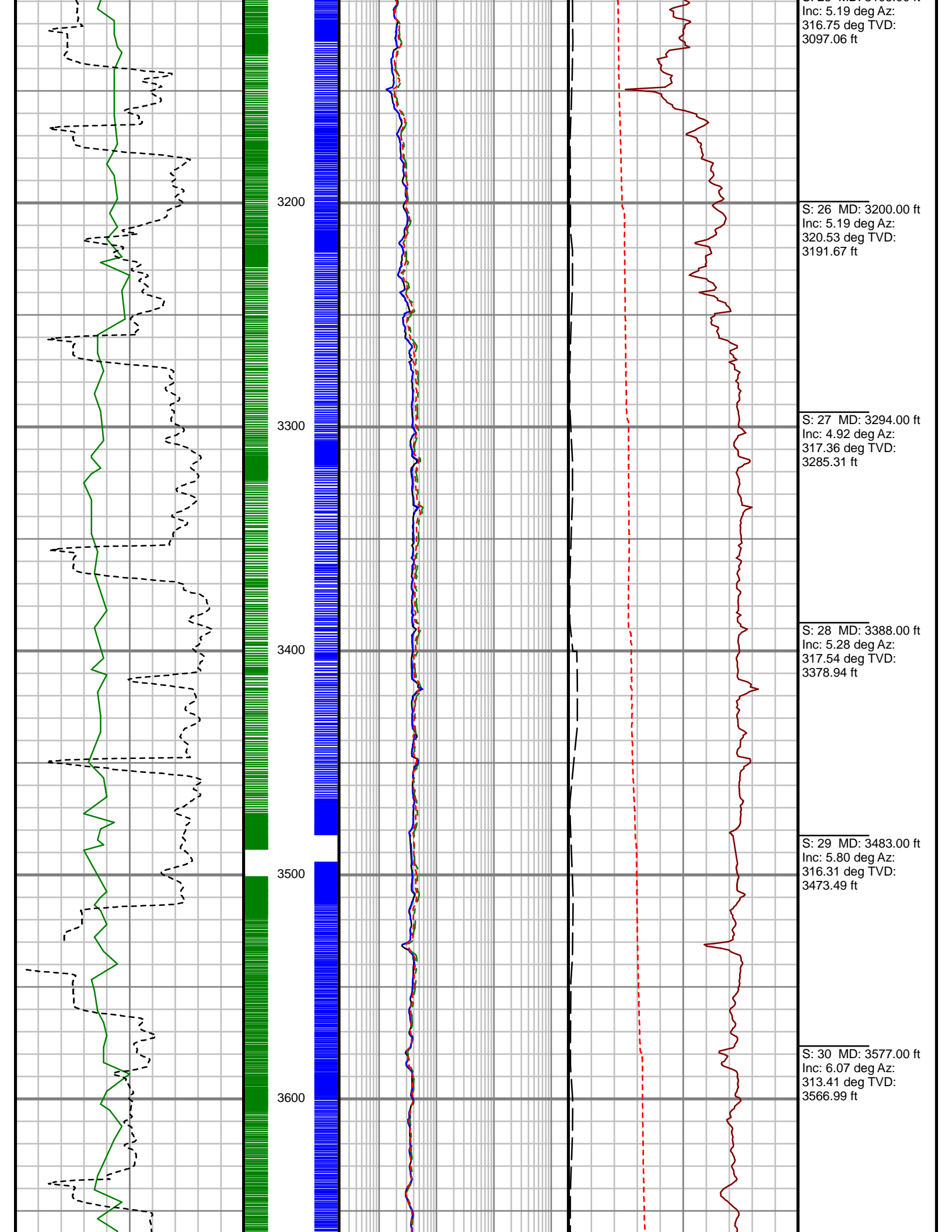


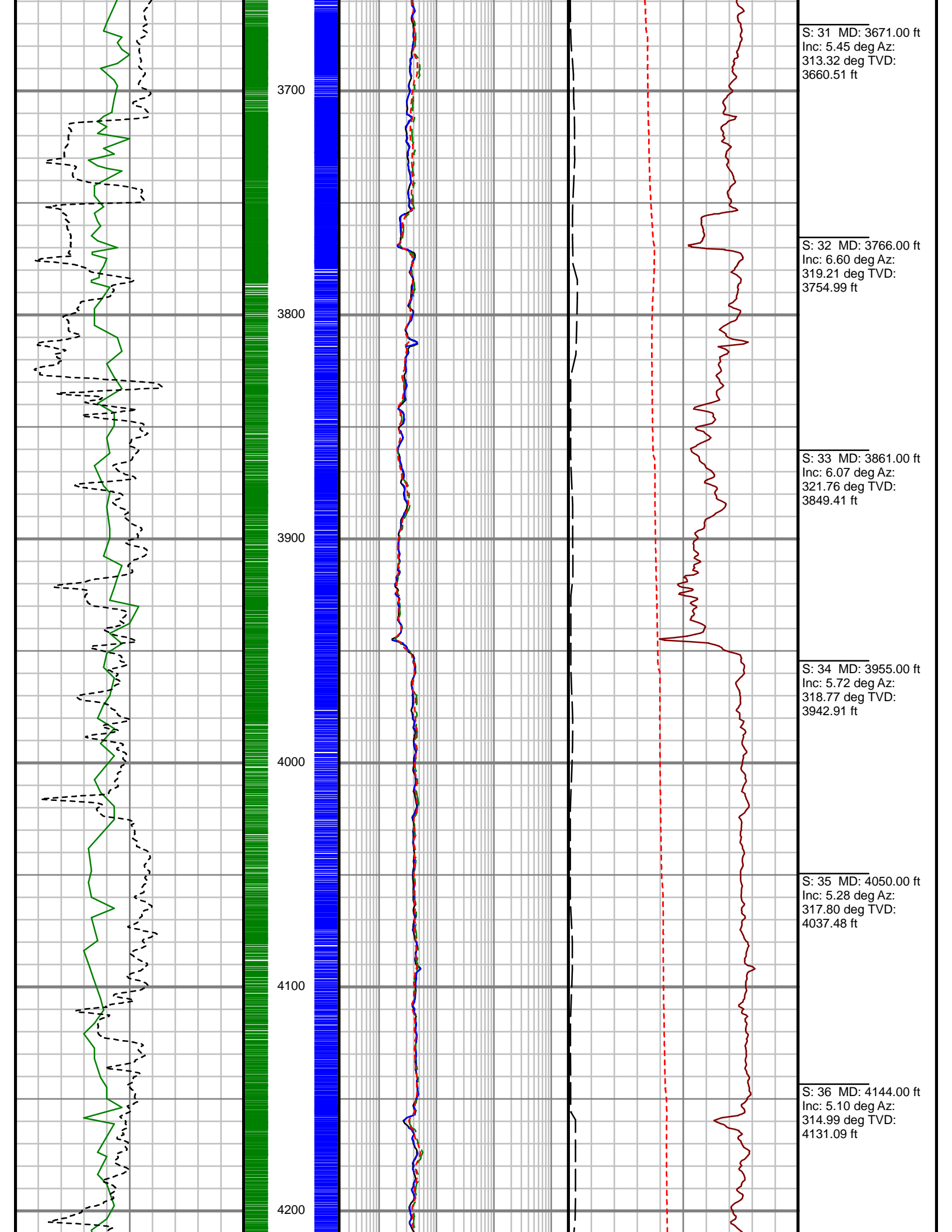


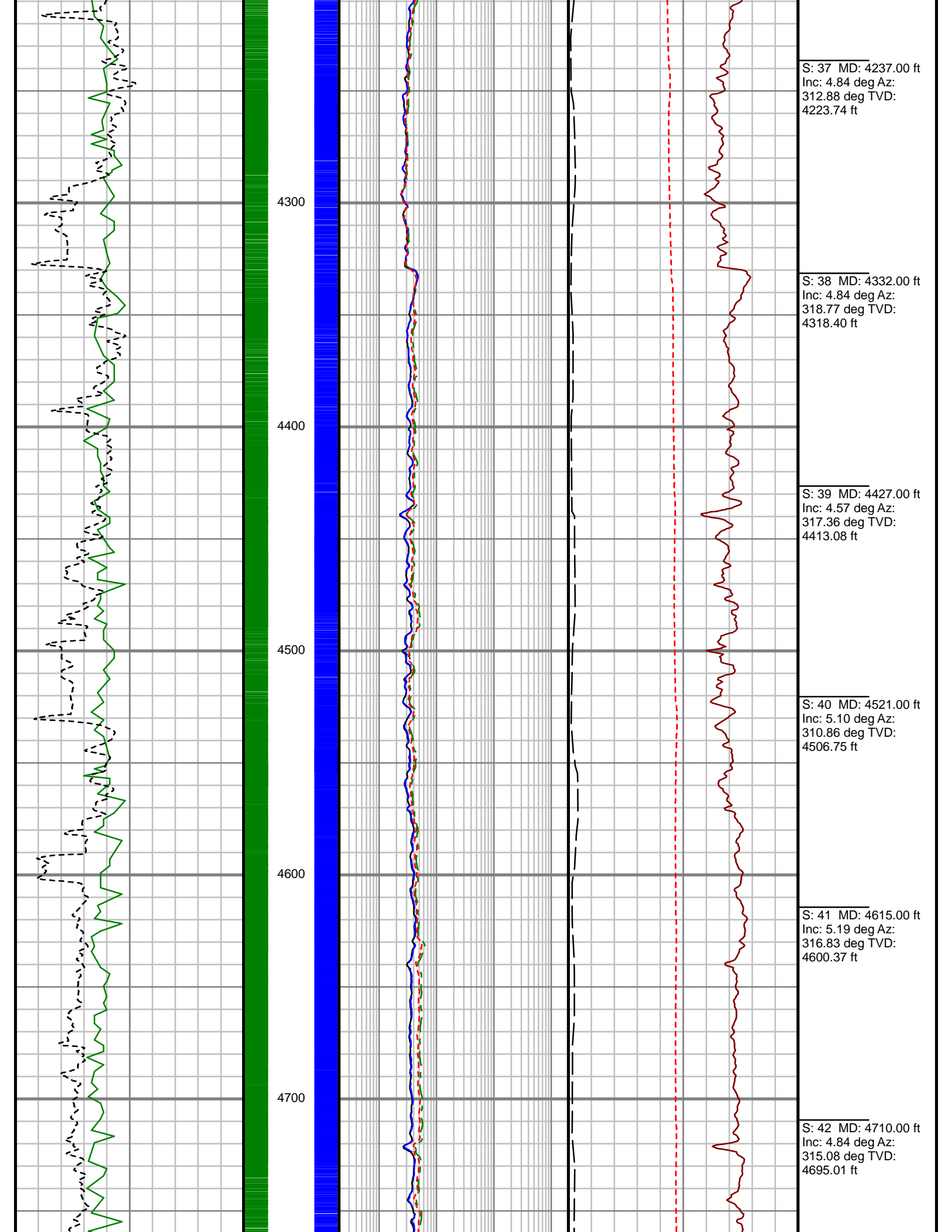


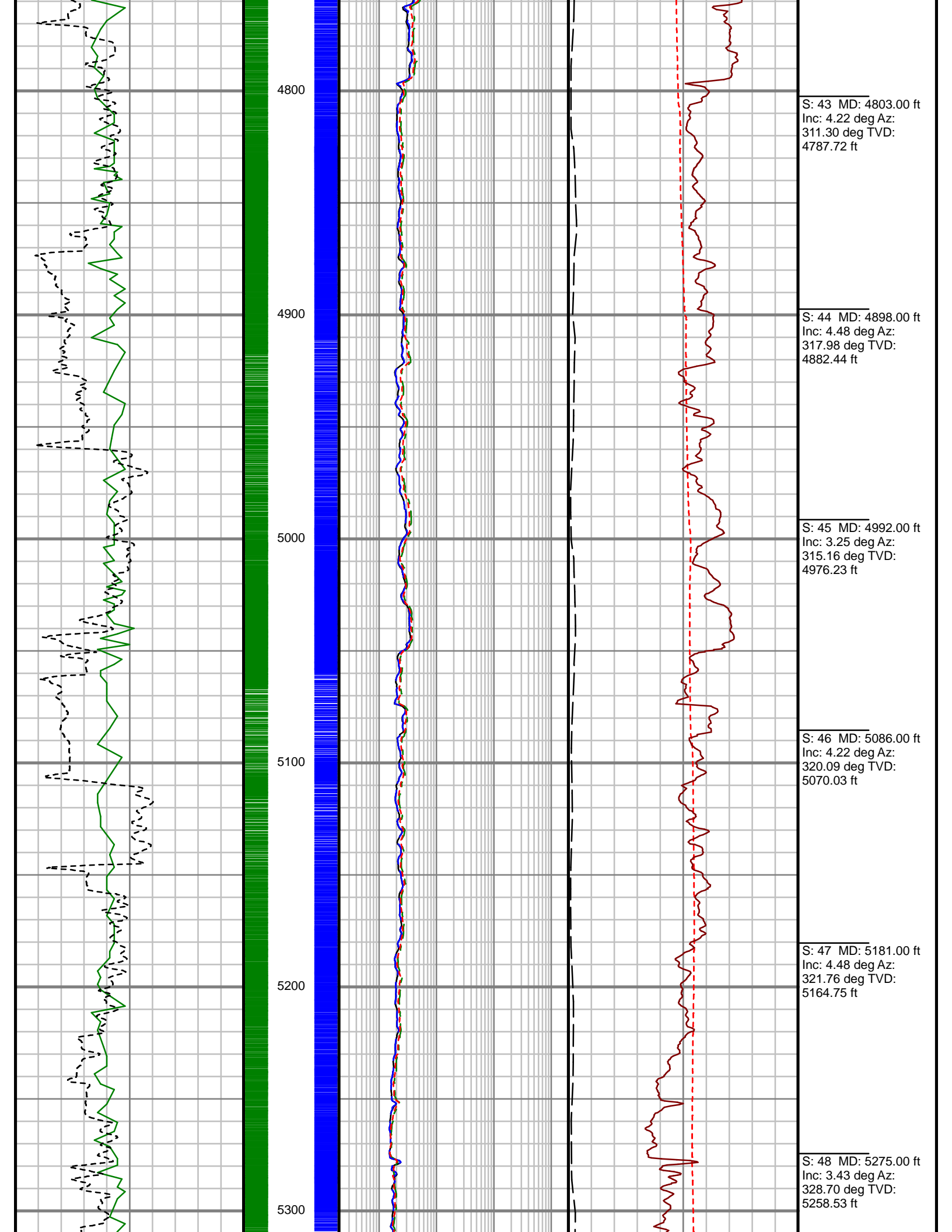


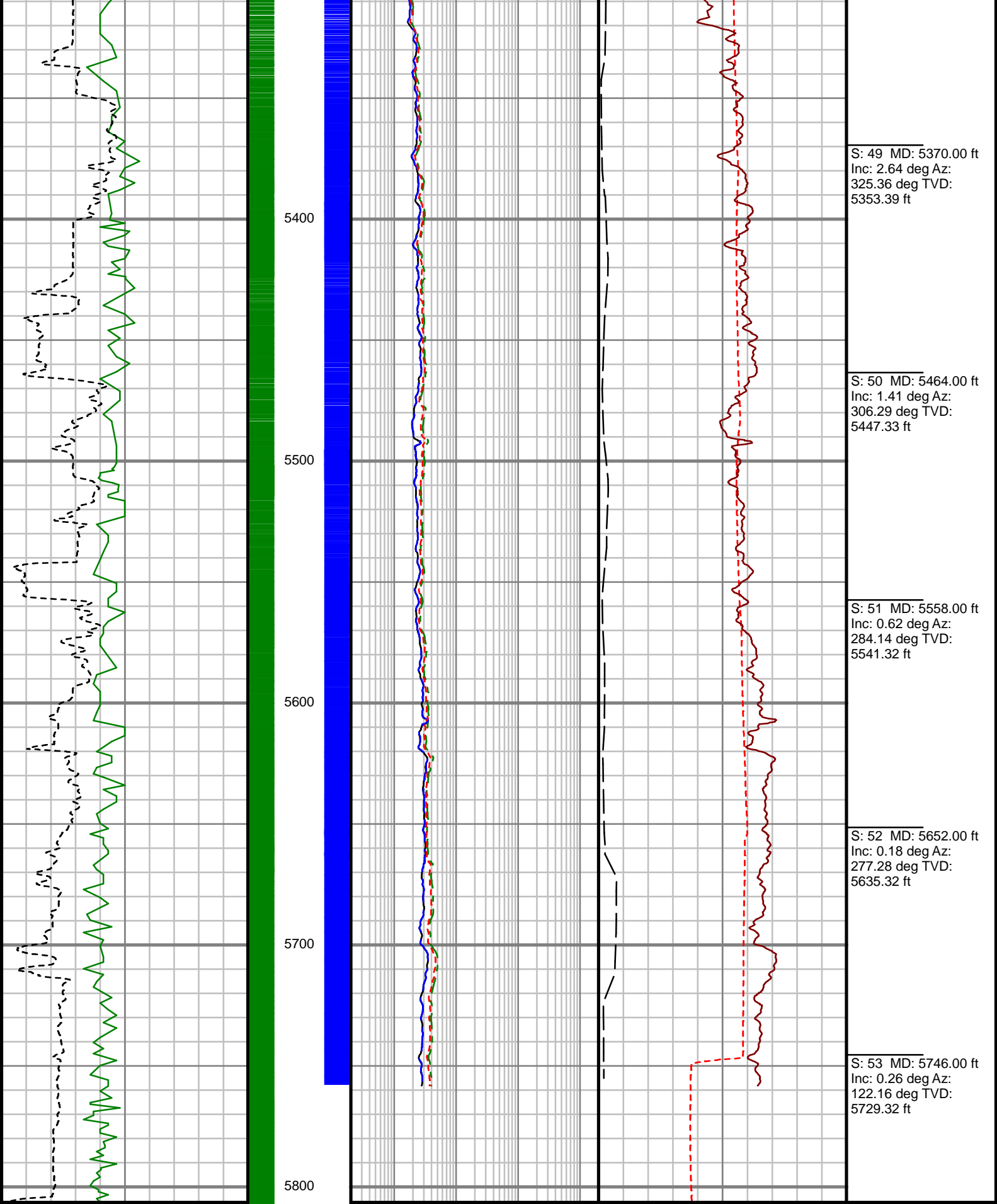












S: 49 MD: 5370.00 ft
Inc: 2.64 deg Az:
325.36 deg TVD:
5353.39 ft

S: 50 MD: 5464.00 ft
Inc: 1.41 deg Az:
306.29 deg TVD:
5447.33 ft

S: 51 MD: 5558.00 ft
Inc: 0.62 deg Az:
284.14 deg TVD:
5541.32 ft

S: 52 MD: 5652.00 ft
Inc: 0.18 deg Az:
277.28 deg TVD:
5635.32 ft

S: 53 MD: 5746.00 ft
Inc: 0.26 deg Az:
122.16 deg TVD:
5729.32 ft

Rate of Penetration (ROP)

0Unit = ft/hr1000

Gamma Ray (GR)

0Unit = aapi150

MEASURED DEPTH
1:600 (ft)

Attenuation Resistivity, 33" (AR33)

0.2Unit = ohmm2000

Phase Shift Resistivity, 33" (PR33)

0.2Unit = ohmm2000

Attenuation Resistivity, 23" (AR23)

Phase Shift Conductivity, 33" (PC33)

1000Unit = mS/m0

Tool Temperature (T-TEMP)

100Unit = °F200

FET of Resistivity (FETR)

Comments



Attenuation Resistivity, 23" (AR23)		
0.2	Unit = ohmm	2000
Phase Shift Resistivity, 23" (PR23)		
0.2	Unit = ohmm	2000

PEFC Resistivity (PEFR)		
0	Unit = hr	10



SURVEY REPORT

ANSCHUTZ EQUUS FARMS 4-62-9-3340C2 ANSCHUTZ STATE FARMS 4-62-9-3340C2

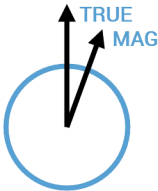
CUSTOMER BILL BARRETT CORPORATION
PROJECT ANSCHUTZ EQUUS FARMS
 4-62-9-3340C2
FIELD WATTENBERG

WELL INFORMATION
Lat/Long 40° 19' 33.229" N, 104° 20' 18.668" W
Northing 1,363,685.9 ft
Easting 3,323,828.82 ft
UWI 05-123-42406

MAP INFORMATION

North Reference True North
Grid Correction
System US State Plane 1983
Datum North American Datum 1983 (GRS 1980)
Map Zone Colorado North: 0501

VERTICAL SECTION REFERENCE
+N/-S 0 ft
+E/-W 0 ft
Proposal Direction 89.31°
Calculation Method Minimum Curvature



GEOMAGNETIC REFERENCE INFORMATION

Local Gravity: 999.102 mG [computed]

MD	MODEL	DATE	DECLINATION	MAG TO TRUE
800-6526 ft	BGGM2015	17 Jan 2016	8.25°	add 8.25°

WELL NOTES

OPERATORS
C. CHRISTMAN, R. KLASSEN

MD	Inc	Azim	TVD	VS	+N/-S	+E/-W	DLS	Course Length
ft	deg	deg	ft	ft	ft	ft	°/100ft	ft
800.00	0.00	0.00	800.00	0.00	0.00	0.00	Invalid	Invalid
885.00	0.70	188.25	885.00	-0.08	-0.52	-0.07	0.83	85.00
976.00	1.41	269.99	975.99	-1.29	-1.07	-1.27	1.63	91.00
1068.00	2.55	293.37	1067.93	-4.28	-0.26	-4.28	1.50	92.00
1159.00	3.08	312.79	1158.82	-7.90	2.20	-7.93	1.19	91.00
1251.00	4.22	310.07	1250.63	-12.26	6.06	-12.34	1.26	92.00
1342.00	4.22	309.45	1341.39	-17.36	10.35	-17.48	0.05	91.00
1434.00	5.10	309.63	1433.08	-23.06	15.10	-23.25	0.96	92.00
1526.00	4.75	299.96	1524.74	-29.46	19.61	-29.70	0.98	92.00
1618.00	5.72	308.48	1616.36	-36.29	24.37	-36.58	1.35	92.00
1708.00	5.01	308.31	1705.97	-42.82	29.59	-43.18	0.78	90.00
1799.00	4.92	335.20	1796.64	-47.50	35.60	-47.93	2.54	91.00
1891.00	4.31	337.66	1888.34	-50.39	42.39	-50.90	0.70	92.00
1982.00	5.89	332.92	1978.98	-53.73	49.71	-54.33	1.80	91.00
2074.00	5.89	336.08	2070.49	-57.69	58.23	-58.39	0.35	92.00
2166.00	4.84	337.84	2162.09	-60.97	66.13	-61.77	1.16	92.00
2257.00	5.54	323.69	2252.72	-64.93	73.23	-65.82	1.60	91.00
2349.00	4.75	319.38	2344.35	-69.96	79.70	-70.93	0.96	92.00

MD	Inc	Azim	TVD	VS	+N/-S	+E/-W	DLS	Course Length
ft	deg	deg	ft	ft	ft	ft	°/100ft	ft
2444.00	5.80	319.56	2438.94	-75.56	86.34	-76.60	1.11	95.00
2539.00	5.63	327.73	2533.47	-81.07	93.93	-82.21	0.88	95.00
2633.00	5.72	329.31	2627.01	-85.82	101.85	-87.05	0.19	94.00
2727.00	5.98	320.53	2720.52	-91.23	109.66	-92.56	0.99	94.00
2822.00	5.28	317.80	2815.07	-97.22	116.71	-98.64	0.79	95.00
2917.00	4.48	311.65	2909.72	-102.86	122.42	-104.35	1.00	95.00
3012.00	4.75	315.69	3004.41	-108.32	127.70	-109.87	0.44	95.00
3105.00	5.19	316.75	3097.06	-113.82	133.52	-115.44	0.48	93.00
3200.00	5.19	320.53	3191.67	-119.42	139.96	-121.11	0.36	95.00
3294.00	4.92	317.36	3285.31	-124.78	146.21	-126.55	0.41	94.00
3388.00	5.28	317.54	3378.94	-130.35	152.37	-132.20	0.37	94.00
3483.00	5.80	316.31	3473.49	-136.54	159.06	-138.46	0.57	95.00
3577.00	6.07	313.41	3566.99	-143.35	165.91	-145.36	0.42	94.00
3671.00	5.45	313.32	3660.51	-150.13	172.39	-152.21	0.65	94.00
3766.00	6.60	319.21	3754.99	-156.89	179.61	-159.06	1.37	95.00
3861.00	6.07	321.76	3849.41	-163.46	187.69	-165.73	0.63	95.00
3955.00	5.72	318.77	3942.91	-169.53	195.11	-171.89	0.50	94.00
4050.00	5.28	317.80	4037.48	-175.50	201.90	-177.95	0.47	95.00

MD	Inc	Azim	TVD	VS	+N/-S	+E/-W	DLS	Course Length
ft	deg	deg	ft	ft	ft	ft	°/100ft	ft
4144.00	5.10	314.99	4131.09	-181.28	208.06	-183.80	0.33	94.00
4237.00	4.84	312.88	4223.74	-187.01	213.65	-189.60	0.34	93.00
4332.00	4.84	318.77	4318.40	-192.52	219.39	-195.17	0.52	95.00
4427.00	4.57	317.36	4413.08	-197.65	225.18	-200.38	0.30	95.00
4521.00	5.10	310.86	4506.75	-203.28	230.67	-206.08	0.81	94.00
4615.00	5.19	316.83	4600.37	-209.28	236.51	-212.14	0.58	94.00
4710.00	4.84	315.08	4695.01	-214.98	242.47	-217.91	0.40	95.00
4803.00	4.22	311.30	4787.72	-220.25	247.51	-223.25	0.74	93.00
4898.00	4.48	317.98	4882.44	-225.31	252.58	-228.36	0.60	95.00
4992.00	3.25	315.16	4976.23	-229.59	257.20	-232.71	1.32	94.00
5086.00	4.22	320.09	5070.03	-233.64	261.74	-236.81	1.08	94.00
5181.00	4.48	321.76	5164.75	-238.11	267.34	-241.35	0.31	95.00
5275.00	3.43	328.70	5258.53	-241.78	272.63	-245.08	1.23	94.00
5370.00	2.64	325.36	5353.39	-244.45	276.86	-247.80	0.85	95.00
5464.00	1.41	306.29	5447.33	-246.58	279.32	-249.96	1.48	94.00
5558.00	0.62	284.14	5541.32	-247.99	280.12	-251.38	0.92	94.00
5652.00	0.18	277.28	5635.32	-248.62	280.27	-252.01	0.47	94.00
5746.00	0.26	122.16	5729.32	-248.58	280.17	-251.97	0.46	94.00

MD ft	Inc deg	Azim deg	TVD ft	VS ft	+N/-S ft	+E/-W ft	DLS °/100ft	Course Length ft
5841.00	5.36	79.09	5824.17	-244.03	280.89	-247.43	5.45	95.00
5935.00	16.27	81.73	5916.36	-226.60	283.63	-230.03	11.61	94.00
6030.00	27.17	88.85	6004.50	-191.61	285.99	-195.07	11.79	95.00
6124.00	37.99	88.85	6083.59	-141.07	287.01	-144.53	11.51	94.00
6218.00	50.12	85.86	6151.03	-75.89	290.21	-79.39	13.09	94.00
6312.00	60.23	90.43	6204.65	1.13	292.51	-2.39	11.47	94.00
6406.00	68.32	89.72	6245.42	85.74	292.42	82.23	8.63	94.00
6501.00	80.64	88.67	6270.79	177.10	293.72	173.58	13.00	95.00
6526.00	84.24	88.85	6274.08	201.88	294.26	198.35	14.44	25.00

MD	Inc	Azim	TVD	VS	+N/-S	+E/-W	DLS	Course Length
ft	deg	deg	ft	ft	ft	ft	°/100ft	ft

2" = 100' FEET MD