

**Brand X**  
Wireline LLC

**GAMMA RAY C.C.L.**  
**CEMENT BOND V.D.L.**  
**TEMP**

Company CRESTONE PEAK RESOURCES  
Well FILE 41-17  
Field WATTENBERG  
County WELD  
State COLORADO

Company CRESTONE PEAK RESOURCES  
Well FILE 41-17  
Field WATTENBERG  
County WELD State COLORADO

Location: 1065' FNL & 1714' FEL  
NWNE  
SEC 17 TWP 2N RGE 68W  
API #: 05.123.34127  
Permanent Datum GL Elevation 4883'  
Log Measured From KB  
Drilling Measured From KB  
Other Services  
Elevation  
K.B. 4896'  
D.F. 4895'  
G.L. 4883'

Date 17-JUNE-2020  
Run Number ONE  
Depth Driller 8185'  
Depth Logger 1518'  
Bottom Logged Interval 1518'  
Top Log Interval SURFACE  
Open Hole Size 7.875"  
Type Fluid WATER  
Density / Viscosity 8.34PPG  
Max. Recorded Temp. 90.4°F  
Estimated Cement Top SEE LOG  
Time Well Ready PM  
Time Logger on Bottom 12.15PM  
Equipment Number 14189  
Location STERLING CO  
Recorded By LEROY HOBBS  
Witnessed By MATT RHONE

Borehole Record				Tubing Record			
Run Number	Bit	From	To	Size	Weight	From	To
Casing Record	Size					Top	Bottom
Surface String	8.625"			24#		SURFACE	1007'
Prot. String							
Production String	4.50"			11.6#		SURFACE	8002'
Liner							

<<< Fold Here >>>

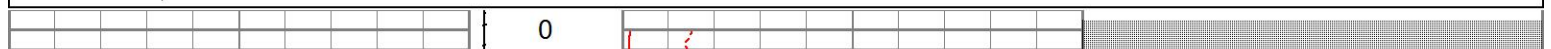
All interpretations are opinions based on inferences from electrical or other measurements and we cannot and do not guarantee the accuracy or correctness of any interpretation, and we shall not, except in the case of gross or willful negligence on our part, be liable or responsible for any loss, costs, damages, or expenses incurred or sustained by anyone resulting from any interpretation made by any of our officers, agents or employees. These interpretations are also subject to our general terms and conditions set out in our current Price Schedule.

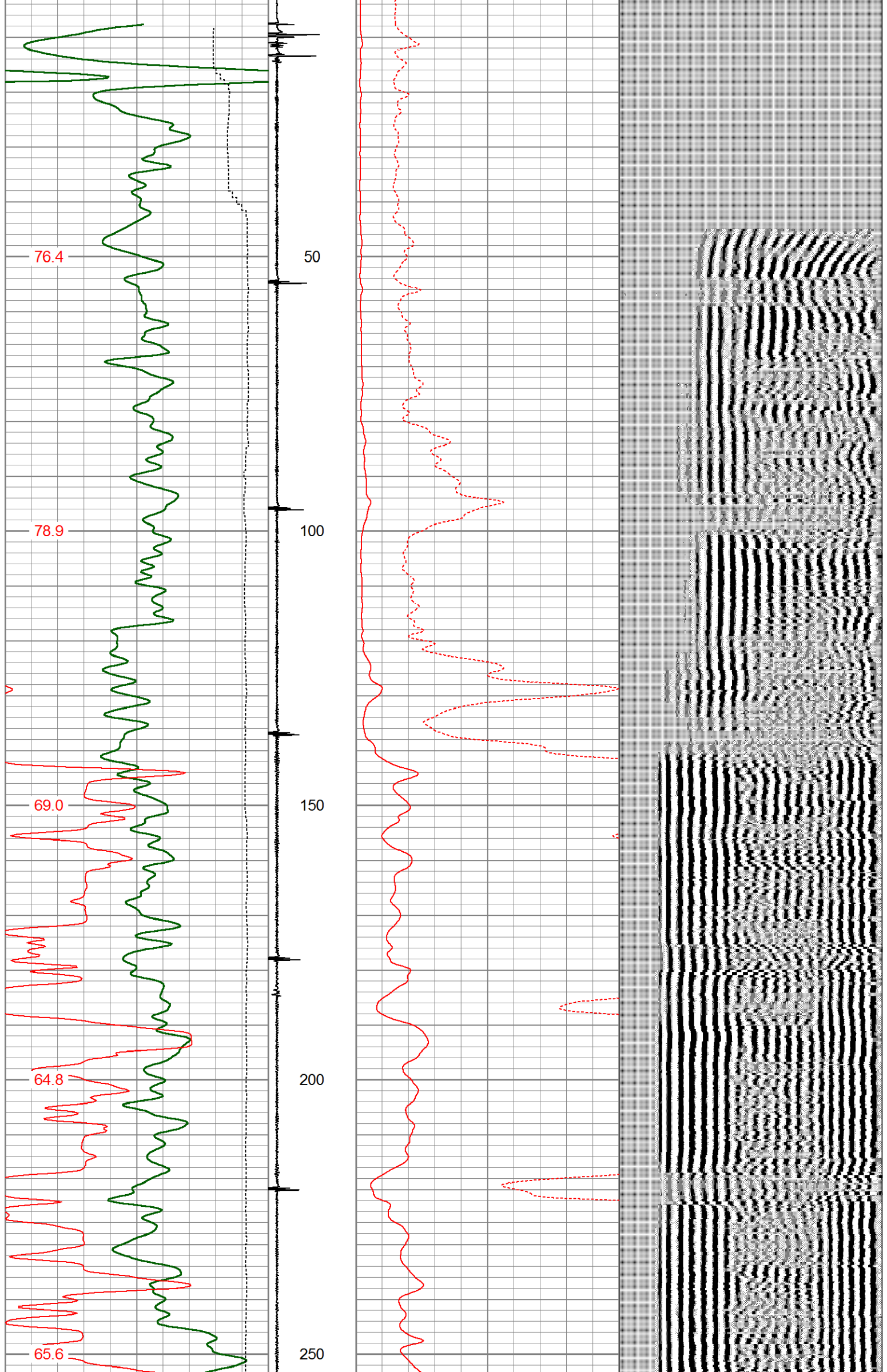
Comments

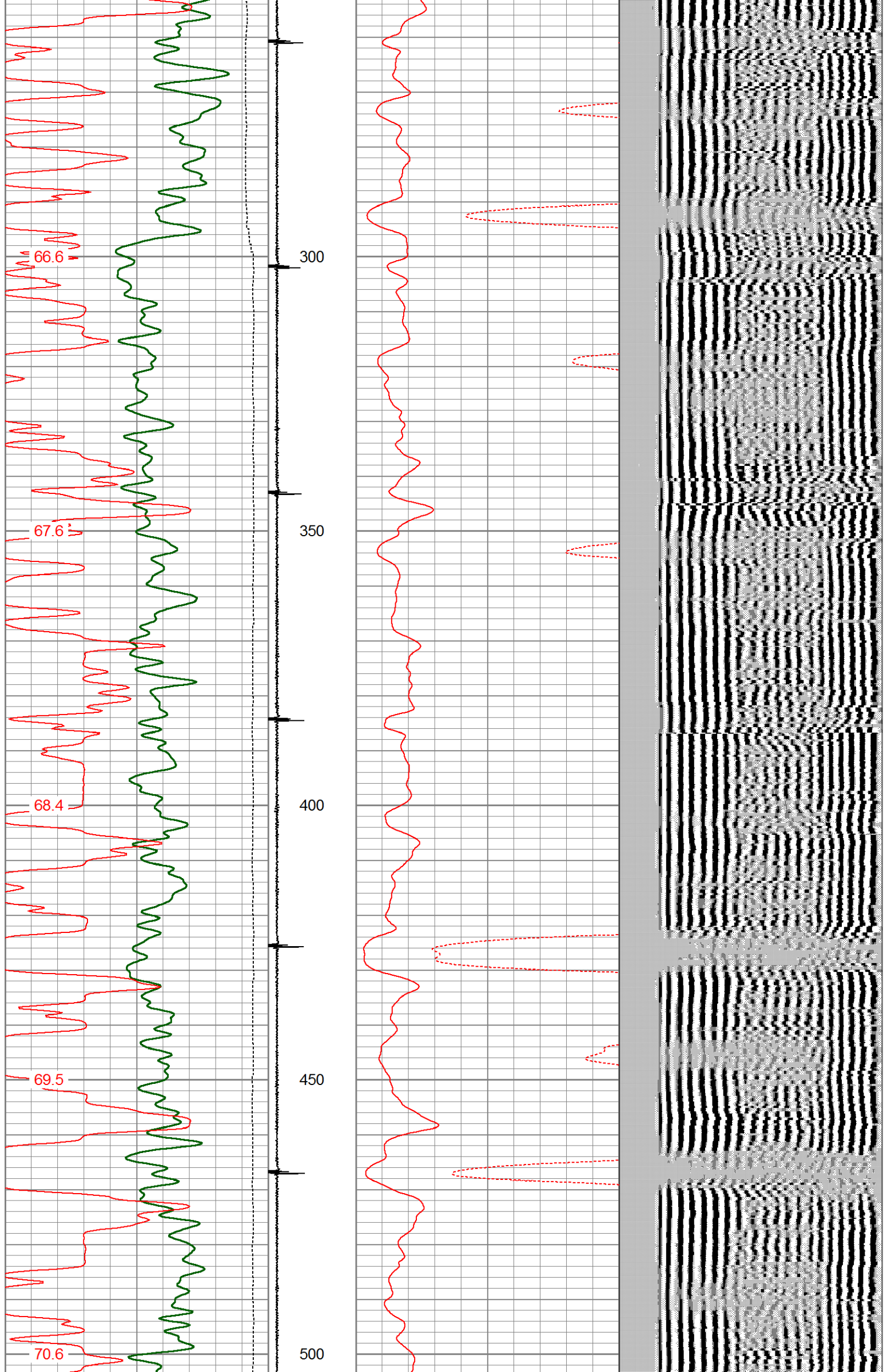
LOG WAS RAN OFF A 13' K.B.  
THANK YOU FOR USING BRAND-X WIRELINE.

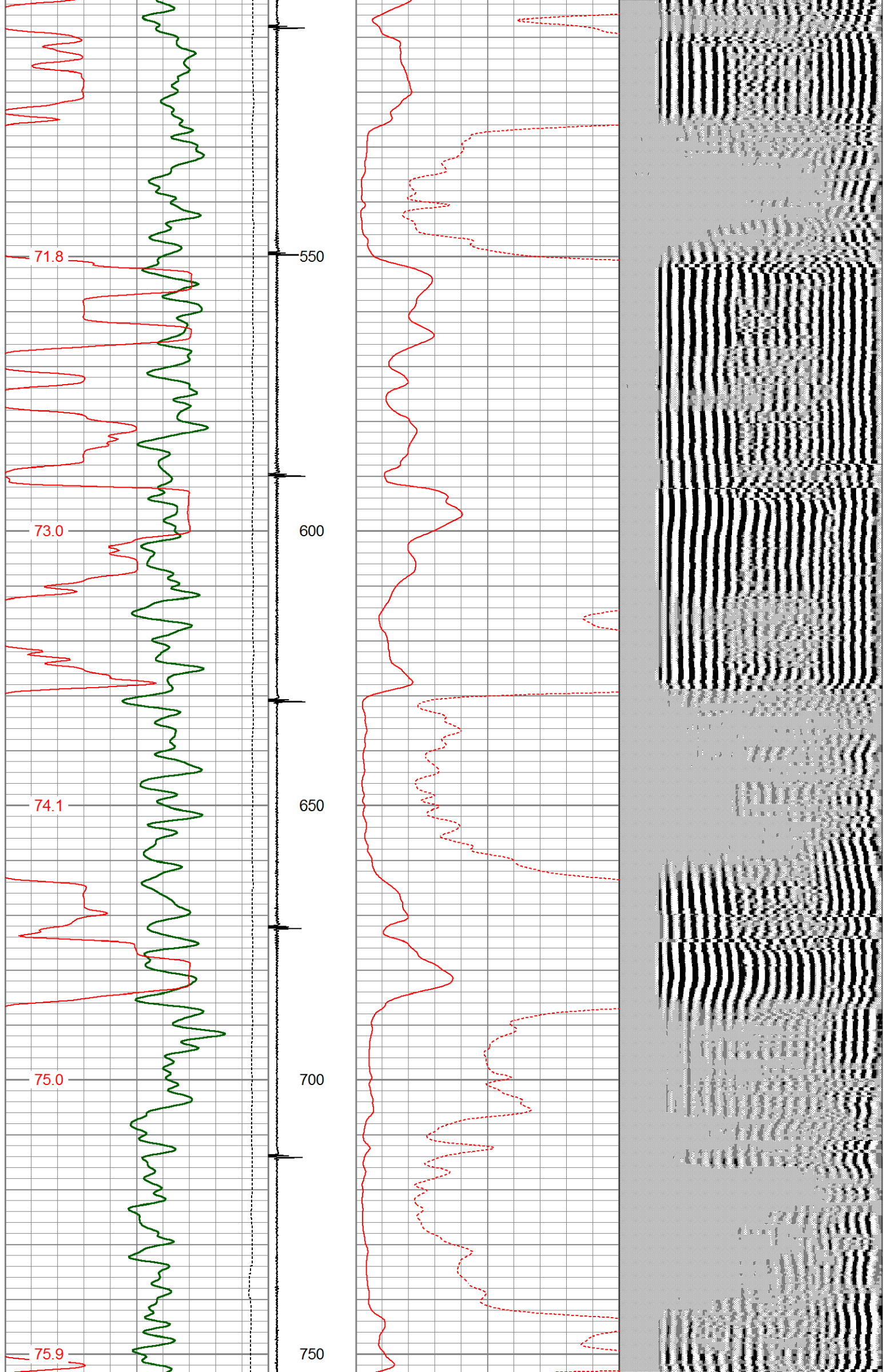
Database File ctpk\_file\_41-17\_cbl.db  
Dataset Pathname pass1  
Presentation Format cbl\_drs  
Dataset Creation Wed Jun 17 12:50:32 2020  
Charted by Depth in Feet scaled 1:240

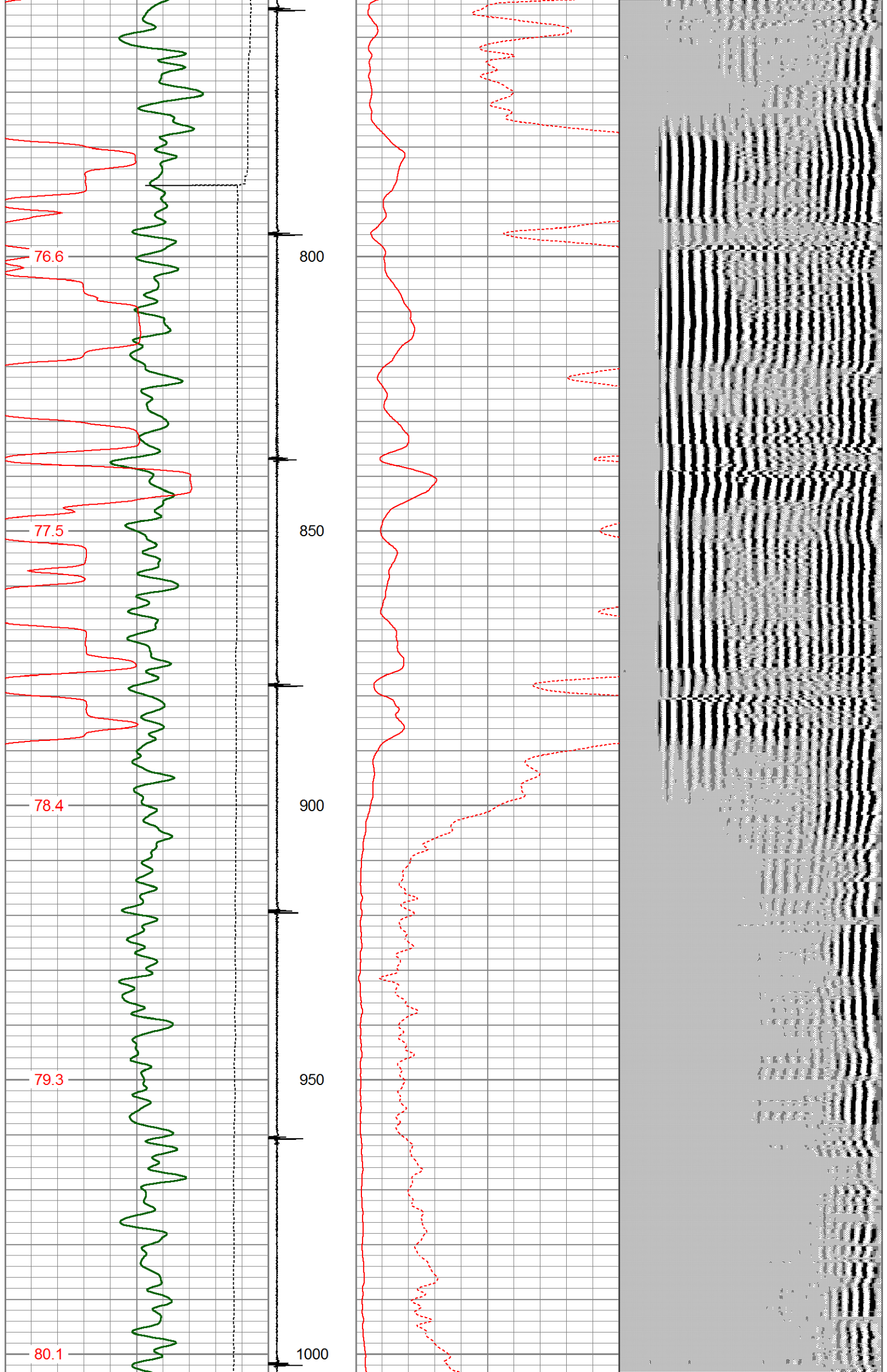
0	Gamma Ray	150	Collar Locato	0	AMP AMPLITUDE (mV)	10	200	VDL (V)	1200
100	Line Speed (ft/min)	-100	-1	9	0	AMPLITUDE (mV)	100		
400	TT3FT (usec)	200							
TEMP	(degF)								

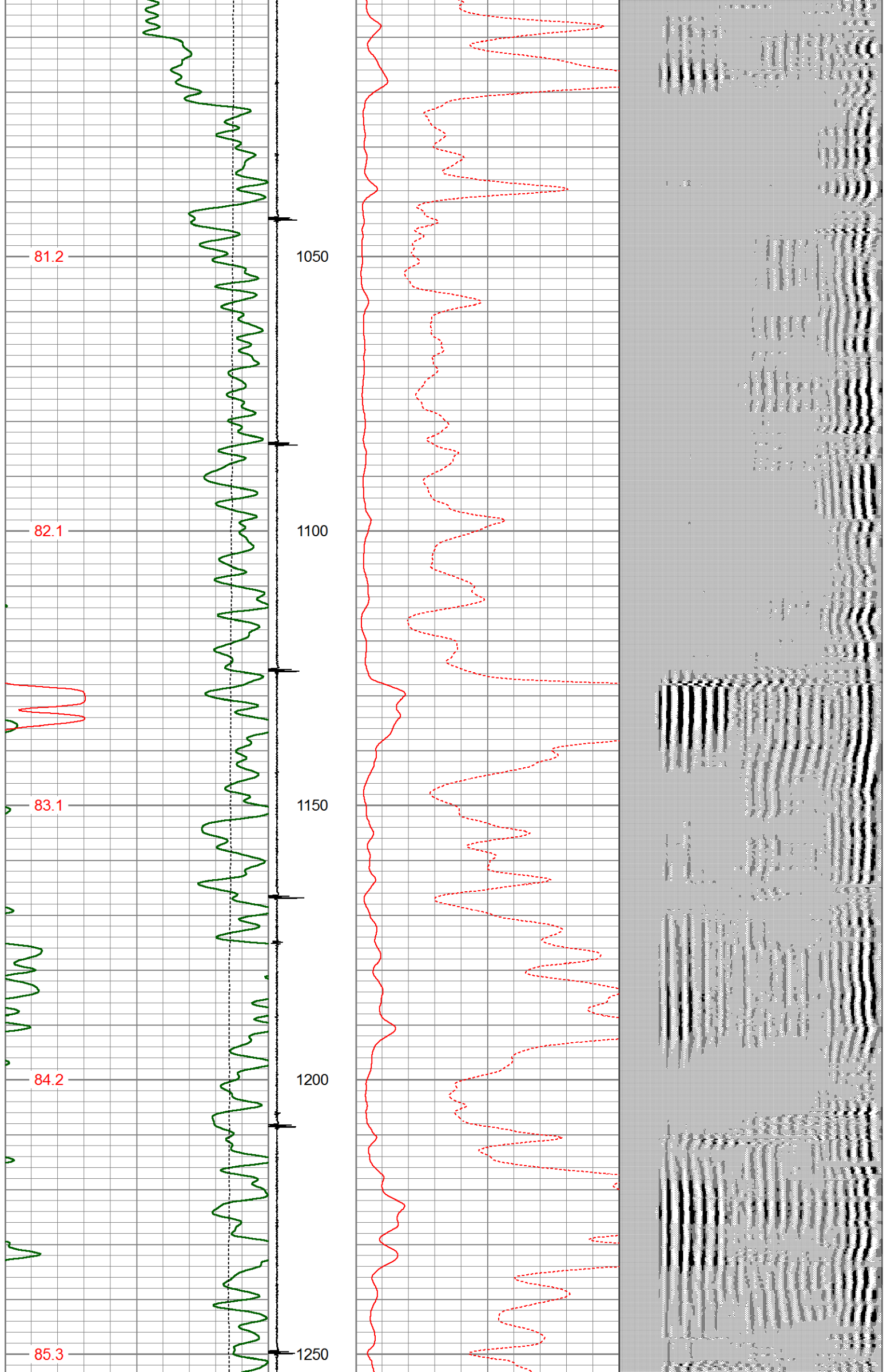


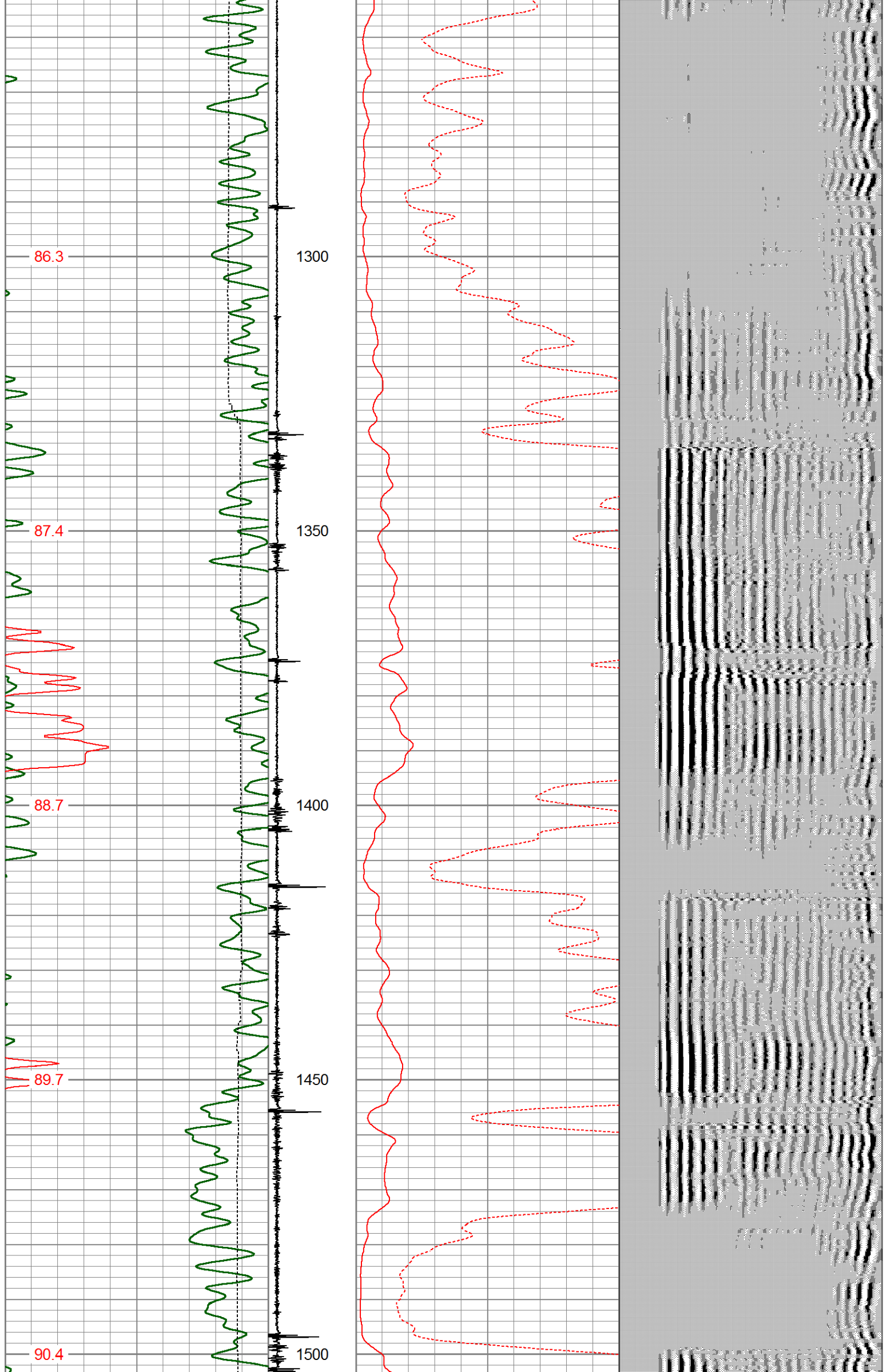


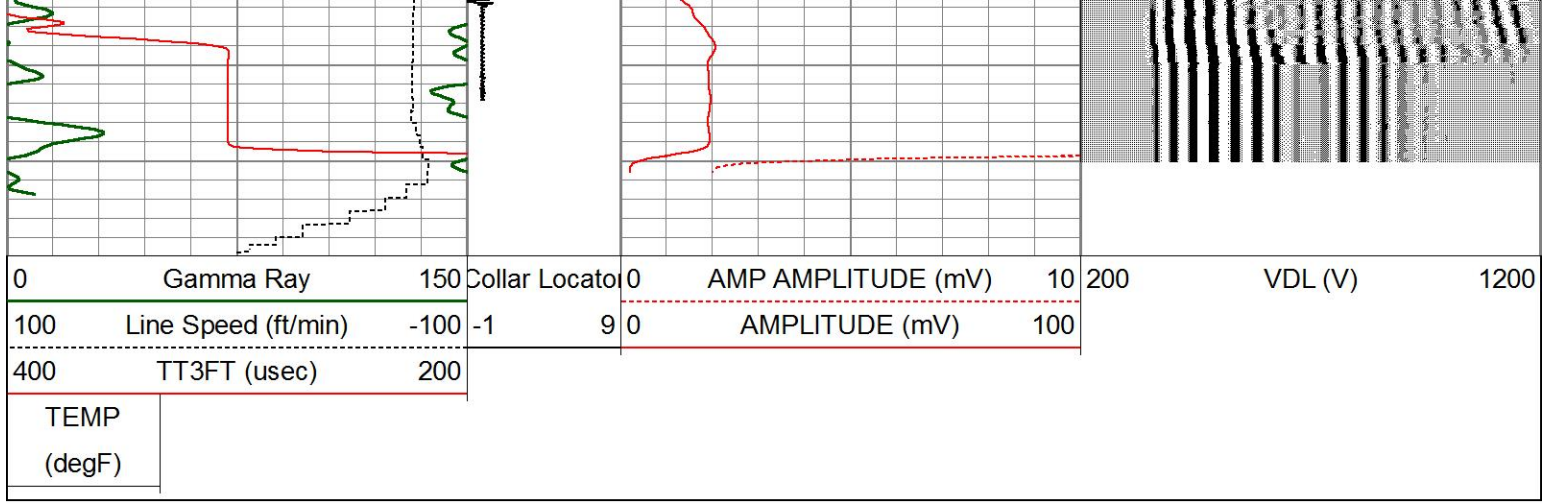












Sensor	Offset (ft)	Schematic	Description	Length (ft)	O.D. (in)	Weight (lb)
			Cable Head-Titan 1 11/16" Titan Cable Head	1.03	1.69	2.00
CCL	16.10		CCL_Logging-275 TekCo_2 (IFRK1-03) 2 3/4"	1.83	2.75	15.00
TEMP	12.67					
WVFS8	11.38					
WVFS7	11.38					
WVFS6	11.38					
WVFS5	11.38					
WVFS4	11.38					
WVFS3	11.38					
WVFS2	11.38					
WVFS1	11.38					
WVF3FT	10.63					
WVF5FT	9.63					
WVFSYNC	6.29					
WVFTEMP	6.29					
WVFCAL	6.29					
			SCBL-275 TekCo w Temp (IU953-01) TekCo 2 3/4" Sector Tool with Temperature	9.13	2.75	102.00
			GR-275 TekCo (IT9K4-01) TekCo 2 3/4" 400 Deg. F Logging Gamma Ray	3.67	2.75	40.00
GR	3.67					



Bullnose-Titan  
GO Pin Pressure Cap

0.27

1.38

1.00

CENT-169  
1 11/16" Centralizer

2.35

1.69

5.00

Dataset: ctpk\_file\_41-17\_cbl.db: field/well/run1/pass1  
Total length: 18.28 ft  
Total weight: 165.00 lb  
O.D.: 2.75 in