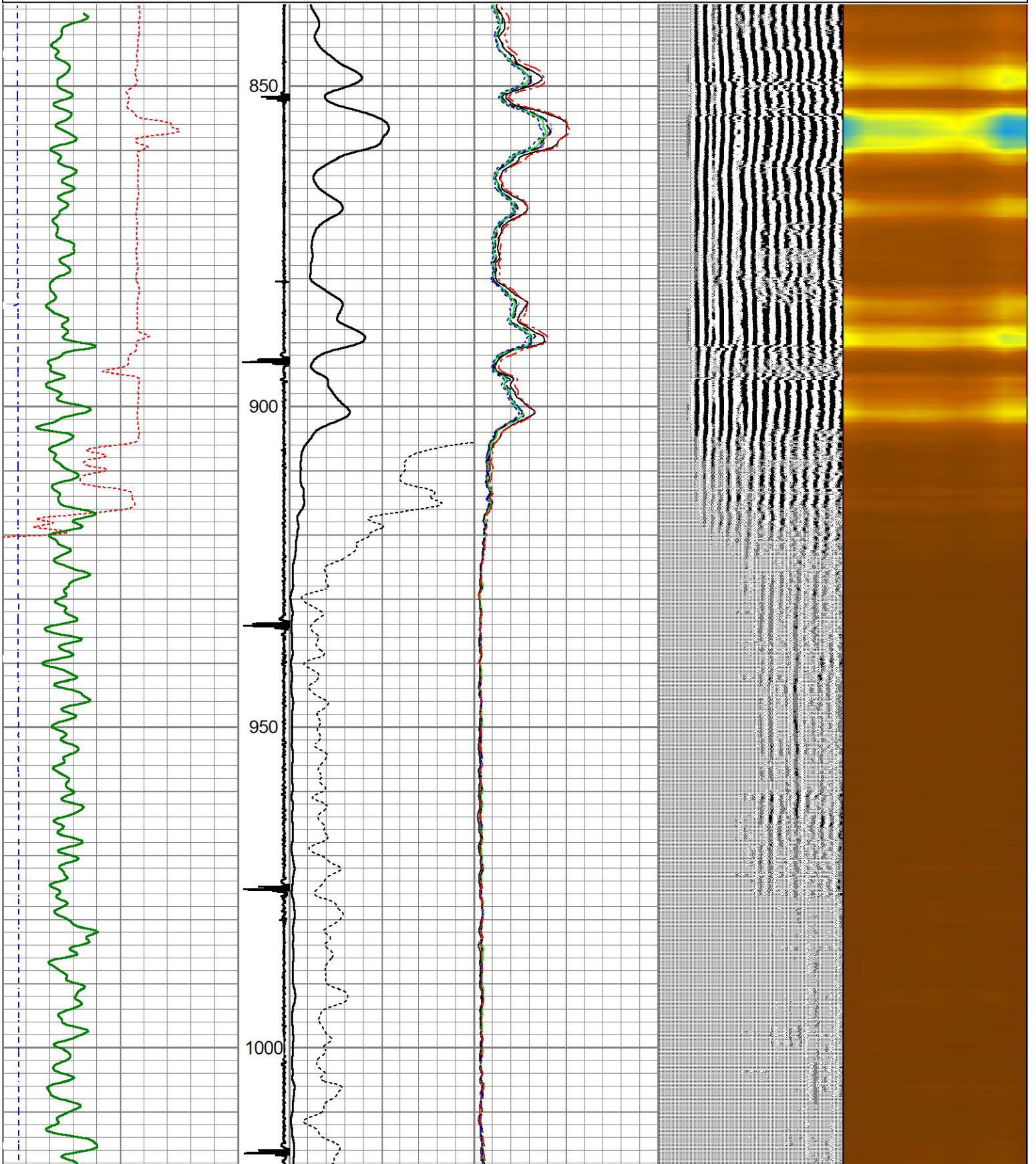
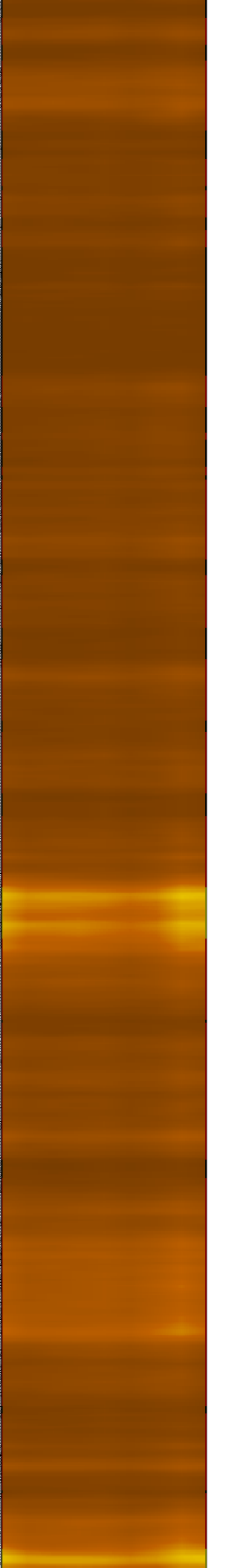
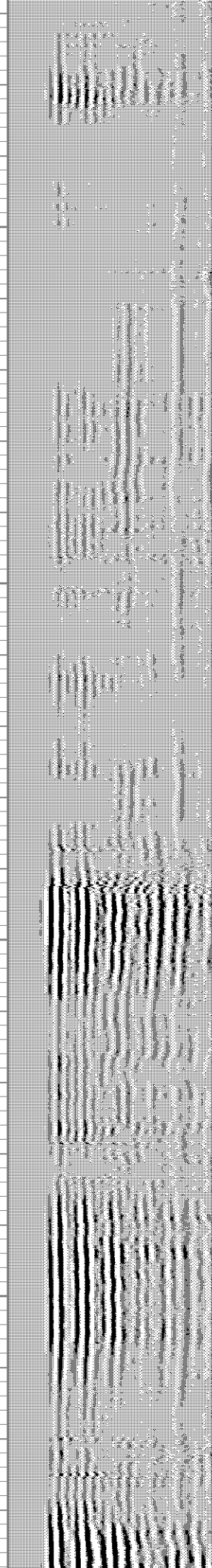
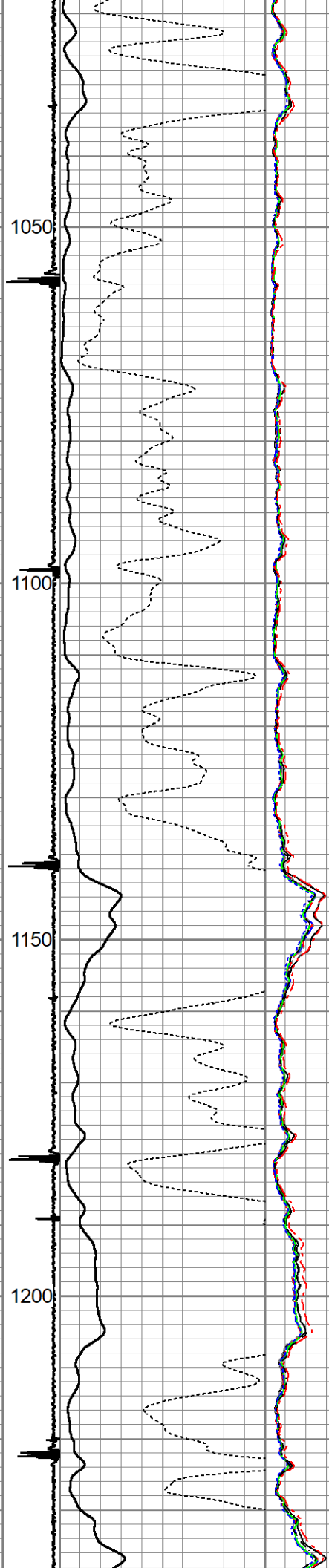
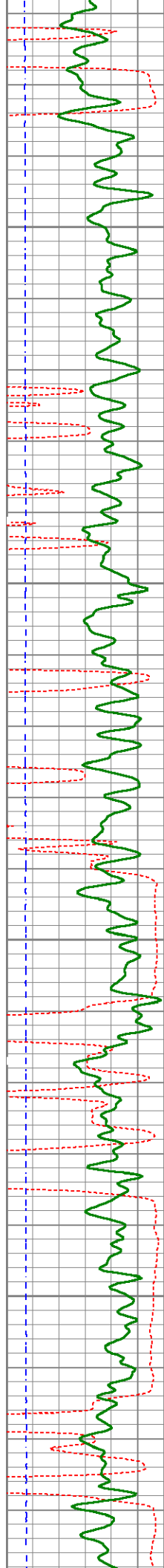
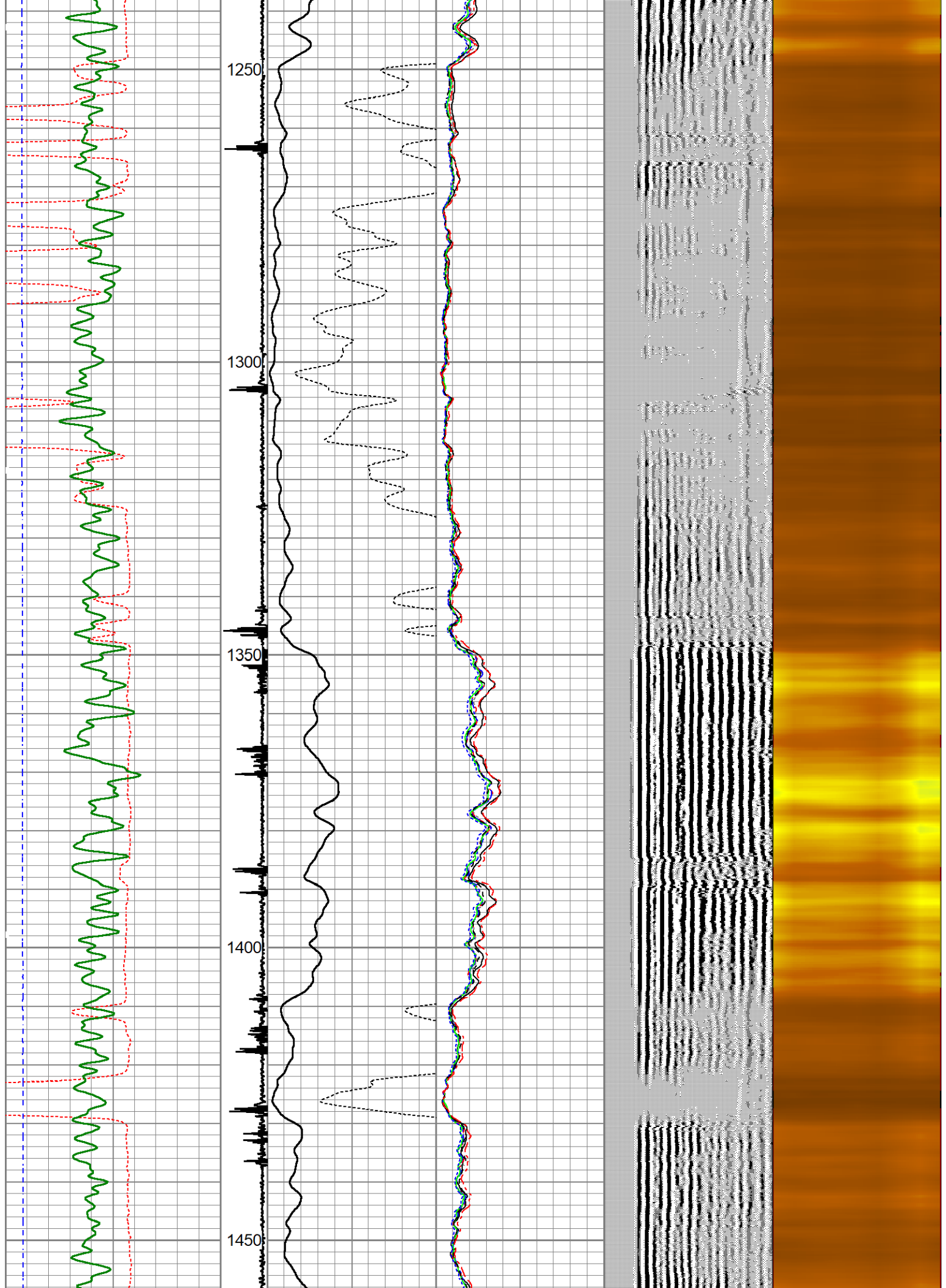
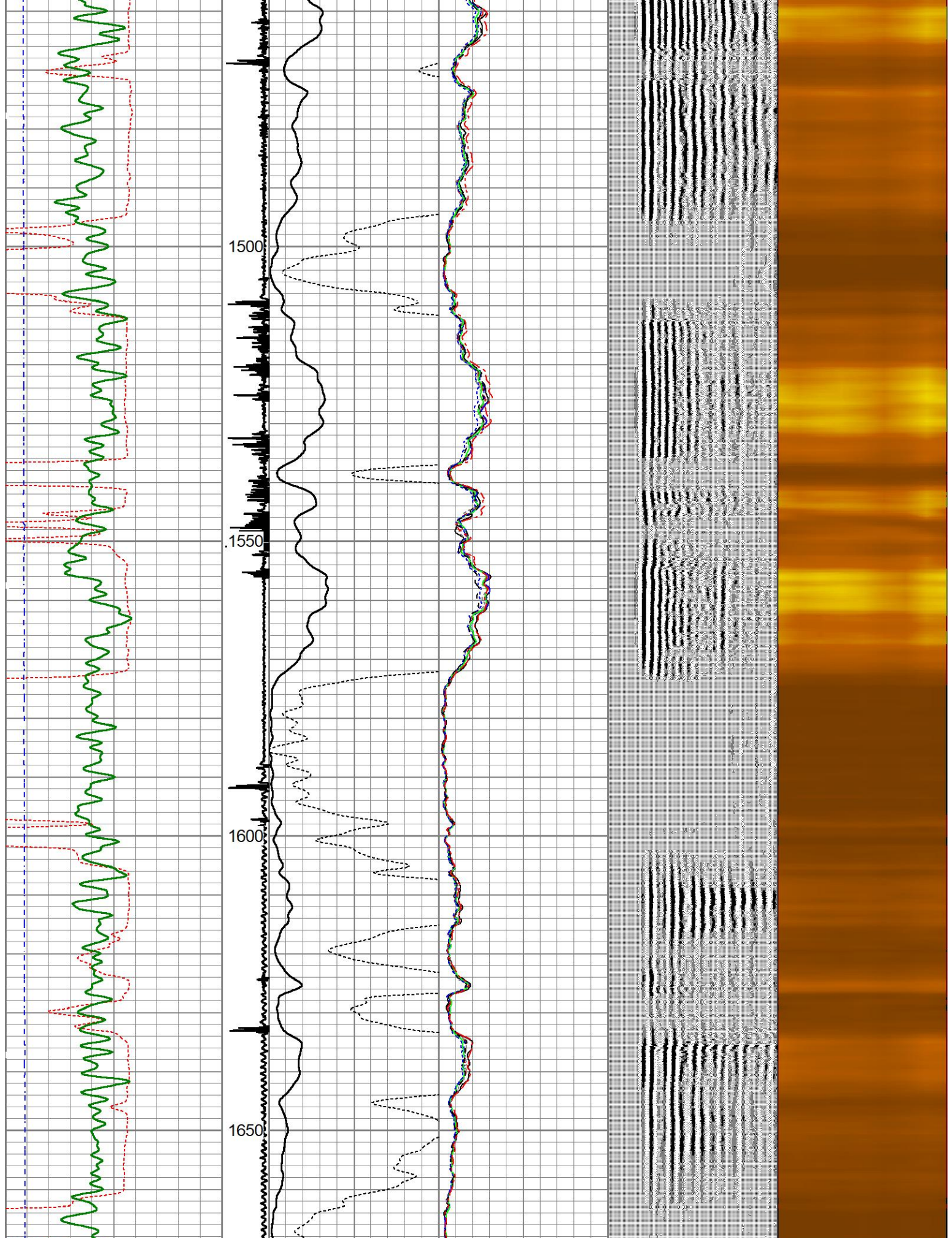


400	Travel Time (usec)	200	ing Co	0	Amplitude (mV)	100	-5	Sector 1	150	Variable Density	1	Cement Map	8
0	Gamma Ray (GAPI)	150	9	-1	Amplified Amplitude	-5	Sector 2	150	200	(usec)	1200		
0	Line Tension (lb)	5000			(mV)	10	-5	Sector 3	150				
							-5	Sector 4	150				
							-5	Sector 5	150				
							-5	Sector 6	150				
							-5	Sector 7	150				
							-5	Sector 8	150				









400	Travel Time (usec)	200	ing Co	0	Amplitude (mV)	100	-5	Sector 1	150	Variable Density	1	Cement Map	8
0	Gamma Ray (GAPI)	150	9	-1	Amplified Amplitude	-5	Sector 2	150	200	(usec)	1200		

0	Line Tension (lb)	5000	0	(mV)	10	-5	Sector 3	150
						-5	Sector 4	150
						-5	Sector 5	150
						-5	Sector 6	150
						-5	Sector 7	150
						-5	Sector 8	150

Sensor	Offset (ft)	Schematic	Description	Length (ft)	O.D. (in)	Weight (lb)	
			CHD-Titan Titan 1 7/16" GO Cablehead	1.00	1.44	5.00	
			CENT-Probe275 2.75" Centralizer	2.33	2.75	36.00	
WVFS8	8.83			RBT-Probe 2.75 Radii (110403) 2 3/4" Probe Radii	8.75	2.75	106.50
WVFS7	8.83						
WVFS6	8.83						
WVFS5	8.83						
WVFS4	8.83						
WVFS3	8.83						
WVFS2	8.83						
WVFS1	8.83						
WVFCAL	8.83						
WV3FT	8.83						
WV5FT	7.83						
HEADVOLT	4.58						
CCL	3.64						
			GR-Probe (FW1211-86) Probe 2.75" 4 Channel Pulse	4.58	2.75	30.00	

GR 0.90



Dataset: ctpk file 41-17 1-11-20.db: field/well/run1/pass2
 Total length: 16.67 ft
 Total weight: 177.50 lb
 O.D.: 2.75 in

Calibration Report

Database File ctpk file 41-17 1-11-20.db
 Dataset Pathname pass2
 Dataset Creation Tue Feb 11 11:15:05 2020

Gamma Ray Calibration Report

Serial Number: FW1211-86
 Tool Model: Probe
 Performed: Mon Feb 03 13:18:32 2014
 Calibrator Value: 1.0 GAPI
 Background Reading: 0.0 cps
 Calibrator Reading: 1.0 cps
 Sensitivity: 0.8000 GAPI/cps

Segmented Cement Bond Log Calibration Report

Serial Number: 110403
 Tool Model: Probe 2.75 Radii
 Calibration Casing Diameter: 7.000 in
 Calibration Depth: -2061.554 ft

Master Calibration, performed Tue Feb 11 11:06:42 2020:

	Raw (v)		Calibrated (mv)		Results	
	Zero	Cal	Zero	Cal	Gain	Offset
3'	0.001	0.474	1.000	81.000	169.352	0.768
CAL	-0.003	0.674				
5'	-0.008	0.393	1.000	62.165	152.624	2.256
SUM						
S1	0.053	0.478	0.000	100.000	235.335	-12.473
S2	0.003	0.447	0.000	100.000	225.272	-0.605
S3	0.004	0.465	0.000	100.000	217.196	-0.923
S4	0.003	0.479	0.000	100.000	210.084	-0.682
S5	-0.001	0.497	0.000	100.000	200.868	0.213
S6	0.003	0.490	0.000	100.000	205.339	-0.649
S7	0.001	0.468	0.000	100.000	214.327	-0.259
S8	0.003	0.450	0.000	100.000	223.501	-0.668

Internal Reference Calibration, performed (Not Performed):

	Raw (v)		Calibrated (v)		Results	
	Zero	Cal	Zero	Cal	Gain	Offset
CAL	0.000	0.000	-0.003	0.674	1.000	0.000

Air Zero Calibration, performed Fri Dec 27 07:52:33 2019:

	Raw (v)	Calibrated (v)	Results
	<u>Zero</u>	<u>Zero</u>	<u>Offset</u>
3'	0.000	0.000	0.000
5'	0.000	0.000	0.000
SUM			
S1	0.000	0.000	0.000
S2	0.000	0.000	0.000
S3	0.000	0.000	0.000
S4	0.000	0.000	0.000
S5	0.000	0.000	0.000
S6	0.000	0.000	0.000
S7	0.000	0.000	0.000
S8	0.000	0.000	0.000