

DSU No. 1
 Township 7 North, Range 66 West, 6th P.M.
 Section 11: All
 Section 12: All

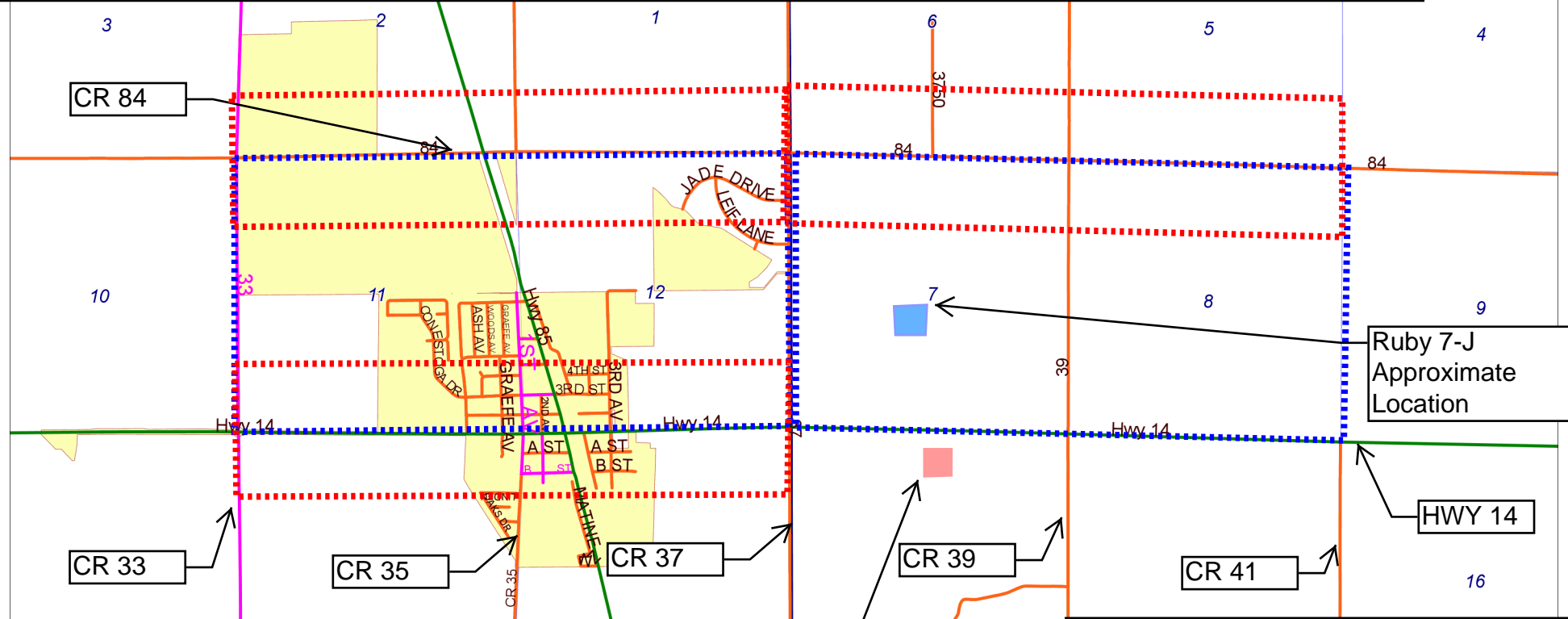
DSU No. 2
 Township 7 North, Range 65 West, 6th P.M.
 Section 7: All
 Section 8: All

WSU No. 3 & 4
 Township 7 North, Range 66 West, 6th P.M.
 Section 11: S¹/₂S¹/₂
 Section 12: S¹/₂S¹/₂
 Section 13: N¹/₂N¹/₂
 Section 14: N¹/₂N¹/₂

WSU No. 5 & 6
 Township 7 North, Range 66 West, 6th P.M.
 Section 1: S¹/₂S¹/₂
 Section 2: S¹/₂S¹/₂
 Section 11: N¹/₂N¹/₂
 Section 12: N¹/₂N¹/₂

WSU No. 7 & 8
 Township 7 North, Range 65 West, 6th P.M.
 Section 5: S¹/₂S¹/₂
 Section 6: S¹/₂S¹/₂
 Section 7: N¹/₂N¹/₂
 Section 8: N¹/₂N¹/₂

33



Ruby 7-J
 Approximate
 Location

HWY 14

East Ault 18-C
 Approximate
 Location

Proposed Drilling and Spacing Unit

Proposed Wellbore Spacing Units

East Ault 18-C Location (approximate)

Proposed Oil and Gas Location (approximate)

6000

Niobrara, Fort Hays, Codell and Carlile Formations
 Wattenberg Field
 Weld County, CO
 Bayswater Exploration & Production, LLC
 Oil and Gas Development Plan Application

Nearby Crossroads: CR 84, CR 33, CR 35, CR 47,
 CR 39, CR 41 and HWY 14