

Inspection Photos

11/19/2021

Operator: TEP ROCKY MOUNTAIN LLC #96850

Location ID: 335541

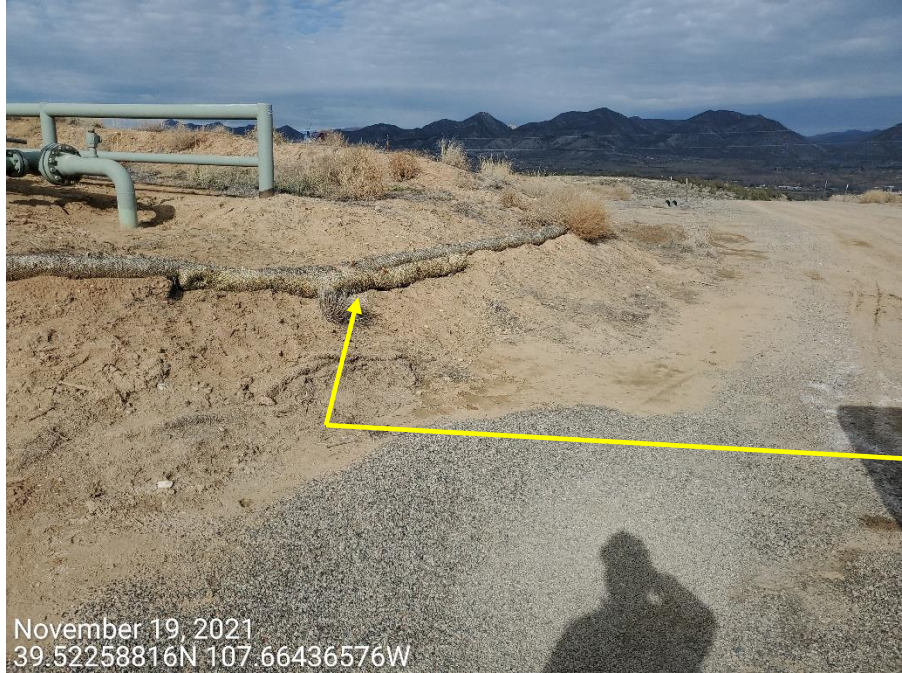
Garfield County, CO

Aaron Trujillo

NW Reclamation Specialist

COGCC

Inspection Photos
Operator Name: TEP ROCKY MOUNTAIN LLC #96850
Location ID: 335541



November 19, 2021
39.52258816N 107.66436576W



November 19, 2021
39.52263549N 107.66440659W

Photo 1: Photos taken from slopes along the west end of the Location. Only work that appears to have been conducted by Operator to address stabilization, erosion and degradation issues at the cut slopes since the previous inspections, is that a second wattle has been installed at this section of the slopes (arrow); stormwater has transported sediment over the wattles; Controls measures to stabilize, and prevent erosion and degradation from the slopes of the Location remain missing or insufficient.

Inspection Photos
Operator Name: TEP ROCKY MOUNTAIN LLC #96850
Location ID: 335541



Photo 2: Photos provide examples showing control measures to address stabilization, erosion and degradation issues at the cut slopes of the Location remains missing or insufficient.

Inspection Photos
Operator Name: TEP ROCKY MOUNTAIN LLC #96850
Location ID: 335541



Photo 3: Photos provide examples showing control measures to address stabilization, erosion and degradation issues at the cut slopes of the Location remains missing or insufficient.

Inspection Photos
Operator Name: TEP ROCKY MOUNTAIN LLC #96850
Location ID: 335541



Photo 4: Photos taken from the production areas. Photos show example of stabilization/tracking issues that remain evident on the Location.

Inspection Photos
Operator Name: TEP ROCKY MOUNTAIN LLC #96850
Location ID: 335541



Photo 4.b: Continued from Photo 4. Photo left shows stabilization/tracking issues observed on the south end of the Location. Photos to the right taken from the same areas during the 12/1/2020 and 5/11/2021 inspections showing. Stabilization/tracking issues on the production areas have not been addressed.



Inspection Photos
Operator Name: TEP ROCKY MOUNTAIN LLC #96850
Location ID: 335541



Photo 5: Photos taken from the production areas. Photos show example of stabilization/tracking issues that remain evident on the Location.

Inspection Photos
Operator Name: TEP ROCKY MOUNTAIN LLC #96850
Location ID: 335541



Photo 6: Photo shows the stormwater outlet on the northwest end of the Location. Control measures to manage stormwater runoff from the production area is inadequate; outlet improperly engineered and not maintained; runoff resulting in degradation at the control, and within ditches at access road.



Inspection Photos

Operator Name: TEP ROCKY MOUNTAIN LLC #96850

Location ID: 335541



Photo 7: Continued from photo 6. Photo shows degradation to the stormwater outlet and ditch. Control has been constructed without geotextile lining, and with smooth stone rather than angular. This has resulted in stormwater accelerating around the rock material and scouring the sides, and channel, of the control measure.

Inspection Photos
Operator Name: TEP ROCKY MOUNTAIN LLC #96850
Location ID: 335541



Photo 8: Photos taken from the access road entrance and County Road 331. Photo right shows off-site sediment transport due to vehicle tracking observed during the 12/1/2020 inspection. Photo left (dated 11/19/2021) shows stabilization and tracking issues have not been addressed, resulting in continued off-site sediment transport onto the county road.

Inspection Photos
Operator Name: TEP ROCKY MOUNTAIN LLC #96850
Location ID: 335541



Photo 9: Continued from photo 8. Photo shows sediment transport onto the county road.