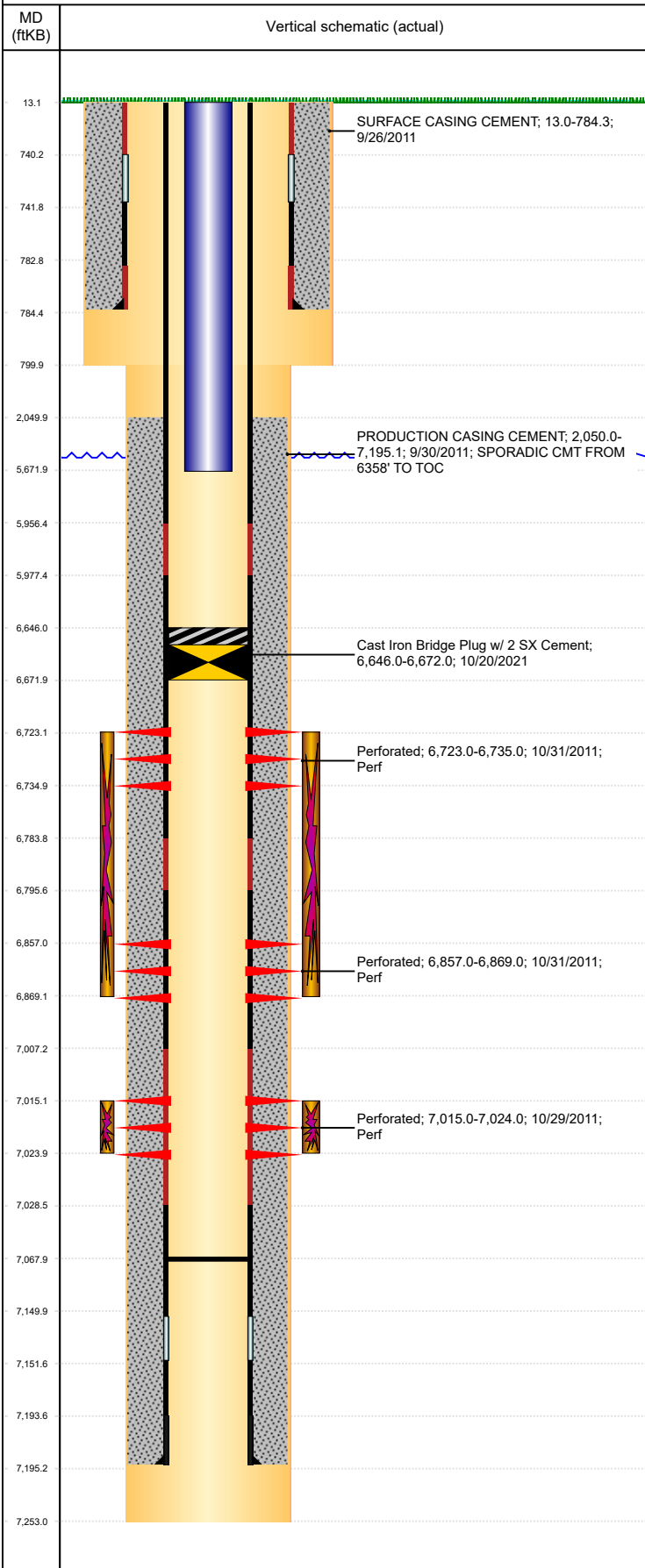


**Well Name: WALCKER AB12-12**

VERTICAL, ORIGINAL HOLE, 11/19/2021 2:11:01 PM



**Well Header**

API 05-123-31709	Business Unit DJ BASIN	District 15	Well Config VERTICAL
KB - GL / MSL (ft... 13.00	Spud Date 9/25/2011	P & A Date	Well Production Status PR
SoRT No			

Comment

**Surface Location (Congressional)**

Qtr 3 NW	Qtr 4 SW	Section 12	Twnshp... 7	Twnsh... N	Range 64	Rng E... W	Actual Latitude (°) 40.58578707	Actual Longitude (°) -104.50454694
-------------	-------------	---------------	----------------	---------------	-------------	---------------	------------------------------------	---------------------------------------

**Wellbore Sections**

Section Des	Size (in)	Act Top, MD (ftKB)	Act Btm, MD (ftKB)
SURFACE	12 1/4	13	800
PRODUCTION	7 7/8	800	7,253

**Casing Strings**

Csg Des	Run Date	OD (in)	Wt/Len (lb/ft)	Grade	Top, MD (ftKB)	MD (ftKB)
Surface	9/26/2011	8 5/8	24.00	J-55	13.0	784.3
Production	9/30/2011	4 1/2	11.60	M-80	13.0	7,195.1

**Cement**

Des	Start Date	Top (ftKB)	Btm (ftKB)
SURFACE CASING CEMENT	9/26/2011	13.0	784.3
PRODUCTION CASING CEMENT	9/30/2011	2,050.0	7,195.1

**Zone Statuses**

Zone Name	Status Date	Status	Fluid Type	Job	Prod Method
NIOBRARA	11/29/2011	PR		DRILLING/COMPLETION - ORIGINAL, 9/25/2011...	
CODELL	11/29/2011	PR		DRILLING/COMPLETION - ORIGINAL, 9/25/2011...	

**Perforation Data**

Linked Zone	Bnch/Stg	Entered Shot Total	Top (ftKB)	Btm (ftKB)	Date
NIOBRARA, ORIGINAL HOLE	A	24	6,723.00	6,735.00	10/31/2011
NIOBRARA, ORIGINAL HOLE	B	24	6,857.00	6,869.00	10/31/2011
CODELL, ORIGINAL HOLE		36	7,015.00	7,024.00	10/29/2011

**Stimulation Intervals**

Zone	Start Date	Top (ftKB)	Btm (ftKB)
NIOBRARA, ORIGINAL HOLE	10/31/2011	6,723.0	6,869.0
CODELL, ORIGINAL HOLE	10/31/2011	7,015.0	7,024.0

**Other In Hole**

Run Date	Des	Make	OD (in)	Top (ftKB)	Btm (ftKB)
10/20/2021	Cast Iron Bridge Plug w/ 2 SX Cement		4	6,646.0	6,672.0

**Logs**

Date	Type	Top, MD (ftKB)	Btm, MD (ftKB)
9/21/2011	Caliper/Comp. Density/Neutron/GR/SP/ML	790.0	7,253.0
9/29/2011	DIL/GR/SP/Caliper	790.0	7,253.0
9/30/2011	INDUCTION	784.0	7,238.0
10/12/2011	CBL/CCL/GR	1,930.0	7,017.0
10/21/2011	CBL/CCL/GR	1,700.0	7,225.0
11/17/2012	GYRO	13.0	7,076.0

**Plug Back Total Depths**

Date	Type	Com	Depth (ftKB)
11/21/2011	PLUG REMNANTS	C/O KILL PLUG AND CFTP DOWN TO 7070' KB (CIBP)	7,070.0
6/5/2014	PLUG REMNANTS	DRILL OUT CBP AND CLEAN DOWN TO 7068' KB.	7,068.0