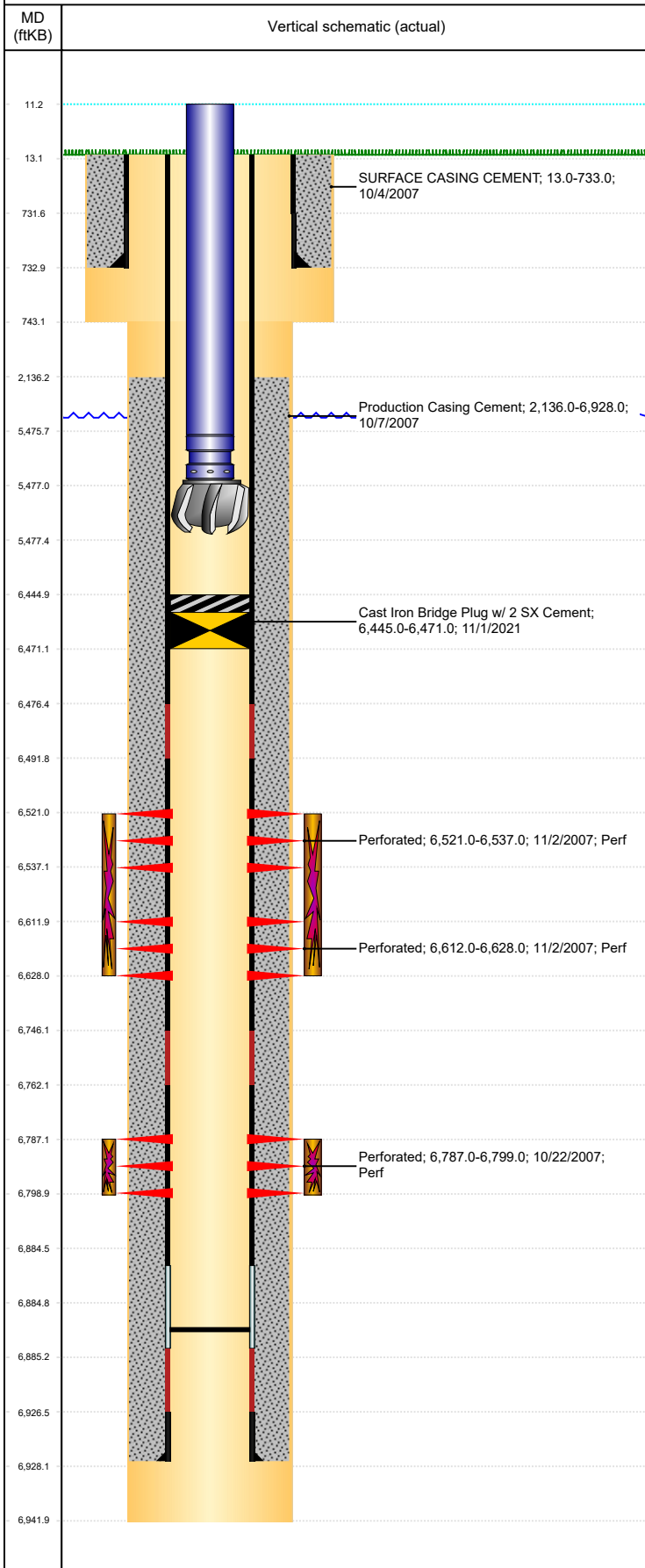


**Well Name: PATRIOT B16-25**

VERTICAL, ORIGINAL HOLE, 11/19/2021 11:07:54 AM



Well Header									
API 05-123-24628		Business Unit DJ BASIN			District 15		Well Config VERTICAL		
KB - GL / MSL (ft... 13.00		Spud Date 10/3/2007		P & A Date		Well Production Status TA			SoRT No
Comment DISCREPANCY: ST RPT TD 6907'; LOGS TD 6942'. STATE SHOWS SHUT IN SINCE AUG 2017.									
Surface Location (Congressional)									
Qtr 3 NE	Qtr 4 SW	Section 16	Twnshp 5	Twnsh... N	Range 64	Rng E/... W	Actual Latitude (°) 40.39610346	Actual Longitude (°) -104.55918784	
Wellbore Sections									
Section Des			Size (in)			Act Top, MD (ftKB)		Act Btm, MD (ftKB)	
SURFACE			12 1/4			13		743	
PRODUCTION			7 7/8			743		6,942	
Casing Strings									
Csg Des			Run Date		OD (in)	Wt/Len (lb/ft)	Grade	Top, MD (ftKB)	MD (ftKB)
Surface			10/4/2007		8 5/8	24.00	J-55	13.0	733.0
Production			10/7/2007		4 1/2	11.60	M-80	13.0	6,928.0
Cement									
Des					Start Date		Top (ftKB)		Btm (ftKB)
SURFACE CASING CEMENT					10/4/2007		13.0		733.0
Production Casing Cement					10/7/2007		2,136.0		6,928.0
Zone Statuses									
Zone Name		Status Date	Status	Fluid Type	Job			Prod Method	
NIOBRARA		11/30/2007	PR		DRILLING/COMPLETION - ORIGINAL, 10/3/2007...			Flowing	
NIOBRARA		11/1/2021	TA		CIBP, 11/1/2021 06:00				
CODELL		11/30/2007	PR		DRILLING/COMPLETION - ORIGINAL, 10/3/2007...			Flowing	
CODELL		11/1/2021	TA		CIBP, 11/1/2021 06:00				
Perforation Data									
Linked Zone			Bnch/Stg	Entered Shot Total	Top (ftKB)		Btm (ftKB)		Date
NIOBRARA, ORIGINAL HOLE				56	6,521.00		6,537.00		11/2/2007
NIOBRARA, ORIGINAL HOLE				64	6,612.00		6,628.00		11/2/2007
CODELL, ORIGINAL HOLE				48	6,787.00		6,799.00		10/22/2007
Stimulation Intervals									
Zone					Start Date		Top (ftKB)		Btm (ftKB)
NIOBRARA, ORIGINAL HOLE					11/2/2007		6,521.0		6,628.0
CODELL, ORIGINAL HOLE					11/2/2007		6,787.0		6,799.0
Other In Hole									
Run Date		Des			Make		OD (in)	Top (ftKB)	Btm (ftKB)
11/1/2021		Cast Iron Bridge Plug w/ 2 SX Cement					4	6,445.0	6,471.0
Logs									
Date		Type					Top, MD (ftKB)		Btm, MD (ftKB)
10/6/2007		COMPENSATED DENSITY					2,500.0		6,922.0
10/6/2007		INDUCTION					700.0		6,942.0
10/18/2007		CEMENT BOND					1,900.0		6,878.0
Plug Back Total Depths									
Date		Type			Com				Depth (ftKB)
10/18/2007		FILL			DEPTH LOGGER ON CBL				6,878.0
2/25/2008		FILL			C/O				6,885.0