

VERDAD RESOURCES

WATTENBERG FIELD

9N-60W-25 PEGGY 2525 PAD

PEGGY 2525-02H

Plan B

Plan: Design #1

Standard Planning Report

13 November, 2021

Project: WATTENBERG FIELD
Site: 9N-60W-25 PEGGY 2525 PAD
Well: PEGGY 2525-02H
Wellbore: Plan B
Design: Design #1

VERDAD RESOURCES

CASING DETAILS

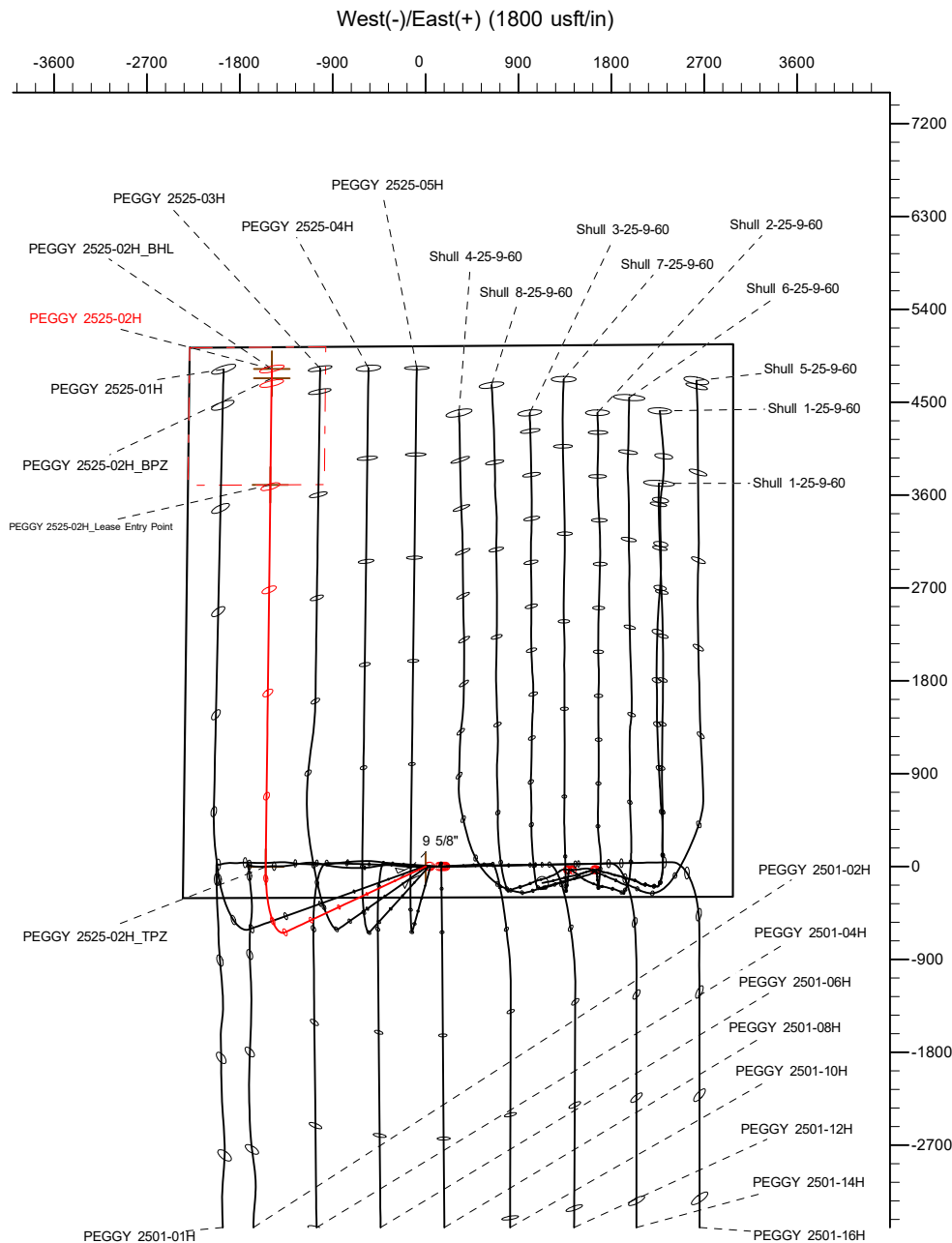
TVD	MD	Name	Size
1575.00	1609.81	9 5/8"	9-5/8

SECTION DETAILS

Sec	MD	Inc	Azi	TVD	+N/-S	+E/-W	Dleg	TFace	VSec	Target
1	0.00	0.00	0.00	0.00	0.00	0.00	0.00	0.00	0.00	
2	270.00	0.00	0.00	270.00	0.00	0.00	0.00	0.00	0.00	
3	1140.00	17.40	244.91	1126.69	-55.59	-118.72	2.00	244.91	-57.06	
4	5730.94	17.40	244.91	5507.55	-637.75	-1362.06	0.00	0.00	-654.57	
5	6814.04	90.00	0.71	6200.00	-4.16	-1549.57	9.00	114.77	-23.36	
6	11641.06	90.00	0.71	6200.00	4822.48	-1489.61	0.00	0.00	4803.66	PEGGY 2525-02H_BHL

WELLBORE TARGET DETAILS (LAT/LONG)

Name	MD	TVD	+N/-S	+E/-W	Latitude	Longitude
PEGGY 2525-02H_SHL	0.00	0.00	0.00	0.00	40.714776	-104.041075
PEGGY 2525-02H_TPZ	6814.04	6200.00	-4.16	-1549.57	40.714764	-104.046665
PEGGY 2525-02H_Lease Entry Point	10516.80	6200.00	3698.31	-1503.58	40.724927	-104.046500
PEGGY 2525-02H_BPZ	11551.06	6200.00	4732.49	-1490.73	40.727766	-104.046454
PEGGY 2525-02H_BHL	11641.06	6200.00	4822.48	-1489.61	40.728013	-104.046449



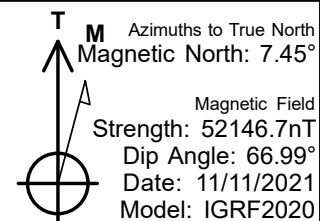
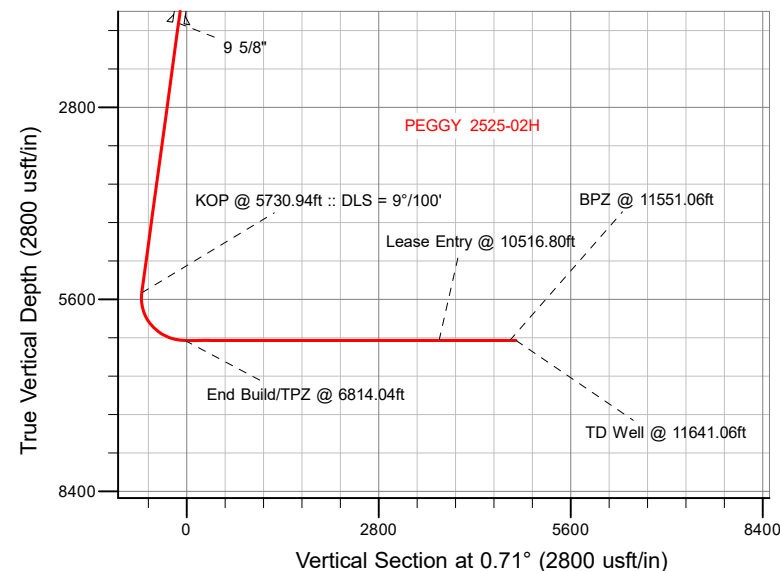
SHL
301' FSL
2347' FWL

TPZ
300' FSL
798' FWL

LEASE ENTRY
1334' FNL
798' FWL

BPZ
300' FNL
798' FWL

BHL
210' FNL
798' FWL



WELL DETAILS: PEGGY 2525-02H

GL = 4894'

RKB = 20' @ 4914.00usft (RIG)

Plan: Design #1 (PEGGY 2525-02H/Plan B)

Date: 11/13/2021

Planning Report

Database:	EDM 5000.16 Single User Db	Local Co-ordinate Reference:	Well PEGGY 2525-02H
Company:	VERDAD RESOURCES	TVD Reference:	RKB = 20' @ 4914.00usft (RIG)
Project:	WATTENBERG FIELD	MD Reference:	RKB = 20' @ 4914.00usft (RIG)
Site:	9N-60W-25 PEGGY 2525 PAD	North Reference:	True
Well:	PEGGY 2525-02H	Survey Calculation Method:	Minimum Curvature
Wellbore:	Plan B		
Design:	Design #1		

Project	WATTENBERG FIELD		
Map System:	US State Plane 1983	System Datum:	Mean Sea Level
Geo Datum:	North American Datum 1983		
Map Zone:	Colorado Northern Zone		

Site		9N-60W-25 PEGGY 2525 PAD			
Site Position:		Northing:	1,511,260.26 usft	Latitude:	40.727757
From:	Lat/Long	Easting:	3,402,379.40 usft	Longitude:	-104.048161
Position Uncertainty:		0.00 usft	Slot Radius:	13-3/16 "	

Well		PEGGY 2525-02H				
Well Position	+N/-S	0.00 usft	Northing:	1,506,563.85 usft	Latitude:	40.714776
	+E/-W	0.00 usft	Easting:	3,404,420.75 usft	Longitude:	-104.041075
Position Uncertainty		3.28 usft	Wellhead Elevation:	usft	Ground Level:	4,894.00 usft
Grid Convergence:		0.94 °				

Wellbore	Plan B				
Magnetics	Model Name	Sample Date	Declination (°)	Dip Angle (°)	Field Strength (nT)
	IGRF202013	11/11/2021	7.45	66.99	52,146.68212459

Design	Design #1				
Audit Notes:					
Version:		Phase:	PLAN	Tie On Depth:	0.00
Vertical Section:	Depth From (TVD) (usft)	+N/-S (usft)	+E/-W (usft)	Direction (°)	
	0.00	0.00	0.00	0.71	

Plan Survey Tool Program	Date	11/13/2021			
Depth From (usft)	Depth To (usft)	Survey (Wellbore)	Tool Name	Remarks	
1	0.00	1,575.00	Design #1 (Plan B)	ISCWSA MWD	
				Fixed:v2:standard declination	
2	1,575.00	11,641.06	Design #1 (Plan B)	ISCWSA MWD	
				Fixed:v2:standard declination	

Planning Report

Database:	EDM 5000.16 Single User Db	Local Co-ordinate Reference:	Well PEGGY 2525-02H
Company:	VERDAD RESOURCES	TVD Reference:	RKB = 20' @ 4914.00usft (RIG)
Project:	WATTENBERG FIELD	MD Reference:	RKB = 20' @ 4914.00usft (RIG)
Site:	9N-60W-25 PEGGY 2525 PAD	North Reference:	True
Well:	PEGGY 2525-02H	Survey Calculation Method:	Minimum Curvature
Wellbore:	Plan B		
Design:	Design #1		

Plan Sections										
Measured Depth (usft)	Inclination (°)	Azimuth (°)	Vertical Depth (usft)	+N/-S (usft)	+E/-W (usft)	Dogleg Rate (°/100usft)	Build Rate (°/100usft)	Turn Rate (°/100usft)	TFO (°)	Target
0.00	0.00	0.00	0.00	0.00	0.00	0.00	0.00	0.00	0.00	
270.00	0.00	0.00	270.00	0.00	0.00	0.00	0.00	0.00	0.00	
1,140.00	17.40	244.91	1,126.69	-55.59	-118.72	2.00	2.00	0.00	244.91	
5,730.94	17.40	244.91	5,507.55	-637.75	-1,362.06	0.00	0.00	0.00	0.00	
6,814.04	90.00	0.71	6,200.00	-4.16	-1,549.57	9.00	6.70	10.69	114.77	
11,641.06	90.00	0.71	6,200.00	4,822.48	-1,489.61	0.00	0.00	0.00	0.00	PEGGY 2525-02H_BI

Planning Report

Database:	EDM 5000.16 Single User Db	Local Co-ordinate Reference:	Well PEGGY 2525-02H
Company:	VERDAD RESOURCES	TVD Reference:	RKB = 20' @ 4914.00usft (RIG)
Project:	WATTENBERG FIELD	MD Reference:	RKB = 20' @ 4914.00usft (RIG)
Site:	9N-60W-25 PEGGY 2525 PAD	North Reference:	True
Well:	PEGGY 2525-02H	Survey Calculation Method:	Minimum Curvature
Wellbore:	Plan B		
Design:	Design #1		

Planned Survey									
Measured Depth (usft)	Inclination (°)	Azimuth (°)	Vertical Depth (usft)	+N/-S (usft)	+E/-W (usft)	Vertical Section (usft)	Dogleg Rate (°/100usft)	Build Rate (°/100usft)	Turn Rate (°/100usft)
0.00	0.00	0.00	0.00	0.00	0.00	0.00	0.00	0.00	0.00
100.00	0.00	0.00	100.00	0.00	0.00	0.00	0.00	0.00	0.00
200.00	0.00	0.00	200.00	0.00	0.00	0.00	0.00	0.00	0.00
270.00	0.00	0.00	270.00	0.00	0.00	0.00	0.00	0.00	0.00
Begin Nudge @ 270.00ft									
300.00	0.60	244.91	300.00	-0.07	-0.14	-0.07	2.00	2.00	0.00
400.00	2.60	244.91	399.96	-1.25	-2.67	-1.28	2.00	2.00	0.00
500.00	4.60	244.91	499.75	-3.91	-8.36	-4.02	2.00	2.00	0.00
600.00	6.60	244.91	599.27	-8.05	-17.19	-8.26	2.00	2.00	0.00
700.00	8.60	244.91	698.39	-13.66	-29.17	-14.02	2.00	2.00	0.00
800.00	10.60	244.91	796.98	-20.73	-44.27	-21.28	2.00	2.00	0.00
900.00	12.60	244.91	894.93	-29.26	-62.48	-30.03	2.00	2.00	0.00
1,000.00	14.60	244.91	992.13	-39.23	-83.78	-40.26	2.00	2.00	0.00
1,100.00	16.60	244.91	1,088.44	-50.63	-108.13	-51.97	2.00	2.00	0.00
1,140.00	17.40	244.91	1,126.69	-55.59	-118.72	-57.06	2.00	2.00	0.00
Hold Tangent @ 1140.00ft									
1,200.00	17.40	244.91	1,183.94	-63.20	-134.97	-64.86	0.00	0.00	0.00
1,300.00	17.40	244.91	1,279.37	-75.88	-162.05	-77.88	0.00	0.00	0.00
1,400.00	17.40	244.91	1,374.79	-88.56	-189.14	-90.89	0.00	0.00	0.00
1,500.00	17.40	244.91	1,470.22	-101.24	-216.22	-103.91	0.00	0.00	0.00
1,600.00	17.40	244.91	1,565.64	-113.92	-243.30	-116.93	0.00	0.00	0.00
1,609.81	17.40	244.91	1,575.00	-115.16	-245.96	-118.20	0.00	0.00	0.00
9 5/8"									
1,700.00	17.40	244.91	1,661.06	-126.60	-270.38	-129.94	0.00	0.00	0.00
1,800.00	17.40	244.91	1,756.49	-139.28	-297.47	-142.96	0.00	0.00	0.00
1,900.00	17.40	244.91	1,851.91	-151.96	-324.55	-155.97	0.00	0.00	0.00
2,000.00	17.40	244.91	1,947.34	-164.64	-351.63	-168.99	0.00	0.00	0.00
2,100.00	17.40	244.91	2,042.76	-177.32	-378.71	-182.00	0.00	0.00	0.00
2,200.00	17.40	244.91	2,138.18	-190.00	-405.80	-195.02	0.00	0.00	0.00
2,300.00	17.40	244.91	2,233.61	-202.68	-432.88	-208.03	0.00	0.00	0.00
2,400.00	17.40	244.91	2,329.03	-215.36	-459.96	-221.05	0.00	0.00	0.00
2,500.00	17.40	244.91	2,424.46	-228.04	-487.04	-234.06	0.00	0.00	0.00
2,600.00	17.40	244.91	2,519.88	-240.72	-514.13	-247.08	0.00	0.00	0.00
2,700.00	17.40	244.91	2,615.30	-253.41	-541.21	-260.09	0.00	0.00	0.00
2,800.00	17.40	244.91	2,710.73	-266.09	-568.29	-273.11	0.00	0.00	0.00
2,900.00	17.40	244.91	2,806.15	-278.77	-595.37	-286.12	0.00	0.00	0.00
3,000.00	17.40	244.91	2,901.58	-291.45	-622.46	-299.14	0.00	0.00	0.00
3,100.00	17.40	244.91	2,997.00	-304.13	-649.54	-312.15	0.00	0.00	0.00
3,200.00	17.40	244.91	3,092.42	-316.81	-676.62	-325.17	0.00	0.00	0.00
3,300.00	17.40	244.91	3,187.85	-329.49	-703.70	-338.18	0.00	0.00	0.00
3,400.00	17.40	244.91	3,283.27	-342.17	-730.78	-351.20	0.00	0.00	0.00
3,500.00	17.40	244.91	3,378.70	-354.85	-757.87	-364.21	0.00	0.00	0.00
3,600.00	17.40	244.91	3,474.12	-367.53	-784.95	-377.23	0.00	0.00	0.00
3,700.00	17.40	244.91	3,569.54	-380.21	-812.03	-390.24	0.00	0.00	0.00
3,800.00	17.40	244.91	3,664.97	-392.89	-839.11	-403.26	0.00	0.00	0.00
3,900.00	17.40	244.91	3,760.39	-405.57	-866.20	-416.27	0.00	0.00	0.00
4,000.00	17.40	244.91	3,855.82	-418.25	-893.28	-429.29	0.00	0.00	0.00
4,100.00	17.40	244.91	3,951.24	-430.93	-920.36	-442.30	0.00	0.00	0.00
4,200.00	17.40	244.91	4,046.66	-443.61	-947.44	-455.32	0.00	0.00	0.00
4,300.00	17.40	244.91	4,142.09	-456.29	-974.53	-468.34	0.00	0.00	0.00
4,400.00	17.40	244.91	4,237.51	-468.97	-1,001.61	-481.35	0.00	0.00	0.00
4,500.00	17.40	244.91	4,332.94	-481.66	-1,028.69	-494.37	0.00	0.00	0.00
4,600.00	17.40	244.91	4,428.36	-494.34	-1,055.77	-507.38	0.00	0.00	0.00

Planning Report

Database:	EDM 5000.16 Single User Db	Local Co-ordinate Reference:	Well PEGGY 2525-02H
Company:	VERDAD RESOURCES	TVD Reference:	RKB = 20' @ 4914.00usft (RIG)
Project:	WATTENBERG FIELD	MD Reference:	RKB = 20' @ 4914.00usft (RIG)
Site:	9N-60W-25 PEGGY 2525 PAD	North Reference:	True
Well:	PEGGY 2525-02H	Survey Calculation Method:	Minimum Curvature
Wellbore:	Plan B		
Design:	Design #1		

Planned Survey									
Measured Depth (usft)	Inclination (°)	Azimuth (°)	Vertical Depth (usft)	+N/-S (usft)	+E/-W (usft)	Vertical Section (usft)	Dogleg Rate (°/100usft)	Build Rate (°/100usft)	Turn Rate (°/100usft)
4,700.00	17.40	244.91	4,523.78	-507.02	-1,082.86	-520.40	0.00	0.00	0.00
4,800.00	17.40	244.91	4,619.21	-519.70	-1,109.94	-533.41	0.00	0.00	0.00
4,900.00	17.40	244.91	4,714.63	-532.38	-1,137.02	-546.43	0.00	0.00	0.00
5,000.00	17.40	244.91	4,810.06	-545.06	-1,164.10	-559.44	0.00	0.00	0.00
5,100.00	17.40	244.91	4,905.48	-557.74	-1,191.19	-572.46	0.00	0.00	0.00
5,200.00	17.40	244.91	5,000.90	-570.42	-1,218.27	-585.47	0.00	0.00	0.00
5,300.00	17.40	244.91	5,096.33	-583.10	-1,245.35	-598.49	0.00	0.00	0.00
5,400.00	17.40	244.91	5,191.75	-595.78	-1,272.43	-611.50	0.00	0.00	0.00
5,500.00	17.40	244.91	5,287.18	-608.46	-1,299.52	-624.52	0.00	0.00	0.00
5,600.00	17.40	244.91	5,382.60	-621.14	-1,326.60	-637.53	0.00	0.00	0.00
5,700.00	17.40	244.91	5,478.02	-633.82	-1,353.68	-650.55	0.00	0.00	0.00
5,730.94	17.40	244.91	5,507.55	-637.75	-1,362.06	-654.57	0.00	0.00	0.00
KOP @ 5730.94ft :: DLS = 9°/100'									
5,750.00	16.75	250.32	5,525.77	-639.88	-1,367.23	-656.77	9.00	-3.40	28.39
5,800.00	15.81	266.07	5,573.79	-642.77	-1,380.81	-659.83	9.00	-1.89	31.49
5,850.00	16.08	282.48	5,621.89	-641.74	-1,394.37	-658.97	9.00	0.54	32.81
5,900.00	17.51	297.29	5,669.78	-636.80	-1,407.82	-654.19	9.00	2.87	29.63
5,950.00	19.85	309.33	5,717.16	-627.96	-1,421.08	-645.53	9.00	4.69	24.07
6,000.00	22.83	318.63	5,763.74	-615.30	-1,434.07	-633.02	9.00	5.95	18.61
6,050.00	26.22	325.77	5,809.23	-598.88	-1,446.70	-616.76	9.00	6.79	14.28
6,100.00	29.89	331.32	5,853.35	-578.80	-1,458.90	-596.83	9.00	7.34	11.10
6,150.00	33.75	335.73	5,895.84	-555.20	-1,470.59	-573.38	9.00	7.71	8.83
6,200.00	37.73	339.33	5,936.42	-528.21	-1,481.71	-546.53	9.00	7.96	7.19
6,250.00	41.80	342.32	5,974.85	-498.00	-1,492.18	-516.45	9.00	8.15	5.99
6,300.00	45.94	344.87	6,010.88	-464.77	-1,501.93	-483.34	9.00	8.28	5.10
6,350.00	50.13	347.08	6,044.31	-428.70	-1,510.92	-447.39	9.00	8.38	4.43
6,400.00	54.36	349.04	6,074.92	-390.03	-1,519.07	-408.83	9.00	8.45	3.91
6,450.00	58.61	350.80	6,102.53	-349.00	-1,526.35	-367.89	9.00	8.51	3.52
6,500.00	62.89	352.41	6,126.95	-305.85	-1,532.71	-324.82	9.00	8.55	3.21
6,550.00	67.18	353.89	6,148.05	-260.86	-1,538.10	-279.90	9.00	8.59	2.98
6,600.00	71.49	355.29	6,165.69	-214.30	-1,542.50	-233.39	9.00	8.61	2.79
6,650.00	75.80	356.62	6,179.77	-166.45	-1,545.88	-185.59	9.00	8.63	2.66
6,700.00	80.13	357.90	6,190.19	-117.62	-1,548.21	-136.79	9.00	8.65	2.56
6,750.00	84.45	359.14	6,196.90	-68.10	-1,549.49	-87.29	9.00	8.66	2.49
6,800.00	88.78	0.37	6,199.85	-18.20	-1,549.70	-37.40	9.00	8.66	2.45
6,814.04	90.00	0.71	6,200.00	-4.16	-1,549.57	-23.36	9.00	8.66	2.44
End Build/TPZ @ 6814.04ft									
6,900.00	90.00	0.71	6,200.00	81.79	-1,548.50	62.60	0.00	0.00	0.00
7,000.00	90.00	0.71	6,200.00	181.78	-1,547.26	162.60	0.00	0.00	0.00
7,100.00	90.00	0.71	6,200.00	281.78	-1,546.02	262.60	0.00	0.00	0.00
7,200.00	90.00	0.71	6,200.00	381.77	-1,544.78	362.60	0.00	0.00	0.00
7,300.00	90.00	0.71	6,200.00	481.76	-1,543.53	462.60	0.00	0.00	0.00
7,400.00	90.00	0.71	6,200.00	581.75	-1,542.29	562.60	0.00	0.00	0.00
7,500.00	90.00	0.71	6,200.00	681.75	-1,541.05	662.60	0.00	0.00	0.00
7,600.00	90.00	0.71	6,200.00	781.74	-1,539.81	762.60	0.00	0.00	0.00
7,700.00	90.00	0.71	6,200.00	881.73	-1,538.57	862.60	0.00	0.00	0.00
7,800.00	90.00	0.71	6,200.00	981.72	-1,537.32	962.60	0.00	0.00	0.00
7,900.00	90.00	0.71	6,200.00	1,081.71	-1,536.08	1,062.60	0.00	0.00	0.00
8,000.00	90.00	0.71	6,200.00	1,181.71	-1,534.84	1,162.60	0.00	0.00	0.00
8,100.00	90.00	0.71	6,200.00	1,281.70	-1,533.60	1,262.60	0.00	0.00	0.00
8,200.00	90.00	0.71	6,200.00	1,381.69	-1,532.35	1,362.60	0.00	0.00	0.00
8,300.00	90.00	0.71	6,200.00	1,481.68	-1,531.11	1,462.60	0.00	0.00	0.00
8,400.00	90.00	0.71	6,200.00	1,581.68	-1,529.87	1,562.60	0.00	0.00	0.00
8,500.00	90.00	0.71	6,200.00	1,681.67	-1,528.63	1,662.60	0.00	0.00	0.00

Planning Report

Database:	EDM 5000.16 Single User Db	Local Co-ordinate Reference:	Well PEGGY 2525-02H
Company:	VERDAD RESOURCES	TVD Reference:	RKB = 20' @ 4914.00usft (RIG)
Project:	WATTENBERG FIELD	MD Reference:	RKB = 20' @ 4914.00usft (RIG)
Site:	9N-60W-25 PEGGY 2525 PAD	North Reference:	True
Well:	PEGGY 2525-02H	Survey Calculation Method:	Minimum Curvature
Wellbore:	Plan B		
Design:	Design #1		

Planned Survey										
Measured Depth (usft)	Inclination (°)	Azimuth (°)	Vertical Depth (usft)	+N/-S (usft)	+E/-W (usft)	Vertical Section (usft)	Dogleg Rate (°/100usft)	Build Rate (°/100usft)	Turn Rate (°/100usft)	
8,600.00	90.00	0.71	6,200.00	1,781.66	-1,527.39	1,762.60	0.00	0.00	0.00	
8,700.00	90.00	0.71	6,200.00	1,881.65	-1,526.14	1,862.60	0.00	0.00	0.00	
8,800.00	90.00	0.71	6,200.00	1,981.65	-1,524.90	1,962.60	0.00	0.00	0.00	
8,900.00	90.00	0.71	6,200.00	2,081.64	-1,523.66	2,062.60	0.00	0.00	0.00	
9,000.00	90.00	0.71	6,200.00	2,181.63	-1,522.42	2,162.60	0.00	0.00	0.00	
9,100.00	90.00	0.71	6,200.00	2,281.62	-1,521.18	2,262.60	0.00	0.00	0.00	
9,200.00	90.00	0.71	6,200.00	2,381.61	-1,519.93	2,362.60	0.00	0.00	0.00	
9,300.00	90.00	0.71	6,200.00	2,481.61	-1,518.69	2,462.60	0.00	0.00	0.00	
9,400.00	90.00	0.71	6,200.00	2,581.60	-1,517.45	2,562.60	0.00	0.00	0.00	
9,500.00	90.00	0.71	6,200.00	2,681.59	-1,516.21	2,662.60	0.00	0.00	0.00	
9,600.00	90.00	0.71	6,200.00	2,781.58	-1,514.96	2,762.60	0.00	0.00	0.00	
9,700.00	90.00	0.71	6,200.00	2,881.58	-1,513.72	2,862.60	0.00	0.00	0.00	
9,800.00	90.00	0.71	6,200.00	2,981.57	-1,512.48	2,962.60	0.00	0.00	0.00	
9,900.00	90.00	0.71	6,200.00	3,081.56	-1,511.24	3,062.60	0.00	0.00	0.00	
10,000.00	90.00	0.71	6,200.00	3,181.55	-1,510.00	3,162.60	0.00	0.00	0.00	
10,100.00	90.00	0.71	6,200.00	3,281.54	-1,508.75	3,262.60	0.00	0.00	0.00	
10,200.00	90.00	0.71	6,200.00	3,381.54	-1,507.51	3,362.60	0.00	0.00	0.00	
10,300.00	90.00	0.71	6,200.00	3,481.53	-1,506.27	3,462.60	0.00	0.00	0.00	
10,400.00	90.00	0.71	6,200.00	3,581.52	-1,505.03	3,562.60	0.00	0.00	0.00	
10,500.00	90.00	0.71	6,200.00	3,681.51	-1,503.79	3,662.60	0.00	0.00	0.00	
10,516.80	90.00	0.71	6,200.00	3,698.31	-1,503.58	3,679.40	0.00	0.00	0.00	
Lease Entry @ 10516.80ft										
10,600.00	90.00	0.71	6,200.00	3,781.51	-1,502.54	3,762.60	0.00	0.00	0.00	
10,700.00	90.00	0.71	6,200.00	3,881.50	-1,501.30	3,862.60	0.00	0.00	0.00	
10,800.00	90.00	0.71	6,200.00	3,981.49	-1,500.06	3,962.60	0.00	0.00	0.00	
10,900.00	90.00	0.71	6,200.00	4,081.48	-1,498.82	4,062.60	0.00	0.00	0.00	
11,000.00	90.00	0.71	6,200.00	4,181.48	-1,497.57	4,162.60	0.00	0.00	0.00	
11,100.00	90.00	0.71	6,200.00	4,281.47	-1,496.33	4,262.60	0.00	0.00	0.00	
11,200.00	90.00	0.71	6,200.00	4,381.46	-1,495.09	4,362.60	0.00	0.00	0.00	
11,300.00	90.00	0.71	6,200.00	4,481.45	-1,493.85	4,462.60	0.00	0.00	0.00	
11,400.00	90.00	0.71	6,200.00	4,581.44	-1,492.61	4,562.60	0.00	0.00	0.00	
11,500.00	90.00	0.71	6,200.00	4,681.44	-1,491.36	4,662.60	0.00	0.00	0.00	
11,551.06	90.00	0.71	6,200.00	4,732.49	-1,490.73	4,713.66	0.00	0.00	0.00	
BPZ @ 11551.06ft										
11,600.00	90.00	0.71	6,200.00	4,781.43	-1,490.12	4,762.60	0.00	0.00	0.00	
11,641.06	90.00	0.71	6,200.00	4,822.48	-1,489.61	4,803.66	0.00	0.00	0.00	
TD Well @ 11641.06ft										

Casing Points					
Measured Depth (usft)	Vertical Depth (usft)	Name		Casing Diameter (")	Hole Diameter (")
1,609.81	1,575.00	9 5/8"		9-5/8	13-1/2

Planning Report

Database:	EDM 5000.16 Single User Db	Local Co-ordinate Reference:	Well PEGGY 2525-02H
Company:	VERDAD RESOURCES	TVD Reference:	RKB = 20' @ 4914.00usft (RIG)
Project:	WATTENBERG FIELD	MD Reference:	RKB = 20' @ 4914.00usft (RIG)
Site:	9N-60W-25 PEGGY 2525 PAD	North Reference:	True
Well:	PEGGY 2525-02H	Survey Calculation Method:	Minimum Curvature
Wellbore:	Plan B		
Design:	Design #1		

Plan Annotations				
Measured Depth (usft)	Vertical Depth (usft)	Local Coordinates		Comment
		+N/-S (usft)	+E/-W (usft)	
270.00	270.00	0.00	0.00	Begin Nudge @ 270.00ft
1,140.00	1,126.69	-55.59	-118.72	Hold Tangent @ 1140.00ft
5,730.94	5,507.55	-637.75	-1,362.06	KOP @ 5730.94ft :: DLS = 9°/100'
6,814.04	6,200.00	-4.16	-1,549.57	End Build/TPZ @ 6814.04ft
10,516.80	6,200.00	3,698.31	-1,503.58	Lease Entry @ 10516.80ft
11,551.06	6,200.00	4,732.49	-1,490.73	BPZ @ 11551.06ft
11,641.06	6,200.00	4,822.48	-1,489.61	TD Well @ 11641.06ft