

# **VERDAD RESOURCES**

**WATTENBERG FIELD**

**9N-60W-25 PEGGY 2525 PAD**

**PEGGY 2525-01H**

**Plan B**

**Plan: Design #1**

## **Standard Planning Report**

**13 November, 2021**

Project: WATTENBERG FIELD  
Site: 9N-60W-25 PEGGY 2525 PAD  
Well: PEGGY 2525-01H  
Wellbore: Plan B  
Design: Design #1

# VERDAD RESOURCES

## CASING DETAILS

TVD	MD	Name	Size
1575.00	1618.64	9 5/8"	9-5/8

## SECTION DETAILS

Sec	MD	Inc	Azi	TVD	+N/-S	+E/-W	Dleg	TFace	VSec	Target
1	0.00	0.00	0.00	0.00	0.00	0.00	0.00	0.00	0.00	
2	252.20	0.00	0.00	252.20	0.00	0.00	0.00	0.00	0.00	
3	1284.20	20.64	250.23	1282.02	-62.20	-173.04	2.00	250.23	-64.34	
4	5870.47	20.64	250.23	5553.92	-609.02	-1694.39	0.00	0.00	-629.97	
5	6922.04	90.00	353.50	6200.00	-5.38	-2001.56	9.00	102.45	-30.18	
6	7072.04	90.00	353.50	6200.00	143.66	-2018.54	0.00	0.00	118.64	
7	7460.22	90.00	1.26	6200.00	531.14	-2036.26	2.00	90.00	505.87	
8	11749.58	90.00	1.26	6200.00	4819.46	-1941.66	0.00	0.00	4795.03	PEGGY 2525-01H_BHL

## WELLBORE TARGET DETAILS (LAT/LONG)

Name	MD	TVD	+N/-S	+E/-W	Latitude	Longitude
PEGGY 2525-01H_SHL	0.00	0.00	0.00	0.00	40.714776	-104.041133
PEGGY 2525-01H_TPZ	6922.04	6200.00	-5.38	-2001.56	40.714761	-104.048353
PEGGY 2525-01H_Lease Entry Point	10625.57	6200.00	3695.72	-1966.45	40.724920	-104.048227
PEGGY 2525-01H_BPZ	11659.53	6200.00	4729.43	-1942.78	40.727757	-104.048142
PEGGY 2525-01H_BHL	11749.58	6200.00	4819.46	-1941.66	40.728004	-104.048138

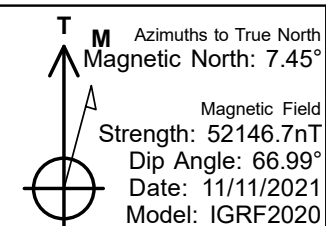
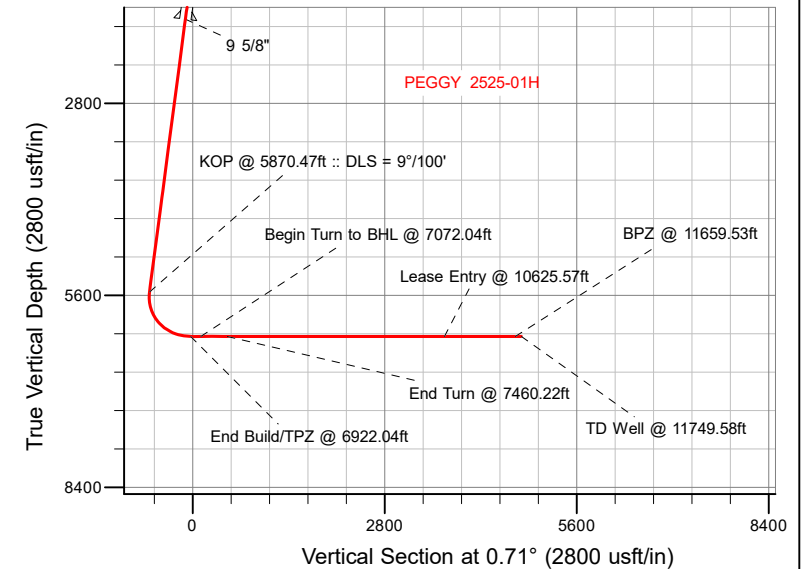
**SHL**  
301' FSL  
2331' FWL

**TPZ**  
300' FSL  
330' FWL

**LEASE ENTRY**  
1331' FNL  
320' FWL

**BPZ**  
300' FNL  
330' FWL

**BHL**  
210' FNL  
330' FWL



## WELL DETAILS: PEGGY 2525-01H

GL = 4895'

RKB = 20' @ 4915.00usft (RIG)

Plan: Design #1 (PEGGY 2525-01H/Plan B)

Date: 11/13/2021

## Planning Report

<b>Database:</b>	EDM 5000.16 Single User Db	<b>Local Co-ordinate Reference:</b>	Well PEGGY 2525-01H
<b>Company:</b>	VERDAD RESOURCES	<b>TVD Reference:</b>	RKB = 20' @ 4915.00usft (RIG)
<b>Project:</b>	WATTENBERG FIELD	<b>MD Reference:</b>	RKB = 20' @ 4915.00usft (RIG)
<b>Site:</b>	9N-60W-25 PEGGY 2525 PAD	<b>North Reference:</b>	True
<b>Well:</b>	PEGGY 2525-01H	<b>Survey Calculation Method:</b>	Minimum Curvature
<b>Wellbore:</b>	Plan B		
<b>Design:</b>	Design #1		

<b>Project</b>	WATTENBERG FIELD		
<b>Map System:</b>	US State Plane 1983	<b>System Datum:</b>	Mean Sea Level
<b>Geo Datum:</b>	North American Datum 1983		
<b>Map Zone:</b>	Colorado Northern Zone		

<b>Site</b>	9N-60W-25 PEGGY 2525 PAD			
<b>Site Position:</b>		<b>Northing:</b>	1,511,260.26 usft	<b>Latitude:</b> 40.727757
<b>From:</b>	Lat/Long	<b>Easting:</b>	3,402,379.40 usft	<b>Longitude:</b> -104.048161
<b>Position Uncertainty:</b>	0.00 usft	<b>Slot Radius:</b>	13-3/16 "	

<b>Well</b>	PEGGY 2525-01H			
<b>Well Position</b>	<b>+N/-S</b>	0.00 usft	<b>Northing:</b>	1,506,563.55 usft
	<b>+E/-W</b>	0.00 usft	<b>Easting:</b>	3,404,404.73 usft
<b>Position Uncertainty</b>		3.28 usft	<b>Wellhead Elevation:</b>	usft
<b>Grid Convergence:</b>		0.94 °	<b>Ground Level:</b>	4,895.00 usft

<b>Wellbore</b>	Plan B				
<b>Magnetics</b>	<b>Model Name</b>	<b>Sample Date</b>	<b>Declination (°)</b>	<b>Dip Angle (°)</b>	<b>Field Strength (nT)</b>
	IGRF202013	11/11/2021	7.45	66.99	52,146.66835848

<b>Design</b>	Design #1				
<b>Audit Notes:</b>					
<b>Version:</b>		<b>Phase:</b>	PLAN	<b>Tie On Depth:</b>	0.00
<b>Vertical Section:</b>	<b>Depth From (TVD) (usft)</b>	<b>+N/-S (usft)</b>	<b>+E/-W (usft)</b>	<b>Direction (°)</b>	
	0.00	0.00	0.00	0.71	

<b>Plan Survey Tool Program</b>	<b>Date</b>	11/13/2021			
<b>Depth From (usft)</b>	<b>Depth To (usft)</b>	<b>Survey (Wellbore)</b>	<b>Tool Name</b>	<b>Remarks</b>	
1	0.00	1,575.00	Design #1 (Plan B)	ISCWSA MWD	
				Fixed:v2:standard declination	
2	1,575.00	11,749.58	Design #1 (Plan B)	ISCWSA MWD	
				Fixed:v2:standard declination	

Planning Report

Database:	EDM 5000.16 Single User Db	Local Co-ordinate Reference:	Well PEGGY 2525-01H
Company:	VERDAD RESOURCES	TVD Reference:	RKB = 20' @ 4915.00usft (RIG)
Project:	WATTENBERG FIELD	MD Reference:	RKB = 20' @ 4915.00usft (RIG)
Site:	9N-60W-25 PEGGY 2525 PAD	North Reference:	True
Well:	PEGGY 2525-01H	Survey Calculation Method:	Minimum Curvature
Wellbore:	Plan B		
Design:	Design #1		

Plan Sections										
Measured Depth (usft)	Inclination (°)	Azimuth (°)	Vertical Depth (usft)	+N/-S (usft)	+E/-W (usft)	Dogleg Rate (°/100usft)	Build Rate (°/100usft)	Turn Rate (°/100usft)	TFO (°)	Target
0.00	0.00	0.00	0.00	0.00	0.00	0.00	0.00	0.00	0.00	
252.20	0.00	0.00	252.20	0.00	0.00	0.00	0.00	0.00	0.00	
1,284.20	20.64	250.23	1,262.02	-62.20	-173.04	2.00	2.00	0.00	250.23	
5,870.47	20.64	250.23	5,553.92	-609.02	-1,694.39	0.00	0.00	0.00	0.00	
6,922.04	90.00	353.50	6,200.00	-5.38	-2,001.56	9.00	6.60	9.82	102.45	
7,072.04	90.00	353.50	6,200.00	143.66	-2,018.54	0.00	0.00	0.00	0.00	
7,460.22	90.00	1.26	6,200.00	531.14	-2,036.26	2.00	0.00	2.00	90.00	
11,749.58	90.00	1.26	6,200.00	4,819.46	-1,941.66	0.00	0.00	0.00	0.00	PEGGY 2525-01H_BI

# Planning Report

<b>Database:</b>	EDM 5000.16 Single User Db	<b>Local Co-ordinate Reference:</b>	Well PEGGY 2525-01H
<b>Company:</b>	VERDAD RESOURCES	<b>TVD Reference:</b>	RKB = 20' @ 4915.00usft (RIG)
<b>Project:</b>	WATTENBERG FIELD	<b>MD Reference:</b>	RKB = 20' @ 4915.00usft (RIG)
<b>Site:</b>	9N-60W-25 PEGGY 2525 PAD	<b>North Reference:</b>	True
<b>Well:</b>	PEGGY 2525-01H	<b>Survey Calculation Method:</b>	Minimum Curvature
<b>Wellbore:</b>	Plan B		
<b>Design:</b>	Design #1		

Planned Survey									
Measured Depth (usft)	Inclination (°)	Azimuth (°)	Vertical Depth (usft)	+N/-S (usft)	+E/-W (usft)	Vertical Section (usft)	Dogleg Rate (°/100usft)	Build Rate (°/100usft)	Turn Rate (°/100usft)
0.00	0.00	0.00	0.00	0.00	0.00	0.00	0.00	0.00	0.00
100.00	0.00	0.00	100.00	0.00	0.00	0.00	0.00	0.00	0.00
200.00	0.00	0.00	200.00	0.00	0.00	0.00	0.00	0.00	0.00
252.20	0.00	0.00	252.20	0.00	0.00	0.00	0.00	0.00	0.00
Begin Nudge @ 252.20ft									
300.00	0.96	250.23	300.00	-0.13	-0.38	-0.14	2.00	2.00	0.00
400.00	2.96	250.23	399.93	-1.29	-3.59	-1.33	2.00	2.00	0.00
500.00	4.96	250.23	499.69	-3.62	-10.08	-3.75	2.00	2.00	0.00
600.00	6.96	250.23	599.15	-7.13	-19.84	-7.38	2.00	2.00	0.00
700.00	8.96	250.23	698.18	-11.81	-32.87	-12.22	2.00	2.00	0.00
800.00	10.96	250.23	796.67	-17.66	-49.14	-18.27	2.00	2.00	0.00
900.00	12.96	250.23	894.49	-24.67	-68.63	-25.52	2.00	2.00	0.00
1,000.00	14.96	250.23	991.54	-32.83	-91.33	-33.95	2.00	2.00	0.00
1,100.00	16.96	250.23	1,087.68	-42.12	-117.19	-43.57	2.00	2.00	0.00
1,200.00	18.96	250.23	1,182.80	-52.55	-146.20	-54.36	2.00	2.00	0.00
1,284.20	20.64	250.23	1,262.02	-62.20	-173.04	-64.34	2.00	2.00	0.00
Hold Tangent @ 1284.20ft									
1,300.00	20.64	250.23	1,276.81	-64.08	-178.28	-66.28	0.00	0.00	0.00
1,400.00	20.64	250.23	1,370.39	-76.00	-211.45	-78.62	0.00	0.00	0.00
1,500.00	20.64	250.23	1,463.97	-87.93	-244.63	-90.95	0.00	0.00	0.00
1,600.00	20.64	250.23	1,557.55	-99.85	-277.80	-103.28	0.00	0.00	0.00
1,618.64	20.64	250.23	1,575.00	-102.07	-283.98	-105.58	0.00	0.00	0.00
9 5/8"									
1,700.00	20.64	250.23	1,651.14	-111.77	-310.97	-115.62	0.00	0.00	0.00
1,800.00	20.64	250.23	1,744.72	-123.70	-344.14	-127.95	0.00	0.00	0.00
1,900.00	20.64	250.23	1,838.30	-135.62	-377.31	-140.28	0.00	0.00	0.00
2,000.00	20.64	250.23	1,931.88	-147.54	-410.49	-152.62	0.00	0.00	0.00
2,100.00	20.64	250.23	2,025.46	-159.46	-443.66	-164.95	0.00	0.00	0.00
2,200.00	20.64	250.23	2,119.04	-171.39	-476.83	-177.28	0.00	0.00	0.00
2,300.00	20.64	250.23	2,212.62	-183.31	-510.00	-189.62	0.00	0.00	0.00
2,400.00	20.64	250.23	2,306.20	-195.23	-543.17	-201.95	0.00	0.00	0.00
2,500.00	20.64	250.23	2,399.79	-207.16	-576.35	-214.28	0.00	0.00	0.00
2,600.00	20.64	250.23	2,493.37	-219.08	-609.52	-226.62	0.00	0.00	0.00
2,700.00	20.64	250.23	2,586.95	-231.00	-642.69	-238.95	0.00	0.00	0.00
2,800.00	20.64	250.23	2,680.53	-242.93	-675.86	-251.28	0.00	0.00	0.00
2,900.00	20.64	250.23	2,774.11	-254.85	-709.03	-263.61	0.00	0.00	0.00
3,000.00	20.64	250.23	2,867.69	-266.77	-742.20	-275.95	0.00	0.00	0.00
3,100.00	20.64	250.23	2,961.27	-278.69	-775.38	-288.28	0.00	0.00	0.00
3,200.00	20.64	250.23	3,054.86	-290.62	-808.55	-300.61	0.00	0.00	0.00
3,300.00	20.64	250.23	3,148.44	-302.54	-841.72	-312.95	0.00	0.00	0.00
3,400.00	20.64	250.23	3,242.02	-314.46	-874.89	-325.28	0.00	0.00	0.00
3,500.00	20.64	250.23	3,335.60	-326.39	-908.06	-337.61	0.00	0.00	0.00
3,600.00	20.64	250.23	3,429.18	-338.31	-941.24	-349.95	0.00	0.00	0.00
3,700.00	20.64	250.23	3,522.76	-350.23	-974.41	-362.28	0.00	0.00	0.00
3,800.00	20.64	250.23	3,616.34	-362.15	-1,007.58	-374.61	0.00	0.00	0.00
3,900.00	20.64	250.23	3,709.93	-374.08	-1,040.75	-386.95	0.00	0.00	0.00
4,000.00	20.64	250.23	3,803.51	-386.00	-1,073.92	-399.28	0.00	0.00	0.00
4,100.00	20.64	250.23	3,897.09	-397.92	-1,107.09	-411.61	0.00	0.00	0.00
4,200.00	20.64	250.23	3,990.67	-409.85	-1,140.27	-423.94	0.00	0.00	0.00
4,300.00	20.64	250.23	4,084.25	-421.77	-1,173.44	-436.28	0.00	0.00	0.00
4,400.00	20.64	250.23	4,177.83	-433.69	-1,206.61	-448.61	0.00	0.00	0.00
4,500.00	20.64	250.23	4,271.41	-445.62	-1,239.78	-460.94	0.00	0.00	0.00
4,600.00	20.64	250.23	4,365.00	-457.54	-1,272.95	-473.28	0.00	0.00	0.00

## Planning Report

<b>Database:</b>	EDM 5000.16 Single User Db	<b>Local Co-ordinate Reference:</b>	Well PEGGY 2525-01H
<b>Company:</b>	VERDAD RESOURCES	<b>TVD Reference:</b>	RKB = 20' @ 4915.00usft (RIG)
<b>Project:</b>	WATTENBERG FIELD	<b>MD Reference:</b>	RKB = 20' @ 4915.00usft (RIG)
<b>Site:</b>	9N-60W-25 PEGGY 2525 PAD	<b>North Reference:</b>	True
<b>Well:</b>	PEGGY 2525-01H	<b>Survey Calculation Method:</b>	Minimum Curvature
<b>Wellbore:</b>	Plan B		
<b>Design:</b>	Design #1		

Planned Survey									
Measured Depth (usft)	Inclination (°)	Azimuth (°)	Vertical Depth (usft)	+N/-S (usft)	+E/-W (usft)	Vertical Section (usft)	Dogleg Rate (°/100usft)	Build Rate (°/100usft)	Turn Rate (°/100usft)
4,700.00	20.64	250.23	4,458.58	-469.46	-1,306.13	-485.61	0.00	0.00	0.00
4,800.00	20.64	250.23	4,552.16	-481.38	-1,339.30	-497.94	0.00	0.00	0.00
4,900.00	20.64	250.23	4,645.74	-493.31	-1,372.47	-510.28	0.00	0.00	0.00
5,000.00	20.64	250.23	4,739.32	-505.23	-1,405.64	-522.61	0.00	0.00	0.00
5,100.00	20.64	250.23	4,832.90	-517.15	-1,438.81	-534.94	0.00	0.00	0.00
5,200.00	20.64	250.23	4,926.48	-529.08	-1,471.98	-547.28	0.00	0.00	0.00
5,300.00	20.64	250.23	5,020.06	-541.00	-1,505.16	-559.61	0.00	0.00	0.00
5,400.00	20.64	250.23	5,113.65	-552.92	-1,538.33	-571.94	0.00	0.00	0.00
5,500.00	20.64	250.23	5,207.23	-564.85	-1,571.50	-584.28	0.00	0.00	0.00
5,600.00	20.64	250.23	5,300.81	-576.77	-1,604.67	-596.61	0.00	0.00	0.00
5,700.00	20.64	250.23	5,394.39	-588.69	-1,637.84	-608.94	0.00	0.00	0.00
5,800.00	20.64	250.23	5,487.97	-600.61	-1,671.02	-621.27	0.00	0.00	0.00
5,870.47	20.64	250.23	5,553.92	-609.02	-1,694.39	-629.97	0.00	0.00	0.00
<b>KOP @ 5870.47ft :: DLS = 9°/100'</b>									
5,900.00	20.23	257.76	5,581.59	-611.86	-1,704.28	-632.93	9.00	-1.40	25.48
5,950.00	20.28	270.78	5,628.53	-613.58	-1,721.40	-634.86	9.00	0.11	26.04
6,000.00	21.27	283.18	5,675.30	-611.39	-1,738.91	-632.89	9.00	1.98	24.80
6,050.00	23.08	294.12	5,721.62	-605.32	-1,756.69	-627.04	9.00	3.60	21.90
6,100.00	25.52	303.33	5,767.20	-595.39	-1,774.64	-617.33	9.00	4.89	18.41
6,150.00	28.44	310.89	5,811.77	-581.67	-1,792.65	-603.84	9.00	5.84	15.13
6,200.00	31.70	317.09	5,855.04	-564.25	-1,810.60	-586.64	9.00	6.53	12.39
6,250.00	35.21	322.20	5,896.76	-543.22	-1,828.39	-565.84	9.00	7.02	10.23
6,300.00	38.90	326.48	5,936.66	-518.73	-1,845.91	-541.57	9.00	7.38	8.55
6,350.00	42.73	330.11	5,974.50	-490.92	-1,863.04	-513.97	9.00	7.65	7.27
6,400.00	46.65	333.25	6,010.05	-459.97	-1,879.68	-483.23	9.00	7.85	6.28
6,450.00	50.65	336.00	6,043.08	-426.06	-1,895.73	-449.52	9.00	8.00	5.51
6,500.00	54.70	338.46	6,073.40	-389.40	-1,911.09	-413.05	9.00	8.11	4.91
6,550.00	58.80	340.67	6,100.80	-350.22	-1,925.67	-374.06	9.00	8.20	4.43
6,600.00	62.94	342.71	6,125.14	-308.76	-1,939.37	-332.77	9.00	8.27	4.06
6,650.00	67.10	344.59	6,146.25	-265.28	-1,952.12	-289.45	9.00	8.33	3.77
6,700.00	71.28	346.37	6,164.01	-220.05	-1,963.83	-244.36	9.00	8.37	3.55
6,750.00	75.48	348.05	6,178.31	-173.33	-1,974.42	-197.79	9.00	8.40	3.38
6,800.00	79.70	349.68	6,189.05	-125.43	-1,983.84	-150.01	9.00	8.42	3.25
6,850.00	83.91	351.26	6,196.18	-76.64	-1,992.03	-101.32	9.00	8.44	3.16
6,900.00	88.14	352.82	6,199.64	-27.25	-1,998.94	-52.02	9.00	8.45	3.11
6,922.04	90.00	353.50	6,200.00	-5.38	-2,001.56	-30.18	9.00	8.45	3.10
<b>End Build/TPZ @ 6922.04ft</b>									
7,000.00	90.00	353.50	6,200.00	72.09	-2,010.39	47.17	0.00	0.00	0.00
7,072.04	90.00	353.50	6,200.00	143.66	-2,018.54	118.64	0.00	0.00	0.00
<b>Begin Turn to BHL @ 7072.04ft</b>									
7,100.00	90.00	354.06	6,200.00	171.46	-2,021.57	146.39	2.00	0.00	2.00
7,200.00	90.00	356.06	6,200.00	271.08	-2,030.19	245.90	2.00	0.00	2.00
7,300.00	90.00	358.06	6,200.00	370.94	-2,035.32	345.70	2.00	0.00	2.00
7,400.00	90.00	0.06	6,200.00	470.93	-2,036.96	445.65	2.00	0.00	2.00
7,460.22	90.00	1.26	6,200.00	531.14	-2,036.26	505.87	2.00	0.00	2.00
<b>End Turn @ 7460.22ft</b>									
7,500.00	90.00	1.26	6,200.00	570.91	-2,035.38	545.65	0.00	0.00	0.00
7,600.00	90.00	1.26	6,200.00	670.89	-2,033.18	645.64	0.00	0.00	0.00
7,700.00	90.00	1.26	6,200.00	770.86	-2,030.97	745.64	0.00	0.00	0.00
7,800.00	90.00	1.26	6,200.00	870.84	-2,028.77	845.63	0.00	0.00	0.00
7,900.00	90.00	1.26	6,200.00	970.81	-2,026.56	945.63	0.00	0.00	0.00
8,000.00	90.00	1.26	6,200.00	1,070.79	-2,024.36	1,045.62	0.00	0.00	0.00
8,100.00	90.00	1.26	6,200.00	1,170.77	-2,022.15	1,145.62	0.00	0.00	0.00
8,200.00	90.00	1.26	6,200.00	1,270.74	-2,019.95	1,245.61	0.00	0.00	0.00

## Planning Report

<b>Database:</b>	EDM 5000.16 Single User Db	<b>Local Co-ordinate Reference:</b>	Well PEGGY 2525-01H
<b>Company:</b>	VERDAD RESOURCES	<b>TVD Reference:</b>	RKB = 20' @ 4915.00usft (RIG)
<b>Project:</b>	WATTENBERG FIELD	<b>MD Reference:</b>	RKB = 20' @ 4915.00usft (RIG)
<b>Site:</b>	9N-60W-25 PEGGY 2525 PAD	<b>North Reference:</b>	True
<b>Well:</b>	PEGGY 2525-01H	<b>Survey Calculation Method:</b>	Minimum Curvature
<b>Wellbore:</b>	Plan B		
<b>Design:</b>	Design #1		

Planned Survey									
Measured Depth (usft)	Inclination (°)	Azimuth (°)	Vertical Depth (usft)	+N/-S (usft)	+E/-W (usft)	Vertical Section (usft)	Dogleg Rate (°/100usft)	Build Rate (°/100usft)	Turn Rate (°/100usft)
8,300.00	90.00	1.26	6,200.00	1,370.72	-2,017.74	1,345.61	0.00	0.00	0.00
8,400.00	90.00	1.26	6,200.00	1,470.69	-2,015.54	1,445.60	0.00	0.00	0.00
8,500.00	90.00	1.26	6,200.00	1,570.67	-2,013.33	1,545.60	0.00	0.00	0.00
8,600.00	90.00	1.26	6,200.00	1,670.64	-2,011.12	1,645.59	0.00	0.00	0.00
8,700.00	90.00	1.26	6,200.00	1,770.62	-2,008.92	1,745.59	0.00	0.00	0.00
8,800.00	90.00	1.26	6,200.00	1,870.60	-2,006.71	1,845.59	0.00	0.00	0.00
8,900.00	90.00	1.26	6,200.00	1,970.57	-2,004.51	1,945.58	0.00	0.00	0.00
9,000.00	90.00	1.26	6,200.00	2,070.55	-2,002.30	2,045.58	0.00	0.00	0.00
9,100.00	90.00	1.26	6,200.00	2,170.52	-2,000.10	2,145.57	0.00	0.00	0.00
9,200.00	90.00	1.26	6,200.00	2,270.50	-1,997.89	2,245.57	0.00	0.00	0.00
9,300.00	90.00	1.26	6,200.00	2,370.47	-1,995.69	2,345.56	0.00	0.00	0.00
9,400.00	90.00	1.26	6,200.00	2,470.45	-1,993.48	2,445.56	0.00	0.00	0.00
9,500.00	90.00	1.26	6,200.00	2,570.42	-1,991.28	2,545.55	0.00	0.00	0.00
9,600.00	90.00	1.26	6,200.00	2,670.40	-1,989.07	2,645.55	0.00	0.00	0.00
9,700.00	90.00	1.26	6,200.00	2,770.38	-1,986.87	2,745.54	0.00	0.00	0.00
9,800.00	90.00	1.26	6,200.00	2,870.35	-1,984.66	2,845.54	0.00	0.00	0.00
9,900.00	90.00	1.26	6,200.00	2,970.33	-1,982.45	2,945.53	0.00	0.00	0.00
10,000.00	90.00	1.26	6,200.00	3,070.30	-1,980.25	3,045.53	0.00	0.00	0.00
10,100.00	90.00	1.26	6,200.00	3,170.28	-1,978.04	3,145.52	0.00	0.00	0.00
10,200.00	90.00	1.26	6,200.00	3,270.25	-1,975.84	3,245.52	0.00	0.00	0.00
10,300.00	90.00	1.26	6,200.00	3,370.23	-1,973.63	3,345.52	0.00	0.00	0.00
10,400.00	90.00	1.26	6,200.00	3,470.21	-1,971.43	3,445.51	0.00	0.00	0.00
10,500.00	90.00	1.26	6,200.00	3,570.18	-1,969.22	3,545.51	0.00	0.00	0.00
10,600.00	90.00	1.26	6,200.00	3,670.16	-1,967.02	3,645.50	0.00	0.00	0.00
10,625.57	90.00	1.26	6,200.00	3,695.72	-1,966.45	3,671.07	0.00	0.00	0.00
Lease Entry @ 10625.57ft									
10,700.00	90.00	1.26	6,200.00	3,770.13	-1,964.81	3,745.50	0.00	0.00	0.00
10,800.00	90.00	1.26	6,200.00	3,870.11	-1,962.61	3,845.49	0.00	0.00	0.00
10,900.00	90.00	1.26	6,200.00	3,970.08	-1,960.40	3,945.49	0.00	0.00	0.00
11,000.00	90.00	1.26	6,200.00	4,070.06	-1,958.20	4,045.48	0.00	0.00	0.00
11,100.00	90.00	1.26	6,200.00	4,170.04	-1,955.99	4,145.48	0.00	0.00	0.00
11,200.00	90.00	1.26	6,200.00	4,270.01	-1,953.78	4,245.47	0.00	0.00	0.00
11,300.00	90.00	1.26	6,200.00	4,369.99	-1,951.58	4,345.47	0.00	0.00	0.00
11,400.00	90.00	1.26	6,200.00	4,469.96	-1,949.37	4,445.46	0.00	0.00	0.00
11,500.00	90.00	1.26	6,200.00	4,569.94	-1,947.17	4,545.46	0.00	0.00	0.00
11,600.00	90.00	1.26	6,200.00	4,669.91	-1,944.96	4,645.45	0.00	0.00	0.00
11,659.53	90.00	1.26	6,200.00	4,729.43	-1,943.65	4,704.98	0.00	0.00	0.00
BPZ @ 11659.53ft									
11,700.00	90.00	1.26	6,200.00	4,769.89	-1,942.76	4,745.45	0.00	0.00	0.00
11,749.58	90.00	1.26	6,200.00	4,819.46	-1,941.66	4,795.03	0.00	0.00	0.00
TD Well @ 11749.58ft									

Casing Points				
Measured Depth (usft)	Vertical Depth (usft)	Name	Casing Diameter (")	Hole Diameter (")
1,618.64	1,575.00	9 5/8"	9-5/8	13-1/2

## Planning Report

<b>Database:</b>	EDM 5000.16 Single User Db	<b>Local Co-ordinate Reference:</b>	Well PEGGY 2525-01H
<b>Company:</b>	VERDAD RESOURCES	<b>TVD Reference:</b>	RKB = 20' @ 4915.00usft (RIG)
<b>Project:</b>	WATTENBERG FIELD	<b>MD Reference:</b>	RKB = 20' @ 4915.00usft (RIG)
<b>Site:</b>	9N-60W-25 PEGGY 2525 PAD	<b>North Reference:</b>	True
<b>Well:</b>	PEGGY 2525-01H	<b>Survey Calculation Method:</b>	Minimum Curvature
<b>Wellbore:</b>	Plan B		
<b>Design:</b>	Design #1		

Plan Annotations				
Measured Depth (usft)	Vertical Depth (usft)	Local Coordinates		Comment
		+N/-S (usft)	+E/-W (usft)	
252.20	252.20	0.00	0.00	Begin Nudge @ 252.20ft
1,284.20	1,262.02	-62.20	-173.04	Hold Tangent @ 1284.20ft
5,870.47	5,553.92	-609.02	-1,694.39	KOP @ 5870.47ft :: DLS = 9°/100'
6,922.04	6,200.00	-5.38	-2,001.56	End Build/TPZ @ 6922.04ft
7,072.04	6,200.00	143.66	-2,018.54	Begin Turn to BHL @ 7072.04ft
7,460.22	6,200.00	531.14	-2,036.26	End Turn @ 7460.22ft
10,625.57	6,200.00	3,695.72	-1,966.45	Lease Entry @ 10625.57ft
11,659.53	6,200.00	4,729.43	-1,943.65	BPZ @ 11659.53ft
11,749.58	6,200.00	4,819.46	-1,941.66	TD Well @ 11749.58ft