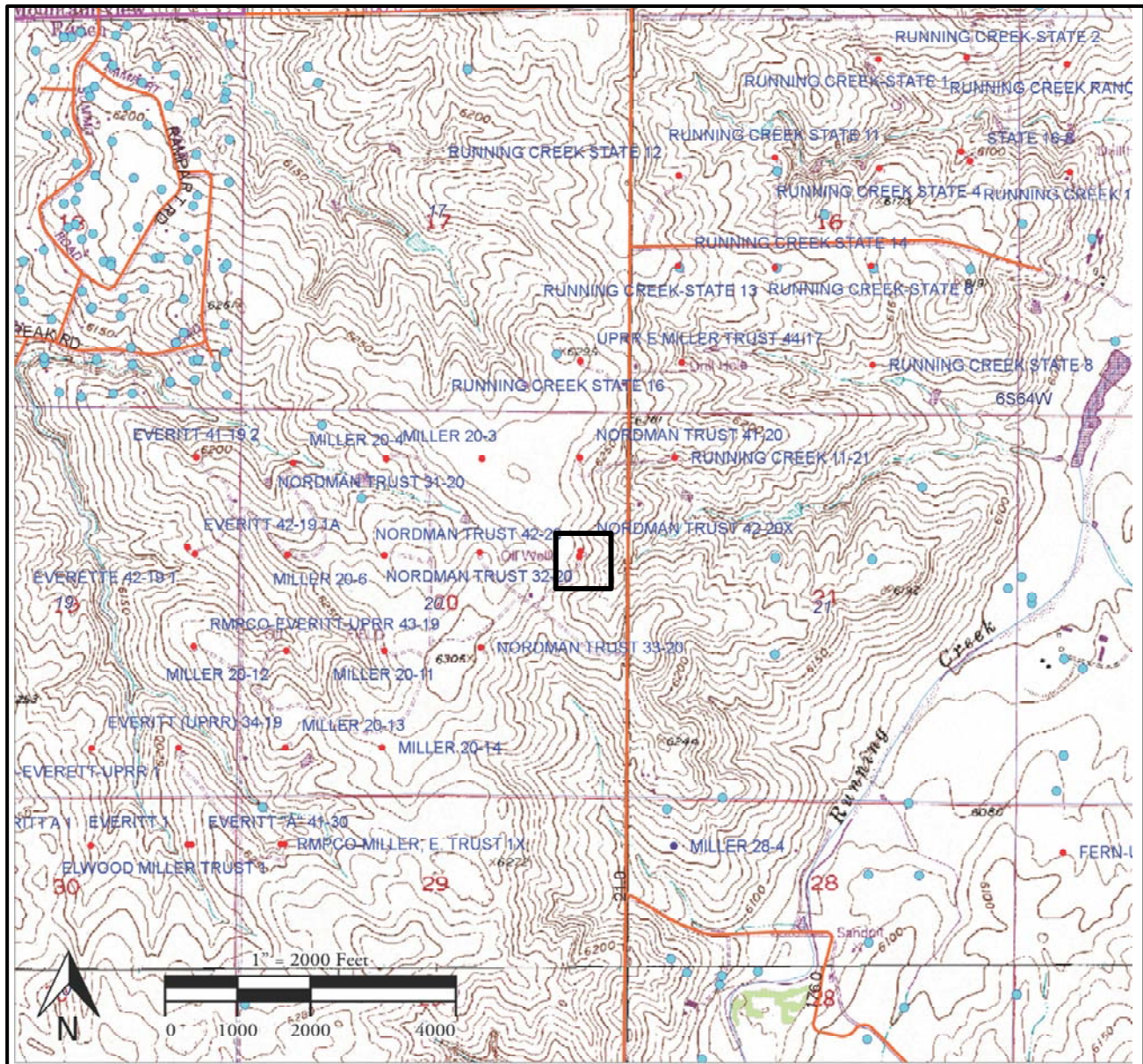


R64W

T 6 N



LEGEND:



Site Location

Road



Oil and Gas Well



DWR Permitted Water Well

Index Map



Location ID: 322190  
Coordinates: 39.515475 -104.572007

Drawing Date: 11/15/2021	Drawn By: JWH	Facility ID: 209636
Revision: 0	Revised By:	API #: 05-039-06541

**FIGURE 1**  
**GENERAL SITE LOCATION MAP**  
Petroshare Corporation  
Nordman Trust (OWP) #42-20X  
SE ¼ NE ¼ Section 20 T6S, R64W, 6 P.M.  
Elbert County Colorado