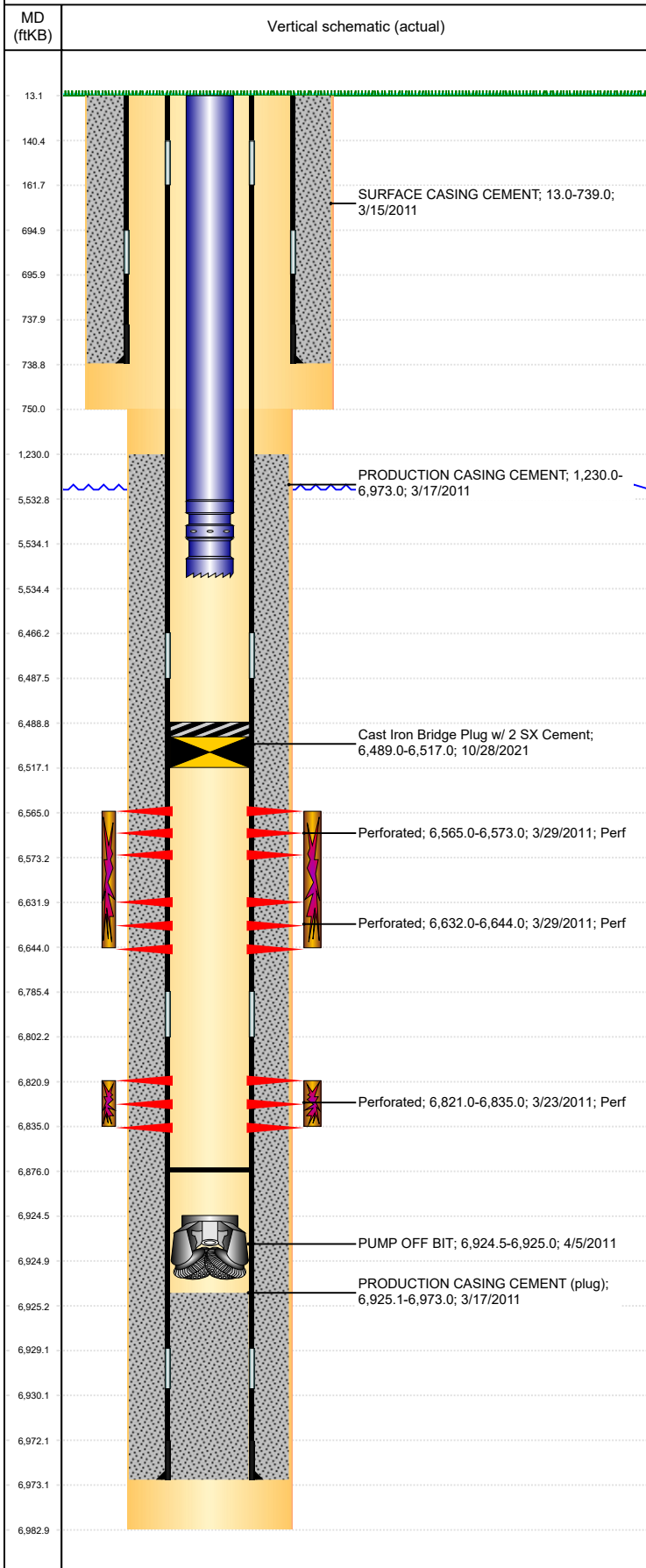


Well Name: HERBST C22-25

VERTICAL, ORIGINAL HOLE, 11/13/2021 10:05:10 AM



Well Header					
API	05-123-31727	Business Unit	DJ BASIN	District	15
Well Config	VERTICAL				
KB - GL / MSL (ft...)	13.00	Spud Date	3/14/2011	P & A Date	
Well Production Status	TA				
SoRT	Yes				

Surface Location (Congressional)							
Qtr 3	Qtr 4	Section	Twinsp...	Twinsp...	Range	Rng E/...	Actual Latitude (°)
SW	SW	22	4	N	64	W	40.29383810
						Actual Longitude (°)	
						-104.54176498	

Wellbore Sections			
Section Des	Size (in)	Act Top, MD (ftKB)	Act Btm, MD (ftKB)
SURFACE	12 1/4	13	750
PRODUCTION	7 7/8	750	6,983

Casing Strings						
Csg Des	Run Date	OD (in)	Wt/Len (lb/ft)	Grade	Top, MD (ftKB)	MD (ftKB)
Surface	3/15/2011	8 5/8	24.00	J-55	13.0	739.0
PRODUCTION	3/17/2011	4 1/2	11.60	M-80	13.0	6,973.0

Cement			
Des	Start Date	Top (ftKB)	Btm (ftKB)
SURFACE CASING CEMENT	3/15/2011	13.0	739.0
PRODUCTION CASING CEMENT	3/17/2011	1,230.0	6,973.0

Zone Statuses					
Zone Name	Status Date	Status	Fluid Type	Job	Prod Method
NIOBRARA	9/8/2017	PR			
NIOBRARA	10/28/2021	TA			
CODELL	3/10/2017	SI			
CODELL	10/28/2021	TA			

Perforation Data					
Linked Zone	Bnch/Stg	Entered Shot Total	Top (ftKB)	Btm (ftKB)	Date
NIOBRARA, ORIGINAL HOLE	A	24	6,565.00	6,573.00	3/29/2011
NIOBRARA, ORIGINAL HOLE	B	24	6,632.00	6,644.00	3/29/2011
CODELL, ORIGINAL HOLE		56	6,821.00	6,835.00	3/23/2011

Stimulation Intervals			
Zone	Start Date	Top (ftKB)	Btm (ftKB)
NIOBRARA, ORIGINAL HOLE	3/29/2011	6,565.0	6,644.0
CODELL, ORIGINAL HOLE	3/29/2011	6,821.0	6,835.0

Other In Hole					
Run Date	Des	Make	OD (in)	Top (ftKB)	Btm (ftKB)
4/5/2011	PUMP OFF BIT		3 7/8	6,924.5	6,925.0
10/28/2021	Cast Iron Bridge Plug w/ 2 SX Cement		3.99	6,489.0	6,517.0

Logs			
Date	Type	Top, MD (ftKB)	Btm, MD (ftKB)
3/17/2011	SPECTRAL DENSITY/Pe/DSN NEUTRON/SP/ARRAY COMPENSATED TRUE RESISTIVITY/SONIC (BSAT)	739.0	6,974.0
3/17/2011	SPECTRAL GAMMA RAY	6,400.0	6,919.0
3/23/2011	CBL/CCL/GR	1,100.0	6,876.0
11/20/2018	GYRO	13.0	6,700.0

Plug Back Total Depths			
Date	Type	Com	Depth (ftKB)
3/18/2011	FLOAT COLLAR		6,929.0
3/23/2011	DEPTH LOGGER		6,876.0