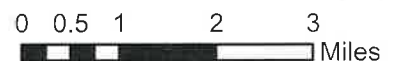


- OGDP Application Lands
- CC\_OGDP\_CountyRoads
- CC\_OGDP\_LE\_Private Roads
- CC\_OGDP\_Intersecting CountyRoads

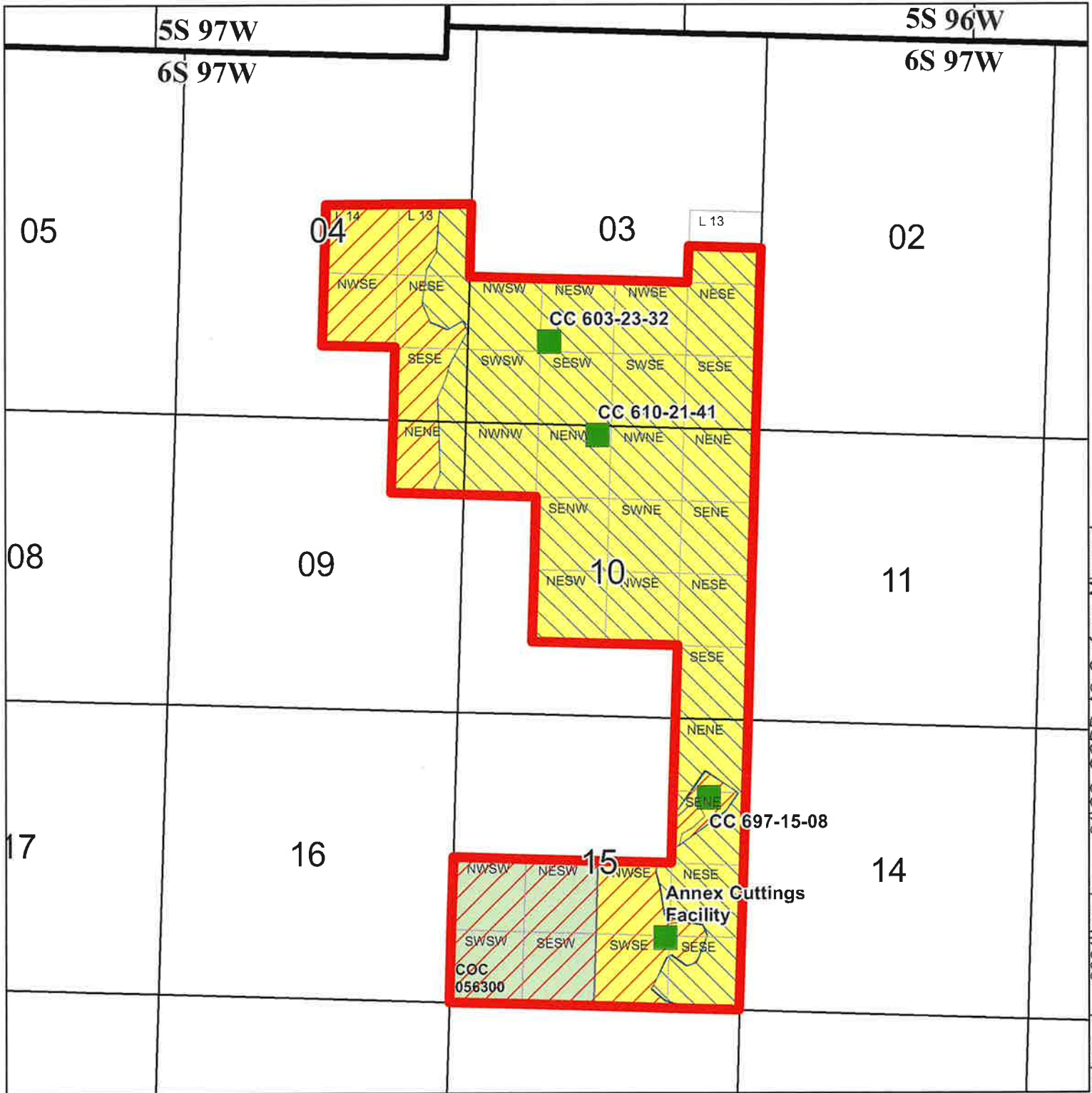
- Interstate 70
- OGDP Sites

**Exhibit A-1**



**OGDP PUBLIC CROSSROAD MAP  
LARAMIE ENERGY, LLC  
GARFIELD COUNTY, COLO.**



Date: 8/3/2021



-  OGD Application Lands
-  OGD Sites
-  Laramie Owned Surface
-  Couey Owned Surface

- Laramie Acreage**
-  FED MINERALS  
100% Laramie Leased
  -  FEE MINERALS  
95% Laramie owned  
5% Laramie leased

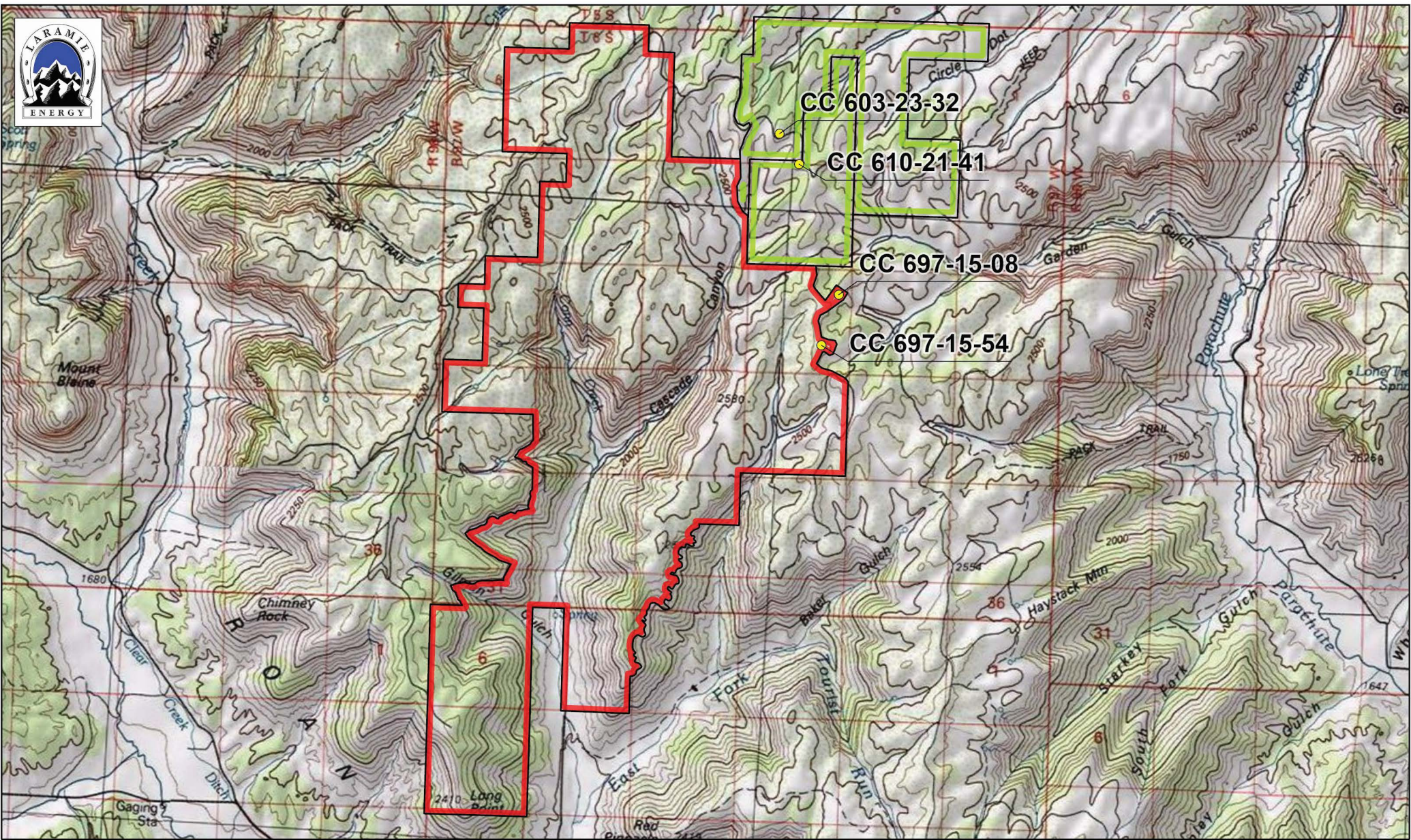
**OGDP MINERAL & SURFACE OWNERSHIP MAP**  
**LARAMIE ENERGY, LLC**  
**T6S R97W GARFIELD COUNTY, COLO.**



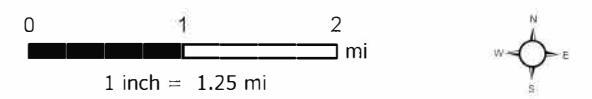
**Exhibit A-2**

Date: 8/3/2021





- Legend**
- Laramie Parcel
  - Couey Parcels
  - Well Site Locations



Project No: 021-039  
 Map By: NDB  
 Date: 3/26/2021

**OGDP TOPOGRAPHIC MAP**  
 CC 697-15-54 ANNEX  
 LARAMIE ENERGY  
 T6S R97W GARFIELD COUNTY, COLO.



330 Grand Avenue, Unit C  
 Grand Junction, CO 81501  
 970-549-1015

Figure  
 2