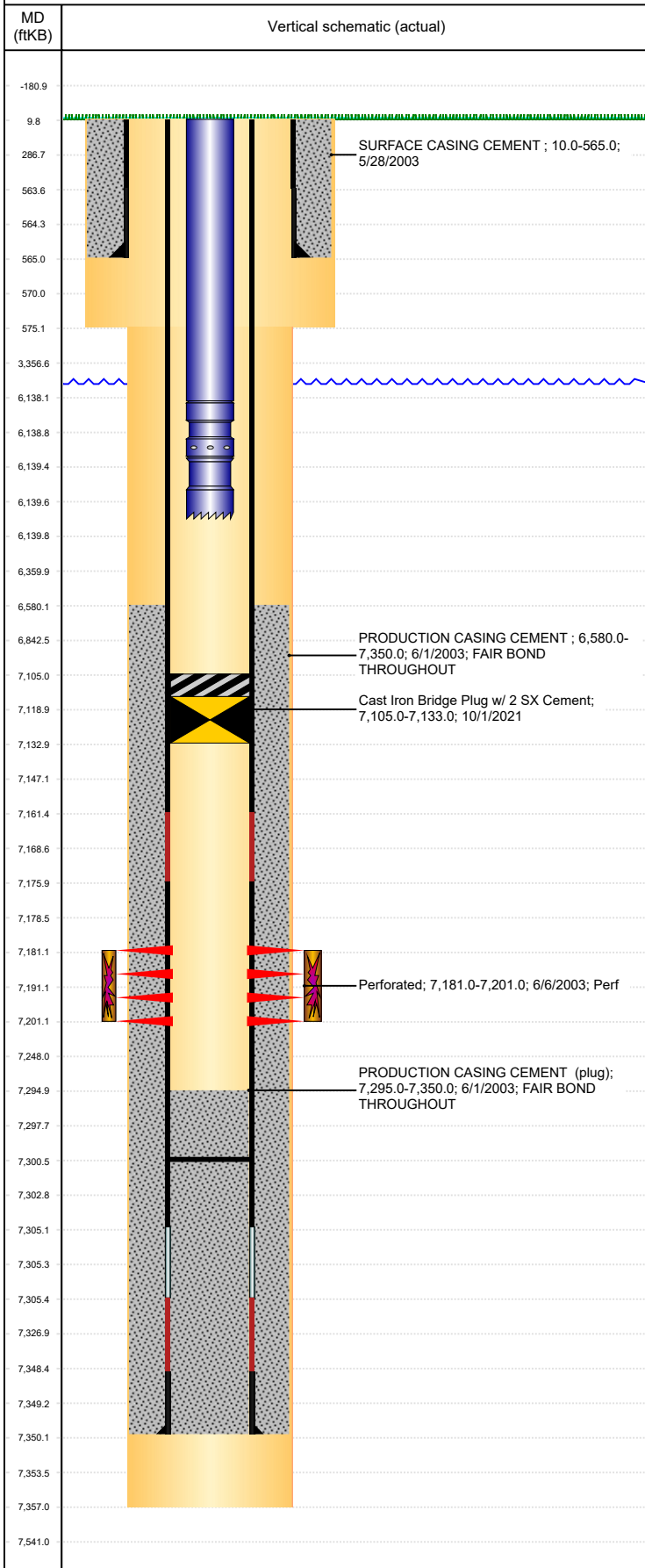


**Well Name: GOLDBERG N14-12**

VERTICAL, ORIGINAL HOLE, 11/13/2021 6:10:00 AM



Well Header										
API 05-123-21165		Business Unit DJ BASIN			District 15		Well Config VERTICAL			
KB - GL / MSL (ft... 10.00		Spud Date 5/27/2003		P & A Date		Well Production Status TA			SoRT Yes	
Comment TD DISCREPANCY: OPEN HOLE LOG = 7357, DRL RPT & ST COMPLETION RPT = 7350										
Surface Location (Congressional)										
Qtr 3 NW	Qtr 4 SW	Section 14	Twnshp 5	Twnsh... N	Range 67	Rng E/... W	Actual Latitude (°) 40.39781287	Actual Longitude (°) -104.86613200		
Wellbore Sections										
Section Des			Size (in)			Act Top, MD (ftKB)		Act Btm, MD (ftKB)		
SURFACE			12 1/4			10		575		
PRODUCTION			7 7/8			575		7,357		
Casing Strings										
Csg Des		Run Date		OD (in)	Wt/Len (lb/ft)	Grade	Top, MD (ftKB)	MD (ftKB)		
Surface		5/28/2003		8 5/8	24.00	J-55	10.0	565.0		
Production		6/1/2003		4 1/2	11.60	M-80	10.0	7,350.0		
Cement										
Des				Start Date		Top (ftKB)		Btm (ftKB)		
SURFACE CASING CEMENT				5/28/2003		10.0		565.0		
PRODUCTION CASING CEMENT				6/1/2003		6,580.0		7,350.0		
Zone Statuses										
Zone Name		Status Date	Status	Fluid Type	Job				Prod Method	
CODELL		12/15/2009	PR	Water					Flowing	
CODELL		10/1/2021	TA	Water						
Perforation Data										
Linked Zone		Bnch/Stg	Entered Shot Total		Top (ftKB)		Btm (ftKB)		Date	
CODELL, ORIGINAL HOLE			80		7,181.00		7,201.00		6/6/2003	
Stimulation Intervals										
Zone			Start Date			Top (ftKB)		Btm (ftKB)		
CODELL, ORIGINAL HOLE			6/18/2003			7,181.0		7,201.0		
CODELL, ORIGINAL HOLE			8/18/2006			7,181.0		7,201.0		
Other In Hole										
Run Date		Des			Make		OD (in)	Top (ftKB)	Btm (ftKB)	
10/1/2021		Cast Iron Bridge Plug w/ 2 SX Cement					4	7,105.0	7,133.0	
Logs										
Date		Type				Top, MD (ftKB)		Btm, MD (ftKB)		
6/1/2003		COMPENSATED DENSITY				4,150.0		7,337.0		
6/1/2003		INDUCTION				565.0		7,357.0		
6/6/2003		CBL/CCL/GR				6,400.0		7,293.0		
7/18/2017		GYRO				0.0		7,100.0		
Plug Back Total Depths										
Date		Type			Com				Depth (ftKB)	
6/11/2013		FILL							7,184.1	
6/11/2013		FILL			C/O FILL.				7,300.5	