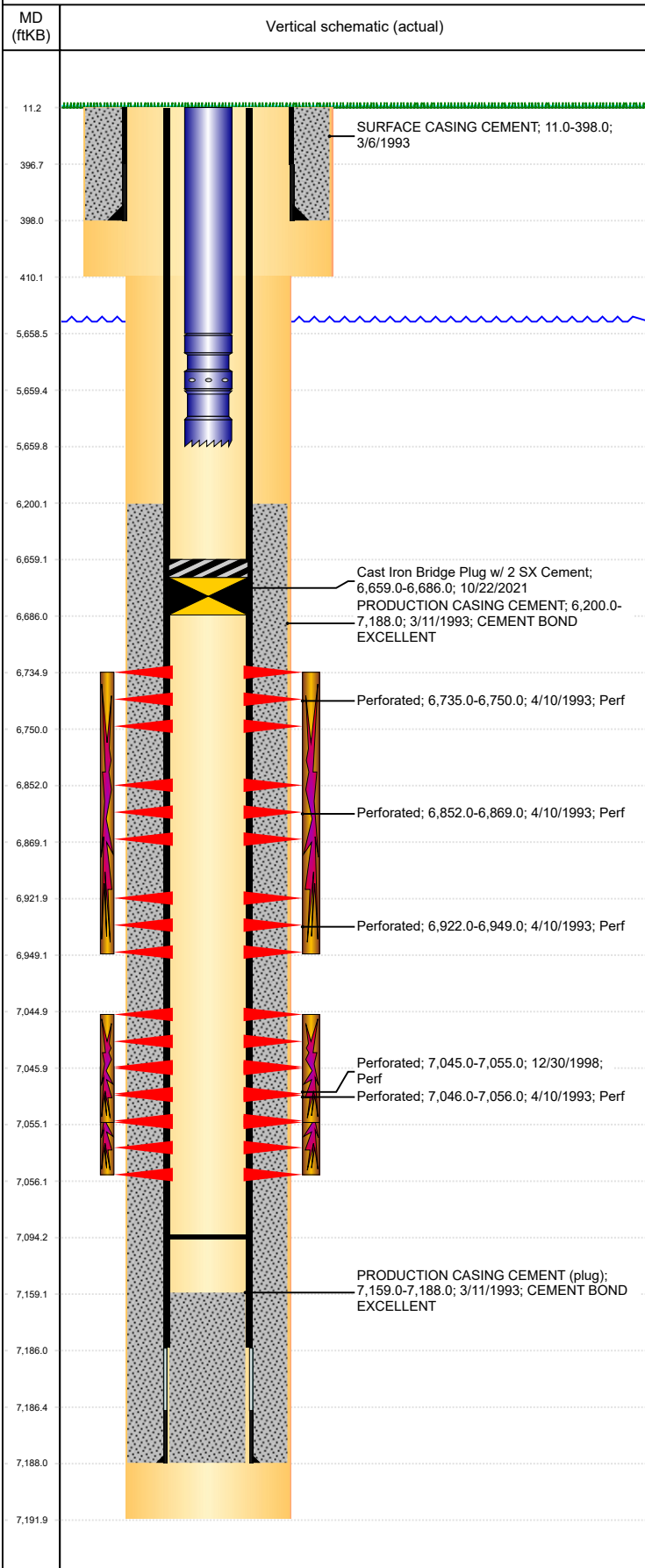


**Well Name: SCHISSLER 04-14**

VERTICAL, ORIGINAL HOLE, 11/13/2021 6:17:08 AM



Well Header										
API 05-123-16831		Business Unit DJ BASIN			District 15		Well Config VERTICAL			
KB - GL / MSL (ft... 11.00		Spud Date 3/6/1993		P & A Date		Well Production Status TA			SoRT Yes	
Comment TD DISCREPANCY: DRL RPT=7192', ST CMP=7235', PROD CSG DEPTH: DRL RPT=7188', ST RPT=7235', SURF CSG SET DEPTH: DRL RPT=398', ST RPT=390'										
Surface Location (Congressional)										
Qtr 3 SE	Qtr 4 NE	Section 4	Twنشp 4	Twنشp... N	Range 65	Rng E/... W	Actual Latitude (°) 40.34364000		Actual Longitude (°) -104.66000000	
Wellbore Sections										
Section Des			Size (in)			Act Top, MD (ftKB)		Act Btm, MD (ftKB)		
SURFACE			12 1/4			11		410		
PRODUCTION			7 7/8			410		7,192		
Casing Strings										
Csg Des			Run Date		OD (in)	Wt/Len (lb/ft)	Grade	Top, MD (ftKB)	MD (ftKB)	
Surface			3/7/1993		8 5/8	24.00		11.0	398.0	
Production			3/11/1993		4 1/2	15.10	N-80	11.0	7,188.0	
Cement										
Des					Start Date		Top (ftKB)		Btm (ftKB)	
SURFACE CASING CEMENT					3/6/1993		11.0		398.0	
PRODUCTION CASING CEMENT					3/11/1993		6,200.0		7,188.0	
Zone Statuses										
Zone Name	Status Date	Status	Fluid Type	Job					Prod Method	
CODELL	5/1/2010	PR	Water	CIBP, 10/21/2021 12:30					Flowing	
CODELL	10/22/2021	TA	Water							
NIOBRARA	1/16/2018	SI								
NIOBRARA	10/22/2021	TA		CIBP, 10/21/2021 12:30						
Perforation Data										
Linked Zone			Bnch/Stg	Entered Shot Total	Top (ftKB)		Btm (ftKB)		Date	
NIOBRARA, ORIGINAL HOLE				5	6,735.00		6,750.00		4/10/1993	
NIOBRARA, ORIGINAL HOLE				6	6,852.00		6,869.00		4/10/1993	
NIOBRARA, ORIGINAL HOLE				5	6,922.00		6,949.00		4/10/1993	
CODELL, ORIGINAL HOLE				10	7,045.00		7,055.00		12/30/1998	
CODELL, ORIGINAL HOLE				10	7,046.00		7,056.00		4/10/1993	
Stimulation Intervals										
Zone					Start Date		Top (ftKB)		Btm (ftKB)	
NIOBRARA, ORIGINAL HOLE					4/21/1993		6,735.0		6,949.0	
CODELL, ORIGINAL HOLE					1/5/1999		7,045.0		7,055.0	
CODELL, ORIGINAL HOLE					4/21/1993		7,046.0		7,056.0	
Other In Hole										
Run Date		Des			Make		OD (in)	Top (ftKB)	Btm (ftKB)	
10/22/2021		Cast Iron Bridge Plug w/ 2 SX Cement					4	6,659.0	6,686.0	
Logs										
Date		Type					Top, MD (ftKB)		Btm, MD (ftKB)	
3/10/1993		COMPENSATED DENSITY					3,800.0		7,200.0	
3/10/1993		INDUCTION					3,800.0		7,200.0	
3/19/1993		CEMENT BOND					6,125.0		7,077.0	
10/13/2011		GYRO					11.0		6,975.0	
Plug Back Total Depths										
Date		Type			Com					Depth (ftKB)
3/7/1993		GUIDE SHOE								7,159.0
12/1/2011		FILL								7,094.2