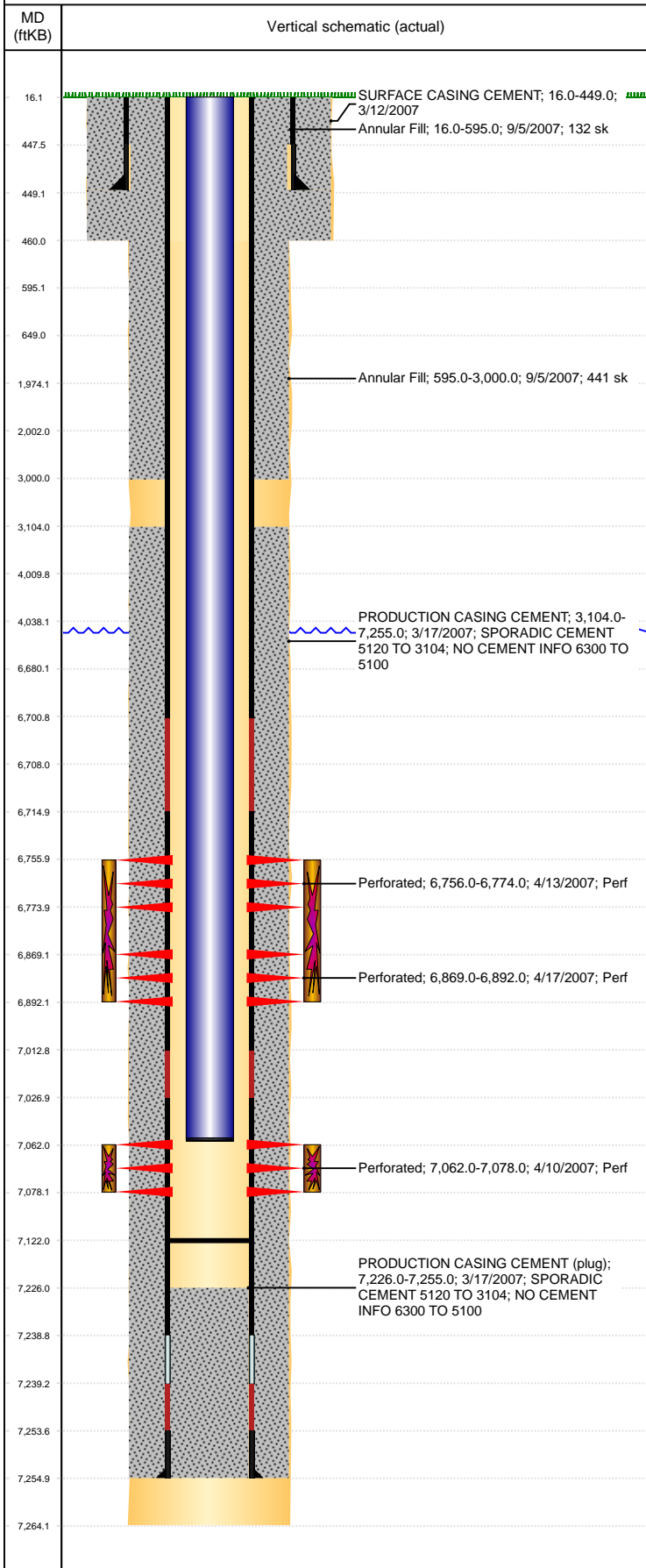


Well Name: WALKER 04-25

VERTICAL, ORIGINAL HOLE, 11/11/2021 4:55:53 PM



Well Header									
API 05-123-24666		Business Unit DJ BASIN			District 15		Well Config VERTICAL		
KB - GL / MSL (ft... 16.00		Spud Date 3/11/2007		P & A Date		Well Production Status PR			SoRT No
Comment CEMENT BASKET @ 4255.37'. 7/27/07- DRILL ON PLUG, CHASED TO 7150', WORKED TO 7170', WOULD NOT GO ANY FURTHER. FIELD OPS NOTICE- FLOWLINES ABANDONED PER RULE 1103, RCVD 6/20/17.									
Surface Location (Congressional)									
Qtr 3 SE	Qtr 4 NW	Section 4	Twnshp 4	Twnsh... N	Range 65	Rng E/... W	Actual Latitude (°) 40.34497000	Actual Longitude (°) -104.67204000	
Wellbore Sections									
Section Des			Size (in)			Act Top, MD (ftKB)		Act Btm, MD (ftKB)	
SURFACE			12 1/4			16		460	
PRODUCTION			7 7/8			460		7,264	
Casing Strings									
Csg Des		Run Date		OD (in)	Wt/Len (lb/ft)	Grade	Top, MD (ftKB)	MD (ftKB)	
Surface		3/12/2007		8 5/8	24.00	?	16.0	449.0	
Production		3/17/2007		4 1/2	11.60	M-80	16.0	7,255.0	
Cement									
Des				Start Date		Top (ftKB)		Btm (ftKB)	
SURFACE CASING CEMENT				3/12/2007		16.0		449.0	
PRODUCTION CASING CEMENT				3/17/2007		3,104.0		7,255.0	
Annular Fill				9/5/2007		16.0		595.0	
Annular Fill				9/5/2007		595.0		3,000.0	
Zone Statuses									
Zone Name	Status Date	Status	Fluid Type	Job			Prod Method		
CODELL	5/15/2007	PR		DRILLING/COMPLETION - ORIGINAL, 3/11/2007...					
NIOBRARA	5/15/2007	PR		DRILLING/COMPLETION - ORIGINAL, 3/11/2007...					
Perforation Data									
Linked Zone		Bnch/Stg	Entered Shot Total	Top (ftKB)		Btm (ftKB)		Date	
NIOBRARA, ORIGINAL HOLE		A	36	6,756.00		6,774.00		4/13/2007	
NIOBRARA, ORIGINAL HOLE		B	92	6,869.00		6,892.00		4/17/2007	
CODELL, ORIGINAL HOLE			64	7,062.00		7,078.00		4/10/2007	
Stimulation Intervals									
Zone			Start Date		Top (ftKB)		Btm (ftKB)		
NIOBRARA, ORIGINAL HOLE			4/20/2007		6,756.0		6,892.0		
CODELL, ORIGINAL HOLE			4/13/2007		7,062.0		7,078.0		
Other In Hole									
Run Date		Des			Make		OD (in)	Top (ftKB)	Btm (ftKB)
Logs									
Date		Type				Top, MD (ftKB)		Btm, MD (ftKB)	
3/16/2007		COMPENSATED DENSITY				3,400.0		7,241.0	
3/16/2007		INDUCTION				449.0		7,261.0	
4/6/2007		CEMENT BOND				6,300.0		7,224.0	
2/14/2013		GYRO				16.0		6,800.0	
Plug Back Total Depths									
Date		Type		Com				Depth (ftKB)	
3/25/2013		FILL		TAG FILL W/ BIT & SCRAPER PRIOR TO SETTING RBP				7,121.8	
6/19/2013		FILL		TAG FILL				7,122.0	