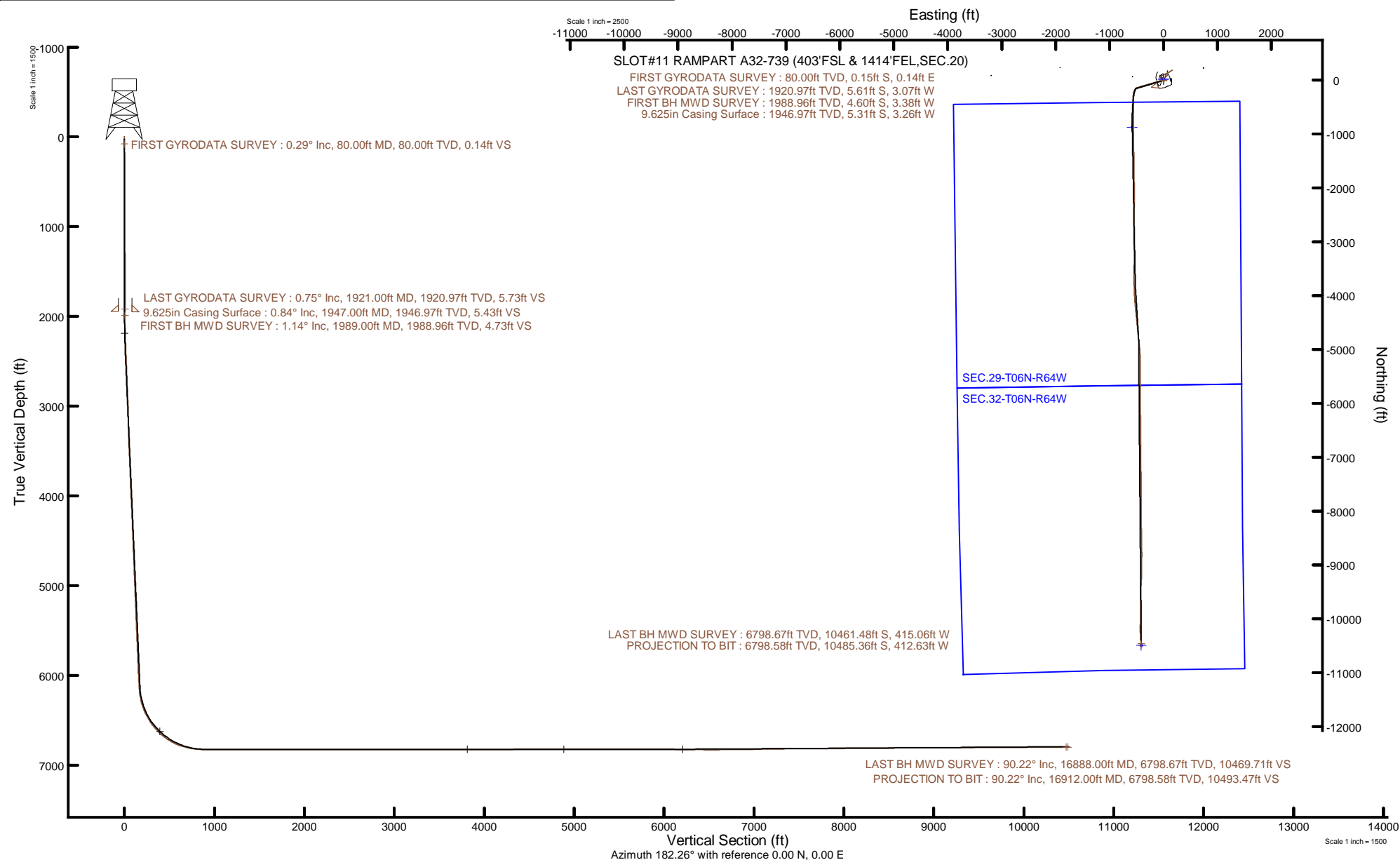


NOBLE ENERGY, INC

Location: COLORADO Slot: SLOT#11 RAMPART A32-739 (403'FSL & 1414'FEL,SEC.20)
Field: WELD COUNTY (NOBLE NAD 83 GRID) Well: RAMPART A32-739
Facility: SEC.20-T06N-R64W Wellbore: RAMPART A32-739 PWB



Plot reference wellpath is RAMPART A32-739 PWP Rev8.0	Grid System: NAD83 / Lambert Colorado SP, Northern Zone (501), US feet
True vertical depths are referenced to H&P 517 (30) (RT)	North Reference: Grid north
Reference wellpath measured depths are referenced to H&P 517 (30) (RT)	Scale: True distance
H&P 517 (30) (RT) to Mean Sea Level: 4736 feet	Coordinates are in feet referenced to Slot
Mean Sea Level to Ground level (At Slot: SLOT#11 RAMPART A32-739 (403'FSL & 1414'FEL,SEC.20)): 0 feet	Depths are in feet
Offset wellpath MDs are referenced to each path's default MD datum	Created by: painsetr on 2021-09-14; Database: WellArchitectDB





Actual Wellpath Report

RAMPART A32-739 AWP

Page 1 of 8



REFERENCE WELLPATH IDENTIFICATION

Operator	NOBLE ENERGY, INC	Well	RAMPART A32-739
Field	WELD COUNTY (NOBLE NAD 83 GRID)	API	0512350930
Facility	SEC.20-T06N-R64W	Wellbore	RAMPART A32-739 AWB
Slot	SLOT#11 RAMPART A32-739 (403'FSL & 1414'FEL,SEC.20)		

REPORT SETUP INFORMATION

Projection System	NAD83 / Lambert Colorado SP, Northern Zone (501), US feet	Software System	WellArchitect® 6.0
North Reference	Grid	User	Painsetr
Scale	0.999964	Report Generated	9/14/2021 at 2:19:58 PM
Convergence at slot	0.60° East	Database	WellArchitectDB

WELLPATH LOCATION

	Local coordinates		Grid coordinates		Geographic coordinates	
	North[ft]	East[ft]	Easting[US ft]	Northing[US ft]	Latitude	Longitude
Slot Location	-232.05	-737.37	3258846.09	1413717.64	40.4653293°	-104.5696916°
Facility Reference Pt			3259583.43	1413949.68	40.4659449°	-104.5670330°
Field Reference Pt			3000000.00	4454105.15	48.7761986°	-105.5000000°

WELLPATH DATUM

Calculation method	Minimum curvature	H&P 517 (30') (RT) to Facility Vertical Datum	4736.00ft
Horizontal Reference Pt	Slot	H&P 517 (30') (RT) to Mean Sea Level	4736.00ft
Vertical Reference Pt	H&P 517 (30') (RT)	H&P 517 (30') (RT) to Ground Level at Slot (SLOT#11 RAMPART A32-739 (403'FSL & 1414'FEL,SEC.20))	4736.00ft
MD Reference Pt	H&P 517 (30') (RT)	Section Origin	N 0.00, E 0.00 ft
Field Vertical Reference	Mean Sea Level	Section Azimuth	182.26°



Actual Wellpath Report

RAMPART A32-739 AWP

Page 2 of 8



REFERENCE WELLPATH IDENTIFICATION

Operator	NOBLE ENERGY, INC	Well	RAMPART A32-739
Field	WELD COUNTY (NOBLE NAD 83 GRID)	API	0512350930
Facility	SEC.20-T06N-R64W	Wellbore	RAMPART A32-739 AWB
Slot	SLOT#11 RAMPART A32-739 (403'FSL & 1414'FEL,SEC.20)		

WELLPATH DATA (179 stations)

MD [ft]	Inclination [°]	Azimuth [°]	TVD [ft]	Vert Sect [ft]	North [ft]	East [ft]	Grid East [US ft]	Grid North [US ft]	Latitude	Longitude	DLS [°/100ft]	Comments
0.00	0.000	135.980	0.00	0.00	0.00	0.00	3258846.09	1413717.64	40.4653293	-104.5696916	0.00	
80.00	0.290	135.980	80.00	0.14	-0.15	0.14	3258846.23	1413717.49	40.4653289	-104.5696911	0.36	FIRST GYRODATA SURVEY
173.00	0.180	130.170	173.00	0.39	-0.41	0.42	3258846.51	1413717.23	40.4653281	-104.5696901	0.12	
264.00	0.470	153.630	264.00	0.81	-0.84	0.69	3258846.78	1413716.80	40.4653270	-104.5696891	0.34	
359.00	0.470	176.130	358.99	1.54	-1.57	0.89	3258846.98	1413716.07	40.4653249	-104.5696885	0.19	
453.00	0.370	177.290	452.99	2.22	-2.26	0.93	3258847.02	1413715.38	40.4653231	-104.5696883	0.11	
547.00	0.560	184.240	546.99	2.98	-3.02	0.91	3258847.00	1413714.62	40.4653210	-104.5696884	0.21	
642.00	0.190	232.070	641.99	3.55	-3.58	0.75	3258846.84	1413714.06	40.4653194	-104.5696890	0.48	
736.00	0.150	250.190	735.99	3.70	-3.72	0.51	3258846.60	1413713.92	40.4653191	-104.5696899	0.07	
831.00	0.480	217.510	830.98	4.07	-4.08	0.15	3258846.24	1413713.56	40.4653181	-104.5696912	0.38	
925.00	0.240	165.440	924.98	4.58	-4.58	-0.04	3258846.05	1413713.06	40.4653167	-104.5696919	0.41	
1020.00	0.160	148.060	1019.98	4.88	-4.89	0.08	3258846.17	1413712.75	40.4653159	-104.5696915	0.10	
1114.00	0.160	202.180	1113.98	5.11	-5.12	0.10	3258846.19	1413712.52	40.4653152	-104.5696914	0.15	
1209.00	0.230	255.610	1208.98	5.29	-5.29	-0.13	3258845.96	1413712.35	40.4653148	-104.5696923	0.20	
1303.00	0.220	239.760	1302.98	5.44	-5.43	-0.47	3258845.62	1413712.21	40.4653144	-104.5696935	0.07	
1398.00	0.250	238.870	1397.98	5.65	-5.63	-0.80	3258845.29	1413712.01	40.4653139	-104.5696947	0.03	
1493.00	0.140	267.810	1492.98	5.78	-5.74	-1.10	3258844.99	1413711.90	40.4653136	-104.5696958	0.15	
1587.00	0.070	44.590	1586.98	5.74	-5.70	-1.17	3258844.92	1413711.94	40.4653137	-104.5696960	0.21	
1681.00	0.280	209.330	1680.98	5.90	-5.86	-1.24	3258844.85	1413711.78	40.4653132	-104.5696963	0.37	
1776.00	0.450	259.710	1775.98	6.19	-6.13	-1.72	3258844.37	1413711.51	40.4653125	-104.5696980	0.36	
1871.00	0.660	293.930	1870.97	6.07	-5.97	-2.59	3258843.50	1413711.67	40.4653130	-104.5697011	0.40	
1921.00	0.750	318.490	1920.97	5.73	-5.61	-3.07	3258843.02	1413712.03	40.4653140	-104.5697029	0.63	LAST GYRODATA SURVEY
1989.00	1.140	359.310	1988.96	4.73	-4.60	-3.38	3258842.71	1413713.04	40.4653167	-104.5697039	1.11	FIRST BH MWD SURVEY
2083.00	3.110	255.690	2082.91	4.52	-4.30	-5.86	3258840.23	1413713.34	40.4653177	-104.5697128	3.78	
2178.00	4.680	253.610	2177.69	6.50	-6.03	-12.07	3258834.02	1413711.61	40.4653131	-104.5697352	1.66	
2273.00	6.390	253.390	2272.24	9.45	-8.63	-20.86	3258825.23	1413709.01	40.4653062	-104.5697669	1.80	
2367.00	7.600	254.240	2365.54	13.06	-11.82	-31.85	3258814.24	1413705.82	40.4652978	-104.5698065	1.29	
2462.00	7.500	255.180	2459.72	16.83	-15.11	-43.89	3258802.20	1413702.53	40.4652891	-104.5698499	0.17	
2556.00	7.480	254.110	2552.92	20.53	-18.35	-55.71	3258790.38	1413699.29	40.4652805	-104.5698925	0.15	
2651.00	7.710	255.540	2647.08	24.29	-21.64	-67.83	3258778.27	1413696.00	40.4652718	-104.5699362	0.31	

REFERENCE WELLPATH IDENTIFICATION

Operator	NOBLE ENERGY, INC	Well	RAMPART A32-739
Field	WELD COUNTY (NOBLE NAD 83 GRID)	API	0512350930
Facility	SEC.20-T06N-R64W	Wellbore	RAMPART A32-739 AWB
Slot	SLOT#11 RAMPART A32-739 (403'FSL & 1414'FEL,SEC.20)		

WELLPATH DATA (179 stations)

MD [ft]	Inclination [°]	Azimuth [°]	TVD [ft]	Vert Sect [ft]	North [ft]	East [ft]	Grid East [US ft]	Grid North [US ft]	Latitude	Longitude	DLS [°/100ft]	Comments
2745.00	7.390	256.080	2740.27	27.79	-24.67	-79.80	3258766.29	1413692.97	40.4652639	-104.5699793	0.35	
2840.00	7.700	252.930	2834.45	31.60	-28.00	-91.81	3258754.28	1413689.64	40.4652551	-104.5700226	0.54	
2934.00	7.190	256.920	2927.65	35.24	-31.18	-103.56	3258742.53	1413686.46	40.4652467	-104.5700650	0.77	
3029.00	8.230	265.370	3021.80	37.63	-33.08	-116.13	3258729.96	1413684.56	40.4652418	-104.5701102	1.62	
3124.00	7.960	256.100	3115.85	40.27	-35.21	-129.30	3258716.80	1413682.43	40.4652364	-104.5701576	1.40	
3218.00	7.750	257.360	3208.97	43.72	-38.16	-141.80	3258704.30	1413679.48	40.4652286	-104.5702026	0.29	
3313.00	6.340	258.910	3303.25	46.57	-40.57	-153.20	3258692.90	1413677.07	40.4652223	-104.5702437	1.50	
3408.00	5.680	255.110	3397.73	49.17	-42.79	-162.89	3258683.21	1413674.86	40.4652165	-104.5702786	0.81	
3502.00	7.010	252.950	3491.15	52.44	-45.66	-172.87	3258673.23	1413671.98	40.4652089	-104.5703145	1.44	
3597.00	7.780	253.960	3585.36	56.37	-49.14	-184.59	3258661.51	1413668.50	40.4651997	-104.5703568	0.82	
3691.00	7.700	253.680	3678.51	60.38	-52.67	-196.75	3258649.35	1413664.97	40.4651904	-104.5704006	0.09	
3786.00	7.980	254.330	3772.62	64.44	-56.24	-209.21	3258636.89	1413661.41	40.4651810	-104.5704455	0.31	
3881.00	7.590	253.450	3866.74	68.49	-59.80	-221.57	3258624.53	1413657.84	40.4651715	-104.5704901	0.43	
3975.00	7.710	253.800	3959.90	72.49	-63.33	-233.57	3258612.52	1413654.31	40.4651622	-104.5705334	0.14	
4070.00	7.580	253.540	4054.06	76.51	-66.89	-245.70	3258600.40	1413650.76	40.4651528	-104.5705771	0.14	
4165.00	7.550	253.170	4148.23	80.57	-70.47	-257.69	3258588.41	1413647.17	40.4651433	-104.5706203	0.06	
4259.00	7.480	253.500	4241.43	84.55	-73.99	-269.46	3258576.64	1413643.65	40.4651339	-104.5706627	0.09	
4354.00	7.060	253.700	4335.66	88.40	-77.39	-281.00	3258565.10	1413640.25	40.4651250	-104.5707043	0.44	
4449.00	7.920	254.190	4429.85	92.29	-80.81	-292.90	3258553.20	1413636.83	40.4651159	-104.5707472	0.91	
4543.00	7.640	253.320	4522.99	96.32	-84.37	-305.11	3258540.99	1413633.27	40.4651065	-104.5707913	0.32	
4638.00	7.340	255.260	4617.17	100.15	-87.73	-317.03	3258529.07	1413629.92	40.4650976	-104.5708342	0.41	
4733.00	6.970	257.550	4711.44	103.38	-90.51	-328.53	3258517.57	1413627.13	40.4650903	-104.5708756	0.49	
4827.00	7.430	253.120	4804.69	106.83	-93.51	-339.91	3258506.19	1413624.14	40.4650824	-104.5709167	0.77	
4922.00	7.480	253.330	4898.89	110.84	-97.06	-351.72	3258494.39	1413620.58	40.4650730	-104.5709592	0.06	
5017.00	7.660	253.890	4993.06	114.85	-100.59	-363.72	3258482.38	1413617.05	40.4650636	-104.5710025	0.20	
5111.00	7.180	251.530	5086.28	118.90	-104.19	-375.31	3258470.79	1413613.45	40.4650541	-104.5710443	0.60	
5206.00	6.200	253.790	5180.63	122.63	-107.51	-385.87	3258460.23	1413610.14	40.4650453	-104.5710823	1.07	
5300.00	6.430	253.030	5274.06	125.97	-110.46	-395.78	3258450.33	1413607.18	40.4650375	-104.5711181	0.26	
5395.00	6.500	253.640	5368.45	129.44	-113.53	-406.03	3258440.08	1413604.12	40.4650294	-104.5711550	0.10	
5490.00	7.460	253.730	5462.75	133.11	-116.77	-417.11	3258429.00	1413600.87	40.4650208	-104.5711949	1.01	

REFERENCE WELLPATH IDENTIFICATION

Operator	NOBLE ENERGY, INC	Well	RAMPART A32-739
Field	WELD COUNTY (NOBLE NAD 83 GRID)	API	0512350930
Facility	SEC.20-T06N-R64W	Wellbore	RAMPART A32-739 AWB
Slot	SLOT#11 RAMPART A32-739 (403'FSL & 1414'FEL,SEC.20)		

WELLPATH DATA (179 stations)

MD [ft]	Inclination [°]	Azimuth [°]	TVD [ft]	Vert Sect [ft]	North [ft]	East [ft]	Grid East [US ft]	Grid North [US ft]	Latitude	Longitude	DLS [°/100ft]	Comments
5584.00	7.930	253.340	5555.90	137.15	-120.34	-429.18	3258416.93	1413597.31	40.4650113	-104.5712384	0.50	
5679.00	7.960	253.570	5649.99	141.39	-124.08	-441.76	3258404.34	1413593.57	40.4650014	-104.5712838	0.05	
5773.00	7.660	253.380	5743.12	145.50	-127.71	-454.01	3258392.10	1413589.93	40.4649918	-104.5713280	0.32	
5868.00	7.520	253.180	5837.29	149.58	-131.32	-466.03	3258380.08	1413586.32	40.4649823	-104.5713713	0.15	
5962.00	7.230	252.730	5930.51	153.57	-134.86	-477.56	3258368.54	1413582.79	40.4649729	-104.5714129	0.31	
6057.00	7.380	254.500	6024.74	157.43	-138.26	-489.15	3258356.96	1413579.38	40.4649639	-104.5714546	0.28	
6151.00	8.060	250.470	6117.89	161.71	-142.08	-501.18	3258344.93	1413575.57	40.4649537	-104.5714980	0.92	
6246.00	11.570	228.480	6211.51	170.78	-150.62	-514.60	3258331.51	1413567.02	40.4649307	-104.5715466	5.34	
6341.00	17.540	212.890	6303.46	189.71	-168.98	-529.52	3258316.59	1413548.66	40.4648807	-104.5716009	7.46	
6435.00	23.290	201.710	6391.55	219.46	-198.18	-544.11	3258302.00	1413519.47	40.4648010	-104.5716544	7.37	
6530.00	29.640	192.230	6476.59	260.37	-238.64	-556.05	3258290.06	1413479.00	40.4646903	-104.5716988	8.01	
6625.00	37.740	183.470	6555.61	312.69	-290.74	-562.80	3258283.31	1413426.91	40.4645475	-104.5717250	9.92	
6719.00	44.930	177.140	6626.18	374.62	-352.72	-562.89	3258283.23	1413364.94	40.4643774	-104.5717277	8.84	
6814.00	52.770	178.350	6688.64	445.88	-424.14	-560.12	3258285.99	1413293.52	40.4641813	-104.5717204	8.31	
6908.00	60.980	179.180	6739.97	524.39	-502.78	-558.45	3258287.66	1413214.88	40.4639654	-104.5717174	8.77	
7003.00	69.660	180.320	6779.60	610.54	-589.01	-558.10	3258288.01	1413128.65	40.4637287	-104.5717194	9.20	
7097.00	77.120	180.210	6806.45	700.50	-679.03	-558.52	3258287.59	1413038.64	40.4634816	-104.5717243	7.94	
7192.00	85.190	180.120	6821.05	794.23	-772.82	-558.79	3258287.32	1412944.85	40.4632242	-104.5717288	8.50	
7287.00	90.150	180.230	6824.91	889.06	-867.71	-559.08	3258287.03	1412849.96	40.4629637	-104.5717334	5.22	
7381.00	89.940	179.700	6824.83	982.99	-961.71	-559.02	3258287.09	1412755.97	40.4627057	-104.5717367	0.61	
7476.00	89.850	179.620	6825.01	1077.89	-1056.71	-558.46	3258287.66	1412660.97	40.4624450	-104.5717383	0.13	
7570.00	89.850	179.120	6825.25	1171.77	-1150.70	-557.42	3258288.69	1412566.98	40.4621870	-104.5717381	0.53	
7665.00	89.750	178.930	6825.59	1266.62	-1245.69	-555.81	3258290.31	1412472.00	40.4619262	-104.5717358	0.23	
7759.00	89.970	178.610	6825.81	1360.44	-1339.66	-553.79	3258292.32	1412378.03	40.4616682	-104.5717321	0.41	
7853.00	90.090	179.050	6825.77	1454.27	-1433.64	-551.87	3258294.24	1412284.05	40.4614102	-104.5717288	0.49	
7948.00	89.970	179.370	6825.72	1549.14	-1528.64	-550.56	3258295.55	1412189.06	40.4611494	-104.5717276	0.36	
8042.00	90.000	179.180	6825.74	1643.01	-1622.63	-549.37	3258296.74	1412095.07	40.4608914	-104.5717269	0.20	
8137.00	89.850	178.480	6825.86	1737.84	-1717.61	-547.43	3258298.68	1412000.10	40.4606307	-104.5717235	0.75	
8232.00	90.060	180.010	6825.94	1832.71	-1812.60	-546.18	3258299.93	1411905.11	40.4603699	-104.5717226	1.63	
8326.00	89.910	179.130	6825.96	1926.60	-1906.59	-545.47	3258300.64	1411811.12	40.4601119	-104.5717236	0.95	

REFERENCE WELLPATH IDENTIFICATION

Operator	NOBLE ENERGY, INC	Well	RAMPART A32-739
Field	WELD COUNTY (NOBLE NAD 83 GRID)	API	0512350930
Facility	SEC.20-T06N-R64W	Wellbore	RAMPART A32-739 AWB
Slot	SLOT#11 RAMPART A32-739 (403'FSL & 1414'FEL,SEC.20)		

WELLPATH DATA (179 stations)

MD [ft]	Inclination [°]	Azimuth [°]	TVD [ft]	Vert Sect [ft]	North [ft]	East [ft]	Grid East [US ft]	Grid North [US ft]	Latitude	Longitude	DLS [°/100ft]	Comments
8421.00	89.970	178.540	6826.06	2021.43	-2001.57	-543.54	3258302.57	1411716.14	40.4598512	-104.5717202	0.62	
8515.00	90.030	178.970	6826.06	2115.26	-2095.55	-541.50	3258304.61	1411622.17	40.4595932	-104.5717164	0.46	
8610.00	89.970	181.010	6826.06	2210.18	-2190.54	-541.48	3258304.63	1411527.18	40.4593324	-104.5717199	2.15	
8705.00	90.000	181.470	6826.09	2305.16	-2285.52	-543.54	3258302.57	1411432.20	40.4590718	-104.5717309	0.49	
8799.00	90.150	181.810	6825.97	2399.16	-2379.48	-546.23	3258299.88	1411338.25	40.4588140	-104.5717441	0.40	
8894.00	90.000	181.230	6825.84	2494.15	-2474.45	-548.75	3258297.36	1411243.28	40.4585534	-104.5717567	0.63	
8989.00	90.000	180.760	6825.84	2589.12	-2569.44	-550.40	3258295.71	1411148.30	40.4582927	-104.5717662	0.49	
9083.00	90.030	180.820	6825.82	2683.09	-2663.43	-551.69	3258294.42	1411054.32	40.4580348	-104.5717744	0.07	
9178.00	89.880	179.820	6825.89	2778.04	-2758.42	-552.22	3258293.89	1410959.32	40.4577741	-104.5717799	1.06	
9367.00	89.880	178.410	6826.29	2966.75	-2947.40	-549.30	3258296.81	1410770.36	40.4572553	-104.5717765	0.75	
9461.00	89.910	177.910	6826.46	3060.51	-3041.35	-546.29	3258299.82	1410676.41	40.4569974	-104.5717692	0.53	
9556.00	89.820	178.210	6826.68	3155.25	-3136.29	-543.07	3258303.04	1410581.47	40.4567367	-104.5717612	0.33	
9650.00	89.820	180.560	6826.98	3249.13	-3230.28	-542.06	3258304.05	1410487.48	40.4564787	-104.5717611	2.50	
9745.00	89.880	181.170	6827.23	3344.10	-3325.27	-543.50	3258302.61	1410392.50	40.4562180	-104.5717698	0.65	
9839.00	90.150	181.170	6827.20	3438.08	-3419.25	-545.42	3258300.70	1410298.52	40.4559601	-104.5717803	0.29	
9934.00	89.690	180.800	6827.34	3533.06	-3514.23	-547.05	3258299.06	1410203.54	40.4556994	-104.5717897	0.62	
10029.00	89.750	179.600	6827.80	3627.99	-3609.23	-547.38	3258298.73	1410108.55	40.4554387	-104.5717945	1.26	
10123.00	90.460	179.830	6827.63	3721.90	-3703.23	-546.91	3258299.20	1410014.55	40.4551807	-104.5717963	0.79	
10218.00	90.090	178.810	6827.17	3816.77	-3798.22	-545.79	3258300.33	1409919.57	40.4549199	-104.5717958	1.14	
10312.00	91.050	178.320	6826.24	3910.57	-3892.18	-543.43	3258302.68	1409825.61	40.4546620	-104.5717909	1.15	
10407.00	90.000	176.340	6825.37	4005.21	-3987.07	-539.01	3258307.10	1409730.72	40.4544014	-104.5717786	2.36	
10502.00	90.430	176.040	6825.01	4099.68	-4081.86	-532.69	3258313.42	1409635.94	40.4541410	-104.5717595	0.55	
10596.00	90.430	174.340	6824.30	4192.96	-4175.52	-524.81	3258321.30	1409542.28	40.4538837	-104.5717347	1.81	
10690.00	90.550	174.270	6823.50	4286.05	-4269.05	-515.48	3258330.63	1409448.75	40.4536267	-104.5717047	0.15	
10785.00	90.370	174.370	6822.74	4380.14	-4363.59	-506.08	3258340.03	1409354.22	40.4533670	-104.5716745	0.22	
10879.00	90.550	174.320	6821.98	4473.24	-4457.12	-496.82	3258349.29	1409260.69	40.4531100	-104.5716447	0.20	
10974.00	90.490	174.330	6821.12	4567.32	-4551.66	-487.43	3258358.68	1409166.16	40.4528503	-104.5716145	0.06	
11068.00	90.460	174.440	6820.34	4660.44	-4645.20	-478.23	3258367.88	1409072.62	40.4525933	-104.5715850	0.12	
11163.00	90.740	174.070	6819.35	4754.50	-4739.72	-468.72	3258377.39	1408978.10	40.4523336	-104.5715544	0.49	
11257.00	90.400	174.320	6818.41	4847.57	-4833.23	-459.21	3258386.89	1408884.59	40.4520766	-104.5715237	0.45	

REFERENCE WELLPATH IDENTIFICATION			
Operator	NOBLE ENERGY, INC	Well	RAMPART A32-739
Field	WELD COUNTY (NOBLE NAD 83 GRID)	API	0512350930
Facility	SEC.20-T06N-R64W	Wellbore	RAMPART A32-739 AWB
Slot	SLOT#11 RAMPART A32-739 (403'FSL & 1414'FEL,SEC.20)		

WELLPATH DATA (179 stations)												
MD [ft]	Inclination [°]	Azimuth [°]	TVD [ft]	Vert Sect [ft]	North [ft]	East [ft]	Grid East [US ft]	Grid North [US ft]	Latitude	Longitude	DLS [°/100ft]	Comments
11352.00	89.780	174.110	6818.26	4941.64	-4927.75	-449.64	3258396.47	1408790.08	40.4518169	-104.5714929	0.69	
11446.00	90.030	176.250	6818.42	5034.91	-5021.41	-441.74	3258404.37	1408696.42	40.4515596	-104.5714680	2.29	
11541.00	89.570	177.280	6818.75	5129.48	-5116.26	-436.38	3258409.73	1408601.58	40.4512991	-104.5714523	1.19	
11635.00	89.780	179.360	6819.28	5223.25	-5210.21	-433.62	3258412.48	1408507.63	40.4510412	-104.5714460	2.22	
11730.00	89.850	180.220	6819.59	5318.16	-5305.21	-433.28	3258412.83	1408412.64	40.4507804	-104.5714483	0.91	
11825.00	89.880	180.010	6819.81	5413.09	-5400.21	-433.47	3258412.64	1408317.64	40.4505197	-104.5714525	0.22	
11919.00	89.780	180.000	6820.09	5507.02	-5494.21	-433.47	3258412.63	1408223.64	40.4502617	-104.5714561	0.11	
12014.00	90.030	179.800	6820.25	5601.94	-5589.20	-433.31	3258412.80	1408128.65	40.4500009	-104.5714591	0.34	
12108.00	90.090	179.850	6820.15	5695.85	-5683.20	-433.02	3258413.09	1408034.65	40.4497429	-104.5714616	0.08	
12203.00	89.350	179.710	6820.62	5790.76	-5778.20	-432.66	3258413.45	1407939.66	40.4494822	-104.5714639	0.79	
12298.00	89.290	179.740	6821.74	5885.66	-5873.19	-432.20	3258413.91	1407844.67	40.4492214	-104.5714658	0.07	
12392.00	90.030	179.930	6822.30	5979.58	-5967.19	-431.93	3258414.18	1407750.68	40.4489634	-104.5714684	0.81	
12487.00	89.480	179.640	6822.71	6074.49	-6062.19	-431.57	3258414.53	1407655.68	40.4487027	-104.5714707	0.65	
12581.00	88.890	179.060	6824.04	6168.35	-6156.17	-430.51	3258415.60	1407561.70	40.4484447	-104.5714704	0.88	
12676.00	89.230	178.420	6825.60	6263.16	-6251.14	-428.42	3258417.69	1407466.74	40.4481840	-104.5714664	0.76	
12771.00	89.200	178.430	6826.90	6357.94	-6346.09	-425.81	3258420.30	1407371.79	40.4479233	-104.5714606	0.03	
12865.00	88.740	178.980	6828.59	6451.74	-6440.05	-423.68	3258422.42	1407277.83	40.4476653	-104.5714565	0.76	
12960.00	90.800	180.520	6828.97	6546.64	-6535.04	-423.27	3258422.84	1407182.85	40.4474046	-104.5714586	2.71	
13054.00	90.830	180.680	6827.64	6640.60	-6629.03	-424.25	3258421.85	1407088.87	40.4471466	-104.5714657	0.17	
13149.00	90.740	180.230	6826.34	6735.54	-6724.02	-425.01	3258421.10	1406993.88	40.4468859	-104.5714720	0.48	
13338.00	90.680	179.590	6823.99	6924.37	-6913.00	-424.71	3258421.40	1406804.90	40.4463672	-104.5714780	0.34	
13433.00	90.920	179.560	6822.67	7019.25	-7007.99	-424.01	3258422.10	1406709.92	40.4461065	-104.5714790	0.25	
13527.00	90.830	179.350	6821.23	7113.13	-7101.97	-423.11	3258422.99	1406615.94	40.4458485	-104.5714794	0.24	
13621.00	90.830	179.130	6819.87	7206.99	-7195.95	-421.87	3258424.24	1406521.96	40.4455905	-104.5714784	0.23	
13716.00	90.740	179.270	6818.57	7301.84	-7290.94	-420.54	3258425.57	1406426.98	40.4453298	-104.5714772	0.18	
13810.00	90.920	179.380	6817.21	7395.71	-7384.92	-419.43	3258426.67	1406333.00	40.4450718	-104.5714768	0.22	
13905.00	90.680	179.020	6815.88	7490.57	-7479.90	-418.11	3258428.00	1406238.02	40.4448110	-104.5714756	0.46	
14000.00	90.280	179.870	6815.09	7585.45	-7574.89	-417.19	3258428.92	1406143.04	40.4445503	-104.5714759	0.99	
14094.00	89.780	179.450	6815.04	7679.35	-7668.89	-416.63	3258429.48	1406049.04	40.4442923	-104.5714774	0.69	
14189.00	90.650	179.590	6814.68	7774.24	-7763.89	-415.83	3258430.27	1405954.05	40.4440315	-104.5714781	0.93	

REFERENCE WELLPATH IDENTIFICATION

Operator	NOBLE ENERGY, INC	Well	RAMPART A32-739
Field	WELD COUNTY (NOBLE NAD 83 GRID)	API	0512350930
Facility	SEC.20-T06N-R64W	Wellbore	RAMPART A32-739 AWB
Slot	SLOT#11 RAMPART A32-739 (403'FSL & 1414'FEL,SEC.20)		

WELLPATH DATA (179 stations) † = interpolated, ‡ = extrapolated station

MD [ft]	Inclination [°]	Azimuth [°]	TVD [ft]	Vert Sect [ft]	North [ft]	East [ft]	Grid East [US ft]	Grid North [US ft]	Latitude	Longitude	DLS [°/100ft]	Comments
14283.00	90.120	178.910	6814.05	7868.11	-7857.87	-414.60	3258431.50	1405860.07	40.4437735	-104.5714772	0.92	
14378.00	90.370	180.240	6813.64	7963.00	-7952.87	-413.90	3258432.21	1405765.08	40.4435128	-104.5714783	1.42	
14472.00	91.540	180.360	6812.08	8056.93	-8046.85	-414.39	3258431.72	1405671.09	40.4432548	-104.5714836	1.25	
14567.00	90.620	179.600	6810.28	8151.84	-8141.83	-414.36	3258431.75	1405576.12	40.4429941	-104.5714870	1.26	
14661.00	90.310	179.540	6809.52	8245.73	-8235.83	-413.65	3258432.46	1405482.13	40.4427361	-104.5714880	0.34	
14756.00	90.520	179.180	6808.83	8340.61	-8330.82	-412.59	3258433.52	1405387.14	40.4424753	-104.5714878	0.44	
14850.00	90.150	179.140	6808.28	8434.47	-8424.81	-411.21	3258434.89	1405293.15	40.4422173	-104.5714864	0.40	
14945.00	90.280	178.810	6807.93	8529.31	-8519.79	-409.51	3258436.59	1405198.17	40.4419566	-104.5714839	0.37	
15039.00	90.520	178.810	6807.27	8623.14	-8613.77	-407.56	3258438.55	1405104.20	40.4416986	-104.5714804	0.26	
15134.00	90.000	178.480	6806.84	8717.95	-8708.74	-405.31	3258440.79	1405009.23	40.4414378	-104.5714759	0.65	
15228.00	90.310	180.070	6806.59	8811.82	-8802.73	-404.12	3258441.98	1404915.25	40.4411798	-104.5714751	1.72	
15323.00	90.370	180.610	6806.02	8906.76	-8897.73	-404.69	3258441.42	1404820.25	40.4409191	-104.5714807	0.57	
15417.00	90.370	180.420	6805.41	9000.72	-8991.72	-405.53	3258440.57	1404726.26	40.4406611	-104.5714873	0.20	
15512.00	90.310	180.310	6804.85	9095.66	-9086.72	-406.14	3258439.97	1404631.27	40.4404004	-104.5714931	0.13	
15607.00	90.220	182.150	6804.41	9190.64	-9181.69	-408.18	3258437.93	1404536.30	40.4401398	-104.5715040	1.94	
15701.00	90.150	184.310	6804.11	9284.62	-9275.53	-413.47	3258432.63	1404442.46	40.4398824	-104.5715265	2.30	
15796.00	90.460	183.380	6803.60	9379.58	-9370.32	-419.84	3258426.26	1404347.68	40.4396224	-104.5715530	1.03	
15885.00	90.120	180.260	6802.65	9568.55	-9559.20	-425.84	3258420.26	1404158.81	40.4391042	-104.5715816	1.66	
16080.00	90.120	178.990	6802.45	9663.45	-9654.19	-425.22	3258420.88	1404063.82	40.4388434	-104.5715830	1.34	
16174.00	90.120	178.360	6802.25	9757.27	-9748.17	-423.05	3258423.06	1403969.85	40.4385854	-104.5715787	0.67	
16269.00	90.400	181.160	6801.82	9852.16	-9843.16	-422.65	3258423.45	1403874.86	40.4383247	-104.5715808	2.96	
16363.00	90.460	181.460	6801.11	9946.15	-9937.13	-424.80	3258421.31	1403780.89	40.4380668	-104.5715921	0.33	
16458.00	90.400	181.450	6800.40	10041.14	-10032.09	-427.21	3258418.89	1403685.93	40.4378062	-104.5716043	0.06	
16552.00	90.250	181.690	6799.87	10135.13	-10126.06	-429.79	3258416.32	1403591.97	40.4375484	-104.5716171	0.30	
16646.00	90.120	179.130	6799.56	10229.07	-10220.05	-430.46	3258415.65	1403497.98	40.4372904	-104.5716231	2.73	
16741.00	90.250	176.640	6799.26	10323.79	-10314.97	-426.95	3258419.15	1403403.06	40.4370298	-104.5716140	2.62	
16836.00	90.220	174.940	6798.87	10418.18	-10409.71	-419.98	3258426.13	1403308.32	40.4367695	-104.5715925	1.79	
16888.00	90.220	174.200	6798.67	10469.71	-10461.48	-415.06	3258431.05	1403256.56	40.4366273	-104.5715768	1.42	LAST BH MWD SURVEY
16912.00†	90.220	174.200	6798.58	10493.47	-10485.36	-412.63	3258433.47	1403232.68	40.4365617	-104.5715690	0.00	PROJECTION TO BIT

HOLE & CASING SECTIONS - Ref Wellbore: RAMPART A32-739 AWB Ref Wellpath: RAMPART A32-739 AWP

String/Diameter	Start MD [ft]	End MD [ft]	Interval [ft]	Start TVD [ft]	End TVD [ft]	Start N/S [ft]	Start E/W [ft]	End N/S [ft]	End E/W [ft]
9.625in Casing Surface	30.00	1947.00	1917.00	30.00	1946.97	-0.02	0.02	-5.31	-3.26

TARGETS

Name	TVD [ft]	North [ft]	East [ft]	Grid East [US ft]	Grid North [US ft]	Latitude	Longitude	Shape
SEC.29-T06N-R64W	0.00	22.59	-0.15	3258845.94	1413740.23	40.4653913	-104.5696913	polygon
2D Polygon: dimensions not calculated								
SEC.32-T06N-R64W	0.00	22.59	-0.15	3258845.94	1413740.23	40.4653913	-104.5696913	polygon
2D Polygon: dimensions not calculated								
RAMPART A32-739 BHL REV-1 (460'FSL & 1909'FEL,SEC.32)	6795.00	-10491.87	-413.68	3258432.43	1403226.17	40.4365439	-104.5715730	point
RAMPART A32-739 TPZ REV-1 (460'FNL & 1999'FEL,SEC.29)	6824.00	-869.46	-580.73	3258265.38	1412848.21	40.4629596	-104.5718113	point

WELLPATH COMPOSITION - Ref Wellbore: RAMPART A32-739 AWB Ref Wellpath: RAMPART A32-739 AWP

Start MD [ft]	End MD [ft]	Positional Uncertainty Model	Log Name/Comment	Wellbore	Survey Date
---------------	-------------	------------------------------	------------------	----------	-------------

WELLPATH COMPOSITION - Ref Wellbore: RAMPART A32-739 AWB Ref Wellpath: RAMPART A32-739 AWP					
Start MD [ft]	End MD [ft]	Positional Uncertainty Model	Log Name/Comment	Wellbore	Survey Date
0.00	1921.00	Gyrodata 2015 - GC+DROP+COND	Gyrodata 2015 - GC+DROP+COND 13-1/2" <80 - 1921>	RAMPART A32-739 AWB	9/7/2021
1921.00	16912.00	OWSG MWD rev2 (MS+IFR1)	OWSG MWD rev2 (MS+IFR1) 8-1/2" <1989 - 16888>	RAMPART A32-739 AWB	9/8/2021



Actual Wellpath Report

RAMPART A32-739 AWP

Page 8 of 8



REFERENCE WELLPATH IDENTIFICATION

Operator	NOBLE ENERGY, INC	Well	RAMPART A32-739
Field	WELD COUNTY (NOBLE NAD 83 GRID)	API	0512350930
Facility	SEC.20-T06N-R64W	Wellbore	RAMPART A32-739 AWB
Slot	SLOT#11 RAMPART A32-739 (403'FSL & 1414'FEL,SEC.20)		

WELLPATH COMMENTS

MD [ft]	Inclination [°]	Azimuth [°]	TVD [ft]	Comment
80.00	0.290	135.980	80.00	FIRST GYRODATA SURVEY
1921.00	0.750	318.490	1920.97	LAST GYRODATA SURVEY
1989.00	1.140	359.310	1988.96	FIRST BH MWD SURVEY
16888.00	90.220	174.200	6798.67	LAST BH MWD SURVEY
16912.00	90.220	174.200	6798.58	PROJECTION TO BIT