

Driving Directions:

From the Town of Raymer, Beginning at the intersection of State Hwy 14 & WCR 129;

Then North on WCR 129 becoming WCR 127.5 and becoming WCR 127 for 12.9 miles;

Then turn West (Left) on WCR 110 for 4.0 miles;

BEGIN HAUL ROUTE

Continue West on WCR 110 crossing a drainage area at 0.85 miles continuing for 1.15 miles;

Then turn North (Right) on WCR 115 for 0.7 miles to the Verdad Access Road on the right (approximately 1000 foot west of the curve of WCR 110.5);

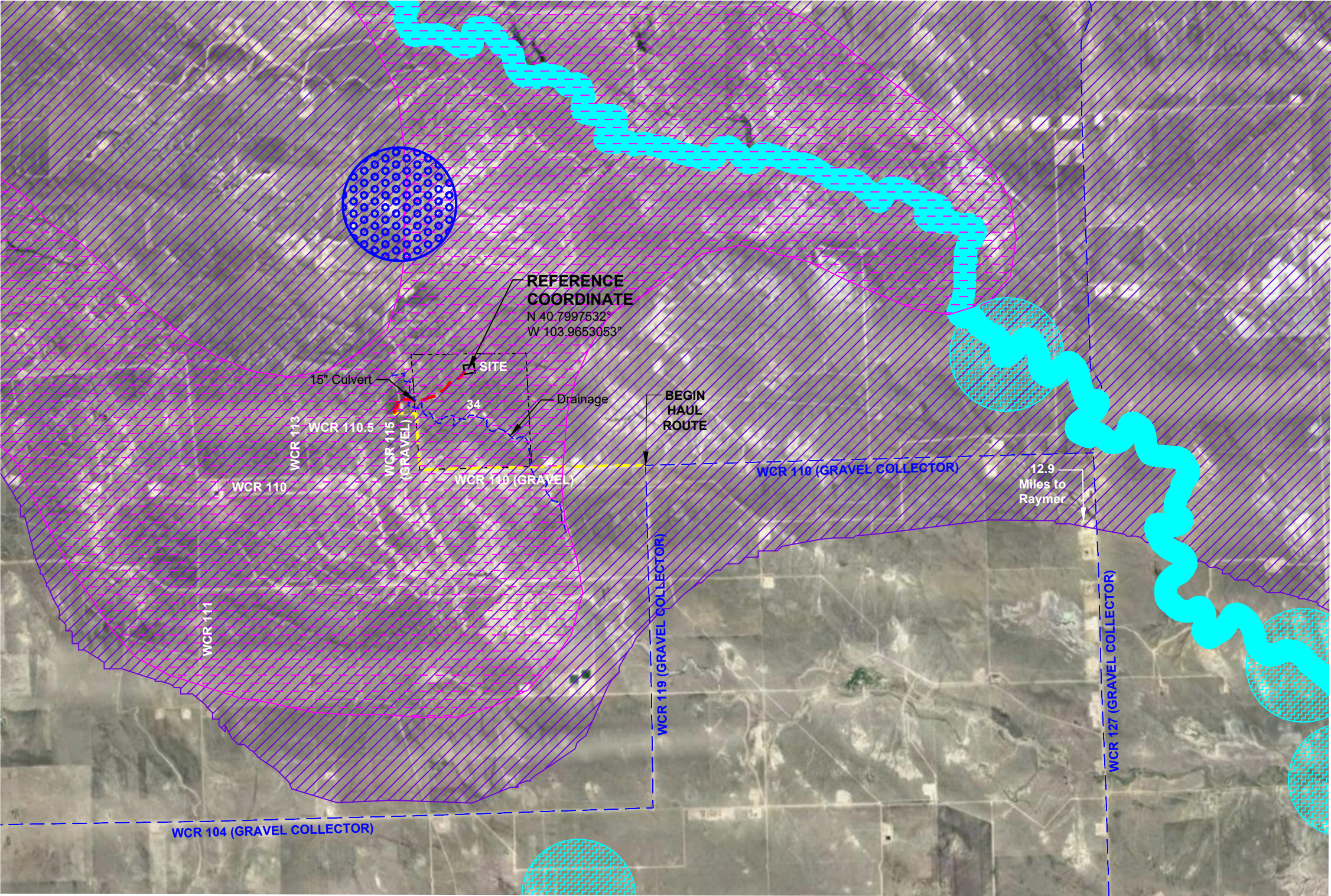
Then turn Right along on the Verdad Access Road crossing a drainage area at 785 feet from WCR 110.5 continuing 0.67 miles to the Site.

Notes:

- 1.The depicted Haul Route does not pass any towns, School Facilities, Future School Facilities, nor Child Care Centers.
- 2.There are no Residential Building Units within 2,000 feet of the access road for this Oil and Gas Location.
- 3.High Priority Habitat Information shown on this page is COGCC data only (last accessed June 22,2021).

LEGEND

- Proposed Private Access Road
- Traveled County Road
- Weld County Collector
- Mule Deer Severe Winter Range
- Mule Deer Winter Concentration Area
- Ferruginous Hawk Active Nest Site
- Golden Eagle Active Nest Site
- Aquatic Native Species Conservation Waters



VERDAD RESOURCES PEANUT FED 3403	FIELD	10/29/2020	DRAFT	SW
	REV 6	08/27/2021	CHECK	ZAK
	SHEET :	1 OF 1	JOB:	134783

Proposed Private Access Road: 4318±



ACCESS ROAD MAP
TO THE N1/2 SECTION 34
T10N R59W 6TH PM
WELD COUNTY, COLORADO