



Peanut Fed 3403

304.c.(8): Emergency Response Plan

- This plan is being submitted as a substantially equivalent document
- This plan is part of the 1041 WOGLA application
- This plan conforms to 304c.(8) and 602.j in that it provides for the effective management of situations that may arise on a location and it coordinated with and approved through emergency response agencies
- This is the plan submitted to Weld County who assigns the location an address and coordinates with the emergency response agencies. The plan contains a tactical response plan, spill management and emergency response.

SITE SAFETY AND EMERGENCY ACTION PLAN

Verdad Resources



**1125 17th st Suite 550
Denver, CO 80202**

Peanut Fed 3403 NENW & NWNE Sec 34 T10N R59W

Address: 56807 CR 110.5

WELD COUNTY, COLORADO

Proposed Spud Date: 4th Quarter 2021

Table of Contents

Section 1 – Signature Page

Section 2 – Site specific information

- a.** Site Safety Requirements
- b.** Emergency muster/assembly point(s)
- c.** 911 Address and GPS coordinates
- d.** Site description
- e.** Nearby schools and other High Occupancy Buildings
- f.** Directions to project locations
- g.** Location of SDS sheets
- h.** Location of sign-in sheets, JSA, safety forms

Section 3 – Maps & Documents

- a)** Site Map
 - i. 250', 500', 1,000' Buffer zones and location of nearest Building Unit(s)
 - ii. Access Map and Muster point(s)
 - iii. 2500' Buffer zone

Section 4 – List of Emergency Contacts

- a)** Energy Company contact information
- a)** Energy Company community/media relations contact information
- b)** First responder contact information
- c)** Regulatory contact information
- d)** Nearest hospital
- e)** Spill response organization contact information

Section 5 – Spill Response and Reporting

- a)** Spill Response
- b)** Spill Reporting

Section 6 – Reportable storage quantity's

- a)** Reportable quantities
- b)** Tier II Reporting

Section 7 – Evacuation Information

- a)** Evacuation plan procedures (public)

Section 8 – Coordination with First Responder Agencies

SECTION 1
SITE SPECIFIC INFORMATION

Verdad Resources			
Name	Signature	Title	Date
Allison Schieber	<i>Allison Schieber</i>	Sr. Regulatory Analyst	03/15/2021
Fire District			
Name	Signature	Title	Date
SE Weld Fire Department	<i>Art W. Dehan</i>	Chief	6-4-2021

Weld County Office of Emergency Management
Digitally Signed



SECTION 2

SITE SPECIFIC INFORMATION

a) Site Safety Requirements and General Information

The minimum personal protective equipment (PPE) to enter any Verdad Resources production location includes hard hat, safety glasses, safety toe boots, fire resistant clothing (FRC), and a 4-gas monitor. All contractors and visitors are responsible for providing their employees with the appropriate training on and use of PPE while on Verdad Resources locations. In addition, all contract personnel entering an Verdad Resources location to perform work must understand and abide by Verdad Resource's contractor expectations relating to environmental, health, and safety requirements.

The primary hazards that any person must be aware of while on an Verdad Resources production location include, but are not limited to, the potential for release of hydrocarbon gases and/or liquids from production equipment/tanks, heavy truck and equipment traffic, loud noise, high pressures, and the potential for a flash fire. These hazards can vary depending on the work being performed.

b) Emergency Muster/Assembly point(s)

Peanut Fed 3403 NENW & NWNE Sec 34 T10N R59W

c) 911 Address and GPS coordinates

API# – Pending COGCC Permit Approval

Legal Description – Peanut Fed 3403 NENW & NWNE Sec 34 T10N R59W

Address - 56807 CR 110.5

d) Directions: Head North on WCR 129 which becomes WCR 127.5 and then becomes WCR 127 for 12.9 Miles from the town of Raymer. Turn West on WCR 110 for 2 miles. Turn North on WCR 115 for .5 miles. Turn East onto the Peanut Fed 3403 Access route for .64 miles ending at the site location.

Town, CO Zip – Grover, CO 80729

Lat/Long: Lat: 40.7997532°N Long: -103.9653053°W

e) Site description

The Peanut Fed 3403 NENW & NWNE Sec 34 T10N R59W Pad is an Verdad Resources oil and gas production facility that will have five (5) horizontal oil and gas wells along with six (6) 400-barrel crude oil storage tanks and four (4) 400 barrel produced water tanks located inside a lined secondary containment structure.

e) **Nearby schools and other High Occupancy Buildings**

None within 2500' of location.

f) **Directions to Project Locations**

Peanut Fed 3403 NENW & NWNE Sec 34 T10N R59W.

Head North on WCR 129 which becomes WCR 127.5 and then becomes WCR 127 for 12.9 Miles from the town of Raymer. Turn West on WCR 110 for 2 miles. Turn North on WCR 115 for .5 miles. Turn East onto the Peanut Fed 3403 Access route for .64 miles ending at the site location.

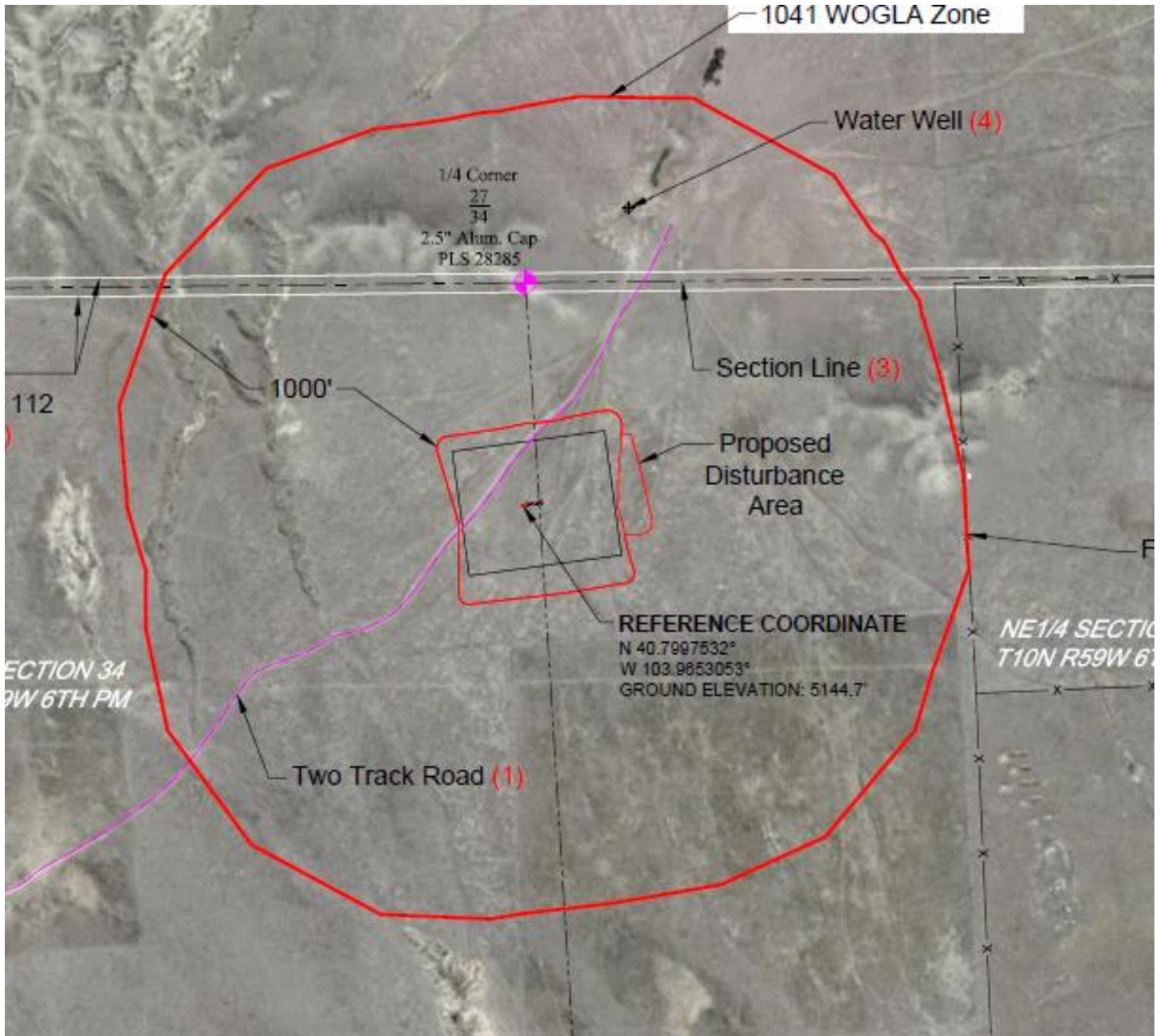
g) **Location of SDS sheets, Sign-In Sheets, JSAs, and Safety Forms**

Depending on the operations taking place on location, the chemicals that may be present will vary. Regardless, hazard communication is a critical safety measure and Safety Data Sheets (SDS's) will be available from the Company Representative present or the contractor performing work on location.

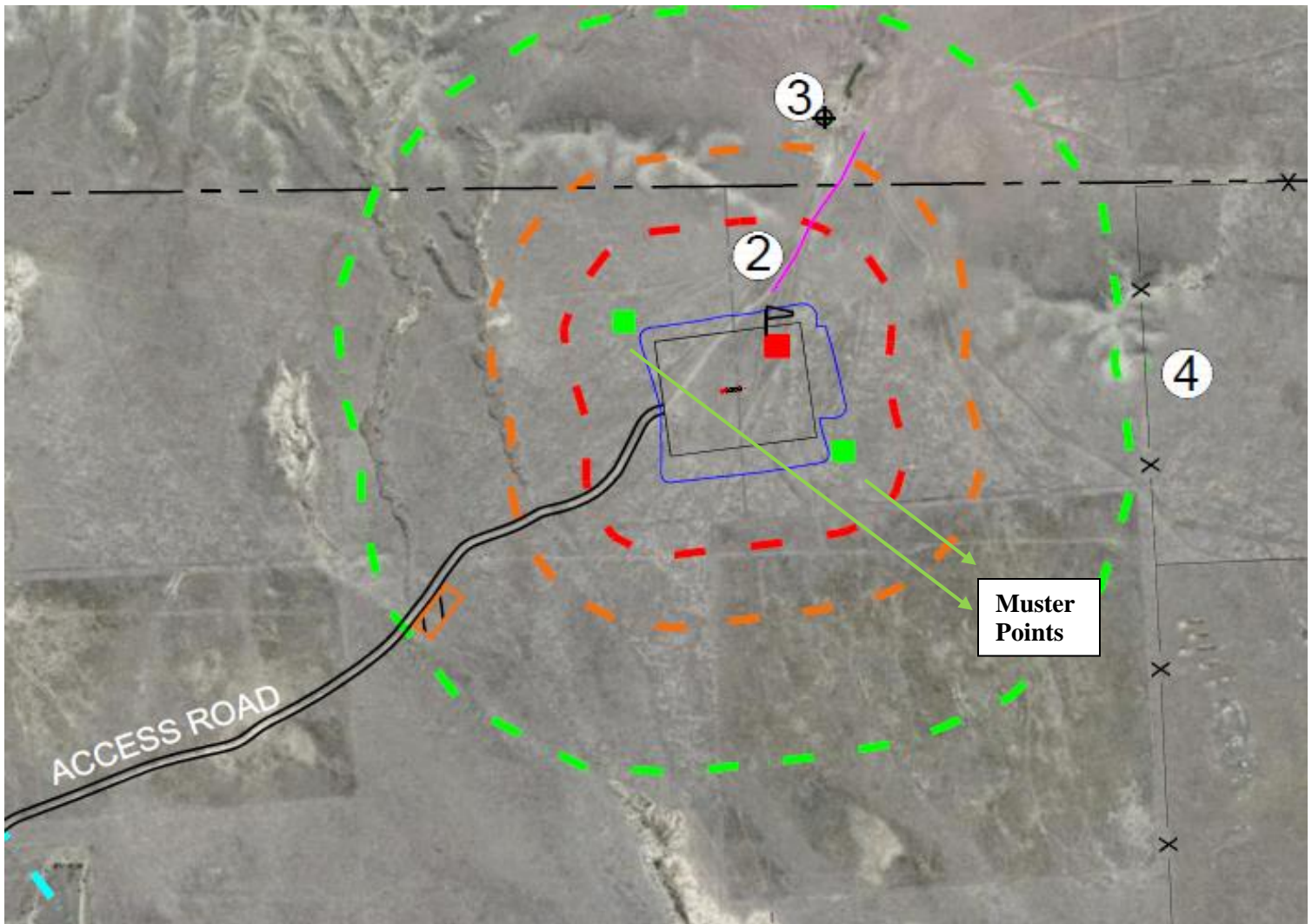
During drilling and completion activities all employees and approved visitors to the Peanut Fed 3403 NENW & NWNE Sec 34 T10N R59W will be required to enter through a manned security checkpoint at the location entrance where they will be required to sign in and will be provided with a detailed safety briefing of current operations and all safety precautions that must be adhered to while on location. In addition, all who enter the location must also sign out upon their departure. Security personnel are required to account for all persons entering or leaving location during active operations and in the event of an incident.

Once drilling and completion activities are finalized, the site will transition to its production phase and no unauthorized personnel will be allowed on location without first contacting a company representative. At this point, the primary chemicals stored on site will be crude oil and produced water.

Section 3
Project Area Map
1,000' Buffer



Project Location Access Map and Muster Point



2500 Foot Buffer Area Map



Section 4
List of Emergency Contacts

a) Energy Company

Verdad Resources	Office Phone	Emergency/Cell
1125 17 th St Suite 550 Denver CO 80202	720-845-6907	1-800-980-2927
Field Office and Address	NA	1-800-980-2927
Energy Company EHS on call emergency number	1-800-980-2927	1-800-980-2927
EHS Supervisor Randy Jackel	720-845-6912	970-381-7155
EHS – Safety Justin Pivik	720-845-6915	303-653-6457
EHS – Environmental Mike Cugnetti	720-845-6901	303-704-8856

b) Energy Company community/media relations

Name	Office	Cell Phone
Allison Schieber	720-845-6909	
Heather Mitchell	720-845-6917	

c) First Responders

Name	Emergency	Office Number
Pawnee Fire	911	970-895-2237
Weld County Sheriff	911	970-356-4015
Colorado State Highway Patrol	911	970-506-4999

d) Regulator Contacts

Name	Office Phone	Cell Phone
COGCC	303-894-2100	none
CDPHE	877-518-5608	none
Colorado Parks & Wildlife	303-291-7227	none
National Response Center	800-424-8802	

e) Medical Facilities

Name	Office Phone	Cell Phone
Northern Colorado Medical Center	970-352-4121	none
Medical Center of the Rockies	970-624-2500	none

f) Spill Response Organization

Name	Office Phone	Cell Phone
Quandary Consultants	720-598-8660	

g) Fire, explosion, associated with loss of well control

Name	Office Phone
Pawnee Fire	970-895-2237
Wild Well Control, Inc.	281-353-5481
Northern Colorado Medical Facility (Burn Unit)	970-810-4121
Weld County Office of Emergency Management (Roy Rudisill)	970-304-6540

h) Government Agencies

Name	Office Phone
Weld County Sheriff's Office	911 or 970-356-4015
COGCC	303-894-2100
CDPHE	877-518-5608
Weld County (Jason Maxey, LGD)	970-400-3579

i) Railroad Emergency Response

Name	Office Phone
Union Pacific Railroad	888-877-7267

Section 5

Spill Response and Clean Up

a) Spill Response

There are multiple types of hydrocarbons which can be released/spilled during oil and gas production and exploration. Most commonly released are unrefined products such as crude oil and produced water. Refined petroleum products such as diesel, gasoline, and motor oil spills are less common, but still equally important to mitigate. If a spill is found reportable, it will be mitigated in accordance with Colorado Oil and Gas Conservation Commission (COGCC) and Colorado Department of Public Health and Environment (CDPHE) guidelines.

Once a release has been identified, it will be immediately stopped and contained if possible and is safe to do so. When containing a spill; pig blankets, snakes, absorbent materials, or earthen berms will be constructed around the release to keep material from spreading. These materials will be provided by Verdad Resources and the contract company and kept on-site. Diligent efforts will be made to minimize contact with live vegetation or open water if release is outside of secondary containment structures.

In the event of a large incident requiring outside assistance, Verdad Resources has contracted with Quandary Consultants. Quandary Consultants possesses a working knowledge of oil and gas operations, emergency response and Incident Command. Once notified Quandary Consultants personnel can be on location within 12 hours.

b) Spill Reporting

What determines a reportable spill and to whom does the report go?

- A spill/release will be reported to the COGCC if released material is property of Verdad Resources and meets the COGCC reporting thresholds (see below), an example would be crude oil released from a separator or produced water from a water vault.
- A spill/release will be reported to the Weld County LEPC if released material is property of Verdad Resources and meets the COGCC reporting thresholds (see below),
- A spill/release will be reported to the CDPHE if released material is in the custody of a third party for spills that meet CDPHE reporting thresholds, are of any size that impact or threaten to impact waters of the state, a residence or occupied structure, livestock or public byway. An example would be an oil hauler over filling a truck and spills product onto the ground next to a flowing irrigation ditch.

There are three release volume thresholds which determine if a hydrocarbon spill is reportable. These are:

1. If crude oil or produced water is released **INSIDE** secondary containment and volume is greater than **5 barrels**.
2. If crude oil or produced water is **OUTSIDE** secondary containment and volume is greater than
3. **1 barrel**.
4. If more than **25 gallons** of petroleum product such as diesel, gasoline or motor oil is spilled
5. **OUTSIDE** of secondary containment.

Once a spill is determined reportable, there is a 24-hour deadline to make initial notification to the COGCC or CDPHE depending on product ownership. Spills/releases in the custody of Verdad Resources will be reported by a Company representative. Spills/releases in the custody of a third party will be reported by the responsible company's EHS Department to the appropriate agency and to Verdad Resources.

These regulatory guidelines will be strictly followed by Verdad Resources and any contractors operating under Verdad Resources guidance during all activities at the Peanut Fed 3403 NENW & NWNE Sec 34 T10N R59W.

Section 6

Reportable quantities

a) Reportable quantities

Mandated by Section 312 of the Emergency Planning and Community Right-To-Know Act (EPCRA) – also known as SARA Title III – the Tier II form captures information about the types, quantities, and locations of hazardous chemicals at a given facility. The form also lists contact information for the facility's designated emergency point-of-contact.

Any facility that is required to maintain MSDSs (or SDSs) under the Occupational Safety and Health Administration (OSHA) regulations for hazardous chemicals stored or used in the work place.

Facilities with chemicals in quantities that equal or exceed the lists of lists thresholds must report.

- Propane, benzene, propene and methane are on the lists of lists and are known to be in crude oil. In addition, diesel is on the lists of lists and may be stored on sites during construction.

b. Reportable requirements

If your facility will meet the requirements under 40 CFR, you must submit your Tier II report to the state every year before March 1st.

These regulatory guidelines will be strictly followed by Verdad Resources and any contractors operating under Verdad Resources guidance during all activities at the Peanut Fed 3403 NENW & NENE Sec 34 T10NR59W.

Section 7

Evacuation Information

a. Evacuation Plan Procedures (public)

The procedure to be used in alerting nearby persons in the event of any occurrence that could pose a threat to life or property will be arranged and completed with public officials in detail.

In the event of an actual emergency, the following steps will be immediately taken:

1. The Verdad Resources representative will immediately notify proper authorities, including the sheriff's office, highway patrol, and any other public officials as described above and will enlist their assistance in warning residents and transients in the calculated radius of exposure.
2. The Verdad Resources will coordinate with local authorities to warn residents' down-wind of the location and within radius of exposure from the well site. Additional evacuation zones may be necessary as the situation warrants.
3. The Verdad Resources representative will coordinate with appropriate emergency personnel to divert traffic in the vicinity away from the potentially dangerous area. No trespassing and warning signs will be posted at the entrance to the well site. The contract company will monitor essential and non-essential traffic on-site.
4. General:
 - a. The area included within the radius of exposure is considered to be the zone with the maximum potential hazard. When it is determined that conditions exist which create an additional area (beyond the initial zone of maximum potential hazard) vulnerable to possible hazard, public areas in the additional hazardous area will be evacuated.
 - b. In the event of a disaster, after the public areas have been evacuated and traffic stopped, it is expected that local civil authorities will have arrived and within a few hours will have assumed direction of and control of the public, including all public areas. Verdad Resources will cooperate with these authorities to the fullest extent and will exert every effort by careful advice to such authorities to prevent panic or rumors.
 - c. Verdad Resources will dispatch appropriate personnel to the disaster site as soon as possible. The company's personnel will cooperate with and provide such information to civil authorities as they might require.

Section 8
Coordination with First Responder Agencies

- a) Verdad Resources will communicate site construction, drill spud, completion operations and Production Turn-In-Line dates to the Weld County Office of Emergency Management for coordination/communication with local first responders. These start dates will be provided a minimum of 7 business days prior to commencement or change in oil and gas development operations.
- b) In the event of an emergency requiring First Responders, Unified Command will be established between the Verdad Resources appointed company man on location and First Responders present. Unified Command post will be established based on conditions present at time of incident.
- c) While foam is not currently supplied for oil and gas emergency response, Verdad Resources is an active member of Front Range Emergency Resource Corporative (FRERC), and a solution is being sought thorough a cooperative effort including other operators, First Responders and Weld County. It is Verdad Resources intention to have established a source of foam by the 4th quarter of 2018.
- d) Verdad Resources EHS representative and first responders identified in this Site Safety and Emergency Action Plan have reviewed this plan and discussed coordination efforts in the event of an emergency situation requiring first responder assistance.

NOTIFICATIONS

Verdad 24-Hour Hotline

800-980-2927

National Response Center:

800-424-8802

Colorado Department of Natural Resources

303-866-3311

EPA Region VIII

303-312-6312

Weld County Communications

911

Weld County OEM

970-350-9600

Colorado Oil and Gas Conservation Commission

303-894-2100

Colorado Department of Public Health and Environment

877-518-5608

Pawnee Fire Protection District

970-895-2237

RESPONSE OBJECTIVES

Ensure safety of the public, first responders, Verdad employees, and contractors. Minimize the impact to the environment and local community. Contain and recover released product to the extent possible.

CRITICAL RECEPTORS

1. Entrance
2. Two Track Road
3. Water Well
4. Fence
5. Drainage

LEGEND

- STAGING AREA
- MUSTER POINT
- PROPOSED TANK BATTERY
- PROPOSED DISTURBANCE AREA
- 250' HOT ZONE
- 500' WARM ZONE
- 1000' COLD ZONE
- 2500' ERG ZONE
- EXISTING PIPELINE
- SECTION LINE
- FENCE LINE
- WATER WELLS
- PROPOSED WELLS
- EXISTING WELLS
- WINDSOCK

PEANUT FED 3403 PAD TACTICAL RESPONSE PLAN

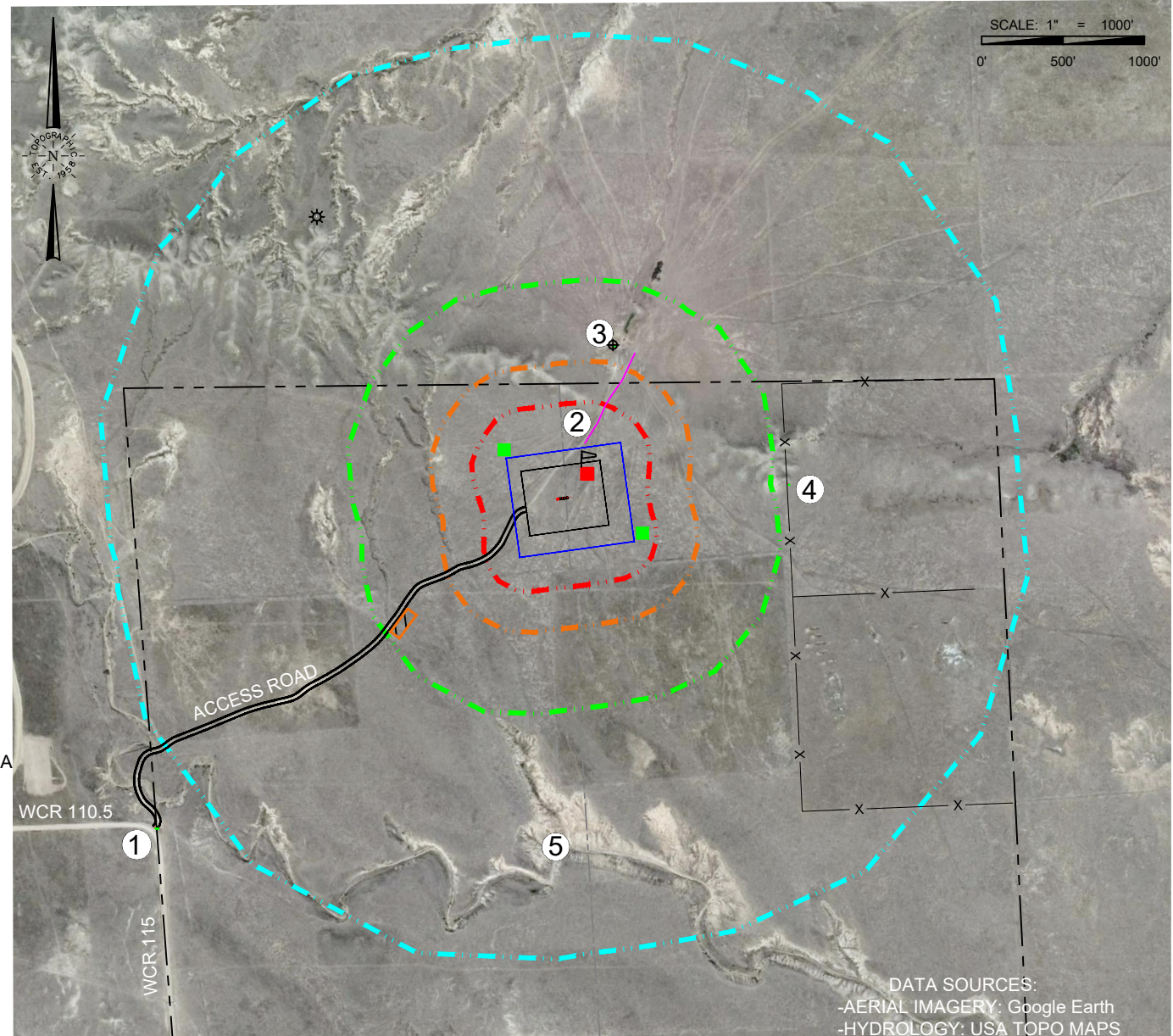
NW1/4 & NE1/4 SECTION 34

T-10-N R-59-W 6TH PM

WELD COUNTY, COLORADO

SITE LOCATION: N 40.7997532°, W 103.9653053 °

Address: 56807 CR 110.5



DATA SOURCES:
-AERIAL IMAGERY: Google Earth
-HYDROLOGY: USA TOPO MAPS

VERDAD RESOURCES

PEANUT FED 3403

FIELD 05/18/2020 DRAFT PAV

REV 3 04/15/2021 CHECK ZAK

SHEET : 1 OF 1 JOB: 134783

NOTE: This Tactical Response Plan is a reference tool and is intended to provide guidance during an actual event or exercise. Placement of resources may need to be adjusted according to environmental variables. It is the responsibility of emergency response personnel to be trained in response and to be able to make adjustments to the report as needed. Publicly available data sources have not been independently verified by Topographic Land Surveyors.



FIRE DEPARTMENT RESPONSE GUIDELINES	INDUSTRY RESPONDS OBJECTIVES	FACILITY INFORMATION
<p data-bbox="283 121 430 147">COMMAND</p> <ul data-bbox="52 159 661 602" style="list-style-type: none">• Establish initial command post near the oil & gas location entrance.• Position should provide a clear view of the entire scene• Advise responding units and resources to stage near location entrance.• Locate operator lease sign on location (located at the entrance /site access)• If industry personnel are not on location, call the 24-Hour Emergency Contact number located on the sign.• Establish unified command with operator on-site liaison• Develop incident action plan with the operator to mitigate incident• Strategy - <u>Always defensive unless a life safety need is identified!</u> <p data-bbox="199 641 514 667">INCIDENT STABILIZATION</p> <ul data-bbox="52 678 661 1122" style="list-style-type: none">• Implement Hazardous Materials response protocols• All personnel operating in hazard zones should be in appropriate PPE, to include a personal mobile air monitoring device• Establish Hot, Warm, Cold Zones, and ERG zones• Exposure Concerns --- Equipment, nearby structures, neighborhoods, roadways, etc.• Monitor weather conditions, especially wind direction• Air monitoring for vulnerable areas and locations around incident.• Conduct evacuations of citizens, bystanders, and resources at risk• Identify and address any water supply and/or foam requirements necessary to mitigate the incident <p data-bbox="193 1161 520 1187">SPECIAL CONSIDERATIONS</p> <ul data-bbox="52 1219 661 1344" style="list-style-type: none">• Consider and address any potential impacts to critical receptors identified near the location• Consider requiring a fire investigation for any fire and/or explosion	<p data-bbox="684 110 1293 219">Ensure safety of the public, first responders, employees, and contractors. Minimize impact to the environment and local community. The following response objectives checklist shall be followed:</p> <p data-bbox="877 261 1104 287">SAFETY – PROTECT LIFE</p> <ul data-bbox="684 310 1293 557" style="list-style-type: none">• Evaluate and account for all personnel• Isolate all potential ignition sources• Establish site control (safe perimeter and evacuation routes)• Contact emergency services as needed (911, Fire, LEPC)• Identify hazard(s) of emitted material (obtain SDS)• Monitor air around impacted area• Continually assess site hazards/risks <p data-bbox="802 592 1180 618">RESPONSE – INCIDENT STABILIZATION</p> <ul data-bbox="684 641 1293 1019" style="list-style-type: none">• Notify internal personnel and agencies• Establish command post and field communications• Identify and establish staging areas to support response operations• Activate response tactics to control fluids• Activate response company for equipment and manpower as needed• Implement waste handling, disposal and decontamination procedures as needed• Assign on-site liaison to the incident commander• Establish Air Traffic restriction if required <p data-bbox="745 1052 1239 1078">ENVIRONMENTAL – PROTECT THE ENVIRONMENT</p> <ul data-bbox="684 1101 1155 1240" style="list-style-type: none">• Identify, prioritize, and protect sensitive areas• Implement recovery efforts of fluids• Verify if water has been impacted• Notify appropriate agencies	<p data-bbox="1318 105 1619 131">Well Pad Liquid Storage:</p> <ul data-bbox="1318 164 1701 277" style="list-style-type: none">• Oil (BBL) – 400 BBL• Water (BBL) – 400 BBL• *1 Barrel (BBL) = 42 Gallons <p data-bbox="1318 310 1787 407">Specific Facility Hazardous Conditions: C= Construction D=Drilling, F=Facility, P= Production, O= Operations</p> <p data-bbox="1318 415 1551 441">Substance Hazards</p> <ul data-bbox="1318 453 1911 664" style="list-style-type: none">• Hydrocarbons under pressure – D,F,P• Toxic Substances – D,F,P• Liquids and gases under high pressure – D,F,P• Hot or cryogenic fluids – D,F,P• Blasting agents, explosive substances – F• H2S – P <p data-bbox="1318 672 1560 698">Equipment Hazards</p> <ul data-bbox="1318 709 1753 813" style="list-style-type: none">• Dangerous equipment – C, D,F,P• Ignition sources – D,F,P• Lifting facilities/heights – C, D,F <p data-bbox="1318 821 1524 847">General Hazards</p> <ul data-bbox="1318 859 1684 1037" style="list-style-type: none">• Transportation – C,D,F,O• Weather – C,D,F,P• Wildlife – C,D,F,O• Radiation – N/A• General Safety – C,D,F,O,P <p data-bbox="1318 1078 1793 1143">Is Water Supply Available on Location? No Water Supply on Location</p> <p data-bbox="1318 1183 1629 1209">Nearest Foam Resources:</p> <ol data-bbox="1318 1221 1549 1308" style="list-style-type: none">1. Briggsdale Fire2. Galeton Fire3. Greeley Fire